

# INCIDENT ACTION PLAN

## WEST MIMS FIRE

### OPERATIONAL PERIOD

#### JUNE 10, 2017

#### 0730-1930

## SOUTHERN STATES TYPE-1 IMT

QR for IAP



GA-OKR-017006

FWS FFF2000000KYJ70

USFS PRKYJ717\_1502 (P)

NPS PFFSKJ7017.00.1

QR for Maps



#### Schedule

0730 Pre-Op Briefing  
0800 Morning Briefing  
1100 C & G  
1600 Pre Planning Meeting  
1700 Planning Meeting



## INCIDENT OBJECTIVES (ICS 202)

<b>1. Incident Name:</b>	<b>2. Operational Period: DAY SHIFT 0730-1930</b>	
WEST MIMS	Date/Time From: 06/10/2017 0730 SAT	Date/Time To: 06/10/2017 1930 SAT
<b>3. Objective(s):</b>		
<ul style="list-style-type: none"> <li>• Provide for the safety and security of incident personnel and public in all incident operations through sound risk assessment and hazard mitigations.</li> <li>• Confine all new fires (new starts or breakouts) within the Okefenokee National Wildlife Refuge and/or inside the swamp edge break. Fight fire aggressively and suppress all fire outside the swamp edge boundary, preventing fires from outside the break from entering the refuge while minimizing damage to private timberlands and improvements.</li> <li>• Maintain a positive working relationship with all adjacent landowners, cooperators and State and Federal partners. Inform, involve and communicate incident planning and operations with all including the Refuge Resource Advisors.</li> <li>• Protect all cultural and archeological sites and structures within the refuge.</li> <li>• Manage the fires cost-effectively, consistent with the values at risk.</li> <li>• Implement structure protection as necessary for at-risk facilities and communities.</li> <li>• Conduct all operations in a harassment-free environment.</li> <li>• Identify and initiate suppression repair on all Divisions.</li> <li>• Provide for a smooth and orderly transfer of command to the Type 3 IMT.</li> </ul>		
<b>4. Operational Period Command Emphasis:</b>		
Branch IV Keep fire East of the North Prong of St Mary's River; West of Nassau county Florida; and North of Baker county Florida Branch III Keep fire North of Rayonier Road 10, West of St Mary's River, and South of Stokes Road Keep fire within the Okefenokee Refuge Swamp Edge Break Boundary. Respond to initial attack fires on new starts within: *South of Suwannee Canal *Within the Okefenokee jurisdictional boundaries *Within state properties inside Perimeter Road		
<b>General Situational Awareness:</b>		
Utilize confine, contain, and point source protection strategies and tactics that commit operations personnel only where and when they can be successful, under conditions where important values at risk are protected with the least exposure.		
<b>5. Site Safety Plan Required?</b> Yes <input type="checkbox"/> No <input checked="" type="checkbox"/>		
<b>Approved Site Safety Plan(s) Located at:</b>		
<b>6. Incident Action Plan</b> (the items checked below are included in this Incident Action Plan):		
<input checked="" type="checkbox"/> ICS 202 <input type="checkbox"/> ICS 207 <input checked="" type="checkbox"/> ICS 203 <input type="checkbox"/> ICS 208 <input checked="" type="checkbox"/> ICS 204 <input checked="" type="checkbox"/> ICS 220 <input checked="" type="checkbox"/> ICS 205 <input checked="" type="checkbox"/> Map/Chart <input type="checkbox"/> ICS 205A <input checked="" type="checkbox"/> Weather Forecast/Tides/Currents <input checked="" type="checkbox"/> ICS 206	Other Attachments: <input type="checkbox"/> _____ <input checked="" type="checkbox"/> TENTATIVE DEMOB <input checked="" type="checkbox"/> SAFETY MESSAGE <input checked="" type="checkbox"/> RESTAURANT LIST	
<b>7. Prepared by:</b> SHAUN STEWART                      Position/Title:    PSC2 (T)	Signature:	
<b>8. Approved by Incident Commander:</b>	Name:    KEITH MOUSEL	Signature:
<b>ICS 202</b>	<b>IAP Page</b>	Date/Time:    06/09/2017 1900

## ORGANIZATION ASSIGNMENT LIST (ICS 203)

<b>1. Incident Name:</b>		<b>2. Operational Period:</b> DAY SHIFT 0730-1930	
WEST MIMS		Date/Time From: 06/10/2017 0730	Date/Time To: 06/10/2017 1930
		SAT	SAT
<b>3. Incident Commander(s) and Command Staff:</b>			
IC/UC	SAM LENEAVE; KEITH MOUSEL (T); MIKE QUESINBERRY	INCIDENT METEOROLOGIST	TERRY LEBO THOMAS WRIGHT (T)
SAFETY OFFICER	LARRY GRUBBS; LARRY CONNELL	FIRE BEHAVIOR ANALYST	BART HOAG
INFORMATION OFFICER	ANNALEASA WINTER TODD SCHROEDER MELANIE BANTON (T)	RESOURCE ADVISOR	JOHN DUNLAP MIKE CRAWFORD
LIAISON OFFICER	DANIEL STANLEY	ARCHAEOLOGIST	DWIGHT KIRKLAND GERALD BRINKLEY
<b>4. Agency/Organization Representative(s):</b>			
<b>Agency/Organization</b>	<b>Name</b>		
GFC PROTECTION	FRANK SORRELLS		
OKE REF MGR/ASSIST	MICHAEL LUSK; SARA CLARDY		
OKE REF FMO	REESE KERBOW		
GOAL	JIM BARRETT		
FL FFS	JOHN RAULERSON		
GEMA	KRISTEN HIGGS; DIANE ADAMS		
CLINCH CO EMA	WILL JOYCE; RANDY PATTEN		
CHARLTON CO EMA	BRUCE YOUNG		
WARE CO EMA	JONATHAN DANIELL		
BAKER CO SO	BECK PARKER		
COLUMBIA COUNTY	SHAYNE MORGAN		
OSCEOLA NF	IVAN GREEN		
<b>5. Planning Section:</b>			
CHIEF	DUANE DURGEE; BOO WALKER (T) JOE BISHOP (T)		
RESOURCES UNIT	SHAUN STEWART FRED NOACK; PAT DEREN		
DEMOBILIZATION UNIT	BOBBY CAHAL		
STATUS CHECKIN	JOSEPH ROBLES		
DOCUMENTATION UNIT	TERI PARVIN		
SITUATION UNIT	SCOTT CROSBY		
GIS SPECIALIST	JORDAN SMITH STEVE PENNY		
ITSS	DEAN GROE; RANDALL FOUNTAIN TIM STILTNER (T)		
TRAINING SPECIALIST	DAVID HUNT		
HUMAN RESOURCE SPECIALIST			
<b>6. Logistics Section:</b>			
CHIEF	EAST - JIM PETERS WEST-DAVID MCVAY (T)		
FACILITIES UNIT	EAST-STEPHEN TANNER		
GROUND SUPPORT UNIT	WEST-GLENN SIMMONS DOUGLAS CROCKER		
SUPPLY UNIT	WEST- JAMIE COPPLE		
RCDM	PHILIP BRENTON		
ORDM	MARK MCCLELLAN		
MEDICAL UNIT	WEST-TRAVIS MCGOWEN		
FOOD UNIT	STEPHEN MARSHALL		
SECURITY UNIT	DAVID MOODY		
COMMUNICATIONS UNIT	CHUCK RADCLIFF PAUL NOA (T)		
BCMG	CHAD PRITCHETT		
<b>7. Operations Section:</b>			
<b>9. Prepared By:</b> Name: FRED NOACK      Position/Title: RESL      Signature:			
ICS 203	IAP Page	Date/Time: 06/09/2017 1800	





**To: All Incident Personnel, West Mims Fire 2017**

As the Unified Command Incident Commanders, we have a policy of “zero tolerance” of inappropriate behavior during incident operations. Any form of harassment, discriminatory practices, or disrespectful behavior will not be tolerated. Known or reported acts will be dealt with appropriately.

We are particularly concerned about the perception that alcohol has a place in any of the Incident facilities. It is not appropriate to indulge in alcoholic beverages during any fire assignment.

The National Team from the Southern Region has a policy of “NO ALCOHOL” from the time of dispatch until the time of physical release from the Incident. Members of the Team voluntarily comply with this policy; all incident personnel will be expected to do so also.

We endorse, support, and expect an attitude of mutual respect for all Incident personnel and the public we serve. We also, endorse the attitude and work ethic that places “Safety First, every time on every Incident.” We expect nothing less.

<p>/s/ Keith Mousel /s/ Mike Quesinberry Incident Commanders</p>
--



# Fire Weather Forecast



**FORECAST NO: 64**  
**PREDICTION FOR: Saturday**  
**SHIFT DATE: June 10, 2017**  
**FORECAST ISSUED: 1700 June 9, 2017**

**NAME OF FIRE: West Mims Fire**  
**UNIT: Okefenokee National Wildlife Refuge**  
**Incident Meteorologist: Terry Lebo - 240-499-6640**  
**Incident Meteorologist (T): Tom Wright - 240-778-5304**

## **DISCUSSION:**

Mostly sunny and dry weather continues over the fire on Saturday as high pressure remains over the area. Expect light east-southeast winds to develop after noon. There will also be a slight chance of a thunderstorm as heat and humidity start to increase. Any thunderstorms may produce gusty winds and up to a quarter inch of rain.

## **SATURDAY:**

- WEATHER: Mostly sunny. Slight chance of a thunderstorm in the afternoon.
- WIND (20 FT): Light and variable in the morning, becoming southeast 5-10 mph after noon.
- MAX TEMPERATURES: 94-97    MAX HEAT INDEX: 100-105    MIN RH: 45-50%
- LAL: 2    CHANCE RAIN: 20% (pm)    DISPERSION (MAX): 60
- MIXING HEIGHT: 5000    RAINFALL: <0.25"    TRANSPORT WINDS: SE 10-15 mph

## **SATURDAY NIGHT:**

- WEATHER: Mostly clear. Areas of fog.
- WIND (20 FT): Light and variable.
- MIN TEMPERATURES: 64-68    MAX RH: 100%    MAX LVORI: 10
- LAL: 1    CHANCE OF RAIN: 0%    RAINFALL: 0.00"

## **SUNDAY:**

- WEATHER: Partly sunny. Chance of a thunderstorm in the afternoon.
- WIND (20 FT): Light and variable in the morning, becoming southeast 5-10 mph after noon.
- MAX TEMPERATURES: 94-97    MAX HEAT INDEX: 100-105    MIN RH: 50-55%
- LAL: 3    CHANCE RAIN: 30% (pm)    DISPERSION (MAX): 40
- MIXING HEIGHT: 5000    RAINFALL: 0.25-0.50"    TRANSPORT WINDS: E 15-20 mph

**Sunrise Thursday: 6:27 am    Sunset Thursday: 8:32 pm    Sunrise Friday: 6:27 am**

**Thunderstorms imply gusty and erratic winds, locally heavy rain, and lightning**

## **RAWS Observations:**

Jones Island



Eddy Tower



OKE East



OKE NW



Gator



Low Tower



Indian Mound



**FIRE BEHAVIOR FORECAST**

<b>FORECAST NUMBER:</b> #54	<b>TYPE OF FIRE:</b> Wildland
<b>FIRE NAME:</b> West Mims	<b>OPERATIONAL PERIOD:</b> 06/10/2017 Day Operational Period
<b>DATE ISSUED:</b> 06/09/2017	<b>TIME ISSUED:</b> 1700
<b>UNIT:</b> Okefenokee National Wildlife Refuge	<b>Signed:</b> Bart Hoag FBAN

**FUEL ASSUMPTIONS:** Fuel types include timber litter and grass/brush/timber types. The high risk fuel type is grass/palmetto/gallberry brush understory, particularly in the early/mid rotation pine plantations. Fuels are slowly drying with the current weather after the recent rains. Current fuel conditions are not favorable for active fire behavior. Active crown fire in brush and pine canopy is not expected over the next two operational periods.

**KBDI:** 173 (up 45 from yesterday) , **ERC-G:** 14

Fuel Moistures: 1hr= 12%, 10hr= 18%, 100 hr= 30%

Measured Live Woody Fuels Moisture (Gallberry): 116%, Live Herbaceous Fuel Moisture(Blue Stem): 129%

**WEATHER SUMMARY:** Mostly sunny. Slight chance of a thunderstorm in the afternoon.  
 WIND (20 FT): Light & variable in the morning, becoming southeast 5-10 mph in the afternoon.  
 MAX TEMPERATURES: 94-97                      MIN RH: 45-50%  
 LAL: 2    CHANCE OF RAIN: 20%              MAX DISPERSION: 60  
 MIXING HEIGHT: 5000                              TRANSPORT WINDS: Southeast 10-15 mph

**LARGE FIRE GROWTH FIRE ENVIRONMENT CONDITIONS PRESENT DURING FIRE RUN THAT THREATENED ST GEORGE ON MAY 5<sup>th</sup>, 2017.**

Fuel dryness and fire weather combined to produce significant fire growth of 18,000 acres with an initial run that was 9 miles in length. Growth initiated in swamp brush fuels east of Soldier Camp Island and burned out of the refuge into pine plantation fuels.

Fuel Moistures: 1hr FM= 5% 10 hr. FM= 7% 100 hr. FM= 14% Live Woody= 101% Herbaceous= 119%

Indicies: KBDI=720 (97<sup>th</sup> percentile) ERC G=37 (85<sup>th</sup> percentile) BI G=49 (97<sup>th</sup> percentile)

Weather Conditions: Max Temp=77 Min RH=27% Winds= 12 sustained with gusts to 20

Fire Behavior: ROS= >80 ch/hr. (1mile) Active crown fire Max spotting distance=1 mile

**SPECIFIC: All Branches:** The current fire weather forecast is not favorable for active fire behavior, and no significant fire spread events are expected during the current operational period. Surface fuels are recovering from the recent rains. Several days of continued warm, dry weather will be required before fuels are available to burn. In highly protected areas a few slash piles will continue to smolder.

Fuel Type	Rates of Spread	Flame Length	Max Spot Distance	Probability of Ignition	Torching / Crowning Potential / Flame Lengths
Southern Rough(pine w/palmetto/gallberry)	2 to 4 ch/hr.	1 to 3 foot	20 feet	5%	No Torching
Timber Litter (pine litter reburn)	.5 to 1 ch/hr.	0.5 feet	0 feet	5%	No Torching
Grass/Shrub (Young Plantations/Swamp GS3)	4 to 6 ch/hr.	2 to 5 foot	0 feet	5%	No Torching

**AIR OPERATIONS:** No expected impacts to aviation operations due to fire behavior, smoke or weather.

**FIRE BEHAVIOR SAFETY:**

Difficult walking conditions in burned areas due to excessive soil moisture levels causing slippery footing conditions. Use equipment to probe slash piles for heat, do not walk on top of piles, high potential for breaking through into extremely hot conditions.

Reference: 1 chain = 66 feet, 20 chains = .25 mile, 40 chains = .50 mile, 60 chains = .75 mile, 80 chains = 1 Mile

# IA Protocol

- Determine LAT/LONG.
- Notify OSC and/or OPBD.
- OSC/OPBD will notify Unified IC's for approval to assist with ground or aviation resources.

## In Georgia:

Southern Response Dispatch (229) 386-3846

**If no contact**-Buck Kline (912) 678-2694

## In Florida-

Lake City (Baker, Columbia, and Hamilton Counties):  
(386) 243-6243

Jacksonville (Nassau County): (904) 266-8351

**If no contact**-Rick Dolan (352) 353-5101

Osceola National Forest- Any starts south of Florida State Highway 2 under USFS jurisdiction are the responsibility of the Osceola NF. Contact Tallahassee Dispatch at 850-523-8600 or Forest Duty Officer Drew Page at 850-523-8600. Tractor plow units should not engage (unless life or property is threatened) before contact with Osceola NF (Chris Lydick at 850-264-3209 or Scott Hussey at 352-215-5722).

## For OKR-

Brantley Boatright Dispatch (912) 496-7366 x 230  
or (912) 276-0023



## Division/Group Assignment List (ICS 204 WF)

<b>1. Incident Name:</b>			<b>3.</b>			
WEST MIMS			<b>Branch:</b>		<b>Division/Group:</b>	
<b>2. Operational Period:</b> DAY SHIFT 0730-1930			<b>I</b>		<b>B/C</b>	
Date/Time From: 06/10/2017 0730 SAT		Date/Time To: 06/10/2017 1930 SAT				
<b>4. Operations Personnel</b>						
<b>PLANNING OPERATIONS CHIEF</b>		DAVID SMITH (T)		<b>OPERATIONS CHIEF</b>		RICK DOLAN BUCK KLINE
<b>BRANCH DIRECTOR</b>				<b>DIVISION/GROUP SUPERVISOR</b>		CHRIS ROBERTS - 6/11
<b>SAFETY</b>		LARRY GRUBBS LUCAS MINTON (T)		<b>AIR TACTICAL GROUP SUPERVISOR</b>		
<b>5. Resources Assigned this Period</b>						
Strike Team / Task Force / Resource Designator		LWD	Leader	Number Persons	Drop Off PT./Time	Pick Up PT./Time
TFLD O-788		06/11	NATHAN ALLEN	1	ICP/0730	ICP/1930
ENG6 - NC-NCF E-691 E-255		06/11	HARVEY HOWARD JR	3	ICP/0730	ICP/1930
ENG6 - GFC4201757 E-1018		06/11	ROCK HOLT	2	ICP/0730	ICP/1930
GRD CORNELIUS E-942		07/01	DANNY THRIFT	1	ICP/0730	ICP/1930
HEQB O-547		06/12	RODNEY HELZER	1	ICP/0730	ICP/1930
EXCA - VIN# GXHFE E-622		07/01	BUCK RODDENBERRY	1	ICP/0730	ICP/1930
DOZ3 - VIN# 302873 E-623		07/01	KELLY PITTMAN	1	ICP/0730	ICP/1930
READ O-803		06/13	MICHAEL CRAWFORD	1	ICP/0730	ICP/1930
FOBS O-828		06/15	RANDY SMITH	1	ICP/0730	ICP/1930
SOF2 O-813		06/20	RANDY MILLER	1	ICP/0730	ICP/1930
<b>8. Division/Group Communication Summary</b>						
Function	Channel	RX Frequency N/W	RX Tone/NAC	TX Frequency N/W	TX Tone/NAC	Mode
COMMAND	8	159.2700N	156.7	151.1000N	123.0	A
TACTICAL	13	159.4125N	NONE	159.4125N	NONE	A
AIR TO GROUND	14	166.6750N	NONE	166.6750N	NONE	A
AIR TO GROUND	15	169.1500N	NONE	169.1500N	NONE	A
AIR GUARD	16	168.6250N	NONE	168.6250N	110.9	A
<b>9. Prepared By (Resource Unit Leader)</b>			<b>Approved By (Planning Section Chief)</b>		<b>Date</b>	<b>Time</b>
FRED NOACK			SHAUN STEWART, PSC2 (T)		06/09/2017	1800

## Division/Group Assignment List (ICS 204 WF)

<b>1. Incident Name:</b>			<b>3.</b>			
WEST MIMS			<b>Branch:</b>		<b>Division/Group:</b>	
<b>2. Operational Period:</b> <b>DAY SHIFT 0730-1930</b>			<b>I</b>		<b>B/C</b>	
Date/Time From: 06/10/2017 0730                    SAT		Date/Time To: 06/10/2017 1930                    SAT				
<b>4. Operations Personnel</b>						
<b>PLANNING OPERATIONS CHIEF</b>		DAVID SMITH (T)		<b>OPERATIONS CHIEF</b>		
				RICK DOLAN BUCK KLINE		
<b>BRANCH DIRECTOR</b>				<b>DIVISION/GROUP SUPERVISOR</b>		
				CHRIS ROBERTS - 6/11		
<b>SAFETY</b>		LARRY GRUBBS LUCAS MINTON (T)		<b>AIR TACTICAL GROUP SUPERVISOR</b>		
<b>6. Control Operations/Work Assignments:</b>						
Task						
<ul style="list-style-type: none"> <li>• Repair Sapp's Prairie to original state.</li> <li>• Patrol and mop up fuels appropriate to fuel type and anticipated weather and fire behavior.</li> <li>• Respond to any new starts within the division.</li> <li>• Create or improve fireline around logging debris in coordination with logging operators.</li> </ul>						
Purpose						
<ul style="list-style-type: none"> <li>• Return Wilderness to original state.</li> <li>• Keep fire east of swamp edge fire break.</li> <li>• Keep fire north of GA 94/FL 2.</li> </ul>						
End State						
<ul style="list-style-type: none"> <li>• Sapp's Prairie to original state.</li> <li>• Fire is contained by adequate control line to reduce threat to escape; minimizing damage to private timberland, private lands, and other resource values at risk.</li> </ul>						
<b>7. Special Instructions:</b>						
<p>Ensure LCES is in place before operations begin and stay hydrated. Drive defensively and with lights on at all times. Identify escape routes. Logging operations are continuing. Stay clear of cutting areas. Please be mindful of logging operations that will be ongoing. Ensure that all personnel stay clear of felling operations. Pay attention for potential reburn in logging areas. Work with Gilyard Logging foreman on any suppression actions within the logging area. Use caution when working around logging operations.</p> <p><b><u>For IA protocol see page 7.</u></b></p> <p>Additional Resources:            Superior Pine Tractor Plow D-6; SP-83, SP-85, SP-87            Medical Emergency Channel: Command            ETA for Ambulance to Scene:            Air: 20-30 minutes            Ground: 10-15 minutes, paved roads only.            IWI - IC or approved person will use Channel 16 (Air Guard) for contact with air ambulance.</p>						
<b>8. Division/Group Communication Summary</b>						
Function	Channel	RX Frequency N/W	RX Tone/NAC	TX Frequency N/W	TX Tone/NAC	Mode
COMMAND	8	159.2700N	156.7	151.1000N	123.0	A
TACTICAL	13	159.4125N	NONE	159.4125N	NONE	A
AIR TO GROUND	14	166.6750N	NONE	166.6750N	NONE	A
AIR TO GROUND	15	169.1500N	NONE	169.1500N	NONE	A
AIR GUARD	16	168.6250N	NONE	168.6250N	110.9	A
<b>9. Prepared By (Resource Unit Leader)</b>			<b>Approved By (Planning Section Chief)</b>		<b>Date</b>	<b>Time</b>
FRED NOACK			SHAUN STEWART, PSC2 (T)		06/09/2017	1800

## Division/Group Assignment List (ICS 204 WF)

<b>1. Incident Name:</b>			<b>3.</b>			
WEST MIMS			<b>Branch:</b>		<b>Division/Group:</b>	
<b>2. Operational Period:</b> DAY SHIFT 0730-1930			<b>I</b>		<b>D</b>	
Date/Time From: 06/10/2017 0730 SAT		Date/Time To: 06/10/2017 1930 SAT				
<b>4. Operations Personnel</b>						
<b>PLANNING OPERATIONS CHIEF</b>		DAVID SMITH (T)		<b>OPERATIONS CHIEF</b>		RICK DOLAN BUCK KLINE
<b>BRANCH DIRECTOR</b>				<b>DIVISION/GROUP SUPERVISOR</b>		WALTER BOWERS - 6/11
<b>SAFETY</b>		LARRY GRUBBS LUCAS MINTON (T)		<b>AIR TACTICAL GROUP SUPERVISOR</b>		RONNIE RUCKER MARK NUNEZ
<b>5. Resources Assigned this Period</b>						
Strike Team / Task Force / Resource Designator		LWD	Leader	Number Persons	Drop Off PT./Time	Pick Up PT./Time
TFLD O-792		06/10	TOM ROACH	1	ICP/0730	ICP/1930
ENG6 AR-OUF 691 E-838		06/13	RAYMOND SELF	3	ICP/0730	ICP/1930
ENG6 WY-RSD 1602 E-849		06/14	FRANK HAINES	4	ICP/0730	ICP/1930
TFLD O-850		06/15	JAMES SEARCY	1	ICP/0730	ICP/1930
EXCA - HUGHES RENTALS - FWS-OKR- E-1032		07/01	HARRIS WILSON	1	ICP/0730	ICP/1930
DOZ3 - HUGHES RENTALS - FSW-OKR- E-1033		07/01	DANNON PITTMAN	1	ICP/0730	ICP/1930
TRAC - HUGHES RENTAL - FWS-OKR- E-1035		07/01	JAMES GASKINS	1	ICP/0730	ICP/1930
MEC - HUGHES RENTAL - FWS-OKR- E-1036		07/01	DONALD DEAN	1	ICP/0730	ICP/1930
READ O-803		06/13	MICHAEL CRAWFORD	1	ICP/0730	ICP/1930
FOBS O-844		06/15	ERIK APLAND	1	ICP/0730	ICP/1930
SOF2 O-813		06/20	RANDY MILLER	1	ICP/0730	ICP/1930
<b>8. Division/Group Communication Summary</b>						
Function	Channel	RX Frequency N/W	RX Tone/NAC	TX Frequency N/W	TX Tone/NAC	Mode
COMMAND	2	159.1200N	NONE	151.3700N	100.0	A
TACTICAL	1	154.2800N	NONE	154.2800N	156.7	A
AIR TO GROUND	14	166.6750N	NONE	166.6750N	NONE	A
AIR TO GROUND	15	169.1500N	NONE	169.1500N	NONE	A
AIR GUARD	16	168.6250N	NONE	168.6250N	110.9	A
<b>9. Prepared By (Resource Unit Leader)</b>			<b>Approved By (Planning Section Chief)</b>		<b>Date</b>	<b>Time</b>
FRED NOACK			SHAUN STEWART, PSC2 (T)		06/09/2017	1800

## Division/Group Assignment List (ICS 204 WF)

<b>1. Incident Name:</b>			<b>3.</b>			
WEST MIMS			<b>I</b>	<b>D</b>		
<b>2. Operational Period:</b> DAY SHIFT 0730-1930						
Date/Time From: 06/10/2017 0730	SAT	Date/Time To: 06/10/2017 1930	SAT			
<b>4. Operations Personnel</b>						
<b>PLANNING OPERATIONS CHIEF</b>		DAVID SMITH (T)		<b>OPERATIONS CHIEF</b>		RICK DOLAN BUCK KLINE
<b>BRANCH DIRECTOR</b>				<b>DIVISION/GROUP SUPERVISOR</b>		WALTER BOWERS - 6/11
<b>SAFETY</b>		LARRY GRUBBS LUCAS MINTON (T)		<b>AIR TACTICAL GROUP SUPERVISOR</b>		RONNIE RUCKER MARK NUNEZ
<b>6. Control Operations/Work Assignments:</b>						
Task						
<ul style="list-style-type: none"> <li>Patrol and mop up fuels appropriate to fuel type and anticipated weather and fire behavior.</li> <li>Respond to any new starts within the division.</li> <li>Monitor fire activity and location in the vicinity of Billies Island.</li> </ul>						
Purpose						
<ul style="list-style-type: none"> <li>Keep fire south of the Suwannee Canal.</li> </ul>						
End State						
<ul style="list-style-type: none"> <li>Fire is contained by adequate control line to reduce threat to escape; minimizing damage to private timberlands, private lands, and other resource values at risk.</li> </ul>						
<b>7. Special Instructions:</b>						
Ensure LCES is in place before operations begin and stay hydrated. Drive defensively and with lights on at all times. Identify escape routes.						
For IA protocol see page 7.						
Medical Emergency Channel: Command						
ETA for Ambulance to Scene:						
Air: 20-30 minutes						
Ground: 10-15 minutes, paved roads only.						
IWI - IC or approved person will use Channel 16 (Air Guard) for contact with air ambulance.						
Air Ambulance landing zone to be determined by IWI - IC.						
Utilize engines to provide dust abatement, as needed, prior to air ambulance landing.						
<b>8. Division/Group Communication Summary</b>						
Function	Channel	RX Frequency N/W	RX Tone/NAC	TX Frequency N/W	TX Tone/NAC	Mode
COMMAND	2	159.1200N	NONE	151.3700N	100.0	A
TACTICAL	1	154.2800N	NONE	154.2800N	156.7	A
AIR TO GROUND	14	166.6750N	NONE	166.6750N	NONE	A
AIR TO GROUND	15	169.1500N	NONE	169.1500N	NONE	A
AIR GUARD	16	168.6250N	NONE	168.6250N	110.9	A
<b>9. Prepared By (Resource Unit Leader)</b>			<b>Approved By (Planning Section Chief)</b>		<b>Date</b>	<b>Time</b>
FRED NOACK			SHAUN STEWART, PSC2 (T)		06/09/2017	1800

## Division/Group Assignment List (ICS 204 WF)

<b>1. Incident Name:</b>			<b>3.</b>			
WEST MIMS			<b>III</b>		<b>Division/Group:</b>	
<b>2. Operational Period:</b> DAY SHIFT 0730-1930					<b>INITIAL ATTACK EAST</b>	
Date/Time From: 06/10/2017 0730 SAT		Date/Time To: 06/10/2017 1930 SAT				
<b>4. Operations Personnel</b>						
<b>PLANNING OPERATIONS CHIEF</b>		DAVID SMITH (T) 6/11		<b>OPERATIONS CHIEF</b>		
<b>BRANCH DIRECTOR</b>		MIKE BRUNSON (6/13)		<b>DIVISION/GROUP SUPERVISOR</b>		
<b>SAFETY</b>		LARRY CONNELL		RICK DOLAN; FRED BOEHM BUTCH GALBRAITH (T) 6/18 DONALD HARRIS 6/17 ADAM MCCULLOUGH (T) 6/13		
<b>5. Resources Assigned this Period</b>						
Strike Team / Task Force / Resource Designator		LWD	Leader	Number Persons	Drop Off PT./Time	Pick Up PT./Time
ENG6 NC-POR PLE1 E-2		06/10	LINWOOD BECKWITH	1	EAST CAMP/0730	EAST CAMP/1930
ENG6 OK 4261 E-36		06/18	WES O'CONNER	1	EAST CAMP/0730	EAST CAMP/1930
TPL2 OKE 56 E-35		06/13	WAYNE SMITH	1	EAST CAMP/0730	EAST CAMP/1930
TPL2 SC-CRR D-223 E-240			UNSTAFFED		EAST CAMP/0730	EAST CAMP/1930
TPL2 GA-SAR D922 E-288			UNSTAFFED		EAST CAMP/0730	EAST CAMP/1930
DO22 OKE 54 E-34		06/13	MATT BROWN	1	EAST CAMP/0730	EAST CAMP/1330
<b>6. Control Operations/Work Assignments:</b>						
<b>Task</b>						
<ul style="list-style-type: none"> <li>• Respond to any new starts as requested by OKR duty officer.</li> <li>• Coordinate initial attack action with assigned aviation and/or ground assets.</li> </ul>						
<b>Purpose</b>						
<ul style="list-style-type: none"> <li>• Ensure timely response on any initial attack within OKR jurisdictional boundaries and vicinity.</li> </ul>						
<b>End State</b>						
<ul style="list-style-type: none"> <li>• Fire activity has been detected and appropriate action has been initiated.</li> </ul>						
<b>8. Division/Group Communication Summary</b>						
Function	Channel	RX Frequency N/W	RX Tone/NAC	TX Frequency N/W	TX Tone/NAC	Mode
COMMAND	ZONE 2 / CH 7	159.2700N	156.7	151.1000N	100.0	A
COMMAND	ZONE 2 / CH 8	159.2700N	156.7	151.1000N	123.0	A
TACTICAL	ZONE 2 / CH 12	159.4425N	NONE	159.4425N	NONE	A
AIR TO GROUND	ZONE 2 / CH 14	166.6750N	NONE	166.6750N	NONE	A
AIR TO GROUND	ZONE 2 / CH 15	169.1500N	NONE	169.1500N	NONE	A
AIR GUARD	ZONE 2 / CH 16	168.6250N	NONE	168.6250N	110.9	A
<b>9. Prepared By (Resource Unit Leader)</b>		<b>Approved By (Planning Section Chief)</b>		<b>Date</b>		<b>Time</b>
FRED NOACK		SHAUN STEWART, PSC2 (T)		06/09/2017		1800

## Division/Group Assignment List (ICS 204 WF)

<b>1. Incident Name:</b>			<b>3.</b>						
WEST MIMS			<b>III</b>	<b>Branch:</b>		<b>Division/Group:</b>			
<b>2. Operational Period:</b> DAY SHIFT 0730-1930				<b>INITIAL ATTACK EAST</b>					
Date/Time From: 06/10/2017 0730 SAT		Date/Time To: 06/10/2017 1930 SAT							
<b>4. Operations Personnel</b>									
<b>PLANNING OPERATIONS CHIEF</b>		DAVID SMITH (T) 6/11		<b>OPERATIONS CHIEF</b>		RICK DOLAN; FRED BOEHM BUTCH GALBRAITH (T) 6/18			
<b>BRANCH DIRECTOR</b>		MIKE BRUNSON (6/13)		<b>DIVISION/GROUP SUPERVISOR</b>		DONALD HARRIS 6/17 ADAM MCCULLOUGH (T) 6/13			
<b>SAFETY</b>		LARRY CONNELL							
<b>7. Special Instructions:</b>									
<p>Contact Resource Advisors for any cultural or archeological needs, as well as, RCW concerns.                  Ensure LCES is in place before operations begin and stay hydrated.                  Drive defensively and with lights on at all times.                  Communications: Use the tactical channel for the division you are in.                  Staging on east side at Refuge office.</p> <p>Use caution when working around logging operations.</p> <p>Medical Emergency Channel: Command                  ETA for Ambulance to Scene:                  Air: 20 – 30 mins                  Ground: 10 - 15 mins Paved roads only.                  IWI – IC or approved person will use Channel 16 (Air Guard) for contact with air ambulance                  Air Ambulance landing zone to be determined by IWI – IC                  Utilize engines to provide dust abatement, as needed, prior to air ambulance landing</p> <p><b>For IA protocol see page 7</b></p>									
<b>8. Division/Group Communication Summary</b>									
Function	Channel	RX Frequency N/W	RX Tone/NAC	TX Frequency N/W	TX Tone/NAC	Mode			
COMMAND	ZONE 2 / CH 7	159.2700N	156.7	151.1000N	100.0	A			
COMMAND	ZONE 2 / CH 8	159.2700N	156.7	151.1000N	123.0	A			
TACTICAL	ZONE 2 / CH 12	159.4425N	NONE	159.4425N	NONE	A			
AIR TO GROUND	ZONE 2 / CH 14	166.6750N	NONE	166.6750N	NONE	A			
AIR TO GROUND	ZONE 2 / CH 15	169.1500N	NONE	169.1500N	NONE	A			
AIR GUARD	ZONE 2 / CH 16	168.6250N	NONE	168.6250N	110.9	A			
<b>9. Prepared By (Resource Unit Leader)</b>			<b>Approved By (Planning Section Chief)</b>			<b>Date</b>		<b>Time</b>	
FRED NOACK			SHAUN STEWART, PSC2 (T)			06/09/2017		1800	

## Division/Group Assignment List (ICS 204 WF)

<b>1. Incident Name:</b>			<b>3.</b>			
WEST MIMS			<b>III</b>		<b>M/N/O</b>	
<b>2. Operational Period:</b> DAY SHIFT 0730-1930						
Date/Time From: 06/10/2017 0730 SAT		Date/Time To: 06/10/2017 1930 SAT				
<b>4. Operations Personnel</b>						
<b>PLANNING OPERATIONS CHIEF</b>		DAVID SMITH (T) 6/11		<b>OPERATIONS CHIEF</b>		RICK DOLAN; FRED BOEHM BUTCH GALBRAITH (T) - 6/18
<b>BRANCH DIRECTOR</b>		MICHAEL H BRUNSON 6/13		<b>DIVISION/GROUP SUPERVISOR</b>		BRENT VAN GUNDY 6/14;
<b>SAFETY</b>		LARRY CONNELL				
<b>5. Resources Assigned this Period</b>						
Strike Team / Task Force / Resource Designator		LWD	Leader	Number Persons	Drop Off PT./Time	Pick Up PT./Time
ENG6 FWS 462 E-261		06/18	GRANT LOVATO	3	EAST CAMP/0730	EAST CAMP/1930
ENG6 MBF 694 E-776		06/17	BOOKER KRAMSCHUSTER	3	EAST CAMP/0730	EAST CAMP/1930
ENG6 MES 6198 E-871		06/16	MARK ROUSSEAU	3	EAST CAMP/0730	EAST CAMP/1930
EXCA T2 WILDLANDS FIRE SERVICE E-997		06/14	JEFF GHINTER	1	EAST CAMP/0730	EAST CAMP/1930
HC2IA - JACKSON BLM C-16		06/12	FRED ASHFORD	20	EAST CAMP/0730	EAST CAMP/1930
READ O-802		06/14	JOHN P DUNLAP	1	EAST CAMP/0730	EAST CAMP/1930
FOBS O-797		06/11	JACOB ROBERT HOPPE	1	EAST CAMP/0730	EAST CAMP/1930
FOBS O-827		06/15	JUSTIN CORRELL	1	EAST CAMP/0730	EAST CAMP/1930
FOBS O-829		06/14	MICHAEL L TRIERWEILER	1	EAST CAMP/0730	EAST CAMP/1930
FOBS O-830		06/15	JONATHAN A MANN	1	EAST CAMP/0730	EAST CAMP/1930
SOF2 O-814		06/10	STEVEN R DAVIS	1	EAST CAMP/0730	EAST CAMP/1930
<b>8. Division/Group Communication Summary</b>						
Function	Channel	RX Frequency N/W	RX Tone/NAC	TX Frequency N/W	TX Tone/NAC	Mode
COMMAND	ZONE 2 / CH 3	159.1200N	NONE	151.3700N	82.5	A
TACTICAL	ZONE 2 / CH 11	163.7125N	NONE	163.7125N	NONE	A
AIR TO GROUND	ZONE 2 / CH 14	166.6750N	NONE	166.6750N	NONE	A
AIR TO GROUND	ZONE 2 / CH 15	169.1500N	NONE	169.1500N	NONE	A
AIR GUARD	ZONE 2 / CH 16	168.6250N	NONE	168.6250N	110.9	A
<b>9. Prepared By (Resource Unit Leader)</b>			<b>Approved By (Planning Section Chief)</b>		<b>Date</b>	<b>Time</b>
FRED NOACK			SHAUN STEWART, PSC2 (T)		06/09/2017	1800

## Division/Group Assignment List (ICS 204 WF)

<b>1. Incident Name:</b>			<b>3.</b>			
WEST MIMS			<b>III</b>		<b>M/N/O</b>	
<b>2. Operational Period:</b> DAY SHIFT 0730-1930						
Date/Time From: 06/10/2017 0730 SAT		Date/Time To: 06/10/2017 1930 SAT				
<b>4. Operations Personnel</b>						
<b>PLANNING OPERATIONS CHIEF</b>		DAVID SMITH (T) 6/11		<b>OPERATIONS CHIEF</b>		RICK DOLAN; FRED BOEHM BUTCH GALBRAITH (T) - 6/18
<b>BRANCH DIRECTOR</b>		MICHAEL H BRUNSON 6/13		<b>DIVISION/GROUP SUPERVISOR</b>		BRENT VAN GUNDY 6/14;
<b>SAFETY</b>		LARRY CONNELL				
<b>6. Control Operations/Work Assignments:</b>						
<b>Task</b>						
<ul style="list-style-type: none"> <li>• Respond to any new starts within the division.</li> <li>• Patrol and mop up fuels appropriate to fuel type and anticipated weather and fire behavior.</li> </ul>						
<b>Purpose</b>						
<ul style="list-style-type: none"> <li>• Keep fire within established fire containment lines.</li> </ul>						
<b>End State</b>						
<ul style="list-style-type: none"> <li>• Fire is contained by adequate control line to reduce threat to escape; minimizing damage to private timberlands, private lands, and other resource values at risk.</li> </ul>						
<b>7. Special Instructions:</b>						
Ensure LCES are in place before operations begin and stay hydrated. Drive defensively and with lights on at all times. Identify escape routes. Use caution when working around logging operations.						
 <b>Resources are working in the St. George Zone.</b>						
 <b>For IA protocol see page 7</b>						
<b>Medical Emergency Channel: Command</b>						
<b>ETA for Ambulance to Scene:</b>						
Air: 20 – 30 mins						
Ground: 10 - 15 mins Paved roads only.						
IWI – IC or approved person will use Channel 16 (Air Guard) for contact with air ambulance						
Air Ambulance landing zone to be determined by IWI – IC						
Utilize engines to provide dust abatement, as needed, prior to air ambulance landing						
<b>8. Division/Group Communication Summary</b>						
Function	Channel	RX Frequency N/W	RX Tone/NAC	TX Frequency N/W	TX Tone/NAC	Mode
COMMAND	ZONE 2 / CH 3	159.1200N	NONE	151.3700N	82.5	A
TACTICAL	ZONE 2 / CH 11	163.7125N	NONE	163.7125N	NONE	A
AIR TO GROUND	ZONE 2 / CH 14	166.6750N	NONE	166.6750N	NONE	A
AIR TO GROUND	ZONE 2 / CH 15	169.1500N	NONE	169.1500N	NONE	A
AIR GUARD	ZONE 2 / CH 16	168.6250N	NONE	168.6250N	110.9	A
<b>9. Prepared By (Resource Unit Leader)</b>			<b>Approved By (Planning Section Chief)</b>		<b>Date</b>	<b>Time</b>
FRED NOACK			SHAUN STEWART, PSC2 (T)		06/09/2017	1800



## Division/Group Assignment List (ICS 204 WF)

<b>1. Incident Name:</b>			<b>3.</b>			
WEST MIMS			<b>Branch:</b>		<b>Division/Group:</b>	
<b>2. Operational Period:</b> <b>DAY SHIFT 0730-1930</b>			<b>IV</b>		<b>A/Y</b>	
Date/Time From: 06/10/2017 0730                    SAT		Date/Time To: 06/10/2017 1930                    SAT				
<b>4. Operations Personnel</b>						
<b>PLANNING OPERATIONS CHIEF</b>		DAVID SMITH (T) 6/11		<b>OPERATIONS CHIEF</b>		RICK DOLAN; FRED BOEHM BUTCH GALBRAITH (T) - 6/18
<b>BRANCH DIRECTOR</b>		MICHAEL WORK 6/11		<b>DIVISION/GROUP SUPERVISOR</b>		RANDY GREGORY 6/11
<b>SAFETY</b>		LARRY CONNELL				
<b>5. Resources Assigned this Period</b>						
Strike Team / Task Force / Resource Designator		LWD	Leader	Number Persons	Drop Off PT./Time	Pick Up PT./Time
TFLD O-851		06/15	CHARLES ROBERT DAVIS	1	EAST CAMP/0730	EAST CAMP/1930
ENG6 6171 E-77		06/19	MATTHEW BLAKE POTTS	4	EAST CAMP/0730	EAST CAMP/1930
READ O-802		06/14	JOHN P DUNLAP	1	EAST CAMP/0730	EAST CAMP/1930
DINS O-866		06/16	CATHY L BLACK	1	EAST CAMP/0730	EAST CAMP/1930
DINS O-867		06/16	ELBERT W EARLEY	1	EAST CAMP/0730	EAST CAMP/1930
SOF2 O-814		06/18	STEVEN R DAVIS	1	EAST CAMP/0730	EAST CAMP/1930
<b>6. Control Operations/Work Assignments:</b>						
<b>Task</b>						
<ul style="list-style-type: none"> <li>• Respond to any new starts within the division.</li> <li>• Patrol and mop up fuels appropriate to fuel type and anticipated weather and fire behavior. Eliminate obvious smoke which will trigger unnecessary calls to 911 system.</li> </ul>						
<b>Purpose</b>						
<ul style="list-style-type: none"> <li>• Keep fire within established fire containment lines.</li> </ul>						
<b>End State</b>						
<ul style="list-style-type: none"> <li>• Fire is contained by adequate control line to reduce threat to escape; minimizing damage to private timberlands, private lands, and other resource values at risk.</li> </ul>						
<b>8. Division/Group Communication Summary</b>						
Function	Channel	RX Frequency N/W	RX Tone/NAC	TX Frequency N/W	TX Tone/NAC	Mode
COMMAND	ZONE 2 / CH 8	159.2700N	156.7	151.1000N	123.0	A
TACTICAL	ZONE 2 / CH 9	159.2850N	NONE	159.2850N	156.7	A
AIR TO GROUND	ZONE 2 / CH 14	166.6750N	NONE	166.6750N	NONE	A
AIR TO GROUND	ZONE 2 / CH 15	169.1500N	NONE	169.1500N	NONE	A
AIR GUARD	ZONE 2 / CH 16	168.6250N	NONE	168.6250N	110.9	A
<b>9. Prepared By (Resource Unit Leader)</b>			<b>Approved By (Planning Section Chief)</b>		<b>Date</b>	<b>Time</b>
FRED NOACK			SHAUN STEWART, PSC2 (T)		06/09/2017	1800

## Division/Group Assignment List (ICS 204 WF)

<b>1. Incident Name:</b>			<b>3.</b>			
WEST MIMS			<b>IV</b>	<b>Division/Group: A/Y</b>		
<b>2. Operational Period:</b> DAY SHIFT 0730-1930						
Date/Time From:	SAT	Date/Time To:	SAT			
06/10/2017 0730		06/10/2017 1930				
<b>4. Operations Personnel</b>						
<b>PLANNING OPERATIONS CHIEF</b>	DAVID SMITH (T) 6/11		<b>OPERATIONS CHIEF</b>	RICK DOLAN; FRED BOEHM BUTCH GALBRAITH (T) - 6/18		
<b>BRANCH DIRECTOR</b>	MICHAEL WORK 6/11		<b>DIVISION/GROUP SUPERVISOR</b>	RANDY GREGORY 6/11		
<b>SAFETY</b>	LARRY CONNELL					
<b>7. Special Instructions:</b>						
<p><b>Division Y will be working in St. George Zone.</b></p> <p>Ensure LCES is in place before operations begin and stay hydrated. Drive defensively and with lights on at all times. Identify escape routes. Bridge near DP 9 restricted to pickups - No engines. Bridge on swamp perimeter road just east of first Branch has steep drop offs - 1 lane travel - watch for barricades.</p> <p><b>Use caution when working around logging operations.</b></p> <p><b>For IA protocol see page 7</b></p> <p><b>Medical Emergency Channel: Command</b>  <b>ETA for Ambulance to Scene:</b>  <b>Air: 20 – 30 mins</b>  <b>Ground: 10 - 15 mins Paved roads only.</b>  <b>IWI – IC or approved person will use Channel 16 (Air Guard) for contact with air ambulance</b>  <b>Air Ambulance landing zone to be determined by IWI – IC</b>  <b>Utilize engines to provide dust abatement, as needed, prior to air ambulance landing</b></p>						
<b>8. Division/Group Communication Summary</b>						
Function	Channel	RX Frequency N/W	RX Tone/NAC	TX Frequency N/W	TX Tone/NAC	Mode
COMMAND	ZONE 2 / CH 8	159.2700N	156.7	151.1000N	123.0	A
TACTICAL	ZONE 2 / CH 9	159.2850N	NONE	159.2850N	156.7	A
AIR TO GROUND	ZONE 2 / CH 14	166.6750N	NONE	166.6750N	NONE	A
AIR TO GROUND	ZONE 2 / CH 15	169.1500N	NONE	169.1500N	NONE	A
AIR GUARD	ZONE 2 / CH 16	168.6250N	NONE	168.6250N	110.9	A
<b>9. Prepared By (Resource Unit Leader)</b>			<b>Approved By (Planning Section Chief)</b>		<b>Date</b>	<b>Time</b>
FRED NOACK			SHAUN STEWART, PSC2 (T)		06/09/2017	1800

## Division/Group Assignment List (ICS 204 WF)

<b>1. Incident Name:</b>			<b>3.</b>			
WEST MIMS			<b>Branch:</b>		<b>Division/Group:</b>	
<b>2. Operational Period:</b> DAY SHIFT 0730-1930			<b>IV</b>		<b>Z</b>	
Date/Time From: 06/10/2017 0730 SAT		Date/Time To: 06/10/2017 1930 SAT				
<b>4. Operations Personnel</b>						
<b>PLANNING OPERATIONS CHIEF</b>		DAVID SMITH (T) 6/11		<b>OPERATIONS CHIEF</b>		RICK DOLAN; FRED BOEM BUTCH GALBRAITH (T) - 6/18
<b>BRANCH DIRECTOR</b>		MICHAEL WORK 6/11		<b>DIVISION/GROUP SUPERVISOR</b>		JASON LONGFELLOW 6/11
<b>SAFETY</b>		LARRY CONNELL				
<b>5. Resources Assigned this Period</b>						
Strike Team / Task Force / Resource Designator		LWD	Leader	Number Persons	Drop Off PT./Time	Pick Up PT./Time
ENG6 E-641 LEE E-1008		06/12	JAMES E COLLETT	2	EAST CAMP/0730	EAST CAMP/1930
EXCA2 - WILDLANDS FIRE SERVICE 113984 E-996		07/01	ROY ROWEN	2	EAST CAMP/0730	EAST CAMP/1930
READ O-802		06/14	JOHN P DUNLAP	1	EAST CAMP/0730	EAST CAMP/1930
SOF2 O-814		06/18	STEVEN R DAVIS	1	EAST CAMP/0730	EAST CAMP/1930
<b>6. Control Operations/Work Assignments:</b>						
Task						
<ul style="list-style-type: none"> <li>• Respond to any new starts within the division.</li> <li>• Patrol and mop up fuels appropriate to fuel type and anticipated weather and fire behavior.</li> <li>• Rehabilitate contingency line.</li> </ul>						
Purpose						
<ul style="list-style-type: none"> <li>• Keep fire within established fire containment lines.</li> </ul>						
End State						
<ul style="list-style-type: none"> <li>• Fire is contained by adequate control line to reduce threat to escape; minimizing damage to private timberlands, private lands, and other resource values at risk.</li> </ul>						
<b>7. Special Instructions:</b>						
Division Z will be working in St. George Zone.						
Use caution when working around logging operations.						
Medical Emergency Channel: Command						
ETA for Ambulance to Scene:						
<b>8. Division/Group Communication Summary</b>						
Function	Channel	RX Frequency N/W	RX Tone/NAC	TX Frequency N/W	TX Tone/NAC	Mode
COMMAND	ZONE 2 / CH 8	159.2700N	156.7	151.1000N	123.0	A
TACTICAL	ZONE 2 / CH 10	168.3500N	NONE	168.3500N	NONE	A
AIR TO GROUND	ZONE 2 / CH 14	166.6750N	NONE	166.6750N	NONE	A
AIR TO GROUND	ZONE 2 / CH 15	169.1500N	NONE	169.1500N	NONE	A
AIR GUARD	ZONE 2 / CH 16	168.6250N	NONE	168.6250N	110.9	A
<b>9. Prepared By (Resource Unit Leader)</b>			<b>Approved By (Planning Section Chief)</b>		<b>Date</b>	<b>Time</b>
FRED NOACK			SHAUN STEWART, PSC2 (T)		06/09/2017	1800

## Division/Group Assignment List (ICS 204 WF)

<b>1. Incident Name:</b>			<b>3.</b>			
WEST MIMS			<b>IV</b>	<b>Z</b>		
<b>2. Operational Period:</b> DAY SHIFT 0730-1930						
Date/Time From:	SAT	Date/Time To:	SAT			
06/10/2017 0730		06/10/2017 1930				
<b>4. Operations Personnel</b>						
<b>PLANNING OPERATIONS CHIEF</b>	DAVID SMITH (T) 6/11		<b>OPERATIONS CHIEF</b>	RICK DOLAN; FRED BOEM BUTCH GALBRAITH (T) - 6/18		
<b>BRANCH DIRECTOR</b>	MICHAEL WORK 6/11		<b>DIVISION/GROUP SUPERVISOR</b>	JASON LONGFELLOW 6/11		
<b>SAFETY</b>	LARRY CONNELL					
<b>7. Special Instructions:</b>						
<p>Air: 20 – 30 mins                      Ground: 10 - 15 mins Paved roads only.                      IWI – IC or approved person will use Channel 16 (Air Guard) for contact with air ambulance                      Air Ambulance landing zone to be determined by IWI – IC                      Utilize engines to provide dust abatement, as needed, prior to air ambulance landing  <b>For IA protocol see page 7</b></p>						
<b>8. Division/Group Communication Summary</b>						
Function	Channel	RX Frequency N/W	RX Tone/NAC	TX Frequency N/W	TX Tone/NAC	Mode
COMMAND	ZONE 2 / CH 8	159.2700N	156.7	151.1000N	123.0	A
TACTICAL	ZONE 2 / CH 10	168.3500N	NONE	168.3500N	NONE	A
AIR TO GROUND	ZONE 2 / CH 14	166.6750N	NONE	166.6750N	NONE	A
AIR TO GROUND	ZONE 2 / CH 15	169.1500N	NONE	169.1500N	NONE	A
AIR GUARD	ZONE 2 / CH 16	168.6250N	NONE	168.6250N	110.9	A
<b>9. Prepared By (Resource Unit Leader)</b>			<b>Approved By (Planning Section Chief)</b>		<b>Date</b>	<b>Time</b>
FRED NOACK			SHAUN STEWART, PSC2 (T)		06/09/2017	1800

## Division/Group Assignment List (ICS 204 WF)

<b>1. Incident Name:</b>			<b>3.</b>			
WEST MIMS			<b>Branch:</b>		<b>Division/Group:</b>	
<b>2. Operational Period:</b> DAY SHIFT 0730-1930			<b>ROAD MAINT</b>		<b>ROAD MAINT</b>	
Date/Time From: 06/10/2017 0730 SAT		Date/Time To: 06/10/2017 1930 SAT				
<b>4. Operations Personnel</b>						
<b>PLANNING OPERATIONS CHIEF</b>		DAVID SMITH (T)		<b>OPERATIONS CHIEF</b>		RICK DOLAN; FRED BOEHM BUTCH GALBRAITH (T) 6/18
<b>BRANCH DIRECTOR</b>				<b>DIVISION/GROUP SUPERVISOR</b>		JEROMY WILSON 6/10
<b>SAFETY</b>		LARRY CONNELL		<b>AIR TACTICAL GROUP SUPERVISOR</b>		
<b>5. Resources Assigned this Period</b>						
Strike Team / Task Force / Resource Designator		LWD	Leader	Number Persons	Drop Off PT./Time	Pick Up PT./Time
TFLD O-794		06/11	MICHAEL KOLB	1	EAST CAMP/0730	EAST CAMP/1930
EXCA V# 500242 E-626		07/01	CRAIG CLOUD	1	EAST CAMP/0730	EAST CAMP/1930
TFLD O-793		06/10	BRENT SAWYER	1	EAST CAMP/0730	EAST CAMP/1930
GRD2 R.O.T. RANCH E-234		07/01	ROBBY WORRELL	1	EAST CAMP/0730	EAST CAMP/1930
READ O-802		06/14	JOHN P DUNLAP	1	EAST CAMP/0730	EAST CAMP/1930
<b>6. Control Operations/Work Assignments:</b>						
<b>Task</b>						
<ul style="list-style-type: none"> <li>• Assess access roads to fire perimeter; repair or maintain as necessary in accordance with priority list provided by Operations Section Chief.</li> <li>• Provide adequate signage for traffic safety.</li> <li>• Assess single lane bridges and culverts for safety and maintenance needs.</li> </ul>						
<b>Purpose</b>						
<ul style="list-style-type: none"> <li>• To keep adequate vehicular access to the fire perimeter.</li> </ul>						
<b>End State</b>						
<ul style="list-style-type: none"> <li>• Access roads are in a safe and travel worthy condition.</li> <li>•</li> </ul>						
<b>8. Division/Group Communication Summary</b>						
Function	Channel	RX Frequency N/W	RX Tone/NAC	TX Frequency N/W	TX Tone/NAC	Mode
COMMAND	ZONE 2 / CH 3	159.1200N	NONE	151.3700N	82.5	A
COMMAND	ZONE 2 / CH 8	159.2700N	156.7	151.1000N	123.0	A
TACTICAL	ZONE 2 / CH 10	168.3500N	NONE	168.3500N	NONE	A
AIR TO GROUND	ZONE 2 / CH 14	166.6750N	NONE	166.6750N	NONE	A
AIR TO GROUND	ZONE 2 / CH 15	169.1500N	NONE	169.1500N	NONE	A
AIR GUARD	ZONE 2 / CH 16	168.6250N	NONE	168.6250N	110.9	A
<b>9. Prepared By (Resource Unit Leader)</b>			<b>Approved By (Planning Section Chief)</b>		<b>Date</b>	<b>Time</b>
FRED NOACK			SHAUN STEWART, PSC2 (T)		06/09/2017	1800

## Division/Group Assignment List (ICS 204 WF)

<b>1. Incident Name:</b>			<b>3.</b>			
WEST MIMS			<b>ROAD MAINT</b>	<b>Division/Group:  ROAD MAINT</b>		
<b>2. Operational Period:</b> DAY SHIFT 0730-1930						
Date/Time From: 06/10/2017 0730 SAT		Date/Time To: 06/10/2017 1930 SAT				
<b>4. Operations Personnel</b>						
<b>PLANNING OPERATIONS CHIEF</b>	DAVID SMITH (T)		<b>OPERATIONS CHIEF</b>	RICK DOLAN; FRED BOEHM BUTCH GALBRAITH (T) 6/18		
<b>BRANCH DIRECTOR</b>			<b>DIVISION/GROUP SUPERVISOR</b>	JEROMY WILSON 6/10		
<b>SAFETY</b>	LARRY CONNELL		<b>AIR TACTICAL GROUP SUPERVISOR</b>			
<b>7. Special Instructions:</b>						
<p>Check in and out with Division Supervisor when moving between divisions.                      Medical Emergency Channel: Command                      ETA for Ambulance to Scene:                      Air: 20-30 mins                      Ground: 10-15 mins Paved road only.                      IWI - IC or approved person will use Channel 16 (Air Guard) for contact with air ambulance.                      Air Ambulance landing zone to be determined by IWI - IC.                      Utilize engines to provide dust abatement, as needed, prior to air ambulance landing.</p>						
<b>8. Division/Group Communication Summary</b>						
Function	Channel	RX Frequency N/W	RX Tone/NAC	TX Frequency N/W	TX Tone/NAC	Mode
COMMAND	ZONE 2 / CH 3	159.1200N	NONE	151.3700N	82.5	A
COMMAND	ZONE 2 / CH 8	159.2700N	156.7	151.1000N	123.0	A
TACTICAL	ZONE 2 / CH 10	168.3500N	NONE	168.3500N	NONE	A
AIR TO GROUND	ZONE 2 / CH 14	166.6750N	NONE	166.6750N	NONE	A
AIR TO GROUND	ZONE 2 / CH 15	169.1500N	NONE	169.1500N	NONE	A
AIR GUARD	ZONE 2 / CH 16	168.6250N	NONE	168.6250N	110.9	A
<b>9. Prepared By (Resource Unit Leader)</b>			<b>Approved By (Planning Section Chief)</b>		<b>Date</b>	<b>Time</b>
FRED NOACK			SHAUN STEWART, PSC2 (T)		06/09/2017	1800

## Suppression Repair General Information

Suppression repair is underway in some areas of the Fire. While conducting suppression repair activities, please consider the following:

**General Description:** Repair of suppression constructed “fire breaks” is necessary to avoid excessive soil erosion and restore natural landscape surface water flows. While some fire breaks were created in previously undisturbed areas, most fire breaks were created by blading and/or widening existing roads or fire breaks.

**Location (Suitable) Sites:** All Divisions will have some level of suppression repair. Fire personnel are currently mapping repair needs. Branch and Division Supervisors will be provided with maps detailing suppression repair needs.

**Ownership Type:** Suppression repair is needed on Okefenokee NWR, John M. Bethea State Forest, Osceola National Forest, and Georgia Private Lands. It is important to know where you are working as ***repair specifications may vary by landowner type.***

**Coordination of Repair with READs:** Suppression repair work should be done under the direction of Branch or Division Supervisors and done in coordination with Resource Advisors to assure cultural and natural resource concerns have been addressed.

**Completion of Repair:** When specific suppression repairs are completed a READ should be contacted for final verification and documentation in Arc Collector.

\*\*\*\*\*

If any type of **cultural resources or artifacts** are discovered during suppression repair activities, **stop work immediately** and contact a Resource Advisor or Archaeologist.

\*\*\*\*\*

### **Incident Resource Advisors (READ)**

<i>East Side-</i> John Dunlap	850-643-6373
<i>West Side-</i> Mike Crawford	541-778-1891

### **Incident Archaeologists (ARCH)**

Dwight Kirkland - Refuge	912-309-9637
Gerald Brinkley - Refuge	229-454-9734
Chris Lydick – Osceola NF	850-264-3209

**\*\*\*\*\*SEE SUPPRESSION REPAIR STANDARDS ON NEXT TWO PAGES\*\*\*\*\***

## **Suppression Repair Standards for State and Federally Owned Lands**

1. **Permanent Firebreaks:** Berms and other excess soil displaced by firebreak construction should be pulled back into the disturbed area and returned to the original contour or pre-suppression grade. These lines will be identified by the appropriate landowner.

**Firebreaks Constructed In Previously Undisturbed Areas:** Repair of suppression constructed firebreaks is necessary to avoid excessive soil erosion, restore pre-fire landscape surface water flow patterns, and to facilitate movement of wildlife where necessary. Berms, vegetation and other excess soil displaced by firebreak construction should be pulled back into the disturbed area and returned to the original contour. Logs and other debris that are near the firebreak should be placed on the repaired firebreak to deter vehicle traffic.

**Intermittent Stream Crossings:** Firebreaks which cross drainages will be identified and inventoried for necessary repairs. Large debris piles located in these areas will be removed or spread away from wetlands or streams. Where fire lines cross stream channels, it is important to minimize soil movement into the stream and to prevent the stream from cutting a new channel in the firebreak. Use no more than 12-inch-high berms to keep the stream in its banks and direct soil movement away from the channel at crossings and approaches.

**Perennial Stream or Canal Crossings:** Guidance for repair will be provided by Resource Specialists.

2. **Point Locations:**

- a) Incident Facilities: Site specific restoration will be needed
- b) Previously Undisturbed Areas: Pull soil and vegetation from berms back onto the disturbed area. Some areas may require disposal or scattering excess piled vegetation in adjacent areas.

3. **Roads:** Roads identified for repair will need to be graded or reshaped to be brought back to pre-suppression condition.

- a) Clean out, repair or replace damaged road culverts. Old damaged culverts should be removed from site and disposed of properly.
- b) Repair damage to chip sealed roads and paved roads
- c) Repair or replace damaged closure gates and locks.
- d) Repair or replace damaged signs damaged by fire suppression activities.
- e) Cut and fell trees identified as hazards along public access roads or trails.
- f) Large piles of vegetative debris on or near roads should be broken up, mulched, or chipped as appropriate.



## **Suppression Repair Standards for Georgia Privately Owned Lands**

The Georgia Forestry Commission (GFC) initiated the assessment of suppression repair needs within the State of Georgia on private lands. This initial assessment focused on the primary suppression fire line located within Divisions Alfa, Bravo, Charlie, Yankee and Zulu. The suppression activities which would impede the natural flow of water or lead to water quality risks through erosion and sedimentation were identified by coordinates and type of emergency repair needs. The following emergency suppression stabilization and repair actions will need to be implemented on private lands to ensure that suppression fire lines comply with Georgia's Best Management Practices for Forestry (BMPs).

**Stream channels or defined waterways (perennial):** Locations where primary suppression lines intersect stream channels or defined waterways debris will be removed from channel and leveled to pre-fire contour and depth. Berms/piled debris will need to be removed for forty feet from each side of channel. Water bars and turnouts are needed on each side of the channel between ten and twenty feet of the channel approach to prevent sedimentation.

**Stream channels or defined waterways (intermittent):** Locations where primary suppression lines intersect stream channels or defined waterways debris will be removed from channel and leveled to pre-fire contour and depth. Berms/piled debris will need to be removed for twenty feet from each side of channel. Water bars and turnouts are needed on each side of the channel between ten and twenty feet of the channel approach to prevent sedimentation.

**Ephemeral areas:** Locations where primary suppression lines intersect ephemeral areas soil and debris should be pulled back in and scattered as to restore to pre-fire contour and depth.

**Primary and Secondary Roads:** Locations where primary suppression lines intersect established permanent roads water bars and turn outs are needed to ensure water flows are not directed to roadways. Debris and soil should be removed from culvert sites restoring to pre-fire depth and contour.

**Opening of berms:** Locations in which large berms (exceeding three feet in height) for distances greater than 500 feet will need openings created (20 feet in width) on each side of berm (if applicable) to ensure that water can move freely off of and across primary suppression lines.

**Water Quality Risks:** Locations along primary suppression lines identified as posing an immediate and direct threat to water quality should be mitigated through the use of scattered debris and/or native plantings which would rapidly stabilize soil and reduce erosion potential.

**AIR OPERATIONS SUMMARY (ICS220)**

Prepared by: John Bragg

Prepared Date: 6/9/2017

Prepared Time: 17:00

<b>1. INCIDENT NAME:</b> West Mims	<b>2. OPS PERIOD DATE:</b> 6/10/17	<b>START TIME:</b> 0800	<b>END TIME:</b> 2030	<b>SUNRISE:</b> 0624	<b>SUNSET TIME:</b> 2031 (Folkston)
<b>3. REMARKS Safety Notes: Hazards (SEE AND AVOID GENERAL AVIATION TRAFFIC AND AERIAL HAZARDS)</b> -Maintain clear communications; confirm that drop location is clear; ground personnel state: "Clear to Drop" -Incident Aircraft conduct flight following with Pogo Helibase. -CEASE ALL FIRE OPERATIONS AT SUNSET -ALL AIRCRAFT SQUAWK 1255  <b>ORDERING/FLIGHT REQUESTS</b>  -Requests for Reconnaissance missions must go through Operations for pre-approval  <b>E-MAIL AIRCRAFT COSTS DAILY AT END OF SHIFT TO:</b> john_mason@fws.gov			<b>4. READY ALERT AIRCRAFT:</b>  N-350MW (Pogo)		<b>5. TFR:</b> None

6. PERSONNEL	NAME	PHONE #	7. FREQUENCIES	AM	FM	8. FIXED-WING- Type/ Make-Model/ N#/ Base
AOBD	John Bragg	423-483-2798	A/A - Fixed Wing (A-17)	120.3500		
	Air Ops Desk	912-637-5133	A/A - Rotor (A-37)	120.8500		
ASGS	Al Driesbach	805-703-0649	A/G 66 (Primary) (A-5)		166.6750	
			A/G 72 (Secondary) (A-16)		169.1500	
HEB2 - Pogo	Pat Mahoney	720-280-1209	Deck/TOLC (Pogo)		168.0500	TANKERS – As available
HEB2(T) - Pogo	Clinton Agidius	208-691-0155				
HEB2 - Lake City	Eric Bader (FICC)	303-704-1164	Deck (Lake City)		163.100	(T-41) BAE-146 / N374AC / LCQ (Off Thursdays)
	Pogo Helibase (3GE1)	912-496-4415				
	Lake City Helibase (LCQ)	561-512-6333	Air Guard		168.625 (110.9)	

**9. HELICOPTER** Remarks Box Legend: C=Cargo P=Passengers B=Bucket SN=Snorkel R=Rappel H=Hoist SH=Short Haul ME=Medical Evacuation/ Extraction Exu=Exclusive Use

FAA N#	T Y	A#	MAKE/ MODEL	BASE	START	READY to FLY	REMARKS	FAA N#	T Y	A#	MAKE/ MODEL	BASE	START	READY to FLY	REMARKS
350MW	3	164	AS350 B3E	Pogo (3GE1)	0800	0830	P, B, Exu	471CH	1	83	CH-47D	Lake City	0800	0830	SN Exu
351FW	3	90	AS350 B2	Pogo (3GE1)	0800	0830	P, B Exu								

**10. Mission Request**

--

# INCIDENT RADIO COMMUNICATIONS PLAN (ICS 205)

<b>1. Incident Name:</b>			<b>2. Date/Time Prepared:</b>			<b>3. Operational Period: DAY SHIFT 0730-1930</b>					
WEST MIMS			Date: 06/09/2017 Time: 1622			Date/Time From: 06/10/2017 0730 SAT			Date/Time To: 06/10/2017 1930 SAT		
<b>4. Basic Radio Channel Use:</b>											
Zone Group	Ch #	Function	Channel Name/Trunked Radio System Talkgroup	Assignment	RX Freq	RX Tone/NAC	TX Freq	TX Tone/NAC	Mode (A,D, or M)	Remarks	
1 WEST	1	COMMAND	WEST OKEE REP		167.1250N	156.7	163.1500N	156.7	M	STEPHEN FOSTER STATE PARK	
1 WEST	2	COMMAND	S. FOSTER		159.1200N	NONE	151.3700N	100.0	A		
1 EAST	3	COMMAND	CORNELIA		159.1200N	NONE	151.3700N	82.5	A		
1 ALL DIVISIONS	4	AIR TO GROUND	A/G REQUEST	ALL DIVISIONS	169.2000N	NONE	169.2000N	NONE	A		
1	5	COMMAND	GFC EDDY	GA FORESTRY	159.4650N	NONE	151.1450N	123.0	A	GA FORESTRY ONLY	
1	6	TACTICAL	GFC TAC 1		159.3900N	NONE	159.3900N	156.7	A		
1	7	TACTICAL	V FIRE 26		154.3025N	NONE	154.3025N	156.7	A		
1	8	TACTICAL	OSCEOLA PROJECT		163.7125N	NONE	163.7125N	NONE	A		
1	9	TACTICAL	SE COMPACT		159.2850N	NONE	159.2850N	156.7	A		
1	10	TACTICAL	REFUGE TAC 1		168.3500N	NONE	168.3500N	NONE	A		
1	11	TACTICAL	REFUGE TAC 2		163.1000N	NONE	163.1000N	NONE	A		
1	12	TACTICAL	FFS 199		159.4425N	NONE	159.4425N	NONE	A		
1 WEST	13	TACTICAL	FFS 200		159.4125N	NONE	159.4125N	NONE	A		
1 ALL DIVISIONS	14	AIR TO GROUND	AIR TO GRD 66	A/G PRIMARY	166.6750N	NONE	166.6750N	NONE	A	AIR TO GROUND PRIMARY	
1 ALL DIVISIONS	15	AIR TO GROUND	AIR TO GRD 72	A/G SECONDARY	169.1500N	NONE	169.1500N	NONE	A	AIR / GROUND SECONDARY	
1 ALL DIVISIONS	16	AIR GUARD	AIR GUARD	ALL DIVISIONS	168.6250N	NONE	168.6250N	110.9	A	EMERGENCY AIRCRAFT COMMUNICATIONS	
<b>5. Special Instructions:</b>											
<b>6. Prepared By</b> (Communications Unit Leader)				Name: PAUL NOA, COML-T				Signature:			
ICS 205				IAP Page				Date/Time: 06/09/2017 1622			

# INCIDENT RADIO COMMUNICATIONS PLAN (ICS 205)

<b>1. Incident Name:</b>	<b>2. Date/Time Prepared:</b>	<b>3. Operational Period: DAY SHIFT 0730-1930</b>	
WEST MIMS	Date: 06/09/2017 Time: 1632	Date/Time From: 06/10/2017 0730 SAT	Date/Time To: 06/10/2017 1930 SAT

**4. Basic Radio Channel Use:**

Zone Group	Ch #	Function	Channel Name/Trunked Radio System Talkgroup	Assignment	RX Freq	RX Tone/NAC	TX Freq	TX Tone/NAC	Mode (A,D, or M)	Remarks
2	1	TACTICAL	V FIRE 21	DIV D	154.2800N	NONE	154.2800N		A	OSCEOLA NF
2 WEST	2	COMMAND	S. FOSTER	DIV D	159.1200N	NONE	151.3700N	100.0	A	
2 EAST	3	COMMAND	CORNELIA	DIV M/N/O	159.1200N	NONE	151.3700N	82.5	A	ROAD MAINT
2	5	COMMAND	GFC EDDY	GA FORESTRY	159.4650N	NONE	151.1450N	123.0	A	GA FORESTRY ONLY
2 EAST	6	COMMAND	GA BEND	UNASSIGNED	159.2700N	156.7	151.1000N	156.7	A	
2 NORTH	7	COMMAND	FARGO RPT	IA EAST	159.2700N	156.7	151.1000N	100.0	A	ROAD MAINT
2 SOUTH	8	COMMAND	BAKER RPT	DIV A/Y, DIV B/C, Z	159.2700N	156.7	151.1000N	123.0	A	IA EAST, ROAD MAINTENANCE
2	9	TACTICAL	COMPACT	DIV A/Y	159.2850N	NONE	159.2850N	156.7	A	
2	10	TACTICAL	REFUGE TAC 1	DIV Z	168.3500N	NONE	168.3500N	NONE	A	ROAD MAINT
2	11	TACTICAL	OSCEOLA PROJECT	DIV M/N/O, IA WEST	163.7125N	NONE	163.7125N	NONE	A	
2	12	TACTICAL	FFS 199	IA EAST	159.4425N	NONE	159.4425N	NONE	A	
2	13	TACTICAL	FFS 200	DIV B/C	159.4125N	NONE	159.4125N	NONE	A	
2 ALL DIVISIONS	14	AIR TO GROUND	AIR TO GRD 66	A/G PRIMARY	166.6750N	NONE	166.6750N	NONE	A	AIR / GROUND PRIMARY
2 ALL DIVISIONS	15	AIR TO GROUND	AIR TO GRD 72	A/G SECONDARY	169.1500N	NONE	169.1500N	NONE	A	AIR / GROUND SECONDARY
2 ALL DIVISIONS	16	AIR GUARD	AIR GUARD	ALL DIVISIONS	168.6250N	NONE	168.6250N	110.9	A	EMERGENCY AIRCRAFT COMMUNICATIONS

**5. Special Instructions:**

**WEST MIMS DAY PLAN**

<b>6. Prepared By</b> (Communications Unit Leader)	Name: PAUL NOA, COML-T	Signature:
<b>ICS 205</b>	<b>IAP Page</b>	Date/Time: 06/09/2017 1632

### **Telephone lines at ICP**

<b>Information/PIO</b>	912-637-5132
<b>Information</b>	912-637-5108
<b>Air Ops</b>	912-637-5133
<b>Ordering</b>	912-637-5107
<b>Ordering</b>	912-637-5136
<b>Ordering FAX</b>	912-637-5104
<b>Supply</b>	912-637-5138
<b>Ground Support</b>	912-637-5105
<b>Finance</b>	912-637-5109
<b>Finance FAX</b>	912-637-5110
<b>Operations</b>	912-637-5112
<b>Plans FAX</b>	912-637-5115
<b>Plans / Checkin</b>	912-637-5137
<b>Demob</b>	912-637-5113
<b>Communications</b>	912-637-5116


### **Telephone lines at Eastside Camp**

<b>Operations</b>	912-496-2278
<b>Operations FAX</b>	912-496-3115
<b>Supply</b>	912-496-3116
<b>Supply FAX</b>	912-496-3122
<b>Ground Support</b>	912-496-3407
<b>Logistics</b>	912-496-2293
<b>Medical</b>	912-496-2289

Last Update: 5/30/2017

## HEALTH AND SAFETY MESSAGE

*“We don’t plan on luck to be safe, we plan on sound risk management and good decisions” ....*

<b>INCIDENT:</b> West Mims Fire	<b>DATE:</b> June 10, 2017
<b>Major Hazards &amp; Risks:</b> Transitions, Thunderstorms, Driving	
<p><b>Transitions:</b> <i>Historically transitions are a time when communication break downs occur and situational awareness is lost. As new faces begin to appear, take the time to <b>engage in conversations</b> that will ensure everyone understands the mission, what success looks like, the hazards specific to your area, and mitigations that are in place. Before going out on the line take a few extra minutes to make sure everyone that needs to be able to communicate can communicate.</i></p> <p><b>Thunderstorms:</b> <i>In addition to lightning, thunderstorms can produce strong, gusty, and erratic winds along with locally heavy rainfall. If you are working in an area with standing trees be particularly <b>aware of the effect wind will have on widow makers, snags, and fire weakened trees.</b> When winds increase take shelter in areas free from aerial hazards! Heavy rain can cause road conditions to deteriorate rapidly. <b>Know where you are going to go</b> to avoid getting stuck or stranded by heavy rains!</i></p> <p><b>Driving:</b> <i>Before you get behind the wheel take the time to walk around your vehicle and identify any hazards that may cause you a problem. Once you get behind the wheel remember to ask yourself <b>STOP...Seatbelts on? Tools and equipment stowed? Operator and crew have situational awareness? Personnel accounted for?</b></i></p>	
<p><b><i>Not your job?</i></b></p>  <p><b><i>We’re all on the same team, lend a hand!</i></b></p>	<p>Fire Order of the Day:</p> <p><b><u><i>Be alert. Keep calm. Think clearly.</i></u></b> <b><u><i>Act decisively.</i></u></b></p> <ul style="list-style-type: none"><li>• <b><i>Are you ready to be an IWI-IC?</i></b></li><li>• <b><i>Have you reviewed the IWI-IC responsibilities on the 206?</i></b></li><li>• <b><i>If you fail to plan, then you plan to fail!</i></b></li></ul>

*Southern Area States IMT, Safety Officers: Larry & Larry*



## Human Resource Message

### YOUR RIGHTS AND RESPONSIBILITIES

#### **Rights:**

- To work in a harassment-free environment where people treat one another with dignity, equity, courtesy and respect.
- To say "no" to unwelcome advances or requests for favors.
- To file complaints or grievances through appropriate avenues.

#### **Responsibilities:**

- To behave in a manner that treats people with dignity, equity, courtesy and respect.
- To abide by agency and incident ethics and conduct regulations.
- To report any harassment or other inappropriate behavior you observe or experience

**Have a safe day!**

Incident Human  
Resource Specialist: Larry Sandoval  
Incident: West Mims Fire

# MEDICAL PLAN (ICS 206 WF)

1. Incident/Project Name			2. Operational Period					
West Mims Fire			Date/Time <b>6/10/17 0730 - 1930</b>					
3. Ambulance Services								
Name	Complete Address		Phone		Advanced Life Support (ALS) Yes No			
Clinch County EMS	1050 Valdosta Hwy Homerville Ga		229-569-9280		YES			
Golden Isle EMS	210 West Park Ave. Valdosta Ga		229-300-0619		YES			
Okefenokee EMS	611 Riverside Ave. Waycross Ga		912-288-5703		YES			
4. Air Ambulance Services								
Name	Phone		Type of Aircraft & Capability					
Air Methods	888-763-1010		AS 350 with night vision capabilities					
Air Evac	888-269-6006		206 L4 + with night vision capabilities					
Trauma 1	800-223-4878		Bell 407 & EC145 both with night vision capabilities					
5. Hospitals								
Name Complete Address	GPS Datum – WGS 84 Coordinate Standard Degrees Decimal Minutes DD° MM.MMM' N - Lat DD° MM.MMM' W - Long		Travel Time Air Gnd		Phone	Helipad Yes No		Level of Care Facility
	Lat:	Long:						
Memorial Satilla Health 1900 Teveau St. Waycross GA 31501	N 31' 13.452	W 82' 20.875	15 mins	45 mins	912-283-3030	<input checked="" type="checkbox"/>	<input type="checkbox"/>	Level III
Clinch Memorial 1050 Valdosta Hwy Homerville Ga 31634	N 31' 01.975	W 82' 45.850	20 mins	30 mins	912-487-5211	<input checked="" type="checkbox"/>	<input type="checkbox"/>	Level IV
Ed Frazier Hospital N. 3 <sup>rd</sup> Street MacClenny Fl 32036	N 30' 28.482	W 82' 11.896	15 mins	45 mins	904-259-3151	<input checked="" type="checkbox"/>	<input type="checkbox"/>	Level IV
Shands Jacksonville 655 West 8 <sup>th</sup> Street Jacksonville Fl 32209	N 30' 20.890	W 81' 39.862	45 mins	90 mins	904-224-0411	<input checked="" type="checkbox"/>	<input type="checkbox"/>	Level I Trauma Center
UF Shands Burn Center 1600 SW Archer Rd. Gainesville Fl 32610	N 29' 38.648	W 82' 21.189	45 mins	105 mins	352-265-8932	<input checked="" type="checkbox"/>	<input type="checkbox"/>	Burn Center
<b>IWI IC Responsibilities:</b>								
<ul style="list-style-type: none"> <li>-Take charge of the scene – inform the Division Supervisor and Communications that you are the IWI IC and establish radio communications</li> <li>-Assign or begin patient assessment (9 Line) and first aid.</li> <li>-Determine patient transportation through consultation with line medical personnel and Medical Unit Leader.</li> <li>-Order transportation resources through Communications as early as possible.</li> <li>-Notify Communications as resources arrive and any patient status changes.</li> <li>-Names of injured or deceased individuals will not be transmitted on the radio.</li> <li>-Initiate documentation for future investigation; if a line safety officer is available, assign them to lead documentation.</li> <li>-Conduct an After Action Review to determine successes, areas to improve and lessons learned</li> </ul>								



## MEDICAL PLAN (ICS 206 WF)

6. Division   Branch   Group	
Medical Station WEST	
MEDL Station – Gary Allen Ford - EMPF John Tomazin - EMPF	470-366-6313 – Command Channel 2 470-366-6303
Medical Station EAST	
MEDL Station – Kathy Nemmers- EMPF Wade Allen - EMPF	602-885-3115 – Command Channel 3 928-240-0106

7. Prepared by (Medical Unit Leader)	8. Date/Time	9. Reviewed By (Safety Officer)	10. Date/Time
West Medical Travis McGowen MEDL (T) 470-532-8809	6/9/17	Larry Grubbs SOF1 850-228-7755	6/9/17

## **WEST MIMS FIRE - RESTAURANT SERVICE**

**Last Update: Sunday, June 6, 2017**

**Breakfast \$11.00 Lunch \$12.00 Dinner \$23.00**

### **Valdosta:**

- Waffle House (S193) – 1819 W. Hill Dr., Valdosta, GA 31601 (229) 834-4907
- Cracker Barrel – 1195 St. Augustine Rd., Valdosta, GA (229) 244-5258

### **Fargo:**

- Suwannee River Outfitters (S117) - P.O. Box 94 Fargo, Ga 31631 Store# (912) 637-5114 Bonnie Griffis (Owner) Cell# (229)460-6465 (6 a.m. – 8 p.m. Mon.-Sat., 6 a.m.- 3 p.m. Sun)
- Suwannee River Café (S118) - 190 Day Ave Fargo, GA 31631 (912) 637-5307 Lorene Odom (Owner) (6 a.m. – 8 p.m. Mon.-Sat., closed Sun)

### **Lake City:**

- Waffle House (S940) – 3639 W. US Hwy. 90 Lake City, FL 32055 (385) 755-9066, Marilyn (Manager) (386) 344-2365
- Texas Roadhouse – 3039 W. Hwy. 90, (386) 758-0074. (Sun.-Thurs. 11:00 a.m.- 10:00 pm) (Fri.-Sat. 11:00 a.m.-11:00 pm)

### **Kingsland:**

- Waffle House (S951) – 1201 East Kind Avenue, (912) 729-5690 Allen Newcomb (Manager) (770) 330-4446
- Cracker Barrel – 1200 Boone Ave. (912) 576-1991 (Sun.-Thurs. 6:00 a.m. – 10:00 p.m.)(Fri. – Sat. 6:00 a.m. – 11:00 p.m.)

### **Waycross:**

- Huddle House (S977) - 1010 Memorial Drive Waycross, GA 31501 (912) 490-4353
- Hog-n-Bones – 1900 Memorial Drive, Waycross, GA 31501 (912) 285-3657 (Mon. –Sat. 6:00 a.m.-9:00 p.m.) Closed Sundays
- Cracker Barrel – 2521 Memorial Dr (912) 285-8615 (Sun.-Thurs. 6:00 a.m. – 10:00 p.m.)(Fri. – Sat. 6:00 a.m. – 11:00 p.m.)

### **Homerville:**

- Jerry J's (S716) – 89 E. Dame Avenue, Homerville, Ga 31634 (912) 487-2232 Richard Crosby (Owner) (912) 286-6720

### **Folkston:**

- Okefenokee Adventures (S593) – 4159 Suwannee Canal Rd., (912) 496-7156 (temporarily closed)

WEST MIMS DEMOB  
6/10/2017

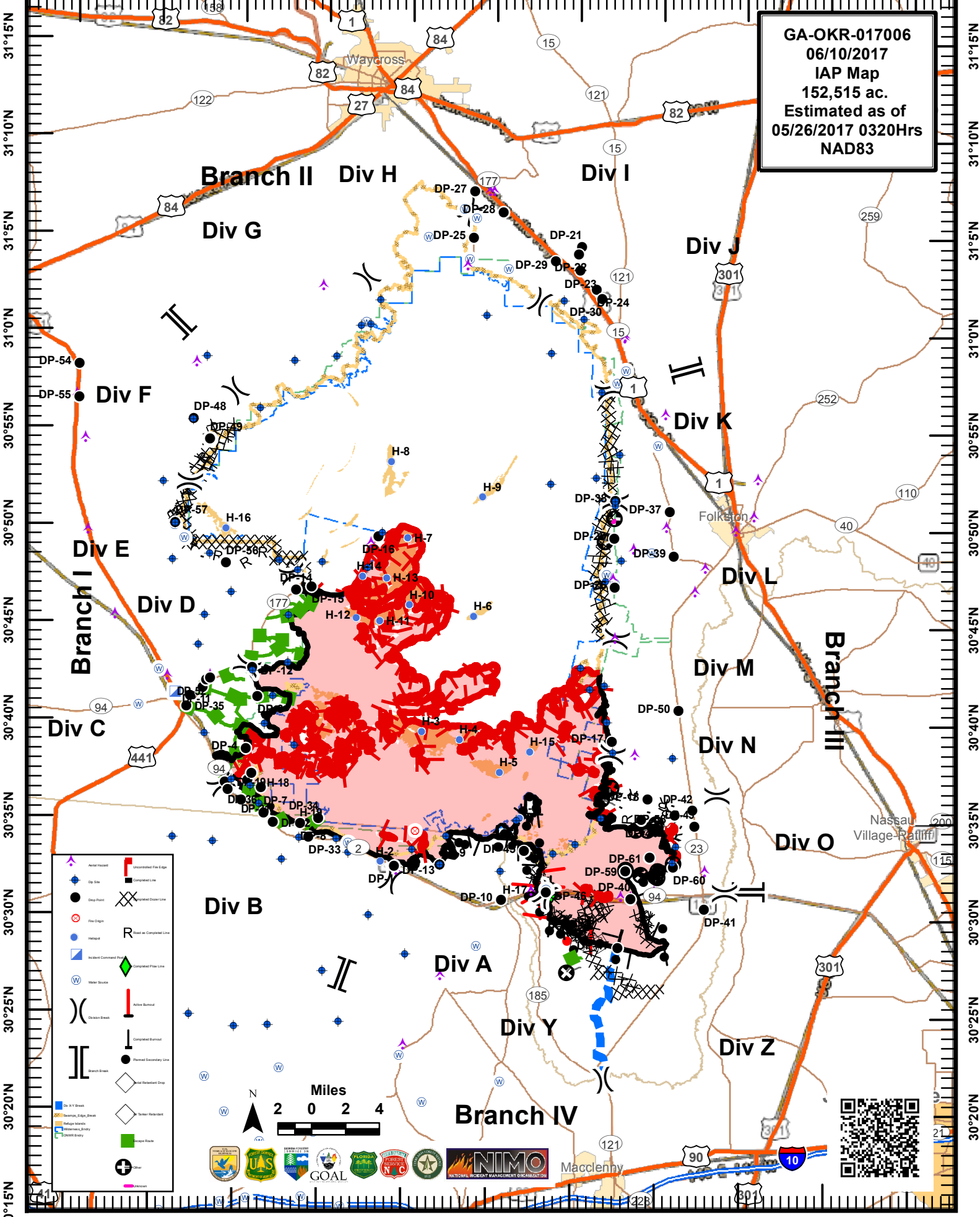
<u>Type</u>	<u>Request #</u>	<u>Name</u>	<u>DIV</u>	<u>Type</u>	<u>Request #</u>	<u>Name</u>
ENG6	E-1006	KY-KYS 601	Y	COMT	O-776	Fortenberry
ENG6	E-1009	GFC 4202239	Z			
ENG6	E-1010	GFC 4201296	Z	DIVS(t)	O-789	Ryan, Paul M/N/O
ENG6	E-1012	ACS 29283	M/N/O			
ENG6	E-1013	GFC 29693	Z			
ENG6	E-1014	ACS 31278	M/N/O			
				IMT T2	O-718	SOUTHERN AREA STATE IMT

WEST MIMS DEMOB  
6/11/2017

<u>Type</u>	<u>Request #</u>	<u>Name</u>	<u>DIV</u>	<u>Type</u>	<u>Request #</u>	<u>Name</u>
TPL3	E-687	GFC 3186	IA West	TFLD	O-792	Roach, Tom D
TPL2	E-688	GFC 3230	IA West	STEQ	O-799	Campbell, Steven IA West
TPL3	E-689	GFC 1536	IA West	TFLD	O-793	Sawyer, Brent Roads
GRD	E-295	Road Grader		DIVS	O-798	Wilson, Jeromy Roads
PU	E-1002	GFC 4202612		OSC2(t)	O-812	Joiner, Blair Plan Ops
					O-870	Dugan
				RADO	O-848	Swantic
				SECM	O-706	Blanks
				EQPM	O-714	Tootle
				RADO	O-728	Johnson
				SEC2	O-741	Simms
				GISS	O-765	Smith

82°40'W 82°35'W 82°30'W 82°25'W 82°20'W 82°15'W 82°10'W 82°5'W 82°0'W 81°55'W 81°50'W

GA-OKR-017006  
06/10/2017  
IAP Map  
152,515 ac.  
Estimated as of  
05/26/2017 0320Hrs  
NAD83



- Aerial Hazard
- Drop Point
- Fire Origin
- Wellpoint
- Included Command Post
- Water Source
- Division Break
- Branch Break
- On Air Break
- Resource Edge/Block
- Hedge Resource
- Watermain/Line
- 120kV Story
- Unexplained Fire Edge
- Completed Line
- Unexplained Clear Line
- Road as Completed Line
- Completed Prior Line
- Active Burnout
- Completed Burnout
- Planned Secondary Line
- Line Reinforced Check
- Order Reinforced
- Scrape Road
- Other
- Unknown



82°40'W 82°35'W 82°30'W 82°25'W 82°20'W 82°15'W 82°10'W 82°5'W 82°0'W 81°55'W 81°50'W





This Page Intentionally left blank.

# MEDICAL PLAN (ICS 206 WF) (aka 9 Line)

## Medical Incident Report

**FOR ALL MEDICAL EMERGENCIES: IDENTIFY ON SCENE INCIDENT COMMANDER BY NAME AND POSITION AND ANNOUNCE "MEDICAL EMERGENCY" TO INITIATE RESPONSE FROM IMT COMMUNICATIONS/DISPATCH.**

**Use items one through nine to communicate situation to communications/dispatch.**

**1. CONTACT COMMUNICATIONS/DISPATCH**

*Ex: "Communications, Div. Alpha. Stand-by for Priority Medical Incident Report." (If life threatening request designated frequency be cleared for emergency traffic.)*

**2. INCIDENT STATUS:** Provide incident summary and command structure.

<b>Nature of Injury/Illness</b>		<i>Describe the injury (Ex: Broken leg with bleeding)</i>
Incident Name		<i>Geographic Name + "Medical" (Ex: Trout Meadow Medical)</i>
Incident Commander		<i>Name of IC</i>
Patient Care		<i>Name of Care Provider (Ex: EMT Smith)</i>

**3. INITIAL PATIENT ASSESSMENT:** Complete this section for each patient. This is only a brief, initial assessment. Provide additional patient info after completing this 9 Line Report.

Number of Patients:	Male / Female	Age:	Weight:
Conscious? <input type="checkbox"/> YES <input type="checkbox"/> <b>NO = MEDEVAC!</b>			
Breathing? <input type="checkbox"/> YES <input type="checkbox"/> <b>NO = MEDEVAC!</b>			
Mechanism of Injury: <i>What caused the injury?</i>			
Lat/Long (Datum WGS84) <i>Ex: N 40° 42.45' x W 123° 03.24'</i>			

**4. SEVERITY OF EMERGENCY, TRANSPORT PRIORITY**

SEVERITY	TRANSPORT PRIORITY
<input type="checkbox"/> <b>URGENT-RED Life threatening injury or illness.</b> <i>Ex: Unconscious, difficulty breathing, bleeding severely, 2° – 3° burns more than 4 palm sizes, heat stroke, disoriented.</i>	Ambulance or MEDEVAC helicopter. Evacuation need is <b>IMMEDIATE.</b>
<input type="checkbox"/> <b>PRIORITY-YELLOW Serious Injury or illness.</b> <i>Ex: Significant trauma, not able to walk, 2° – 3° burns not more than 1-2 palm sizes.</i>	Ambulance or consider air transport if at remote location. Evacuation may be <b>DELAYED.</b>
<input type="checkbox"/> <b>ROUTINE-GREEN</b> Not a life threatening injury or illness. <i>Ex: Sprains, strains, minor heat-related illness.</i>	Non-Emergency. Evacuation considered <b>Routine of Convenience.</b>

**5. TRANSPORT PLAN:**

**Air Transport:** (Agency Aircraft Preferred)

<input type="checkbox"/> Helispot	<input type="checkbox"/> Short-haul/Hoist	<input type="checkbox"/> Life Flight	<input type="checkbox"/> Other
-----------------------------------	---	--------------------------------------	--------------------------------

**Ground Transport:**

<input type="checkbox"/> Self-Extract	<input type="checkbox"/> Carry-Out	<input type="checkbox"/> Ambulance	<input type="checkbox"/> Other
---------------------------------------	------------------------------------	------------------------------------	--------------------------------

**6. ADDITIONAL RESOURCE/EQUIPMENT NEEDS:**

<input type="checkbox"/> Paramedic/EMT(s)	<input type="checkbox"/> Crew(s)	<input type="checkbox"/> SKED/Backboard/C-Collar
<input type="checkbox"/> Burn Sheet(s)	<input type="checkbox"/> Oxygen	<input type="checkbox"/> Trauma Bag
<input type="checkbox"/> Medication(s)	<input type="checkbox"/> IV/Fluid(s)	<input type="checkbox"/> Cardiac Monitor/AED
<input type="checkbox"/> Other (i.e. splints, rope rescue, wheeled litter)		

**7. COMMUNICATIONS:**

Function	Channel Name/Number	Receive (Rx)	Tone/NAC *	Transmit (Tx)	Tone/NAC *
<i>Ex: Command</i>	<i>Forest Rpt, Ch. 2</i>	<i>168.3250</i>	<i>110.9</i>	<i>171.4325</i>	<i>110.9</i>
COMMAND					
AIR-TO-GRND					
TACTICAL					

\*(NAC for digital radio system)

**8. EVACUATION LOCATION:**

Lat/Long (Datum WGS84) <i>EX: N 40 42.45' x W 123 03.24'</i>	
Patient's ETA to Evacuation Location:	
Helispot/Extraction Size and Hazards:	

**9. CONTINGENCY:**

**Considerations:** If primary options fail, what actions can be implemented in conjunction with primary evacuation method? Be thinking ahead...

**REMEMBER:** Confirm ETA's of resources ordered  
Act according to your level of training  
Be Alert. Keep Calm. Think Clearly. Act Decisively.