

# INCIDENT ACTION PLAN

## WEST MIMS FIRE

### OPERATIONAL PERIOD

#### JUNE 4, 2017

#### 0730-1930

## SOUTHERN STATES TYPE-1 IMT

QR for IAP



GA-OKR-017006

FWS FFF2000000KYJ70

USFS PRKYJ717\_1502 (P)

NPS PFFSKJ7017.00.1

QR for Maps



#### Schedule

0730 Pre-Op Briefing  
0800 Morning Briefing  
1100 C & G  
1600 Pre Planning Meeting  
1700 Planning Meeting



## INCIDENT OBJECTIVES (ICS 202)

<b>1. Incident Name:</b>	<b>2. Operational Period: DAY SHIFT 0730-1930</b>	
WEST MIMS	Date/Time From: 06/04/2017 0730      SUN	Date/Time To: 06/04/2017 1930      SUN
<b>3. Objective(s):</b>		
<ul style="list-style-type: none"> <li>• Provide for the safety and security of incident personnel and public in all incident operations through sound risk assessment and hazard mitigations.</li> <li>• Confine all new fires (new starts or breakouts) within the Okefenokee National Wildlife Refuge and/or inside the swamp edge break. Fight fire aggressively and suppress all fire outside the swamp edge boundary, preventing fires from outside the break from entering the refuge while minimizing damage to private timberlands and improvements.</li> <li>• Maintain a positive working relationship with all adjacent landowners, cooperators and State and Federal partners. Inform, involve and communicate incident planning and operations with all including the Refuge Resource Advisors.</li> <li>• Protect all cultural and archeological sites and structures within the refuge.</li> <li>• Manage the fires cost-effectively, consistent with the values at risk.</li> <li>• Implement structure protection as necessary for at-risk facilities and communities.</li> <li>• Conduct all operations in a harassment-free environment.</li> <li>• Identify and initiate suppression repair on all Divisions.</li> </ul>		
<b>4. Operational Period Command Emphasis:</b>		
Branch IV Keep fire East of the North Prong of St Mary's River; West of Nassau county Florida; and North of Baker county Florida Branch III Keep fire North of Rayonier Road 10, West of St Mary's River, and South of Stokes Road Keep fire within the Okefenokee Refuge Swamp Edge Break Boundary. Respond to initial attack fires on new starts within: *South of Suwannee Canal *Within the Okefenokee jurisdictional boundaries *Within state properties inside Perimeter Road		
<b>General Situational Awareness:</b>		
Utilize confine, contain, and point source protection strategies and tactics that commit operations personnel only where and when they can be successful, under conditions where important values at risk are protected with the least exposure.		
<b>5. Site Safety Plan Required?</b> Yes <input type="checkbox"/> No <input checked="" type="checkbox"/>		
<b>Approved Site Safety Plan(s) Located at:</b>		
<b>6. Incident Action Plan</b> (the items checked below are included in this Incident Action Plan):		
<input checked="" type="checkbox"/> ICS 202 <input checked="" type="checkbox"/> ICS 203 <input checked="" type="checkbox"/> ICS 204 <input checked="" type="checkbox"/> ICS 205 <input type="checkbox"/> ICS 205A <input checked="" type="checkbox"/> ICS 206	<input type="checkbox"/> ICS 207 <input type="checkbox"/> ICS 208 <input checked="" type="checkbox"/> ICS 220 <input checked="" type="checkbox"/> Map/Chart <input checked="" type="checkbox"/> Weather Forecast/Tides/Currents	Other Attachments: <input checked="" type="checkbox"/> <u>PIO MESSAGE</u> <input checked="" type="checkbox"/> <u>TENTATIVE DEMOB</u> <input checked="" type="checkbox"/> <u>SAFETY MESSAGE</u> <input checked="" type="checkbox"/> <u>RESTAURANT LIST</u>
<b>7. Prepared by:</b> JOE BISHOP	<b>Position/Title:</b> PSC2 (T)	<b>Signature:</b>
<b>8. Approved by Incident Commander:</b>		<b>Signature:</b>
Name:      KEITH MOUSEL		
<b>ICS 202</b>	<b>IAP Page</b>	<b>Date/Time:</b> 06/03/2017 1900

## ORGANIZATION ASSIGNMENT LIST (ICS 203)

<b>1. Incident Name:</b>		<b>2. Operational Period:</b> DAY SHIFT 0730-1930	
WEST MIMS		Date/Time From: 06/04/2017 0730	SUN
		Date/Time To: 06/04/2017 1930	SUN
<b>3. Incident Commander(s) and Command Staff:</b>			
IC/UC	SAM LENEAVE; KEITH MOUSEL (T); MIKE QUESINBERRY	GIS SPECIALIST	JORDAN SMITH; STEVE PENNY BRENDAN MULHOLLAND (T)
SAFETY OFFICER	LARRY GRUBBS; LARRY CONNELL LUCAS MINTON (T)	ITSS	DEAN GROE; RANDALL FOUNTAIN TIM STILTNER (T)
INFORMATION OFFICER	ANNALEASA WINTER TODD SCHROEDER; JUDITH DOWNING	TRAINING SPECIALIST	DAVID HUNT
LIAISON OFFICER	ALAN DOZIER DANIEL STANLEY	HUMAN RESOURCE SPECIALIST	LARRY SANDOVAL
TECHNICAL SPECIALIST	GENE MADDEN	INCIDENT METEOROLOGIST	SCOTT KENNEDY
		FIRE BEHAVIOR ANALYST	BART HOAG ANDREW TAYLOR (T); MIKE WARD (T)
		AIR RESOURCE ADVISOR	SEAN LUCHS
<b>4. Agency/Organization Representative(s):</b>			
<b>Agency/Organization</b>	<b>Name</b>	<b>6. Logistics Section:</b>	
GFC PROTECTION	FRANK SORRELLS	CHIEF	EAST - JIM PETERS WEST-DAVID MCVAY (T) STEVE WEHERLY (T) SALLY BROWNING
OKE REF MGR/ASSIST	MICHAEL LUSK; SARA CLARDY	FACILITIES UNIT	WEST-DENNIS EVANS EAST-STEPHEN TANNER
OKE REF FMO	REESE KERBOW	GROUND SUPPORT UNIT	WEST-GLENN SIMMONS EAST-DOUGLAS CROCKER
GOAL	JIM BARRETT	SUPPLY UNIT	WEST- THOMAS NAPOLITANO EAST-TRAVIS SHIDAL
FL FFS	JOHN RAULERSON	RCDM	LAUREN SMITH
GEMA	KRISTEN HIGGS; DIANE ADAMS	ORDM	MARK MCCLELLAN
NORFOLK SOUTHERN	CHAD EDWARDS	MEDICAL UNIT	STEPHEN RUSSO; WEST-TRAVIS MCGOWEN EAST-BRAD BURNS
CLINCH CO EMA	WILL JOYCE; RANDY PATTEN	FOOD UNIT	WEST-STEPHEN MARSHALL EAST-BRANTLEY SMITH (T)
CHARLTON CO EMA	BRUCE YOUNG	SECURITY UNIT	GREG BLANKS
WARE CO EMA	BILLY PARHAM	COMMUNICATIONS UNIT	CHUCK RADCLIFF PAUL NOA (T)
NASSAU COUNTY	BILLY E STEP	BCMG	CHAD PRITCHETT
BAKER CO SO	BECK PARKER		
COLUMBIA COUNTY	SHAYNE MORGAN		
OSCEOLA NF	IVAN GREEN		
BAER COORDINATOR	SUE WILDER		
<b>5. Planning Section:</b>			
CHIEF	DUANE DURGEE JOE BISHOP (T); DARREL SCHWILLING		
RESOURCES UNIT	SHAUN STEWART FRED NOACK; PEECH KELLER		
DEMOBILIZATION UNIT	BOBBY CAHAL MEREDITH BUTCHER (T)		
STATUS CHECKIN	JOSEPH ROBLES STACEY CLEMENSON		
DOCUMENTATION UNIT	TERI PARVIN		
SITUATION UNIT	SCOTT CROSBY STUART COOMBS		
<b>9. Prepared By:</b> Name: SHAUN STEWART Position/Title: RESL Signature:			
ICS 203	IAP Page	Date/Time: 06/03/2017 1800	





**To: All Incident Personnel, West Mims Fire 2017**

As the Unified Command Incident Commanders, we have a policy of “zero tolerance” of inappropriate behavior during incident operations. Any form of harassment, discriminatory practices, or disrespectful behavior will not be tolerated. Known or reported acts will be dealt with appropriately.

We are particularly concerned about the perception that alcohol has a place in any of the Incident facilities. It is not appropriate to indulge in alcoholic beverages during any fire assignment.

The National Team from the Southern Region has a policy of “NO ALCOHOL” from the time of dispatch until the time of physical release from the Incident. Members of the Team voluntarily comply with this policy; all incident personnel will be expected to do so also.

We endorse, support, and expect an attitude of mutual respect for all Incident personnel and the public we serve. We also, endorse the attitude and work ethic that places “Safety First, every time on every Incident.” We expect nothing less.

/s/ Keith Mousel /s/ Mike Quesinberry Incident Commanders
---



# Fire Weather Forecast



**FORECAST NO: 58**  
**PREDICTION FOR: Sunday**  
**SHIFT DATE: June 4, 2017**  
**FORECAST ISSUED: 1700 June 3, 2017**

**NAME OF FIRE: West Mims Fire**  
**UNIT: Okefenokee National Wildlife Refuge**  
**Incident Meteorologist: Scott Kennedy 252-269-9497**  
**Incident Meteorologist (T): Sean Lucks 240-499-6654**

## DISCUSSION:

Another warm day with scattered showers and thunderstorms expected to develop during the afternoon. Any showers or storms that develop will dissipate into the evening as the sun sets. High temperatures around 90 are expected with minimum RH values in the mid to upper 40s. Winds will be light and variable through the morning then predominantly southeast 4-8 mph during the afternoon outside of thunderstorm outflow. Patchy fog is possible on the drive in to the morning briefing, especially across areas that received rainfall.

## SUNDAY:

- WEATHER: Mostly cloudy with scattered shower and thunderstorms developing in the afternoon.
- WIND (20 FT): Light and variable early, becoming southeast 4-8 mph in the afternoon.
- MAX TEMPERATURES: 87-92    MAX HEAT INDEX: 94-98    MIN RH: 45-50%
- LAL: 3    CHANCE RAIN: 40%    DISPERSION (MAX): 30
- MIXING HEIGHT: 5000    RAINFALL: <0.10"-0.33"    TRANSPORT WINDS: SE 10 mph  
*Localized higher amounts*

## SUNDAY NIGHT:

- WEATHER: A chance of a showers and thunderstorms in the evening, becoming partly cloudy. Patchy fog late.
- WIND (20 FT): Light and variable, less than 3 mph.
- MIN TEMPERATURES: 67 to 72    MAX RH: 95-100%    MAX LVORI: 10
- LAL: 2    CHANCE OF RAIN: 20%    RAINFALL: <0.10"

## HOURLY WEATHER FORECAST (LST) Sunday 1000 through Monday 0800

Time	1000	1200	1400	1600	1800	2000	2200	2400	0200	0400	0600	0800
Temp °F	81	87	91	87	84	78	74	72	70	69	68	71
RH %	72	60	47	55	65	76	90	97	100	100	100	99
Wind Dir	E	ESE	SE	SE	SE	SE	S	Vrb	Vrb	Vrb	Vrb	Vrb
Wind Spd mph	3	5	5	7	7	5	4	3	2	2	2	1
Wind Gst mph	-	-	-	-	-	-	-	-	-	-	-	-
Rain Chance%	10	15	30	40	40	30	20	10	10	10	10	10
Weather	-	-	Shwr	Tstm	Tstm	Tstm	-	-	-	Fog	Fog	-

## MONDAY:

- WEATHER: Mostly cloudy with scattered shower and thunderstorms developing in the afternoon.
- WIND (20 FT): Light and variable early, becoming southwest 5-10 mph in the afternoon.
- MAX TEMPERATURES: 88-93    MAX HEAT INDEX: 95-100    MIN RH: 45-50%
- LAL: 3    CHANCE RAIN: 50%    DISPERSION (MAX): 40
- MIXING HEIGHT: 5500    RAINFALL: <0.10"-0.33"    TRANSPORT WINDS: S 10-15 mph  
*Localized higher amounts*

**Sunrise Sunday: 6:27 am**

**Sunset Sunday: 8:30 pm**

**Sunrise Monday: 6:27 am**

**Thunderstorms imply gusty and erratic winds, locally heavy rain and lightning**

## RAWS Observations:

Jones  
Island



Eddy  
Tower



OKE  
East



OKE  
NW



**FIRE BEHAVIOR FORECAST**

<b>FORECAST NUMBER: #48</b>	<b>TYPE OF FIRE: Wildland</b>
<b>FIRE NAME: West Mims</b>	<b>OPERATIONAL PERIOD: 06/04/2017 Day Operational Period</b>
<b>DATE ISSUED: 06/03/2017</b>	<b>TIME ISSUED: 1700</b>
<b>UNIT: Okefenokee National Wildlife Refuge</b>	<b>Prepared By: Mike Ward FBAN (t) Signed By: Bart Hoag FBAN</b>

**FUEL ASSUMPTIONS:** Fuel types include mixed grass, brush and timber types. The high risk fuel type is the young pine plantations with grass/palmetto/gallberry brush understory.

Current fuel dryness is above normal. Current fuel conditions are favorable for active fire behavior within all fuel types. Active crown fire in brush and pine canopy is possible when critical fire weather is present.

**Expect all fuels to burn readily, including those that appear green.**

KBDI: 556 (down 70 from yesterday), ERC-G: 30 (65th percentile). Fuel Moistures: 1hr= 8% 10hr= 10% 100 hr= 17%  
Measured Live Woody Fuels Moisture (Gallberry): 116%, Live Herbaceous Fuel Moisture(Blue Stem): 129%

**WEATHER SUMMARY:** Mostly cloudy with showers and thunderstorms developing in the afternoon.

WIND (20 FT): Light variable early becoming SE 4-8 mph in afternoon.  
 MAX TEMPERATURES: 87-92                      MIN RH: 45-50%  
 LAL: 3    CHANCE OF RAIN: 40%              MAX DISPERSION: 30  
 MIXING HEIGHT: 5000                          TRANSPORT WINDS: SE 10 mph

**Fire Environment Conditions Present For Large Fire Growth on May 5, 2017: fire run that threatened St. George.**

Fuel dryness and fire weather combined to produce significant fire growth of 18,000 acres with an initial run that was 9 miles in length. Growth initiated in swamp brush fuels east of Soldier Camp Island and burned out of the refuge into pine plantation fuels.

Fuel Moistures: 1hr FM= 5% 10 hr. FM= 7% 100 hr. FM= 14% Live Woody= 101% Herbaceous= 119%  
 Indices: KBDI=720 (97<sup>th</sup> percentile) ERC G=37 (85<sup>th</sup> percentile) BI G=49 (97<sup>th</sup> percentile)  
 Weather Conditions: Max Temp=77 Min RH=27% Winds= 12 sustained with gusts to 20  
 Fire Behavior: ROS= >80 ch/hr. (1mile) Active crown fire Max spotting distance=1 mile

**Specific: All Branches:** Surface fuels will remain dry and available to burn. Piles and organic soil fuels continue to smolder, creep and initiate re-burn of needle cast and leaf litter. Thunderstorms will influence surface fire behavior, particularly in young pine plantations, increasing the potential for torching and possible short crown runs spotting up to .10 miles.

Fuel Type	Rates of Spread	Flame Length	Max Spot Distance	Probability of Ignition	Torching / Crowning Potential / Flame Lengths
Southern Rough(pine w/palmetto/gallberry)	7-13 ch/hr.	3-5 feet	500 feet	50%	Limited Torching possible in young pine regeneration.
Timber Litter (pine litter reburn)	1-2 ch/hr.	1 feet	50 feet	50%	No Torching
Grass/Shrub (Young Plantations/Swamp GS3)	8-14 ch/hr.	4-6 feet	500 feet	50%	Limited Torching possible in pine regeneration.

**AIR OPERATIONS:** Continued chances of afternoon and evening thunderstorms bringing lightning and gusty and erratic winds to the fire area.

**FIRE BEHAVIOR SAFETY:**

As ground fuels continue to burn out be cognizant of where you walk to avoid burns and other injuries. Continued burning in tree roots will increase potential hazards associated with them falling.

Reference: 1 chain = 66 feet, 20 chains = .25 mile, 40 chains = .50 mile, 60 chains = .75 mile, 80 chains = 1 Mile

# IA Protocol

- Determine LAT/LONG.
- Notify OSC and/or OPBD.
- OSC/OPBD will notify Unified IC's for approval to assist with ground or aviation resources.

## In Georgia:

Southern Response Dispatch (229) 386-3846

**If no contact**-Buck Kline (912) 678-2694

## In Florida-

Lake City (Baker, Columbia, and Hamilton Counties):  
(386) 243-6243

Jacksonville (Nassau County): (904) 266-8351

**If no contact**-Rick Dolan (352) 353-5101

Osceola National Forest- Any starts south of Florida State Highway 2 under USFS jurisdiction are the responsibility of the Osceola NF. Contact Tallahassee Dispatch at 850-523-8600 or Forest Duty Officer Drew Page at 850-523-8600. Tractor plow units should not engage (unless life or property is threatened) before contact with Osceola NF (Chris Lydick at 850-264-3209 or Scott Hussey at 352-215-5722).

## For OKR-

Brantley Boatright Dispatch (912) 496-7366 x 230  
or (912) 276-0023



## Division/Group Assignment List (ICS 204 WF)

<b>1. Incident Name:</b>			<b>3.</b>			
WEST MIMS			<b>I</b>		<b>B/C</b>	
<b>2. Operational Period:</b> DAY SHIFT 0730-1930						
Date/Time From: 06/04/2017 0730      SUN		Date/Time To: 06/04/2017 1930      SUN				
<b>4. Operations Personnel</b>						
<b>PLANNING OPERATIONS CHIEF</b>		TRENT INGRAM BLAIR JOINER (T)		<b>OPERATIONS CHIEF</b>		
				RICK DOLAN BUCK KLINE		
<b>BRANCH DIRECTOR</b>		LAURA WARD - 6/14 DAVID SMITH (T) - 6/11		<b>DIVISION/GROUP SUPERVISOR</b>		
				CHRIS ROBERTS - 6/11		
<b>SAFETY</b>		LARRY GRUBBS ROB THORP (T); LUCAS MINTON (T)		<b>AIR TACTICAL GROUP SUPERVISOR</b>		
				MARK NUNEZ KEN MCLAUGHLIN		
<b>5. Resources Assigned this Period</b>						
Strike Team / Task Force / Resource Designator		LWD	Leader	Number Persons	Drop Off PT./Time	Pick Up PT./Time
TFLD O-788		06/11	NATHAN ALLEN	1	ICP/0730	ICP/1930
ENG6 AL-ALF SHOAL CREEK 651 E-78		06/06	SCOTT LAYFIELD	3	ICP/0730	ICP/1930
ENG6 GFC4201757 E-1018		06/11	ROCK HOLT	2	ICP/0730	ICP/1930
ENG6 NC-NCF E-691 E-255		06/11	HARVEY HOWARD JR	3	ICP/0730	ICP/1930
WTS1 WILDLANDS FIRE SER E-132		07/01	CARSON SWEENEY	1	ICP/0730	ICP/1930
WTS2 STRICKLANDS - E-265		07/01	LUCIOUS CORBITT	1	ICP/0730	ICP/1930
READ O-803		06/13	MICHAEL CRAWFORD	1	ICP/0730	ICP/1930
DINS O-866		06/16	CATHY BLACK	1	ICP/0730	ICP/1930
DINS O-867		06/16	BERT EARLEY	1	ICP/0730	ICP/1930
FOBS O-694		06/08	JASON KAMMANN	1	ICP/0730	ICP/1930
FOBS O-828		06/15	RANDY SMITH	1	ICP/0730	ICP/1930
EMPF BRAVO O-754		06/09	KOBY SAUREY	1	ICP/0730	ICP/1930
EMPF CHARLIE E-352.2		06/06	COLIN STENHOUSE	1	ICP/0730	ICP/1930
SOF2 O-492		06/10	TIM OLIVERIUS	1	ICP/0730	ICP/1930
<b>8. Division/Group Communication Summary</b>						
Function	Channel	RX Frequency N/W	RX Tone/NAC	TX Frequency N/W	TX Tone/NAC	Mode
AIR TO GROUND	ZONE 2 / CH4	169.2000N	NONE	169.2000N	NONE	A
COMMAND	ZONE 2 / CH8	159.2700N	156.7	151.1000N	123.0	A
TACTICAL	ZONE 2 / CH 13	159.4125N	NONE	159.4125N	NONE	A
AIR TO GROUND	ZONE 2 / CH14	166.6750N	NONE	166.6750N	NONE	A
AIR TO GROUND	ZONE 2 / CH15	169.1500N	NONE	169.1500N	NONE	A
AIR GUARD	ZONE 2 / CH16	168.6250N	NONE	168.6250N	110.9	A
<b>9. Prepared By (Resource Unit Leader)</b>			<b>Approved By (Planning Section Chief)</b>		<b>Date</b>	<b>Time</b>
SHAUN STEWART, RESL			JOE BISHOP, PSC2 (T)		06/03/2017	1800

## Division/Group Assignment List (ICS 204 WF)

<b>1. Incident Name:</b>			<b>3.</b>			
WEST MIMS			<b>Branch:</b>		<b>Division/Group:</b>	
<b>2. Operational Period:</b> DAY SHIFT 0730-1930			<b>I</b>		<b>B/C</b>	
Date/Time From: 06/04/2017 0730      SUN		Date/Time To: 06/04/2017 1930      SUN				
<b>4. Operations Personnel</b>						
<b>PLANNING OPERATIONS CHIEF</b>		TRENT INGRAM BLAIR JOINER (T)		<b>OPERATIONS CHIEF</b>		RICK DOLAN BUCK KLINE
<b>BRANCH DIRECTOR</b>		LAURA WARD - 6/14 DAVID SMITH (T) - 6/11		<b>DIVISION/GROUP SUPERVISOR</b>		CHRIS ROBERTS - 6/11
<b>SAFETY</b>		LARRY GRUBBS ROB THORP (T); LUCAS MINTON (T)		<b>AIR TACTICAL GROUP SUPERVISOR</b>		MARK NUNEZ KEN MCLAUGHLIN
<b>6. Control Operations/Work Assignments:</b>						
<b>Task</b>						
<ul style="list-style-type: none"> <li>• Patrol and mop up fuels appropriate to fuel type and anticipated weather and fire behavior.</li> <li>• Respond to any new starts within the division.</li> <li>• Create or improve fireline around logging debris in coordination with logging operators.</li> </ul>						
<b>Purpose</b>						
<ul style="list-style-type: none"> <li>• Keep fire east of swamp edge fire break.</li> <li>• Keep fire north of GA 94/ FL 2</li> </ul>						
<b>End State</b>						
<ul style="list-style-type: none"> <li>• Fire is contained by adequate control line to reduce threat to escape; minimizing damage to private timberlands, private lands, and other resource values at risk.</li> </ul>						
<b>7. Special Instructions:</b>						
<p>Ensure LCES is in place before operations begin and stay hydrated. Drive defensively and with lights on at all times. Identify escape routes. Logging operations are continuing. Stay clear of cutting areas. Please be mindful of logging operations that will be ongoing. Ensure that all personnel stay clear of felling operations. Pay attention for potential reburn in logging area. Work with Gilyard Logging foreman on any suppression actions within the logging area.</p> <p>Use caution when working around logging operations.</p> <p><b><u>For IA protocol see page 7</u></b></p>						
<b>Additional Resources:</b>						
Superior Pine Tractor Plow D6; SP-83, SP-85, SP-87						
Medical Emergency Channel: Command						
ETA for Ambulance to Scene:						
Air: 20 – 30 mins						
Ground: 10 - 15 mins Paved roads only.						
IWI – IC or approved person will use Channel 16 (Air Guard) for contact with air ambulance						
Air Ambulance landing zone to be determined by IWI – IC						
Utilize engines to provide dust abatement, as needed, prior to air ambulance landing						
<b>8. Division/Group Communication Summary</b>						
Function	Channel	RX Frequency N/W	RX Tone/NAC	TX Frequency N/W	TX Tone/NAC	Mode
AIR TO GROUND	ZONE 2 / CH4	169.2000N	NONE	169.2000N	NONE	A
COMMAND	ZONE 2 / CH8	159.2700N	156.7	151.1000N	123.0	A
TACTICAL	ZONE 2 / CH 13	159.4125N	NONE	159.4125N	NONE	A
AIR TO GROUND	ZONE 2 / CH14	166.6750N	NONE	166.6750N	NONE	A
AIR TO GROUND	ZONE 2 / CH15	169.1500N	NONE	169.1500N	NONE	A
AIR GUARD	ZONE 2 / CH16	168.6250N	NONE	168.6250N	110.9	A
<b>9. Prepared By (Resource Unit Leader)</b>			<b>Approved By (Planning Section Chief)</b>		<b>Date</b>	<b>Time</b>
SHAUN STEWART, RESL			JOE BISHOP, PSC2 (T)		06/03/2017	1800

## Division/Group Assignment List (ICS 204 WF)

<b>1. Incident Name:</b>			<b>3.</b>			
WEST MIMS			<b>Branch:</b>		<b>Division/Group:</b>	
<b>2. Operational Period:</b> DAY SHIFT 0730-1930			<b>I</b>		<b>D</b>	
Date/Time From: 06/04/2017 0730      SUN		Date/Time To: 06/04/2017 1930      SUN				
<b>4. Operations Personnel</b>						
<b>PLANNING OPERATIONS CHIEF</b>		TRENT INGRAM BLAIR JOINER (T)		<b>OPERATIONS CHIEF</b>		RICK DOLAN BUCK KLINE
<b>BRANCH DIRECTOR</b>		LAURA WARD - 6/14 DAVID SMITH (T) - 6/11		<b>DIVISION/GROUP SUPERVISOR</b>		WALTER BOWERS - 6/11
<b>SAFETY</b>		LARRY GRUBBS ROB THORP (T); LUCAS MINTON (T)		<b>AIR TACTICAL GROUP SUPERVISOR</b>		MARK NUNEZ, KEN MCLAUGHLIN
<b>5. Resources Assigned this Period</b>						
Strike Team / Task Force / Resource Designator		LWD	Leader	Number Persons	Drop Off PT./Time	Pick Up PT./Time
TFLD O-792		06/10	TOM ROACH	1	ICP/0730	ICP/1930
TFLD(T) O-730		06/07	JOEY SILVA	1	ICP/0730	ICP/1930
DO22 OK-OKS ECU #2178 E-503		06/07	AARON SUMPTER	1	ICP/0730	ICP/1930
DO23 KY-KYS 311 - 650J E-510		06/09	JERRY BROWN	2	ICP/0730	ICP/1930
DO23 KY-KYS 312 - 650J E-511		06/08	CHRIS ADAMS	2	ICP/0730	ICP/1930
ENG6 AR-OUF-PCS #691 E-838		06/13	RAYMOND SELF	3	ICP/0730	ICP/1930
ENG6 - 41 E-1004		06/11	DUSTIN DILL	3	ICP/0730	ICP/1930
ENG6 - E-642 - NORTH RIVER E-1007		06/12	CHRISTOPHER R CARTER	3	ICP/0730	ICP/1930
ENG6 WY-RSD 1602 E-849		06/14	FRANK HAINES	4	ICP/0730	ICP/1930
HC2 IA JACKSON BLM C-16		06/12	FRED ASHFORD	20	ICP/0730	ICP/1930
TFLD O-850		06/15	JAMES SEARCY	1	ICP/0730	ICP/1930
EXCA - HUGHES - FWS-OKR- E-1032		07/01	HARRIS WILSON	1	ICP/0730	ICP/1930
DO23 - HUGHES - FSW-OKR- E-1033		07/01	DANNON PITTMAN	1	ICP/0730	ICP/1930
TRAC - HUGHES - FWS-OKR E-1035		07/01	JAMES GASKINS	1	ICP/0730	ICP/1930
MEC - HUGHES - FWS-OKR E-1036		07/01	DONALD DEAN	1	ICP/0730	ICP/1930
<b>8. Division/Group Communication Summary</b>						
Function	Channel	RX Frequency N/W	RX Tone/NAC	TX Frequency N/W	TX Tone/NAC	Mode
COMMAND	ZONE 2 / CH2	159.1200N	NONE	151.3700N	100.0	A
AIR TO GROUND	ZONE 2 / CH4	169.2000N	NONE	169.2000N	NONE	A
TACTICAL	ZONE 2 / CH 1	154.2800N	NONE	154.2800N	156.7	A
AIR TO GROUND	ZONE 2 / CH14	166.6750N	NONE	166.6750N	NONE	A
AIR TO GROUND	ZONE 2 / CH15	169.1500N	NONE	169.1500N	NONE	A
AIR GUARD	ZONE 2 / CH16	168.6250N	NONE	168.6250N	110.9	A
<b>9. Prepared By (Resource Unit Leader)</b>			<b>Approved By (Planning Section Chief)</b>		<b>Date</b>	<b>Time</b>
SHAUN STEWART, RESL			JOE BISHOP, PSC2 (T)		06/03/2017	1800

## Division/Group Assignment List (ICS 204 WF)

<b>1. Incident Name:</b>			<b>3.</b>			
WEST MIMS			<b>Branch:</b>		<b>Division/Group:</b>	
<b>2. Operational Period:</b> <b>DAY SHIFT 0730-1930</b>			<b>I</b>		<b>D</b>	
Date/Time From: 06/04/2017 0730                   SUN	Date/Time To: 06/04/2017 1930                   SUN					
<b>4. Operations Personnel</b>						
<b>PLANNING OPERATIONS CHIEF</b>		TRENT INGRAM BLAIR JOINER (T)		<b>OPERATIONS CHIEF</b>		
				RICK DOLAN BUCK KLINE		
<b>BRANCH DIRECTOR</b>		LAURA WARD - 6/14 DAVID SMITH (T) - 6/11		<b>DIVISION/GROUP SUPERVISOR</b>		
				WALTER BOWERS - 6/11		
<b>SAFETY</b>		LARRY GRUBBS ROB THORP (T); LUCAS MINTON (T)		<b>AIR TACTICAL GROUP SUPERVISOR</b>		
				MARK NUNEZ, KEN MCLAUGHLIN		
<b>5. Resources Assigned this Period</b>						
Strike Team / Task Force / Resource Designator		LWD	Leader	Number Persons	Drop Off PT./Time	Pick Up PT./Time
FOBS O-844		06/15	ERIK APLAND	1	ICP/0730	ICP/1930
FOBS (T) O-696		06/08	HAPPY HOPPE	1	ICP/0730	ICP/1930
READ O-803		06/13	MICHAEL CRAWFORD	1	ICP/0730	ICP/1930
EMPF E-342.2		06/08	ROD SCHMIDT	1	ICP/0730	ICP/1930
SOF2 O-541		06/11	LOUIE CASAUS	1	ICP/0730	ICP/1930
<b>6. Control Operations/Work Assignments:</b>						
Task						
<ul style="list-style-type: none"> <li>• Patrol and mop up fuels appropriate to fuel type and anticipated weather and fire behavior.</li> <li>• Respond to any new starts within the division.</li> <li>• Monitor fire activity and location in the vicinity of Billies Island.</li> </ul>						
Purpose						
<ul style="list-style-type: none"> <li>• Keep fire south of the Suwannee Canal.</li> </ul>						
End State						
<ul style="list-style-type: none"> <li>• Fire activity north and west of Billy's Island has been detected and appropriate action has been initiated.</li> <li>• Fire is contained by adequate control line to reduce threat to escape; minimizing damage to private timberlands, private lands, and other resource values at risk.</li> </ul>						
<b>8. Division/Group Communication Summary</b>						
Function	Channel	RX Frequency N/W	RX Tone/NAC	TX Frequency N/W	TX Tone/NAC	Mode
COMMAND	ZONE 2 / CH2	159.1200N	NONE	151.3700N	100.0	A
AIR TO GROUND	ZONE 2 / CH4	169.2000N	NONE	169.2000N	NONE	A
TACTICAL	ZONE 2 / CH 1	154.2800N	NONE	154.2800N	156.7	A
AIR TO GROUND	ZONE 2 / CH14	166.6750N	NONE	166.6750N	NONE	A
AIR TO GROUND	ZONE 2 / CH15	169.1500N	NONE	169.1500N	NONE	A
AIR GUARD	ZONE 2 / CH16	168.6250N	NONE	168.6250N	110.9	A
<b>9. Prepared By (Resource Unit Leader)</b>		<b>Approved By (Planning Section Chief)</b>		<b>Date</b>		<b>Time</b>
SHAUN STEWART, RESL		JOE BISHOP, PSC2 (T)		06/03/2017		1800

## Division/Group Assignment List (ICS 204 WF)

<b>1. Incident Name:</b>			<b>3.</b>			
WEST MIMS			<b>I</b>	<b>D</b>		
<b>2. Operational Period:</b> DAY SHIFT 0730-1930						
Date/Time From: 06/04/2017 0730      SUN		Date/Time To: 06/04/2017 1930      SUN				
<b>4. Operations Personnel</b>						
<b>PLANNING OPERATIONS CHIEF</b>	TRENT INGRAM BLAIR JOINER (T)			<b>OPERATIONS CHIEF</b>	RICK DOLAN BUCK KLINE	
<b>BRANCH DIRECTOR</b>	LAURA WARD - 6/14 DAVID SMITH (T) - 6/11			<b>DIVISION/GROUP SUPERVISOR</b>	WALTER BOWERS - 6/11	
<b>SAFETY</b>	LARRY GRUBBS ROB THORP (T); LUCAS MINTON (T)			<b>AIR TACTICAL GROUP SUPERVISOR</b>	MARK NUNEZ, KEN MCLAUGHLIN	
<b>7. Special Instructions:</b>						
<p>Ensure LCES is in place before operations begin and stay hydrated. Drive defensively and with lights on at all times. Identify escape routes.</p> <p><b>For IA protocol see page 7</b></p> <p>Medical Emergency Channel: Command  ETA for Ambulance to Scene:  Air: 20 – 30 mins  Ground: 10 - 15 mins Paved roads only.  IWI – IC or approved person will use Channel 16 (Air Guard) for contact with air ambulance  Air Ambulance landing zone to be determined by IWI – IC  Utilize engines to provide dust abatement, as needed, prior to air ambulance landing</p>						
<b>8. Division/Group Communication Summary</b>						
Function	Channel	RX Frequency N/W	RX Tone/NAC	TX Frequency N/W	TX Tone/NAC	Mode
COMMAND	ZONE 2 / CH2	159.1200N	NONE	151.3700N	100.0	A
AIR TO GROUND	ZONE 2 / CH4	169.2000N	NONE	169.2000N	NONE	A
TACTICAL	ZONE 2 / CH 1	154.2800N	NONE	154.2800N	156.7	A
AIR TO GROUND	ZONE 2 / CH14	166.6750N	NONE	166.6750N	NONE	A
AIR TO GROUND	ZONE 2 / CH15	169.1500N	NONE	169.1500N	NONE	A
AIR GUARD	ZONE 2 / CH16	168.6250N	NONE	168.6250N	110.9	A
<b>9. Prepared By (Resource Unit Leader)</b>			<b>Approved By (Planning Section Chief)</b>		<b>Date</b>	<b>Time</b>
SHAUN STEWART, RESL			JOE BISHOP, PSC2 (T)		06/03/2017	1800

## Division/Group Assignment List (ICS 204 WF)

<b>1. Incident Name:</b>			<b>3.</b>			
WEST MIMS			<b>I</b>		<b>Division/Group:  INITIAL ATTACK WEST</b>	
<b>2. Operational Period:</b> DAY SHIFT 0730-1930						
Date/Time From: 06/04/2017 0730      SUN		Date/Time To: 06/04/2017 1930      SUN				
<b>4. Operations Personnel</b>						
<b>PLANNING OPERATIONS CHIEF</b>		TRENT INGRAM BLAIR JOINER (T)		<b>OPERATIONS CHIEF</b>		RICK DOLAN BUCK KLINE
<b>BRANCH DIRECTOR</b>		LAURA WARD - 6/14 DAVID SMITH (T) - 6/11		<b>DIVISION/GROUP SUPERVISOR</b>		RONALD L CALHOUN - 6/11
<b>SAFETY</b>		LARRY GRUBBS ROB THORP (T); LUCAS MINTON (T)		<b>AIR TACTICAL GROUP SUPERVISOR</b>		MARK NUNEZ KEN MCLAUGHLIN
<b>5. Resources Assigned this Period</b>						
Strike Team / Task Force / Resource Designator		LWD	Leader	Number Persons	Drop Off PT./Time	Pick Up PT./Time
STEQ O-762		06/08	HILTON BENNETT	1	ICP/0730	ICP/1930
TPL2 GFC 1413 E-981		06/08	SHAWN SPIKES	1	ICP/0730	ICP/1930
TPL2 GFC 1414 E-982		06/08	JASON BOHANNON	1	ICP/0730	ICP/1930
TPL3 GFC 1547 E-983		06/08	ORION GIBSON	1	ICP/0730	ICP/1930
DOZ1 HUDSON 7699 E-788		06/13	WILLIAM RAMSEY	2	ICP/0730	ICP/1930
STEQ O-799		06/10	STEVEN CAMPBELL	1	ICP/0730	ICP/1930
TPL3 GFC 3186 E-687		06/10	CLARANCE THOMAS	1	ICP/0730	ICP/1930
TPL2 GFC 3230 E-688		06/10	WILLIAM LANE	1	ICP/0730	ICP/1930
TPL3 GFC 1536 E-689		06/10	BRIAN HARDEN	1	ICP/0730	ICP/1930
READ O-803		06/13	MICHAEL CRAWFORD	1	ICP/0730	ICP/1930
SOF2 O-813		06/13	RANDY MILLER	1	ICP/0730	ICP/1930
<b>8. Division/Group Communication Summary</b>						
Function	Channel	RX Frequency N/W	RX Tone/NAC	TX Frequency N/W	TX Tone/NAC	Mode
COMMAND	ZONE 2 / CH 7	159.2700N	156.7	151.1000N	100.0	A
COMMAND	ZONE 2 / CH 8	159.2700N	156.7	151.1000N	123.0	A
TACTICAL	ZONE 2 / CH 11	163.1000N	NONE	163.1000N	NONE	A
AIR TO GROUND	ZONE 2 / CH 4	169.2000N	NONE	169.2000N	NONE	A
AIR TO GROUND	ZONE 2 / CH 14	166.6750N	NONE	166.6750N	NONE	A
AIR TO GROUND	ZONE 2 / CH 15	169.1500N	NONE	169.1500N	NONE	A
AIR GUARD	ZONE 2 / CH 16	168.6250N	NONE	168.6250N	110.9	A
<b>9. Prepared By (Resource Unit Leader)</b>			<b>Approved By (Planning Section Chief)</b>		<b>Date</b>	<b>Time</b>
SHAUN STEWART			JOE BISHOP, PSC2 (T)		06/03/2017	1800

## Division/Group Assignment List (ICS 204 WF)

<b>1. Incident Name:</b>		<b>3.</b>				
WEST MIMS		<b>I</b>		<b>INITIAL ATTACK WEST</b>		
<b>2. Operational Period:</b> DAY SHIFT 0730-1930						
Date/Time From: 06/04/2017 0730	SUN	Date/Time To: 06/04/2017 1930	SUN			
<b>4. Operations Personnel</b>						
<b>PLANNING OPERATIONS CHIEF</b>		TRENT INGRAM BLAIR JOINER (T)		<b>OPERATIONS CHIEF</b>		
<b>BRANCH DIRECTOR</b>		LAURA WARD - 6/14 DAVID SMITH (T) - 6/11		<b>DIVISION/GROUP SUPERVISOR</b>		
<b>SAFETY</b>		LARRY GRUBBS ROB THORP (T); LUCAS MINTON (T)		<b>AIR TACTICAL GROUP SUPERVISOR</b>		
				RICK DOLAN BUCK KLINE		
				RONALD L CALHOUN - 6/11		
				MARK NUNEZ KEN MCLAUGHLIN		
<b>6. Control Operations/Work Assignments:</b>						
<b>Task</b>						
<ul style="list-style-type: none"> <li>• Respond to any new starts as requested by OKR duty officer.</li> <li>• Coordinate initial attack action with assigned aviation and/or ground assets.</li> </ul>						
<b>Purpose</b>						
<ul style="list-style-type: none"> <li>• Ensure timely response on any initial attack within OKR jurisdictional boundaries and vicinity.</li> </ul>						
<b>End State</b>						
<ul style="list-style-type: none"> <li>• Fire activity has been detected and appropriate action has been initiated.</li> </ul>						
<b>7. Special Instructions:</b>						
<p>Contact Resource Advisors for any cultural or archeological needs, as well as, RCW concerns.                  Ensure LCES is in place before operations begin and stay hydrated.                  Drive defensively and with lights on at all times.                  Communications: Use the tactical channel for the division you are in.                  Staging on east side at Refuge office.</p> <p>Use caution when working around logging operations.</p> <p>Medical Emergency Channel: Command                  ETA for Ambulance to Scene:                  Air: 20 – 30 mins                  Ground: 10 - 15 mins Paved roads only.                  IWI – IC or approved person will use Channel 16 (Air Guard) for contact with air ambulance                  Air Ambulance landing zone to be determined by IWI – IC                  Utilize engines to provide dust abatement, as needed, prior to air ambulance landing</p> <p><b>For IA protocol see page 7</b></p>						
<b>8. Division/Group Communication Summary</b>						
Function	Channel	RX Frequency N/W	RX Tone/NAC	TX Frequency N/W	TX Tone/NAC	Mode
COMMAND	ZONE 2 / CH 7	159.2700N	156.7	151.1000N	100.0	A
COMMAND	ZONE 2 / CH 8	159.2700N	156.7	151.1000N	123.0	A
TACTICAL	ZONE 2 / CH 11	163.1000N	NONE	163.1000N	NONE	A
AIR TO GROUND	ZONE 2 / CH 4	169.2000N	NONE	169.2000N	NONE	A
AIR TO GROUND	ZONE 2 / CH 14	166.6750N	NONE	166.6750N	NONE	A
AIR TO GROUND	ZONE 2 / CH 15	169.1500N	NONE	169.1500N	NONE	A
AIR GUARD	ZONE 2 / CH 16	168.6250N	NONE	168.6250N	110.9	A
<b>9. Prepared By (Resource Unit Leader)</b>		<b>Approved By (Planning Section Chief)</b>		<b>Date</b>	<b>Time</b>	
SHAUN STEWART		JOE BISHOP, PSC2 (T)		06/03/2017	1800	

## Division/Group Assignment List (ICS 204 WF)

<b>1. Incident Name:</b>			<b>3.</b>			
WEST MIMS			<b>III</b>		<b>Division/Group: INITIAL ATTACK EAST</b>	
<b>2. Operational Period:</b> DAY SHIFT 0730-1930						
Date/Time From: 06/04/2017 0730      SUN		Date/Time To: 06/04/2017 1930      SUN				
<b>4. Operations Personnel</b>						
<b>PLANNING OPERATIONS CHIEF</b>		TRENT INGRAM BLAIR JOINER (T) 6/9		<b>OPERATIONS CHIEF</b>		
				RICK DOLAN; FRED BOEHM BUTCH GALBRAITH (T) 6/11		
<b>BRANCH DIRECTOR</b>		MIKE BRUNSON (6/13)		<b>DIVISION/GROUP SUPERVISOR</b>		
				DONALD HARRIS 6/17 ADAM MCCULLOUGH (T) 6/6		
<b>SAFETY</b>		LARRY CONNELL		<b>AIR TACTICAL GROUP SUPERVISOR</b>		
				MARK NUNEZ KEN MCLAUGHLIN		
<b>5. Resources Assigned this Period</b>						
Strike Team / Task Force / Resource Designator		LWD	Leader	Number Persons	Drop Off PT./Time	Pick Up PT./Time
TFLD(T) E-35.3		06/06	RANDALL MCLAIN	1	EAST CAMP/0730	EAST CAMP/1930
ENG6 NC-POR PLE1 E-2		06/08	AMY MIDGETT	2	EAST CAMP/0730	EAST CAMP/1930
ENG6 OK 4261 E-36			UNSTAFFED		EAST CAMP/0730	EAST CAMP/1930
ENG6 GLENWOOD 632 E-796		06/14	AARON BENNINGTON	3	EAST CAMP/0730	EAST CAMP/1930
TPL2 SC-CRR D-223 E-240			UNSTAFFED		EAST CAMP/0730	EAST CAMP/1930
TPL2 NC-POR 750J PX3 E-131		06/07	KENNY POWELL	1	EAST CAMP/0730	EAST CAMP/1930
TPL2 OKE 56 E-35		06/13	WAYNE SMITH	2	EAST CAMP/0730	EAST CAMP/1930
TPL4 SMR 4441 E-508			UNSTAFFED		EAST CAMP/0730	EAST CAMP/1930
TPL2 GA-SAR D922 E-288			UNSTAFFED		EAST CAMP/0730	EAST CAMP/1930
STEQ O-761		06/08	DERRICK W DUNCAN	1	EAST CAMP/0730	EAST CAMP/1930
TPL3 GFC 1208 E-670		06/08	RANDALL G SPELL JR	1	EAST CAMP/0730	EAST CAMP/1930
TPL2 GFC 2331 E-979		06/08	GABRIEL CLUFF	1	EAST CAMP/0730	EAST CAMP/1930
TPL3 GFC 1550 E-980		06/08	KYLE CRIBB	1	EAST CAMP/0730	EAST CAMP/1930
DOZ2 OKE 54 E-34		06/13	MATT BROWN	1	EAST CAMP/0730	EAST CAMP/1930
<b>8. Division/Group Communication Summary</b>						
Function	Channel	RX Frequency N/W	RX Tone/NAC	TX Frequency N/W	TX Tone/NAC	Mode
COMMAND	ZONE 2 / CH 7	159.2700N	156.7	151.1000N	100.0	A
COMMAND	ZONE 2 / CH 8	159.2700N	156.7	151.1000N	123.0	A
AIR TO GROUND	ZONE 2 / CH 4	169.2000N	NONE	169.2000N	NONE	A
TACTICAL	ZONE 2 / CH 12	159.4425N	NONE	159.4425N	NONE	A
AIR TO GROUND	ZONE 2 / CH 14	166.6750N	NONE	166.6750N	NONE	A
AIR TO GROUND	ZONE 2 / CH 15	169.1500N	NONE	169.1500N	NONE	A
AIR GUARD	ZONE 2 / CH 16	168.6250N	NONE	168.6250N	110.9	A
<b>9. Prepared By (Resource Unit Leader)</b>			<b>Approved By (Planning Section Chief)</b>		<b>Date</b>	<b>Time</b>
FRED NOACK			JOE BISHOP, PSC2 (T)		06/03/2017	1800



## Division/Group Assignment List (ICS 204 WF)

<b>1. Incident Name:</b>			<b>3.</b>				
WEST MIMS			<b>III</b>	<b>Branch:</b>		<b>Division/Group:</b>	
<b>2. Operational Period:</b> DAY SHIFT 0730-1930				<b>INITIAL ATTACK EAST</b>			
Date/Time From: 06/04/2017 0730      SUN	Date/Time To: 06/04/2017 1930      SUN						
<b>4. Operations Personnel</b>							
<b>PLANNING OPERATIONS CHIEF</b>		TRENT INGRAM BLAIR JOINER (T) 6/9		<b>OPERATIONS CHIEF</b>		RICK DOLAN; FRED BOEHM BUTCH GALBRAITH (T) 6/11	
<b>BRANCH DIRECTOR</b>		MIKE BRUNSON (6/13)		<b>DIVISION/GROUP SUPERVISOR</b>		DONALD HARRIS 6/17 ADAM MCCULLOUGH (T) 6/6	
<b>SAFETY</b>		LARRY CONNELL		<b>AIR TACTICAL GROUP SUPERVISOR</b>		MARK NUNEZ KEN MCLAUGHLIN	
<b>6. Control Operations/Work Assignments:</b>							
<b>Task</b>							
<ul style="list-style-type: none"> <li>Respond to any new starts as requested by OKR duty officer.</li> <li>Coordinate initial attack action with assigned aviation and/or ground assets.</li> </ul>							
<b>Purpose</b>							
<ul style="list-style-type: none"> <li>Ensure timely response on any initial attack within OKR jurisdictional boundaries and vicinity.</li> </ul>							
<b>End State</b>							
<ul style="list-style-type: none"> <li>Fire activity has been detected and appropriate action has been initiated.</li> </ul>							
<b>7. Special Instructions:</b>							
<p>Contact Resource Advisors for any cultural or archeological needs, as well as, RCW concerns.            Ensure LCES is in place before operations begin and stay hydrated.            Drive defensively and with lights on at all times.            Communications: Use the tactical channel for the division you are in.            Staging on east side at Refuge office.</p> <p>Use caution when working around logging operations.</p> <p>Medical Emergency Channel: Command            ETA for Ambulance to Scene:            Air: 20 – 30 mins            Ground: 10 - 15 mins Paved roads only.            IWI – IC or approved person will use Channel 16 (Air Guard) for contact with air ambulance            Air Ambulance landing zone to be determined by IWI – IC            Utilize engines to provide dust abatement, as needed, prior to air ambulance landing</p> <p><b>For IA protocol see page 7</b></p>							
<b>8. Division/Group Communication Summary</b>							
Function	Channel	RX Frequency N/W	RX Tone/NAC	TX Frequency N/W	TX Tone/NAC	Mode	
COMMAND	ZONE 2 / CH 7	159.2700N	156.7	151.1000N	100.0	A	
COMMAND	ZONE 2 / CH 8	159.2700N	156.7	151.1000N	123.0	A	
AIR TO GROUND	ZONE 2 / CH 4	169.2000N	NONE	169.2000N	NONE	A	
TACTICAL	ZONE 2 / CH 12	159.4425N	NONE	159.4425N	NONE	A	
AIR TO GROUND	ZONE 2 / CH 14	166.6750N	NONE	166.6750N	NONE	A	
AIR TO GROUND	ZONE 2 / CH 15	169.1500N	NONE	169.1500N	NONE	A	
AIR GUARD	ZONE 2 / CH 16	168.6250N	NONE	168.6250N	110.9	A	
<b>9. Prepared By (Resource Unit Leader)</b>			<b>Approved By (Planning Section Chief)</b>			<b>Date</b>	<b>Time</b>
FRED NOACK			JOE BISHOP, PSC2 (T)			06/03/2017	1800

## Division/Group Assignment List (ICS 204 WF)

<b>1. Incident Name:</b>			<b>3.</b>			
WEST MIMS			<b>III</b>		<b>M/N/O</b>	
<b>2. Operational Period:</b> DAY SHIFT 0730-1930						
Date/Time From: 06/04/2017 0730      SUN		Date/Time To: 06/04/2017 1930      SUN				
<b>4. Operations Personnel</b>						
<b>PLANNING OPERATIONS CHIEF</b>		TRENT INGRAM BLAIR JOINER (T) 6/9		<b>OPERATIONS CHIEF</b>		RICK DOLAN; FRED BOEHM BUTCH GALBRAITH (T) 6/11
<b>BRANCH DIRECTOR</b>		MICHAEL H BRUNSON 6/13		<b>DIVISION/GROUP SUPERVISOR</b>		BRENT VAN GUNDY 6/14; SHAWN ALEXANDER 6/4; PAUL RYAN (T) 6/10
<b>SAFETY</b>		LARRY CONNELL		<b>AIR TACTICAL GROUP SUPERVISOR</b>		MARK NUNEZ, KEN MCLAUGHLIN
<b>5. Resources Assigned this Period</b>						
Strike Team / Task Force / Resource Designator		LWD	Leader	Number Persons	Drop Off PT./Time	Pick Up PT./Time
TFLD O-795		06/10	TROY L HELMS JR	1	EAST CAMP/0730	EAST CAMP/1930
TFLD O-849		06/14	JOSHUA ADAM BELL	1	EAST CAMP/0730	EAST CAMP/1930
ENG6 AR-OZF E671 E-283		06/09	ROBERT J YONILES	3	EAST CAMP/0730	EAST CAMP/1930
ENG6 NAX BRUSH 7-4 E-848		06/13	KEITH E KENNEDY	3	EAST CAMP/0730	EAST CAMP/1930
ENG6 376 E-1011		06/14	NICK B VALENTINE	2	EAST CAMP/0730	EAST CAMP/1930
WTS2 WET 'N RED, LLC - 58592 E-365		06/14	ALLEN WEST	2	EAST CAMP/0730	EAST CAMP/1930
TFLD O-594		06/05	MICHAEL SMITH	1	EAST CAMP/0730	EAST CAMP/1930
TFLD (T) E-656.4		06/11	CHARLES W MCKINNEY	1	EAST CAMP/0730	EAST CAMP/1930
ENG6 161 E-656		06/11	PAUL OTTMER	3	EAST CAMP/0730	EAST CAMP/1930
ENG6 STH ARK 112 E-773		06/05	MELISSA FRIESS	3	EAST CAMP/0730	EAST CAMP/1930
ENG6 MES 6198 E-871		06/16	MARK ROUSSEAU	3	EAST CAMP/0730	EAST CAMP/1930
ENG6 ACS29283 E-1012		06/12	MATTHEW KLINDT	2	EAST CAMP/0730	EAST CAMP/1930
ENG6 ACS31278 E-1014		06/12	ELIJAH PREZIOSO	2	EAST CAMP/0730	EAST CAMP/1930
STEQ O-656		06/07	KEN COOPER	1	EAST CAMP/0730	EAST CAMP/1930
EXCA T2 WILDLANDS FIRE SERVICE E-997		06/14	SECHRIST DAVID	1	EAST CAMP/0730	EAST CAMP/1930
<b>8. Division/Group Communication Summary</b>						
Function	Channel	RX Frequency N/W	RX Tone/NAC	TX Frequency N/W	TX Tone/NAC	Mode
COMMAND	ZONE 2 / CH 3	159.1200N	NONE	151.3700N	82.5	A
AIR TO GROUND	ZONE 2 / CH 4	169.2000N	NONE	169.2000N	NONE	A
TACTICAL	ZONE 2 / CH 11	163.7125N	NONE	163.7125N	NONE	A
AIR TO GROUND	ZONE 2 / CH 14	166.6750N	NONE	166.6750N	NONE	A
AIR TO GROUND	ZONE 2 / CH 15	169.1500N	NONE	169.1500N	NONE	A
AIR GUARD	ZONE 2 / CH 16	168.6250N	NONE	168.6250N	110.9	A
<b>9. Prepared By (Resource Unit Leader)</b>			<b>Approved By (Planning Section Chief)</b>		<b>Date</b>	<b>Time</b>
FRED NOACK			JOE BISHOP, PSC2 (T)		06/03/2017	1800

## Division/Group Assignment List (ICS 204 WF)

<b>1. Incident Name:</b>			<b>3.</b>			
WEST MIMS			<b>III</b>		<b>M/N/O</b>	
<b>2. Operational Period:</b> DAY SHIFT 0730-1930						
Date/Time From: 06/04/2017 0730      SUN		Date/Time To: 06/04/2017 1930      SUN				
<b>4. Operations Personnel</b>						
<b>PLANNING OPERATIONS CHIEF</b>		TRENT INGRAM BLAIR JOINER (T) 6/9		<b>OPERATIONS CHIEF</b>		RICK DOLAN; FRED BOEHM BUTCH GALBRAITH (T) 6/11
<b>BRANCH DIRECTOR</b>		MICHAEL H BRUNSON 6/13		<b>DIVISION/GROUP SUPERVISOR</b>		BRENT VAN GUNDY 6/14; SHAWN ALEXANDER 6/4; PAUL RYAN (T) 6/10
<b>SAFETY</b>		LARRY CONNELL		<b>AIR TACTICAL GROUP SUPERVISOR</b>		MARK NUNEZ, KEN MCLAUGHLIN
<b>5. Resources Assigned this Period</b>						
Strike Team / Task Force / Resource Designator		LWD	Leader	Number Persons	Drop Off PT./Time	Pick Up PT./Time
TFLD O-791		06/10	MICHAEL M KCLICK	1	EAST CAMP/0730	EAST CAMP/1930
TFLD (T) O-643		06/05	JAKE GOEBEL	1	EAST CAMP/0730	EAST CAMP/1930
ENG6 FWS 462 E-261		06/04	CHRISTOPHER NOTHSTINE	3	EAST CAMP/0730	EAST CAMP/1930
ENG6 REDBIRD 6171 E-447		06/06	RUPERT NOWLIN	4	EAST CAMP/0730	EAST CAMP/1930
ENG6 MBF - 694 E-776		06/03	JOSH MCGEE	3	EAST CAMP/0730	EAST CAMP/1930
ENG6 SCS #14248 E-1005		06/12	ERIC I WEST	2	EAST CAMP/0730	EAST CAMP/1930
ENG6 KY-CGP WFM2 E-1016		06/14	CHARLES EDDIE CAPPS	3	EAST CAMP/0730	EAST CAMP/1930
ENG6 KY-KYS 450 E-1017		06/14	TIM S CROWELL	2	EAST CAMP/0730	EAST CAMP/1930
TPL4 8191 HUNTSVILLE E-570		06/07	JEFF LEBLANC	2	EAST CAMP/0730	EAST CAMP/1930
TPL4 8191 JACKSONVILLE E-571		06/07	TERRY RICHARDSON	2	EAST CAMP/0730	EAST CAMP/1930
WTS2 BONNELL SAND & GRAVEL I E-366		06/05	VINCENT HARLIN	1	EAST CAMP/0730	EAST CAMP/1930
HEQB E-570.3		06/07	BERNHARD BUCKNER	1	EAST CAMP/0730	EAST CAMP/1930
DOZ2 750K HASSELL E-504		07/01	JAIME EDENFIELD	1	EAST CAMP/0730	EAST CAMP/1930
DOZ2 650K E-528		07/01	JAMES DAVIS	1	EAST CAMP/0730	EAST CAMP/1930
<b>8. Division/Group Communication Summary</b>						
Function	Channel	RX Frequency N/W	RX Tone/NAC	TX Frequency N/W	TX Tone/NAC	Mode
COMMAND	ZONE 2 / CH 3	159.1200N	NONE	151.3700N	82.5	A
AIR TO GROUND	ZONE 2 / CH 4	169.2000N	NONE	169.2000N	NONE	A
TACTICAL	ZONE 2 / CH 11	163.7125N	NONE	163.7125N	NONE	A
AIR TO GROUND	ZONE 2 / CH 14	166.6750N	NONE	166.6750N	NONE	A
AIR TO GROUND	ZONE 2 / CH 15	169.1500N	NONE	169.1500N	NONE	A
AIR GUARD	ZONE 2 / CH 16	168.6250N	NONE	168.6250N	110.9	A
<b>9. Prepared By (Resource Unit Leader)</b>			<b>Approved By (Planning Section Chief)</b>		<b>Date</b>	<b>Time</b>
FRED NOACK			JOE BISHOP, PSC2 (T)		06/03/2017	1800

## Division/Group Assignment List (ICS 204 WF)

<b>1. Incident Name:</b>			<b>3.</b>			
WEST MIMS			<b>III</b>		<b>M/N/O</b>	
<b>2. Operational Period:</b> DAY SHIFT 0730-1930						
Date/Time From: 06/04/2017 0730      SUN		Date/Time To: 06/04/2017 1930      SUN				
<b>4. Operations Personnel</b>						
<b>PLANNING OPERATIONS CHIEF</b>		TRENT INGRAM BLAIR JOINER (T) 6/9		<b>OPERATIONS CHIEF</b>		RICK DOLAN; FRED BOEHM BUTCH GALBRAITH (T) 6/11
<b>BRANCH DIRECTOR</b>		MICHAEL H BRUNSON 6/13		<b>DIVISION/GROUP SUPERVISOR</b>		BRENT VAN GUNDY 6/14; SHAWN ALEXANDER 6/4; PAUL RYAN (T) 6/10
<b>SAFETY</b>		LARRY CONNELL		<b>AIR TACTICAL GROUP SUPERVISOR</b>		MARK NUNEZ, KEN MCLAUGHLIN
<b>5. Resources Assigned this Period</b>						
Strike Team / Task Force / Resource Designator		LWD	Leader	Number Persons	Drop Off PT./Time	Pick Up PT./Time
READ O-802		06/14	JOHN P DUNLAP	1	EAST CAMP/0730	EAST CAMP/1930
EMPF O-752		06/09	BRYAN WARNER	1	EAST CAMP/0730	EAST CAMP/1930
EMPF E-316.2		06/06	STEVE WOLFSTICH	1	EAST CAMP/0730	EAST CAMP/1930
SOF2 O-814		06/10	STEVEN R DAVIS	1	EAST CAMP/0730	EAST CAMP/1930
<b>6. Control Operations/Work Assignments:</b>						
<p><b>Task</b></p> <ul style="list-style-type: none"> <li>• Respond to any new starts within the division.</li> <li>• Patrol and mop up fuels appropriate to fuel type and anticipated weather and fire behavior.</li> </ul> <p><b>Purpose</b></p> <ul style="list-style-type: none"> <li>• Keep fire within established fire containment lines.</li> </ul> <p><b>End State</b></p> <ul style="list-style-type: none"> <li>• Fire is contained by adequate control line to reduce threat to escape; minimizing damage to private timberlands, private lands, and other resource values at risk.</li> </ul>						
<b>7. Special Instructions:</b>						
<p>Ensure LCES are in place before operations begin and stay hydrated. Drive defensively and with lights on at all times. Identify escape routes. Use caution when working around logging operations.</p> <p><b>Task Force Smith (TFLD O-594) and resources and Task Force Klick (TFLD O-791) and resources are working in the St. George Zone.</b></p> <p><b>For IA protocol see page 7</b></p>						
<b>8. Division/Group Communication Summary</b>						
Function	Channel	RX Frequency N/W	RX Tone/NAC	TX Frequency N/W	TX Tone/NAC	Mode
COMMAND	ZONE 2 / CH 3	159.1200N	NONE	151.3700N	82.5	A
AIR TO GROUND	ZONE 2 / CH 4	169.2000N	NONE	169.2000N	NONE	A
TACTICAL	ZONE 2 / CH 11	163.7125N	NONE	163.7125N	NONE	A
AIR TO GROUND	ZONE 2 / CH 14	166.6750N	NONE	166.6750N	NONE	A
AIR TO GROUND	ZONE 2 / CH 15	169.1500N	NONE	169.1500N	NONE	A
AIR GUARD	ZONE 2 / CH 16	168.6250N	NONE	168.6250N	110.9	A
<b>9. Prepared By (Resource Unit Leader)</b>			<b>Approved By (Planning Section Chief)</b>		<b>Date</b>	<b>Time</b>
FRED NOACK			JOE BISHOP, PSC2 (T)		06/03/2017	1800

## Division/Group Assignment List (ICS 204 WF)

<b>1. Incident Name:</b>			<b>3.</b>			
WEST MIMS			<b>III</b>		<b>M/N/O</b>	
<b>2. Operational Period:</b> DAY SHIFT 0730-1930						
Date/Time From: 06/04/2017 0730      SUN		Date/Time To: 06/04/2017 1930      SUN				
<b>4. Operations Personnel</b>						
<b>PLANNING OPERATIONS CHIEF</b>		TRENT INGRAM BLAIR JOINER (T) 6/9		<b>OPERATIONS CHIEF</b>		RICK DOLAN; FRED BOEHM BUTCH GALBRAITH (T) 6/11
<b>BRANCH DIRECTOR</b>		MICHAEL H BRUNSON 6/13		<b>DIVISION/GROUP SUPERVISOR</b>		BRENT VAN GUNDY 6/14; SHAWN ALEXANDER 6/4; PAUL RYAN (T) 6/10
<b>SAFETY</b>		LARRY CONNELL		<b>AIR TACTICAL GROUP SUPERVISOR</b>		MARK NUNEZ, KEN MCLAUGHLIN
<b>7. Special Instructions:</b>						
<p>Medical Emergency Channel: Command  ETA for Ambulance to Scene:  Air: 20 – 30 mins  Ground: 10 - 15 mins Paved roads only.  IWI – IC or approved person will use Channel 16 (Air Guard) for contact with air ambulance  Air Ambulance landing zone to be determined by IWI – IC  Utilize engines to provide dust abatement, as needed, prior to air ambulance landing</p>						
<b>8. Division/Group Communication Summary</b>						
Function	Channel	RX Frequency N/W	RX Tone/NAC	TX Frequency N/W	TX Tone/NAC	Mode
COMMAND	ZONE 2 / CH 3	159.1200N	NONE	151.3700N	82.5	A
AIR TO GROUND	ZONE 2 / CH 4	169.2000N	NONE	169.2000N	NONE	A
TACTICAL	ZONE 2 / CH 11	163.7125N	NONE	163.7125N	NONE	A
AIR TO GROUND	ZONE 2 / CH 14	166.6750N	NONE	166.6750N	NONE	A
AIR TO GROUND	ZONE 2 / CH 15	169.1500N	NONE	169.1500N	NONE	A
AIR GUARD	ZONE 2 / CH 16	168.6250N	NONE	168.6250N	110.9	A
<b>9. Prepared By (Resource Unit Leader)</b>			<b>Approved By (Planning Section Chief)</b>		<b>Date</b>	<b>Time</b>
FRED NOACK			JOE BISHOP, PSC2 (T)		06/03/2017	1800

## Division/Group Assignment List (ICS 204 WF)

<b>1. Incident Name:</b>			<b>3.</b>			
WEST MIMS			<b>IV</b>		<b>A</b>	
<b>2. Operational Period:</b> DAY SHIFT 0730-1930						
Date/Time From: 06/04/2017 0730      SUN		Date/Time To: 06/04/2017 1930      SUN				
<b>4. Operations Personnel</b>						
<b>OPERATIONS CHIEF</b>		TRENT INGRAM BLAIR JOINER (T)		<b>OPERATIONS CHIEF</b>		
				RICK DOLAN FRED BOEHM; BUTCH GALBRAITH (T)		
<b>BRANCH DIRECTOR</b>		MICHAEL WORK 6/11 KAREN SCHOLL (T) 6/5		<b>DIVISION/GROUP SUPERVISOR</b>		
				JUSTIN HANLEY 6/14		
<b>SAFETY</b>		LARRY CONNELL		<b>AIR TACTICAL GROUP SUPERVISOR</b>		
				MARK NUNEZ, KEN MCLAUGHLIN		
<b>5. Resources Assigned this Period</b>						
Strike Team / Task Force / Resource Designator		LWD	Leader	Number Persons	Drop Off PT./Time	Pick Up PT./Time
TFLD O-606		06/04	DAREK PEPPE	1	EAST CAMP/0730	EAST CAMP/1930
TFLD O-790		06/11	MATTHEW CASTELLON	1	EAST CAMP/0730	EAST CAMP/1930
ENG6 MT-KNF 631 E-285		06/14	JULIAN ADAUTO	5	EAST CAMP/0730	EAST CAMP/1930
ENG6 MS-MNF 6171 E-77		06/05	DAVID GIBSON	3	EAST CAMP/0730	EAST CAMP/1930
ENG6 AR-OZF 631 E-56		06/07	DARRYL BRIGHTWELL	3	EAST CAMP/0730	EAST CAMP/1930
ENG6 GFC4201452 E-1019		06/11	DON THOMAS	2	EAST CAMP/0730	EAST CAMP/1930
WTS2 STRICKLANDS E-272		07/01	JOHN TINER	1	EAST CAMP/0730	EAST CAMP/1930
WTS2 TIPTON & YOUNG CONST E-340		07/01	DEVIN MCHALEY	1	EAST CAMP/0730	EAST CAMP/1930
TFLD O-851		06/15	CHARLES DAVIS	1	EAST CAMP/0730	EAST CAMP/1930
ENG6 KY-KYS - 310 E-660		06/11	JOHN MINK	2	EAST CAMP/0730	EAST CAMP/1930
ENG6 KY-KYS 410 E-661		06/11	KEVIN RADSCHWEIT	2	EAST CAMP/0730	EAST CAMP/1930
ENG6 UNIT # 9260 FT WOLTERS TF2 E-1015		06/13	BOE ADLER	3	EAST CAMP/0730	EAST CAMP/1930
TPL4 TX-TFS E-471		06/07	MAYNARD WILLIAMS	2	EAST CAMP/0730	EAST CAMP/1930
TPL4 6192 NEW BOSTON E-467		06/07	JONATHON KELLER	2	EAST CAMP/0730	EAST CAMP/1930
EXCA2 WILDLANDS FIRE SERVICE 113984 E-996		07/01	ROY ROWEN	2	EAST CAMP/0730	EAST CAMP/1930
<b>8. Division/Group Communication Summary</b>						
Function	Channel	RX Frequency N/W	RX Tone/NAC	TX Frequency N/W	TX Tone/NAC	Mode
AIR TO GROUND	ZONE 2 / CH 4	169.2000N	NONE	169.2000N	NONE	A
COMMAND	ZONE 2 / CH 8	159.2700N	156.7	151.1000N	123.0	A
TACTICAL	ZONE 2 / CH 12	159.4425N	NONE	159.4425N	NONE	A
AIR TO GROUND	ZONE 2 / CH 14	166.6750N	NONE	166.6750N	NONE	A
AIR TO GROUND	ZONE 2 / CH 15	169.1500N	NONE	169.1500N	NONE	A
AIR GUARD	ZONE 2 / CH 16	168.6250N	NONE	168.6250N	110.9	A
<b>9. Prepared By (Resource Unit Leader)</b>			<b>Approved By (Planning Section Chief)</b>		<b>Date</b>	<b>Time</b>
PEECH KELLER			JOE BISHOP, PSC2 (T)		06/03/2017	1800

## Division/Group Assignment List (ICS 204 WF)

<b>1. Incident Name:</b>			<b>3.</b>			
WEST MIMS			<b>Branch:</b>		<b>Division/Group:</b>	
<b>2. Operational Period:</b> <b>DAY SHIFT 0730-1930</b>			<b>IV</b>		<b>A</b>	
Date/Time From: 06/04/2017 0730                    SUN		Date/Time To: 06/04/2017 1930                    SUN				
<b>4. Operations Personnel</b>						
<b>OPERATIONS CHIEF</b>		TRENT INGRAM BLAIR JOINER (T)		<b>OPERATIONS CHIEF</b>		RICK DOLAN FRED BOEHM; BUTCH GALBRAITH (T)
<b>BRANCH DIRECTOR</b>		MICHAEL WORK 6/11 KAREN SCHOLL (T) 6/5		<b>DIVISION/GROUP SUPERVISOR</b>		JUSTIN HANLEY 6/14
<b>SAFETY</b>		LARRY CONNELL		<b>AIR TACTICAL GROUP SUPERVISOR</b>		MARK NUNEZ, KEN MCLAUGHLIN
<b>5. Resources Assigned this Period</b>						
Strike Team / Task Force / Resource Designator		LWD	Leader	Number Persons	Drop Off PT./Time	Pick Up PT./Time
READ O-802		06/14	JOHN P DUNLAP	1	EAST CAMP/0730	EAST CAMP/1930
EMPF E-375.2		06/07	MARTIN CARRILLO	1	EAST CAMP/0730	EAST CAMP/1930
SOF2 O-540		06/12	JACK BENZILIO	1	EAST CAMP/0730	EAST CAMP/1930
<b>6. Control Operations/Work Assignments:</b>						
Task						
<ul style="list-style-type: none"> <li>• Patrol and mop up fuels appropriate to fuel type and anticipated weather and fire behavior.</li> <li>• Respond to any new starts within the division.</li> </ul>						
Purpose						
<ul style="list-style-type: none"> <li>• Keep fire north of FL 2.</li> </ul>						
End State						
<ul style="list-style-type: none"> <li>• Fire is contained by adequate control line to reduce threat to escape; minimizing damage to private timberlands, private lands, and other resource values at risk.</li> </ul>						
<b>7. Special Instructions:</b>						
TFLD O-851 will be working in St. George Zone.						
Ensure LCES is in place before operations begin and stay hydrated. Drive defensively and with lights on at all times. Identify escape routes. Bridge near DP 9 restricted to pickups - No engines. Bridge on swamp perimeter road just east of first Branch has steep drop offs - 1 lane travel - watch for barricades.						
Use caution when working around logging operations.						
<b>For IA protocol see page 7</b>						
<b>8. Division/Group Communication Summary</b>						
Function	Channel	RX Frequency N/W	RX Tone/NAC	TX Frequency N/W	TX Tone/NAC	Mode
AIR TO GROUND	ZONE 2 / CH 4	169.2000N	NONE	169.2000N	NONE	A
COMMAND	ZONE 2 / CH 8	159.2700N	156.7	151.1000N	123.0	A
TACTICAL	ZONE 2 / CH 12	159.4425N	NONE	159.4425N	NONE	A
AIR TO GROUND	ZONE 2 / CH 14	166.6750N	NONE	166.6750N	NONE	A
AIR TO GROUND	ZONE 2 / CH 15	169.1500N	NONE	169.1500N	NONE	A
AIR GUARD	ZONE 2 / CH 16	168.6250N	NONE	168.6250N	110.9	A
<b>9. Prepared By (Resource Unit Leader)</b>			<b>Approved By (Planning Section Chief)</b>		<b>Date</b>	<b>Time</b>
PEECH KELLER			JOE BISHOP, PSC2 (T)		06/03/2017	1800

## Division/Group Assignment List (ICS 204 WF)

<b>1. Incident Name:</b>			<b>3.</b>			
WEST MIMS			<b>IV</b>		<b>A</b>	
<b>2. Operational Period:</b> DAY SHIFT 0730-1930						
Date/Time From: 06/04/2017 0730      SUN		Date/Time To: 06/04/2017 1930      SUN				
<b>4. Operations Personnel</b>						
<b>OPERATIONS CHIEF</b>		TRENT INGRAM BLAIR JOINER (T)		<b>OPERATIONS CHIEF</b>		RICK DOLAN FRED BOEHM; BUTCH GALBRAITH (T)
<b>BRANCH DIRECTOR</b>		MICHAEL WORK 6/11 KAREN SCHOLL (T) 6/5		<b>DIVISION/GROUP SUPERVISOR</b>		JUSTIN HANLEY 6/14
<b>SAFETY</b>		LARRY CONNELL		<b>AIR TACTICAL GROUP SUPERVISOR</b>		MARK NUNEZ, KEN MCLAUGHLIN
<b>7. Special Instructions:</b>						
<p>Medical Emergency Channel: Command            ETA for Ambulance to Scene:            Air: 20 – 30 mins            Ground: 10 - 15 mins Paved roads only.            IWI – IC or approved person will use Channel 16 (Air Guard) for contact with air ambulance            Air Ambulance landing zone to be determined by IWI – IC            Utilize engines to provide dust abatement, as needed, prior to air ambulance landing</p>						
<b>8. Division/Group Communication Summary</b>						
Function	Channel	RX Frequency N/W	RX Tone/NAC	TX Frequency N/W	TX Tone/NAC	Mode
AIR TO GROUND	ZONE 2 / CH 4	169.2000N	NONE	169.2000N	NONE	A
COMMAND	ZONE 2 / CH 8	159.2700N	156.7	151.1000N	123.0	A
TACTICAL	ZONE 2 / CH 12	159.4425N	NONE	159.4425N	NONE	A
AIR TO GROUND	ZONE 2 / CH 14	166.6750N	NONE	166.6750N	NONE	A
AIR TO GROUND	ZONE 2 / CH 15	169.1500N	NONE	169.1500N	NONE	A
AIR GUARD	ZONE 2 / CH 16	168.6250N	NONE	168.6250N	110.9	A
<b>9. Prepared By (Resource Unit Leader)</b>			<b>Approved By (Planning Section Chief)</b>		<b>Date</b>	<b>Time</b>
PEECH KELLER			JOE BISHOP, PSC2 (T)		06/03/2017	1800



## Division/Group Assignment List (ICS 204 WF)

<b>1. Incident Name:</b>			<b>3.</b>			
WEST MIMS			<b>Branch:</b>		<b>Division/Group:</b>	
<b>2. Operational Period:</b> <b>DAY SHIFT 0730-1930</b>			<b>IV</b>		<b>Y</b>	
Date/Time From: 06/04/2017 0730                   SUN		Date/Time To: 06/04/2017 1930                   SUN				
<b>4. Operations Personnel</b>						
<b>OPERATIONS CHIEF</b>		TRENT INGRAM BLAIR JOINER (T)		<b>OPERATIONS CHIEF</b>		RICK DOLAN FRED BOEHM; BUTCH GALBRAITH (T)
<b>BRANCH DIRECTOR</b>		MICHAEL WORK 6/11 KAREN SCHOLL (T) 6/5		<b>DIVISION/GROUP SUPERVISOR</b>		RANDY GREGORY 6/11
<b>SAFETY</b>		LARRY CONNELL		<b>AIR TACTICAL GROUP SUPERVISOR</b>		MARK NUNEZ, KEN MCLAUGHLIN
<b>5. Resources Assigned this Period</b>						
Strike Team / Task Force / Resource Designator		LWD	Leader	Number Persons	Drop Off PT./Time	Pick Up PT./Time
TFLD O-797		06/11	JACOB ROBERT HOPPE	1	EAST CAMP/0730	EAST CAMP/1930
ENG3 CO-DRS DURANGO BRUSH 31 E-869		06/10	ALLEN R OTTMAN	4	EAST CAMP/0730	EAST CAMP/1930
ENG6 AR-OZF BM651 E-713		06/12	ROBERT JAMES	4	EAST CAMP/0730	EAST CAMP/1930
ENG6 BANKHEAD 611 E-654		06/08	JOHN EDWARD GARCIA	3	EAST CAMP/0730	EAST CAMP/1930
ENG6 KY-KYS 110 E-658		06/11	DENNIS WOOLARD	2	EAST CAMP/0730	EAST CAMP/1930
TFLD O-796		06/13	ANTHONY ARENDT	1	EAST CAMP/0730	EAST CAMP/1930
ENG6 SC-SRF 603 E-662		06/09	SHAUN DEASON	3	EAST CAMP/0730	EAST CAMP/1930
ENG6 KY-KYS 601 E-1006		06/14	DARREN L MORRIS	2	EAST CAMP/0730	EAST CAMP/1930
DO22 HASSELL 278967 E-858		07/01	KURT HALL	1	EAST CAMP/0730	EAST CAMP/1930
DO22 750K HASSELL 261627 E-530		07/01	JASON BOWEN	1	EAST CAMP/0730	EAST CAMP/1930
WTT1 HASSELL E-588		07/01	HUBERT HASSELL	1	EAST CAMP/0730	EAST CAMP/1930
HEQB O-644		06/05	TRENTON NEIL	1	EAST CAMP/0730	EAST CAMP/1930
DO22 VIN# 922092 E-584		07/01	JOHN SIMMONS	1	EAST CAMP/0730	EAST CAMP/1930
<b>8. Division/Group Communication Summary</b>						
Function	Channel	RX Frequency N/W	RX Tone/NAC	TX Frequency N/W	TX Tone/NAC	Mode
AIR TO GROUND	ZONE 2 / CH 4	169.2000N	NONE	169.2000N	NONE	A
COMMAND	ZONE 2 / CH 8	159.2700N	156.7	151.1000N	123.0	A
TACTICAL	ZONE 2 / CH 9	159.2850N	NONE	159.2850N	156.7	A
AIR TO GROUND	ZONE 2 / CH 14	166.6750N	NONE	166.6750N	NONE	A
AIR TO GROUND	ZONE 2 / CH 15	169.1500N	NONE	169.1500N	NONE	A
AIR GUARD	ZONE 2 / CH 16	168.6250N	NONE	168.6250N	110.9	A
<b>9. Prepared By (Resource Unit Leader)</b>			<b>Approved By (Planning Section Chief)</b>		<b>Date</b>	<b>Time</b>
PEECH KELLER			JOE BISHOP, PSC2 (T)		06/03/2017	1800

## Division/Group Assignment List (ICS 204 WF)

<b>1. Incident Name:</b>			<b>3.</b>			
WEST MIMS			<b>IV</b>		<b>Y</b>	
<b>2. Operational Period:</b> DAY SHIFT 0730-1930						
Date/Time From: 06/04/2017 0730      SUN		Date/Time To: 06/04/2017 1930      SUN				
<b>4. Operations Personnel</b>						
<b>OPERATIONS CHIEF</b>		TRENT INGRAM BLAIR JOINER (T)		<b>OPERATIONS CHIEF</b>		RICK DOLAN FRED BOEHM; BUTCH GALBRAITH (T)
<b>BRANCH DIRECTOR</b>		MICHAEL WORK 6/11 KAREN SCHOLL (T) 6/5		<b>DIVISION/GROUP SUPERVISOR</b>		RANDY GREGORY 6/11
<b>SAFETY</b>		LARRY CONNELL		<b>AIR TACTICAL GROUP SUPERVISOR</b>		MARK NUNEZ, KEN MCLAUGHLIN
<b>5. Resources Assigned this Period</b>						
Strike Team / Task Force / Resource Designator		LWD	Leader	Number Persons	Drop Off PT./Time	Pick Up PT./Time
TFLD O-652		06/14	LONNY HAGEDON	1	EAST CAMP/0730	EAST CAMP/1930
ENG6 KY-KYS 111 E-659		06/11	MICHAEL FROELICH	2	EAST CAMP/0730	EAST CAMP/1930
WTS1 357 PB 350505 HASSELL E-476		07/01	ROBERT EDENFIELD	1	EAST CAMP/0730	EAST CAMP/1930
GOAT 1 UTV PENDER LAND E-797		07/01	KEVIN CROOM	1	EAST CAMP/0730	EAST CAMP/1930
GOAT 2 UTV PENDER LAND E-798		07/01	THOMAS ENDICOTT	1	EAST CAMP/0730	EAST CAMP/1930
READ O-802		06/14	JOHN P DUNLAP	1	EAST CAMP/0730	EAST CAMP/1930
EMPF O-753		06/08	WADE ALLEN	1	EAST CAMP/0730	EAST CAMP/1930
SOF2 (T) O-408		06/08	ADAM HUMBACH (T)	1	EAST CAMP/0730	EAST CAMP/1930
SOF2 O-494		06/14	DARROLL K ABEYTA	1	EAST CAMP/0730	EAST CAMP/1930
<b>6. Control Operations/Work Assignments:</b>						
<b>Task</b>						
<ul style="list-style-type: none"> <li>• Respond to any new starts within the division.</li> <li>• Patrol and mop up fuels appropriate to fuel type and anticipated weather and fire behavior. Eliminate obvious smoke which will trigger unnecessary calls to 911 system.</li> </ul>						
<b>Purpose</b>						
<ul style="list-style-type: none"> <li>• Keep fire within established fire containment lines.</li> </ul>						
<b>End State</b>						
<ul style="list-style-type: none"> <li>• Fire is contained by adequate control line to reduce threat to escape; minimizing damage to private timberlands, private lands, and other resource values at risk.</li> </ul>						
<b>8. Division/Group Communication Summary</b>						
Function	Channel	RX Frequency N/W	RX Tone/NAC	TX Frequency N/W	TX Tone/NAC	Mode
AIR TO GROUND	ZONE 2 / CH 4	169.2000N	NONE	169.2000N	NONE	A
COMMAND	ZONE 2 / CH 8	159.2700N	156.7	151.1000N	123.0	A
TACTICAL	ZONE 2 / CH 9	159.2850N	NONE	159.2850N	156.7	A
AIR TO GROUND	ZONE 2 / CH 14	166.6750N	NONE	166.6750N	NONE	A
AIR TO GROUND	ZONE 2 / CH 15	169.1500N	NONE	169.1500N	NONE	A
AIR GUARD	ZONE 2 / CH 16	168.6250N	NONE	168.6250N	110.9	A
<b>9. Prepared By (Resource Unit Leader)</b>			<b>Approved By (Planning Section Chief)</b>		<b>Date</b>	<b>Time</b>
PEECH KELLER			JOE BISHOP, PSC2 (T)		06/03/2017	1800

## Division/Group Assignment List (ICS 204 WF)

<b>1. Incident Name:</b>			<b>3.</b>			
WEST MIMS			<b>Branch:</b>		<b>Division/Group:</b>	
<b>2. Operational Period:</b> <b>DAY SHIFT 0730-1930</b>			<b>IV</b>		<b>Y</b>	
Date/Time From: 06/04/2017 0730                    SUN		Date/Time To: 06/04/2017 1930                    SUN				
<b>4. Operations Personnel</b>						
<b>OPERATIONS CHIEF</b>		TRENT INGRAM BLAIR JOINER (T)		<b>OPERATIONS CHIEF</b>		RICK DOLAN FRED BOEHM; BUTCH GALBRAITH (T)
<b>BRANCH DIRECTOR</b>		MICHAEL WORK 6/11 KAREN SCHOLL (T) 6/5		<b>DIVISION/GROUP SUPERVISOR</b>		RANDY GREGORY 6/11
<b>SAFETY</b>		LARRY CONNELL		<b>AIR TACTICAL GROUP SUPERVISOR</b>		MARK NUNEZ, KEN MCLAUGHLIN
<b>6. Control Operations/Work Assignments:</b>						
<b>7. Special Instructions:</b>						
<p><b>Division Y will be working in St. George Zone.</b></p> <p>Ensure LCES is in place before operations begin and stay hydrated. Drive defensively and with lights on at all times. Identify escape routes. Bridge near DP 9 restricted to pickups - No engines. Bridge on swamp perimeter road just east of first Branch has steep drop offs - 1 lane travel - watch for barricades.</p> <p><b>Use caution when working around logging operations.</b></p> <p><b>For IA protocol see page 7</b></p> <p><b>Medical Emergency Channel: Command</b>  <b>ETA for Ambulance to Scene:</b>  <b>Air: 20 – 30 mins</b>  <b>Ground: 10 - 15 mins Paved roads only.</b>  <b>IWI – IC or approved person will use Channel 16 (Air Guard) for contact with air ambulance</b>  <b>Air Ambulance landing zone to be determined by IWI – IC</b>  <b>Utilize engines to provide dust abatement, as needed, prior to air ambulance landing</b></p>						
<b>8. Division/Group Communication Summary</b>						
Function	Channel	RX Frequency N/W	RX Tone/NAC	TX Frequency N/W	TX Tone/NAC	Mode
AIR TO GROUND	ZONE 2 / CH 4	169.2000N	NONE	169.2000N	NONE	A
COMMAND	ZONE 2 / CH 8	159.2700N	156.7	151.1000N	123.0	A
TACTICAL	ZONE 2 / CH 9	159.2850N	NONE	159.2850N	156.7	A
AIR TO GROUND	ZONE 2 / CH 14	166.6750N	NONE	166.6750N	NONE	A
AIR TO GROUND	ZONE 2 / CH 15	169.1500N	NONE	169.1500N	NONE	A
AIR GUARD	ZONE 2 / CH 16	168.6250N	NONE	168.6250N	110.9	A
<b>9. Prepared By (Resource Unit Leader)</b>			<b>Approved By (Planning Section Chief)</b>		<b>Date</b>	<b>Time</b>
PEECH KELLER			JOE BISHOP, PSC2 (T)		06/03/2017	1800

## Division/Group Assignment List (ICS 204 WF)

<b>1. Incident Name:</b>			<b>3.</b>			
WEST MIMS			<b>IV</b>		<b>Z</b>	
<b>2. Operational Period:</b> DAY SHIFT 0730-1930						
Date/Time From: 06/04/2017 0730      SUN		Date/Time To: 06/04/2017 1930      SUN				
<b>4. Operations Personnel</b>						
<b>OPERATIONS CHIEF</b>		TRENT INGRAM; BLAIR JOINER (T)		<b>OPERATIONS CHIEF</b>		
				RICK DOLAN FRED BOEHM; BUTCH GALBRAITH (T)		
<b>BRANCH DIRECTOR</b>		MICHAEL WORK 6/11 KAREN SCHOLL (T) 6/5		<b>DIVISION/GROUP SUPERVISOR</b>		
				JASON LONGFELLOW 6/11		
<b>SAFETY</b>		LARRY CONNELL		<b>AIR TACTICAL GROUP SUPERVISOR</b>		
				MARK NUNEZ, KEN MCLAUGHLIN		
<b>5. Resources Assigned this Period</b>						
Strike Team / Task Force / Resource Designator		LWD	Leader	Number Persons	Drop Off PT./Time	Pick Up PT./Time
TFLD O-817		06/13	DAMON NELSON	1	EAST CAMP/0730	EAST CAMP/1930
ENG6 WA-OLF 692 E-482		06/06	JODI STONE	4	EAST CAMP/0730	EAST CAMP/1930
ENG6 LEE 641 E-1008		06/12	JAMES E COLLETT	3	EAST CAMP/0730	EAST CAMP/1930
ENG6 361 E-775		06/05	DAVID T MARBERT	3	EAST CAMP/0730	EAST CAMP/1930
WTT2 FARRELL TIMBER VIN# 557261 E-410		07/01	DON WILSON	1	EAST CAMP/0730	EAST CAMP/1930
TFLD O-852		06/14	KENNY GAYNOR	1	EAST CAMP/0730	EAST CAMP/1930
ENG6 GFC4202239 E-1009		06/12	JAMES M. PEEBLES	2	EAST CAMP/0730	EAST CAMP/1930
ENG6 ACS29693 E-1013		06/12	KYLE BRADLEY	2	EAST CAMP/0730	EAST CAMP/1930
ENG6 GFC4201296 E-1010		06/12	RACHEL JEAN	2	EAST CAMP/0730	EAST CAMP/1930
WTT2 VIN# 009542 E-409		07/01	KELVIN HIBBARD	1	EAST CAMP/0730	EAST CAMP/1930
WTT2 VIN# 9250 E-574		07/01	TONY TIPTON	1	EAST CAMP/0730	EAST CAMP/1930
STEQ O-736		06/06	JEREMY CALLICUTT	1	EAST CAMP/0730	EAST CAMP/1930
TPL3 NC-NCS 3X77 E-568		06/06	JACK FRANKLIN	2	EAST CAMP/0730	EAST CAMP/1930
TPL3 NC-NCS 3X65 E-569		06/06	MARK ALLEN	2	EAST CAMP/0730	EAST CAMP/1930
<b>8. Division/Group Communication Summary</b>						
Function	Channel	RX Frequency N/W	RX Tone/NAC	TX Frequency N/W	TX Tone/NAC	Mode
AIR TO GROUND	ZONE 2 / CH 4	169.2000N	NONE	169.2000N	NONE	A
COMMAND	ZONE 2 / CH 8	159.2700N	156.7	151.1000N	123.0	A
TACTICAL	ZONE 2 / CH 10	168.3500N	NONE	168.3500N	NONE	A
AIR TO GROUND	ZONE 2 / CH 14	166.6750N	NONE	166.6750N	NONE	A
AIR TO GROUND	ZONE 2 / CH 15	169.1500N	NONE	169.1500N	NONE	A
AIR GUARD	ZONE 2 / CH 16	168.6250N	NONE	168.6250N	110.9	A
<b>9. Prepared By (Resource Unit Leader)</b>			<b>Approved By (Planning Section Chief)</b>		<b>Date</b>	<b>Time</b>
PEECH KELLER			JOE BISHOP, PSC2 (T)		06/03/2017	1800

## Division/Group Assignment List (ICS 204 WF)

<b>1. Incident Name:</b>			<b>3.</b>			
WEST MIMS			<b>IV</b>		<b>Z</b>	
<b>2. Operational Period:</b> DAY SHIFT 0730-1930						
Date/Time From: 06/04/2017 0730      SUN		Date/Time To: 06/04/2017 1930      SUN				
<b>4. Operations Personnel</b>						
<b>OPERATIONS CHIEF</b>		TRENT INGRAM; BLAIR JOINER (T)		<b>OPERATIONS CHIEF</b>		RICK DOLAN FRED BOEHM; BUTCH GALBRAITH (T)
<b>BRANCH DIRECTOR</b>		MICHAEL WORK 6/11 KAREN SCHOLL (T) 6/5		<b>DIVISION/GROUP SUPERVISOR</b>		JASON LONGFELLOW 6/11
<b>SAFETY</b>		LARRY CONNELL		<b>AIR TACTICAL GROUP SUPERVISOR</b>		MARK NUNEZ, KEN MCLAUGHLIN
<b>5. Resources Assigned this Period</b>						
Strike Team / Task Force / Resource Designator		LWD	Leader	Number Persons	Drop Off PT./Time	Pick Up PT./Time
READ O-802		06/14	JOHN P DUNLAP	1	EAST CAMP/0730	EAST CAMP/1930
EMPF E-314.2		06/06	JOHN HECK	1	EAST CAMP/0730	EAST CAMP/1930
SOF2 O-494		06/14	DARROLL K ABEYTA	1	EAST CAMP/0730	EAST CAMP/1930
<b>6. Control Operations/Work Assignments:</b>						
Task						
<ul style="list-style-type: none"> <li>• Respond to any new starts within the division.</li> <li>• Patrol and mop up fuels appropriate to fuel type and anticipated weather and fire behavior.</li> <li>• Rehabilitate contingency line.</li> </ul>						
Purpose						
<ul style="list-style-type: none"> <li>• Keep fire within established fire containment lines.</li> </ul>						
End State						
<ul style="list-style-type: none"> <li>• Fire is contained by adequate control line to reduce threat to escape; minimizing damage to private timberlands, private lands, and other resource values at risk.</li> </ul>						
<b>7. Special Instructions:</b>						
Division Z will be working in St. George Zone.						
Use caution when working around logging operations.						
Medical Emergency Channel: Command						
ETA for Ambulance to Scene:						
Air: 20 – 30 mins						
Ground: 10 - 15 mins Paved roads only.						
IW1 – IC or approved person will use Channel 16 (Air Guard) for contact with air ambulance						
Air Ambulance landing zone to be determined by IW1 – IC						
<b>8. Division/Group Communication Summary</b>						
Function	Channel	RX Frequency N/W	RX Tone/NAC	TX Frequency N/W	TX Tone/NAC	Mode
AIR TO GROUND	ZONE 2 / CH 4	169.2000N	NONE	169.2000N	NONE	A
COMMAND	ZONE 2 / CH 8	159.2700N	156.7	151.1000N	123.0	A
TACTICAL	ZONE 2 / CH 10	168.3500N	NONE	168.3500N	NONE	A
AIR TO GROUND	ZONE 2 / CH 14	166.6750N	NONE	166.6750N	NONE	A
AIR TO GROUND	ZONE 2 / CH 15	169.1500N	NONE	169.1500N	NONE	A
AIR GUARD	ZONE 2 / CH 16	168.6250N	NONE	168.6250N	110.9	A
<b>9. Prepared By (Resource Unit Leader)</b>			<b>Approved By (Planning Section Chief)</b>		<b>Date</b>	<b>Time</b>
PEECH KELLER			JOE BISHOP, PSC2 (T)		06/03/2017	1800

## Division/Group Assignment List (ICS 204 WF)

<b>1. Incident Name:</b>			<b>3.</b>			
WEST MIMS			<b>IV</b>	<b>Division/Group:  Z</b>		
<b>2. Operational Period:</b> DAY SHIFT 0730-1930						
Date/Time From: 06/04/2017 0730      SUN		Date/Time To: 06/04/2017 1930      SUN				
<b>4. Operations Personnel</b>						
<b>OPERATIONS CHIEF</b>	TRENT INGRAM; BLAIR JOINER (T)		<b>OPERATIONS CHIEF</b>	RICK DOLAN FRED BOEHM; BUTCH GALBRAITH (T)		
<b>BRANCH DIRECTOR</b>	MICHAEL WORK 6/11 KAREN SCHOLL (T) 6/5		<b>DIVISION/GROUP SUPERVISOR</b>	JASON LONGFELLOW 6/11		
<b>SAFETY</b>	LARRY CONNELL		<b>AIR TACTICAL GROUP SUPERVISOR</b>	MARK NUNEZ, KEN MCLAUGHLIN		
<b>7. Special Instructions:</b>						
Utilize engines to provide dust abatement, as needed, prior to air ambulance landing For IA protocol see page 7						
<b>8. Division/Group Communication Summary</b>						
Function	Channel	RX Frequency N/W	RX Tone/NAC	TX Frequency N/W	TX Tone/NAC	Mode
AIR TO GROUND	ZONE 2 / CH 4	169.2000N	NONE	169.2000N	NONE	A
COMMAND	ZONE 2 / CH 8	159.2700N	156.7	151.1000N	123.0	A
TACTICAL	ZONE 2 / CH 10	168.3500N	NONE	168.3500N	NONE	A
AIR TO GROUND	ZONE 2 / CH 14	166.6750N	NONE	166.6750N	NONE	A
AIR TO GROUND	ZONE 2 / CH 15	169.1500N	NONE	169.1500N	NONE	A
AIR GUARD	ZONE 2 / CH 16	168.6250N	NONE	168.6250N	110.9	A
<b>9. Prepared By (Resource Unit Leader)</b>			<b>Approved By (Planning Section Chief)</b>		<b>Date</b>	<b>Time</b>
PEECH KELLER			JOE BISHOP, PSC2 (T)		06/03/2017	1800

## Division/Group Assignment List (ICS 204 WF)

<b>1. Incident Name:</b>			<b>3.</b>			
WEST MIMS			<b>Branch:</b>		<b>Division/Group:</b>	
<b>2. Operational Period:</b> DAY SHIFT 0730-1930			<b>ROAD MAINT</b>		<b>ROAD MAINT</b>	
Date/Time From: 06/04/2017 0730      SUN		Date/Time To: 06/04/2017 1930      SUN				
<b>4. Operations Personnel</b>						
<b>PLANNING OPERATIONS CHIEF</b>		TRENT INGRAM BLAIR JOINER (T) 6/9		<b>OPERATIONS CHIEF</b>		
				RICK DOLAN; FRED BOEHM BUTCH GALBRAITH (T) 6/11		
<b>BRANCH DIRECTOR</b>		BOB LITTLE 6/9		<b>DIVISION/GROUP SUPERVISOR</b>		
				JEROMY WILSON 6/10		
<b>SAFETY</b>		LARRY CONNELL		<b>AIR TACTICAL GROUP SUPERVISOR</b>		
				MARK NUNEZ KEN MCLAUGHLIN		
<b>5. Resources Assigned this Period</b>						
Strike Team / Task Force / Resource Designator		LWD	Leader	Number Persons	Drop Off PT./Time	Pick Up PT./Time
TFLD O-794		06/11	MICHAEL KOLB	1	EAST CAMP/0730	EAST CAMP/1930
EXCA V# 500242 E-626		07/01	CRAIG CLOUD	1	EAST CAMP/0730	EAST CAMP/1930
TDMP VIN# 54083 E-624		07/01	BILLY LEE	1	EAST CAMP/0730	EAST CAMP/1930
TDMP VIN# 64094 E-625		07/01	JOE GRINER	1	EAST CAMP/0730	EAST CAMP/1930
TDMP CORNELIUS #17006 E-879		07/01	JOSEPH GRINER	1	EAST CAMP/0730	EAST CAMP/1930
TDMP CORNELIUS #633987 E-880		07/01	ANDY JOHNS	1	EAST CAMP/0730	EAST CAMP/1930
TDMP CORNELIUS E-937		07/01	DAVID GARNER	1	EAST CAMP/0730	EAST CAMP/1930
TDMP CORNELIUS E-938		07/01	JOSEPH JOHNSON	1	EAST CAMP/0730	EAST CAMP/1930
TDMP CORNELIUS E-939		07/01	EDDIE JOHNSON	1	EAST CAMP/0730	EAST CAMP/1930
TDMP CORNELIUS E-940		07/01	RONALD NUTTY	1	EAST CAMP/0730	EAST CAMP/1930
TFLD O-793		06/10	BRENT SAWYER	1	EAST CAMP/0730	EAST CAMP/1930
GRD2 WFS 6198TE E-136		07/01	JUSTIN BARBER	1	EAST CAMP/0730	EAST CAMP/1930
GRD2 CORNELIUS FARMS E-941		07/01	JAMES COWAN		EAST CAMP/0730	EAST CAMP/1930
EXCA T3 VIN# GXHFE E-622		07/01	BUCK TODDENBERRY	1	EAST CAMP/0730	EAST CAMP/1930
DOZ3 VIN# 302873 E-623		07/01	KELLY PITTMAN	1	EAST CAMP/0730	EAST CAMP/1930
<b>8. Division/Group Communication Summary</b>						
Function	Channel	RX Frequency N/W	RX Tone/NAC	TX Frequency N/W	TX Tone/NAC	Mode
COMMAND	ZONE 2 / CH 3	159.1200N	NONE	151.3700N	82.5	A
COMMAND	ZONE 2 / CH 8	159.2700N	156.7	151.1000N	123.0	A
AIR TO GROUND	ZONE 2 / CH 4	169.2000N	NONE	169.2000N	NONE	A
TACTICAL	ZONE 2 / CH 10	168.3500N	NONE	168.3500N	NONE	A
AIR TO GROUND	ZONE 2 / CH 14	166.6750N	NONE	166.6750N	NONE	A
AIR TO GROUND	ZONE 2 / CH 15	169.1500N	NONE	169.1500N	NONE	A
AIR GUARD	ZONE 2 / CH 16	168.6250N	NONE	168.6250N	110.9	A
<b>9. Prepared By (Resource Unit Leader)</b>			<b>Approved By (Planning Section Chief)</b>		<b>Date</b>	<b>Time</b>
FRED NOACK			JOE BISHOP, PSC2 (T)		06/03/2017	1800

## Division/Group Assignment List (ICS 204 WF)

<b>1. Incident Name:</b>			<b>3.</b>			
WEST MIMS			<b>Branch:</b>		<b>Division/Group:</b>	
<b>2. Operational Period:</b> DAY SHIFT 0730-1930			<b>ROAD MAINT</b>		<b>ROAD MAINT</b>	
Date/Time From: 06/04/2017 0730      SUN		Date/Time To: 06/04/2017 1930      SUN				
<b>4. Operations Personnel</b>						
<b>PLANNING OPERATIONS CHIEF</b>		TRENT INGRAM BLAIR JOINER (T) 6/9		<b>OPERATIONS CHIEF</b>		RICK DOLAN; FRED BOEHM BUTCH GALBRAITH (T) 6/11
<b>BRANCH DIRECTOR</b>		BOB LITTLE 6/9		<b>DIVISION/GROUP SUPERVISOR</b>		JEROMY WILSON 6/10
<b>SAFETY</b>		LARRY CONNELL		<b>AIR TACTICAL GROUP SUPERVISOR</b>		MARK NUNEZ KEN MCLAUGHLIN
<b>5. Resources Assigned this Period</b>						
Strike Team / Task Force / Resource Designator		LWD	Leader	Number Persons	Drop Off PT./Time	Pick Up PT./Time
GRD2 MOORE'S QUALITY EARTHMOVING E-641		07/01	ERIC MOORE	2	EAST CAMP/0730	EAST CAMP/1930
TFLD O-618		06/05	KRIS CRODDY	1	EAST CAMP/0730	EAST CAMP/1930
HEQB O-547		06/12	RODNEY HELZER	1	EAST CAMP/0730	EAST CAMP/1930
GRD2 R.O.T. RANCH E-234		07/01	ROBBY WORRELL	1	EAST CAMP/0730	EAST CAMP/1930
GRD2 R.O.T. RANCH E-639		07/01	WESLEY WOOD	1	EAST CAMP/0730	EAST CAMP/1930
GRD CORNELIUS E-942		07/01	DANNY THRIFT	1	EAST CAMP/0730	EAST CAMP/1930
WTS2 HOME STYLE E-644		07/01	BRIAN DURAN	1	EAST CAMP/0730	EAST CAMP/1930
WTD2 VIN# Z73020 FFD E-746		07/01	DANNIE YOUMANS	1	EAST CAMP/0730	EAST CAMP/1930
READ O-802		06/14	JOHN P DUNLAP	1	EAST CAMP/0730	EAST CAMP/1930
<b>6. Control Operations/Work Assignments:</b>						
<b>Task</b>						
<ul style="list-style-type: none"> <li>• Assess access roads to fire perimeter; repair or maintain as necessary in accordance with priority list provided by Operations Section Chief.</li> <li>• Provide adequate signage for traffic safety.</li> <li>• Assess single lane bridges and culverts for safety and maintenance needs.</li> </ul>						
<b>Purpose</b>						
<b>8. Division/Group Communication Summary</b>						
Function	Channel	RX Frequency N/W	RX Tone/NAC	TX Frequency N/W	TX Tone/NAC	Mode
COMMAND	ZONE 2 / CH 3	159.1200N	NONE	151.3700N	82.5	A
COMMAND	ZONE 2 / CH 8	159.2700N	156.7	151.1000N	123.0	A
AIR TO GROUND	ZONE 2 / CH 4	169.2000N	NONE	169.2000N	NONE	A
TACTICAL	ZONE 2 / CH 10	168.3500N	NONE	168.3500N	NONE	A
AIR TO GROUND	ZONE 2 / CH 14	166.6750N	NONE	166.6750N	NONE	A
AIR TO GROUND	ZONE 2 / CH 15	169.1500N	NONE	169.1500N	NONE	A
AIR GUARD	ZONE 2 / CH 16	168.6250N	NONE	168.6250N	110.9	A
<b>9. Prepared By (Resource Unit Leader)</b>			<b>Approved By (Planning Section Chief)</b>		<b>Date</b>	<b>Time</b>
FRED NOACK			JOE BISHOP, PSC2 (T)		06/03/2017	1800



## Division/Group Assignment List (ICS 204 WF)

<b>1. Incident Name:</b>			<b>3.</b>			
WEST MIMS			<b>Branch:</b>		<b>Division/Group:</b>	
<b>2. Operational Period:</b> DAY SHIFT 0730-1930			<b>ROAD MAINT</b>		<b>ROAD MAINT</b>	
Date/Time From: 06/04/2017 0730      SUN		Date/Time To: 06/04/2017 1930      SUN				
<b>4. Operations Personnel</b>						
<b>PLANNING OPERATIONS CHIEF</b>		TRENT INGRAM BLAIR JOINER (T) 6/9		<b>OPERATIONS CHIEF</b>		RICK DOLAN; FRED BOEHM BUTCH GALBRAITH (T) 6/11
<b>BRANCH DIRECTOR</b>		BOB LITTLE 6/9		<b>DIVISION/GROUP SUPERVISOR</b>		JEROMY WILSON 6/10
<b>SAFETY</b>		LARRY CONNELL		<b>AIR TACTICAL GROUP SUPERVISOR</b>		MARK NUNEZ KEN MCLAUGHLIN
<b>6. Control Operations/Work Assignments:</b>						
<ul style="list-style-type: none"> <li>• To keep adequate vehicular access to the fire perimeter.</li> </ul> <b>End State</b> <ul style="list-style-type: none"> <li>• Access roads are in a safe and travel worthy condition.</li> </ul>						
<b>7. Special Instructions:</b>						
<p>Check in and out with Division Supervisor when moving between divisions.          Medical Emergency Channel: Command          ETA for Ambulance to Scene:          Air: 20-30 mins          Ground: 10-15 mins Paved road only.          IWI - IC or approved person will use Channel 16 (Air Guard) for contact with air ambulance.          Air Ambulance landing zone to be determined by IWI - IC.          Utilize engines to provide dust abatement, as needed, prior to air ambulance landing.</p>						
<b>8. Division/Group Communication Summary</b>						
Function	Channel	RX Frequency N/W	RX Tone/NAC	TX Frequency N/W	TX Tone/NAC	Mode
COMMAND	ZONE 2 / CH 3	159.1200N	NONE	151.3700N	82.5	A
COMMAND	ZONE 2 / CH 8	159.2700N	156.7	151.1000N	123.0	A
AIR TO GROUND	ZONE 2 / CH 4	169.2000N	NONE	169.2000N	NONE	A
TACTICAL	ZONE 2 / CH 10	168.3500N	NONE	168.3500N	NONE	A
AIR TO GROUND	ZONE 2 / CH 14	166.6750N	NONE	166.6750N	NONE	A
AIR TO GROUND	ZONE 2 / CH 15	169.1500N	NONE	169.1500N	NONE	A
AIR GUARD	ZONE 2 / CH 16	168.6250N	NONE	168.6250N	110.9	A
<b>9. Prepared By (Resource Unit Leader)</b>			<b>Approved By (Planning Section Chief)</b>		<b>Date</b>	<b>Time</b>
FRED NOACK			JOE BISHOP, PSC2 (T)		06/03/2017	1800

# AIR OPERATIONS SUMMARY (ICS220)

Prepared by: John Bragg

Prepared Date: 6/3/2017

Prepared Time: 17:00

<b>1. INCIDENT NAME:</b> West Mims	<b>2. OPS PERIOD DATE:</b> 6/04/17	<b>START TIME:</b> 0800	<b>END TIME:</b> 2030	<b>SUNRISE:</b> 0625	<b>SUNSET TIME:</b> 2028 (Folkston)
<b>3. REMARKS Safety Notes: Hazards (SEE AND AVOID GENERAL AVIATION TRAFFIC AND AERIAL HAZARDS)</b> -Maintain clear communications; confirm that drop location is clear; ground personnel state: "Clear to Drop" -Incident Aircraft conduct flight following with Pogo Helibase when ATGS is not up. -Aerial Ignition Group: Helicopter 1FW with PLDO; FIRB, Jon King. -CEASE ALL FIRE OPERATIONS AT SUNSET -ALL AIRCRAFT SQUAWK 1255  <b>ORDERING/FLIGHT REQUESTS</b> -Request Helicopter water drops through Air Attack -Request Tankers/Retardant through Air Attack -Requests for Reconnaissance missions must go through Operations for pre-approval  <b>E-MAIL AIRCRAFT COSTS DAILY AT END OF SHIFT TO: al_d2011@yahoo.com</b>			<b>4. READY ALERT AIRCRAFT:</b>  N-350MW (Pogo)		<b>5. TFR: (A-160)</b> 7/1205; Surface to 3500' MSL; See NOTAM for full description. Frequency 120.8500 Expires 6/06/17 @ 2100hrs.

6. PERSONNEL	NAME	PHONE #	7. FREQUENCIES	AM	FM	8. FIXED-WING- Type/ Make-Model/ N#/ Base
AOBD	John Bragg	423-483-2798	A/A - Fixed Wing (A-17)	120.3500		ATGS - AC690 / N690RA / LCQ (A-60) Boo Walker 936-544-0348
	Air Ops Desk	912-637-5133	A/A - Rotor / TFR (A-37)	120.8500		
ASGS	Al Driesbach	805-703-0649	A/G (Request) (A-111)		169.2000	ATGS - Kodiak / N420Q / LCQ (A-62) Ron Rucker 541-550-6223
			A/G 66 (Primary) (A-5)		166.6750	
			A/G 72 (Secondary) (A-16)		169.1500	MMA --Pilatus12 /N328SF/VQQ (A-162) Craig Hall 970-799-1231
HEB2 - Pogo	Pat Mahoney	720-280-1209	Deck/TOLC (Pogo)		168.0500	TANKERS - As available
HEB2(T) - Pogo	Clinton Agidius	208-691-0155	Deck (Lake City)		163.100	(T-164) RJ-85A / N374AC / LCQ (Off Thursdays)
HEB1 - Lake City	Brad Nelson (FICC)	559-349-6793				
	Pogo Helibase (3GE1)	912-496-4415				
	Lake City Helibase (LCQ)	561-512-6333	Air Guard		168.625 (110.9)	

**9. HELICOPTER** Remarks Box Legend: C=Cargo P=Passengers B=Bucket SN=Snorkel R=Rappel H=Hoist SH=Short Haul ME=Medical Evacuation/ Extraction Exu=Exclusive Use

FAA N#	T	A#	MAKE/ MODEL	BASE	START	READY to FLY	REMARKS	FAA N#	T	A#	MAKE/ MODEL	BASE	START	READY to FLY	REMARKS
350MW	3	164	AS350 B3E	Pogo (3GE1)	0800	0830	P, B, Exu	136BH	1	163	S70A-27	Lake City	0800	0830	B Exu
351FW	3	90	AS350 B2	Pogo (3GE1)	0800	0830	P, B Exu	471CH	1	83	CH-47D	Lake City	0800	0830	SN Exu
611CK	1	20	SH-3H / S-61	Lake City	0800	0830	SN Exu	472CH	1		CH-47D	Lake City		0900	SN *On Loan

**10. Mission Request**

MMA-1000hrs, IR

# INCIDENT RADIO COMMUNICATIONS PLAN (ICS 205)

<b>1. Incident Name:</b>	<b>2. Date/Time Prepared:</b>	<b>3. Operational Period: DAY SHIFT 0730-1930</b>	
WEST MIMS	Date: 06/03/2017 Time: 0920	Date/Time From: 06/04/2017 0730      SUN	Date/Time To: 06/04/2017 1930      SUN

**4. Basic Radio Channel Use:**

Zone Group	Ch #	Function	Channel Name/Trunked Radio System Talkgroup	Assignment	RX Freq	RX Tone/NAC	TX Freq	TX Tone/NAC	Mode (A,D, or M)	Remarks
1 WEST	1	COMMAND	WEST OKEE REP		167.1250N	156.7	163.1500N	156.7	M	STEPHEN FOSTER STATE PARK
1 WEST	2	COMMAND	S. FOSTER		159.1200N	NONE	151.3700N	100.0	A	
1 EAST	3	COMMAND	CORNELIA		159.1200N	NONE	151.3700N	82.5	A	
1 ALL DIVISIONS	4	AIR TO GROUND	A/G REQUEST	ALL DIVISIONS	169.2000N	NONE	169.2000N	NONE	A	
1	5	COMMAND	GFC EDDY	GA FORESTRY	159.4650N	NONE	151.1450N	123.0	A	GA FORESTRY ONLY
1	6	TACTICAL	GFC TAC 1		159.3900N	NONE	159.3900N	156.7	A	
1	7	TACTICAL	V FIRE 26		154.3025N	NONE	154.3025N	156.7	A	
1	8	TACTICAL	OSCEOLA PROJECT		163.7125N	NONE	163.7125N	NONE	A	
1	9	TACTICAL	SE COMPACT		159.2850N	NONE	159.2850N	156.7	A	
1	10	TACTICAL	REFUGE TAC 1		168.3500N	NONE	168.3500N	NONE	A	
1	11	TACTICAL	REFUGE TAC 2		163.1000N	NONE	163.1000N	NONE	A	
1	12	TACTICAL	FFS 199		159.4425N	NONE	159.4425N	NONE	A	
1 WEST	13	TACTICAL	FFS 200		159.4125N	NONE	159.4125N	NONE	A	
1 ALL DIVISIONS	14	AIR TO GROUND	AIR TO GRD 66	A/G PRIMARY	166.6750N	NONE	166.6750N	NONE	A	AIR TO GROUND PRIMARY
1 ALL DIVISIONS	15	AIR TO GROUND	AIR TO GRD 72	A/G SECONDARY	169.1500N	NONE	169.1500N	NONE	A	AIR / GROUND SECONDARY
1 ALL DIVISIONS	16	AIR GUARD	AIR GUARD	ALL DIVISIONS	168.6250N	NONE	168.6250N	110.9	A	EMERGENCY AIRCRAFT COMMUNICATIONS

**5. Special Instructions:**

<b>6. Prepared By</b> (Communications Unit Leader)	Name: PAUL NOA, COML-T	Signature:
<b>ICS 205</b>	<b>IAP Page</b>	Date/Time: 06/03/2017 0920

### Telephone lines at ICP

<b>Information/PIO</b>	912-637-5132
<b>Information</b>	912-637-5108
<b>Air Ops</b>	912-637-5133
<b>Ordering</b>	912-637-5107
<b>Ordering</b>	912-637-5136
<b>Ordering FAX</b>	912-637-5104
<b>Supply</b>	912-637-5138
<b>Ground Support</b>	912-637-5105
<b>Finance</b>	912-637-5109
<b>Finance FAX</b>	912-637-5110
<b>Operations</b>	912-637-5112
<b>Plans FAX</b>	912-637-5115
<b>Plans / Checkin</b>	912-637-5137
<b>Demob</b>	912-637-5113
<b>Communications</b>	912-637-5116

### Telephone lines at Eastside Camp

<b>Operations</b>	912-496-2278
<b>Operations FAX</b>	912-496-3115
<b>Supply</b>	912-496-3116
<b>Supply FAX</b>	912-496-3122
<b>Ground Support</b>	912-496-3407
<b>Logistics</b>	912-496-2293
<b>Medical</b>	912-496-2289

Last Update: 5/30/2017

# HEALTH AND SAFETY MESSAGE

*SAFETY* starts with *YOU*

*LIFE FIRST --- MUST be our goal!*

**INCIDENT:** West Mims Fire

**DATE:** 06/04/2017 0730-1930

**Fatigue  
Communications  
Driving**

## Narrative:

Remember, that fatigue and complacency are common denominators on fatality and serious injury fires. Take a moment to review the *Risk Management Process (IRPG, Page 1)* and the *Medical Plan (IAP, ICS 206)*.

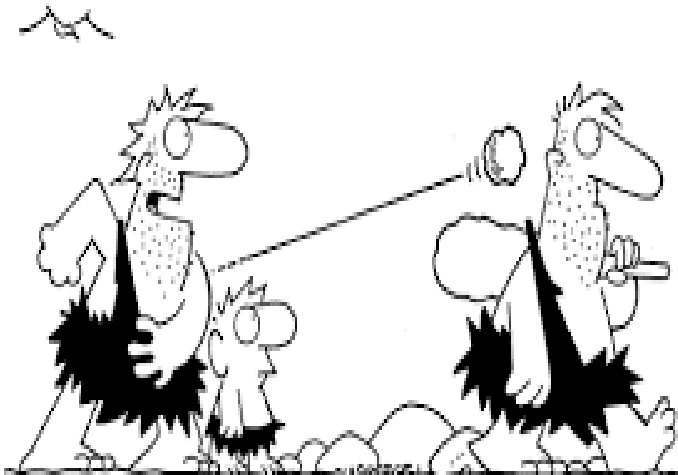
Communications should be a recurring topic. Take a moment to discuss alternate lines of communication. *What are your options?* Continue to engage *Life First*;

**STOP, THINK, TALK, BEFORE ACTING!!!**

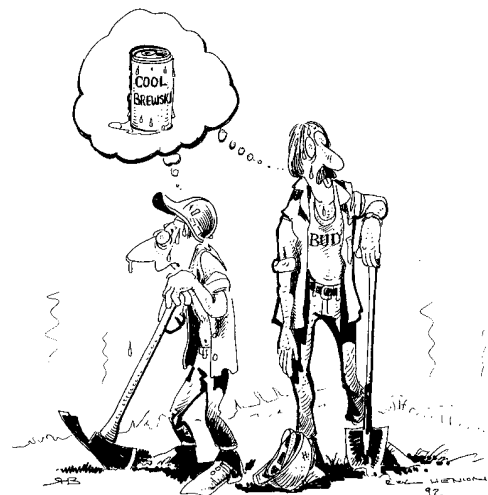
Drive Defensively! Some areas are becoming more congested with traffic. Be Pro-Active in developing traffic mitigation plans. **THINK**; Are alternate routes available, do I have any distractions, do I have my headlights and seatbelt on.

Safety is everyone's responsibility: ***IF YOU SEE SOMETHING SAY SOMETHING!***

© 2000 Randy Glasbergen. www.glasbergen.com



"WHEN YOU WANT TO GET SOMEBODY'S ATTENTION,  
THROW A ROCK AT HIS HEAD. IT'S THE LATEST  
THING IN WIRELESS COMMUNICATION!"



14. WEATHER IS GETTING HOTTER AND  
DRIER



## Human Resource Message

### “Attitude”

The longer I live, the more I realize the impact of attitude on my life.

Attitude is more important than facts.

Sometimes it is more important than education, than money, than circumstances, than failures, than successes, than what other people think or say or do.

It will make or break a person, a business or a home.

The remarkable thing is we have a choice every day regarding the attitude we will embrace for that day.

The only thing we can do is play on the one string we have, and that is our attitude.

“I am convinced that life is **10%** what happens to me, and **90%** how I react to it. And so it is with you. You are in charge of your attitude.” ~ Anonymous ~

### Thought of the Day

“A bad attitude is like a flat tire, you can’t go anywhere until you change it.”

Incident Human Resource Specialist: Larry Sandoval  
Incident: West Mims Fire

# MEDICAL PLAN (ICS 206 WF)

1. Incident/Project Name			2. Operational Period					
West Mims Fire			Date/Time <b>6/4/17 0730 - 1930</b>					
3. Ambulance Services								
Name	Complete Address		Phone		Advanced Life Support (ALS)			
					Yes	No		
Clinch County EMS	1050 Valdosta Hwy Homerville Ga		229-569-9280		YES			
Golden Isle EMS	210 West Park Ave. Valdosta Ga		229-300-0619		YES			
Okefenokee EMS	611 Riverside Ave. Waycross Ga		912-288-5703		YES			
4. Air Ambulance Services								
Name	Phone		Type of Aircraft & Capability					
Air Methods	888-763-1010		AS 350 with night vision capabilities					
Air Evac	888-269-6006		206 L4 + with night vision capabilities					
Trauma 1	800-223-4878		Bell 407 & EC145 both with night vision capabilities					
5. Hospitals								
Name Complete Address	GPS Datum – WGS 84 Coordinate Standard Degrees Decimal Minutes DD° MM.MMM' N - Lat DD° MM.MMM' W - Long		Travel Time		Phone	Helipad		Level of Care Facility
	Lat:	Long:	Air	Gnd		Yes	No	
Memorial Satilla Health 1900 Teveau St. Waycross GA 31501	N 31° 13.452	W 82° 20.875	15 mins	45 mins	912-283-3030	<input checked="" type="checkbox"/>	<input type="checkbox"/>	Level III
Clinch Memorial 1050 Valdosta Hwy Homerville Ga 31634	N 31° 01.975	W 82° 45.850	20 mins	30 mins	912-487-5211	<input checked="" type="checkbox"/>	<input type="checkbox"/>	Level IV
Ed Frazier Hospital N. 3 <sup>rd</sup> Street MacClenny Fl 32036	N 30° 28.482	W 82° 11.896	15 mins	45 mins	904-259-3151	<input checked="" type="checkbox"/>	<input type="checkbox"/>	Level IV
Shands Jacksonville 655 West 8 <sup>th</sup> Street Jacksonville Fl 32209	N 30° 20.890	W 81° 39.862	45 mins	90 mins	904-224-0411	<input checked="" type="checkbox"/>	<input type="checkbox"/>	Level I Trauma Center
UF Shands Burn Center 1600 SW Archer Rd. Gainesville Fl 32610	N 29° 38.648	W 82° 21.189	45 mins	105 mins	352-265-8932	<input checked="" type="checkbox"/>	<input type="checkbox"/>	Burn Center
<b>IWI IC Responsibilities:</b>								
<ul style="list-style-type: none"> <li>-Take charge of the scene – inform the Division Supervisor and Communications that you are the IWI IC and establish radio communications</li> <li>-Assign or begin patient assessment (9 Line) and first aid.</li> <li>-Determine patient transportation through consultation with line medical personnel and Medical Unit Leader.</li> <li>-Order transportation resources through Communications as early as possible.</li> <li>-Notify Communications as resources arrive and any patient status changes.</li> <li>-Names of injured or deceased individuals will not be transmitted on the radio.</li> <li>-Initiate documentation for future investigation; if a line safety officer is available, assign them to lead documentation.</li> <li>-Conduct an After Action Review to determine successes, areas to improve and lessons learned</li> </ul>								

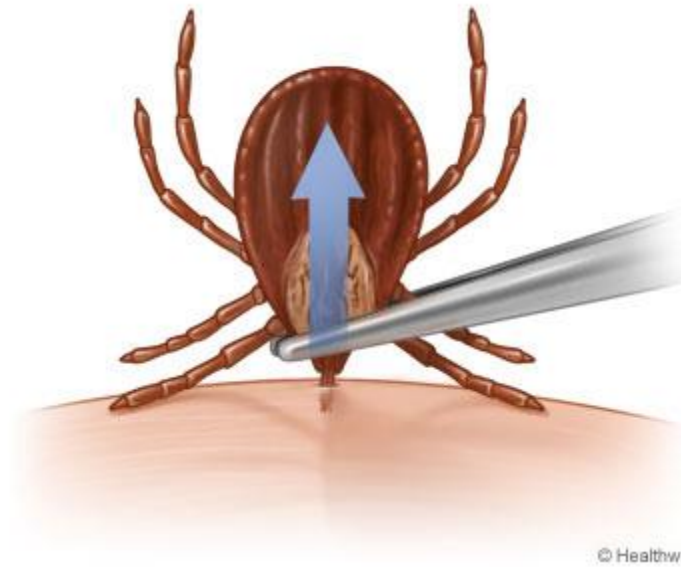
## MEDICAL PLAN (ICS 206 WF)

6. Division   Branch   Group	
<b>DAY MEDIC</b>	
Division A - Martin Carrillo-EMPF	619-933-5546-Channel-8 COMMAND
Division B – Coby Saurey-EMPF	470-366-6302-Channel-8-COMMAND
Division C - Colin Stenhouse EMPF	470-366-6308-Channel-8-COMMAND
Division D - Rodney Schmidt EMPF	470-366-6317-Channel-2-COMMAND
Division M/N - Stephen Wolfstich- EMPF	520-508-9807-Channel-3-COMMAND
Division O - Bryan Warner- EMPF	470-366-6263-Channel-3-COMMAND
Division Y – Wade Allen - EMPF	928-240-0106-Channel -8-COMMAND
Division Z – John Heck - EMPF	602-571-2505-Channel -8-COMMAND
<b>Medical Station WEST</b>	
MEDL office – Jill Hempelman- EMPF	623-986-1587
<b>Medical Station EAST</b>	
MEDL Station – Kathy Nemmers- EMPF	602-885-3115
<b>Branch I</b>	
Clinch County EMS Ambulance – ALS - 0730-1930	470-532-8806
<b>Branch III</b>	
Golden Isle Ambulance – ALS - 0730-1930	912-602-9224
<b>Branch IV</b>	
Okefenokee EMS Ambulance – ALS - 0730-1930	470-532-8797

7. Prepared By (Medical Unit Leader)	8. Date/Time	9. Reviewed By (Safety Officer)	10. Date/Time
Stephen Russo MEDL (917) 923 3980 West Medical Travis McGowen MEDL (T) 470-532-8809 East Medical Brad Burns MEDL (T) 470-366-6318	6/3/17	Larry Grubbs SOF1 850-228-7755	6/3/17



## How to remove a tick Safely



© Healthwise, Incorporated

Use fine-tipped tweezers to remove a tick. If you don't have tweezers, put on gloves or cover your hands with tissue paper, then use your fingers. Do not handle the tick with bare hands.

- Grab the tick as close to its **mouth** (the part that is stuck in your skin) as you can. The body of the tick will be above your skin.
- Do not grab the tick around its swollen belly. You could push infected fluid from the tick into your body if you squeeze it.
- Gently pull the tick straight out until its **mouth** lets go of your skin. Do not twist the tick. This may break off the tick's body and leave the head in your skin.
- Put the tick in a dry jar or ziplock bag and save it in the freezer for later identification if needed.

After the tick has been removed, wash the area of the tick bite with a lot of warm, clean water. Be sure to **wash your hands** well with soap and water also.

**NOTE:** If you can't remove a tick, call your doctor.

You may cover the wound with a thin layer of petroleum jelly, such as Vaseline, and a nonstick bandage. Apply more petroleum jelly and replace the bandage as needed.

## WEST MIMS FIRE - RESTAURANT SERVICE

Last Update: Tuesday, May 31, 2017

Breakfast \$11.00 Lunch \$12.00 Dinner \$23.00

### Valdosta:

- Waffle House (S193) – 1819 W. Hill Dr., Valdosta, GA 31601 (229) 834-4907
- Cracker Barrel – 1195 St. Augustine Rd., Valdosta, GA (229) 244-5258
- Sonny's BBQ -1701 Norman Dr., Valdosta, GA (229)241-8090 (Mon.-Thurs. 11:00 a.m.-9:30 p.m.) (Fri.-Sun. 11:00 a.m.-10.00 p.m.)
- Longhorn Steakhouse – 1110 N. St. Augustine Rd. (229) 333-0100 (Sun. – Thurs. 11:00 a.m. – 10:00 p.m.) (Fri. – Sat. 11:00 a.m. – 11:00 p.m.)

### Fargo:

- Suwannee River Outfitters (S117) - P.O. Box 94 Fargo, Ga 31631  
Store# (912) 637-5114 Bonnie Griffis (Owner) Cell# (229)460-6465
- Suwannee River Café (S118) - 190 Day Ave Fargo, GA 31631  
Store# (912) 637-5307 Lorene Odom (Owner)

### Lake City:

- Waffle House (S940) – 3639 W. US Hwy. 90 Lake City, FL 32055  
Store# (385) 755-9066, Marilyn (Manager) (386) 344-2365
- Waffle House (S976) – 2963 W. US Hwy. 90 Lake City, FL 32055 Store# (386) 752-7742
- Huddle House (S1333) – Store# (386) 466-1144
- Sonny's BBQ – 3177 W. Hwy. 90, Lake City, FL 32055 (386) 752-1117
- Texas Roadhouse – 3039 W. Hwy. 90, Lake City, FL 32055 (386) 758-0074. (Sun.-Thurs. 11:00 a.m.-10:00 pm) (Fri.-Sat. 11:00 a.m.-11:00 pm)

### Kingsland:

- Waffle House (S951) – 1201 East Kind Avenue, Kingsland, GA 31548  
Store # (912) 729-5690 Allen Newcomb (Manager) (770) 330-4446
- Cracker Barrel – 1200 Boone Ave. (912) 576-1991 (Sun.-Thurs. 6:00 a.m. – 10:00 p.m.)(Fri. – Sat. 6:00 a.m. – 11:00 p.m.)
- Longhorn Steakhouse – 121 Crown Pointe Pkwy. (912) 576-2811 (Sun. – Thurs. 11:00 a.m. – 10:00 p.m.) (Fri. – Sat. 11:00 a.m. – 11:00 p.m.)
- Applebee's 113 Lakes Blvd., Kingsland, GA (912) 729-9515 (Sun – Tues. 11:00 a.m. – 12:00 p.m.) (Wed. – Sat. 11:00 a.m. – 1:00 p.m.)

### Waycross:

- Huddle House (S977) - 1010 Memorial Drive Waycross, GA 31501  
Store# (912) 490-4353
- Hog-n-Bones – 1900 Memorial Drive, Waycross, GA 31501 (912) 285-3657 (Mon. –Sat. 6:00 a.m.-9:00 p.m.) Closed Sundays
- Applebee's – 1901 Memorial Dr. (912) 285-9359 (Sun. – Thurs. 11:00 a.m. - 10:00 p.m.) (Sat. – Sun 11:00 a.m. – 11:00 p.m.)

### Homerville:

- Jerry J's (S716) – 89 E. Dame Avenue, Homerville, Ga 31634  
Store# (912) 487-2232 Richard Crosby (Owner) (912) 286-6720
- Carters Fried Chicken (S741) – 277 Lakeview Drive Homerville, GA 31634  
Store# (312) 487-2700 Lena Fitzgerald (912) 487-8402 Jeff Brown (912) 487-8004

### Folkston:

- Okefenokee Adventures (S593) – 4159 Suwannee Canal Rd., Folkston, GA 31537  
Store# (912) 496-7156 (temporarily closed)
- Okefenokee Restaurant (S596) – 1507 3<sup>rd</sup> Street, Folkston, Ga 31537  
Store# (912) 496-3263 (Mon.-Sat. 7:00 a.m.-9:00 p.m.) Closed Sundays.
- Quick Chick (S595) – 107 2<sup>nd</sup> Street, Folkston, GA 31537 Store# (912) 496-7044 (Mon.-Sat. 10:00 a.m.-8:30 p.m.) Closed Sundays.

### Macclenny, FL:

- Chicken Coop 457 W. Macclenny Ave. (904) 259-3200 (Mon. – Wed. 11:00 a.m. – 8:00 p.m.) (Thurs. – Fri. 11:00 a.m. – 9:00 p.m.) (Closed Sat. & Sun.)
- Woody's Bar-B-Q 1482 S. 6<sup>th</sup> St. (904) 259-5800 (Fri. – Sat. 11:00 a.m. – 11:00 p.m.) (Sun. 11:00 a.m. – 9:00 p.m.) (Mon. – Thurs. 11:00 a.m. – 10:00 p.m.)

WEST MIMS DEMOB  
6/4/2017

EQUIPMENT			OVERHEAD		
<u>Type</u>	<u>Request #</u>	<u>Name</u>	<u>Type</u>	<u>Request #</u>	<u>Name</u>
ENG7	E-881	GFC 4202601	DIVS	O-631	Burghardt
TPL2	E-371	GFC 3307	DZIA	O-720	Clark
TPL2	E-372	GFC 3295	STEQ	O-679	Brown
TPL2	E-509	Tipton & Young	ABRO	O-697	Wheeler
TPL3	E-370	GFC 3266	HEB2	O-721	Aldrich
TPL4	E-594	MSR2	HECM	O-698	O'Gorman
DOZ2	E-506	Tipton & Young	HECM	O-699	Santistevan
PU	E-932	NC-NCS-PA-1475	TPOP	O-800	Rager III
			EQPM	O-715	Keener
Mast	E-74	Rot Ranch			
Mast	E-834	Vin # B0062			
Mast	E-865	Westco			
Backhoe	E-73	Rot Ranch			
GRD1	E-866	Vin# 625863			
Doz2	E-506	Tipton & Young			
TPL2	E-509	Tipton & Young			

IF YOUR FLIGHT LEAVES EARLY IN THE MORNING PLEASE DEMOB THE NIGHT BEFORE

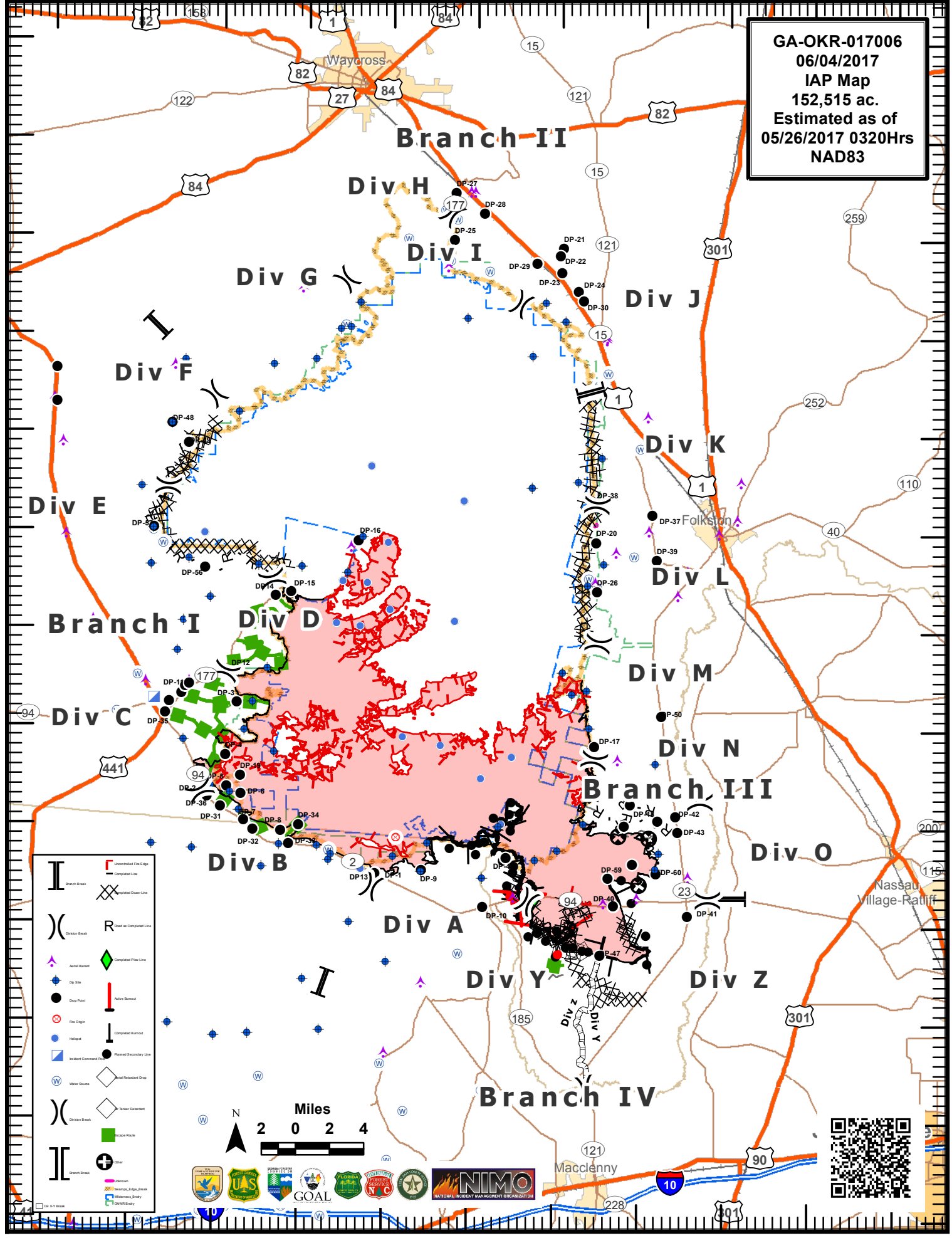
WEST MIMS DEMOB  
6/5/2017

EQUIPMENT			OVERHEAD		
<u>Type</u>	<u>Request #</u>	<u>Name</u>	<u>Type</u>	<u>Request #</u>	<u>Name</u>
ENG7	E-889	GFC 4201310	DIVS	O-718.37	Alexander
TRAC	E-675	PTC/JCL	FACL	O-718.48	Jackson
			PTRC	O-718.60	Miller
			GISS	O-718.45	Mulholland
			SPUL	O-718.47	Shidal
			GSUL	O-724	Henderson
			COST	O-718.6	Jessel
			PIO1	O-719.4	Downing

82°40'W 82°35'W 82°30'W 82°25'W 82°20'W 82°15'W 82°10'W 82°5'W 82°0'W 81°55'W 81°50'W

31°15'N 31°10'N 31°5'N 31°0'N 30°55'N 30°50'N 30°45'N 30°40'N 30°35'N 30°30'N 30°25'N 30°20'N 30°15'N

GA-OKR-017006  
06/04/2017  
IAP Map  
152,515 ac.  
Estimated as of  
05/26/2017 0320Hrs  
NAD83










This Page Intentionally left blank.

# MEDICAL PLAN (ICS 206 WF) (aka 9 Line)

## Medical Incident Report

**FOR ALL MEDICAL EMERGENCIES: IDENTIFY ON SCENE INCIDENT COMMANDER BY NAME AND POSITION AND ANNOUNCE "MEDICAL EMERGENCY" TO INITIATE RESPONSE FROM IMT COMMUNICATIONS/DISPATCH.**

**Use items one through nine to communicate situation to communications/dispatch.**

**1. CONTACT COMMUNICATIONS/DISPATCH**

*Ex: "Communications, Div. Alpha. Stand-by for Priority Medical Incident Report." (If life threatening request designated frequency be cleared for emergency traffic.)*

**2. INCIDENT STATUS:** Provide incident summary and command structure.

<b>Nature of Injury/Illness</b>		<i>Describe the injury (Ex: Broken leg with bleeding)</i>
Incident Name		<i>Geographic Name + "Medical" (Ex: Trout Meadow Medical)</i>
Incident Commander		<i>Name of IC</i>
Patient Care		<i>Name of Care Provider (Ex: EMT Smith)</i>

**3. INITIAL PATIENT ASSESSMENT:** Complete this section for each patient. This is only a brief, initial assessment. Provide additional patient info after completing this 9 Line Report.

Number of Patients:	Male / Female	Age:	Weight:
Conscious? <input type="checkbox"/> YES <input type="checkbox"/> <b>NO = MEDEVAC!</b>			
Breathing? <input type="checkbox"/> YES <input type="checkbox"/> <b>NO = MEDEVAC!</b>			
Mechanism of Injury: <i>What caused the injury?</i>			
Lat/Long (Datum WGS84) <i>Ex: N 40° 42.45' x W 123° 03.24'</i>			

**4. SEVERITY OF EMERGENCY, TRANSPORT PRIORITY**

SEVERITY	TRANSPORT PRIORITY
<input type="checkbox"/> <b>URGENT-RED Life threatening injury or illness.</b> <i>Ex: Unconscious, difficulty breathing, bleeding severely, 2° – 3° burns more than 4 palm sizes, heat stroke, disoriented.</i>	Ambulance or MEDEVAC helicopter. Evacuation need is <b>IMMEDIATE.</b>
<input type="checkbox"/> <b>PRIORITY-YELLOW Serious Injury or illness.</b> <i>Ex: Significant trauma, not able to walk, 2° – 3° burns not more than 1-2 palm sizes.</i>	Ambulance or consider air transport if at remote location. Evacuation may be <b>DELAYED.</b>
<input type="checkbox"/> <b>ROUTINE-GREEN</b> Not a life threatening injury or illness. <i>Ex: Sprains, strains, minor heat-related illness.</i>	Non-Emergency. Evacuation considered <b>Routine of Convenience.</b>

**5. TRANSPORT PLAN:**

**Air Transport:** (Agency Aircraft Preferred)

<input type="checkbox"/> Helispot	<input type="checkbox"/> Short-haul/Hoist	<input type="checkbox"/> Life Flight	<input type="checkbox"/> Other
-----------------------------------	---	--------------------------------------	--------------------------------

**Ground Transport:**

<input type="checkbox"/> Self-Extract	<input type="checkbox"/> Carry-Out	<input type="checkbox"/> Ambulance	<input type="checkbox"/> Other
---------------------------------------	------------------------------------	------------------------------------	--------------------------------

**6. ADDITIONAL RESOURCE/EQUIPMENT NEEDS:**

<input type="checkbox"/> Paramedic/EMT(s)	<input type="checkbox"/> Crew(s)	<input type="checkbox"/> SKED/Backboard/C-Collar
<input type="checkbox"/> Burn Sheet(s)	<input type="checkbox"/> Oxygen	<input type="checkbox"/> Trauma Bag
<input type="checkbox"/> Medication(s)	<input type="checkbox"/> IV/Fluid(s)	<input type="checkbox"/> Cardiac Monitor/AED
<input type="checkbox"/> Other (i.e. splints, rope rescue, wheeled litter)		

**7. COMMUNICATIONS:**

Function	Channel Name/Number	Receive (Rx)	Tone/NAC *	Transmit (Tx)	Tone/NAC *
<i>Ex: Command</i>	<i>Forest Rpt, Ch. 2</i>	<i>168.3250</i>	<i>110.9</i>	<i>171.4325</i>	<i>110.9</i>
COMMAND					
AIR-TO-GRND					
TACTICAL					

\*(NAC for digital radio system)

**8. EVACUATION LOCATION:**

Lat/Long (Datum WGS84) <i>EX: N 40 42.45' x W 123 03.24'</i>	
Patient's ETA to Evacuation Location:	
Helispot/Extraction Size and Hazards:	

**9. CONTINGENCY:**

**Considerations:** If primary options fail, what actions can be implemented in conjunction with primary evacuation method? Be thinking ahead...

**REMEMBER:** Confirm ETA's of resources ordered  
Act according to your level of training  
Be Alert. Keep Calm. Think Clearly. Act Decisively.