

INCIDENT ACTION PLAN

WEST MIMS FIRE

OPERATIONAL PERIOD

JUNE 9, 2017

0730-1930

SOUTHERN STATES TYPE-1 IMT

QR for IAP



GA-OKR-017006

FWS FFF2000000KYJ70

USFS PRKYJ717_1502 (P)

NPS PFFSKJ7017.00.1

QR for Maps





Schedule

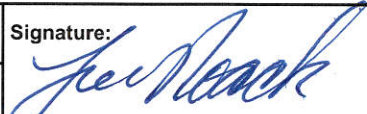
0730 Pre-Op Briefing
0800 Morning Briefing
1100 C & G
1600 Pre Planning Meeting
1700 Planning Meeting



INCIDENT OBJECTIVES (ICS 202)

1. Incident Name:		2. Operational Period: DAY SHIFT 0730-1930	
WEST MIMS		Date/Time From: 06/09/2017 0730 FRI	Date/Time To: 06/09/2017 1930 FRI
3. Objective(s):			
<ul style="list-style-type: none"> • Provide for the safety and security of incident personnel and public in all incident operations through sound risk assessment and hazard mitigations. • Confine all new fires (new starts or breakouts) within the Okefenokee National Wildlife Refuge and/or inside the swamp edge break. Fight fire aggressively and suppress all fire outside the swamp edge boundary, preventing fires from outside the break from entering the refuge while minimizing damage to private timberlands and improvements. • Maintain a positive working relationship with all adjacent landowners, cooperators and State and Federal partners. Inform, involve and communicate incident planning and operations with all including the Refuge Resource Advisors. • Protect all cultural and archeological sites and structures within the refuge. • Manage the fires cost-effectively, consistent with the values at risk. • Implement structure protection as necessary for at-risk facilities and communities. • Conduct all operations in a harassment-free environment. • Identify and initiate suppression repair on all Divisions. • Provide for a smooth and orderly transfer of command to the Type 3 IMT. 			
4. Operational Period Command Emphasis:			
Branch IV Keep fire East of the North Prong of St Mary's River; West of Nassau county Florida; and North of Baker county Florida Branch III Keep fire North of Rayonier Road 10, West of St Mary's River, and South of Stokes Road Keep fire within the Okefenokee Refuge Swamp Edge Break Boundary. Respond to initial attack fires on new starts within: *South of Suwannee Canal *Within the Okefenokee jurisdictional boundaries *Within state properties inside Perimeter Road			
General Situational Awareness:			
Utilize confine, contain, and point source protection strategies and tactics that commit operations personnel only where and when they can be successful, under conditions where important values at risk are protected with the least exposure.			
5. Site Safety Plan Required? Yes <input type="checkbox"/> No <input checked="" type="checkbox"/>			
Approved Site Safety Plan(s) Located at:			
6. Incident Action Plan (the items checked below are included in this Incident Action Plan):			
<input checked="" type="checkbox"/> ICS 202	<input type="checkbox"/> ICS 207	Other Attachments:	
<input checked="" type="checkbox"/> ICS 203	<input type="checkbox"/> ICS 208	<input checked="" type="checkbox"/> PIO MESSAGE	
<input checked="" type="checkbox"/> ICS 204	<input checked="" type="checkbox"/> ICS 220	<input checked="" type="checkbox"/> TENTATIVE DEMOB	
<input checked="" type="checkbox"/> ICS 205	<input checked="" type="checkbox"/> Map/Chart	<input checked="" type="checkbox"/> SAFETY MESSAGE	
<input type="checkbox"/> ICS 205A	<input checked="" type="checkbox"/> Weather Forecast/Tides/Currents	<input checked="" type="checkbox"/> RESTAURANT LIST	
<input checked="" type="checkbox"/> ICS 206			
7. Prepared by: SHAUN STEWART		Position/Title: PSC2 (T)	Signature: 
8. Approved by Incident Commander:		Name: KEITH MOUSEL	Signature: 
ICS 202		IAP Page	Date/Time: 06/08/2017 1900

ORGANIZATION ASSIGNMENT LIST (ICS 203)

1. Incident Name:		2. Operational Period: DAY SHIFT 0730-1930	
WEST MIMS		Date/Time From: 06/09/2017 0730 FRI	Date/Time To: 06/09/2017 1930 FRI
3. Incident Commander(s) and Command Staff:			
IC/UC	SAM LENEAVE; KEITH MOUSEL (T); MIKE QUESINBERRY	HUMAN RESOURCE SPECIALIST	LARRY SANDOVAL
SAFETY OFFICER	LARRY GRUBBS; LARRY CONNELL LUCAS MINTON (T)	INCIDENT METEOROLOGIST	TERRY LEBO THOMAS WRIGHT (T)
INFORMATION OFFICER	ANNALEASA WINTER TODD SCHROEDER MELANIE BANTON (T)	FIRE BEHAVIOR ANALYST	BART HOAG
LIAISON OFFICER	DANIEL STANLEY	RESOURCE ADVISOR	JOHN DUNLAP MIKE CRAWFORD
		ARCHAEOLOGIST	DWIGHT KIRKLAND GERALD BRINKLEY
4. Agency/Organization Representative(s):			
Agency/Organization	Name		
GFC PROTECTION	FRANK SORRELLS		
OKE REF MGR/ASSIST	MICHAEL LUSK; SARA CLARDY	6. Logistics Section:	
OKE REF FMO	REESE KERBOW	CHIEF	EAST - JIM PETERS WEST-DAVID MCVAY (T) SALLY BROWNING
GOAL	JIM BARRETT	FACILITIES UNIT	WEST-DENNIS EVANS EAST-STEPHEN TANNER
FL FFS	JOHN RAULERSON	GROUND SUPPORT UNIT	WEST-GLENN SIMMONS EAST-DOUGLAS CROCKER
GEMA	KRISTEN HIGGS; DIANE ADAMS	SUPPLY UNIT	WEST- JAMIE COPPLE
CLINCH CO EMA	WILL JOYCE; RANDY PATTEN	RCDM	PHILIP BRENTON
CHARLTON CO EMA	BRUCE YOUNG	ORDM	MARK MCCLELLAN
WARE CO EMA	JONATHAN DANIELL	MEDICAL UNIT	WEST-TRAVIS MCGOWEN
BAKER CO SO	BECK PARKER	FOOD UNIT	STEPHEN MARSHALL
COLUMBIA COUNTY	SHAYNE MORGAN	SECURITY UNIT	GREG BLANKS
OSCEOLA NF	IVAN GREEN	COMMUNICATIONS UNIT	CHUCK RADCLIFF PAUL NOA (T)
5. Planning Section:		BCMG	CHAD PRITCHETT
CHIEF	DUANE DURGEE; BOO WALKER (T) JOE BISHOP (T)		
RESOURCES UNIT	SHAUN STEWART FRED NOACK		
DEMOBILIZATION UNIT	BOBBY CAHAL MEREDITH BUTCHER (T)		
STATUS CHECKIN	JOSEPH ROBLES STACEY CLEMENSON		
DOCUMENTATION UNIT	TERI PARVIN		
SITUATION UNIT	SCOTT CROSBY PAT DEREN		
GIS SPECIALIST	JORDAN SMITH STEVE PENNY		
ITSS	DEAN GROE; RANDALL FOUNTAIN TIM STILTNER (T)		
TRAINING SPECIALIST	DAVID HUNT		
9. Prepared By:	Name: FRED NOACK	Position/Title: RESL	Signature: 
ICS 203	IAP Page	Date/Time: 06/08/2017 1800	



To: All Incident Personnel, West Mims Fire 2017

As the Unified Command Incident Commanders, we have a policy of “zero tolerance” of inappropriate behavior during incident operations. Any form of harassment, discriminatory practices, or disrespectful behavior will not be tolerated. Known or reported acts will be dealt with appropriately.

We are particularly concerned about the perception that alcohol has a place in any of the Incident facilities. It is not appropriate to indulge in alcoholic beverages during any fire assignment.

The National Team from the Southern Region has a policy of “NO ALCOHOL” from the time of dispatch until the time of physical release from the Incident. Members of the Team voluntarily comply with this policy; all incident personnel will be expected to do so also.

We endorse, support, and expect an attitude of mutual respect for all Incident personnel and the public we serve. We also, endorse the attitude and work ethic that places “Safety First, every time on every Incident.” We expect nothing less.

<p>/s/ Keith Mousel /s/ Mike Quesinberry Incident Commanders</p>
--



Fire Weather Forecast



FORECAST NO: 63
PREDICTION FOR: Friday
SHIFT DATE: June 9, 2017
FORECAST ISSUED: 1700 June 8, 2017

NAME OF FIRE: West Mims Fire
UNIT: Okefenokee National Wildlife Refuge
Incident Meteorologist: Terry Lebo - 240-499-6640
Incident Meteorologist (T): Tom Wright - 240-778-5304

DISCUSSION:

High pressure will bring mostly sunny and dry weather to the fire on Friday along with light east-southeast winds. Temperatures will be much warmer than recent days with highs near 90. It will also be drier with minimum humidities around 40%.

FRIDAY:

- WEATHER: Areas of morning fog, otherwise, mostly sunny.
- WIND (20 FT): Light and variable in the morning, becoming east-southeast 5-10 mph after noon.
- MAX TEMPERATURES: 89-92 MAX HEAT INDEX: 90-94 MIN RH: 40-45%
- LAL: 1 CHANCE RAIN: 0% DISPERSION (MAX): 30
- MIXING HEIGHT: 5000 RAINFALL: 0.00" TRANSPORT WINDS: ESE 10-15 mph

FRIDAY NIGHT:

- WEATHER: Mostly clear. Areas of fog.
- WIND (20 FT): Light and variable.
- MIN TEMPERATURES: 64-68 MAX RH: 100% MAX LVORI: 10
- LAL: 1 CHANCE OF RAIN: 0% RAINFALL: 0.00"

SATURDAY:

- WEATHER: Mostly sunny. Slight chance of a thunderstorm in the afternoon.
- WIND (20 FT): Light and variable in the morning, becoming southeast 5-10 mph after noon.
- MAX TEMPERATURES: 94-97 MAX HEAT INDEX: 100-105 MIN RH: 45-50%
- LAL: 2 CHANCE RAIN: 20% (pm) DISPERSION (MAX): 40
- MIXING HEIGHT: 5000 RAINFALL: <0.25" TRANSPORT WINDS: E 10-15 mph

Sunrise Thursday: 6:27 am Sunset Thursday: 8:32 pm Sunrise Friday: 6:27 am

Thunderstorms imply gusty and erratic winds, locally heavy rain, and lightning

RAWS Observations:

Jones Island



Eddy Tower



OKE East



OKE NW



Gator



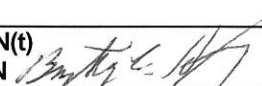
Low Tower



Indian Mound



FIRE BEHAVIOR FORECAST

FORECAST NUMBER: #53	TYPE OF FIRE: Wildland
FIRE NAME: West Mims	OPERATIONAL PERIOD: 06/09/2017 Day Operational Period
DATE ISSUED: 06/08/2017	TIME ISSUED: 1700
UNIT: Okefenokee National Wildlife Refuge	Prepared By: Mike Ward FBAN(t) Approved By: Bart Hoag FBAN 

FUEL ASSUMPTIONS: Fuel types include timber litter and grass/brush/timber types. The high risk fuel type is grass/palmetto/gallberry brush understory, particularly in the early/mid rotation pine plantations.

Fuels continue to recover moistures in most areas of the fire due to recent rains. Current fuel conditions are not favorable for active fire behavior. Active crown fire in brush and pine canopy is not expected over the next two operational periods.

KBDI: 129 (down 153 from yesterday) , **ERC-G:** 6

Fuel Moistures: 1hr= 18%, 10hr= 22%, 100 hr= 30%

Measured Live Woody Fuels Moisture (Gallberry): 116%, Live Herbaceous Fuel Moisture(Blue Stem): 129%

WEATHER SUMMARY: Showers and thunderstorms, heavy at times.

WIND (20 FT): Light & variable in the morning, becoming east-southeast 5-10 mph in the afternoon.
 MAX TEMPERATURES: 89-92 MIN RH: 40-45%
 LAL: 1 CHANCE OF RAIN: 0% MAX DISPERSION: 30
 MIXING HEIGHT: 5000 TRANSPORT WINDS: East-Southeast 10-15 mph

LARGE FIRE GROWTH FIRE ENVIRONMENT CONDITIONS PRESENT DURING FIRE RUN THAT THREATENED ST GEORGE ON MAY 5th, 2017.

Fuel dryness and fire weather combined to produce significant fire growth of 18,000 acres with an initial run that was 9 miles in length. Growth initiated in swamp brush fuels east of Soldier Camp Island and burned out of the refuge into pine plantation fuels.

Fuel Moistures: 1hr FM= 5% 10 hr. FM= 7% 100 hr. FM= 14% Live Woody= 101% Herbaceous= 119%

Indices: KBDI=720 (97th percentile) ERC G=37 (85th percentile) BI G=49 (97th percentile)

Weather Conditions: Max Temp=77 Min RH=27% Winds= 12 sustained with gusts to 20

Fire Behavior: ROS= >80 ch/hr. (1mile) Active crown fire Max spotting distance=1 mile

SPECIFIC: All Branches: The current fire weather forecast is not favorable for active fire behavior, and no significant fire spread events are expected during the current operational period. Surface fuels are nearly saturated with moisture from recent rains. In highly protected areas piles and/or organic soil fuels will continue to smolder.

Fuel Type	Rates of Spread	Flame Length	Max Spot Distance	Probability of Ignition	Torching / Crowning Potential / Flame Lengths
Southern Rough(pine w/palmetto/gallberry)	2 to 4 ch/hr.	1 to 3 foot	20 feet	5%	No Torching
Timber Litter (pine litter reburn)	.5 to 1 ch/hr.	0.5 feet	0 feet	5%	No Torching
Grass/Shrub (Young Plantations/Swamp GS3)	4 to 6 ch/hr.	2 to 5 foot	0 feet	5%	No Torching

AIR OPERATIONS: No expected impacts to aviation operations due to fire behavior, smoke or weather.

FIRE BEHAVIOR SAFETY:

Difficult walking conditions in burned areas due to excessive soil moisture levels causing slippery footing conditions. Use equipment to probe slash piles for heat, do not walk on top of piles, high potential for breaking through into extremely hot conditions.

Reference: 1 chain = 66 feet, 20 chains = .25 mile, 40 chains = .50 mile, 60 chains = .75 mile, 80 chains = 1 Mile

IA Protocol

- Determine LAT/LONG.
- Notify OSC and/or OPBD.
- OSC/OPBD will notify Unified IC's for approval to assist with ground or aviation resources.

In Georgia:

Southern Response Dispatch (229) 386-3846

If no contact-Buck Kline (912) 678-2694

In Florida-

Lake City (Baker, Columbia, and Hamilton Counties):
(386) 243-6243

Jacksonville (Nassau County): (904) 266-8351

If no contact-Rick Dolan (352) 353-5101

Osceola National Forest- Any starts south of Florida State Highway 2 under USFS jurisdiction are the responsibly of the Osceola NF. Contact Tallahassee Dispatch at 850-523-8600 or Forest Duty Officer Drew Page at 850-523-8600. Tractor plow units should not engage (unless life or property is threatened) before contact with Osceola NF (Chris Lydick at 850-264-3209 or Scott Hussey at 352-215-5722).

For OKR-

Brantley Boatright Dispatch (912) 496-7366 x 230
or (912) 276-0023

Division/Group Assignment List (ICS 204 WF)

1. Incident Name:			3.			
WEST MIMS			Branch:		Division/Group:	
2. Operational Period: DAY SHIFT 0730-1930			I		B/C	
Date/Time From: 06/09/2017 0730 FRI		Date/Time To: 06/09/2017 1930 FRI				
4. Operations Personnel						
PLANNING OPERATIONS CHIEF		BLAIR JOINER (T) DAVID SMITH (T)		OPERATIONS CHIEF		RICK DOLAN BUCK KLINE
BRANCH DIRECTOR		LAURA WARD - 6/14		DIVISION/GROUP SUPERVISOR		CHRIS ROBERTS - 6/11
SAFETY		LARRY GRUBBS LUCAS MINTON (T)		AIR TACTICAL GROUP SUPERVISOR		RONNIE RUCKER MARK NUNEZ
5. Resources Assigned this Period						
Strike Team / Task Force / Resource Designator		LWD	Leader	Number Persons	Drop Off PT./Time	Pick Up PT./Time
TFLD O-788		06/11	NATHAN ALLEN	1	ICP/0730	ICP/1930
ENG6 - NC-NCF E-691 E-255		06/11	HARVEY HOWARD JR	3	ICP/0730	ICP/1930
ENG6 - GFC4201757 E-1018		06/11	ROCK HOLT	2	ICP/0730	ICP/1930
GRD CORNELIUS E-942		07/01	DANNY THRIFT	1	ICP/0730	ICP/1930
HEQB O-547		06/12	RODNEY HELZER	1	ICP/0730	ICP/1930
EXCA - VIN# GXHFE E-622		07/01	BUCK RODDENBERRY	1	ICP/0730	ICP/1930
DOZ3 - VIN# 302873 E-623		07/01	KELLY PITTMAN	1	ICP/0730	ICP/1930
READ O-803		06/13	MICHAEL CRAWFORD	1	ICP/0730	ICP/1930
FOBS O-828		06/15	RANDY SMITH	1	ICP/0730	ICP/1930
SOF2 O-541		06/11	LOUIE CASAUS	1	ICP/0730	ICP/1930
8. Division/Group Communication Summary						
Function	Channel	RX Frequency N/W	RX Tone/NAC	TX Frequency N/W	TX Tone/NAC	Mode
COMMAND	8	159.2700N	156.7	151.1000N	123.0	A
TACTICAL	13	159.4125N	NONE	159.4125N	NONE	A
AIR TO GROUND	14	166.6750N	NONE	166.6750N	NONE	A
AIR TO GROUND	15	169.1500N	NONE	169.1500N	NONE	A
AIR GUARD	16	168.6250N	NONE	168.6250N	110.9	A
9. Prepared By (Resource Unit Leader)			Approved By (Planning Section Chief)		Date	Time
FRED NOACK			SHAUN STEWART, PSC2 (T)		06/08/2017	1800

Division/Group Assignment List (ICS 204 WF)

1. Incident Name:			3.			
WEST MIMS			I	Division/Group: B/C		
2. Operational Period: DAY SHIFT 0730-1930						
Date/Time From:	Date/Time To:					
06/09/2017 0730 FRI	06/09/2017 1930 FRI					
4. Operations Personnel						
PLANNING OPERATIONS CHIEF		BLAIR JOINER (T) DAVID SMITH (T)	OPERATIONS CHIEF		RICK DOLAN BUCK KLINE	
BRANCH DIRECTOR		LAURA WARD - 6/14	DIVISION/GROUP SUPERVISOR		CHRIS ROBERTS - 6/11	
SAFETY		LARRY GRUBBS LUCAS MINTON (T)	AIR TACTICAL GROUP SUPERVISOR		RONNIE RUCKER MARK NUNEZ	
6. Control Operations/Work Assignments:						
Task						
<ul style="list-style-type: none"> • Repair Sapp's Prairie to original state. • Patrol and mop up fuels appropriate to fuel type and anticipated weather and fire behavior. • Respond to any new starts within the division. • Create or improve fireline around logging debris in coordination with logging operators. 						
Purpose						
<ul style="list-style-type: none"> • Return Wilderness to original state. • Keep fire east of swamp edge fire break. • Keep fire north of GA 94/FL 2. 						
End State						
<ul style="list-style-type: none"> • Sapp's Prairie to original state. • Fire is contained by adequate control line to reduce threat to escape; minimizing damage to private timberland, private lands, and other resource values at risk. 						
7. Special Instructions:						
<p>Ensure LCES is in place before operations begin and stay hydrated. Drive defensively and with lights on at all times. Identify escape routes. Logging operations are continuing. Stay clear of cutting areas. Please be mindful of logging operations that will be ongoing. Ensure that all personnel stay clear of felling operations. Pay attention for potential reburn in logging areas. Work with Gilyard Logging foreman on any suppression actions within the logging area. Use caution when working around logging operations.</p> <p><u>For IA protocol see page 7.</u></p> <p>Additional Resources: Superior Pine Tractor Plow D-6; SP-83, SP-85, SP-87 Medical Emergency Channel: Command ETA for Ambulance to Scene: Air: 20-30 minutes Ground: 10-15 minutes, paved roads only. IWI - IC or approved person will use Channel 16 (Air Guard) for contact with air ambulance.</p>						
8. Division/Group Communication Summary						
Function	Channel	RX Frequency N/W	RX Tone/NAC	TX Frequency N/W	TX Tone/NAC	Mode
COMMAND	8	159.2700N	156.7	151.1000N	123.0	A
TACTICAL	13	159.4125N	NONE	159.4125N	NONE	A
AIR TO GROUND	14	166.6750N	NONE	166.6750N	NONE	A
AIR TO GROUND	15	169.1500N	NONE	169.1500N	NONE	A
AIR GUARD	16	168.6250N	NONE	168.6250N	110.9	A
9. Prepared By (Resource Unit Leader)			Approved By (Planning Section Chief)		Date	Time
FRED NOACK			SHAUN STEWART, PSC2 (T)		06/08/2017	1800

Division/Group Assignment List (ICS 204 WF)

1. Incident Name:			3.			
WEST MIMS			I		D	
2. Operational Period: DAY SHIFT 0730-1930						
Date/Time From: 06/09/2017 0730 FRI		Date/Time To: 06/09/2017 1930 FRI				
4. Operations Personnel						
PLANNING OPERATIONS CHIEF		BLAIR JOINER (T) DAVID SMITH (T)		OPERATIONS CHIEF		
				RICK DOLAN BUCK KLINE		
BRANCH DIRECTOR		LAURA WARD - 6/14		DIVISION/GROUP SUPERVISOR		
				WALTER BOWERS - 6/11		
SAFETY		LARRY GRUBBS LUCAS MINTON (T)		AIR TACTICAL GROUP SUPERVISOR		
				RONNIE RUCKER MARK NUNEZ		
5. Resources Assigned this Period						
Strike Team / Task Force / Resource Designator		LWD	Leader	Number Persons	Drop Off PT./Time	Pick Up PT./Time
TFLD O-792		06/10	TOM ROACH	1	ICP/0730	ICP/1930
ENG6 AR-OUF 691 E-838		06/13	RAYMOND SELF	3	ICP/0730	ICP/1930
ENG6 WY-RSD 1602 E-849		06/14	FRANK HAINES	4	ICP/0730	ICP/1930
TFLD O-850		06/15	JAMES SEARCY	1	ICP/0730	ICP/1930
EXCA - HUGHES RENTALS - FWS-OKR- E-1032		07/01	HARRIS WILSON	1	ICP/0730	ICP/1930
DOZ3 - HUGHES RENTALS - FSW-OKR- E-1033		07/01	DANNON PITTMAN	1	ICP/0730	ICP/1930
TRAC - HUGHES RENTAL - FWS-OKR- E-1035		07/01	JAMES GASKINS	1	ICP/0730	ICP/1930
MEC - HUGHES RENTAL - FWS-OKR- E-1036		07/01	DONALD DEAN	1	ICP/0730	ICP/1930
READ O-803		06/13	MICHAEL CRAWFORD	1	ICP/0730	ICP/1930
FOBS O-844		06/15	ERIK APLAND	1	ICP/0730	ICP/1930
SOF2 O-541		06/11	LOUIE CASAUSS	1	ICP/0730	ICP/1930
8. Division/Group Communication Summary						
Function	Channel	RX Frequency N/W	RX Tone/NAC	TX Frequency N/W	TX Tone/NAC	Mode
COMMAND	2	159.1200N	NONE	151.3700N	100.0	A
TACTICAL	1	154.2800N	NONE	154.2800N	156.7	A
AIR TO GROUND	14	166.6750N	NONE	166.6750N	NONE	A
AIR TO GROUND	15	169.1500N	NONE	169.1500N	NONE	A
AIR GUARD	16	168.6250N	NONE	168.6250N	110.9	A
9. Prepared By (Resource Unit Leader)			Approved By (Planning Section Chief)		Date	Time
FRED NOACK			SHAUN STEWART, PSC2 (T)		06/08/2017	1800

Division/Group Assignment List (ICS 204 WF)

1. Incident Name:			3.			
WEST MIMS			I	D		
2. Operational Period: DAY SHIFT 0730-1930						
Date/Time From: 06/09/2017 0730 FRI		Date/Time To: 06/09/2017 1930 FRI				
4. Operations Personnel						
PLANNING OPERATIONS CHIEF		BLAIR JOINER (T) DAVID SMITH (T)		OPERATIONS CHIEF		RICK DOLAN BUCK KLINE
BRANCH DIRECTOR		LAURA WARD - 6/14		DIVISION/GROUP SUPERVISOR		WALTER BOWERS - 6/11
SAFETY		LARRY GRUBBS LUCAS MINTON (T)		AIR TACTICAL GROUP SUPERVISOR		RONNIE RUCKER MARK NUNEZ
6. Control Operations/Work Assignments:						
Task						
<ul style="list-style-type: none"> Patrol and mop up fuels appropriate to fuel type and anticipated weather and fire behavior. Respond to any new starts within the division. Monitor fire activity and location in the vicinity of Billies Island. 						
Purpose						
<ul style="list-style-type: none"> Keep fire south of the Suwannee Canal. 						
End State						
<ul style="list-style-type: none"> Fire activity north and west of Billy's Island has been detected and appropriate action has been initiated. Fire is contained by adequate control line to reduce threat to escape; minimizing damage to private timberlands, private lands, and other resource values at risk. 						
7. Special Instructions:						
Ensure LCES is in place before operations begin and stay hydrated. Drive defensively and with lights on at all times. Identify escape routes.						
For IA protocol see page 7.						
Medical Emergency Channel: Command						
ETA for Ambulance to Scene:						
Air: 20-30 minutes						
Ground: 10-15 minutes, paved roads only.						
IWI - IC or approved person will use Channel 16 (Air Guard) for contact with air ambulance.						
Air Ambulance landing zone to be determined by IWI - IC.						
Utilize engines to provide dust abatement, as needed, prior to air ambulance landing.						
8. Division/Group Communication Summary						
Function	Channel	RX Frequency N/W	RX Tone/NAC	TX Frequency N/W	TX Tone/NAC	Mode
COMMAND	2	159.1200N	NONE	151.3700N	100.0	A
TACTICAL	1	154.2800N	NONE	154.2800N	156.7	A
AIR TO GROUND	14	166.6750N	NONE	166.6750N	NONE	A
AIR TO GROUND	15	169.1500N	NONE	169.1500N	NONE	A
AIR GUARD	16	168.6250N	NONE	168.6250N	110.9	A
9. Prepared By (Resource Unit Leader)			Approved By (Planning Section Chief)		Date	Time
FRED NOACK			SHAUN STEWART, PSC2 (T)		06/08/2017	1800

Division/Group Assignment List (ICS 204 WF)

1. Incident Name:			3.				
WEST MIMS			I	Branch:		Division/Group:	
2. Operational Period: DAY SHIFT 0730-1930				INITIAL ATTACK WEST			
Date/Time From: 06/09/2017 0730 FRI		Date/Time To: 06/09/2017 1930 FRI					
4. Operations Personnel							
PLANNING OPERATIONS CHIEF		BLAIR JOINER (T) DAVID SMITH (T)		OPERATIONS CHIEF		RICK DOLAN BUCK KLINE	
BRANCH DIRECTOR		LAURA WARD - 6/14		DIVISION/GROUP SUPERVISOR			
SAFETY		LARRY GRUBBS LUCAS MINTON (T)		AIR TACTICAL GROUP SUPERVISOR		RONNIE RUCKER MARK NUNEZ	
5. Resources Assigned this Period							
Strike Team / Task Force / Resource Designator		LWD	Leader	Number Persons	Drop Off PT./Time	Pick Up PT./Time	
STEQ O-799		06/10	STEVEN CAMPBELL	1	ICP/0730	ICP/1930	
TPL3 - GFC3186 E-687		06/10	CLARANCE THOMAS	1	ICP/0730	ICP/1930	
TPL2 - GFC3230 E-688		06/10	WILLIAM LANE	1	ICP/0730	ICP/1930	
TPL3 - GFC1536 E-689		06/10	BRIAN HARDEN	1	ICP/0730	ICP/1930	
READ O-803		06/13	MICHAEL CRAWFORD	1	ICP/0730	ICP/1930	
SOF2 O-813		06/20	RANDY MILLER	1	ICP/0730	ICP/1930	
6. Control Operations/Work Assignments:							
Task							
<ul style="list-style-type: none"> Respond to any new starts as requested by OKR duty officer. Coordinate initial attack action with assigned aviation and/or ground assets. 							
Purpose							
<ul style="list-style-type: none"> Ensure timely response on any initial attack within OKR jurisdictional boundaries and vicinity. 							
End State							
<ul style="list-style-type: none"> Fire activity has been detected and appropriate action has been initiated. 							
8. Division/Group Communication Summary							
Function	Channel	RX Frequency N/W	RX Tone/NAC	TX Frequency N/W	TX Tone/NAC	Mode	
COMMAND	7	159.2700N	156.7	151.1000N	100.0	A	
COMMAND	8	159.2700N	156.7	151.1000N	123.0	A	
TACTICAL	11	163.7125N	NONE	163.7125N	NONE	A	
AIR TO GROUND	14	166.6750N	NONE	166.6750N	NONE	A	
AIR TO GROUND	15	169.1500N	NONE	169.1500N	NONE	A	
AIR GUARD	16	168.6250N	NONE	168.6250N	110.9	A	
9. Prepared By (Resource Unit Leader)			Approved By (Planning Section Chief)		Date	Time	
FRED NOACK			SHAUN STEWART, PSC2 (T)		06/08/2017	1800	

Division/Group Assignment List (ICS 204 WF)

1. Incident Name:			3.				
WEST MIMS			I	Branch:		Division/Group:	
2. Operational Period: DAY SHIFT 0730-1930				INITIAL ATTACK WEST			
Date/Time From: 06/09/2017 0730 FRI		Date/Time To: 06/09/2017 1930 FRI					
4. Operations Personnel							
PLANNING OPERATIONS CHIEF		BLAIR JOINER (T) DAVID SMITH (T)		OPERATIONS CHIEF		RICK DOLAN BUCK KLINE	
BRANCH DIRECTOR		LAURA WARD - 6/14		DIVISION/GROUP SUPERVISOR			
SAFETY		LARRY GRUBBS LUCAS MINTON (T)		AIR TACTICAL GROUP SUPERVISOR		RONNIE RUCKER MARK NUNEZ	
7. Special Instructions:							
<p>Contact Resource Advisors for any cultural or archeological needs, as well as, RCW concerns. Ensure LCES is in place before operations begin and stay hydrated. Drive defensively and with lights on at all times. Communications: Use the tactical channel for the division you are in. Staging on east side at Refuge office.</p> <p>Use caution when working around logging operations.</p> <p>Medical Emergency Channel: Command ETA for Ambulance to Scene: Air: 20 – 30 mins Ground: 10 - 15 mins Paved roads only. IWI – IC or approved person will use Channel 16 (Air Guard) for contact with air ambulance Air Ambulance landing zone to be determined by IWI – IC Utilize engines to provide dust abatement, as needed, prior to air ambulance landing</p> <p>For IA protocol see page 7</p>							
8. Division/Group Communication Summary							
Function	Channel	RX Frequency N/W	RX Tone/NAC	TX Frequency N/W	TX Tone/NAC	Mode	
COMMAND	7	159.2700N	156.7	151.1000N	100.0	A	
COMMAND	8	159.2700N	156.7	151.1000N	123.0	A	
TACTICAL	11	163.7125N	NONE	163.7125N	NONE	A	
AIR TO GROUND	14	166.6750N	NONE	166.6750N	NONE	A	
AIR TO GROUND	15	169.1500N	NONE	169.1500N	NONE	A	
AIR GUARD	16	168.6250N	NONE	168.6250N	110.9	A	
9. Prepared By (Resource Unit Leader)			Approved By (Planning Section Chief)			Date	
FRED NOACK			SHAUN STEWART, PSC2 (T)			06/08/2017	
						1800	

Division/Group Assignment List (ICS 204 WF)

1. Incident Name:			3.			
WEST MIMS			III		Division/Group: INITIAL ATTACK EAST	
2. Operational Period: DAY SHIFT 0730-1930						
Date/Time From: 06/09/2017 0730 FRI		Date/Time To: 06/09/2017 1930 FRI				
4. Operations Personnel						
PLANNING OPERATIONS CHIEF		BLAIR JOINER (T) 6/9 DAVID SMITH (T) 6/11		OPERATIONS CHIEF		RICK DOLAN; FRED BOEHM BUTCH GALBRAITH (T) 6/11
BRANCH DIRECTOR		MIKE BRUNSON (6/13)		DIVISION/GROUP SUPERVISOR		DONALD HARRIS 6/17 ADAM MCCULLOUGH (T) 6/13
SAFETY		LARRY CONNELL		AIR TACTICAL GROUP SUPERVISOR		RONNIE RUCKER MARK NUNEZ
5. Resources Assigned this Period						
Strike Team / Task Force / Resource Designator		LWD	Leader	Number Persons	Drop Off PT./Time	Pick Up PT./Time
ENG6 NC-POR PLE1 E-2		06/10	LINWOOD BECKWITH	1	EAST CAMP/0730	EAST CAMP/1930
ENG6 OK 4261 E-36		06/18	WES O'CONNER	1	EAST CAMP/0730	EAST CAMP/1930
TPL2 OKE 56 E-35		06/13	WAYNE SMITH	1	EAST CAMP/0730	EAST CAMP/1930
TPL2 SC-CRR D-223 E-240			UNSTAFFED		EAST CAMP/0730	EAST CAMP/1930
TPL2 GA-SAR D922 E-288			UNSTAFFED		EAST CAMP/0730	EAST CAMP/1930
DO22 OKE 54 E-34		06/13	MATT BROWN	1	EAST CAMP/0730	EAST CAMP/1330
6. Control Operations/Work Assignments:						
Task						
<ul style="list-style-type: none"> • Respond to any new starts as requested by OKR duty officer. • Coordinate initial attack action with assigned aviation and/or ground assets. 						
Purpose						
<ul style="list-style-type: none"> • Ensure timely response on any initial attack within OKR jurisdictional boundaries and vicinity. 						
End State						
<ul style="list-style-type: none"> • Fire activity has been detected and appropriate action has been initiated. 						
8. Division/Group Communication Summary						
Function	Channel	RX Frequency N/W	RX Tone/NAC	TX Frequency N/W	TX Tone/NAC	Mode
COMMAND	ZONE 2 / CH 7	159.2700N	156.7	151.1000N	100.0	A
COMMAND	ZONE 2 / CH 8	159.2700N	156.7	151.1000N	123.0	A
TACTICAL	ZONE 2 / CH 12	159.4425N	NONE	159.4425N	NONE	A
AIR TO GROUND	ZONE 2 / CH 14	166.6750N	NONE	166.6750N	NONE	A
AIR TO GROUND	ZONE 2 / CH 15	169.1500N	NONE	169.1500N	NONE	A
AIR GUARD	ZONE 2 / CH 16	168.6250N	NONE	168.6250N	110.9	A
9. Prepared By (Resource Unit Leader)			Approved By (Planning Section Chief)		Date	Time
FRED NOACK			SHAUN STEWART, PSC2 (T)		06/08/2017	1800

Division/Group Assignment List (ICS 204 WF)

1. Incident Name:			3.			
WEST MIMS			III	Division/Group:		
2. Operational Period: DAY SHIFT 0730-1930				INITIAL ATTACK EAST		
Date/Time From: 06/09/2017 0730 FRI	Date/Time To: 06/09/2017 1930 FRI					
4. Operations Personnel						
PLANNING OPERATIONS CHIEF	BLAIR JOINER (T) 6/9 DAVID SMITH (T) 6/11		OPERATIONS CHIEF	RICK DOLAN; FRED BOEHM BUTCH GALBRAITH (T) 6/11		
BRANCH DIRECTOR	MIKE BRUNSON (6/13)		DIVISION/GROUP SUPERVISOR	DONALD HARRIS 6/17 ADAM MCCULLOUGH (T) 6/13		
SAFETY	LARRY CONNELL		AIR TACTICAL GROUP SUPERVISOR	RONNIE RUCKER MARK NUNEZ		
7. Special Instructions:						
<p>Contact Resource Advisors for any cultural or archeological needs, as well as, RCW concerns. Ensure LCES is in place before operations begin and stay hydrated. Drive defensively and with lights on at all times. Communications: Use the tactical channel for the division you are in. Staging on east side at Refuge office.</p> <p>Use caution when working around logging operations.</p> <p>Medical Emergency Channel: Command ETA for Ambulance to Scene: Air: 20 – 30 mins Ground: 10 - 15 mins Paved roads only. IWI – IC or approved person will use Channel 16 (Air Guard) for contact with air ambulance Air Ambulance landing zone to be determined by IWI – IC Utilize engines to provide dust abatement, as needed, prior to air ambulance landing</p> <p>For IA protocol see page 7</p>						
8. Division/Group Communication Summary						
Function	Channel	RX Frequency N/W	RX Tone/NAC	TX Frequency N/W	TX Tone/NAC	Mode
COMMAND	ZONE 2 / CH 7	159.2700N	156.7	151.1000N	100.0	A
COMMAND	ZONE 2 / CH 8	159.2700N	156.7	151.1000N	123.0	A
TACTICAL	ZONE 2 / CH 12	159.4425N	NONE	159.4425N	NONE	A
AIR TO GROUND	ZONE 2 / CH 14	166.6750N	NONE	166.6750N	NONE	A
AIR TO GROUND	ZONE 2 / CH 15	169.1500N	NONE	169.1500N	NONE	A
AIR GUARD	ZONE 2 / CH 16	168.6250N	NONE	168.6250N	110.9	A
9. Prepared By (Resource Unit Leader)		Approved By (Planning Section Chief)		Date	Time	
FRED NOACK		SHAUN STEWART, PSC2 (T)		06/08/2017	1800	

Division/Group Assignment List (ICS 204 WF)

1. Incident Name:				3.			
WEST MIMS				III		M/N/O	
2. Operational Period: DAY SHIFT 0730-1930							
Date/Time From: 06/09/2017 0730 FRI		Date/Time To: 06/09/2017 1930 FRI					
4. Operations Personnel							
PLANNING OPERATIONS CHIEF		BLAIR JOINER (T) 6/9 DAVID SMITH (T) 6/11		OPERATIONS CHIEF		RICK DOLAN; FRED BOEHM BUTCH GALBRAITH (T) 6/11	
BRANCH DIRECTOR		MICHAEL H BRUNSON 6/13		DIVISION/GROUP SUPERVISOR		BRENT VAN GUNDY 6/14; PAUL RYAN (T) 6/9	
SAFETY		LARRY CONNELL		AIR TACTICAL GROUP SUPERVISOR		RONNIE RUCKER MARK NUNEZ	
5. Resources Assigned this Period							
Strike Team / Task Force / Resource Designator		LWD	Leader	Number Persons	Drop Off PT./Time	Pick Up PT./Time	
TFLD O-791		06/09	MICHAEL M KCLICK	1	EAST CAMP/0730	EAST CAMP/1930	
ENG6 FWS 462 E-261		06/18	GRANT LOVATO	3	EAST CAMP/0730	EAST CAMP/1930	
ENG6 MBF - 694 E-776		06/17	BOOKER KRAMSCHUSTER	3	EAST CAMP/0730	EAST CAMP/1930	
ENG6 MES 6198 E-871		06/16	MARK ROUSSEAU	3	EAST CAMP/0730	EAST CAMP/1930	
ENG6 ACS29283 E-1012		06/09	MATTHEW KLINDT	2	EAST CAMP/0730	EAST CAMP/1930	
ENG6 ACS31278 E-1014		06/09	ELIJAH PREZIOSO	2	EAST CAMP/0730	EAST CAMP/1930	
EXCA T2 WILDLANDS FIRE SERVICE E-997		06/14	JEFF GHINTER	1	EAST CAMP/0730	EAST CAMP/1930	
HC2IA - JACKSON BLM C-16		06/12	FRED ASHFORD	20	EAST CAMP/0730	EAST CAMP/1930	
READ O-802		06/14	JOHN P DUNLAP	1	EAST CAMP/0730	EAST CAMP/1930	
FOBS O-797		06/11	JACOB ROBERT HOPPE	1			
FOBS O-827		06/15	JUSTIN CORRELL	1	EAST CAMP/0730	EAST CAMP/1930	
FOBS O-829		06/14	MICHAEL L TRIERWEILER	1	EAST CAMP/0730	EAST CAMP/1930	
FOBS O-830		06/15	JONATHAN A MANN	1	EAST CAMP/0730	EAST CAMP/1930	
SOF2 O-814		06/10	STEVEN R DAVIS	1	EAST CAMP/0730	EAST CAMP/1930	
8. Division/Group Communication Summary							
Function	Channel	RX Frequency N/W	RX Tone/NAC	TX Frequency N/W	TX Tone/NAC	Mode	
COMMAND	ZONE 2 / CH 3	159.1200N	NONE	151.3700N	82.5	A	
TACTICAL	ZONE 2 / CH 11	163.7125N	NONE	163.7125N	NONE	A	
AIR TO GROUND	ZONE 2 / CH 14	166.6750N	NONE	166.6750N	NONE	A	
AIR TO GROUND	ZONE 2 / CH 15	169.1500N	NONE	169.1500N	NONE	A	
AIR GUARD	ZONE 2 / CH 16	168.6250N	NONE	168.6250N	110.9	A	
9. Prepared By (Resource Unit Leader)			Approved By (Planning Section Chief)			Date	Time
FRED NOACK			SHAUN STEWART, PSC2 (T)			06/08/2017	1800

Division/Group Assignment List (ICS 204 WF)

1. Incident Name:			3.			
WEST MIMS			III		M/N/O	
2. Operational Period: DAY SHIFT 0730-1930						
Date/Time From: 06/09/2017 0730 FRI		Date/Time To: 06/09/2017 1930 FRI				
4. Operations Personnel						
PLANNING OPERATIONS CHIEF		BLAIR JOINER (T) 6/9 DAVID SMITH (T) 6/11		OPERATIONS CHIEF		RICK DOLAN; FRED BOEHM BUTCH GALBRAITH (T) 6/11
BRANCH DIRECTOR		MICHAEL H BRUNSON 6/13		DIVISION/GROUP SUPERVISOR		BRENT VAN GUNDY 6/14; PAUL RYAN (T) 6/9
SAFETY		LARRY CONNELL		AIR TACTICAL GROUP SUPERVISOR		RONNIE RUCKER MARK NUNEZ
6. Control Operations/Work Assignments:						
Task						
<ul style="list-style-type: none"> • Respond to any new starts within the division. • Patrol and mop up fuels appropriate to fuel type and anticipated weather and fire behavior. 						
Purpose						
<ul style="list-style-type: none"> • Keep fire within established fire containment lines. 						
End State						
<ul style="list-style-type: none"> • Fire is contained by adequate control line to reduce threat to escape; minimizing damage to private timberlands, private lands, and other resource values at risk. 						
7. Special Instructions:						
Ensure LCES are in place before operations begin and stay hydrated. Drive defensively and with lights on at all times. Identify escape routes. Use caution when working around logging operations.						
 Task Force Klick (TFLD O-791) and resources are working in the St. George Zone.						
 For IA protocol see page 7						
Medical Emergency Channel: Command						
ETA for Ambulance to Scene:						
Air: 20 – 30 mins						
Ground: 10 - 15 mins Paved roads only.						
IWI – IC or approved person will use Channel 16 (Air Guard) for contact with air ambulance						
Air Ambulance landing zone to be determined by IWI – IC						
Utilize engines to provide dust abatement, as needed, prior to air ambulance landing						
8. Division/Group Communication Summary						
Function	Channel	RX Frequency N/W	RX Tone/NAC	TX Frequency N/W	TX Tone/NAC	Mode
COMMAND	ZONE 2 / CH 3	159.1200N	NONE	151.3700N	82.5	A
TACTICAL	ZONE 2 / CH 11	163.7125N	NONE	163.7125N	NONE	A
AIR TO GROUND	ZONE 2 / CH 14	166.6750N	NONE	166.6750N	NONE	A
AIR TO GROUND	ZONE 2 / CH 15	169.1500N	NONE	169.1500N	NONE	A
AIR GUARD	ZONE 2 / CH 16	168.6250N	NONE	168.6250N	110.9	A
9. Prepared By (Resource Unit Leader)			Approved By (Planning Section Chief)		Date	Time
FRED NOACK			SHAUN STEWART, PSC2 (T)		06/08/2017	1800

Division/Group Assignment List (ICS 204 WF)

1. Incident Name:			3.			
WEST MIMS			Branch:		Division/Group:	
2. Operational Period: DAY SHIFT 0730-1930			IV		A	
Date/Time From: 06/09/2017 0730 FRI		Date/Time To: 06/09/2017 1930 FRI				
4. Operations Personnel						
PLANNING OPERATIONS CHIEF		BLAIR JOINER (T) DAVID SMITH (T) 6/11		OPERATIONS CHIEF		RICK DOLAN FRED BOEHM; BUTCH GALBRAITH (T)
BRANCH DIRECTOR		MICHAEL WORK 6/11		DIVISION/GROUP SUPERVISOR		JUSTIN HANLEY 6/9
SAFETY		LARRY CONNELL		AIR TACTICAL GROUP SUPERVISOR		RONNIE RUCKER MARK NUNEZ
5. Resources Assigned this Period						
Strike Team / Task Force / Resource Designator		LWD	Leader	Number Persons	Drop Off PT./Time	Pick Up PT./Time
TFLD O-851		06/15	CHARLES DAVIS	1	EAST CAMP/0730	EAST CAMP/1930
ENG6 MS-MNF 6171 E-77		06/19	MATTHEW POTTS	3	EAST CAMP/0730	EAST CAMP/1930
READ O-802		06/14	JOHN P DUNLAP	1	EAST CAMP/0730	EAST CAMP/1930
SOF2 O-540		06/12	JACK BENZILIO	1	EAST CAMP/0730	EAST CAMP/1930
6. Control Operations/Work Assignments:						
Task						
<ul style="list-style-type: none"> • Patrol and mop up fuels appropriate to fuel type and anticipated weather and fire behavior. • Respond to any new starts within the division. 						
Purpose						
<ul style="list-style-type: none"> • Keep fire north of FL 2. 						
End State						
<ul style="list-style-type: none"> • Fire is contained by adequate control line to reduce threat to escape; minimizing damage to private timberlands, private lands, and other resource values at risk. 						
7. Special Instructions:						
TFLD O-851 will be working in St. George Zone.						
Ensure LCES is in place before operations begin and stay hydrated. Drive defensively and with lights on at all times. Identify escape routes. Bridge near DP 9 restricted to pickups - No engines. Bridge on swamp perimeter road just east of first Branch has steep drop offs - 1 lane travel - watch for barricades.						
Use caution when working around logging operations.						
For IA protocol see page 7						
8. Division/Group Communication Summary						
Function	Channel	RX Frequency N/W	RX Tone/NAC	TX Frequency N/W	TX Tone/NAC	Mode
COMMAND	ZONE 2 / CH 8	159.2700N	156.7	151.1000N	123.0	A
TACTICAL	ZONE 2 / CH 12	159.4425N	NONE	159.4425N	NONE	A
AIR TO GROUND	ZONE 2 / CH 14	166.6750N	NONE	166.6750N	NONE	A
AIR TO GROUND	ZONE 2 / CH 15	169.1500N	NONE	169.1500N	NONE	A
AIR GUARD	ZONE 2 / CH 16	168.6250N	NONE	168.6250N	110.9	A
9. Prepared By (Resource Unit Leader)			Approved By (Planning Section Chief)		Date	Time
FRED NOACK			SHAUN STEWART, PSC2 (T)		06/08/2017	1800

Division/Group Assignment List (ICS 204 WF)

1. Incident Name:			3.			
WEST MIMS			IV	A		
2. Operational Period: DAY SHIFT 0730-1930						
Date/Time From: 06/09/2017 0730 FRI		Date/Time To: 06/09/2017 1930 FRI				
4. Operations Personnel						
PLANNING OPERATIONS CHIEF		BLAIR JOINER (T) DAVID SMITH (T) 6/11		OPERATIONS CHIEF		RICK DOLAN FRED BOEHM; BUTCH GALBRAITH (T)
BRANCH DIRECTOR		MICHAEL WORK 6/11		DIVISION/GROUP SUPERVISOR		JUSTIN HANLEY 6/9
SAFETY		LARRY CONNELL		AIR TACTICAL GROUP SUPERVISOR		RONNIE RUCKER MARK NUNEZ
7. Special Instructions:						
<p>Medical Emergency Channel: Command ETA for Ambulance to Scene: Air: 20 – 30 mins Ground: 10 - 15 mins Paved roads only. IWI – IC or approved person will use Channel 16 (Air Guard) for contact with air ambulance Air Ambulance landing zone to be determined by IWI – IC Utilize engines to provide dust abatement, as needed, prior to air ambulance landing</p>						
8. Division/Group Communication Summary						
Function	Channel	RX Frequency N/W	RX Tone/NAC	TX Frequency N/W	TX Tone/NAC	Mode
COMMAND	ZONE 2 / CH 8	159.2700N	156.7	151.1000N	123.0	A
TACTICAL	ZONE 2 / CH 12	159.4425N	NONE	159.4425N	NONE	A
AIR TO GROUND	ZONE 2 / CH 14	166.6750N	NONE	166.6750N	NONE	A
AIR TO GROUND	ZONE 2 / CH 15	169.1500N	NONE	169.1500N	NONE	A
AIR GUARD	ZONE 2 / CH 16	168.6250N	NONE	168.6250N	110.9	A
9. Prepared By (Resource Unit Leader)			Approved By (Planning Section Chief)		Date	Time
FRED NOACK			SHAUN STEWART, PSC2 (T)		06/08/2017	1800

Division/Group Assignment List (ICS 204 WF)

1. Incident Name:			3.			
WEST MIMS			IV		Y	
2. Operational Period: DAY SHIFT 0730-1930						
Date/Time From: 06/09/2017 0730 FRI		Date/Time To: 06/09/2017 1930 FRI				
4. Operations Personnel						
PLANNING OPERATIONS CHIEF		BLAIR JOINER (T) DAVID SMITH (T) 6/11		OPERATIONS CHIEF		RICK DOLAN FRED BOEHM; BUTCH GALBRAITH (T)
BRANCH DIRECTOR		MICHAEL WORK 6/11		DIVISION/GROUP SUPERVISOR		RANDY GREGORY 6/11
SAFETY		LARRY CONNELL		AIR TACTICAL GROUP SUPERVISOR		RONNIE RUCKER MARK NUNEZ
5. Resources Assigned this Period						
Strike Team / Task Force / Resource Designator		LWD	Leader	Number Persons	Drop Off PT./Time	Pick Up PT./Time
TFLD O-796		06/09	ANTHONY ARENDT	1	EAST CAMP/0730	EAST CAMP/1930
ENG6 KY-KYS 601 E-1006		06/09	DARREN L MORRIS	2	EAST CAMP/0730	EAST CAMP/1930
READ O-802		06/14	JOHN P DUNLAP	1	EAST CAMP/0730	EAST CAMP/1930
DINS O-866		06/16	CATHY L BLACK	1	EAST CAMP/0730	EAST CAMP/1930
DINS O-867		06/16	ELBERT W EARLEY	1	EAST CAMP/0730	EAST CAMP/1930
SOF2 O-540		06/12	JACK BENZILIO	1	EAST CAMP/0730	EAST CAMP/1930
6. Control Operations/Work Assignments:						
Task						
<ul style="list-style-type: none"> • Respond to any new starts within the division. • Patrol and mop up fuels appropriate to fuel type and anticipated weather and fire behavior. Eliminate obvious smoke which will trigger unnecessary calls to 911 system. 						
Purpose						
<ul style="list-style-type: none"> • Keep fire within established fire containment lines. 						
End State						
<ul style="list-style-type: none"> • Fire is contained by adequate control line to reduce threat to escape; minimizing damage to private timberlands, private lands, and other resource values at risk. 						
8. Division/Group Communication Summary						
Function	Channel	RX Frequency N/W	RX Tone/NAC	TX Frequency N/W	TX Tone/NAC	Mode
COMMAND	ZONE 2 / CH 8	159.2700N	156.7	151.1000N	123.0	A
TACTICAL	ZONE 2 / CH 9	159.2850N	NONE	159.2850N	156.7	A
AIR TO GROUND	ZONE 2 / CH 14	166.6750N	NONE	166.6750N	NONE	A
AIR TO GROUND	ZONE 2 / CH 15	169.1500N	NONE	169.1500N	NONE	A
AIR GUARD	ZONE 2 / CH 16	168.6250N	NONE	168.6250N	110.9	A
9. Prepared By (Resource Unit Leader)			Approved By (Planning Section Chief)		Date	Time
FRED NOACK			SHAUN STEWART, PSC2 (T)		06/08/2017	1800

Division/Group Assignment List (ICS 204 WF)

1. Incident Name:			3.			
WEST MIMS			IV		Y	
2. Operational Period: DAY SHIFT 0730-1930						
Date/Time From: 06/09/2017 0730 FRI		Date/Time To: 06/09/2017 1930 FRI				
4. Operations Personnel						
PLANNING OPERATIONS CHIEF		BLAIR JOINER (T) DAVID SMITH (T) 6/11		OPERATIONS CHIEF		RICK DOLAN FRED BOEHM; BUTCH GALBRAITH (T)
BRANCH DIRECTOR		MICHAEL WORK 6/11		DIVISION/GROUP SUPERVISOR		RANDY GREGORY 6/11
SAFETY		LARRY CONNELL		AIR TACTICAL GROUP SUPERVISOR		RONNIE RUCKER MARK NUNEZ
7. Special Instructions:						
<p>Division Y will be working in St. George Zone.</p> <p>Ensure LCES is in place before operations begin and stay hydrated. Drive defensively and with lights on at all times. Identify escape routes. Bridge near DP 9 restricted to pickups - No engines. Bridge on swamp perimeter road just east of first Branch has steep drop offs - 1 lane travel - watch for barricades.</p> <p>Use caution when working around logging operations.</p> <p>For IA protocol see page 7</p> <p>Medical Emergency Channel: Command ETA for Ambulance to Scene: Air: 20 – 30 mins Ground: 10 - 15 mins Paved roads only. IWI – IC or approved person will use Channel 16 (Air Guard) for contact with air ambulance Air Ambulance landing zone to be determined by IWI – IC Utilize engines to provide dust abatement, as needed, prior to air ambulance landing</p>						
8. Division/Group Communication Summary						
Function	Channel	RX Frequency N/W	RX Tone/NAC	TX Frequency N/W	TX Tone/NAC	Mode
COMMAND	ZONE 2 / CH 8	159.2700N	156.7	151.1000N	123.0	A
TACTICAL	ZONE 2 / CH 9	159.2850N	NONE	159.2850N	156.7	A
AIR TO GROUND	ZONE 2 / CH 14	166.6750N	NONE	166.6750N	NONE	A
AIR TO GROUND	ZONE 2 / CH 15	169.1500N	NONE	169.1500N	NONE	A
AIR GUARD	ZONE 2 / CH 16	168.6250N	NONE	168.6250N	110.9	A
9. Prepared By (Resource Unit Leader)			Approved By (Planning Section Chief)		Date	Time
FRED NOACK			SHAUN STEWART, PSC2 (T)		06/08/2017	1800

Division/Group Assignment List (ICS 204 WF)

1. Incident Name:			3.			
WEST MIMS			Branch:		Division/Group:	
2. Operational Period: DAY SHIFT 0730-1930			IV		Z	
Date/Time From: 06/09/2017 0730 FRI		Date/Time To: 06/09/2017 1930 FRI				
4. Operations Personnel						
PLANNING OPERATIONS CHIEF		BLAIR JOINER (T) 6/9 DAVID SMITH (T) 6/11		OPERATIONS CHIEF		
BRANCH DIRECTOR		MICHAEL WORK 6/11		DIVISION/GROUP SUPERVISOR		
SAFETY		LARRY CONNELL		AIR TACTICAL GROUP SUPERVISOR		
				RICK DOLAN FRED BOEHM; BUTCH GALBRAITH (T) JASON LONGFELLOW 6/11 RONNIE RUCKER MARK NUNEZ		
5. Resources Assigned this Period						
Strike Team / Task Force / Resource Designator		LWD	Leader	Number Persons	Drop Off PT./Time	Pick Up PT./Time
TFLD O-817		06/09	DAMON NELSON	1	EAST CAMP/0730	EAST CAMP/1930
ENG6 E-641 LEE E-1008		06/12	JAMES E COLLETT	2	EAST CAMP/0730	EAST CAMP/1930
ENG6 GFC4202239 E-1009		06/09	JAMES M. PEEBLES	2	EAST CAMP/0730	EAST CAMP/1930
ENG6 GFC4201296 E-1010		06/09	RACHEL JEAN	2	EAST CAMP/0730	EAST CAMP/1930
ENG6 ACS29693 E-1013		06/09	KYLE BRADLEY	2	EAST CAMP/0730	EAST CAMP/1930
EXCA2 - WILDLANDS FIRE SERVICE 113984 E-996		07/01	ROY ROWEN	2	EAST CAMP/0730	EAST CAMP/1930
READ O-802		06/14	JOHN P DUNLAP	1	EAST CAMP/0730	EAST CAMP/1930
SOF2 O-540		06/12	JACK BENZILIO	1	EAST CAMP/0730	EAST CAMP/1930
6. Control Operations/Work Assignments:						
Task						
<ul style="list-style-type: none"> • Respond to any new starts within the division. • Patrol and mop up fuels appropriate to fuel type and anticipated weather and fire behavior. • Rehabilitate contingency line. 						
Purpose						
<ul style="list-style-type: none"> • Keep fire within established fire containment lines. 						
End State						
<ul style="list-style-type: none"> • Fire is contained by adequate control line to reduce threat to escape; minimizing damage to private timberlands, private lands, and other resource values at risk. 						
8. Division/Group Communication Summary						
Function	Channel	RX Frequency N/W	RX Tone/NAC	TX Frequency N/W	TX Tone/NAC	Mode
COMMAND	ZONE 2 / CH 8	159.2700N	156.7	151.1000N	123.0	A
TACTICAL	ZONE 2 / CH 10	168.3500N	NONE	168.3500N	NONE	A
AIR TO GROUND	ZONE 2 / CH 14	166.6750N	NONE	166.6750N	NONE	A
AIR TO GROUND	ZONE 2 / CH 15	169.1500N	NONE	169.1500N	NONE	A
AIR GUARD	ZONE 2 / CH 16	168.6250N	NONE	168.6250N	110.9	A
9. Prepared By (Resource Unit Leader)			Approved By (Planning Section Chief)		Date	Time
FRED NOACK			SHAUN STEWART, PSC2 (T)		06/08/2017	1800

Division/Group Assignment List (ICS 204 WF)

1. Incident Name:			3.			
WEST MIMS			IV	Division/Group: Z		
2. Operational Period: DAY SHIFT 0730-1930						
Date/Time From: 06/09/2017 0730 FRI		Date/Time To: 06/09/2017 1930 FRI				
4. Operations Personnel						
PLANNING OPERATIONS CHIEF	BLAIR JOINER (T) 6/9 DAVID SMITH (T) 6/11			OPERATIONS CHIEF	RICK DOLAN FRED BOEHM; BUTCH GALBRAITH (T)	
BRANCH DIRECTOR	MICHAEL WORK 6/11			DIVISION/GROUP SUPERVISOR	JASON LONGFELLOW 6/11	
SAFETY	LARRY CONNELL			AIR TACTICAL GROUP SUPERVISOR	RONNIE RUCKER MARK NUNEZ	
7. Special Instructions:						
<p>Division Z will be working in St. George Zone.</p> <p>Use caution when working around logging operations. Medical Emergency Channel: Command ETA for Ambulance to Scene: Air: 20 – 30 mins Ground: 10 - 15 mins Paved roads only. IWI – IC or approved person will use Channel 16 (Air Guard) for contact with air ambulance Air Ambulance landing zone to be determined by IWI – IC Utilize engines to provide dust abatement, as needed, prior to air ambulance landing For IA protocol see page 7</p>						
8. Division/Group Communication Summary						
Function	Channel	RX Frequency N/W	RX Tone/NAC	TX Frequency N/W	TX Tone/NAC	Mode
COMMAND	ZONE 2 / CH 8	159.2700N	156.7	151.1000N	123.0	A
TACTICAL	ZONE 2 / CH 10	168.3500N	NONE	168.3500N	NONE	A
AIR TO GROUND	ZONE 2 / CH 14	166.6750N	NONE	166.6750N	NONE	A
AIR TO GROUND	ZONE 2 / CH 15	169.1500N	NONE	169.1500N	NONE	A
AIR GUARD	ZONE 2 / CH 16	168.6250N	NONE	168.6250N	110.9	A
9. Prepared By (Resource Unit Leader)			Approved By (Planning Section Chief)		Date	Time
FRED NOACK			SHAUN STEWART, PSC2 (T)		06/08/2017	1800

Division/Group Assignment List (ICS 204 WF)

1. Incident Name:			3.			
WEST MIMS			ROAD MAINT		Division/Group: ROAD MAINT	
2. Operational Period: DAY SHIFT 0730-1930						
Date/Time From: 06/09/2017 0730 FRI		Date/Time To: 06/09/2017 1930 FRI				
4. Operations Personnel						
PLANNING OPERATIONS CHIEF		BLAIR JOINER (T) DAVID SMITH (T)		OPERATIONS CHIEF		RICK DOLAN; FRED BOEHM BUTCH GALBRAITH (T) 6/11
BRANCH DIRECTOR				DIVISION/GROUP SUPERVISOR		JEREMY WILSON 6/10
SAFETY		LARRY CONNELL		AIR TACTICAL GROUP SUPERVISOR		RONNIE RUCKER MARK NUNEZ
5. Resources Assigned this Period						
Strike Team / Task Force / Resource Designator		LWD	Leader	Number Persons	Drop Off PT./Time	Pick Up PT./Time
TFLD O-794		06/11	MICHAEL KOLB	1	EAST CAMP/0730	EAST CAMP/1930
EXCA V# 500242 E-626		07/01	CRAIG CLOUD	1	EAST CAMP/0730	EAST CAMP/1930
TFLD O-793		06/10	BRENT SAWYER	1	EAST CAMP/0730	EAST CAMP/1930
GRD2 CORNELIUS FARMS E-941		07/01	JAMES COWAN	1	EAST CAMP/0730	EAST CAMP/1930
GRD2 R.O.T. RANCH E-234		07/01	ROBBY WORRELL	1	EAST CAMP/0730	EAST CAMP/1930
GRD2 R.O.T. RANCH E-639		07/01	WESLEY WOOD	1	EAST CAMP/0730	EAST CAMP/1930
READ O-802		06/14	JOHN P DUNLAP	1	EAST CAMP/0730	EAST CAMP/1930
6. Control Operations/Work Assignments:						
Task						
<ul style="list-style-type: none"> • Assess access roads to fire perimeter; repair or maintain as necessary in accordance with priority list provided by Operations Section Chief. • Provide adequate signage for traffic safety. • Assess single lane bridges and culverts for safety and maintenance needs. 						
Purpose						
<ul style="list-style-type: none"> • To keep adequate vehicular access to the fire perimeter. 						
End State						
<ul style="list-style-type: none"> • Access roads are in a safe and travel worthy condition. 						
8. Division/Group Communication Summary						
Function	Channel	RX Frequency N/W	RX Tone/NAC	TX Frequency N/W	TX Tone/NAC	Mode
COMMAND	ZONE 2 / CH 3	159.1200N	NONE	151.3700N	82.5	A
COMMAND	ZONE 2 / CH 8	159.2700N	156.7	151.1000N	123.0	A
TACTICAL	ZONE 2 / CH 10	168.3500N	NONE	168.3500N	NONE	A
AIR TO GROUND	ZONE 2 / CH 14	166.6750N	NONE	166.6750N	NONE	A
AIR TO GROUND	ZONE 2 / CH 15	169.1500N	NONE	169.1500N	NONE	A
AIR GUARD	ZONE 2 / CH 16	168.6250N	NONE	168.6250N	110.9	A
9. Prepared By (Resource Unit Leader)			Approved By (Planning Section Chief)		Date	Time
FRED NOACK			SHAUN STEWART, PSC2 (T)		06/08/2017	1800

Division/Group Assignment List (ICS 204 WF)

1. Incident Name:			3.			
WEST MIMS			Branch:		Division/Group:	
2. Operational Period: DAY SHIFT 0730-1930			ROAD MAINT		ROAD MAINT	
Date/Time From: 06/09/2017 0730 FRI		Date/Time To: 06/09/2017 1930 FRI				
4. Operations Personnel						
PLANNING OPERATIONS CHIEF		BLAIR JOINER (T) DAVID SMITH (T)		OPERATIONS CHIEF		RICK DOLAN; FRED BOEHM BUTCH GALBRAITH (T) 6/11
BRANCH DIRECTOR				DIVISION/GROUP SUPERVISOR		JEROMY WILSON 6/10
SAFETY		LARRY CONNELL		AIR TACTICAL GROUP SUPERVISOR		RONNIE RUCKER MARK NUNEZ
6. Control Operations/Work Assignments:						
7. Special Instructions:						
<p>Check in and out with Division Supervisor when moving between divisions. Medical Emergency Channel: Command ETA for Ambulance to Scene: Air: 20-30 mins Ground: 10-15 mins Paved road only. IWI - IC or approved person will use Channel 16 (Air Guard) for contact with air ambulance. Air Ambulance landing zone to be determined by IWI - IC. Utilize engines to provide dust abatement, as needed, prior to air ambulance landing.</p>						
8. Division/Group Communication Summary						
Function	Channel	RX Frequency N/W	RX Tone/NAC	TX Frequency N/W	TX Tone/NAC	Mode
COMMAND	ZONE 2 / CH 3	159.1200N	NONE	151.3700N	82.5	A
COMMAND	ZONE 2 / CH 8	159.2700N	156.7	151.1000N	123.0	A
TACTICAL	ZONE 2 / CH 10	168.3500N	NONE	168.3500N	NONE	A
AIR TO GROUND	ZONE 2 / CH 14	166.6750N	NONE	166.6750N	NONE	A
AIR TO GROUND	ZONE 2 / CH 15	169.1500N	NONE	169.1500N	NONE	A
AIR GUARD	ZONE 2 / CH 16	168.6250N	NONE	168.6250N	110.9	A
9. Prepared By (Resource Unit Leader)			Approved By (Planning Section Chief)		Date	Time
FRED NOACK			SHAUN STEWART, PSC2 (T)		06/08/2017	1800

Suppression Repair General Information

Suppression repair is underway in some areas of the Fire. While conducting suppression repair activities, please consider the following:

General Description: Repair of suppression constructed “fire breaks” is necessary to avoid excessive soil erosion and restore natural landscape surface water flows. While some fire breaks were created in previously undisturbed areas, most fire breaks were created by blading and/or widening existing roads or fire breaks.

Location (Suitable) Sites: All Divisions will have some level of suppression repair. Fire personnel are currently mapping repair needs. Branch and Division Supervisors will be provided with maps detailing suppression repair needs.

Ownership Type: Suppression repair is needed on Okefenokee NWR, John M. Bethea State Forest, Osceola National Forest, and Georgia Private Lands. It is important to know where you are working as ***repair specifications may vary by landowner type.***

Coordination of Repair with READs: Suppression repair work should be done under the direction of Branch or Division Supervisors and done in coordination with Resource Advisors to assure cultural and natural resource concerns have been addressed.

Completion of Repair: When specific suppression repairs are completed a READ should be contacted for final verification and documentation in Arc Collector.

If any type of **cultural resources or artifacts** are discovered during suppression repair activities, **stop work immediately** and contact a Resource Advisor or Archaeologist.

Incident Resource Advisors (READ)

<i>East Side-</i> John Dunlap	850-643-6373
<i>West Side-</i> Mike Crawford	541-778-1891

Incident Archaeologists (ARCH)

Dwight Kirkland - Refuge	912-309-9637
Gerald Brinkley - Refuge	229-454-9734
Chris Lydick – Osceola NF	850-264-3209

*******SEE SUPPRESSION REPAIR STANDARDS ON NEXT TWO PAGES*******

Suppression Repair Standards for State and Federally Owned Lands

1. **Permanent Firebreaks:** Berms and other excess soil displaced by firebreak construction should be pulled back into the disturbed area and returned to the original contour or pre-suppression grade. These lines will be identified by the appropriate landowner.

Firebreaks Constructed In Previously Undisturbed Areas: Repair of suppression constructed firebreaks is necessary to avoid excessive soil erosion, restore pre-fire landscape surface water flow patterns, and to facilitate movement of wildlife where necessary. Berms, vegetation and other excess soil displaced by firebreak construction should be pulled back into the disturbed area and returned to the original contour. Logs and other debris that are near the firebreak should be placed on the repaired firebreak to deter vehicle traffic.

Intermittent Stream Crossings: Firebreaks which cross drainages will be identified and inventoried for necessary repairs. Large debris piles located in these areas will be removed or spread away from wetlands or streams. Where fire lines cross stream channels, it is important to minimize soil movement into the stream and to prevent the stream from cutting a new channel in the firebreak. Use no more than 12-inch-high berms to keep the stream in its banks and direct soil movement away from the channel at crossings and approaches.

Perennial Stream or Canal Crossings: Guidance for repair will be provided by Resource Specialists.

2. **Point Locations:**
 - a) Incident Facilities: Site specific restoration will be needed
 - b) Previously Undisturbed Areas: Pull soil and vegetation from berms back onto the disturbed area. Some areas may require disposal or scattering excess piled vegetation in adjacent areas.
3. **Roads:** Roads identified for repair will need to be graded or reshaped to be brought back to pre-suppression condition.
 - a) Clean out, repair or replace damaged road culverts. Old damaged culverts should be removed from site and disposed of properly.
 - b) Repair damage to chip sealed roads and paved roads
 - c) Repair or replace damaged closure gates and locks.
 - d) Repair or replace damaged signs damaged by fire suppression activities.
 - e) Cut and fell trees identified as hazards along public access roads or trails.
 - f) Large piles of vegetative debris on or near roads should be broken up, mulched, or chipped as appropriate.

Suppression Repair Standards for Georgia Privately Owned Lands

The Georgia Forestry Commission (GFC) initiated the assessment of suppression repair needs within the State of Georgia on private lands. This initial assessment focused on the primary suppression fire line located within Divisions Alfa, Bravo, Charlie, Yankee and Zulu. The suppression activities which would impede the natural flow of water or lead to water quality risks through erosion and sedimentation were identified by coordinates and type of emergency repair needs. The following emergency suppression stabilization and repair actions will need to be implemented on private lands to ensure that suppression fire lines comply with Georgia's Best Management Practices for Forestry (BMPs).

Stream channels or defined waterways (perennial): Locations where primary suppression lines intersect stream channels or defined waterways debris will be removed from channel and leveled to pre-fire contour and depth. Berms/piled debris will need to be removed for forty feet from each side of channel. Water bars and turnouts are needed on each side of the channel between ten and twenty feet of the channel approach to prevent sedimentation.

Stream channels or defined waterways (intermittent): Locations where primary suppression lines intersect stream channels or defined waterways debris will be removed from channel and leveled to pre-fire contour and depth. Berms/piled debris will need to be removed for twenty feet from each side of channel. Water bars and turnouts are needed on each side of the channel between ten and twenty feet of the channel approach to prevent sedimentation.

Ephemeral areas: Locations where primary suppression lines intersect ephemeral areas soil and debris should be pulled back in and scattered as to restore to pre-fire contour and depth.

Primary and Secondary Roads: Locations where primary suppression lines intersect established permanent roads water bars and turn outs are needed to ensure water flows are not directed to roadways. Debris and soil should be removed from culvert sites restoring to pre-fire depth and contour.

Opening of berms: Locations in which large berms (exceeding three feet in height) for distances greater than 500 feet will need openings created (20 feet in width) on each side of berm (if applicable) to ensure that water can move freely off of and across primary suppression lines.

Water Quality Risks: Locations along primary suppression lines identified as posing an immediate and direct threat to water quality should be mitigated through the use of scattered debris and/or native plantings which would rapidly stabilize soil and reduce erosion potential.

AIR OPERATIONS SUMMARY (ICS220)

Prepared by: John Bragg

Prepared Date: 6/8/2017

Prepared Time: 17:00

1. INCIDENT NAME: West Mims	2. OPS PERIOD DATE: 6/09/17	START TIME: 0800	END TIME: 2030	SUNRISE: 0624	SUNSET TIME: 2030 (Folkston)
3. REMARKS Safety Notes: Hazards (SEE AND AVOID GENERAL AVIATION TRAFFIC AND AERIAL HAZARDS) -Maintain clear communications; confirm that drop location is clear; ground personnel state: "Clear to Drop" -Incident Aircraft conduct flight following with Pogo Helibase when ATGS is not up. -CEASE ALL FIRE OPERATIONS AT SUNSET -ALL AIRCRAFT SQUAWK 1255 ORDERING/FLIGHT REQUESTS -Request Helicopter water drops through Air Attack -Request Tankers/Retardant through Air Attack -Requests for Reconnaissance missions must go through Operations for pre-approval E-MAIL AIRCRAFT COSTS DAILY AT END OF SHIFT TO: al_d2011@yahoo.com			4. READY ALERT AIRCRAFT: N-350MW (Pogo)		5. TFR: None

6. PERSONNEL	NAME	PHONE #	7. FREQUENCIES	AM	FM	8. FIXED-WING- Type/ Make-Model/ N#/ Base
AOBD	John Bragg	423-483-2798	A/A - Fixed Wing (A-17)	120.3500		
	Air Ops Desk	912-637-5133	A/A - Rotor / TFR (A-37)	120.8500		
ASGS	Al Driesbach	805-703-0649	A/G 66 (Primary) (A-5)		166.6750	
			A/G 72 (Secondary) (A-16)		169.1500	
HEB2 - Pogo HEB2(T) - Pogo HEB2 - Lake City	Pat Mahoney Clinton Agidius Eric Bader (FICC)	720-280-1209 208-691-0155 303-704-1164	Deck/TOLC (Pogo)		168.0500	TANKERS – As available
			Deck (Lake City)		163.100	(T-41) BAE-146 / N374AC / LCQ (Off Thursdays)
	Pogo Helibase (3GE1)	912-496-4415				
	Lake City Helibase (LCQ)	561-512-6333	Air Guard		168.625 (110.9)	

9. HELICOPTER Remarks Box Legend: C=Cargo P=Passengers B=Bucket SN=Snorkel R=Rappel H=Hoist SH=Short Haul ME=Medical Evacuation/ Extraction Exu=Exclusive Use

FAA N#	T Y	A#	MAKE/ MODEL	BASE	START	READY to FLY	REMARKS	FAA N#	T Y	A#	MAKE/ MODEL	BASE	START	READY to FLY	REMARKS
350MW	3	164	AS350 B3E	Pogo (3GE1)	0800	0830	P, B, Exu	471CH	1	83	CH-47D	Lake City	0800	0830	SN Exu
351FW	3	90	AS350 B2	Pogo (3GE1)	0800	0830	P, B Exu								

10. Mission Request

Pogo: Px Ops

INCIDENT RADIO COMMUNICATIONS PLAN (ICS 205)

1. Incident Name:			2. Date/Time Prepared:			3. Operational Period: DAY SHIFT 0730-1930					
WEST MIMS			Date: 06/08/2017 Time: 0731			Date/Time From: 06/09/2017 0730 FRI			Date/Time To: 06/09/2017 1930 FRI		
4. Basic Radio Channel Use:											
Zone Group	Ch #	Function	Channel Name/Trunked Radio System Talkgroup	Assignment	RX Freq	RX Tone/NAC	TX Freq	TX Tone/NAC	Mode (A,D, or M)	Remarks	
2	1	TACTICAL	V FIRE 21	DIV D	154.2800N	NONE	154.2800N		A	IA W/ OSCEOLA NF	
2 WEST	2	COMMAND	S. FOSTER	DIV D	159.1200N	NONE	151.3700N	100.0	A		
2 EAST	3	COMMAND	CORNELIA	DIV M/N/O	159.1200N	NONE	151.3700N	82.5	A	ROAD MAINT	
2	5	COMMAND	GFC EDDY	GA FORESTRY	159.4650N	NONE	151.1450N	123.0	A	GA FORESTRY ONLY	
2 EAST	6	COMMAND	GA BEND	UNASSIGNED	159.2700N	156.7	151.1000N	156.7	A		
2 NORTH	7	COMMAND	FARGO RPT	INITIAL ATTACK	159.2700N	156.7	151.1000N	100.0	A	IA WEST, IA EAST, ROAD MAINT	
2 SOUTH	8	COMMAND	BAKER RPT	DIV A, B/C, Y, Z	159.2700N	156.7	151.1000N	123.0	A	IA WEST, IA EAST, ROAD MAINTENANCE	
2	9	TACTICAL	COMPACT	DIV Y	159.2850N	NONE	159.2850N	156.7	A		
2	10	TACTICAL	REFUGE TAC 1	DIV Z	168.3500N	NONE	168.3500N	NONE	A	ROAD MAINT	
2	11	TACTICAL	OSCEOLA PROJECT	DIV M/N/O, IA WEST	163.7125N	NONE	163.7125N	NONE	A		
2	12	TACTICAL	FFS 199	DIV A, IA EAST	159.4425N	NONE	159.4425N	NONE	A		
2	13	TACTICAL	FFS 200	DIV B/C	159.4125N	NONE	159.4125N	NONE	A		
2 ALL DIVISIONS	14	AIR TO GROUND	AIR TO GRD 66	A/G PRIMARY	166.6750N	NONE	166.6750N	NONE	A	AIR / GROUND PRIMARY	
2 ALL DIVISIONS	15	AIR TO GROUND	AIR TO GRD 72	A/G SECONDARY	169.1500N	NONE	169.1500N	NONE	A	AIR / GROUND SECONDARY	
2 ALL DIVISIONS	16	AIR GUARD	AIR GUARD	ALL DIVISIONS	168.6250N	NONE	168.6250N	110.9	A	EMERGENCY AIRCRAFT COMMUNICATIONS	
5. Special Instructions:											
WEST MIMS DAY PLAN											
6. Prepared By (Communications Unit Leader)				Name: PAUL NOA, COML-T				Signature:			
ICS 205				IAP Page				Date/Time: 06/08/2017 0731			

Telephone lines at ICP

Information/PIO	912-637-5132
Information	912-637-5108
Air Ops	912-637-5133
Ordering	912-637-5107
Ordering	912-637-5136
Ordering FAX	912-637-5104
Supply	912-637-5138
Ground Support	912-637-5105
Finance	912-637-5109
Finance FAX	912-637-5110
Operations	912-637-5112
Plans FAX	912-637-5115
Plans / Checkin	912-637-5137
Demob	912-637-5113
Communications	912-637-5116

Telephone lines at Eastside Camp

Operations	912-496-2278
Operations FAX	912-496-3115
Supply	912-496-3116
Supply FAX	912-496-3122
Ground Support	912-496-3407
Logistics	912-496-2293
Medical	912-496-2289

Last Update: 5/30/2017

HEALTH AND SAFETY MESSAGE

Success is no accident

INCIDENT: West Mims

DATE: Friday, June 9, 2017

Major Hazards & Risks Demob Safety Message

Demob Safety Message: Safe travels home or to your next assignment. Below are a few reminders to make your trip safer:

- ✓ Conduct walk around before driving after all stops
- ✓ Check for and secure all loose items (ie: tools, hose, and packs)
- ✓ **Wear seat belts at all times**
- ✓ **Monitor all drivers for fatigue,**
 - Switch drivers regularly if possible
 - If not find a safe place to stop, exit the vehicle and stretch a little
 - If all else fails, stop and take a short rest to revitalize.
- ✓ Obey Posted Speed Limits
- ✓ Ensure personnel have adequate nutrition and hydration for the trip or next assignment
- ✓ Drive between the hours of 0600 and 2200 and never drive more than 10 hours per driver
- ✓ Upon return home, advise your local Dispatch center/Supervisor.
- ✓ Be prepared to go on to the next incident

Thank you again for your hard work



Driving in the Rain Safety:

Check your tire tread.

Your tires directly affect how soon you'll stop on a wet road. The law of attraction for traction is the more rubber in contact with the road equates to the more traction you'll have,

Drive more slowly in the rain.

Few tactics can be as effective in driving on a wet road as simply slowing down. It gives your grooves time to work. This helps your tires maintain traction and helps give you more time to react to others on the road.

Remove distractions.

Yes, that means put down the smartphone, but it also means turning down your radio and maybe halting conversations for a while. This should go without saying, but, well, saying it.

Southern Area State IMT Safety Officers: Larry, Larry, Luke(t)



Human Resource Message

All I really need to know I learned in Kindergarten by Robert Fulghum

This is one of my favorite books. It has a lot of human resource messages. If you can't remember the book let me refresh you.

Wisdom is not at the top of the graduate-school mountain, but it was in the sand pile out on the playground in kindergarten. These are the things I learned.

- Share everything
- Play fair
- Don't hit people
- Clean up your own mess
- Don't take things that aren't yours
- Say you're sorry when you hurt somebody
- Wash your hands before you eat

A few more I would add include:

Smile more, listen more than you should speak and be nice to everyone. There are a lot of things adults can learn from Kindergarten.

HAVE A GREAT DAY!!!

Incident Human Resource Specialist: Larry Sandoval
Incident: West Mims Fire

MEDICAL PLAN (ICS 206 WF)

1. Incident/Project Name	2. Operational Period
West Mims Fire	Date/Time 6/9/17 0730 - 1930

3. Ambulance Services				
Name	Complete Address	Phone	Advanced Life Support (ALS)	
			Yes	No
Clinch County EMS	1050 Valdosta Hwy Homerville Ga	229-569-9280	YES	
Golden Isle EMS	210 West Park Ave. Valdosta Ga	229-300-0619	YES	
Okefenokee EMS	611 Riverside Ave. Waycross Ga	912-288-5703	YES	

4. Air Ambulance Services		
Name	Phone	Type of Aircraft & Capability
Air Methods	888-763-1010	AS 350 with night vision capabilities
Air Evac	888-269-6006	206 L4 + with night vision capabilities
Trauma 1	800-223-4878	Bell 407 & EC145 both with night vision capabilities

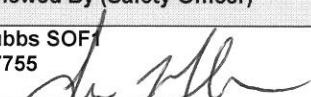
5. Hospitals									
Name Complete Address	GPS Datum – WGS 84 Coordinate Standard Degrees Decimal Minutes DD° MM.MMM' N - Lat DD° MM.MMM' W - Long		Travel Time		Phone	Helipad		Level of Care Facility	
	Lat:	Long:	Air	Gnd		Yes	No		
Memorial Satilla Health 1900 Teveau St. Waycross GA 31501	Lat:	N 31' 13.452	15 mins	45 mins	912-283-3030	<input checked="" type="checkbox"/>	<input type="checkbox"/>	Level III	
	Long:	W 82' 20.875							
	VHF:								
Clinch Memorial 1050 Valdosta Hwy Homerville Ga 31634	Lat:	N 31' 01.975	20 mins	30 mins	912-487-5211	<input checked="" type="checkbox"/>	<input type="checkbox"/>	Level IV	
	Long:	W 82' 45.850							
	VHF:								
Ed Frazier Hospital N. 3 rd Street MacClenny Fl 32036	Lat:	N 30' 28.482	15 mins	45 mins	904-259-3151	<input checked="" type="checkbox"/>	<input type="checkbox"/>	Level IV	
	Long:	W 82' 11.896							
	VHF:								
Shands Jacksonville 655 West 8 th Street Jacksonville Fl 32209	Lat:	N 30' 20.890	45 mins	90 mins	904-224-0411	<input checked="" type="checkbox"/>	<input type="checkbox"/>	Level I Trauma Center	
	Long:	W 81' 39.862							
	VHF:								
UF Shands Burn Center 1600 SW Archer Rd. Gainesville Fl 32610	Lat:	N 29' 38.648	45 mins	105 mins	352-265-8932	<input checked="" type="checkbox"/>	<input type="checkbox"/>	Burn Center	
	Long:	W 82' 21.189							
	VHF:								

IWI IC Responsibilities:

- Take charge of the scene – inform the Division Supervisor and Communications that you are the IWI IC and establish radio communications
- Assign or begin patient assessment (9 Line) and first aid.
- Determine patient transportation through consultation with line medical personnel and Medical Unit Leader.
- Order transportation resources through Communications as early as possible.
- Notify Communications as resources arrive and any patient status changes.
- Names of injured or deceased individuals will not be transmitted on the radio.
- Initiate documentation for future investigation; if a line safety officer is available, assign them to lead documentation.
- Conduct an After Action Review to determine successes, areas to improve and lessons learned

MEDICAL PLAN (ICS 206 WF)

6. Division Branch Group	
Medical Station WEST	
MEDL Station – Gary Allen Ford - EMPF John Tomazin - EMPF	470-366-6313 – Command Channel 2 470-366-6303
Medical Station EAST	
MEDL Station – Kathy Nemmers- EMPF Wade Allen - EMPF	602-885-3115 – Command Channel 3 928-240-0106

7. Prepared by (Medical Unit Leader)	8. Date/Time	9. Reviewed By (Safety Officer)	10. Date/Time
West Medical Travis McGowen MEDL (T) 470-532-8809	6/8/17	Larry Grubbs SOFI 850-228-7755 	6/8/17

WEST MIMS FIRE - RESTAURANT SERVICE

Last Update: Sunday, June 6, 2017

Breakfast \$11.00 Lunch \$12.00 Dinner \$23.00

Valdosta:

- Waffle House (S193) – 1819 W. Hill Dr., Valdosta, GA 31601 (229) 834-4907
- Cracker Barrel – 1195 St. Augustine Rd., Valdosta, GA (229) 244-5258

Fargo:

- Suwannee River Outfitters (S117) - P.O. Box 94 Fargo, Ga 31631 Store# (912) 637-5114 Bonnie Griffis (Owner) Cell# (229)460-6465 (6 a.m. – 8 p.m. Mon.-Sat., 6 a.m.- 3 p.m. Sun)
- Suwannee River Café (S118) - 190 Day Ave Fargo, GA 31631 (912) 637-5307 Lorene Odom (Owner) (6 a.m. – 8 p.m. Mon.-Sat., closed Sun)

Lake City:

- Waffle House (S940) – 3639 W. US Hwy. 90 Lake City, FL 32055 (385) 755-9066, Marilyn (Manager) (386) 344-2365
- Texas Roadhouse – 3039 W. Hwy. 90, (386) 758-0074. (Sun.-Thurs. 11:00 a.m.- 10:00 pm) (Fri.-Sat. 11:00 a.m.-11:00 pm)

Kingsland:

- Waffle House (S951) – 1201 East Kind Avenue, (912) 729-5690 Allen Newcomb (Manager) (770) 330-4446
- Cracker Barrel – 1200 Boone Ave. (912) 576-1991 (Sun.-Thurs. 6:00 a.m. – 10:00 p.m.)(Fri. – Sat. 6:00 a.m. – 11:00 p.m.)

Waycross:

- Huddle House (S977) - 1010 Memorial Drive Waycross, GA 31501 (912) 490-4353
- Hog-n-Bones – 1900 Memorial Drive, Waycross, GA 31501 (912) 285-3657 (Mon. –Sat. 6:00 a.m.-9:00 p.m.) Closed Sundays
- Cracker Barrel – 2521 Memorial Dr (912) 285-8615 (Sun.-Thurs. 6:00 a.m. – 10:00 p.m.)(Fri. – Sat. 6:00 a.m. – 11:00 p.m.)

Homerville:

- Jerry J's (S716) – 89 E. Dame Avenue, Homerville, Ga 31634 (912) 487-2232 Richard Crosby (Owner) (912) 286-6720

Folkston:

- Okefenokee Adventures (S593) – 4159 Suwannee Canal Rd., (912) 496-7156 (temporarily closed)

WEST MIMS DEMOB
6/9/2017

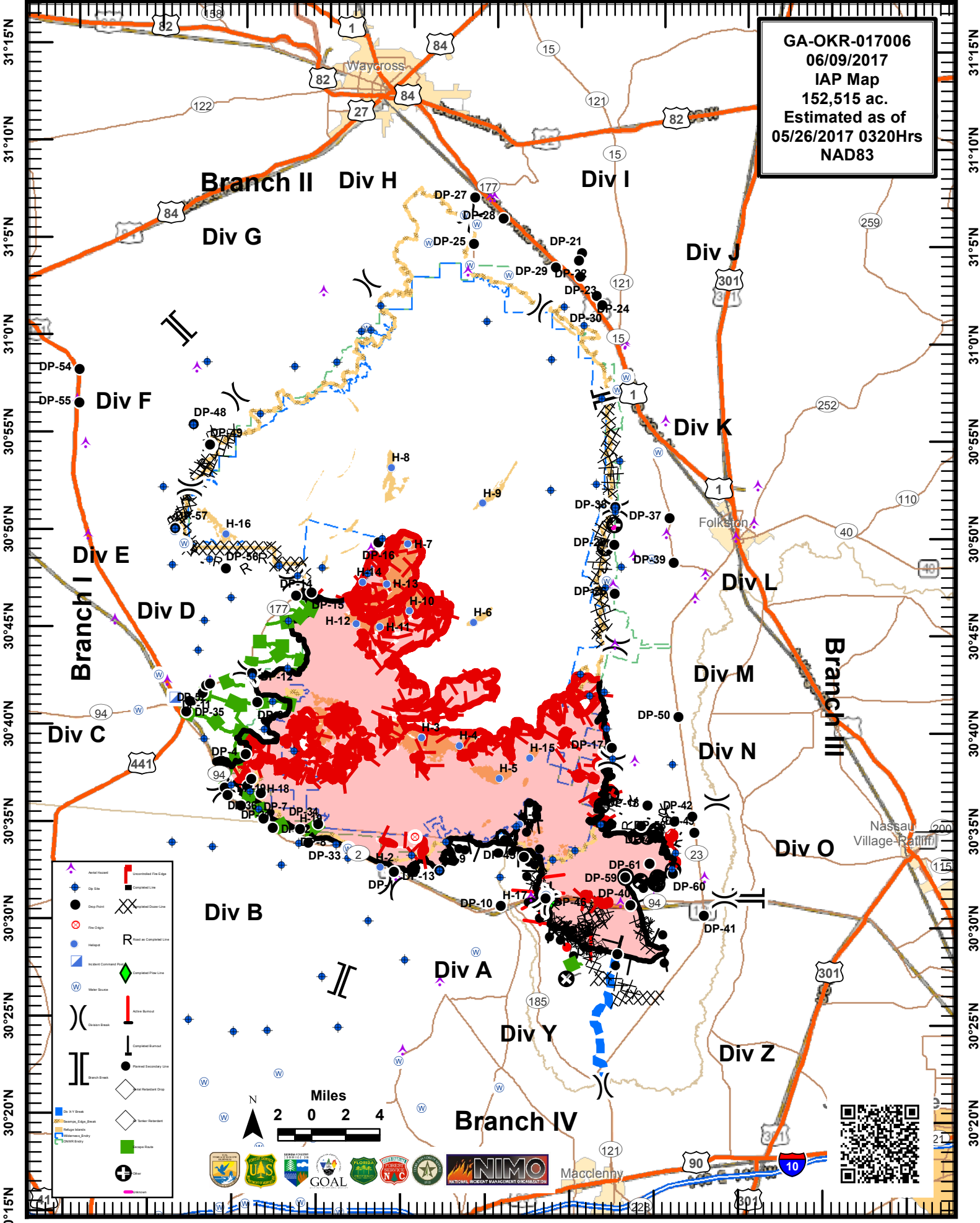
<u>Type</u>	<u>Request #</u>	<u>Name</u>	<u>Type</u>	<u>Request #</u>	<u>Name</u>
WTS2	E-265	Stricklands	SOF2	O-492	Oliverius
WTS2	E-272	Sticklands	SOF2	O-494	Abeyta
WTS2	E-366	Bonnell and Gravel	FBAN	O-742	Ward
WTS2	E-746	FFD Vin Z73020	FOBS	O-408	Humbach
ENG6	E-285	Mt-KNF	INCM	O-748	Walter
ENG6	E-659	KY-KYS	FACL	O-718.11	Evans
ENG6	796	Glenwood 632	TFLD	O-795	Helms
			DMOB	O-769	Butcher
	E-342.2	Schmidt	SCKN	O-770	Clendenen
	E-352.2	Stenhouse	SOF2	O-766	Minton
	E-375.2	Carrillo			
	E-376.2	Hempleman			

WEST MIMS DEMOB
6/10/2017

<u>Type</u>	<u>Request #</u>	<u>Name</u>	<u>DIV</u>	<u>Type</u>	<u>Request #</u>	<u>Name</u>
ENG6	E-1006	KY-KYS 601	Y	LCS3	O-832	Nelson
ENG6	E-1009	GFC 4202239	Z	DIVS(t)	O-789	Ryan, Paul M/N/O
ENG6	E-1010	GFC 4201296	Z	DIVS	O-812	Joiner
ENG6	E-1012	ACS 29283	M/N/O	TFLD	O-791	Klick, Michael M/N/O
ENG6	E-1013	GFC 29693	Z	DIVS(t)	O-834	Hanley, Justin A
ENG6	E-1014	ACS 31278	M/N/O	TFLD	O-796	Arendt, Anthony Y
				TFLD	O-817	Nelson, Damon Z
PU	E-1003	GFC4201489				
				IMT T2	O-718	SOUTHERN AREA STATE IMT

82°40'W 82°35'W 82°30'W 82°25'W 82°20'W 82°15'W 82°10'W 82°5'W 82°0'W 81°55'W 81°50'W

GA-OKR-017006
06/09/2017
IAP Map
152,515 ac.
Estimated as of
05/26/2017 0320Hrs
NAD83



- Aerial Hazard
- Drop Point
- Fire Origin
- Hose Tap
- Inbound Command Post
- Water Source
- Division Break
- Branch Break
- Unassigned Fire Edge
- Completed Line
- Hatched Clear Line
- Road as Completed Line
- Diamond Clear Line
- Diamond Prior Line
- Active Burned
- Completed Burned
- Threat Secondary Line
- Diamond Burned Strip
- Striped Burned
- Hatched Burned
- Scrape Pile
- Other
- Unknown



82°40'W 82°35'W 82°30'W 82°25'W 82°20'W 82°15'W 82°10'W 82°5'W 82°0'W 81°55'W 81°50'W

This Page Intentionally left blank.

MEDICAL PLAN (ICS 206 WF) (aka 9 Line)

Medical Incident Report

FOR ALL MEDICAL EMERGENCIES: IDENTIFY ON SCENE INCIDENT COMMANDER BY NAME AND POSITION AND ANNOUNCE "MEDICAL EMERGENCY" TO INITIATE RESPONSE FROM IMT COMMUNICATIONS/DISPATCH.

Use items one through nine to communicate situation to communications/dispatch.

1. CONTACT COMMUNICATIONS/DISPATCH

Ex: "Communications, Div. Alpha. Stand-by for Priority Medical Incident Report." (If life threatening request designated frequency be cleared for emergency traffic.)

2. INCIDENT STATUS: Provide incident summary and command structure.

Nature of Injury/Illness		<i>Describe the injury (Ex: Broken leg with bleeding)</i>
Incident Name		<i>Geographic Name + "Medical" (Ex: Trout Meadow Medical)</i>
Incident Commander		<i>Name of IC</i>
Patient Care		<i>Name of Care Provider (Ex: EMT Smith)</i>

3. INITIAL PATIENT ASSESSMENT: Complete this section for each patient. This is only a brief, initial assessment. Provide additional patient info after completing this 9 Line Report.

Number of Patients:	Male / Female	Age:	Weight:
Conscious? <input type="checkbox"/> YES <input type="checkbox"/> NO = MEDEVAC!			
Breathing? <input type="checkbox"/> YES <input type="checkbox"/> NO = MEDEVAC!			
Mechanism of Injury: <i>What caused the injury?</i>			
Lat/Long (Datum WGS84) <i>Ex: N 40° 42.45' x W 123° 03.24'</i>			

4. SEVERITY OF EMERGENCY, TRANSPORT PRIORITY

SEVERITY	TRANSPORT PRIORITY
<input type="checkbox"/> URGENT-RED Life threatening injury or illness. <i>Ex: Unconscious, difficulty breathing, bleeding severely, 2° – 3° burns more than 4 palm sizes, heat stroke, disoriented.</i>	Ambulance or MEDEVAC helicopter. Evacuation need is IMMEDIATE.
<input type="checkbox"/> PRIORITY-YELLOW Serious Injury or illness. <i>Ex: Significant trauma, not able to walk, 2° – 3° burns not more than 1-2 palm sizes.</i>	Ambulance or consider air transport if at remote location. Evacuation may be DELAYED.
<input type="checkbox"/> ROUTINE-GREEN Not a life threatening injury or illness. <i>Ex: Sprains, strains, minor heat-related illness.</i>	Non-Emergency. Evacuation considered Routine of Convenience.

5. TRANSPORT PLAN:

Air Transport: (Agency Aircraft Preferred)

<input type="checkbox"/> Helispot	<input type="checkbox"/> Short-haul/Hoist	<input type="checkbox"/> Life Flight	<input type="checkbox"/> Other
-----------------------------------	---	--------------------------------------	--------------------------------

Ground Transport:

<input type="checkbox"/> Self-Extract	<input type="checkbox"/> Carry-Out	<input type="checkbox"/> Ambulance	<input type="checkbox"/> Other
---------------------------------------	------------------------------------	------------------------------------	--------------------------------

6. ADDITIONAL RESOURCE/EQUIPMENT NEEDS:

<input type="checkbox"/> Paramedic/EMT(s)	<input type="checkbox"/> Crew(s)	<input type="checkbox"/> SKED/Backboard/C-Collar
<input type="checkbox"/> Burn Sheet(s)	<input type="checkbox"/> Oxygen	<input type="checkbox"/> Trauma Bag
<input type="checkbox"/> Medication(s)	<input type="checkbox"/> IV/Fluid(s)	<input type="checkbox"/> Cardiac Monitor/AED
<input type="checkbox"/> Other (i.e. splints, rope rescue, wheeled litter)		

7. COMMUNICATIONS:

Function	Channel Name/Number	Receive (Rx)	Tone/NAC *	Transmit (Tx)	Tone/NAC *
<i>Ex: Command</i>	<i>Forest Rpt, Ch. 2</i>	<i>168.3250</i>	<i>110.9</i>	<i>171.4325</i>	<i>110.9</i>
COMMAND					
AIR-TO-GRND					
TACTICAL					

*(NAC for digital radio system)

8. EVACUATION LOCATION:

Lat/Long (Datum WGS84) <i>EX: N 40 42.45' x W 123 03.24'</i>	
Patient's ETA to Evacuation Location:	
Helispot/Extraction Size and Hazards:	

9. CONTINGENCY:

Considerations: If primary options fail, what actions can be implemented in conjunction with primary evacuation method? Be thinking ahead...

REMEMBER: Confirm ETA's of resources ordered
Act according to your level of training
Be Alert. Keep Calm. Think Clearly. Act Decisively.