



# West Mims Fire

## Incident Action Plan

### Night

Operational Period

May 11-12, 2017

1800 – 0800

QR for IAP



*GA-OKR-017006*

*FWS FFF2000000KYJ70*

*USFS PRKYJ717\_1502 (P)*

*NPS PFFSKJ7017.00.1*

QR for Maps



#### Schedule

0730 Morning Briefing  
1200 C & G  
1500 Pre Planning Meeting  
1700 Planning Meeting  
1800 Night Briefing @ Bethea



## INCIDENT OBJECTIVES (ICS 202)

<b>1. Incident Name:</b>	<b>2. Operational Period: NIIGHT SHIFT 2000-</b>	
WEST MIMS	Date/Time From: <b>0800</b> 05/11/2017 1930 THU	Date/Time To: 05/12/2017 0730 FRI
<b>3. Objective(s):</b>		
<p>Branch IV Keep fire East of the North Prong of St Mary's river; West of Nassau county Florida; and North of Baker county Florida</p> <p>Branch III Keep fire North of Hwy 94, West of St Mary's River, and South of #19 road</p> <p>Keep fire within the Okefenokee Refuge Swamp Edge Break Boundary. Respond to initial attack fires on new starts within:</p> <p>*South of Suwannee Canal</p> <p>*Within the Okefenokee jurisdictional boundaries</p> <p>*Within state properties inside Perimeter Road</p>		
<b>4. Operational Period Command Emphasis:</b>		
<ul style="list-style-type: none"> <li>• Provide for the safety and security of incident personnel and public in all incident operations through sound risk assessment and hazard mitigations.</li> <li>• Maintain a positive working relationship with all adjacent landowners, cooperators State and Federal partners. Inform, involve and communicate incident planning and operations with all partners.</li> <li>• Confine all fires that are within the Okefenokee National Wildlife Refuge, inside the Refuge and/or inside the swamp edge break if possible. Aggressively suppress all fire outside the swamp edge boundary.</li> <li>• In cooperation with local timberland owners, use full suppression strategies and tactics to minimize damage to private timberlands and improvements and to prevent fires outside the Refuge from entering the Refuge.</li> <li>• Assist in management and suppression of additional fires (new starts or breakouts) in the vicinity as approved by Agency Administrators and Unified Incident Commanders.</li> <li>• Protect all cultural and archeological sites and structures within the refuge.</li> <li>• Manage the fires cost-effectively consistent with the values at risk.</li> <li>• Implement structure protection as necessary for at-risk facilities and communities.</li> <li>• Coordinate suppression actions with assigned Refuge Resource Advisors to protect endangered species.</li> <li>• Conduct all operations in a harassment-free environment. There will be a no tolerance atmosphere for harassment, alcohol, or illegal drug use. Everyone will be treated with dignity and respect.</li> </ul>		
<b>General Situational Awareness:</b>		
Utilize confine, contain, and point source protection strategies and tactics that commit operations personnel only where and when they can be successful, under conditions where important values at risk are protected with the least exposure.		
<b>5. Site Safety Plan Required?</b> Yes <input type="checkbox"/> No <input checked="" type="checkbox"/>		
<b>Approved Site Safety Plan(s) Located at:</b>		
<b>6. Incident Action Plan</b> (the items checked below are included in this Incident Action Plan):		
<input checked="" type="checkbox"/> ICS 202 <input checked="" type="checkbox"/> ICS 203 <input checked="" type="checkbox"/> ICS 204 <input checked="" type="checkbox"/> ICS 205 <input type="checkbox"/> ICS 205A <input checked="" type="checkbox"/> ICS 206	<input type="checkbox"/> ICS 207 <input checked="" type="checkbox"/> ICS 208 <input checked="" type="checkbox"/> ICS 220 <input checked="" type="checkbox"/> Map/Chart <input checked="" type="checkbox"/> Weather Forecast/Tides/Currents	Other Attachments: <input checked="" type="checkbox"/> <u>PIO MESSAGE</u> <input checked="" type="checkbox"/> <u>FINANCE MESSAGE</u> <input checked="" type="checkbox"/> <u>TENTATIVE DEMOB</u> <input type="checkbox"/> _____
<b>7. Prepared by:</b> BRIAN ELDREDGE	<b>Position/Title:</b> PSC2	<b>Signature:</b>
<b>8. Approved by Incident Commander:</b>		<b>Signature:</b>
<b>ICS 202 IAP Page</b>		<b>Date/Time:</b>

## ORGANIZATION ASSIGNMENT LIST (ICS 203)

<b>1. Incident Name:</b> WEST MIMS		<b>2. Operational Period:</b> DAY SHIFT 0830-2030	
		Date/Time From: 05/12/2017 0730	FRI
		Date/Time To: 05/12/2017 1930	FRI
<b>3. Incident Commander(s) and Command Staff:</b>		RESOURCE ADVISOR DAN BYRD; THSP-ARA	
IC/UC	MICHAEL DUEITT; BUCK KLINE; RICK DOLAN MIKE GOICOECHEA (T)	<b>6. Logistics Section:</b>	
		CHIEF	JOHNNY SMITH; RICK BARRETT (T)
SAFETY OFFICER	BRAD LIDELL; MICHAEL COOK; TONY RIVERS (T); CHARLIE PATTERSON (T)	LOGS CHIEF EAST	MICHAEL BURCHARD
INFORMATION OFFICER	CATHERINE HIBBARD; BONNIE STRAWSER; MICHAEL DAVIS (T)	SERVICE BRANCH DIRECTOR	JOE WALKER
LIAISON OFFICER	JD LEE, KEITH LAWRENCE ANDY GASTON	SUPPLY UNIT	MARK MORGAN
<b>4. Agency/Organization Representative(s):</b>		FACILITIES UNIT	ISH ENNIS
<b>Agency/Organization</b>	<b>Name</b>	GROUND SUPPORT UNIT	PATRICK WRIGHT; CHARLES WEATHERS
GFC PROTECTION	FRANK SORRELLS	COMMUNICATIONS UNIT	JERRY PATRICK; BARRY STEARNS (T)
OKE REF MGR/ASSIST	MICHAEL LUSK; SARA CLARDY	MEDICAL UNIT	FRED ALDER
OKE REF FMO	REESE KERBOW	COMT	RAY ADAMS; ROY FORTENBERRY
GOAL	JIM BARRETT	FOOD UNIT	ANDREW BOGGS
FLDOF	JOHN RAULERSON	ORDM	NINA GAINEY; LISA MEEKINS (T)
GEMA	DIANE ADAMS	RCDM	JOHN HAWKINS; JIM GACEY; MARC PRATT (T)
NORFOLK SOUTHERN	CHAD EDWARDS	EQPM	KIRBY HENNINSSSEN; JASON MCHAN
CLINCH CO EMA	WILL JOYCE; RANDY PATTEN	RADO	
CHARLTON CO EMA	BRUCE YOUNG	<b>7. Operations Section:</b>	
GADOT	TREVOR BROWN	OPS SECTION CHIEF	JIM DURRWACHTER; LARRY SMITH (T) SHANNON BOWMAN (T)
<b>5. Planning Section:</b>		PLANNING OPS	STEVE WEAVER JEREMY BRAND (T)
CHIEF	BRIAN ELDREDGE TERRY PIERCE	NIGHT OPS SECTION CHIEF (BRANCH I)	JAMES SCHWARTZ
RESOURCES UNIT	MISSY FORDER; DONNA THOMAS TIFFANY PATE	NIGHT OPS SECTION CHIEF (BRANCH III & VI)	PETE MYERS
STATUS CHECKIN	CARLA ROBERTS; SUE SOBIESKI; SHANEEN MOORE (T); BRANDEN TOLVER (T)	<b>Branch</b>	<b>I</b>
SITUATION UNIT	TERRY BOWERMAN KEVIN HIERS (T)	BRANCH DIRECTOR DAY	DARRELL MILLER;
DEMOBILIZATION UNIT	KAREN DAVIS, DAVID BROWN DALE WINE (T)	DIVISION/GROUP	DIV B TIM STILTNER; DAVID QUESINBERRY (T)
DOCUMENTATION UNIT	JAN FLEMING	DIVISION/GROUP	DIV C BERT PLANTE; ROBERT CLAYTOR (T)
ITSS	TONY FARMER, CORY NICOLSON TERRANCE CHAPLIN (T)	DIVISION/GROUP	DIV D JOEL BURGETT GREG TOLL
TRAINING SPECIALIST	LARRY MOORE, JR	DIVISION/GROUP	FL FFS CONTINGENCY GLEN DAVIS; JOHN RAULERSON
GIS SPECIALIST	ANDREW THOMPSON, DAVID JONES KEVIN WINTER	DIVISION/GROUP	DIV NIGHT B/C PAUL MANCUSO;
INCIDENT METEOROLOGIST	ANGELA ENYEDI JOE GOUDSWARD	DIVISION/GROUP	DIV NIGHT D/E RUSSELL COPP
FIRE BEHAVIOR ANALYST; AIR	GARY JARVIS; KELLY CAGLE, MATT FILBERT (T)	DIVISION/GROUP	NIGHT STRUCTURE CHRIS OBRIEN
		TASK FORCE LEADER	CHARLES DAVIS
		<b>Branch</b>	<b>II</b>
<b>9. Prepared By:</b>	<b>Name:</b> DONNA THOMAS	<b>Position/Title:</b> RESL	<b>Signature:</b>
ICS 203	IAP Page	<b>Date/Time:</b> 05/11/2017 2000	

## ORGANIZATION ASSIGNMENT LIST (ICS 203)

<b>1. Incident Name:</b>		<b>2. Operational Period:</b> DAY SHIFT 0830-2030	
WEST MIMS		Date/Time From: 05/12/2017 0730	FRI
		Date/Time To: 05/12/2017 1930	FRI
<b>Branch</b>	<b>III</b>	LOCAL FINANCE LIAISON	
PLANNING OPERATIONS CHIEF	DAVE WALKER		
BRANCH DIRECTOR	RON SMITH		
BRANCH DIRECTOR NIGHT	ROBERT TRINCADO		
DIVISION/GROUP	M/N	BRIAN BROWNING JASON LAGO	
DIVISION/GROUP	O	ROBERT THORP	
DIVISION/GROUP	IA	DONNIE HARRIS	
DIVISION/GROUP	DIV NIGHT M/N		
DIVISION/GROUP	DIV NIGHT O	MICHAEL CACHERO	
<b>Branch</b>	<b>IV</b>		
PLANNING OPERATIONS CHIEF	DAVE WALKER		
BRANCH DIRECTOR	STEVE MILLER		
NIGHT BRANCH DIRECTOR	ROBERT LAENG		
DIVISION/GROUP	A	RON ROURKS	
DIVISION/GROUP	Z	TRENT INGRAM	
DIVISION/GROUP	DAY STRUCTURE PROTECTION	CRAIG ROBERTSON	
DIVISION/GROUP	CONTINGENCY	BLAIR JOINER CHAD WILLIAMS	
DIVISION/GROUP	DIV NIGHT A	JOHN MOLVE	
DIVISION/GROUP	DIV NIGHT Z	SHANE STURGILL	
DIVISION/GROUP	NIGHT STRUCTURE PROTECTION	HAROLD KIBBE JOHN ALLBRIGHT (T)	
<b>7b. Air Operations Branch:</b>			
AIR OPS BRANCH DIRECTOR	TIMOTHY FAUST		
AIR SUPPORT GROUP SUPERVISOR	JOHN MASON		
AIR ATTACK SUPERVISOR	MARK NUNEZ; CHRIS WORREL; MIKE BOT (T) DEREK WHEELER (T)		
HEB1 POGO	MARC RUDKIN		
<b>8. Finance/Administration Section:</b>			
CHIEF	BONNY JOHNSON		
PROCUREMENT UNIT	JAMES MEREDITH; THERESA HOOD		
CONTRACTING OFFICER	THERESA HOOD		
COST UNIT	CAROLYN DETWILER; JENNY CROSS (T)		
TIME UNIT	JEAN FRICK		
COMPENSATION UNIT	VERMA COLEMAN STACEY EATON (T)		
<b>9. Prepared By:</b>	<b>Name:</b> DONNA THOMAS	<b>Position/Title:</b> RESL	<b>Signature:</b>
ICS 203	IAP Page	<b>Date/Time:</b> 05/11/2017 2000	



**To: All Incident Personnel, West Mims Fire 2017**

As the Unified Command Incident Commanders, we have a policy of “zero tolerance” of inappropriate behavior during incident operations. Any form of harassment, discriminatory practices, or disrespectful behavior will not be tolerated. Known or reported acts will be dealt with appropriately.

We are particularly concerned about the perception that alcohol has a place in any of the Incident facilities. It is not appropriate to indulge in alcoholic beverages during any fire assignment.

The National Team from the Southern Region has a policy of “NO ALCOHOL” from the time of dispatch until the time of physical release from the Incident. Members of the Team voluntarily comply with this policy; all incident personnel will be expected to do so also.

We endorse, support, and expect an attitude of mutual respect for all Incident personnel and the public we serve. We also, endorse the attitude and work ethic that places “Safety First, every time on every Incident.” We expect nothing less.

/s/ Mike Dueitt
/s/ Rick Dolan
/s/ Trent Ingram
Incident Commanders



## FIRE BEHAVIOR FORECAST

<b>FORECAST NUMBER: #22</b>	<b>TYPE OF FIRE: Wildland</b>
<b>FIRE NAME: West Mims</b>	<b>OPERATIONAL PERIOD: 05/11/2017</b>
<b>DATE ISSUED: 05/10/2017</b>	<b>TIME ISSUED: 1800</b>
<b>UNIT: Okfeenokee National Wildlife Refuge</b>	<b>Written: Kelly Cagle FBAN (t) Signed: Gary Jarvis FBAN</b>

**FUEL ASSUMPTIONS:** Timber with shrub understory (pine plantation) will be the most active fuel type. Re-burn potential is very high. Current fuel conditions are favorable for very active to extreme fire behavior within all fuel types. Expect all fuels to burn readily, including those that appear green. Once fire becomes established, expect it to continue to run until it runs out of fuel.

**The fuel moisture for today is:**

Calculated 1 hr fuel 2%, 10 hr fuel 6%, 100 hr fuel 14%

**ERC levels have been trending at or above 97 Percentile KBDI – 724**

**Critical fire behavior thresholds:** 1 HR Fuel Moisture <6%, RHs below 40% and a Dispersion Index greater than 60.

**WEATHER:** Hot and continued dry with near record high temps. Passing high clouds. West winds at 5-10 in the morning, increasing to 10-15 mph with gusts to 20 by midday.

Max temp : 93-98 Min RH 19-24% LAL 1 Chance Rain 0%

Dispersion 80 Mixing Height: 6800 Transport Winds: West 15-20 mph

**General Fire Behavior Forecast: Extreme burning conditions! Expect rapid development and intense fire behavior in any areas of available fuel. Long range spotting and high rates of spread will occur once fire is established in areas of pine plantation with shrub understory. Control lines will be tested. Unburned or dirty burn pockets along bends in control lines are high potential for escape. This fire on multiple occasions has produced flame lengths in excess of 100 feet and spotting distances of 1 mile.**

**SPECIFICS:** With westerly winds, re-burn will be pushed towards containment lines in Divisions M N O. Pay close attention to any portions of line where smoke may lay across your line.

**Fire will remain very active in Divisions A Z, especially those areas that may be unlined.**

**Other divisions – smoldering, creeping, and re-burn. Reb-burn potential is very high.**

### **PREDICTIONS FOR MOST ACTIVE TIME OF PEAK BURNING PERIOD USING WEATHER FROM INCIDENT IMET**

<b>Fuel Model</b>	<b>Fire Behavior</b>
SH 3 (shrub in the swamp)	ROS 10 to 15 ch/hr (.1 mph) FL 4 to 8 feet average
7 (Timber w/shrub palmetto)	ROS 40 to 80 ch/hr, (.5 to 1 mph) FL 8-12 feet average
8 Timber Litter (Pine needles in re-burn areas)	ROS 2 to 5 ch/hr (<.1 mph), FL 1-2 ft. (higher Flame lengths should be expected where shrub component remains)
Spotting	Spotting of a quarter to half mile should be expected. Spotting of 1 mile has occurred during afternoon runs.
Probability of Ignition	100%

**AIR OPERATIONS:** Limited surface visibility early, but should clear considerably by 1000 hours.

**FIRE BEHAVIOR SAFETY:** Strategic firing operation would be very challenging if wind is not in your favor. High potential exists for unmanageable spotting.

## Division/Group Assignment List (ICS 204 WF)

<b>1. Incident Name:</b>			<b>3.</b>			
WEST MIMS			<b>Branch:</b>		<b>Division/Group:</b>	
<b>2. Operational Period:</b>			<b>I</b>		<b>NIGHT DIV B/C</b>	
Date/Time From: 05/11/2017 1930 THU		Date/Time To: 05/12/2017 0730 FRI				
<b>4. Operations Personnel</b>						
<b>OPERATIONS CHIEF</b>		JAMES SCHWARTZ		<b>BRANCH DIRECTOR</b>		
<b>SAFETY</b>		KEVIN LABELLA		<b>DIVISION/GROUP SUPERVISOR</b>		PAUL MANCUSO;
<b>5. Resources Assigned this Period</b>						
Strike Team / Task Force / Resource Designator		LWD	Leader	Number Persons	Drop Off PT./Time	Pick Up PT./Time
STEQ O-257		05/12	MICHAEL BLOODWORTH	1	DP#3/2000	DP#3/0800
TPL4 BLECKLEY 71 E-70		05/12	WILLIAM SHELAR	1	DP#3/2000	DP#3/0800
TPL4 EVANS 72 E-71		05/12	ASHLEY SIKES	1	DP#3/2000	DP#3/0800
TPL4 CANDLER 71 E-72		05/12	JOSEPH HILLIARD	1	DP#3/2000	DP#3/0800
ENG6 - CRANE'S WILDLAND FIRE RESPONSE E-150		05/19	MICHAEL THOMAS	2	DP#3/2000	DP#3/0800
ENG6 - PATRICK ENVIRONMENTAL E95 E-147		05/21	NAIL RAFIKOV BEN CASTLE (T)	3	DP#3/2000	DP#3/0800
ENG6 - PATRICK ENVIRONMENTAL E94 E-151		05/18	RIDGLEY	3	DP#3/2000	DP#3/0800
EMPF E-352 602-885-3115		05/16	KATHY NEMMERS	1	DP#3/2000	DP#3/0800
<b>6. Control Operations/Work Assignments:</b>						
<b>Purpose:</b> Provide transitional support to day shift operations. Keep fire within fire control lines.						
<b>Task:</b> Patrol lines in Div B and C Monitor fire activity and take appropriate action to contain						
<b>End State:</b> Confine fire consistent with protecting structures, private timberlands, and resource values at risk.						
<b>7. Special Instructions:</b>						
Contact Night Incident Communications for any needs. Brief/Debrief at John M Bethea State Forest with all night Divisions. Identify escape routes. Loggers will be camping at the cutting area. Patrol logging operation area for potential reburn. Work with the logging foreman on any suppression action needs within the logging area.						
Medical Emergency Channel: Command ETA for Ambulance to Scene: Ground: 25 mins Approved Helispot: Drop Point 3 Lat: N 30 41.257 Long: W 82 28.833						
<b>8. Division/Group Communication Summary</b>						
Function	Channel	RX Frequency N/W	RX Tone/NAC	TX Frequency N/W	TX Tone/NAC	Mode
AIR TO GROUND	4	169.2000N	NONE	169.2000N	NONE	A
COMMAND	5	159.4650	CSQ	151.1450	123.0	A
TACTICAL	6	159.3900	CSQ	159.3900	156.7	A
AIR GUARD	16	168.6250	NONE	168.6250	110.9	A
<b>9. Prepared By (Resource Unit Leader)</b>			<b>Approved By (Planning Section Chief)</b>		<b>Date</b>	<b>Time</b>
TIFFANY PATE			BRIAN ELDREDGE		05/10/2017	1300



## Division/Group Assignment List (ICS 204 WF)

<b>1. Incident Name:</b>				<b>3.</b>			
WEST MIMS				<b>I</b>	<b>Division/Group:</b>		
<b>2. Operational Period:</b> <b>NIGHT SHIFT 2000-0800</b>					<b>NIGHT DIV B/C</b>		
Date/Time From: 05/11/2017 1930      THU		Date/Time To: 05/12/2017 0730      FRI					
<b>4. Operations Personnel</b>							
<b>OPERATIONS CHIEF</b>		JAMES SCHWARTZ		<b>BRANCH DIRECTOR</b>			
<b>SAFETY</b>		KEVIN LABELLA		<b>DIVISION/GROUP SUPERVISOR</b>		PAUL MANCUSO;	
<b>7. Special Instructions:</b>							
<b>8. Division/Group Communication Summary</b>							
Function	Channel	RX Frequency N/W	RX Tone/NAC	TX Frequency N/W	TX Tone/NAC	Mode	
AIR TO GROUND	4	169.2000N	NONE	169.2000N	NONE	A	
COMMAND	5	159.4650	CSQ	151.1450	123.0	A	
TACTICAL	6	159.3900	CSQ	159.3900	156.7	A	
AIR GUARD	16	168.6250	NONE	168.6250	110.9	A	
<b>9. Prepared By (Resource Unit Leader)</b>				<b>Approved By (Planning Section Chief)</b>		<b>Date</b>	<b>Time</b>
TIFFANY PATE				BRIAN ELDREDGE		05/10/2017	1300

## Division/Group Assignment List (ICS 204 WF)

<b>1. Incident Name:</b>			<b>3.</b>			
WEST MIMS			<b>I</b>		<b>NIGHT SHIFT D</b>	
<b>2. Operational Period:</b> <span style="float: right;"><b>NIIGHT SHIFT 2000-0800</b></span>						
Date/Time From: 05/11/2017 1930      THU		Date/Time To: 05/12/2017 0730      FRI				
<b>4. Operations Personnel</b>						
<b>OPERATIONS CHIEF</b>		JAMES SCHWARTZ		<b>BRANCH DIRECTOR</b>		
<b>SAFETY</b>		KEVIN LABELLA		<b>DIVISION/GROUP SUPERVISOR</b>		RUSSELL COPP
<b>5. Resources Assigned this Period</b>						
Strike Team / Task Force / Resource Designator		LWD	Leader	Number Persons	Drop Off PT./Time	Pick Up PT./Time
TFLD O-380		05/21	WILLIAM K HARRIS	1	DP#3/0800	DP#3/2000
ENG6 - UNIT #9663 - SMITHVILLE TF6 E-259		05/27	COLTON CURLES	3	DP#3/0800	DP#3/2000
ENG6 - NC-NCF E-691 E-255		05/20	CODY TROUT THOMAS	3	DP#3/0800	DP#3/2000
ENG6 - NC-NCF E-621 E-256		05/20	JASON BOONE	3	DP#3/0800	DP#3/2000
E-342 KIT-ALS-AMERICAN FIRE SERVICES		05/13	MICHAEL KOEPKE	1	DP#3/0800	DP#3/2000
<b>6. Control Operations/Work Assignments:</b>						
Purpose: Provide transitional support to day shift operations. Keep fire within fire control lines.						
Task: Patrol lines in DIV D and E. Monitor fire activity and take appropriate action.						
End State: Confine fire consistent with protecting structures, private timberlands, and resource values at risk.						
<b>7. Special Instructions:</b>						
Contact Night Incident Communications for any needs. Brief/Debrief at John Bethea State Forest with all night Divisions. Identify escape routes. Loggers will be camping at the cutting area. Patrol logging operation area for potential reburn. Work with the logging foreman on any suppression action needs with logging area.						
Medical Emergency Channel: Command ETA for Ambulance to Scene: Ground: 25 mins Approved Helispot: Drop Point 3 Lat: N 30 41.257 Long: W 82 28.833						
<b>8. Division/Group Communication Summary</b>						
Function	Channel	RX Frequency N/W	RX Tone/NAC	TX Frequency N/W	TX Tone/NAC	Mode
AIR TO GROUND	4	169.2000N	NONE	169.2000N	NONE	A
COMMAND	5	159.4650N	NONE	151.1450N	123.0	A
TACTICAL	6	159.3900N	NONE	159.3900N	156.7	A
AIR GUARD	16	168.6250N	NONE	168.6250N	110.9	A
<b>9. Prepared By (Resource Unit Leader)</b>			<b>Approved By (Planning Section Chief)</b>		<b>Date</b>	<b>Time</b>
TIFFANY PATE			BRIAN ELDRIDGE		05/11/2017	1300

## Division/Group Assignment List (ICS 204 WF)

<b>1. Incident Name:</b>			<b>3.</b>			
WEST MIMS			<b>I</b>	<b>Branch:</b>		<b>Division/Group:</b>
<b>2. Operational Period:</b> <span style="float: right;"><b>NIIGHT SHIFT 2000-0800</b></span>						<b>NIGHT STRUCTURE</b>
Date/Time From: 05/11/2017 1930      THU		Date/Time To: 05/12/2017 0730      FRI				
<b>4. Operations Personnel</b>						
<b>OPERATIONS CHIEF</b>		JAMES SCHWARTZ		<b>BRANCH DIRECTOR</b>		
<b>SOFR</b>		KEVIN LABELLA		<b>DIVISION/GROUP SUPERVISOR</b>		CHRIS OBRIEN
<b>5. Resources Assigned this Period</b>						
Strike Team / Task Force / Resource Designator		LWD	Leader	Number Persons	Drop Off PT./Time	Pick Up PT./Time
<b>6. Control Operations/Work Assignments:</b>						
<p><b>Purpose:</b> Provide transitional support to day shift operations. Keep fire within fire control lines.</p> <p><b>Task:</b> Ensure structure protection measures are in place within Branch I  Monitor fire activity and take appropriate action to contain  Coordinate with mutual aid resources.</p> <p><b>End State:</b> Confine fire consistent with protecting structures, private timberlands, and resource values at risk.</p>						
<b>7. Special Instructions:</b>						
<p>Contact Night Incident Communications for any needs. Brief/Debrief at John M Bethea State Forest with all night Divisions. Identify escape routes. Loggers will be camping at the cutting area. Patrol logging operation area for potential reburn. Work with the logging foreman on any suppression action needs within the logging area.</p> <p>Medical Emergency Channel: Command  ETA for Ambulance to Scene:  Ground: 25 mins  Approved Helispot: Drop Point 3  Lat: N 30 41.257  Long: W 82 28.833</p>						
<b>8. Division/Group Communication Summary</b>						
Function	Channel	RX Frequency N/W	RX Tone/NAC	TX Frequency N/W	TX Tone/NAC	Mode
AIR TO GROUND	4	169.2000N	NONE	169.2000N	NONE	A
COMMAND	5	159.4650	CSQ	151.1450	123.0	A
TRAVEL	6	159.3900	CSQ	159.3900	156.7	A
AIR GUARD	16	168.6250	NONE	168.6250	110.9	A
<b>9. Prepared By (Resource Unit Leader)</b>			<b>Approved By (Planning Section Chief)</b>		<b>Date</b>	<b>Time</b>
TIFFANY PATE			BRIAN ELDREDGE		05/11/2017	1300

## Division/Group Assignment List (ICS 204 WF)

<b>1. Incident Name:</b>			<b>3.</b>			
WEST MIMS			<b>III</b>		<b>NIGHT-M/N</b>	
<b>2. Operational Period:</b> <span style="float: right;"><b>NIIGHT SHIFT 2000-0800</b></span>						
Date/Time From: 05/11/2017 1930      THU		Date/Time To: 05/12/2017 0730      FRI				
<b>4. Operations Personnel</b>						
<b>OPERATIONS CHIEF</b>		PETE MYERS		<b>BRANCH DIRECTOR</b>		ROBERT TRINCADO
<b>SAFETY</b>		STEVE SMESTED		<b>DIVISION/GROUP SUPERVISOR</b>		
<b>5. Resources Assigned this Period</b>						
Strike Team / Task Force / Resource Designator		LWD	Leader	Number Persons	Drop Off PT./Time	Pick Up PT./Time
<b>6. Control Operations/Work Assignments:</b>						
<b>7. Special Instructions:</b>						
<p><b>Contact Night Incident Communications for any needs. Brief/Debrief at John M Bethea State Forest with all night Divisions. Identify escape routes. Loggers will be camping at the cutting area. Patrol logging operation area for potential reburn. Work with the logging foreman on any suppression action needs within the logging area.</b></p> <p>Medical Emergency Channel: Command  ETA for Ambulance to Scene:  Ground: 25 mins  Approved Helispot: Drop Point 3  Lat: N 30 41.257  Long: W 82 28.833</p>						
<b>8. Division/Group Communication Summary</b>						
Function	Channel	RX Frequency N/W	RX Tone/NAC	TX Frequency N/W	TX Tone/NAC	Mode
AIR TO GROUND	4	169.2000N	NONE	169.2000N	NONE	A
COMMAND	5	159.4650	CSQ	151.1450	123.0	A
TACTICAL	8	163.7125	CSQ	163.7125	CSQ	A
AIR TO GROUND	14	166.6750	CSQ	166.6750	CSQ	A
AIR TO GROUND	15	169.1500	CSQ	169.1500	CSQ	A
AIR GUARD	16	168.6250	NONE	168.6250	110.9	A
<b>9. Prepared By (Resource Unit Leader)</b>			<b>Approved By (Planning Section Chief)</b>		<b>Date</b>	<b>Time</b>
TIFFANY PATE			BRIAN ELDREDGE		05/11/2017	1300

## Division/Group Assignment List (ICS 204 WF)

<b>1. Incident Name:</b>			<b>3.</b>			
WEST MIMS			<b>III</b>		<b>NIGHT O</b>	
<b>2. Operational Period:</b> <span style="float: right;"><b>NIIGHT SHIFT 2000-0800</b></span>						
Date/Time From: 05/11/2017 1930      THU		Date/Time To: 05/12/2017 0730      FRI				
<b>4. Operations Personnel</b>						
<b>OPERATIONS CHIEF</b>		PETE MYERS		<b>BRANCH DIRECTOR</b>		ROBERT TRINCADO
<b>SAFETY</b>		STEVE SMESTED		<b>DIVISION/GROUP SUPERVISOR</b>		MICHAEL CACHERO
<b>5. Resources Assigned this Period</b>						
Strike Team / Task Force / Resource Designator		LWD	Leader	Number Persons	Drop Off PT./Time	Pick Up PT./Time
<b>6. Control Operations/Work Assignments:</b>						
<b>7. Special Instructions:</b>						
<p><b>Contact Night Incident Communications for any needs. Brief/Debrief at John M Bethea State Forest with all night Divisions. Identify escape routes. Loggers will be camping at the cutting area. Patrol logging operation area for potential reburn. Work with the logging foreman on any suppression action needs within the logging area.</b></p> <p>Medical Emergency Channel: Command  ETA for Ambulance to Scene:  Ground: 25 mins  Approved Helispot: Drop Point 3  Lat: N 30 41.257  Long: W 82 28.833</p>						
<b>8. Division/Group Communication Summary</b>						
Function	Channel	RX Frequency N/W	RX Tone/NAC	TX Frequency N/W	TX Tone/NAC	Mode
AIR TO GROUND	4	169.2000N	NONE	169.2000N	NONE	A
COMMAND	5	159.4650	CSQ	151.1450	123.0	A
TACTICAL	8	163.7125	CSQ	163.7125	CSQ	A
AIR TO GROUND	14	166.6750	CSQ	166.6750	CSQ	A
AIR TO GROUND	15	169.1500	CSQ	169.1500	CSQ	A
AIR GUARD	16	168.6250	NONE	168.6250	110.9	A
<b>9. Prepared By (Resource Unit Leader)</b>			<b>Approved By (Planning Section Chief)</b>		<b>Date</b>	<b>Time</b>
TIFFANY PATE			BRIAN ELDREDGE		05/11/2017	1300

## Division/Group Assignment List (ICS 204 WF)

<b>1. Incident Name:</b>			<b>3.</b>			
WEST MIMS			<b>IV</b>		<b>NIGHT A</b>	
<b>2. Operational Period:</b> <span style="float: right;"><b>NIIGHT SHIFT 2000-0800</b></span>						
Date/Time From: 05/11/2017 1930      THU		Date/Time To: 05/12/2017 0730      FRI				
<b>4. Operations Personnel</b>						
<b>BRANCH DIRECTOR</b>				<b>OPERATIONS CHIEF</b>		PETER MYERS
<b>SAFETY</b>		STEVE SMESTAD		<b>DIVISION/GROUP SUPERVISOR</b>		JOHN MOLVE
<b>5. Resources Assigned this Period</b>						
Strike Team / Task Force / Resource Designator		LWD	Leader	Number Persons	Drop Off PT./Time	Pick Up PT./Time
TFLD O-382		05/21	BRIAN GERMAN	1		
ENG6 - OK- #4 E-451		05/22	ANDREW CARR	2		
ENG6 - OK- #1 E-452		05/22	BROCK HILL	2		
ENG6 - OK-OKS SE #72 E-453		05/22	BRADLEY D WALKER	2		
EMPF E-315		05/17	STEVEN WOLFSTICH	1		
ENG6 - NC-NCF #631 E-534		05/23	JAMES CHERRY	3		
STEN O-412		05/24	JAMES FARRELL	1		
TFLD O-420		05/23	MATTHEW R HASKINS	1		
HEQB O-378		05/23	HALE REDDING	1		
PICKUP - CHASE TRUCK - UNIT #8509 - WOODVILLE E-648						
PICKUP - CHASE TRUCK - UNIT #9002 - AMARILLO E-649						
FIRE TRAX LLC - # 610 E-536		05/23	CARLOS GUTIERREZ	3		
WT2 E-313		05/17	WOODY BARGERON	1		
<b>6. Control Operations/Work Assignments:</b>						
<b>Purpose: Keep fire North of FL 2 and East of North Prong of St. Mary's River.</b> <b>Task: Patrol and mop up within 50 ft of fire perimeter.</b> <b>Respond to any new starts within Div.</b> <b>Determine and report contained line to Planning OSC1.</b> <b>End State: Confine fire perimeter to reduce threats and minimize damage to private timberlands and resources values at risk.</b>						
<b>8. Division/Group Communication Summary</b>						
Function	Channel	RX Frequency N/W	RX Tone/NAC	TX Frequency N/W	TX Tone/NAC	Mode
COMMAND	4	169.2000N	NONE	169.2000N	NONE	A
COMMAND	5	159.465	CSQ	151.1450	123.0	A
TRAVEL	6	159.390	CSQ	159.3900	156.7	A
TACTICAL	7	154.3025	CSQ	154.3025	156.7	A
AIR TO GROUND	14	166.675	CSQ	166.6750	CSQ	A
AIR TO GROUND	15	169.1500	CSQ	169.1500	CSQ	A
AIR GUARD	16	168.6250	NONE	168.6250	110.9	A
<b>9. Prepared By (Resource Unit Leader)</b>			<b>Approved By (Planning Section Chief)</b>		<b>Date</b>	<b>Time</b>
TIFFANY PATE			BRIAN ELDREDGE		05/11/2017	1300

## Division/Group Assignment List (ICS 204 WF)

<b>1. Incident Name:</b>			<b>3.</b>			
WEST MIMS			<b>IV</b>		<b>NIGHT A</b>	
<b>2. Operational Period:</b> <span style="float: right;"><b>NIIGHT SHIFT 2000-0800</b></span>						
Date/Time From: 05/11/2017 1930      THU		Date/Time To: 05/12/2017 0730      FRI				
<b>4. Operations Personnel</b>						
<b>BRANCH DIRECTOR</b>				<b>OPERATIONS CHIEF</b>		PETER MYERS
<b>SAFETY</b>		STEVE SMESTAD		<b>DIVISION/GROUP SUPERVISOR</b>		JOHN MOLVE
<b>7. Special Instructions:</b>						
<p>Ensure LCES is in place before operations begin and stay hydrated. Drive defensively and with lights on at all times. Identify escape routes. Bridge near DP 9 restricted to pickups - No engines. Bridge on swamp perimeter road just east of first Branch has steep drop offs - 1 lane travel - watch for barricades.</p> <p>DIVS Chad Williamson                      STEQ with 3 T2 Tractor Plow                      STEQ with 4 T3 Tractor Plow</p> <p>Two D8 KG Bladed Dozers Rolling Land Clearing (GFC Contract) - reporting to St. George at 1100 with transport and support vehicle.</p> <p>Medical Emergency Channel: Command                      ETA for Ambulance to Scene:                      Ground: 15 mins                      Approved Helispot: Drop Point 1                      Lat: N 30 30.929                      Long: W 82 14.174</p> <p><b>Primary</b> - Ambulance is ground contact with air ambulance  <b>Secondary</b> - IWI- IC or approved person will use channel 16 (Air Guard) for ground contact with air ambulance</p>						
<b>8. Division/Group Communication Summary</b>						
Function	Channel	RX Frequency N/W	RX Tone/NAC	TX Frequency N/W	TX Tone/NAC	Mode
COMMAND	4	169.2000N	NONE	169.2000N	NONE	A
COMMAND	5	159.465	CSQ	151.1450	123.0	A
TRAVEL	6	159.390	CSQ	159.3900	156.7	A
TACTICAL	7	154.3025	CSQ	154.3025	156.7	A
AIR TO GROUND	14	166.675	CSQ	166.6750	CSQ	A
AIR TO GROUND	15	169.1500	CSQ	169.1500	CSQ	A
AIR GUARD	16	168.6250	NONE	168.6250	110.9	A
<b>9. Prepared By (Resource Unit Leader)</b>			<b>Approved By (Planning Section Chief)</b>		<b>Date</b>	<b>Time</b>
TIFFANY PATE			BRIAN ELDREDGE		05/11/2017	1300

## Division/Group Assignment List (ICS 204 WF)

<b>1. Incident Name:</b>			<b>3.</b>			
WEST MIMS			<b>IV</b>		<b>NIGHT Z</b>	
<b>2. Operational Period:</b> <span style="float: right;"><b>NIIGHT SHIFT 2000-0800</b></span>						
Date/Time From: 05/11/2017 1930      THU		Date/Time To: 05/12/2017 0730      FRI				
<b>4. Operations Personnel</b>						
<b>BRANCH DIRECTOR</b>				<b>OPERATIONS CHIEF</b>		PETE MYERS
<b>SAFETY</b>		JAMES WILLIAMS		<b>DIVISION/GROUP SUPERVISOR</b>		SHAWN STURGILL
<b>5. Resources Assigned this Period</b>						
Strike Team / Task Force / Resource Designator		LWD	Leader	Number Persons	Drop Off PT./Time	Pick Up PT./Time
STEQ O-422		05/23	JEREMY LOWERY	1		
ENG6 - BALDWIN FORESTRY, LLC - A95852 - #1 E-535		05/23	ROYCE DAVIS	3		
ENG6 - NC-NCS - PP-9600 E-531		05/23	LUCKY JOE JONES	2		
TPLT2 - NC-NCS - 5X35 E-470		05/23	WAYNE BROWN	2		
ENG3 - WILDLANDS FIRE SERVICE INC - 892627 - 16 E-276		05/21	TYSON HUNT	3		
ENG3 - FAIRMOUNT - ENGINE 34 E-278		05/23	JOHNNIE T MACY	3		
ENG6 - CROSS TIMBERS FIRE MANAGEMENT - C03703 - E-284		05/26	SCOTT WHITE	3		
STEQ O-225		05/15	HAYDEN SETH HOLT	1		
TPL4 TIFT 70 GFC3212 E-297		05/15	TAYLOR BROWN	1		
TPL5 MILLER 71 GFC1018 E-298		05/15	GABRIEL A LOWRY	1		
TIPTON & YOUNG CONST E-340		05/12	DEVIN MCHZLEY	1		
TPL2 - FORESTRY COMPANY, THE INC - N03202 E-461		05/21	SAVELL SCHMIDT	1		
ENG6 BALDWIN FORESTRY ENGINE 1 E-535		05/23	ROYCE DAVIS	3		
STEN O-413		05/23	BRAD HUTTON ALLEN	1		
ENG6 - NC-NCF E-631 E-534		05/23	JAMES CHERRY	3		
ENG6 - T6 - BALDWIN FORESTRY, LLC - A95852 - E-1 E-535		05/23	ROYCE DAVIS	3		
EMPF O-388		05/22	KYLE PORT	1		
<b>8. Division/Group Communication Summary</b>						
Function	Channel	RX Frequency N/W	RX Tone/NAC	TX Frequency N/W	TX Tone/NAC	Mode
COMMAND	4	169.2000N	NONE	169.2000N	NONE	A
COMMAND	5	159.465	CSQ	151.1450	123.0	A
TACTICAL	11	163.100	CSQ	163.1000	CSQ	A
AIR TO GROUND	14	166.675	CSQ	166.6750	CSQ	A
AIR TO GROUND	15	169.1500	CSQ	169.1500	CSQ	A
AIR GUARD	16	168.6250N	NONE	168.6250N	110.9	A
<b>9. Prepared By (Resource Unit Leader)</b>			<b>Approved By (Planning Section Chief)</b>		<b>Date</b>	<b>Time</b>
TIFFANY PATE			BRIAN ELDREDGE		05/11/2017	1300



## Division/Group Assignment List (ICS 204 WF)

<b>1. Incident Name:</b>			<b>3.</b>				
WEST MIMS			<b>IV</b>		<b>NIGHT Z</b>		
<b>2. Operational Period:</b> <span style="float: right;"><b>NIIGHT SHIFT 2000-0800</b></span>							
Date/Time From: 05/11/2017 1930      THU		Date/Time To: 05/12/2017 0730      FRI					
<b>4. Operations Personnel</b>							
<b>BRANCH DIRECTOR</b>				<b>OPERATIONS CHIEF</b>		PETE MYERS	
<b>SAFETY</b>		JAMES WILLIAMS		<b>DIVISION/GROUP SUPERVISOR</b>		SHAWN STURGILL	
<b>5. Resources Assigned this Period</b>							
Strike Team / Task Force / Resource Designator		LWD	Leader		Number Persons	Drop Off PT./Time	Pick Up PT./Time
EMPF E-342		05/18	MIKE KOEPKE		1		
<b>6. Control Operations/Work Assignments:</b>							
Purpose: Keep fire West of Saint Mary's River							
Task: Prep control lines with dozers to establish or strengthen containment. Coordinate strategic firing with unified ICs. Coordinate with Structure Protection specialist on triage of structures for point protection.							
End State: Contain fire perimeter to minimize damage to both public and private infrastructure and protect resource values at risk.							
<b>7. Special Instructions:</b>							
Medical Emergency Channel: Command ETA for Ambulance to Scene: Ground: 15 mins Approved Helispot: POGO Helibase Lat: N 30 44.26 Long: W 82 07.69 <b>Primary</b> - Ambulance is ground contact with air ambulance <b>Secondary</b> - IWI- IC or approved person will use channel 16 (Air Guard) for ground contact with air ambulance							
2 - TPL Okie - O/H Donnie Harris DIVS 1 - 1050 KG - with operator GFC 1 - Appalachia 750 (Lease) with operator DIVS Blair Joiner STEQ with 3-T2 Tractor Plow STEQ (Weaver) with 4-T3 Tractor Plow							
<b>8. Division/Group Communication Summary</b>							
Function	Channel	RX Frequency N/W	RX Tone/NAC	TX Frequency N/W	TX Tone/NAC	Mode	
COMMAND	4	169.2000N	NONE	169.2000N	NONE	A	
COMMAND	5	159.465	CSQ	151.1450	123.0	A	
TACTICAL	11	163.100	CSQ	163.1000	CSQ	A	
AIR TO GROUND	14	166.675	CSQ	166.6750	CSQ	A	
AIR TO GROUND	15	169.1500	CSQ	169.1500	CSQ	A	
AIR GUARD	16	168.6250N	NONE	168.6250N	110.9	A	
<b>9. Prepared By (Resource Unit Leader)</b>			<b>Approved By (Planning Section Chief)</b>		<b>Date</b>	<b>Time</b>	
TIFFANY PATE			BRIAN ELDREDGE		05/11/2017	1300	

## Division/Group Assignment List (ICS 204 WF)

<b>1. Incident Name:</b>			<b>3.</b>			
WEST MIMS			<b>IV</b>		<b>Division/Group: NIGHT STRUCTURE</b>	
<b>2. Operational Period:</b> <span style="float: right;"><b>NIIGHT SHIFT 2000-0800</b></span>						
Date/Time From: 05/11/2017 1930      THU		Date/Time To: 05/12/2017 0730      FRI				
<b>4. Operations Personnel</b>						
<b>BRANCH DIRECTOR</b>				<b>OPERATIONS CHIEF</b>		PETE MYERS
<b>SAFETY</b>				<b>DIVISION/GROUP SUPERVISOR</b>		HAROLD KIBBE JOHN ALLBRIGHT (T)
<b>5. Resources Assigned this Period</b>						
Strike Team / Task Force / Resource Designator		LWD	Leader	Number Persons	Drop Off PT./Time	Pick Up PT./Time
TPL3 - PITTMAN'S EXCAVATION INC - L00967 E-480		05/23	RODNEY REED	2		
HEQB O-375		05/22	DENNIS HUENERGARDT	1		
TPL4 - SMR #4441 E-508		05/13	JOSH HAVIRD	1		
<b>6. Control Operations/Work Assignments:</b>						
Purpose: Ensure timely response to protect human life, property, and access.						
Task: Protect city of St. George residents and private property. Maintain contact procedures with Charlton County and Sheriff Dept to assure effective communication in event of or post community evacuation needs. Implement structure protection efforts within DIV Z, A, Branch III DIV O and N as needed. Coordinate with County EMS to determine special needs for road control access.						
End State: Maintain communications with appropriate emergency management and Law Enforcement to protect public. Confine fire perimeter to reduce threats to structures, utilities and other values at risk						
<b>7. Special Instructions:</b>						
<b>Contact Night Incident Communications for any needs. Brief/Debrief at John M Bethea State Forest with all night Divisions. Identify escape routes. Loggers will be camping at the cutting area. Patrol logging operation area for potential reburn. Work with the logging foreman on any suppression action needs within the logging area.</b>						
Medical Emergency Channel: Command ETA for Ambulance to Scene: Ground: 25 mins Approved Helispot: Drop Point 3 Lat: N 30 41.257 Long: W 82 28.833						
<b>8. Division/Group Communication Summary</b>						
Function	Channel	RX Frequency N/W	RX Tone/NAC	TX Frequency N/W	TX Tone/NAC	Mode
COMMAND	3	169.2000N	NONE	169.2000N	NONE	A
COMMAND	5	159.465	CSQ	151.1450	123.0	A
TACTICAL	13	159.4125	CSQ	159.4125	CSQ	A
AIR TO GROUND	14	166.675	CSQ	166.6750	CSQ	A
AIR TO GROUND	15	169.1500	CSQ	169.1500	CSQ	A
AIR GUARD	16	168.6250N	NONE	168.6250N	110.9	A
<b>9. Prepared By (Resource Unit Leader)</b>			<b>Approved By (Planning Section Chief)</b>		<b>Date</b>	<b>Time</b>
TIFFANY PATE			BRIAN ELDREDGE		05/11/2017	1300

**AIR OPERATIONS SUMMARY (ICS220)**

Prepared by: John Mason

Prepared Date: 5/10/2017

Prepared Time: 18:00

<b>1. INCIDENT NAME:</b> West Mims	<b>2. OPS PERIOD DATE:</b> 5/11/17	<b>START TIME:</b> 0900	<b>END TIME:</b> 2030	<b>SUNRISE:</b> 0636	<b>SUNSET TIME:</b> 2013 (Folkston)
<b>3. REMARKS Safety Notes: Hazards (SEE AND AVOID GENERAL AVIATION TRAFFIC AND AERIAL HAZARDS)</b>  -Maintain clear communications; confirm that drop location is clear; ground personnel state: "Clear to Drop" -Incident Aircraft conduct flight following with Pogo Helibase when ATGS is not up. -Aerial Ignition Group: Helicopter 7HX with PLDO; FIRB, Joe Chastain.  <b>ORDERING/FLIGHT REQUESTS</b> -Request Helicopter water drops through Air Attack -Request aerial ignition through Operations -Request Tankers/Retardant through Air Attack -Requests for Reconnaissance missions must go through Operations for pre-approval			<b>4. READY ALERT AIRCRAFT:</b>  <b>7HX</b>  Call 911 to request LIFEFLIGHT aircraft.		<b>5. TFR:</b> 7/1766; Surface to 3500' MSL; See NOTAM for full description. Frequency 120.8500
<b>E-MAIL AIRCRAFT COSTS DAILY AT END OF SHIFT TO: john_mason@fws.gov</b>					

6. PERSONNEL	NAME	PHONE #	7. FREQUENCIES	AM	FM	8. FIXED-WING- Type/ Make-Model/ N#/ Base
AOBD	Tim Faust  Air Ops Desk	702-271-6055  912-637-5133	A/A - Fixed Wing A/A - Rotor / TFR  A/G (Request) A/G 66 (Primary) A/G 72 (Secondary)	120.3500 120.8500	   169.2000 166.6750 169.1500	AIR ATTACK – ATGS – Mark Nunez / AC690 / N690RA / LCQ 805-975-5227 ATGS(T) – Derek Wheeler 530-355-3274 ATGS – Chris Worrel / Kodiak / N420Q / LCQ 850-447-4597 ATGS(T) – Mike Bot 623-696-8532
ASGS	John Mason	478-951-7319				LEAD – ASM – Bravo xx As assigned
HEB2 - Pogo HEB1 - Lake City HEB1(T) - Lake City	Marc 'Boomer' Rudkin Nate Alexander Angie Ruble	307-287-0440 406-491-0878 573-241-0604	Deck/TOLC (Pogo) Deck (Lake City)		168.0500 169.1750	TANKERS – As available (T-41) BAE146 / N471NA / LCQ (Off Fridays) (T-1) BAE146 / N473NA / LCQ (Off Sundays) (T-3) BAE146 / N475NA / LCQ (Off Tuesdays) (T-2) BAE146 / N474NA / LCQ (Off Mondays) (T-164) RJ-85A / N374AC / LCQ (Off Thursdays) (T-911) DC-10 / N17085 / CHA
	Pogo Helibase	912-496-4415				
	Lake City Helibase	561-512-6333	Air Guard		168.625 (110.9)	

**9. HELICOPTER** Remarks Box Legend: C=Cargo P=Passengers B=Bucket SN=Snorkel R=Rappel H=Hoist SH=Short Haul ME=Medical Evacuation/ Extraction Exu=Exclusive Use

FAA N#	T Y	MAKE/ MODEL	BASE	START	READY to FLY	REMARKS	FAA N#	T Y	MAKE/ MODEL	BASE	START	READY to FLY	REMARKS
27HX	3	Bell 407	Pogo (3GE1)	0700	0830	P, B Exu	611CK (701)	1	SH-3H / S-61	Lake City (LCQ)	0700	0730	SN Exu
351FW	3	AS350 B-2	Pogo (3GE1)	0700	0830	P, B Exu	612CK (702)	1	SH-3H / S-61	Lake City (LCQ)	0700	0730	SN CWN
471CH	1	CH-47D	Lake City (LCQ)	0700	0730	SN Exu	13FH	1	UH-60A	Lake City (LCQ)	0700	0730	B Exu
161KA	1	K-1200	Lake City (LCQ)	0700	0730	B Exu	137BH	1	S70A-27	Lake City (LCQ)	0700	0730	B *On Loan
699RH	1	K-1200	Lake City (LCQ)	0700	0730	B Exu	472CH	1	CH-47D	Lake City (LCQ)	0700	0730	SN *On Loan

INCIDENT RADIO COMMUNICATIONS PLAN			Incident Name West Mims Fire NIFC Radio-Group 1			Date/Time Prepared 05/10/2017 1700			Operational Period Date/Time 05/11/17 0830 - 05/12/17 0830	
Ch #	Function	Channel Name/Trunked Radio System Talkgroup	Assignment	RX Freq N or W	RX Tone/NAC	TX Freq N or W	Tx Tone/NAC	Mode A, D or M	Remarks	
1	COMMAND	WEST OKEE REP		167.1250N	156.7	163.1500N	156.7	M	STEPHEN FOSTER STATE PARK	
2	COMMAND	S. FOSTER	DIV B, C, D, FL FFS CONTINGENCY	159.1200N	NONE	151.3700N	100.0	A	WEST	
3	COMMAND	CORNELIA	DIV M/N, IA & BRANCH III-NIGHT	159.1200N	NONE	151.3700N	82.5	A	EAST	
4	AIR TO GROUND	AIR TO GRD REQUEST	ALL DIVISIONS	169.2000N	NONE	169.2000N	NONE	A	BY REQUEST ONLY	
5	COMMAND	GFC EDDY	MIMS ICP, DIV A, O, Z, BRANCH I-NIGHT, ROAD MAINT, STRUCTURE, BRANCH IV CONTINGENCY	159.4650N	NONE	151.1450N	123.0	A	WEST MIMS DISPATCH	
6	TRAVEL	GFC TAC 1	FL FFS CONTINGENCY	159.3900N	NONE	159.3900N	156.7	A	GFC MOBILE TO MOBILE	
7	TACTICAL	V FIRE 26	DIV A & ROAD MAINT	154.3025N	NONE	154.3025N	156.7	A		
8	TACTICAL	OSCEOLA PROJECT	DIV O, IA & BRANCH III-NIGHT	163.7125N	NONE	163.7125N	NONE	A		
9	TACTICAL	COMPACT	DIV B	159.2850N	NONE	159.2850N	156.7	A		
10	TACTICAL	REFUGE TAC 1	DIV M/N, BRANCH IV CONTINGENCY	168.3500N	NONE	168.3500N	NONE	A		
11	TACTICAL	REFUGE TAC 2	DIV Z	163.1000N	NONE	163.1000N	NONE	A		
12	TACTICAL	FFS 199	DIV C	159.4425N	NONE	159.4425N	NONE	A		
13	TACTICAL	FFS 200	DIV D, STRUCTURE	159.4125N	NONE	159.4125N	NONE	A		
14	AIR TO GROUND	AIR TO GRD 66	PRIMARY AIR TO GROUND	166.6750N	NONE	166.6750N	NONE	A	AIR/GROUND TACTICAL	
15	AIR TO GROUND	AIR TO GRD 72	SECONDARY AIR TO GROUND	169.1500N	NONE	169.1500N	NONE	A	AIR/GROUND TACTICAL	
16	AIR GUARD	AIR GUARD	ALL DIVISIONS	168.6250N	NONE	168.6250N	110.9	A	EMERGENCY AIRCRAFT COMMS	
Prepared By (Communications Unit) /s/ Jerry W Patrick COML					Incident Location WEST MIMS County: Clinch State: Georgia Latitude 30 34 28N Longitude 082 19 24W					

The convention calls for frequency lists to show four digits after the decimal place, followed by either an "N" or a "W", depending on whether the frequency is narrow or wide band. Mode refers to either "A" or "D" indicating analog or digital (e.g. Project 25) or "M" indicating mixed mode. All channels are shown as if programmed in a control station, mobile or portable radio. Repeater and base stations must be programmed with the Rx and Tx reversed.








## HEALTH AND SAFETY MESSAGE

*“We don’t plan on luck to be safe, we plan on sound risk management and good decisions”....the Red Team*

<b>INCIDENT:</b> West Mims Fire	<b>DATE:</b> Thursday, May 11, 2017 (Night Shift)
<b>Major Hazards &amp; Risks:</b> Fire Behavior, Heavy Equipment, Driving, Situational Awareness	
<p><b>Fire Behavior:</b> <i>A fuels advisory (<a href="https://www.predictiveservices.nifc.gov/fuels_fire-danger/fuels_advisories.htm">https://www.predictiveservices.nifc.gov/fuels_fire-danger/fuels_advisories.htm</a>) was issued for this area in April and conditions have continued to get drier and hotter. Spotting distances of three quarters of a mile to one mile have been reported on the fire when it becomes very active and makes long runs. Take time to <b>identify lookouts, communications, escape routes and safety zones.</b></i></p> <p><b>Heavy Equipment:</b> <i>Tractor plows are essential on this fire, <b>but tractors need good operators!</b> If you are an operator, take care of your health and don’t injure yourself. Logging operations adjacent to the incident are on-going and will increase in the near future. Be aware of all logging operations and vehicles exiting and entering highways.</i></p> <p><b>Driving:</b> <i>Driving continues to be the number one hazard for <b>ALL</b> resources on the incident. <b>ARE YOU RESTED?</b> Seven hours of rest are barely enough if you get it every day. <b>How many hours of sleep have you gotten in the past week?</b> If fatigue has become an issue for you, consider carpooling with others or allowing an alternate driver to fill in.</i></p> <p><b>Situational Awareness:</b> <i>Continue to maintain situational awareness for all of your resources. It’s easy to become complacent when working on the same division for several days. If you see something that doesn’t look right, communicate the concern with others.</i></p>	
 <p>18. TAKING A NAP NEAR THE FIRELINE</p>	<p style="text-align: center;"><b>Fatigue</b></p> <ul style="list-style-type: none"> <li>• Follow work/rest guidelines</li> <li>• Maintain a proper diet</li> <li>• Make haste Slowly.....</li> </ul>

*Red Team Safety Officers: Brad, Mike, Tommy, Tony, Larry & Ivan*

## INCIDENT SAFETY ANALYSIS 215a

West Mims Fire - Thursday, May 11, 2017

8. Location	9. Hazard	6. Control or Abatement Action (Engineering, Administrative, PPE, Avoidance, Education, etc)
ALL	Extreme Fire Behavior	<ul style="list-style-type: none"> <li>~ Share weather observations with all personnel assigned to division.</li> <li>~ Establish LCES.</li> <li>~ Establish "Trigger Points" to withdraw.</li> <li>~ Use "Risk Management" process prior to engaging in suppression actions, refer to page 1, IRPG.</li> <li>~ Review Fuel Advisory for FL and southeastern GA.</li> </ul>
ALL	Helicopter Operations	<ul style="list-style-type: none"> <li>~ Helicopter operations should be used for priority missions.</li> <li>~ Stay clear of all bucket drops when suppression actions are in place and allow 1 minute prior to re-entry.</li> <li>~ Pilots or air supervisor ensure ground resources are clear before bucket drops.</li> <li>~ Monitor A-G communications.</li> <li>~ Follow aviation safety guidelines in IRPG and IHOG.</li> <li>~ Ground resources advise pilot of local power lines and local visibility issues.</li> </ul>
All	Train Traffic	<ul style="list-style-type: none"> <li>~ Observe warning signs when crossing tracks.</li> <li>~ If no warning lights are posted, bring vehicle to a complete stop and check for incoming trains before crossing.</li> <li>~ Use caution when crossing tracks with low vehicles or trailers.</li> <li>~ Contact CSX to ensure awareness to fire resource locations.</li> </ul>
A, B, C, D, O, Z, Contingency, IA	Power Utilities	<ul style="list-style-type: none"> <li>~ Notify all personnel of down electrical lines.</li> <li>~ Refer to the IRPG page 24 for Power Line Safety.</li> <li>~ Always treat downed wires as energized.</li> <li>~ Identify and avoid high tension transmission lines.</li> <li>~ In high winds or areas of dense smoke, avoid areas under power lines.</li> <li>~ Be aware of utility restoration in your work area.</li> </ul>
ALL	Air Operations	<ul style="list-style-type: none"> <li>~ Follow "Aviation Watch-Out Situations" on page 44, IRPG.</li> <li>~ Don't plan on air resources for medical transport or resupply.</li> <li>~ Ensure positive communication with all air resources.</li> <li>~ Ensure communications are established with operators.</li> <li>~ During airtanker operations clear the drop zone before approach of the lead plane.</li> </ul>
All	Structure Protection & HAZMAT	<ul style="list-style-type: none"> <li>~ Review "Wildland Urban Interface" Watch outs, IRPG page 12.</li> <li>~ Use "Structure Assessment" checklist, IRPG pages 13-15.</li> <li>~ Follow "HAZMAT Incident Operations" on pages 34-36 in IRPG.</li> <li>~ Identify and avoid damaged gas service near structures.</li> </ul>
B, C	Logging Operations	<ul style="list-style-type: none"> <li>~ Stay clear of active cutting operations.</li> <li>~ If re-burns occur, stop cutting operations before entering the area.</li> <li>~ Use caution when logging equipment is in the area or traveling on the roads.</li> <li>~ Maintain communication with logging operation during operational period.</li> </ul>
ALL & ICPs	Driving & Traffic	<ul style="list-style-type: none"> <li>~ Practice "Defensive Driving" techniques traveling on all roads and city streets.</li> <li>~ Use spotters when backing.</li> <li>~ Honk horn to alert personnel when backing.</li> <li>~ Keep clutter off dash and inside cab.</li> <li>~ Follow Driving LCES (Lights, Chock blocks, Emergency brake, Seat belts).</li> <li>~ Always use headlights.</li> <li>~ Yield to pedestrians and bicycles.</li> <li>~ Observe posted speed limits.</li> <li>~ Use the 3 second rule for following distance when driving.</li> <li>~ Use chock blocks, turn wheels into hill.</li> <li>~ Avoid distractions (eating, cell phones, radio).</li> <li>~ Ensure that windshields are kept clean of dust and bugs.</li> <li>~ Use caution when traveling on roads that are impacted by smoke or dusty conditions. ~When feasible, coordinate travel to and from the hotels to ensure two or more personnel travel together to mitigate long distances.</li> </ul>



## INCIDENT SAFETY ANALYSIS 215a

ALL	Hazard Trees	<ul style="list-style-type: none"> <li>~ Follow "Hazard Tree Safety" guidelines, IRPG page 22.</li> <li>~ Post lookouts, or use a spotter in mop-up areas with personnel.</li> <li>~ Don't park vehicles or take breaks in high concentrations of hazard trees.</li> <li>~ Establish trigger points for disengagement during high wind events.</li> <li>~ Remember that the hazard zone extends a minimum of 2 1/2 tree heights.</li> </ul>
ALL	Fireline Hazards	<ul style="list-style-type: none"> <li>~ Establish and continue to validate LCES.</li> <li>~ Avoid radiant heat by wearing appropriate PPE correctly.</li> <li>~ Use correct tool for task assigned.</li> <li>~ Follow power line safety protocol as outlined on page 22 in IRPG.</li> <li>~ Flag and isolate all HAZMAT and alert all personnel working in Division.</li> <li>~ Follow WUI recommendations on pages 10-11 in IRPG.</li> </ul>
ALL	Injury & Medical Emergency	<ul style="list-style-type: none"> <li>~ Assist injured employee and provide appropriate medical care.</li> <li>~ Use EMT's on Division for initial care.</li> <li>~ Follow medical protocol as outlined in ICS-206 &amp; IRPG Pgs 99-108</li> </ul>
ALL	Firing Operations & Devices	<ul style="list-style-type: none"> <li>~ Only personnel trained in the use of each device will be authorized to use firing equipment.</li> <li>~ Ensure all personnel are aware of firing operation that may affect them.</li> <li>~ Wear appropriate PPE.</li> <li>~ Ensure aerial/ground ignition plans have been adequately developed and personnel are briefed.</li> </ul>
ALL	Communications	<ul style="list-style-type: none"> <li>~ Maintain communication with aviation resources, and suppression organization.</li> <li>~ Ensure all know frequency and protocol for contacting resources.</li> <li>~ Use clear terminology, ask questions and ensure good understanding, especially with new resources.</li> <li>~ Utilize the ICS 205.</li> <li>~ Utilize human repeaters when working in dead spots.</li> <li>~ Know who to contact in case of an emergency and practice the IWI protocol and 9 Line</li> </ul>
ALL	Heavy Equipment Operations	<ul style="list-style-type: none"> <li>~ Ensure communications are established with operators.</li> <li>~ Use hand signals if other communications are unavailable.</li> <li>~ Maintain a 50'-100' exclusion area around equipment and increase it to 1 1/2 times tree height when in timber.</li> <li>~ Use a spotter when backing.</li> </ul>
ALL	Night Operations	<ul style="list-style-type: none"> <li>~ Maintain high visibility in work area and wear vest while in roadway.</li> <li>~ Use glow sticks to mark hazards.</li> <li>~ Ensure personnel have a personal light (headlamp) and red strobe to ensure visibility.</li> <li>~ Watch for signs of fatigue.</li> <li>~ Take breaks away from areas of known hazard.</li> </ul>
ALL	Indirect Fire line	<ul style="list-style-type: none"> <li>~ Post lookouts, identify escape routes and safety zones (IRPG pg. 6).</li> <li>~ Review "Strategy/Indirect Attack" (IRPG pg. 77).</li> </ul>
ALL	Wildlife	<ul style="list-style-type: none"> <li>~ Watch out for wildlife inside fire area and along roadways including bears, alligators, snakes, hogs, and deer.</li> <li>~ Clean up all debris and trash during each operational period.</li> <li>~ Don't feed or harass the animals.</li> </ul>
A, O, N, M, Z	Fog	<ul style="list-style-type: none"> <li>~ Obey posted speed limits at all times.</li> <li>~ If driving in a convoy, maintain a safe distance between vehicles for emergency stops and distance.</li> <li>~ Don't use high beam lights while driving, it can impair the vision of the driver and oncoming traffic.</li> </ul>
ALL	Bees, Ticks, Mosquitoes, Spiders, Chiggers	<ul style="list-style-type: none"> <li>~ Canvas crew members for those with known allergic reactions to stings.</li> <li>~ Ensure crew members have medication pens if needed.</li> <li>~ Perform daily self inspection.</li> <li>~ Use repellent as necessary.</li> <li>~ Advanced Life Support, multi-dose epi and airway protection</li> <li>~ Keep affected area clean and bandaged.</li> <li>~ Be extra careful when eating and/or drinking to avoid stings to mouth and throat.</li> </ul>

# MEDICAL PLAN (ICS 206 WF)

<b>Incident/Project Name</b>			<b>1. Operational Period</b>							
<b>West Mims Fire</b>			Date/Time <b>5/11/2017 0730hrs to 0730 hrs</b>							
<b>2. Ambulance Services</b>										
<b>Name</b>	<b>Complete Address</b>		<b>Phone</b>		<b>Advanced Life Support (ALS)</b>					
Clinch County EMS	1050 Valdosta Highway Homerville GA		911		YES					
Charelston County EMS	321 Georgia Ave. St. George, GA		911		YES					
<b>3. Air Ambulance Services</b>										
<b>Name</b>	<b>Phone</b>		<b>Type of Aircraft &amp; Capability</b>							
Air Methods	888-763-1010		AS 350 With night vision capabilities							
Air Evac	888-269-6006		206 L1+ With Night Vision capability							
Trauma 1	800-223-4878		Bell 407 & EC153 both with night vision capability							
<b>4. Hospitals</b>										
	<b>DD° MM.MMM' N - Lat DD° MM.MMM' W - Long</b>		<b>Travel Time Air Gnd</b>		<b>Phone</b>		<b>Helipad Yes No</b>		<b>Level of Care Facility</b>	
Satilla Regional 410 Darling Ave. Waycross GA 31501	Lat:	N 31° 13.452	15 mins	45 mins	912-283-3030	<input checked="" type="checkbox"/>	<input type="checkbox"/>	Level III		
	Long:	W 82° 20.875								
	VHF:									
Clinch Memorial 1050 Valdosta Hwy Homerville GA 31634	Lat:	N 31° 01.975	20 mins	30 mins	912-487-5211	<input checked="" type="checkbox"/>	<input type="checkbox"/>	Level IV		
	Long:	W 82° 45.850								
	VHF:									
Ed Frazier Hospital 159 N. 3 <sup>rd</sup> St. MacClenny FL 32063	Lat:	N 30° 28.482	15 mins	45 mins	904-259-3151	<input checked="" type="checkbox"/>	<input type="checkbox"/>	Level IV		
	Long:	W 82° 11.896								
	VHF:									
Shands Jacksonville 655 West 8 <sup>th</sup> Str Jacksonville FL 32209	Lat:	N 30° 20.890	45 mins	90 mins	904-383-1015	<input checked="" type="checkbox"/>	<input type="checkbox"/>	Level I Burn Center Level I Trauma Center		
	Long:	W 81° 39.862								
	VHF:									
<b>5. Division   Branch   Group   Area Location Capability</b>										
Division A			Paul Pugh EMPF (602)376-9812							
Division B			Martin Carillo EMPF (619)933-5546							
Division C,D			Gary Allen Ford EMPF (470)532-8807							
Division M,N			Linda Kramer EMPF (616)403-1873							
Division O			Dean Carpenter EMPF with UTV (229)561-4224							
Division Z			Stan Bangs EMPF (602)980-6108							
Night Shift Branch I			Kathy Nemmers EMPF (602)885-3115							
Night Shift Branch I			Alyse Guterrez (602)505-9082							
Night Shift Branch IV			Michael Koepke EMPF (928)249-0541							
Night Shift Branch III			Kyle Port EMPF (602)410-6788							
Branch 1 Amb./ 24 hr.			Clinch Co. EMS (470)-532-8806							
Branch 3 Amb./24hr.			Golden Isles (912)602-9224							

**IWI IC Responsibilities:**

- Take charge of the scene – inform the Division Supervisor and Communications that you are the IWI IC and establish radio communications (frequencies, channels). Identify the emergency name – Division A medical, Fish Meadows medical, Highway 21 accident.
- Assign or begin patient assessment (9 Line) and first aid. Request additional medical resources on division/branch or across incident. Transmit 9 Line patient information to Communications.
- Determine patient transportation through consultation with line medical personnel and Medical Unit Leader. Consider transportation time, risk to personnel, destination facility and available operational resources. If air transport is chosen, implement the plan for alternative transportation in the event aircraft cannot complete the mission. Order transportation resources through Communications as early as possible.
- Notify Communications as resources arrive and any patient status changes. Names of injured or deceased individuals will not be transmitted on the radio.
- Initiate documentation for future investigation; if a line safety officer is available, assign them to lead documentation. Do not move deceased individuals, gear or personal effects except to accomplish rescue work or protect the safety of others. Obtain written documentation of witnesses. The Unit Log, ICS 214, may be used for the initial documentation, but a subsequent narrative will be required.
- As appropriate, conduct an After Action Review to determine successes, areas to improve and lessons learned.

<b>6. Prepared By (Medical Unit Leader)</b>	<b>7. Date/Time</b>	<b>8. Reviewed By (Safety Officer)</b>	<b>9. Date/Time</b>
Fred Adler MEDL/ Matt Laricos MEDL(T)	5/10/2017	Michael Cook	5/10/2017

# Family Faces of the Fire

Incidents of long duration provide the opportunity for members of the same family to serve on the same incident - *sometimes at the same time!*



Pictured are Wyatt's Working West Mims: Noah Wyatt (Florida Forest Service), Noah's father Chris Wyatt (Arkansas Forestry Commission) and Sarah Wyatt (U.S. Fish & Wildlife Service – Okefenokee NWR).

**We want YOUR stories & selfies! Share with us if working wildfires is a family affair.**

**Please send all photos and descriptions to:  
[okefirepio@gmail.com](mailto:okefirepio@gmail.com)**

Fire Information – Phone: 904-452-4627

Text your photos/videos to 252-216-8667 or email: [okefirepio@gmail.com](mailto:okefirepio@gmail.com)

Follow Us on Facebook: @Okefenokee National Wildlife Refuge #westmimsfire #okefenokee

Inciweb: <https://inciweb.nwcg.gov/incident/5153/>

## DEMOB LIST

05/11/2017

### CREWS

C-8	(HC1)	CREW-T1-ASHEVILLE
C-7	(CC)	CREW-CAMP-PINE KNOT JCC

### EQUIPMENT

E-151	(ENG6)	ENG6-PATRICK-E94
E-258	(ENG6)	ENGINE-T6-KY-CGP-WFM2
E-283	(ENG6)	ENG6-CROSS TIMBERS FIRE
O-284	(ENG6)	ENG6-CROSS TIMBERS FIRE
E-483	(ENG6)	ENG6-E483

### OVERHEAD

O-165	end of shift	(HMGB)	TORREALDAY, JUAN
O-189		(SEC1)	AMOROSO, PHILIP
O-191	end of shift		(PSC2)
O-228		(RADO)	ZIMMER, MARY J
O-231		(SEC2)	HOBBINS, BRIAN

05/12/2017

### EQUIPMENT

E-60	(ENG6)	ENG6 CHATTOOGA 86
E-329	(PU)	PICKUP-DNR144826

### OVERHEAD

O-188	(TNSP)	WOLF, SEAN
O-197	(TFLD)	JOHNSON, ERIK M
O-206	(DIVS)	HARRIS, DONALD
O-211	(SITL)	MARTIN, GORDON P
O-230	(SEC2)	JARRIEL, CLINT
O-243	(SOF1)	HAWKINS, TOMMY L
O-285	(INCM)	ATCHLEY, WILLIAM

IF YOU ARE TO FLY HOME PLEASE CONTACT DEMOB AT LEAST 3 DAYS BEFORE FLIGHT TIME.  
PHONE # 1-912-637-5113 EMAIL [demobwestmimsfire@gmail.com](mailto:demobwestmimsfire@gmail.com)

# MEDICAL PLAN (ICS 206 WF)

## Medical Incident Report

**FOR ALL MEDICAL EMERGENCIES: IDENTIFY ON SCENE INCIDENT COMMANDER BY NAME AND POSITION AND ANNOUNCE "MEDICAL EMERGENCY" TO INITIATE RESPONSE FROM IMT COMMUNICATIONS/DISPATCH.**

**Use items one through nine to communicate situation to communications/dispatch.**

### 1. CONTACT COMMUNICATIONS/DISPATCH

*Ex: "Communications, Div. Alpha. Stand-by for Priority Medical Incident Report." (If life threatening request designated frequency be cleared for emergency traffic.)*

### 2. INCIDENT STATUS: Provide incident summary and command structure.

<b>Nature of Injury/Illness</b>		<i>Describe the injury (Ex: Broken leg with bleeding)</i>
Incident Name		<i>Geographic Name + "Medical" (Ex: Trout Meadow Medical)</i>
Incident Commander		<i>Name of IC</i>
Patient Care		<i>Name of Care Provider (Ex: EMT Smith)</i>

### 3. INITIAL PATIENT ASSESSMENT: Complete this section for each patient. This is only a brief, initial assessment. Provide additional patient info after completing this 9 Line Report.

Number of Patients:	Male / Female	Age:	Weight:
Conscious? <input type="checkbox"/> YES <input type="checkbox"/> <b>NO = MEDEVAC!</b>			
Breathing? <input type="checkbox"/> YES <input type="checkbox"/> <b>NO = MEDEVAC!</b>			
Mechanism of Injury: <i>What caused the injury?</i>			
Lat/Long (Datum WGS84) <i>Ex: N 40° 42.45' x W 123° 03.24'</i>			

### 4. SEVERITY OF EMERGENCY, TRANSPORT PRIORITY

SEVERITY	TRANSPORT PRIORITY
<input type="checkbox"/> <b>URGENT-RED Life threatening injury or illness.</b> <i>Ex: Unconscious, difficulty breathing, bleeding severely, 2° – 3° burns more than 4 palm sizes, heat stroke, disoriented.</i>	Ambulance or MEDEVAC helicopter. Evacuation need is <b>IMMEDIATE.</b>
<input type="checkbox"/> <b>PRIORITY-YELLOW Serious Injury or illness.</b> <i>Ex: Significant trauma, not able to walk, 2° – 3° burns not more than 1-2 palm sizes.</i>	Ambulance or consider air transport if at remote location. Evacuation may be <b>DELAYED.</b>
<input type="checkbox"/> <b>ROUTINE-GREEN</b> Not a life threatening injury or illness. <i>Ex: Sprains, strains, minor heat-related illness.</i>	Non-Emergency. Evacuation considered <b>Routine of Convenience.</b>

### 5. TRANSPORT PLAN:

<b>Air Transport:</b> (Agency Aircraft Preferred)			
<input type="checkbox"/> Helispot	<input type="checkbox"/> Short-haul/Hoist	<input type="checkbox"/> Life Flight	<input type="checkbox"/> Other
<b>Ground Transport:</b>			
<input type="checkbox"/> Self-Extract	<input type="checkbox"/> Carry-Out	<input type="checkbox"/> Ambulance	<input type="checkbox"/> Other

### 6. ADDITIONAL RESOURCE/EQUIPMENT NEEDS:

<input type="checkbox"/> Paramedic/EMT(s)	<input type="checkbox"/> Crew(s)	<input type="checkbox"/> SKED/Backboard/C-Collar
<input type="checkbox"/> Burn Sheet(s)	<input type="checkbox"/> Oxygen	<input type="checkbox"/> Trauma Bag
<input type="checkbox"/> Medication(s)	<input type="checkbox"/> IV/Fluid(s)	<input type="checkbox"/> Cardiac Monitor/AED
<input type="checkbox"/> Other (i.e. splints, rope rescue, wheeled litter)		

### 7. COMMUNICATIONS:

Function	Channel Name/Number	Receive (Rx)	Tone/NAC *	Transmit (Tx)	Tone/NAC *
<i>Ex: Command</i>	<i>Forest Rpt, Ch. 2</i>	<i>168.3250</i>	<i>110.9</i>	<i>171.4325</i>	<i>110.9</i>
COMMAND					
AIR-TO-GRND					
TACTICAL					

\*(NAC for digital radio system)

### 8. EVACUATION LOCATION:

Lat/Long (Datum WGS84) <i>EX: N 40 42.45' x W 123 03.24'</i>	
Patient's ETA to Evacuation Location:	
Helispot/Extraction Size and Hazards:	

### 9. CONTINGENCY:

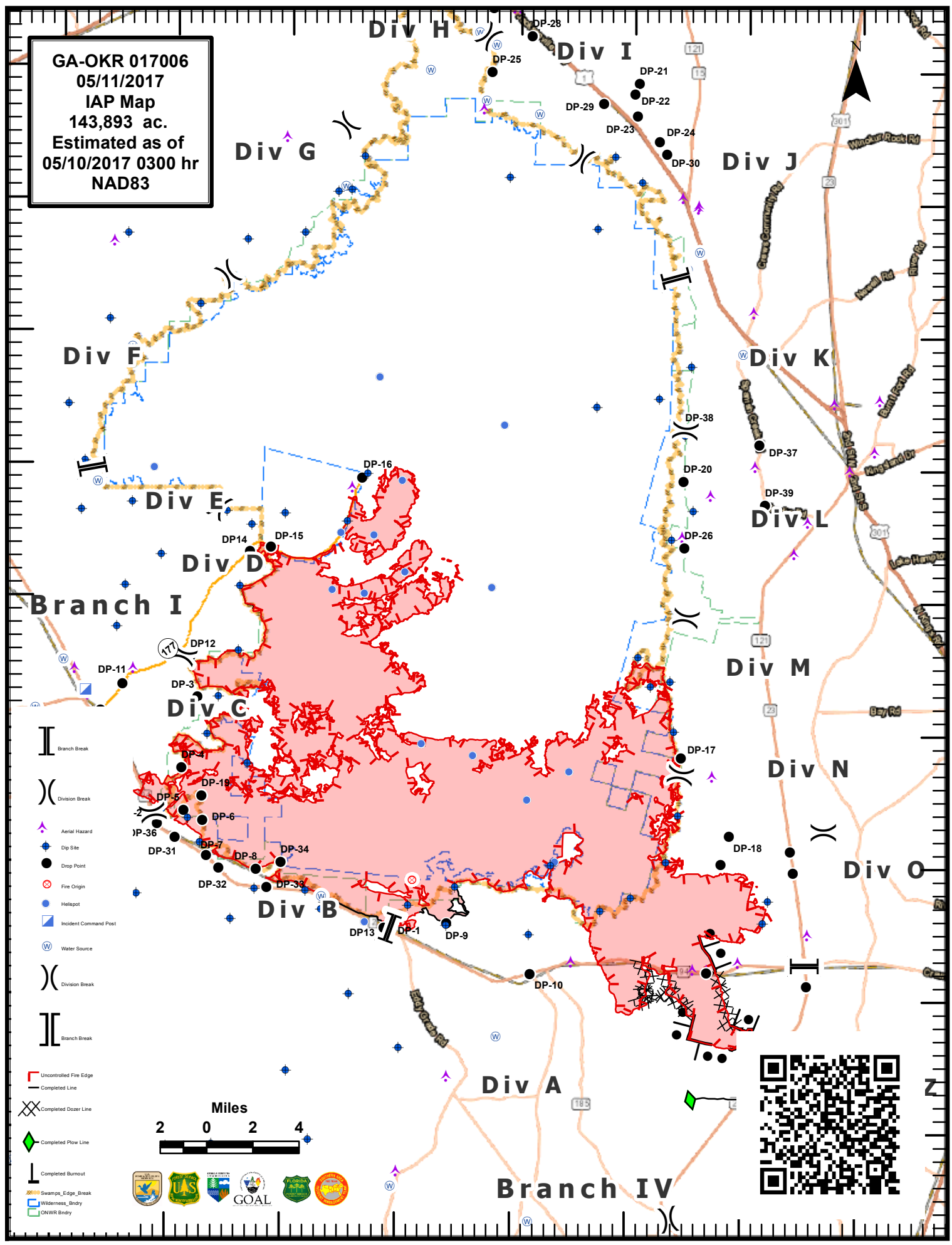
<b>Considerations:</b> <i>If primary options fail, what actions can be implemented in conjunction with primary evacuation method? Be thinking ahead...</i>	<b>REMEMBER:</b> <b>Confirm ETA's of resources ordered</b> <b>Act according to your level of training</b> <b>Be Alert. Keep Calm. Think Clearly. Act Decisively.</b>
--	--

82°35'W 82°30'W 82°25'W 82°20'W 82°15'W 82°10'W 82°5'W 82°0'W

31°5'N  
31°0'N  
30°55'N  
30°50'N  
30°45'N  
30°40'N  
30°35'N  
30°30'N  
30°25'N

31°5'N  
31°0'N  
30°55'N  
30°50'N  
30°45'N  
30°40'N  
30°35'N  
30°30'N  
30°25'N

GA-OKR 017006  
05/11/2017  
IAP Map  
143,893 ac.  
Estimated as of  
05/10/2017 0300 hr  
NAD83



- Branch Break
- Division Break
- Aerial Hazard
- Dip Site
- Drop Point
- Fire Origin
- Hellspot
- Incident Command Post
- Water Source
- Division Break
- Branch Break
- Uncontrolled Fire Edge
- Completed Line
- Completed Dozer Line
- Completed Flow Line
- Completed Burnout
- Swamps\_Edge\_Break
- Wilderness\_Bndry
- ONWR Bndry



82°35'W 82°30'W 82°25'W 82°20'W 82°15'W 82°10'W 82°5'W 82°0'W







## Medical Incident Report- "9 Line"

**FOR ALL MEDICAL EMERGENCIES: IDENTIFY ON SCENE INCIDENT COMMANDER BY NAME AND POSITION AND ANNOUNCE "MEDICAL EMERGENCY" TO INITIATE RESPONSE FROM IMT COMMUNICATIONS/DISPATCH.**

**Use items one through nine to communicate situation to communications/dispatch.**

**1. CONTACT COMMUNICATIONS/DISPATCH**

*Ex: "Communications, Div. Alpha. Stand-by for Priority Medical Incident Report." (If life threatening request designated frequency be cleared for emergency traffic.)*

**2. INCIDENT STATUS: Provide incident summary and command structure.**

<b>Nature of Injury/Illness</b>		<i>Describe the injury (Ex: Broken leg with bleeding)</i>
Incident Name		<i>Geographic Name + "Medical" (Ex: Trout Meadow Medical)</i>
Incident Commander		<i>Name of IC</i>
Patient Care		<i>Name of Care Provider (Ex: EMT Smith)</i>

**3. INITIAL PATIENT ASSESSMENT: Complete this section for each patient. This is only a brief, initial assessment. Provide additional patient info after completing this 9 Line Report.**

Number of Patients:	Male / Female	Age:	Weight:
Conscious? <input type="checkbox"/> YES <input type="checkbox"/> <b>NO = MEDEVAC!</b>			
Breathing? <input type="checkbox"/> YES <input type="checkbox"/> <b>NO = MEDEVAC!</b>			
Mechanism of Injury: <i>What caused the injury?</i>			
Lat/Long (Datum WGS84)			

**4. SEVERITY OF EMERGENCY, TRANSPORT PRIORITY**

SEVERITY	TRANSPORT PRIORITY
<input type="checkbox"/> <b>URGENT-RED Life threatening injury or illness.</b> <i>Ex: Unconscious, difficulty breathing, bleeding severely, 2° – 3° burns more than 4 palm sizes, heat stroke, disoriented.</i>	Ambulance or MEDEVAC helicopter. Evacuation need is <b>IMMEDIATE.</b>
<input type="checkbox"/> <b>PRIORITY-YELLOW Serious Injury or illness.</b> <i>Ex: Significant trauma, not able to walk, 2° – 3° burns not more than 1-2 palm sizes.</i>	Ambulance or consider air transport if at remote location. Evacuation may be <b>DELAYED.</b>
<input type="checkbox"/> <b>ROUTINE-GREEN</b> Not a life threatening injury or illness. <i>Ex: Sprains, strains, minor heat-related illness.</i>	Non-Emergency. Evacuation considered <b>Routine of Convenience.</b>

**5. TRANSPORT PLAN:**

**Air Transport:** (Agency Aircraft Preferred)

<input type="checkbox"/> Helispot	<input type="checkbox"/> Short-haul/Hoist	<input type="checkbox"/> Life Flight	<input type="checkbox"/> Other
<b>Ground Transport:</b>			
<input type="checkbox"/> Self-Extract	<input type="checkbox"/> Carry-Out	<input type="checkbox"/> Ambulance	<input type="checkbox"/> Other

**6. ADDITIONAL RESOURCE/EQUIPMENT NEEDS:**

<input type="checkbox"/> Paramedic/EMT(s)	<input type="checkbox"/> Crew(s)	<input type="checkbox"/> SKED/Backboard/C-Collar
<input type="checkbox"/> Burn Sheet(s)	<input type="checkbox"/> Oxygen	<input type="checkbox"/> Trauma Bag
<input type="checkbox"/> Medication(s)	<input type="checkbox"/> IV/Fluid(s)	<input type="checkbox"/> Cardiac Monitor/AED
<input type="checkbox"/> Other (i.e. splints, rope rescue, wheeled litter)		

**7. COMMUNICATIONS:**

Function	Channel Name/Number	Receive (Rx)	Tone/NAC *	Transmit (Tx)	Tone/NAC *
<i>Ex: Command</i>	<i>Forest Rpt, Ch. 2</i>	<i>168.3250</i>	<i>110.9</i>	<i>171.4325</i>	<i>110.9</i>
COMMAND					
AIR-TO-GRND					
TACTICAL					

\*(NAC for digital radio system)

**8. EVACUATION LOCATION:**

Lat/Long (Datum WGS84) <i>EX: N 40 42.45' x W 123 03.24'</i>	
Patient's ETA to Evacuation Location:	
Helispot/Extraction Size and Hazards:	

**9. CONTINGENCY:**

<b>Considerations:</b> <i>If primary options fail, what actions can be implemented in conjunction with primary evacuation method? Be thinking ahead...</i>	<b>REMEMBER:</b> <b>Confirm ETA's of resources ordered Act according to your level of training Be Alert. Keep Calm. Think Clearly. Act Decisively.</b>
--	--