

Incident Action Plan West Mims Fire Night

Operational Period
May 19–20, 2017
1930–0730



QR for IAP



GA-OKR-017006
FWS FFF2000000KYJ70
USFS PRKYJ717_1502 (P)
NPS PFFSKJ7017.00.1

QR for Maps



Schedule

0730 Morning Briefing
1200 C & G
1500 Pre Planning Meeting
1700 Planning Meeting
1800 Night Briefing @ Bethea



INCIDENT OBJECTIVES (ICS 202)

1. Incident Name:	2. Operational Period: NIIGHT 1930-0730	
WEST MIMS	Date/Time From: 05/19/2017 1930 FRI	Date/Time To: 05/20/2017 0730 SAT
3. Objective(s):		
<ul style="list-style-type: none"> • Provide for the safety and security of incident personnel and public in all incident operations through sound risk assessment and hazard mitigations. • Maintain a positive working relationship with all adjacent landowners, cooperators State and Federal partners. Inform, involve and communicate incident planning and operations with all partners. • Confine all fires that are within the Okefenokee National Wildlife Refuge, inside the Refuge and/or inside the swamp edge break if possible. Aggressively suppress all fire outside the swamp edge boundary. • In cooperation with local timberland owners, use full suppression strategies and tactics to minimize damage to private timberlands and improvements and to prevent fires outside the Refuge from entering the Refuge. • Assist in management and suppression of additional fires (new starts or breakouts) in the vicinity as approved by Agency Administrators and Unified Incident Commanders. • Protect all cultural and archeological sites and structures within the refuge. • Manage the fires cost-effectively consistent with the values at risk. • Implement structure protection as necessary for at-risk facilities and communities. • Coordinate suppression actions with assigned Refuge Resource Advisors to protect endangered species. • Conduct all operations in a harassment-free environment. There will be a no tolerance atmosphere for harassment, alcohol, or illegal drug use. Everyone will be treated with dignity and respect. 		
4. Operational Period Command Emphasis:		
Branch IV Keep fire East of the North Prong of St Mary's river; West of Nassau county Florida; and North of Baker county Florida Branch III Keep fire North of Hwy 94, West of St Mary's River, and South of #19 road Keep fire within the Okefenokee Refuge Swamp Edge Break Boundary. Respond to initial attack fires on new starts within: *South of Suwannee Canal *Within the Okefenokee jurisdictional boundaries *Within state properties inside Perimeter Road		
General Situational Awareness:		
Utilize confine, contain, and point source protection strategies and tactics that commit operations personnel only where and when they can be successful, under conditions where important values at risk are protected with the least exposure.		
5. Site Safety Plan Required? Yes <input type="checkbox"/> No <input checked="" type="checkbox"/>		
Approved Site Safety Plan(s) Located at:		
6. Incident Action Plan (the items checked below are included in this Incident Action Plan):		
<input checked="" type="checkbox"/> ICS 202 <input checked="" type="checkbox"/> ICS 203 <input checked="" type="checkbox"/> ICS 204 <input checked="" type="checkbox"/> ICS 205 <input type="checkbox"/> ICS 205A <input checked="" type="checkbox"/> ICS 206	<input type="checkbox"/> ICS 207 <input checked="" type="checkbox"/> ICS 208 <input checked="" type="checkbox"/> ICS 220 <input checked="" type="checkbox"/> Map/Chart <input checked="" type="checkbox"/> Weather Forecast/Tides/Currents	Other Attachments: <input checked="" type="checkbox"/> PIO MESSAGE _____ <input checked="" type="checkbox"/> FINANCE MESSAGE _____ <input checked="" type="checkbox"/> TENTATIVE DEMOB _____ <input type="checkbox"/> _____
7. Prepared by: BRIAN ELDREDGE Position/Title: PSC2	Signature:	
8. Approved by Incident Commander:	Name:	Signature:
ICS 202	IAP Page	Date/Time:

ORGANIZATION ASSIGNMENT LIST (ICS 203)

1. Incident Name:		2. Operational Period: NIIGHT 1930-0730	
WEST MIMS		Date/Time From: 05/19/2017 1930	FRI Date/Time To: 05/20/2017 0730 SAT
3. Incident Commander(s) and Command Staff:		GIS SPECIALIST	ANDREW THOMPSON, DAVID JONES; CLINT ROBERTS KEVIN WINTER, JORDAN HERRIN (T)
IC/UC	MICHAEL DUEITT; BUCK KLINE; MIKE GOICOECHEA (T)	INCIDENT METEOROLOGIST	JOE GOUDSWARD
SAFETY OFFICER	BRAD LIDELL; MICHAEL COOK; IVAN CUPP, CLAY STEPHENS (T)	FIRE BEHAVIOR ANALYST; AIR RESOURCE ADVISOR	GARY JARVIS; KELLY CAGLE, MATT FILBERT (T) DAN BYRD; THSP-ARA
INFORMATION OFFICER	CATHERINE HIBBARD; BONNIE STRAWSER; MICHAEL DAVIS (T)	6. Logistics Section:	
LIAISON OFFICER	JD LEE, KEITH LAWRENCE ANDY GASTON	CHIEF	JOHNNY SMITH
4. Agency/Organization Representative(s):		LOGS CHIEF EAST	MICHAEL BURCHARD MARK MORGAN (T)
Agency/Organization	Name	SERVICE BRANCH DIRECTOR	JOE WALKER
GFC PROTECTION	FRANK SORRELLS	SUPPORT BRANCH DIRECTOR - NIGHT	JOHN BELLMORE
OKE REF MGR/ASSIST	MICHAEL LUSK; SARA CLARDY	SUPPLY UNIT	TEDDY MESSENGER - W RON ZABKA - E
OKE REF FMO	REESE KERBOW	FACILITIES UNIT	KEITH PLAGEMANN
GOAL	JIM BARRETT	GROUND SUPPORT UNIT	PATRICK WRIGHT; CHARLES WEATHERS
FLDOF	JOHN RAULERSON	COMMUNICATIONS UNIT	JERRY PATRICK;
GEMA	DIANE ADAMS	MEDICAL UNIT	RICH DORAZIO
NORFOLK SOUTHERN	CHAD EDWARDS	COMT	KELLY TOWE; ROGER MENARD
CLINCH CO EMA	WILL JOYCE; RANDY PATTEN	FOOD UNIT	JIM LOWE
CHARLTON CO EMA	BRUCE YOUNG	ORDM	NINA GAINEY TAMARA KLINDT
GADOT	TREVOR BROWN	RCDM	JOHN HAWKINS MARC PRATT (T)
NCFS	GREG SMITH	EQPM	KIRBY HENNINSSSEN; JASON MCHAN; JIM GACEY
NASSAU COUNTY EMS	BILLY E STEP	RADO	
5. Planning Section:		JOHN BETHEA STAGING AREA - BCMG (DAY)	JAWANA STEPHENS (T)
CHIEF	BRIAN ELDREDGE TERRY PIERCE	JOHN BETHEA STAGING AREA - BCMG (NIGHT)	BEN REICK
PSC2	JASON BRAUNSTEIN (T)	JOHN BETHEA STAGING AREA - STAM	ADAM DRUMMER
RESOURCES UNIT	MISSY FORDER; DONNA THOMAS; TIFFANY PATE SCOTT WELLS; TOM WINSHIP; JEFF TURNER (T)	JOHN BETHEA STAGING AREA - EQMG	JOHN STRONG
STATUS CHECKIN	CARLA ROBERTS JESSICA VALDEZ SHANEEN MOORE (T), BRANDEN TOLVER (T)	JOHN BETHEA STAGING AREA - CREW BOSS	JAWANA SAMPSON
SITUATION UNIT	TERRY BOWERMAN KEVIN HIERS (T)	7. Operations Section:	
DEMOBILIZATION UNIT	KAREN DAVIS, DAVID BROWN DALE WINE (T)		
DOCUMENTATION UNIT	JAN FLEMING		
ITSS	TONY FARMER, CORY NICOLSON TERRANCE CHAPLIN (T)		
TRAINING SPECIALIST	LARRY MOORE, JR BRAD STEWART		
9. Prepared By:	Name: MISSY FORDER	Position/Title: RESL	Signature:
ICS 203	IAP Page	Date/Time: 05/19/2017 1454	

ORGANIZATION ASSIGNMENT LIST (ICS 203)

1. Incident Name:		2. Operational Period: NIIGHT 1930-0730	
WEST MIMS		Date/Time From: 05/19/2017 1930	Date/Time To: 05/20/2017 0730
		FRI	SAT
OPS SECTION CHIEF	JIM DURRWACHTER; LARRY SMITH (T) SHANNON BOWMAN(T), BEALE MONDAY (T)	DIVISION/GROUP	L SAMMY E MCFARLAND, SEAN BASS (T) JEFFREY BOSTWICK (T)
PLANNING OPS (BRANCH I)	STEVE WEAVER PHIL DANIELS (T), JEREMY BRAND (T)	DIVISION/GROUP	M B. BROWNING,J. FORTHOFER S. MCFARLAND;J. LAGO (T)
PLANNING OPS (BRANCH III AND IV)	MARK CRAIN MICHAEL DAVIS (T)		
NIGHT OPS SECTION CHIEF (BRANCH I)	JAMES SCHWARTZ	DIVISION/GROUP	N KAREN SCHOLL CHRIS RANKIN (T)
NIGHT OPS SECTION CHIEF (III AND IV)	ROBERT LAENG	DIVISION/GROUP	O ROBERT THORP, BRANDON HUGHES (T) MICHAEL GUE (T)
Branch	I		
BRANCH DIRECTOR DAY	RON GARCIA		
BRANCH DIRECTOR NIGHT	LANCE DELGADO		
DIVISION/GROUP	DIV B	TIM STILTNER; RONNIE RUCKER DAVID QUESINBERRY (T), KEITH FIELDS (T)	DIVISION/GROUP DIV NIGHT K/L KRIS CRODDY
DIVISION/GROUP	DIV C	BERT PLANTE	DIVISION/GROUP DIV NIGHT M/N/O SHANE STURGILL ADRIAN PORCHAS (T)
DIVISION/GROUP	DIV D	JOEL BURGETT; HEATHER GRIFFIN	
DIVISION/GROUP	DIV E/F	GREG TOLL, SHELLY CROOK CHAD STOVER (T)	Branch IV
DIVISION/GROUP	FL FFS CONTINGENCY	GLEN DAVIS; JOHN RAULERSON	PLANNING OPERATIONS CHEIF MARC CRAIN MIKE DAVIS (T)
DIVISION/GROUP	WEST ROAD MAINTENANCE	CANDIC KUTROSKY	BRANCH DIRECTOR STEVE MILLER
DIVISION/GROUP	DIV NIGHT B/C	HAROLD L KIBBE	NIGHT BRANCH DIRECTOR ROBERT TRINCADO BRYCE THOMAS (T)
DIVISION/GROUP	DIV NIGHT D/E	JAMES LICO	DIVISION/GROUP A JAMES ROURKS
DIVISION/GROUP	NIGHT STRUCTURE	KRIS CRODDY	DIVISION/GROUP CONTINGENCY BLAIR JOINER CHAD WILLIAMSON
Branch	II		DIVISION/GROUP Y JOE MORRIS
BRANCH DIRECTOR	NATE GOGNA		DIVISION/GROUP Z JIMMY FLANNAGAN JEFF NEAL (T)
Branch	III		DIVISION/GROUP DIV NIGHT A/Y/Z JOHN MOLVE MATT HASKINS (T)
PLANNING OPERATIONS CHIEF	MARC CRAIN MIKE DAVIS (T)		DIVISION/GROUP NIGHT STRUCTURE PROTECTION UNSTAFFED
BRANCH DIRECTOR	RON SMITH	7b. Air Operations Branch:	
BRANCH DIRECTOR NIGHT	ROBERT TRINCADO SCOTT THOMAS (T)	AIR OPS BRANCH DIRECTOR	TIM FAUST
DIVISION/GROUP	DAY STRUCTURE PROTECTION	DEPUTY AIR OPS BRANCH DIRECTOR	BRAD BERNARDY
DIVISION/GROUP	IA	AIR SUPPORT GROUP SUPERVISOR	JOHN MASON
DIVISION/GROUP	K	AIR ATTACK SUPERVISOR	CHRIS WORRELL, LARRY V MARS DEREK WHEELER (T)
		HEB1 POGO	MARC RUDKIN
9. Prepared By:	Name: MISSY FORDER	Position/Title: RESL	Signature:
ICS 203	IAP Page	Date/Time: 05/19/2017 1454	

ORGANIZATION ASSIGNMENT LIST (ICS 203)

1. Incident Name:		2. Operational Period: NIIGHT 1930-0730	
WEST MIMS		Date/Time From: 05/19/2017 1930 FRI	Date/Time To: 05/20/2017 0730 SAT
8. Finance/Administration Section:			
CHIEF	BONNY JOHNSON		
DEPUTY	JAMES MEREDITH		
PROCUREMENT UNIT	P. J. VILHAUER CRAIG ERICSON (T)		
CONTRACTING OFFICER	THERESA HOOD		
EQUIPMENT TIME RECORDER	SONYA YARA, TAMMY RUSSELL RANDY TOTTEN (T)		
COST UNIT	CAROLYN DETWILER; JENNY CROSS (T)		
TIME UNIT	JEAN FRICK		
PERSONNEL TIME RECORDER	BECKY HOPKINS, TRISH KITSMILLER SARA RANDOLPH (T)		
COMPENSATION UNIT	VERMA COLEMAN		
9. Prepared By:	Name: MISSY FORDER	Position/Title: RESL	Signature:
ICS 203	IAP Page	Date/Time: 05/19/2017 1454	



To: All Incident Personnel, West Mims Fire 2017

As the Unified Command Incident Commanders, we have a policy of “zero tolerance” of inappropriate behavior during incident operations. Any form of harassment, discriminatory practices, or disrespectful behavior will not be tolerated. Known or reported acts will be dealt with appropriately.

We are particularly concerned about the perception that alcohol has a place in any of the Incident facilities. It is not appropriate to indulge in alcoholic beverages during any fire assignment.

The National Team from the Southern Region has a policy of “NO ALCOHOL” from the time of dispatch until the time of physical release from the Incident. Members of the Team voluntarily comply with this policy; all incident personnel will be expected to do so also.

We endorse, support, and expect an attitude of mutual respect for all Incident personnel and the public we serve. We also, endorse the attitude and work ethic that places “Safety First, every time on every Incident.” We expect nothing less.

/s/ Mike Dueitt
/s/ Rick Dolan
/s/ Buck Kline
Incident Commanders



Fire Weather Forecast



FORECAST NO: 42
PREDICTION FOR: Friday Night
SHIFT DATE: May 19-20, 2017
FORECAST ISSUED: 1400 May 19, 2017

NAME OF FIRE: West Mims Fire
UNIT: Okefenokee National Wildlife Refuge
Incident Meteorologist: Joe Goudsward 240-778-5279

DISCUSSION:

The upper level high pressure that has been the dominant weather feature of late is continuing to break down with moisture levels continuing to increase. Precipitation chances return to the forecast mainly Saturday afternoon with a slight chance of showers and thunderstorms. ESE winds will prevail once again with some higher gusts expected for a few hours after sunset. Some patchy ground fog is still possible around sunrise and shortly after. Overnight temperatures will be up a little bit and expected to bottom out in the mid to upper 60s.

TONIGHT (FRIDAY NIGHT SHIFT):

- WEATHER: Partly to mostly cloudy. Patchy ground fog possible around sunrise.
- WIND (20 FT): SE 6 to 10 mph early with a few gusts near 15 mph. Winds decreasing to 2 to 4 mph by morning.
- MIN TEMPERATURES: 65-70 MAX RH: 95-100% MAX LVORI: 10
- LAL: 1 CHANCE RAIN: 0% RAINFALL: 0

SATURDAY (SATURDAY DAY SHIFT):

- WEATHER: Patchy ground fog possible early, otherwise partly to mostly cloudy. A slight chance of mainly afternoon showers and thunderstorms.
- WIND (20 FT): ESE 6 to 10 mph. Gusts up to 15 mph in the afternoon.
- MAX TEMPERATURES: 91-95 MIN RH: 38-43%
- LAL: 1 CHANCE OF RAIN: 20% DISPERSION (MAX): 60
- MIXING HEIGHT: 6000 RAINFALL: <.10" TRANSPORT WINDS: SE 12 mph

HOURLY WEATHER FORECAST (LST) Friday 2000 through Saturday 1800

Time	2000	2200	2400	0200	0400	0600	0800	1000	1200	1400	1600	1800
Temp °F	82	73	72	71	70	68	69	78	86	89	92	88
RH %	57	74	84	90	95	100	97	67	55	44	39	46
Wind Dir	E	E	SE	SE	SE	ESE	ESE	ESE	ESE	ESE	E	E
Wind Spd mph	9	8	5	3	3	3	3	6	7	8	8	8
Wind Gst mph	12								10	12	12	12
Rain Chance%	0	0	0	0	0	0	0	0	20	20	20	20
Weather					Fog	Fog	Fog		Tstms	Tstms	Tstms	Tstms

Tstms = Thunderstorms

Sunrise Friday: 6:33 am

RAWS Observations:

Jones
Island



Eddy
Tower



OKE
East



OKE
NW



FIRE BEHAVIOR FORECAST

FORECAST NUMBER: #32	TYPE OF FIRE: Wildland
FIRE NAME: West Mims	OPERATIONAL PERIOD: 05/19/2017 Night Operational Period
DATE ISSUED: 05/19/2017	TIME ISSUED: 1100
UNIT: Okefenokee National Wildlife Refuge	WRITTEN: Kelly Cagle FBAN (t) Signed: Gary Jarvis FBAN 336-302-0343 251-288-1084

FUEL ASSUMPTIONS: The major fuel types found in the West Mims Fire are fuel model SH6 (Brush), Fire Behavior Prediction System Fuel model 7 (Southern Rough) and fuel model 8 (Timber litter). High risk fuels include pine plantations with palmetto/gallberry understory (FM7). Current fuel conditions are favorable for very active fire behavior within all fuel types. Expect all fuels to burn readily, including those that appear green. Reburn is occurring in areas where needle cast from scorch has occurred.

WEATHER SUMMARY: Partly to mostly cloudy. Patchy ground fog possible around sunrise.
 WIND (20 FT): SE 6 to 10 mph early, w/ gusts to 15 mph but decreasing after sunset. (2 to 4 mph by morning)
 MIN TEMPERATURES: 65-70 MAX RH RH: 95-100%
 LAL: 1 CHANCE OF RAIN: 0% AMOUNT: 0% MAX LVORI 10

General Fire Behavior Forecast: Drought conditions persist across the fire area. Live fuel moistures continue to be low making the live shrubs and trees available to burn. Fire will easily spread into the canopy when ladder fuels are present; expect long range spotting when this occurs. Be very cautious when critical fire behavior thresholds are exceeded - fires will become very resistant to control with ground resources and will require the combination of aerial and ground resources to be effective in controlling fires. Potential exists for rapid development and growth of any new starts.

Critical fire behavior thresholds:
Temp >90°, RH < 40%, Dispersion index greater than 60

Specific: Branch 1 and 2 (west side) have the highest potential for fire activity due to east winds. As the weather conditions remain dry, expect the swampy areas that did not burn to potentially heat back up. Ground fire and reburn were occurring in this branch yesterday near Billy's/Honey/Strange Island. Expect that to continue. Branch 3 and 4 (east side) – Ground fire and reburn were occurring yesterday near the Yankee/Zulu division break. Expect that to continue. Unburned pockets of interior fuels could begin to consume as well. Initial Attack should plan for activity. New fires have potential to develop deceptively quickly. Any divisions with active logging equipment have increased risk of initial attack. All divisions – Nighttime activity will begin to subside as RH's climb above 80% around midnight. Also – be aware that ground fire is becoming more prevalent. This will increase re-burn potential.

Fuel Type	Rates of Spread	Flame Length	Spotting Distance	Probability of Ignition	Torching / Crowning Potential / Flame Lengths
Winds at 5 and 8 mph @ 20'					
Southern Rough (palmetto/gallberry)	10-19 ch/hr.	3-8 feet	.2 mile	40%	Torching possible with 10+ mph gusts
Timber Litter (pine litter reburn)	1-2 ch/hr.	1-2 feet	100 feet	40%	Not Likely
Brush (Swamp)	5-9 ch/hr.	3-6 feet	.2 mile	40%	Torching unlikely without wind

One hour fine dead fuel moisture will be approx. 9% at 2200 hours. 10 hour fuels will be around 10% at 2200 hours. These fuel moistures will rise during the night as RH's increase.

AIR OPERATIONS: N/A

FIRE BEHAVIOR SAFETY: Ground fire can burn you if stepped in! It could be hard to see heat in the ground after dark. Identify/flag ground fire locations to prevent others from being injured.

Reference: 1 chain = 66 feet, 20 chains = .25 mile, 40 chains = .50 mile, 60 chains = .75 mile, 80 chains = 1 Mile

IA Protocol

- Determine LAT/LONG.
- Notify OSC and/or OPBD.
- OSC/OPBD will notify Unified IC's for approval to assist with ground or aviation resources.

In Georgia:

Southern Response Dispatch (229) 386-3846

If no contact-Buck Kline (912) 678-2694

In Florida-

Lake City (Baker, Columbia, and Hamilton Counties): (386) 243-6243

Jacksonville (Nassau County): (904) 266-8351

If no contact-Rick Dolan (352) 353-5101

For OKR-

Brantley Boatright Dispatch (912) 496-7366 x 230
or (912) 276-0023

Division/Group Assignment List (ICS 204 WF)

1. Incident Name:			3.			
WEST MIMS			I		Branch:	
2. Operational Period: NIIGHT 1930-0730					Division/Group:	
Date/Time From: 05/19/2017 1930 FRI		Date/Time To: 05/20/2017 0730 SAT		NIGHT DIV B/C		
4. Operations Personnel						
OPERATIONS CHIEF		JAMES SCHWARTZ		BRANCH DIRECTOR		
				ROBERT DELGADO		
SAFETY		RON BERTSCH 706-515-5625		DIVISION/GROUP SUPERVISOR		
				HAROLD KIBBE		
5. Resources Assigned this Period						
Strike Team / Task Force / Resource Designator		LWD	Leader	Number Persons	Drop Off PT./Time	Pick Up PT./Time
ENG6 - CRANE'S WILDLAND FIRE RESPONSE - 125996 E-150		05/31	SHAWN MODICA	2	DP 35/1930	DP 35/0730
ENG6 - PATRICK - E95 E-147		06/07	BEN CASTLE	3	DP 35/1930	DP 35/0730
ENG6 - PATRICK - E94 E-151		06/01	WILLIAM MURPHY	3	DP 35/1930	DP 35/0730
ENG6 - PATRICK ENVIRONMENTAL E94 E-151		06/01	WADE KEMP	3	DP 35/1930	DP 35/0730
ENG6 - KY-KYS - 410 E-661		05/26	KEVIN RADSCHWIT	2	DP 35/1930	DP 35/0730
ENG6 - KY-KYS - 110 E-658		05/26	DENNIS W WOOLARD	2	DP 35/1930	DP 35/0730
TPL3 - GFC3195 E-684		05/26	MATTHEW WILSON	1	DP 35/1930	DP 35/0730
TPL4 - GFC3201 E-685		05/26	BILLY BROWN II	1	DP 35/1930	DP 35/0730
TPL4 - GFC1029 E-686		05/26	JUSTIN JORDAN	1	DP 35/1930	DP 35/0730
TFLD O-384		05/21	RICHARD SACK	1	DP 35/1930	DP 35/0730
STEQ O-563		05/26	DANIEL GORE	1	DP 35/1930	DP 35/0730
EMPF E-352 602-885-3115		05/23	KATHY NEMMERS	1	DP 35/1930	DP 35/0730
6. Control Operations/Work Assignments:						
Purpose: Provide transitional support to day shift operations. Keep fire within fire control lines.						
Task: Patrol lines in Div B and C						
Monitor fire activity and take appropriate action to contain to reduce hotspots and maintain containment.						
End State: Confine fire consistent with protecting structures, private timberlands, and resource values at risk.						
7. Special Instructions:						
8. Division/Group Communication Summary						
Function	Channel	RX Frequency N/W	RX Tone/NAC	TX Frequency N/W	TX Tone/NAC	Mode
AIR TO GROUND	4	169.2000N	NONE	169.2000N	NONE	A
COMMAND	8	159.2700N	156.7	151.1000N	123.0	A
TACTICAL	12	159.4425N	NONE	159.4425N	NONE	A
AIR TO GROUND	14	166.6750N	NONE	166.6750N	NONE	A
AIR TO GROUND	15	169.1500N	NONE	169.1500N	NONE	A
AIR GUARD	16	168.6250N	NONE	168.6250N	110.9	A
9. Prepared By (Resource Unit Leader)			Approved By (Planning Section Chief)		Date	Time
MISSY FORDER			BRIAN ELDREDGE		05/18/2017	1614

Division/Group Assignment List (ICS 204 WF)

1. Incident Name:			3.						
WEST MIMS			I	Branch:		Division/Group:			
2. Operational Period: NIIGHT 1930-0730				NIGHT DIV B/C					
Date/Time From: 05/19/2017 1930 FRI		Date/Time To: 05/20/2017 0730 SAT							
4. Operations Personnel									
OPERATIONS CHIEF		JAMES SCHWARTZ		BRANCH DIRECTOR		ROBERT DELGADO			
SAFETY		RON BERTSCH 706-515-5625		DIVISION/GROUP SUPERVISOR		HAROLD KIBBE			
7. Special Instructions:									
<p>Contact Night Incident Communications for any needs. Brief/Debrief at John M Bethea State Forest with all night Divisions. Identify escape routes. Loggers will be camping at the cutting area. Patrol logging operation area for potential reburn. Work with the logging foreman on any suppression action needs within the logging area.</p> <p>Medical Emergency Channel: Command ETA for Ambulance to Scene: Ground: 25 mins Approved Helispot: Drop Point 3 Lat: N 30 41.257 Long: W 82 28.833</p> <p>For IA protocol see page 8</p>									
8. Division/Group Communication Summary									
Function	Channel	RX Frequency N/W	RX Tone/NAC	TX Frequency N/W	TX Tone/NAC	Mode			
AIR TO GROUND	4	169.2000N	NONE	169.2000N	NONE	A			
COMMAND	8	159.2700N	156.7	151.1000N	123.0	A			
TACTICAL	12	159.4425N	NONE	159.4425N	NONE	A			
AIR TO GROUND	14	166.6750N	NONE	166.6750N	NONE	A			
AIR TO GROUND	15	169.1500N	NONE	169.1500N	NONE	A			
AIR GUARD	16	168.6250N	NONE	168.6250N	110.9	A			
9. Prepared By (Resource Unit Leader)			Approved By (Planning Section Chief)			Date		Time	
MISSY FORDER			BRIAN ELDREDGE			05/18/2017		1614	

Division/Group Assignment List (ICS 204 WF)

1. Incident Name:			3.			
WEST MIMS			Branch:		Division/Group:	
2. Operational Period:			I			
NIIGHT 1930-0730						
Date/Time From: 05/19/2017 1930 FRI		Date/Time To: 05/20/2017 0730 SAT		NIGHT SHIFT D/E		
4. Operations Personnel						
OPERATIONS CHIEF		JAMES SCHWARTZ		BRANCH DIRECTOR		ROBERT DELGADO
SAFETY		DARROLL ABEYTA 505-470-2012		DIVISION/GROUP SUPERVISOR		JAMES LICO
5. Resources Assigned this Period						
Strike Team / Task Force / Resource Designator		LWD	Leader	Number Persons	Drop Off PT./Time	Pick Up PT./Time
TFLD O-380		05/21	WILLIAM K HARRIS	1	DP 35/1930	DP 35/0730
ENG6 - UNIT #9663 - SMITHVILLE TF6 E-259		05/25	COLTON CURLES	3	DP 35/1930	DP 35/0730
ENG6 - NC-NCF E-691 E-255		05/27	CODY TROUT THOMAS	3	DP 35/1930	DP 35/0730
ENG6 - NC-NCF E-621 E-256		05/20	JASON BOONE	3	DP 35/1930	DP 35/0730
ENG6 - KY-KYS - 111 E-659		05/25	STEVE HAMMOND	2	DP 35/1930	DP 35/0730
ENG6 - KY-KYS - 310 E-660		05/25	ADAM R MCGUIRE	2	DP 35/1930	DP 35/0730
ENG6 - ENGINE - 4-86 E-610		05/25	MURRAY ROSENGARTEN	3	DP 35/1930	DP 35/0730
ENG6 - ENGINE - 4-87 E-613		05/25	JESSE CAUSER	3	DP 35/1930	DP 35/0730
ENG6 JEMEZ 631 E-763		05/28	BRIAN E BOLSER	3	DP 35/1930	DP 35/0730
ENG6 LNF621 E-765		05/30	KODY STONER	3	DP 35/1930	DP 35/0730
ENG6 E-773		05/28	MELISSA FRIESS	3	DP 35/1930	DP 35/0730
TFLD O-654		05/29	JOSH CANTRELL	1	DP 35/1930	DP 35/0730
EMPF E-315 602-505-9082		05/23	ALYSE GUTIERREZ	1	DP 35/1930	DP 35/0730
6. Control Operations/Work Assignments:						
Purpose: Provide transitional support to day shift operations. Keep fire within fire control lines.						
Task: Patrol lines in DIV D and E. Monitor fire activity and take appropriate action.						
End State: Confine fire consistent with protecting structures, private timberlands, and resource values at risk.						
7. Special Instructions:						
8. Division/Group Communication Summary						
Function	Channel	RX Frequency N/W	RX Tone/NAC	TX Frequency N/W	TX Tone/NAC	Mode
COMMAND	2	159.1200N	NONE	151.3700N	100.0	A
AIR TO GROUND	4	169.2000N	NONE	169.2000N	NONE	A
TACTICAL	9	159.2850N	NONE	159.2850N	156.7	A
AIR TO GROUND	14	166.6750N	NONE	166.6750N	NONE	A
AIR TO GROUND	15	169.1500N	NONE	169.1500N	NONE	A
AIR GUARD	16	168.6250N	NONE	168.6250N	110.9	A
9. Prepared By (Resource Unit Leader)			Approved By (Planning Section Chief)		Date	Time
MISSY FORDER			BRIAN ELDRIDGE		05/18/2017	1614

Division/Group Assignment List (ICS 204 WF)

1. Incident Name:			3.			
WEST MIMS			I	Branch:		Division/Group:
2. Operational Period: NIGHT 1930-0730				NIGHT SHIFT D/E		
Date/Time From: 05/19/2017 1930 FRI		Date/Time To: 05/20/2017 0730 SAT				
4. Operations Personnel						
OPERATIONS CHIEF		JAMES SCHWARTZ		BRANCH DIRECTOR		ROBERT DELGADO
SAFETY		DARROLL ABEYTA 505-470-2012		DIVISION/GROUP SUPERVISOR		JAMES LICO
7. Special Instructions:						
<p>Contact Night Incident Communications for any needs. Brief/Debrief at John Bethea State Forest with all night Divisions. Identify escape routes. Loggers will be camping at the cutting area. Patrol logging operation area for potential reburn. Work with the logging foreman on any suppression action needs with logging area.</p> <p>Medical Emergency Channel: Command ETA for Ambulance to Scene: Ground: 25 mins Approved Helispot: Drop Point 3 Lat: N 30 41.257 Long: W 82 28.833</p> <p>For IA protocol see page 8</p>						
8. Division/Group Communication Summary						
Function	Channel	RX Frequency N/W	RX Tone/NAC	TX Frequency N/W	TX Tone/NAC	Mode
COMMAND	2	159.1200N	NONE	151.3700N	100.0	A
AIR TO GROUND	4	169.2000N	NONE	169.2000N	NONE	A
TACTICAL	9	159.2850N	NONE	159.2850N	156.7	A
AIR TO GROUND	14	166.6750N	NONE	166.6750N	NONE	A
AIR TO GROUND	15	169.1500N	NONE	169.1500N	NONE	A
AIR GUARD	16	168.6250N	NONE	168.6250N	110.9	A
9. Prepared By (Resource Unit Leader)			Approved By (Planning Section Chief)		Date	Time
MISSY FORDER			BRIAN ELDRIDGE		05/18/2017	1614

Division/Group Assignment List (ICS 204 WF)

1. Incident Name:			3.			
WEST MIMS			I		Division/Group: NIGHT STRUCTURE	
2. Operational Period: NIIGHT 1930-0730						
Date/Time From: 05/19/2017 1930 FRI		Date/Time To: 05/20/2017 0730 SAT				
4. Operations Personnel						
OPERATIONS CHIEF		JAMES SCHWARTZ		BRANCH DIRECTOR		ROBERT DELGADO
SAFETY		RON BERTSCH 706-515-5625 DARROLL ABEYTA 505-470-2012		DIVISION/GROUP SUPERVISOR		CHRIS OBRIEN
5. Resources Assigned this Period						
Strike Team / Task Force / Resource Designator		LWD	Leader	Number Persons	Drop Off PT./Time	Pick Up PT./Time
ENG6 - 5670 E-726		05/27	BRANDON RAMIREZ	2	DP 35/1930	DP 35/0730
ENG6 IN ENGINE - 5671 E-727		05/27	MICHAEL GRISMER	2	DP 35/1930	DP 35/0730
ENG66 - FOUNTAIN FIRE - 243 E-770		05/29	MIKE COBB	3	DP 35/1930	DP 35/0730
ENG6 - 104719 - TYPE6 E-725		05/29	WILLIAM GRIFFITH	3	DP 35/1930	DP 35/0730
ENG6 - STONEWALL FPD - ENGINE 435 E-772		05/28	KEVIN YEATTS	3	DP 35/1930	DP 35/0730
ENG6 J3 CONTRACTING - 14 - VIN# 13309 E-734		05/31	MATT FREDERICK	3	DP 35/1930	DP 35/0730
TFLD O-594		05/29	MIKE SMITH	1	DP 35/1930	DP 35/0730
6. Control Operations/Work Assignments:						
Purpose: Provide transitional support to day shift operations. Keep fire within fire control lines.						
Task: Ensure structure protection measures are in place within Branch I. Monitor fire activity and take appropriate action to contain hotspots. Coordinate with mutual aid resources.						
End State: Confine fire consistent with protecting structures, private timberlands, and resource values at risk.						
7. Special Instructions:						
Contact Night Incident Communications for any needs. Brief/Debrief at John M Bethea State Forest with all night Divisions. Identify escape routes. Loggers will be camping at the cutting area. Patrol logging operation area for potential reburn. Work with the logging foreman on any suppression action needs within the logging area.						
Medical Emergency Channel: Command ETA for Ambulance to Scene: Ground: 25 mins						
8. Division/Group Communication Summary						
Function	Channel	RX Frequency N/W	RX Tone/NAC	TX Frequency N/W	TX Tone/NAC	Mode
COMMAND	2	159.1200N	NONE	151.3700N	100.0	A
AIR TO GROUND	4	169.2000N	NONE	169.2000N	NONE	A
COMMAND	8	159.2700N	156.7	151.1000N	123.0	A
TACTICAL	10	168.3500N	NONE	168.3500N	NONE	A
AIR TO GROUND	14	166.6750N	NONE	166.6750N	NONE	A
AIR TO GROUND	15	169.1500N	NONE	169.1500N	NONE	A
AIR GUARD	16	168.6250N	NONE	168.6250N	110.9	A
9. Prepared By (Resource Unit Leader)			Approved By (Planning Section Chief)		Date	Time
MISSY FORDER			BRIAN ELDREDGE		05/18/2017	1614

Division/Group Assignment List (ICS 204 WF)

1. Incident Name:			3.				
WEST MIMS			I	Branch:		Division/Group:	
2. Operational Period: NIIGHT 1930-0730				NIGHT STRUCTURE			
Date/Time From: 05/19/2017 1930 FRI		Date/Time To: 05/20/2017 0730 SAT					
4. Operations Personnel							
OPERATIONS CHIEF		JAMES SCHWARTZ		BRANCH DIRECTOR		ROBERT DELGADO	
SAFETY		RON BERTSCH 706-515-5625 DARROLL ABEYTA 505-470-2012		DIVISION/GROUP SUPERVISOR		CHRIS OBRIEN	
7. Special Instructions:							
<p>Approved Helispot: Drop Point 3 Lat: N 30 41.257 Long: W 82 28.833</p> <p>For IA protocol see page 8</p>							
8. Division/Group Communication Summary							
Function	Channel	RX Frequency N/W	RX Tone/NAC	TX Frequency N/W	TX Tone/NAC	Mode	
COMMAND	2	159.1200N	NONE	151.3700N	100.0	A	
AIR TO GROUND	4	169.2000N	NONE	169.2000N	NONE	A	
COMMAND	8	159.2700N	156.7	151.1000N	123.0	A	
TACTICAL	10	168.3500N	NONE	168.3500N	NONE	A	
AIR TO GROUND	14	166.6750N	NONE	166.6750N	NONE	A	
AIR TO GROUND	15	169.1500N	NONE	169.1500N	NONE	A	
AIR GUARD	16	168.6250N	NONE	168.6250N	110.9	A	
9. Prepared By (Resource Unit Leader)			Approved By (Planning Section Chief)			Date	Time
MISSY FORDER			BRIAN ELDREDGE			05/18/2017	1614

Division/Group Assignment List (ICS 204 WF)

1. Incident Name:			3.			
WEST MIMS			Branch:		Division/Group:	
2. Operational Period: NIIGHT 1930-0730			III		NIGHT M/N/O	
Date/Time From: 05/19/2017 1930 FRI		Date/Time To: 05/20/2017 0730 SAT				
4. Operations Personnel						
OPERATIONS CHIEF		ROBERT LAENG		BRANCH DIRECTOR		ROBER TRINCADO BRYCE THOMAS (T)
SAFETY		GALEN YOUNG 575-574-8720		DIVISION/GROUP SUPERVISOR		SHANE STURGILL ADRIAN PORCHAS (T)
5. Resources Assigned this Period						
Strike Team / Task Force / Resource Designator		LWD	Leader	Number Persons	Drop Off PT./Time	Pick Up PT./Time
ENG3 - FAIRMOUNT - ENGINE 34 E-278		05/23	JOHNNIE T MACY	3	35/1930	35/0730
ENG6 - NMN4S - LAS VEGAS STATE FORESTRY - ENGIN E-605		05/26	JARROD DURAN	3	35/1930	35/0730
ENG6-NMN4S - LAS VEGAS STATE FORESTRY - ENGIN E-606		05/26	CODY ALCON	3	35/1930	35/0730
ENG6 - NMN6S - ENG 61 E-611		05/26	MIKE BALIZAN	3	35/1930	35/0730
ENG6 - CROSS TIMBERS FIRE MGMT - E-284		05/26	SCOTT WHITE	3	35/1930	35/0730
ENGINE - T6 - NC-NCS - PP-9600 E-531		05/23	LUCKY JOE JONES	3	35/1930	35/0730
TFLD (T) O-422		05/23	JEREMY HEATH LOWERY	1	35/1930	35/0730
TFLD O-413		05/23	BRAD HUTTON ALLEN	1	35/1930	35/0730
TFLD (T) O-671		05/30	JAMES E BARBERI	1	35/1930	35/0730
HEQB O-381		05/21	JOHN A KINDER	1	35/1930	35/0730
STEN (T) E-531.2		05/23	MATTHEW DAVIS HOOPER	1	35/1930	35/0730
EMPF O-388		05/23	KYLE PORT	1	35/1930	35/0730
6. Control Operations/Work Assignments:						
<p>Purpose: Keep fire West of Swamp Edge break and South of Suwanee Canal in DIV M and South of Crawford Rd in Div N.</p> <p>Task: Patrol and mop up within 50 ft of fire perimeter. Respond to any new starts witin DIV's. Determine and report contained line to Planning OSC1.</p> <p>End State: Confine fire perimeter to reduce threats and minimize damage to private timberlands and resource values at risk.</p>						
7. Special Instructions:						
8. Division/Group Communication Summary						
Function	Channel	RX Frequency N/W	RX Tone/NAC	TX Frequency N/W	TX Tone/NAC	Mode
COMMAND	3	159.1200N	NONE	151.3700N	82.5	A
AIR TO GROUND	4	169.2000N	NONE	169.2000N	NONE	A
TACTICAL	10	168.3500N	NONE	168.3500N	NONE	A
AIR TO GROUND	14	166.6750N	NONE	166.6750N	NONE	A
AIR TO GROUND	15	169.1500N	NONE	169.1500N	NONE	A
AIR GUARD	16	168.6250N	NONE	168.6250N	110.9	A
9. Prepared By (Resource Unit Leader)			Approved By (Planning Section Chief)		Date	Time
MISSY FORDER			BRIAN ELDREDGE		05/19/2017	1130

Division/Group Assignment List (ICS 204 WF)

1. Incident Name:			3.			
WEST MIMS			III	Division/Group: NIGHT M/N/O		
2. Operational Period: NIIGHT 1930-0730						
Date/Time From:	Date/Time To:					
05/19/2017 1930 FRI	05/20/2017 0730 SAT					
4. Operations Personnel						
OPERATIONS CHIEF	ROBERT LAENG		BRANCH DIRECTOR	ROBER TRINCADO BRYCE THOMAS (T)		
SAFETY	GALEN YOUNG 575-574-8720		DIVISION/GROUP SUPERVISOR	SHANE STURGILL ADRIAN PORCHAS (T)		
7. Special Instructions:						
<p>Contact Night Incident Communications for any needs. Brief/Debrief at John M Bethea State Forest with all night Divisions. Identify escape routes. Loggers will be camping at the cutting area. Patrol logging operation area for potential reburn. Work with the logging foreman on any suppression action needs within the logging area.</p> <p>Medical Emergency Channel: Command ETA for Ambulance to Scene: Ground: 25 mins Approved Helispot: Drop Point 3 Lat: N 30 41.257 Long: W 82 28.833</p> <p>For IA protocol see page 8</p>						
8. Division/Group Communication Summary						
Function	Channel	RX Frequency N/W	RX Tone/NAC	TX Frequency N/W	TX Tone/NAC	Mode
COMMAND	3	159.1200N	NONE	151.3700N	82.5	A
AIR TO GROUND	4	169.2000N	NONE	169.2000N	NONE	A
TACTICAL	10	168.3500N	NONE	168.3500N	NONE	A
AIR TO GROUND	14	166.6750N	NONE	166.6750N	NONE	A
AIR TO GROUND	15	169.1500N	NONE	169.1500N	NONE	A
AIR GUARD	16	168.6250N	NONE	168.6250N	110.9	A
9. Prepared By (Resource Unit Leader)			Approved By (Planning Section Chief)		Date	Time
MISSY FORDER			BRIAN ELDREDGE		05/19/2017	1130

Division/Group Assignment List (ICS 204 WF)

1. Incident Name:				3.			
WEST MIMS				IV		NIGHT A/Y/Z	
2. Operational Period: NIIGHT 1930-0730							
Date/Time From: 05/19/2017 1930 FRI		Date/Time To: 05/20/2017 0730 SAT					
4. Operations Personnel							
OPERATIONS CHIEF		ROBERT LAENG		BRANCH DIRECTOR		ROBERT TRINCADO BRYCE THOMAS (T)	
SAFETY		JAMES WILLIAMS 334-755-6489		DIVISION/GROUP SUPERVISOR		JOHN MOLVE MATT HASKINS (T)	
5. Resources Assigned this Period							
Strike Team / Task Force / Resource Designator		LWD	Leader	Number Persons	Drop Off PT./Time	Pick Up PT./Time	
ENG6 - OK- #4 E-451		05/22	ANDREW CARR	2	DP 10/1930	DP 10/0730	
ENG6 - OK- #1 E-452		05/22	BROCK HILL	2	DP 10/1930	DP 10/0730	
ENG6 - OK-OKS SE #72 E-453		05/22	BRADLEY D WALKER	2	DP 10/1930	DP 10/0730	
ENG6 - BALDWIN FORESTRY, LLC - A95852 - E-1 E-535		05/23	ROYCE DAVIS	3	DP 10/1930	DP 10/0730	
ENG6 - FIRE MNGMT SER 351086 E-286		05/31	STEVE NAJJAR	3	DP 10/1930	DP 10/0730	
ENG6 - NC-NCF E-631 E-534		05/23	JAMES CHERRY	3	DP 10/1930	DP 10/0730	
ENG6 FIRE TRAX LLC - # 610 E-536		05/23	MICHAEL CRAMER	3	DP 10/1930	DP 10/0730	
ENG6 E-796		05/29	MONTANA MASDEN	3	DP 10/1930	DP 10/0730	
ENG6 K & L FARMS - 03 - VIN# 21565 E-728		05/30	RIC GORDON	3	DP 10/1930	DP 10/0730	
ENG6 K & L FARMS - 09 - VIN# 66339 E-729		05/30	DON GROAT	3	DP 10/1930	DP 10/0730	
ENG6 K & L FARMS - 15 - VIN# 40182 E-730		05/30	IAN SHELLEY	3	DP 10/1930	DP 10/0730	
WTS2 E-313		05/18	WOODY BARGERON	1	DP 10/1930	DP 10/0730	
WTS2 -AZ-DSY #146 E-643		05/30	RANDY KENNEDY	1	DP 10/1930	DP 10/0730	
TPL2 - FORESTRY COMPANY, THE INC - N03202 E-461		05/21	SAVELL SCHMIDT		DP 10/1930	DP 10/0730	
TPL4 - SMR #4441 E-508		05/28	TRAVIS POLLARD	1	DP 10/1930	DP 10/0730	
STEN O-412		05/24	JAMES FARRELL	1	DP 10/1930	DP 10/0730	
TFLD O-420		05/23	MATTHEW R HASKINS	1	DP 10/1930	DP 10/0730	
TFLD O-382		05/22	BRIAN GERMAN	1	DP 10/1930	DP 10/0730	
8. Division/Group Communication Summary							
Function	Channel	RX Frequency N/W	RX Tone/NAC	TX Frequency N/W	TX Tone/NAC	Mode	
AIR TO GROUND	4	169.2000N	NONE	169.2000N	NONE	A	
COMMAND	8	159.2700N	156.7	151.1000N	123.0	A	
TACTICAL	9	159.2850N	NONE	159.2850N	156.7	A	
AIR TO GROUND	14	166.6750N	NONE	166.6750N	NONE	A	
AIR TO GROUND	15	169.1500N	NONE	169.1500N	NONE	A	
AIR GUARD	16	168.6250N	NONE	168.6250N	110.9	A	
9. Prepared By (Resource Unit Leader)			Approved By (Planning Section Chief)			Date	Time
MISSY FORDER			BRIAN ELDREDGE			05/19/2017	1130

Division/Group Assignment List (ICS 204 WF)

1. Incident Name:			3.			
WEST MIMS			IV		NIGHT A/Y/Z	
2. Operational Period: NIIGHT 1930-0730						
Date/Time From: 05/19/2017 1930 FRI		Date/Time To: 05/20/2017 0730 SAT				
4. Operations Personnel						
OPERATIONS CHIEF		ROBERT LAENG		BRANCH DIRECTOR		ROBERT TRINCADO BRYCE THOMAS (T)
SAFETY		JAMES WILLIAMS 334-755-6489		DIVISION/GROUP SUPERVISOR		JOHN MOLVE MATT HASKINS (T)
5. Resources Assigned this Period						
Strike Team / Task Force / Resource Designator		LWD	Leader	Number Persons	Drop Off PT./Time	Pick Up PT./Time
TFLD E-796.2		05/29	JOSEPH DUENSING	1	DP 10/1930	DP 10/0730
TFLD E-796.4		05/29	CODY RUSSELL	1	DP 10/1930	DP 10/0730
HEQB O-378		05/23	HALE REDDING	1	DP 10/1930	DP 10/0730
HEQB O-379		05/22	BRANDON COVILLE	1	DP 10/1930	DP 10/0730
HEQB O-375		05/22	DENNIS HUENERGARDT	1	DP 10/1930	DP 10/0730
EMPT E-342		05/20	MIKE KOEPKE	1	DP 10/1930	DP 10/0730
6. Control Operations/Work Assignments:						
Purpose: Keep fire North of FL 2 and East of North Prong of St. Mary's River.						
Task: Patrol and mop up within 50 ft of fire perimeter. Respond to any new starts within Div. Determine and report contained line to Planning OSC1.						
End State: Confine fire perimeter to reduce threats and minimize damage to private timberlands and resource values at risk.						
7. Special Instructions:						
Ensure LCES is in place before operations begin and stay hydrated. Drive defensively and with lights on at all times. Identify escape routes. Bridge near DP 9 restricted to pickups - No engines. Bridge on swamp perimeter road just east of first Branch has steep drop offs - 1 lane travel - watch for barricades.						
Medical Emergency Channel: Command ETA for Ambulance to Scene: Ground: 15 mins Approved Helispot: Drop Point 1 Lat: N 30 30.929 Long: W 82 14.174						
8. Division/Group Communication Summary						
Function	Channel	RX Frequency N/W	RX Tone/NAC	TX Frequency N/W	TX Tone/NAC	Mode
AIR TO GROUND	4	169.2000N	NONE	169.2000N	NONE	A
COMMAND	8	159.2700N	156.7	151.1000N	123.0	A
TACTICAL	9	159.2850N	NONE	159.2850N	156.7	A
AIR TO GROUND	14	166.6750N	NONE	166.6750N	NONE	A
AIR TO GROUND	15	169.1500N	NONE	169.1500N	NONE	A
AIR GUARD	16	168.6250N	NONE	168.6250N	110.9	A
9. Prepared By (Resource Unit Leader)			Approved By (Planning Section Chief)		Date	Time
MISSY FORDER			BRIAN ELDREDGE		05/19/2017	1130

Division/Group Assignment List (ICS 204 WF)

1. Incident Name:				3.			
WEST MIMS				IV		NIGHT A/Y/Z	
2. Operational Period: NIIGHT 1930-0730							
Date/Time From: 05/19/2017 1930 FRI		Date/Time To: 05/20/2017 0730 SAT					
4. Operations Personnel							
OPERATIONS CHIEF		ROBERT LAENG		BRANCH DIRECTOR		ROBERT TRINCADO BRYCE THOMAS (T)	
SAFETY		JAMES WILLIAMS 334-755-6489		DIVISION/GROUP SUPERVISOR		JOHN MOLVE MATT HASKINS (T)	
7. Special Instructions:							
<p>Primary - Ambulance is ground contact with air ambulance Secondary - IWI- IC or approved person will use channel 16 (Air Guard) for ground contact with air ambulance</p> <p>For IA protocol see page 8</p>							
8. Division/Group Communication Summary							
Function	Channel	RX Frequency N/W	RX Tone/NAC	TX Frequency N/W	TX Tone/NAC	Mode	
AIR TO GROUND	4	169.2000N	NONE	169.2000N	NONE	A	
COMMAND	8	159.2700N	156.7	151.1000N	123.0	A	
TACTICAL	9	159.2850N	NONE	159.2850N	156.7	A	
AIR TO GROUND	14	166.6750N	NONE	166.6750N	NONE	A	
AIR TO GROUND	15	169.1500N	NONE	169.1500N	NONE	A	
AIR GUARD	16	168.6250N	NONE	168.6250N	110.9	A	
9. Prepared By (Resource Unit Leader)			Approved By (Planning Section Chief)			Date	Time
MISSY FORDER			BRIAN ELDREDGE			05/19/2017	1130

AIR OPERATIONS SUMMARY (ICS220)

Prepared by: John Mason

Prepared Date: 5/18/2017

Prepared Time: 17:00

1. INCIDENT NAME: West Mims	2. OPS PERIOD DATE: 5/19/17	START TIME: 0900	END TIME: 2030	SUNRISE: 0631	SUNSET TIME: 2018 (Folkston)
3. REMARKS Safety Notes: Hazards (SEE AND AVOID GENERAL AVIATION TRAFFIC AND AERIAL HAZARDS) -Maintain clear communications; confirm that drop location is clear; ground personnel state: "Clear to Drop" -Incident Aircraft conduct flight following with Pogo Helibase when ATGS is not up. -Aerial Ignition Group: Helicopter 1FW with PLDO; FIRB, Mitchell Hardy. ORDERING/FLIGHT REQUESTS -Request Helicopter water drops through Air Attack -Request aerial ignition through Operations -Request Tankers/Retardant through Air Attack -Requests for Reconnaissance missions must go through Operations for pre-approval E-MAIL AIRCRAFT COSTS DAILY AT END OF SHIFT TO: john_mason@fws.gov			4. READY ALERT AIRCRAFT: 2BH Call 911 to request LIFEFLIGHT aircraft.		5. TFR: 7/1766; Surface to 3500' MSL; See NOTAM for full description. Frequency 120.8500

6. PERSONNEL	NAME	PHONE #	7. FREQUENCIES	AM	FM	8. FIXED-WING- Type/ Make-Model/ N#/ Base
AOBD AOBD -Deputy	Tim Faust Brad Bernardy Air Ops Desk	702-271-6055 601-540-6528 912-637-5133	A/A - Fixed Wing A/A - Rotor / TFR A/G (Request) A/G 66 (Primary) A/G 72 (Secondary)	120.3500 120.8500	 169.2000 166.6750 169.1500	AIR ATTACK – ATGS – Mark Nunez / AC690 / N690RA / LCQ 805-975-5227 ATGS(T) – Derek Wheeler 530-355-3274 ATGS – Chris Worrel / Kodiak / N420Q / LCQ 850-447-4597
ASGS	John Mason	478-951-7319				LEAD – ASM – Bravo xx As assigned
HEB2 - Pogo HEB1 - Lake City HEB1(T) - Lake City	Marc 'Boomer' Rudkin Nate Alexander Kris Paxson	307-287-0440 406-491-0878 719-660-8281	Deck/TOLC (Pogo) Deck (Lake City)		168.0500 163.100	TANKERS – As available (T-1) BAE146 / N473NA / LCQ (Off Sundays) (T-2) BAE146 / N474NA / LCQ (Off Mondays) (T-164) RJ-85A / N374AC / LCQ (Off Thursdays) (T-911) DC-10 / N17085 / CHA (Off Sat. & Sun.)
	Pogo Helibase	912-496-4415				
	Lake City Helibase	561-512-6333	Air Guard		168.625 (110.9)	

9. HELICOPTER Remarks Box Legend: C=Cargo P=Passengers B=Bucket SN=Snorkel R=Rappel H=Hoist SH=Short Haul ME=Medical Evacuation/ Extraction Exu=Exclusive Use

FAA N#	T Y	MAKE/ MODEL	BASE	START	READY to FLY	REMARKS	FAA N#	T Y	MAKE/ MODEL	BASE	START	READY to FLY	REMARKS
132BH	3	AS350 B3	Pogo (3GE1)	0700	0830	P, B Exu	13FH	1	UH-60A	Lake City (LCQ)	0700	0730	B Exu
351FW	3	AS350 B2	Pogo (3GE1)	0700	0830	P, B Exu	137BH	1	S70A-27	Lake City (LCQ)	0700	0730	B *On Loan
471CH	1	CH-47D	Lake City (LCQ)	0700	0730	SN Exu	472CH	1	CH-47D	Lake City (LCQ)	0700	0730	SN *On Loan
161KA	1	K-1200	Lake City (LCQ)	0700	0730	B Exu	611CK (701)	1	SH-3H / S-61	Lake City (LCQ)	0700	0730	SN *On Loan
699RH	1	K-1200	Lake City (LCQ)	0700	0730	B Exu							

INCIDENT RADIO COMMUNICATIONS PLAN (ICS 205)

1. Incident Name:	2. Date/Time Prepared:	3. Operational Period: NIIGHT 1930-0730	
WEST MIMS	Date: 05/18/2017 Time: 1614	Date/Time From: 05/19/2017 1930 FRI	Date/Time To: 05/20/2017 0730 SAT

4. Basic Radio Channel Use:

Zone Group	Ch #	Function	Channel Name/Trunked Radio System Talkgroup	Assignment	RX Freq	RX Tone/NAC	TX Freq	TX Tone/NAC	Mode (A,D, or M)	Remarks
1 WEST	1	COMMAND	WEST OKEE REP		167.1250N	156.7	163.1500N	156.7	M	STEPHEN FOSTER STATE PARK
1 WEST	2	COMMAND	S. FOSTER	NIGHT D/E	159.1200N	NONE	151.3700N	100.0	A	STRUCTURE
1 EAST	3	COMMAND	CORNELIA		159.1200N	NONE	151.3700N	82.5	A	
1 ALL DIVISIONS	4	AIR TO GROUND	A/G REQUEST	ALL DIVISIONS	169.2000N	NONE	169.2000N	NONE	A	
1	5	COMMAND	GFC EDDY	GA FORESTRY	159.4650N	NONE	151.1450N	123.0	A	GEORGIA FORESTRY ONLY
1	6	TACTICAL	GFC TAC 1		159.3900N	NONE	159.3900N	156.7	A	
1	7	TACTICAL	V FIRE 26		154.3025N	NONE	154.3025N	156.7	A	
1	8	TACTICAL	OSCEOLA PROJECT		163.7125N	NONE	163.7125N	NONE	A	
1	9	TACTICAL	SE COMPACT	NIGHT D/E	159.2850N	NONE	159.2850N	156.7	A	
1	10	TACTICAL	REFUGE TAC 1	STRUCTURE	168.3500N	NONE	168.3500N	NONE	A	
1	11	TACTICAL	REFUGE TAC 2		163.1000N	NONE	163.1000N	NONE	A	
1	12	TACTICAL	FFS 199		159.4425N	NONE	159.4425N	NONE	A	
1	13	TACTICAL	FFS 200		159.4125N	NONE	159.4125N	NONE	A	
1 ALL DIVISIONS	14	AIR TO GROUND	AIR TO GRD 66	A/G PRIMARY	166.6750N	NONE	166.6750N	NONE	A	AIR TO GROUND PRIMARY
1 ALL DIVISIONS	15	AIR TO GROUND	AIR TO GRD 72	A/G SECONDARY	169.1500N	NONE	169.1500N	NONE	A	AIR / GROUND SECONDARY
1 ALL DIVISIONS	16	AIR GUARD	AIR GUARD	ALL DIVISIONS	168.6250N	NONE	168.6250N	110.9	A	EMERGENCY AIRCRAFT COMMUNICATIONS

5. Special Instructions:

WEST MIMS NIGHT PLAN

6. Prepared By (Communications Unit Leader)	Name: JERRY W. PATRICK	Signature:
ICS 205	IAP Page	Date/Time: 05/18/2017 1614

INCIDENT RADIO COMMUNICATIONS PLAN (ICS 205)

1. Incident Name:	2. Date/Time Prepared:	3. Operational Period: NIIGHT 1930-0730	
WEST MIMS	Date: 05/18/2017 Time: 1614	Date/Time From: 05/19/2017 1930 FRI	Date/Time To: 05/20/2017 0730 SAT

4. Basic Radio Channel Use:

Zone Group	Ch #	Function	Channel Name/Trunked Radio System Talkgroup	Assignment	RX Freq	RX Tone/NAC	TX Freq	TX Tone/NAC	Mode (A,D, or M)	Remarks
2	1	TACTICAL	V FIRE 21	MUTUAL AID	154.2800N	NONE	154.2800N		A	MUTUAL AID CHANNEL
2 WEST	2	COMMAND	S. FOSTER		159.1200N	NONE	151.3700N	100.0	A	
2 EAST	3	COMMAND	CORNELIA	NIGHT M/N/O	159.1200N	NONE	151.3700N	82.5	A	NIGHT K/ L
2 ALL DIVISIONS	4	AIR TO GROUND	A/G REQUEST	ALL DIVISIONS	169.2000N	NONE	169.2000N	NONE	A	BY REQUEST ONLY
2	5	COMMAND	GFC EDDY	GA FORESTRY	159.4650N	NONE	151.1450N	123.0	A	GEORGIA FORESTRY ONLY
2	6	COMMAND	GA BEND		159.2700N	156.7	151.1000N	156.7	A	
2 NORTH	7	COMMAND	FARGO RPT		159.2700N	156.7	151.1000N	100.0	A	
2 SOUTH	8	COMMAND	BAKER RPT	NIGHT B/C	159.2700N	156.7	151.1000N	123.0	A	STRUCTURE, NIGHT A/Y/Z
2	9	TACTICAL	COMPACT	NIGHT A/Y/Z	159.2850N	NONE	159.2850N	156.7	A	
2	10	TACTICAL	REFUGE TAC 1	NIGHT M/N/O	168.3500N	NONE	168.3500N	NONE	A	
2	11	TACTICAL	OSCEOLA PROJECT	STRUCTURE	163.7125N	NONE	163.7125N	NONE	A	
2	12	TACTICAL	FFS 199	NIGHT B/C	159.4425N	NONE	159.4425N	NONE	A	
2	13	TACTICAL	FFS 200	NIGHT K/L	159.4125N	NONE	159.4125N	NONE	A	
2 ALL DIVISIONS	14	AIR TO GROUND	AIR TO GRD 66	A/G PRIMARY	166.6750N	NONE	166.6750N	NONE	A	AIR / GROUND PRIMARY
2 ALL DIVISIONS	15	AIR TO GROUND	AIR TO GRD 72	A/G SECONDARY	169.1500N	NONE	169.1500N	NONE	A	AIR / GROUND SECONDARY
2 ALL DIVISIONS	16	AIR GUARD	AIR GUARD	ALL DIVISIONS	168.6250N	NONE	168.6250N	110.9	A	EMERGENCY AIRCRAFT COMMUNICATIONS

5. Special Instructions:

WEST MIMS NIGHT PLAN

6. Prepared By (Communications Unit Leader)	Name: JERRY W. PATRICK	Signature:
ICS 205	IAP Page	Date/Time: 05/18/2017 1614

PHONE LIST - WEST MIMS FIRE

Position	Name	Phone Number	Position	Name	Phone Number
UNIFIED COMMAND			Telephone lines at ICP		
Red Team IC	Mike Dueitt	850-228-0320	Information/PIO		912-637-5132
Red Team IC(t)	Michael Goicochea	406-865-0975	Information		912-637-5108
GA Forest Commision IC	Buck Kline	912-678-2694	Air Ops		912-637-5133
Florida Forest Service IC	Rick Dolan	352-353-5101	Ordering		912-637-5107
Liason Officer	Keith Lawrence	803-522-5264	Ordering		912-637-5136
Liason Officer	J.D.Lee	239-340-4626	Ordering Fax		912-637-5104
Liason Officer	Andy Gaston	706-508-2363	Supply		912-637-5138
PUBLIC INFORMATION	Land Line	912-637-5108	Ground Support		912-637-5105
Information Desk		904-452-4627	Finance		912-637-5109
Public Information	Catherine Hibbard	413-531-4276	Finance Fax		912-637-5110
Public Information	Bonnie Strawser	252-423-0815	Operations		912-637-5112
Refuge Public Info	Susie Heisey	912-286-3110	Plans FAX		912-637-5115
AGENCY REPRESENTATIVES			Checkin		912-637-5137
Refuge FMO	Reese Kerbow	912-276-0167	Demob		912-637-5113
Refuge AFMO	Reggie Forcine	912-614-4041	Communications		912-637-5116
Refuge Manager	Mike Lusk	912-390-2193			
DNR Agency Liaison	SGT. Patrick Dupree	404-694-5596			
Ware Co EMA	Bill Parham	229-425-4549	Telephone lines at Eastside Camp		
Clinch Co EMA	Will Joyce	912-520-8581	Plans/Demob		912-496-3114
Lanier Co EMA	Randy Patten	229-482-5070	Plans Fax		912-496-3115
Charlton Co EMA	Bruce Young	912-390-2022	Operations		912-496-2278
Charlton Co Sheriff's Office	Inv. Clay Burnsel	912-276-2628	Ground Support		912-496-4368
Georgia EMA	Diane Adams	912-266-5421	Supply		912-496-3116
NC-Forest Service	Greg Smith	828-230-8527	Communications		912-496-2293
PLANNING			Medical		912-496-2289
PSC ICP	Brian Eldredge	208-869-6362			
PSC Eastside Camp	Terry Pierce	423-596-2694			
PSC ICP (T)	Jason Braunstein	434-249-9915	LAND OWNERS AND OTHER CONTACTS		
Fire Behavior Analyst	Gary Jarvis	251-288-1084	Steve Davis	Am Forest Mgmt	912-614-1828
Fire Behavior Analyst(t)	Kelly Cagle	336-302-0343	Allen C. Cross	Rayonier US Forest	904-796-7929
IMET	Joe Guoudsward	240-778-5279	Dave Gather	Okie Electric	912-390-9755
THSP-ARA	Dan Byrd	240-778-5278	Chad Edwards	Railroad Contact	540-797-9918
READ	Rocky Chesser	912-276-3232	Steve Magnolia	FD Coordinator	904-537-5853
FWS READ	Carl Schmidt	478-365-2088	Terri Jenkins	FWS FD/VFD Contact	912-313-4225
FWS READ	Daniel Barrant	352-490-1959	Ned Neenan	Legacy Forestry	352-317-0738
FWS READ	Howard McClough	912-276-0552	Ken Zaydel	Social Circle FD	404-205-2738
FWS READ	Erin Daughtrey	912-223-6752			
SITL	Terry Bowerman	423-552-3323		Okefenokee NWR	912-496-7366
SITL(t)	Kevin Hiers	229-560-8861	Reese Kerbow	Okefenokee NWR FMO	912-276-0167
GISS	Andrew Thompson	706-399-6459	Adam McCullough	NWR IA Duty Officer	912-496-4177
Finance	General	912-637-5109	Billy Estep	EMS Dir/Nassau County	904-813-3476
Chief	Bonny Johnson	859-556-1572			
FSC2	Reggie Lanier	912-314-1085			
Comp/Claims	Verma Coleman	470-532-8798			
Procurment	James Meredith	470-532-8810			
Time	Jean Frick	828-361-5361			
Ver 18May17pm					


PHONE LIST WEST MIMS FIRE

Position	Name	Phone Number	Position	Name	Phone Number
OPERATIONS	Land Line	912-637-5112	Branch IV	Steve Miller	386-937-0554
Lead Ops	Jim Durrwachter	229-561-3477	Division A	Hans Ruder	541-969-0295
Lead Ops (t)	Larry Smith	337-526-0128	Division A(t)	Jeff Bostwich	575-694-0280
Planning Ops-Eastside	Marc Crain	720-315-4240	Division Y	Joe Morris	
Planning Ops	Dave Walker	401-536-4047	Division Z	Jimmy Flanagan	775-296-0140
Planning Ops	Steve Weaver	828-360-2476	Division Z(t)	Jeff Neil	360-271-4231
Planning Ops (t)	Mike Davis	936-219-7743	Division A/Y/Z Night	John Molve	
Planning Ops (t) On R&R	Jeremy Brand	256-589-5098	Structure Group Night	Harold Kibbe	231-920-5085
East Operations	Beale Monday	928-699-5588	Refuge Advisor	Reggie Forcine	912-614-4041
Planning Ops (t)	Phil Daniels	720-315-4240	Florida Contingency	Keith Osteen	
West Operations	Shannon Bowman	850-490-0428	FWS Contingency	Rocky Chesser	912-276-3232
Structure	Aaron Guy	252-312-4369	FFS Contingency	John Raulerson	386-292-5652
Branch I	Darrell Miller	520-604-7582	FFS Contingency	Andy Lamborn	383-365-4441
Division B	Tim Stiltner	904-210-6731	STAM Bethea	Adam Dummer	831-238-0991
Division C	Bert Plant	732-904-5935			
Division D	Joe Burgette	303-548-0854	AIR OPERATIONS		
Division E	Greg Toll	303-588-2673	AOBD	Timothy Faust	702-271-6055
Division F	Shelly Crook	575-313-6837	Deputy AOBD	Brad Bernardy	601-540-6528
IA Group	Donnie Harris	252-475-8012	ATGS	Chris Worrell	850-447-4597
IA Group (t)	Arturo Gasdik	707-834-8205	ATGS	Mark Nunez	805-975-5227
Road Maint Group	Candice Kutrosky	719-651-0669	ATGS(t)	Derek Wheeler	530-355-3274
Branch I Night	Jamie Schwartz	540-903-7193	ATGS(t)	Mike Bot	623-696-8532
Structure Group Night	Chris Obrien		ASGS	John Mason	478-951-7319
Division Night D/E	James Lico	303-817-6009	HEB2-Pogo	Marc "Boomer" Rudkin	307-287-0440
Branch II	Nate Gogna	916-224-1061	HEB1 - Lake City	Nate Alexander	406-491-0878
Division G			HEB1 (t) - Lake City	Kris Paxson	719-660-8281
Division H			SAFETY		
Division I	Chris Lundgren	815-922-2502	Safety Officer	Mike Cook	205-272-2426
Division J	Jason Forthofer	406-207-5587	Safety Officer	Brad Lidell	812-583-5543
Branch III	Ron Smith	601-466-7153	Safety Officer	Tony Rivers	318-771-1316
Division K	Sun Bear Vierra	505-908-0955	Safety Officer	Ivan Cupp	405-990-7155
Division K(t)	Tom Albright	719-659-0024	Safety Officer	Larry Connell	352-303-3921
Division L	Sam McFarland	580-380-9680	LOGISTICS		
Division L(t)	Sean Basso	775-934-0544	Logistics Section Chief	John Smith	870-867-7254
Division M	Brian Browning	828-200-0102	Logistics Section Chief (t)	Rick Barrett	720-440-4744
Division N	Karen Scholl	909-553-7731	Logistics Chief(t) East Camp	Mark Morgan	
Division N (t)	Chris Rankin	307-359-1997	Service Branch	Joe Walker	229-561-4378
Division O	Jason Kolb	928-699-4985	Support Branch	John Bellemore	540-529-7697
Division O(t)	Michael Gue	305-338-6069	Facilities Unit Leader	Keith Plagemann	801-664-2781
IA Group	Greg Buckalew		Supply Unit Leader	Teddy Messenger	270-784-0248
Structure Prot Specialist	Randy Jones	352-267-7700	Ground Support Unit Ldr	Pat Wright	803-295-2819
Structure Prot Specialist			Ordering Manager	Tamara Klindt	512-762-3279
Branch III Night	Robert Laeng	209-352-0432	Food Unit Leader	Jim Lowe	336-451-1782
Division Night K/L	Kris Craddy	520-275-6747	Security Manager	Tom Neal	618-201-2111
STAM Eastside Camp	Chris Rudd	541-660-0634	Medical Unit Leader	Rich Dorazio	470-366-6302
FBAN (T)	Matt Filbert	208-720-7248	Communications Unit	24 Hour	912-637-5116
			Communications Unit Ldr	Jerry Patrick	601-942-2786
			INCM	Mike Shipley	678-357-9814
			East Camp Communications		470-366-6306



HEALTH AND SAFETY MESSAGE

“We don’t plan on luck to be safe, we plan on sound risk management and good decisions”....the Red Team

INCIDENT: West Mims Fire	DATE: Friday NIGHT, May 19, 2017
Major Hazards & Risks: Driving, Communication, Fire Behavior	
<p>Driving: <i>Drive cautiously because we can only accomplish our mission when we reach the fire. It’s Friday night so watch out for impaired or distracted drivers tonight. WEAR YOUR SEATBELTS and ALWAYS USE A SPOTTER when backing. Sleepiness and driving are a dangerous combination. Your morning drive to the motel is one of the highest risks you will face. Establish a check-in procedure so someone can check if you have not arrived safely.</i></p> <p>Communications: <i>There may be some areas where radio communications are inadequate. Inform the Communications Leader and mitigate by using human repeaters. Stop, Think, Talk...then Act.</i></p> <p>Fire Behavior: <i>Fire activity has been minimal during recent shifts, but there is still abundant fuel that is very dry. A new start or re-burn could produce significant fire behavior. Continue to watch weather and know the forecast for your night operations. Don’t engage in active fire unless you have LCES in place.</i></p> <p>Speak Up: <i>If you see something that is not quite right, say something. It might be an unsafe act, a co-worker who doesn’t look well, or some instructions that are not clear. When you speak up, speak to the person who will be affected and STOP a potentially dangerous outcome.</i></p>	
<p style="text-align: center;">“Confused”</p>  <p style="text-align: center;"><i>“Ask Questions for Clarifications”</i></p>	<p style="text-align: center;">Fire Order of the Day:</p> <p style="text-align: center;"><u>Give clear instructions and insure they are understood</u></p> <ul style="list-style-type: none"> • Task = What is to be done • Purpose = Why it needs to be done • End State = How it should look when completed

INCIDENT SAFETY ANALYSIS 215a

West Mims Fire - Friday, May 19, 2017

8. Location	9. Hazard	6. Control or Abatement Action (Engineering, Administrative, PPE, Avoidance, Education, etc)
ALL	Helicopter Operations	<ul style="list-style-type: none"> ~ Helicopter operations should be used for priority missions. ~ Stay clear of all bucket drops when suppression actions are in place and allow 1 minute prior to re-entry. ~ Pilots or air supervisor ensure ground resources are clear before bucket drops. ~ Monitor A-G communications. ~ Follow aviation safety guidelines in IRPG and IHOG. ~ Ground resources advise pilot of local power lines and local visibility issues.
All	Train Traffic	<ul style="list-style-type: none"> ~Observe warning signs when crossing tracks. ~If no warning lights are posted, bring vehicle to a complete stop and check for incoming trains before crossing. ~Use caution when crossing tracks with low vehicles or trailers. ~Contact CSX to ensure awareness to fire resource locations.
ALL	Significant Fire Behavior	<ul style="list-style-type: none"> ~ Pay attention to the predicted weather and any alerts that may be announced. ~ Establish "Trigger Points" to withdraw. ~ Have in place LCES before engaging in operations. ~ Know the location of your Escape Routes.
A, B, C, D, O, Z, Contingency, IA	Power Utilities	<ul style="list-style-type: none"> ~ Notify all personnel of down electrical lines. ~ Refer to the IRPG page 24 for Power Line Safety. ~ Always treat downed wires as energized. ~ Identify and avoid high tension transmission lines. ~ In high winds or areas of dense smoke, avoid areas under power lines. ~ Be aware of utility restoration in your work area.
ALL	Air Operations	<ul style="list-style-type: none"> ~ Follow " Aviation Watch-Out Situations" on page 44, IRPG. ~ Don't plan on air resources for medical transport or resupply. ~ Ensure positive communication with all air resources. ~ Ensure communications are established with operators. ~ During airtanker operations clear the drop zone before approach of the lead plane.
All	Structure Protection & HAZMAT	<ul style="list-style-type: none"> ~ Review "Wildland Urban Interface" Watch outs, IRPG page 12. ~ Use "Structure Assessment" checklist, IRPG pages 13-15. ~ Follow "HAZMAT Incident Operations" on pages 34-36 in IRPG. ~ Identify and avoid damaged gas service near structures.
B, C, O	Logging Operations	<ul style="list-style-type: none"> ~Stay clear of active cutting operations. ~If re-burns occur, stop cutting operations before entering the area. ~Use caution when logging equipment is in the area or traveling on the roads. ~Maintain communication with logging operation during operational period.
ALL & ICPs	Driving & Traffic	<ul style="list-style-type: none"> ~ Practice "Defensive Driving" techniques traveling on all roads and city streets. ~ Always use spotters when backing. ~ Honk horn to alert personnel when backing. ~ Keep clutter off dash and inside cab. ~ Follow Driving LCES (Lights, Chock blocks, Emergency brake, Seat belts. ~ Always use headlights. ~ Yield to pedestrians and bicycles. ~ Observe posted speed limits. ~ Use the 3 second rule for following distance when driving. ~ Use chock blocks, turn wheels into hill. ~ Avoid distractions (eating, cell phones, radio). ~ Ensure that windshields are kept clean of dust and bugs. ~Use caution when traveling on roads that are impacted by smoke or dusty conditions. ~When feasible, coordinate travel to and from the hotels to ensure two or more personnel travel together to mitigate long distances.
ALL	Hazard Trees	<ul style="list-style-type: none"> ~ Follow "Hazard Tree Safety" guidelines, IRPG page 22. ~ Post lookouts, or use a spotter in mop-up areas with personnel. ~ Don't park vehicles or take breaks in high concentrations of hazard trees. ~ Establish trigger points for disengagement during high wind events. ~ Remember that the hazard zone extends a minimum of 2 1/2 tree heights. ~ When working in bay areas, be aware of cypress trees. There are reports of them beginning to fall, due to burned out root systems.
ALL	Fireline Hazards	<ul style="list-style-type: none"> ~ Establish and continue to validate LCES. ~ Avoid radiant heat by wearing appropriate PPE correctly. ~ Use correct tool for task assigned. ~ Follow power line safety protocol as outlined on page 24 in IRPG. ~ Flag and isolate all HAZMAT and alert all personnel working in Division. ~ Follow WUI recommendations on pages 10-11 in IRPG.
ALL	Injury & Medical Emergency	<ul style="list-style-type: none"> ~ Assist injured employee and provide appropriate medical care. ~ Use EMT's on Division for initial care. ~ Follow medical protocol as outlined in ICS-206 (IWI) & IRPG Pgs 99-108

INCIDENT SAFETY ANALYSIS 215a

ALL	Firing Operations & Devices	<ul style="list-style-type: none"> ~ Only personnel trained in the use of each device will be authorized to use firing equipment. ~ Ensure all personnel are aware of firing operation that may affect them. ~ Wear appropriate PPE. ~ Ensure aerial/ground ignition plans have been adequately developed and personnel are briefed.
ALL	Communications	<ul style="list-style-type: none"> ~ Maintain communication with aviation resources, and suppression organization. ~ Ensure all know frequency and protocol for contacting resources. ~ Use clear terminology, ask questions and ensure good understanding, especially with new resources. ~ Utilize the ICS 205. ~ Utilize human repeaters when working in dead spots. ~ Know who you will contact in case of an emergency and practice the IWI protocol and 9 Line ~ Add Boom in Divisions E & F is necessary to improve commucations.
ALL	Heavy Equipment Operations	<ul style="list-style-type: none"> ~ Ensure communications are established with operators. ~ Use hand signals if other communications are unavailable. ~ Maintain a 50'-100' exclusion area around equipment and increase it to 1 1/2 times tree height when in timber. ~ Use a spotter when backing.
ALL	Poisonous Plants	<ul style="list-style-type: none"> ~ Identify and Avoid hazard areas. ~ Launder clothing. ~ Shower frequently.
ALL	Night Operations	<ul style="list-style-type: none"> ~ Maintain high visibility in work area and wear vest while in roadway. ~ Use glow sticks to mark hazards. ~ Ensure personnel have a personal light (headlamp) and red strobe to ensure visibility. ~ Watch for signs of fatigue. ~ Take breaks away from areas of known hazard.
ALL	Indirect Fire line	<ul style="list-style-type: none"> ~ Post lookouts, identify escape routes and safety zones (IRPG pg. 6). ~ Review "Strategy/Indirect Attack" (IRPG pg. 77).
ALL	Wildlife	<ul style="list-style-type: none"> ~ Watch out for wildlife inside fire area and along roadways including bears, alligators, snakes, hogs, and deer. ~ Clean up all debris and trash during each operational period. ~ Don't feed or harass the animals.
ALL	Fatigue & Over Exertion	<ul style="list-style-type: none"> ~ Drink 1 quart of water each hour during and after work. ~ Rotate crews out of smoky areas. ~ Set a reasonable work pace and allow adequate rest breaks while on the project. ~ Use buddy system to monitor personnel of heat related and fatigue issues. ~ Follow work / rest guidelines. Mitigate before next shift.
ALL	ATV/UTV use	<ul style="list-style-type: none"> ~ Ensure equipment is inspected and safe to use ~ Restrict UTV's to max width of 50" on ATV trails due to width and severe outsloped conditions. ~ Ensure operator is trained and certified to operate. ~ Ensure operator has proper PPE according to the Red Book. ~ At a minimum a hardhat with chin strap secured should be worn at all times. If your agency requires more advanced helmets and protection, follow your agency policy.
ALL	Unburned Area/Reburn Potential	<ul style="list-style-type: none"> ~ With the drying trend continuing, reburn of areas will become more of an issue. ~ Base actions upon observed and predicted fire behavior. ~ LCES Checklist (IRPG pg. 6). ~ Look Up, Down and Around (IRPG pg. 2-3)
ALL	Fog	<ul style="list-style-type: none"> ~ Obey posted speed limits at all times. Visibility may be limited to 1/2 mile in areas. ~ If driving in a convoy, maintain a safe distance between vehicles for emergency stops and distance. ~ Don't use high beam lights while driving, it can impair the vision of the driver and oncoming traffic.
ALL	Bees, Ticks, Mosquitoes, Spiders, Chiggers	<ul style="list-style-type: none"> ~ Canvas crew members for those with known allergic reactions to stings. ~ Ensure crew members have medication pens if needed. ~ Perform daily self inspection. ~ Use repellent as necessary. ~ Advanced Life Support, multi-dose epi and airway protection ~ Keep affected area clean and bandaged. ~ Be extra careful wen eating and/or drinkiing to avoid stings to mouth and throat.

MEDICAL PLAN (ICS 206 WF)

Incident/Project Name	1. Operational Period
West Mims Fire	Date/Time 5/19/2017 1800 to 0800 hrs

2. Ambulance Services			
Name	Complete Address	Phone	Advanced Life Support (ALS)
Clinch County EMS	1050 Valdosta Highway Homerville GA	911	YES
Charlton County EMS	321 Georgia Ave. St. George, GA	911	YES

3. Air Ambulance Services		
Name	Phone	Type of Aircraft & Capability
Air Methods	888-763-1010	AS 350 With night vision capabilities
Air Evac	888-269-6006	206 L1+ With Night Vision capability
Trauma 1	800-223-4878	Bell 407 & EC153 both with night vision capability

4. Hospitals								
	DD° MM.MMM' N - Lat DD° MM.MMM' W - Long		Travel Time Air Gnd		Phone	Helipad Yes No		Level of Care Facility
	Lat:	Long:						
Satilla Regional 410 Darling Ave. Waycross GA 31501	N 31° 13.452	W 82° 20.875	15 mins	45 mins	912-283-3030	<input checked="" type="checkbox"/>	<input type="checkbox"/>	Level III
	VHF:							
Clinch Memorial 1050 Valdosta Hwy Homerville GA 31634	N 31° 01.975	W 82° 45.850	20 mins	30 mins	912-487-5211	<input checked="" type="checkbox"/>	<input type="checkbox"/>	Level IV
	VHF:							
Ed Frazier Hospital 159 N. 3 rd St. MacClenny FL 32063	N 30° 28.482	W 82° 11.896	15 mins	45 mins	904-259-3151	<input checked="" type="checkbox"/>	<input type="checkbox"/>	Level IV
	VHF:							
Shands Jacksonville 655 West 8 th Str Jacksonville FL 32209	N 30° 20.890	W 81° 39.862	45 mins	90 mins	904-383-1015	<input checked="" type="checkbox"/>	<input type="checkbox"/>	Level I Burn Center Level I Trauma Center
	VHF:							

5. Division Branch Group	Area Location Capability
Division B/C	Kathy Nemmers EMPF (602)885-3115
Division D/E	Alyse Guitierrez (602)999-8011
Division A/Y/Z	Michael Koepke EMPF (928)249-0541
Division M/N/O	Kyle Port EMPF (602)410-6788
Branch 1 Amb./ 24 hr.	Clinch Co. EMS (470)-532-8806
Branch 3 Amb./24hr.	Golden Isles (912)602-9224

IWI IC Responsibilities:

- Take charge of the scene – inform the Division Supervisor and Communications that you are the IWI IC and establish radio communications (frequencies, channels). Identify the emergency name – Division A medical, Fish Meadows medical, Highway 21 accident.
- Assign or begin patient assessment (9 Line) and first aid. Request additional medical resources on division/branch or across incident. Transmit 9 Line patient information to Communications.
- Determine patient transportation through consultation with line medical personnel and Medical Unit Leader. Consider transportation time, risk to personnel, destination facility and available operational resources. If air transport is chosen, implement the plan for alternative transportation in the event aircraft cannot complete the mission. Order transportation resources through Communications as early as possible.
- Notify Communications as resources arrive and any patient status changes. Names of injured or deceased individuals will not be transmitted on the radio.
- Initiate documentation for future investigation; if a line safety officer is available, assign them to lead documentation. Do not move deceased individuals, gear or personal effects except to accomplish rescue work or protect the safety of others. Obtain written documentation of witnesses. The Unit Log, ICS 214, may be used for the initial documentation, but a subsequent narrative will be required.
- As appropriate, conduct an After Action Review to determine successes, areas to improve and lessons learned.

6. Prepared By (Medical Unit Leader)	7. Date/Time	8. Reviewed By (Safety Officer)	9. Date/Time
Rich DORazio MEDL	5/19/2017		5/19/2017

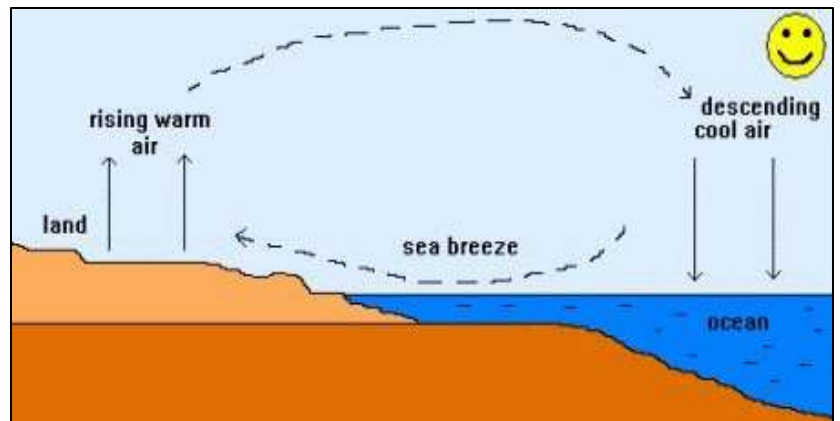
Sea Breeze and Wildfire

What is it?

Sea breeze is wind that forms over a large body of water and blows inland.

What causes it?

Land heats up faster than ocean water. During the day, hot land air rises, causing low pressure at the surface. Cool ocean air is under high pressure. The movement of air from high pressure (ocean) to low pressure (land) creates wind that blows inland, usually in the afternoon when the land reaches its maximum heating.



What are its effects on wildfire behavior?

The strength of a sea breeze and how far inland it travels depends on the land/ocean temperature differential. If an easterly Atlantic sea breeze, for example, is strong enough to reach the fire area, the density difference between hot and cold air masses creates a boundary called a sea-breeze front, which is essentially a shallow cold front. At this boundary, winds shift and thunderstorms can develop. The Okefenokee is close enough to the Atlantic Ocean and Gulf of Mexico to be affected by both sea breezes. If two sea breezes were to converge over the fire area, the resulting wind shifts and potential thunderstorms would be more intense.

Fire Information: 904-452-4627

Text your photos/videos to 252-216-8667 or email: okefirepio@gmail.com

Follow Us on Facebook: @Okefenokee National Wildlife Refuge, #westmimsfire, #okefenokee

Inciweb: <https://inciweb.nwcg.gov/incident/5153/>

05/19/2017

DEMOB LIST

WEST MIMS US-GA-OKR-017006

OVERHEAD

O-303		(EQTR)	BEHRENS, KARL
O-329		(COMP)	EATON, STACEY
O-311		(MISC)	MODULE - SUPPRESSION
O-331		(DIVS)	QUISENBERRY, DAVID
O-323		(GSUL)	STANLEY, ALLEN JEFFREY
O-333		(OSC2)	TRINCADO, ROBERTO
O-285		(INCM)	ATCHLEY, WILLIAM
O-194	after shift	(SOF2)	SMESTAD, STEVE
O-281.34	after shift	(ORDM)	GAINEY, NINA LATOYA
O-330	after shift	(BCMG)	GONZALEZ-SULLOW, NELSON
O-322	after shift	(PIOF)	SCHAFFER, THOMAS

05/20/2017

EQUIPMENT

E-340		(WTS2)	TIPTON & YOUNG CONST
E-387		(PU)	PICKUP - DNR136009
E-397		(SEC1)	PICKUP - DNR136206
E-412		(ENG6)	ENG 6 #0661
E-413		(ENG6)	ENG6 - 1061
E-426		(PU)	ENGINE - T7 - GFC4202193

OVERHEAD

O-324		(SEC1)	BREEDLOVE, DERIK
O-372		(HEQB)	BRINSON JR, JOE N
O-272		(SEC2)	COOPER, BUSTER

O-325	0000	(STEN)	FOWLER, JOSEPH ALAN
O-248	0000	(HMGB)	HARDY, MITCHELL
O-249	0000	(SEC1)	LAURENT, JIMMY
O-28	0000	(AOBS)	MCCULLOUGH JR, HOWARD
O-262	0000	(SEC2)	REESE, JEREMY
O-340	0000	(TFLD)	WHITTINGTON, BRADLEY T
O-446	0600	(PIO2)	STORCH, DONNA
O-183	0700	(HECM)	DUNKLEE, JUSTIN
O-182	0700	(HECM)	WADE, TRAVIS
O-356	1200	(HEQB)	BASS, LANDON CHASE
O-343	1800	(STEQ)	GAY, AARON LEE
O-357	1800	(STEQ)	ODOM, JASON JOHNSON

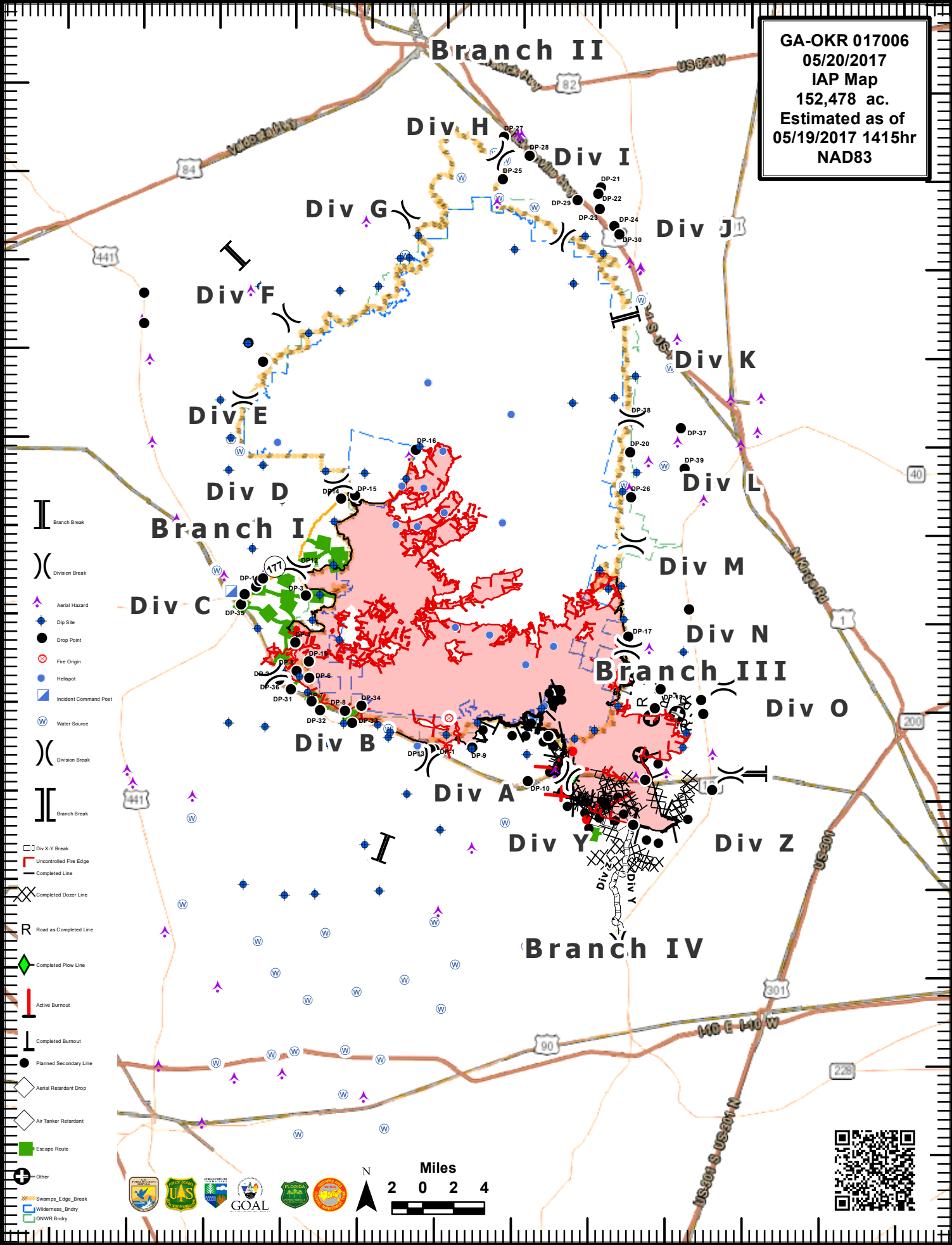
**IF YOU ARE TO FLY HOME PLEASE CONTACT DEMOB AT LEAST 3 DAYS BEFORE
FLIGHT TIME. PHONE # 1-912-637-5113 EMAIL demobwestmimsfire@gmail.com**

82°45'W 82°40'W 82°35'W 82°30'W 82°25'W 82°20'W 82°15'W 82°10'W 82°5'W 82°0'W 81°55'W 81°50'W

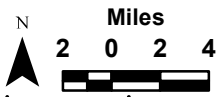
31°15'N 31°10'N 31°05'N 31°00'N 30°55'N 30°50'N 30°45'N 30°40'N 30°35'N 30°30'N 30°25'N 30°20'N 30°15'N 30°10'N 30°5'N

31°15'N 31°10'N 31°05'N 31°00'N 30°55'N 30°50'N 30°45'N 30°40'N 30°35'N 30°30'N 30°25'N 30°20'N 30°15'N 30°10'N 30°5'N

GA-OKR 017006
05/20/2017
IAP Map
152,478 ac.
Estimated as of
05/19/2017 1415hr
NAD83



- Branch Break
- Division Break
- Aerial Hazard
- Dip Site
- Drop Point
- Fire Origin
- Helipoint
- Incident Command Post
- Water Source
- Division Break
- Branch Break
- Div X-Y Break
- Uncontrolled Fire Edge
- Completed Line
- Completed Dozer Line
- Road as Completed Line
- Completed Plow Line
- Active Burnout
- Completed Burnout
- Planned Secondary Line
- Aerial Retardant Drop
- Air Tanker Retardant
- Escape Route
- Other
- Swamps_Edge_Break
- Wilderness_Bndry
- ONWR Bndry



This Page Intentionally left blank.

MEDICAL PLAN (ICS 206 WF)

Medical Incident Report

FOR ALL MEDICAL EMERGENCIES: IDENTIFY ON SCENE INCIDENT COMMANDER BY NAME AND POSITION AND ANNOUNCE "MEDICAL EMERGENCY" TO INITIATE RESPONSE FROM IMT COMMUNICATIONS/DISPATCH.

Use items one through nine to communicate situation to communications/dispatch.

1. CONTACT COMMUNICATIONS/DISPATCH

Ex: "Communications, Div. Alpha. Stand-by for Priority Medical Incident Report." (If life threatening request designated frequency be cleared for emergency traffic.)

2. INCIDENT STATUS: Provide incident summary and command structure.

Nature of Injury/Illness		Describe the injury (Ex: Broken leg with bleeding)
Incident Name		Geographic Name + "Medical" (Ex: Trout Meadow Medical)
Incident Commander		Name of IC
Patient Care		Name of Care Provider (Ex: EMT Smith)

3. INITIAL PATIENT ASSESSMENT: Complete this section for each patient. This is only a brief, initial assessment. Provide additional patient info after completing this 9 Line Report.

Number of Patients:	Male / Female	Age:	Weight:
Conscious? <input type="checkbox"/> YES <input type="checkbox"/> NO = MEDEVAC!			
Breathing? <input type="checkbox"/> YES <input type="checkbox"/> NO = MEDEVAC!			
Mechanism of Injury: <i>What caused the injury?</i>			
Lat/Long (Datum WGS84) <i>Ex: N 40° 42.45' x W 123° 03.24'</i>			

4. SEVERITY OF EMERGENCY, TRANSPORT PRIORITY

SEVERITY	TRANSPORT PRIORITY
<input type="checkbox"/> URGENT-RED Life threatening injury or illness. <i>Ex: Unconscious, difficulty breathing, bleeding severely, 2° – 3° burns more than 4 palm sizes, heat stroke, disoriented.</i>	Ambulance or MEDEVAC helicopter. Evacuation need is IMMEDIATE.
<input type="checkbox"/> PRIORITY-YELLOW Serious Injury or illness. <i>Ex: Significant trauma, not able to walk, 2° – 3° burns not more than 1-2 palm sizes.</i>	Ambulance or consider air transport if at remote location. Evacuation may be DELAYED.
<input type="checkbox"/> ROUTINE-GREEN Not a life threatening injury or illness. <i>Ex: Sprains, strains, minor heat-related illness.</i>	Non-Emergency. Evacuation considered Routine of Convenience.

5. TRANSPORT PLAN:

Air Transport: (Agency Aircraft Preferred)

<input type="checkbox"/> Helispot	<input type="checkbox"/> Short-haul/Hoist	<input type="checkbox"/> Life Flight	<input type="checkbox"/> Other
-----------------------------------	---	--------------------------------------	--------------------------------

Ground Transport:

<input type="checkbox"/> Self-Extract	<input type="checkbox"/> Carry-Out	<input type="checkbox"/> Ambulance	<input type="checkbox"/> Other
---------------------------------------	------------------------------------	------------------------------------	--------------------------------

6. ADDITIONAL RESOURCE/EQUIPMENT NEEDS:

<input type="checkbox"/> Paramedic/EMT(s)	<input type="checkbox"/> Crew(s)	<input type="checkbox"/> SKED/Backboard/C-Collar
<input type="checkbox"/> Burn Sheet(s)	<input type="checkbox"/> Oxygen	<input type="checkbox"/> Trauma Bag
<input type="checkbox"/> Medication(s)	<input type="checkbox"/> IV/Fluid(s)	<input type="checkbox"/> Cardiac Monitor/AED
<input type="checkbox"/> Other (i.e. splints, rope rescue, wheeled litter)		

7. COMMUNICATIONS:

Function	Channel Name/Number	Receive (Rx)	Tone/NAC *	Transmit (Tx)	Tone/NAC *
<i>Ex: Command</i>	<i>Forest Rpt, Ch. 2</i>	<i>168.3250</i>	<i>110.9</i>	<i>171.4325</i>	<i>110.9</i>
COMMAND					
AIR-TO-GRND					
TACTICAL					

*(NAC for digital radio system)

8. EVACUATION LOCATION:

Lat/Long (Datum WGS84) <i>EX: N 40 42.45' x W 123 03.24'</i>	
Patient's ETA to Evacuation Location:	
Helispot/Extraction Size and Hazards:	

9. CONTINGENCY:

Considerations: *If primary options fail, what actions can be implemented in conjunction with primary evacuation method? Be thinking ahead...*

REMEMBER: Confirm ETA's of resources ordered
Act according to your level of training
Be Alert. Keep Calm. Think Clearly. Act Decisively.