


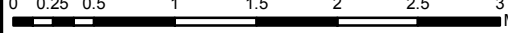
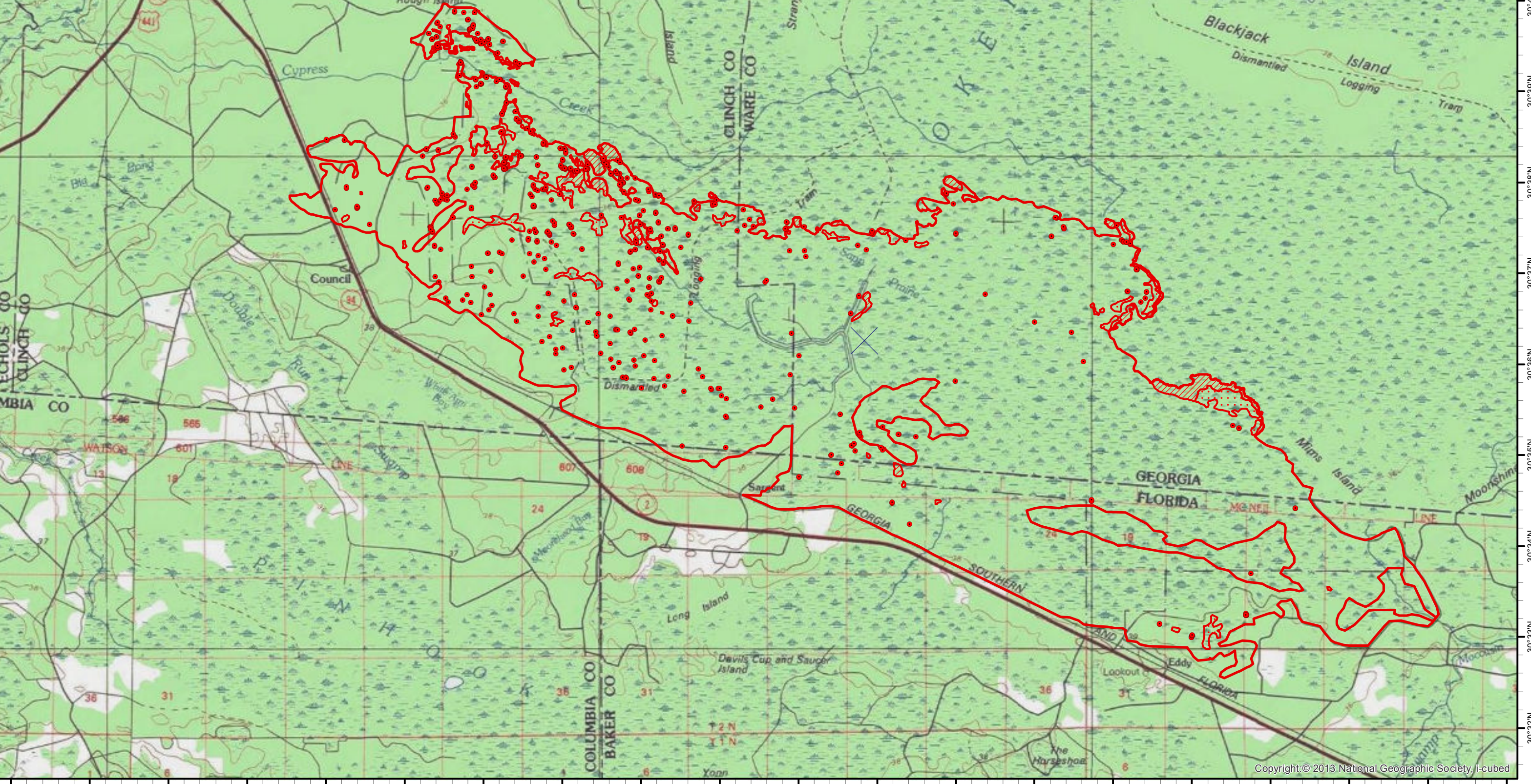
82°35'W 82°34'W 82°33'W 82°32'W 82°31'W 82°30'W 82°29'W 82°28'W 82°27'W 82°26'W 82°25'W 82°24'W 82°23'W 82°22'W 82°21'W 82°20'W 82°19'W 82°18'W 82°17'W

West Mims Infrared Map
GA-OKR-017006
Map Date: 04/21/2017
Imagery Date: 04/20/2017
Imagery Time: 2055 EDT
IR Interpreted Acres: 26,417
IRIN: Tina Rotenbury

- Isolated Heat Sources
- Heat Perimeter
- Intense Heat
- Scattered Heat



NAD 1983 UTM Zone 17N

82°35'W 82°34'W 82°33'W 82°32'W 82°31'W 82°30'W 82°29'W 82°28'W 82°27'W 82°26'W 82°25'W 82°24'W 82°23'W 82°22'W 82°21'W 82°20'W 82°19'W 82°18'W 82°17'W