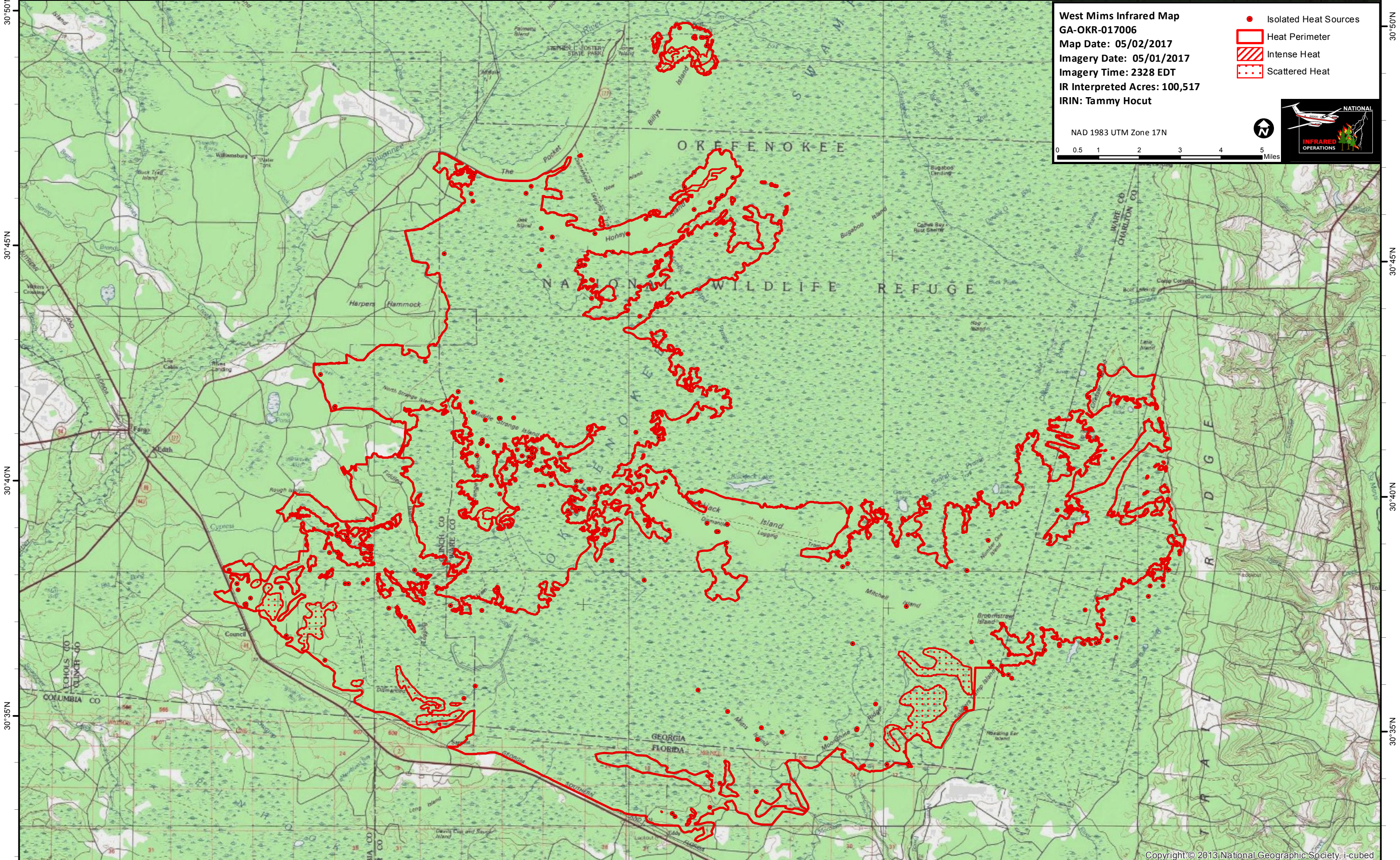


82°35'W 82°30'W 82°25'W 82°20'W 82°15'W 82°10'W 82°5'W



West Mims Infrared Map
GA-OKR-017006
Map Date: 05/02/2017
Imagery Date: 05/01/2017
Imagery Time: 2328 EDT
IR Interpreted Acres: 100,517
IRIN: Tammy Hocut

- Isolated Heat Sources
- Heat Perimeter
- Intense Heat
- Scattered Heat

NAD 1983 UTM Zone 17N



30°45'N

30°40'N

30°35'N

30°50'N

30°45'N

30°40'N

30°35'N

82°35'W 82°30'W 82°25'W 82°20'W 82°15'W 82°10'W 82°5'W