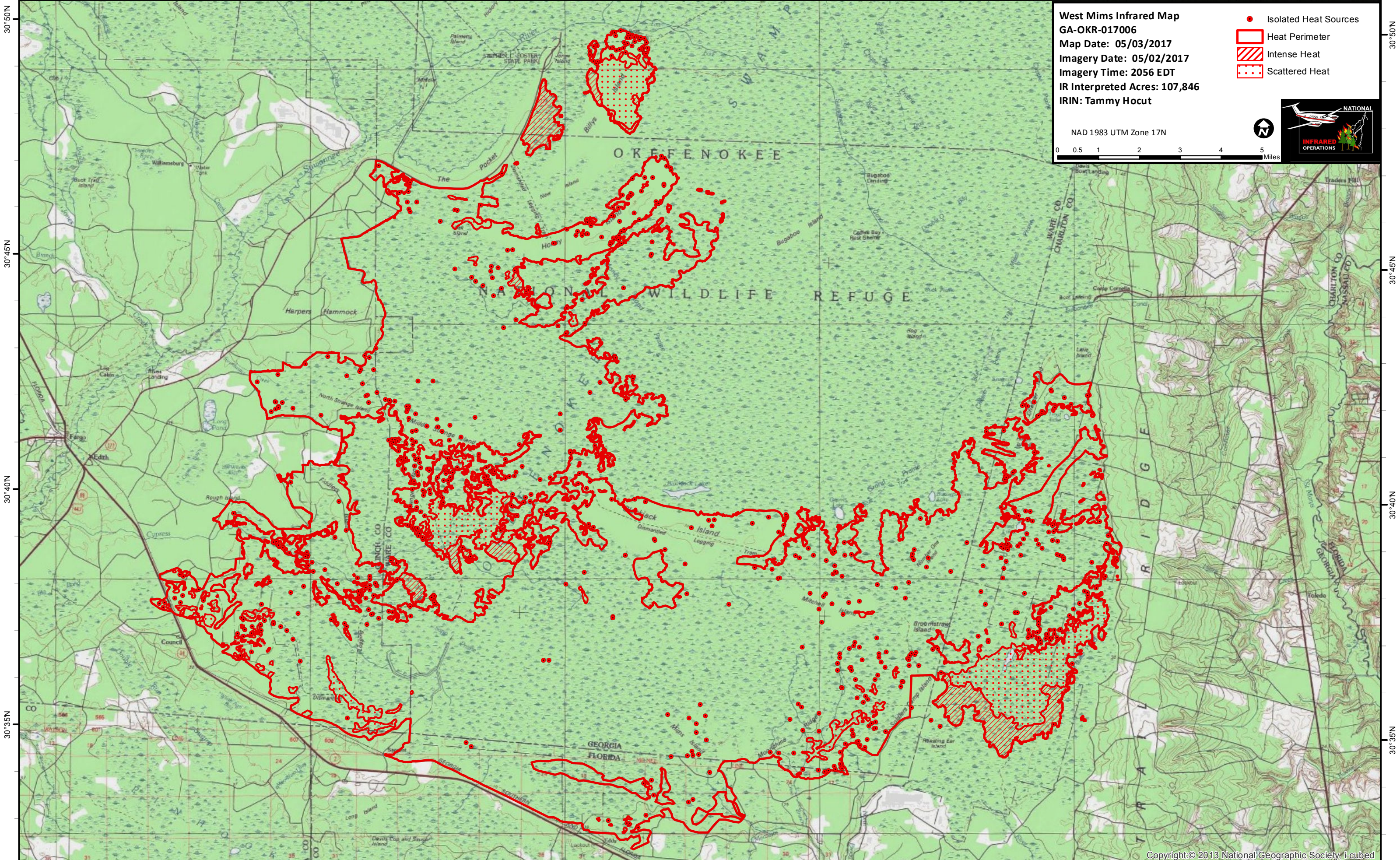


82°35'W 82°30'W 82°25'W 82°20'W 82°15'W 82°10'W 82°5'W



West Mims Infrared Map
GA-OKR-017006
Map Date: 05/03/2017
Imagery Date: 05/02/2017
Imagery Time: 2056 EDT
IR Interpreted Acres: 107,846
IRIN: Tammy Hocut

- Isolated Heat Sources
- Heat Perimeter
- Intense Heat
- Scattered Heat

NAD 1983 UTM Zone 17N



30°50'N
30°45'N
30°40'N
30°35'N

30°50'N
30°45'N
30°40'N
30°35'N

82°30'W 82°25'W 82°20'W 82°15'W 82°10'W 82°5'W