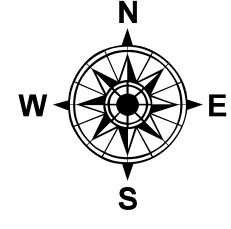
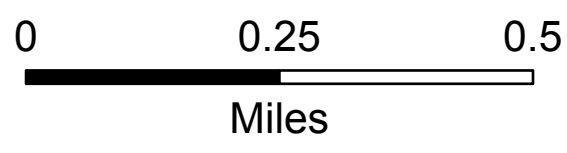


# OPS Map

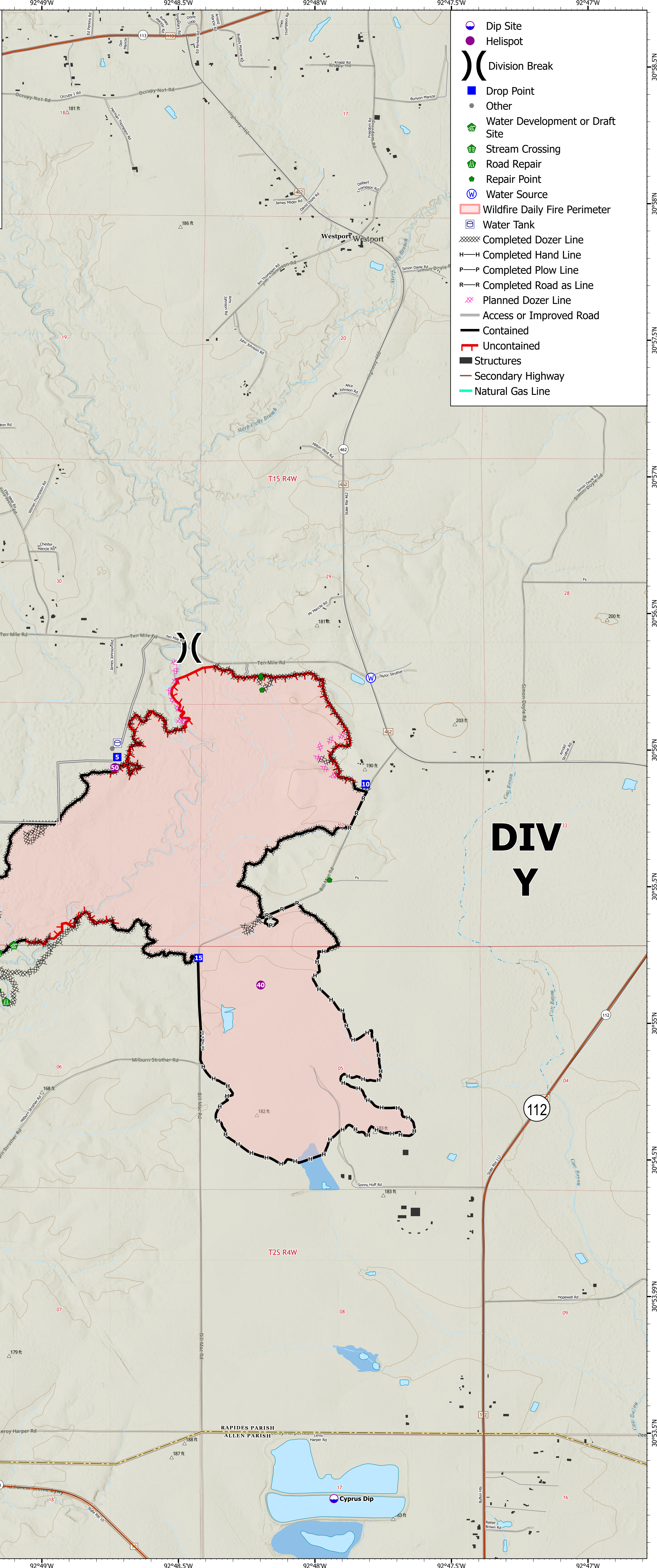
Elizabeth  
LA-LAS-000296  
September 10, 2023 Day  
930 acres at 9/8/2023 @ 0900



1:12,000 | SA Blue Team GIS | 9/9/2023 1958  
Acres from IR and GPS  
WGS 1984 Datum, Lat,Long Grid



- Dip Site
- Helispot
- Division Break
- Drop Point
- Other
- Water Development or Draft Site
- Stream Crossing
- Road Repair
- Repair Point
- Water Source
- Wildfire Daily Fire Perimeter
- Water Tank
- Completed Dozer Line
- Completed Hand Line
- Completed Plow Line
- Completed Road as Line
- Planned Dozer Line
- Access or Improved Road
- Contained
- Uncontained
- Structures
- Secondary Highway
- Natural Gas Line



**DIV C**

**DIV Y**

