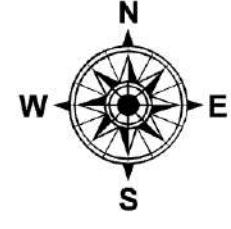


# OPS Map

Elizabeth  
LA-LAS-000296  
September 12, 2023 Day  
930 acres at 9/8/2023 @ 0900

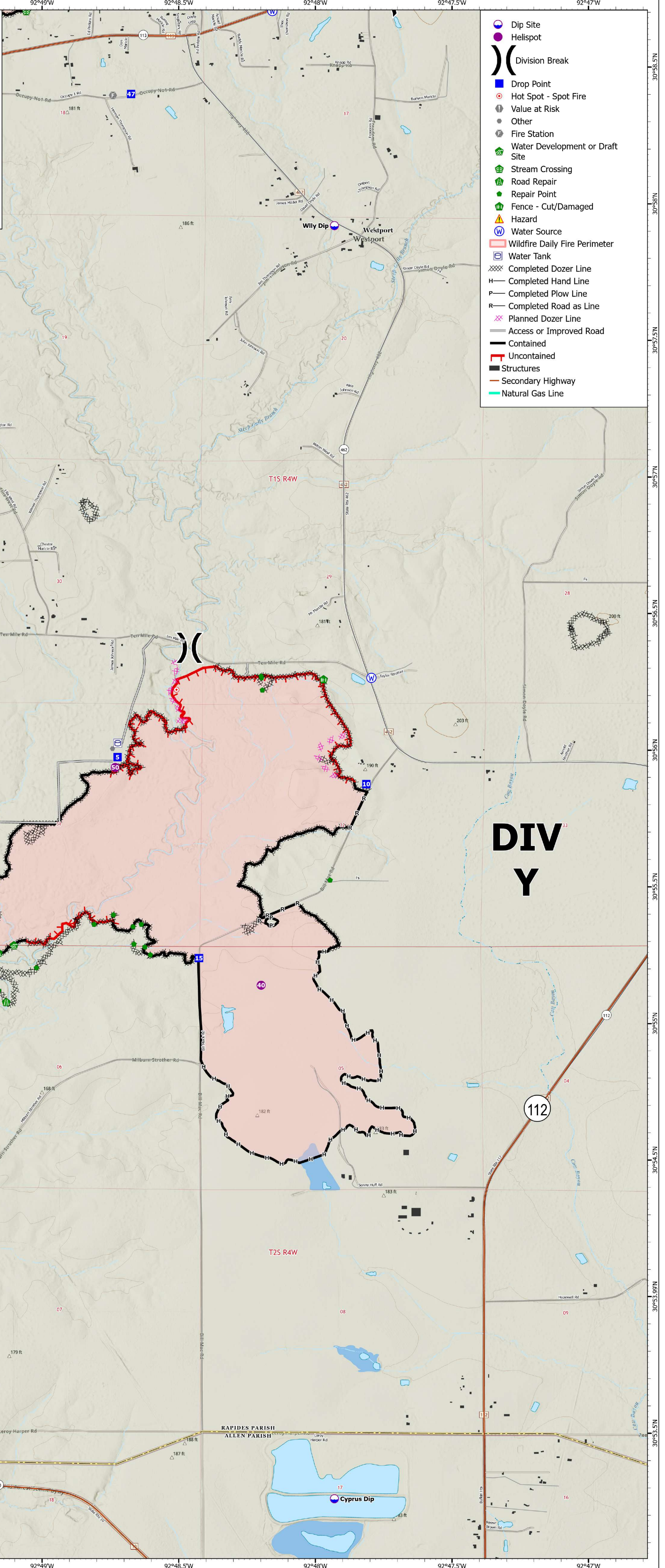
0 0.25 0.5  
Miles



1:12,000 | SA Blue Team GIS | 9/11/2023 2053  
Acres from IR and GPS  
WGS 1984 Datum, Lat,Long Grid



- Dip Site
- Helispot
- Division Break
- Drop Point
- Hot Spot - Spot Fire
- Value at Risk
- Other
- Fire Station
- Water Development or Draft Site
- Stream Crossing
- Road Repair
- Repair Point
- Fence - Cut/Damaged
- Hazard
- Water Source
- Wildfire Daily Fire Perimeter
- Water Tank
- Completed Dozer Line
- Completed Hand Line
- Completed Plow Line
- Completed Road as Line
- Planned Dozer Line
- Access or Improved Road
- Contained
- Uncontained
- Structures
- Secondary Highway
- Natural Gas Line



## DIV C

## DIV Y

