

Ops Map

Hwy 113

Elizabeth

LA-LAS-000256

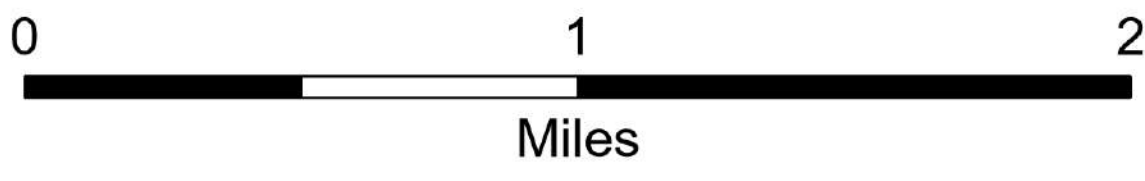
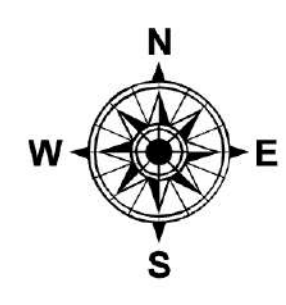
LA-LAS-000296

September 2, 2023

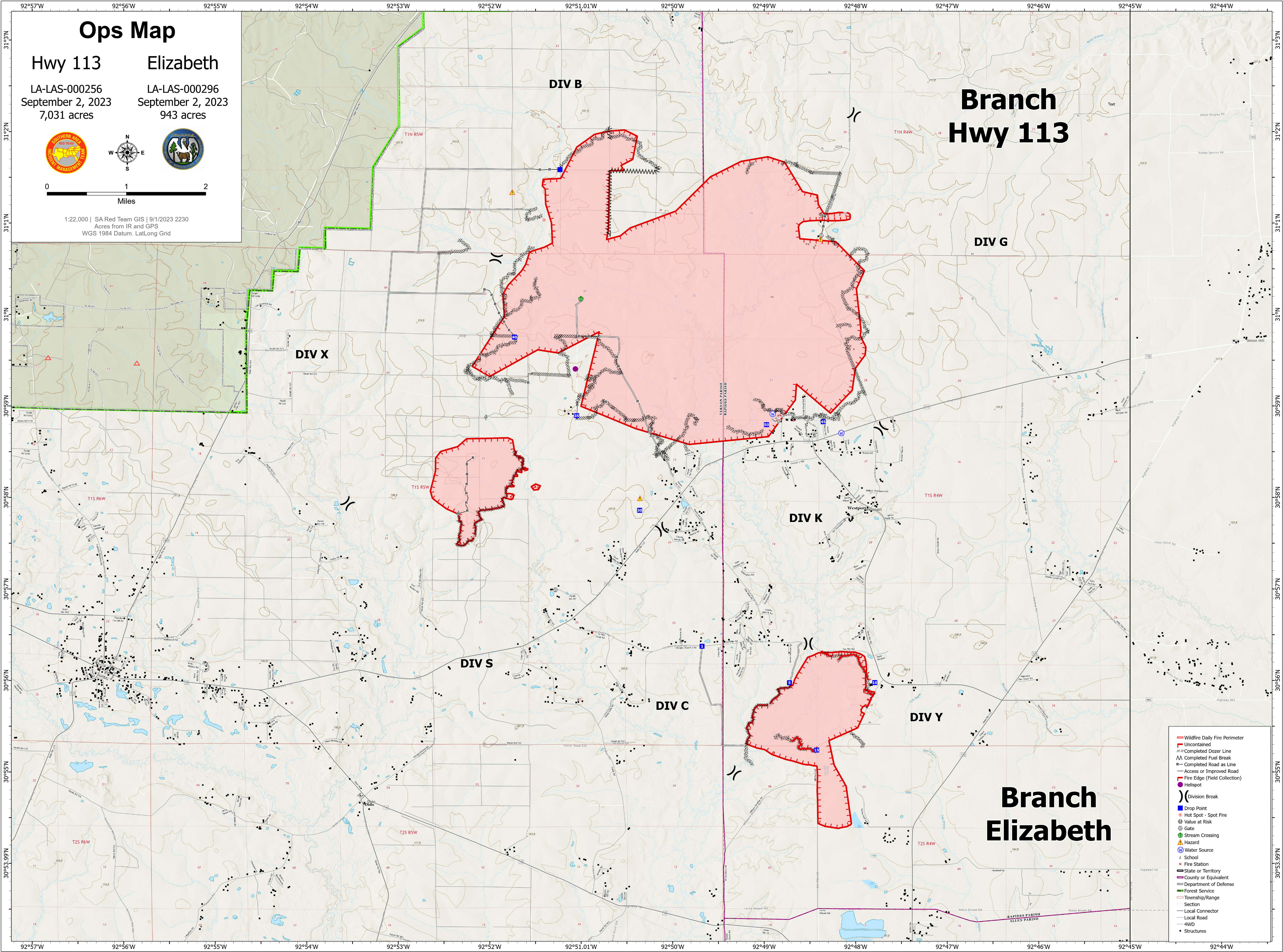
September 2, 2023

7,031 acres

943 acres



1:22,000 | SA Red Team GIS | 9/1/2023 2230
Acres from IR and GPS
WGS 1984 Datum, LatLong Grid



Branch Hwy 113

DIV G

DIV X

DIV K

DIV S

DIV C

DIV Y

Branch Elizabeth

- Wildfire Daily Fire Perimeter
- Uncontained
- Completed Dozer Line
- Completed Fuel Break
- Completed Road as Line
- Access or Improved Road
- Fire Edge (Field Collection)
- Hot Spot
- Division Break
- Drop Point
- Hot Spot - Spot Fire
- Value at Risk
- Gate
- Stream Crossing
- Hazard
- Water Source
- School
- Fire Station
- State or Territory
- County or Equivalent
- Department of Defense
- Forest Service
- Township/Range
- Section
- Local Connector
- Local Road
- 4WD
- Structures