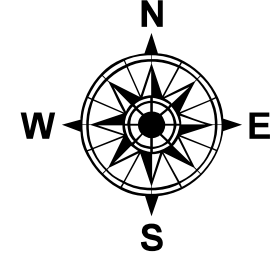


OPS Map

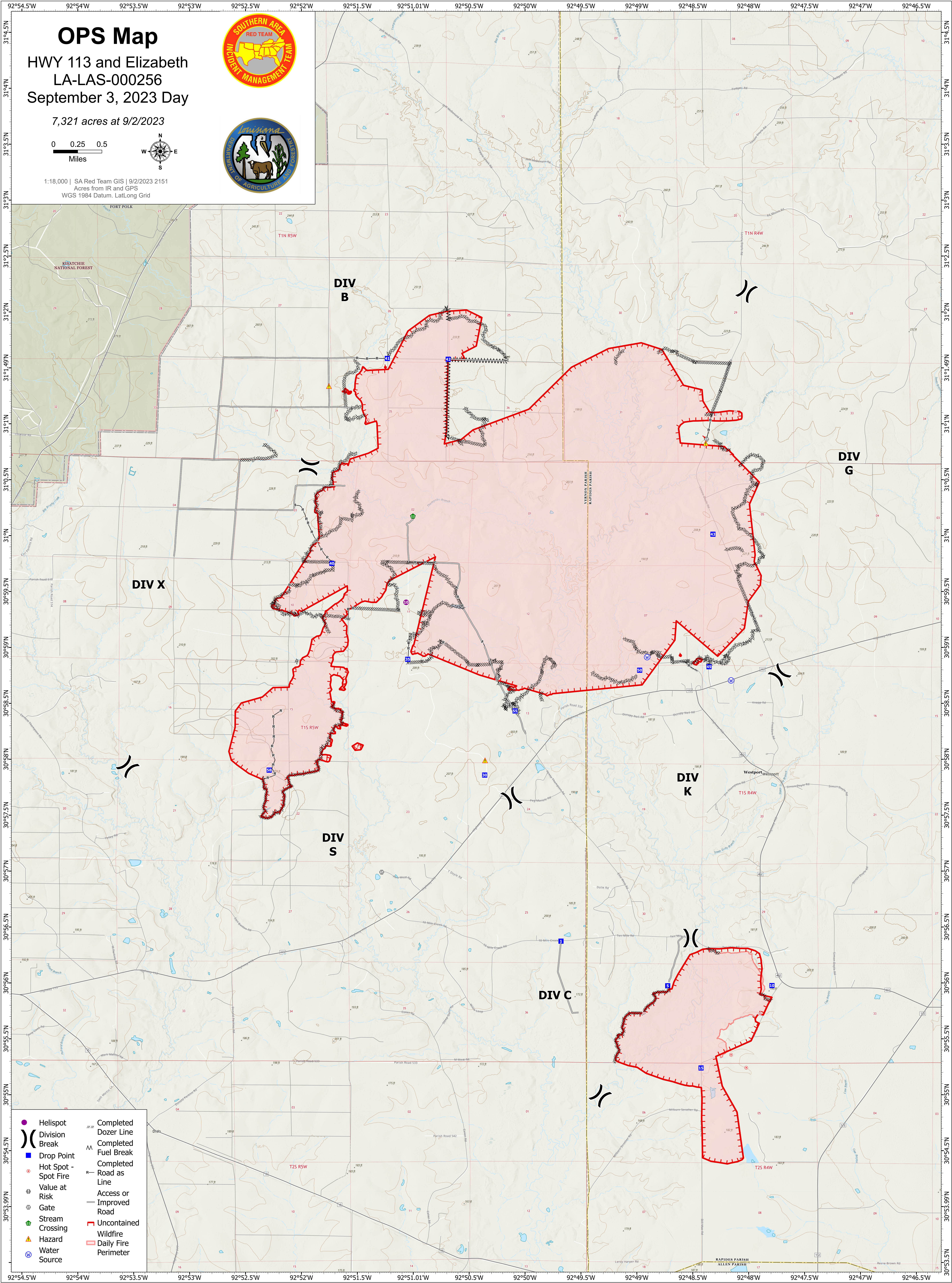
HWY 113 and Elizabeth
LA-LAS-000256
September 3, 2023 Day

7,321 acres at 9/2/2023

0 0.25 0.5
Miles



1:18,000 | SA Red Team GIS | 9/2/2023 2151
Acres from IR and GPS
WGS 1984 Datum, Lat/Long Grid



- | | |
|------------------------|-----------------------------|
| ● Helispot | --- Completed Dozer Line |
|)) Division Break | --- Completed Fuel Break |
| ■ Drop Point | --- Completed Road as Line |
| ● Hot Spot - Spot Fire | --- Access or Improved Road |
| ⊕ Value at Risk | --- Uncontained Wildfire |
| ⊖ Gate | --- Daily Fire Perimeter |
| ⊕ Stream Crossing | |
| ⚠ Hazard | |
| ⊕ Water Source | |