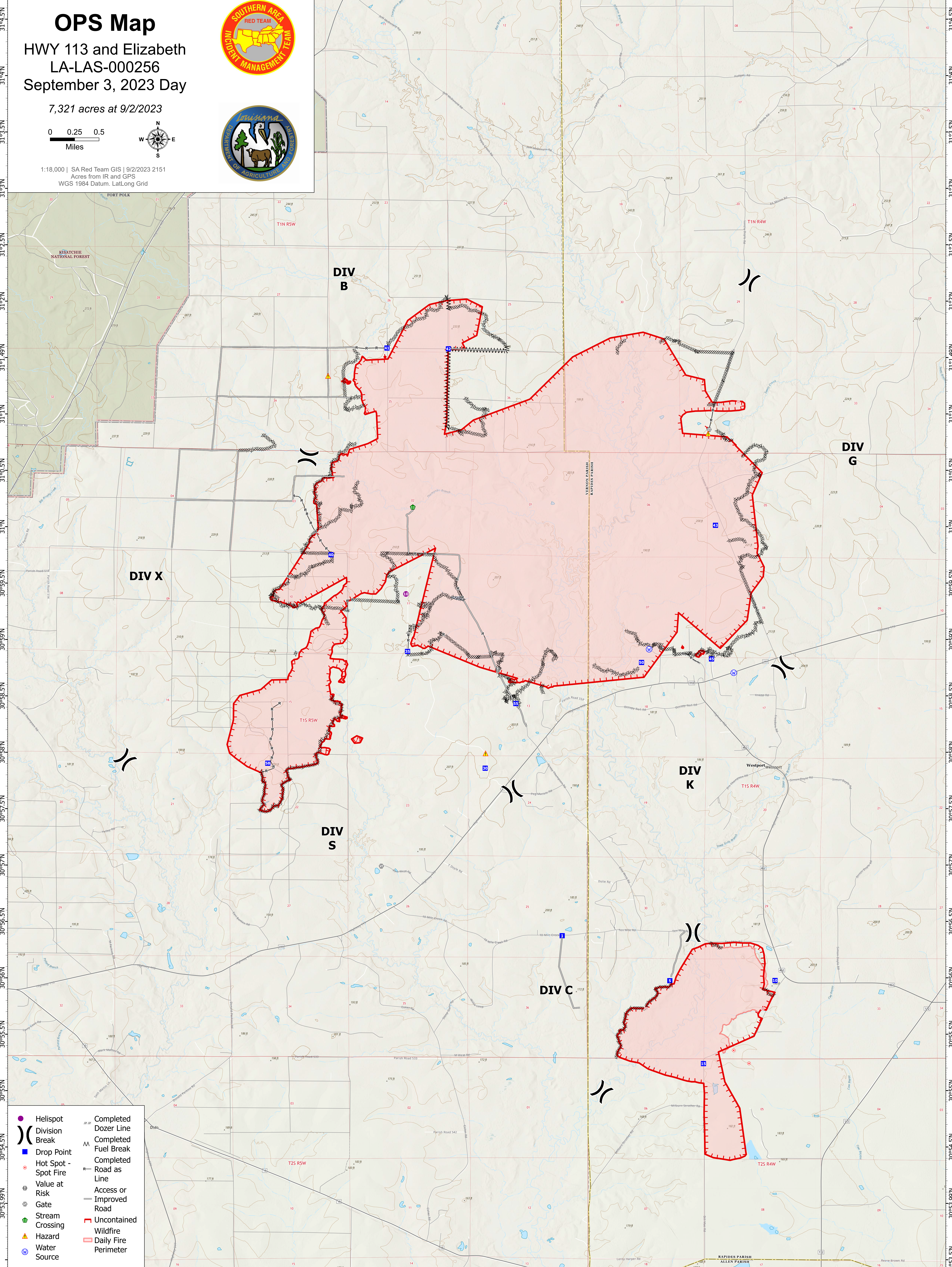


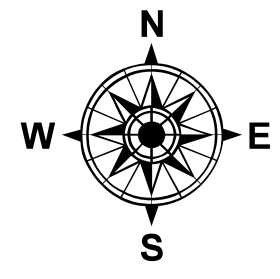
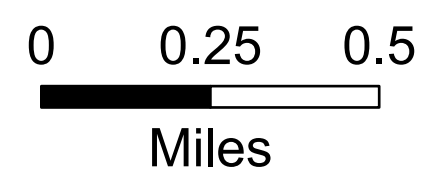
92°54.5'W 92°54'W 92°53.5'W 92°53'W 92°52.5'W 92°52'W 92°51.5'W 92°51.01'W 92°50.5'W 92°50'W 92°49.5'W 92°49'W 92°48.5'W 92°48'W 92°47.5'W 92°47'W 92°46.5'W



OPS Map

HWY 113 and Elizabeth
LA-LAS-000256
September 3, 2023 Day

7,321 acres at 9/2/2023



1:18,000 | SA Red Team GIS | 9/2/2023 2151
Acres from IR and GPS
WGS 1984 Datum, Lat/Long Grid



DIV B

DIV G

DIV X

DIV S

DIV K

DIV C

- Helispot
- Division Break
- Drop Point
- Hot Spot - Spot Fire
- Value at Risk
- Gate
- Stream Crossing
- Hazard
- Water Source
- Completed Dozer Line
- Completed Fuel Break
- Completed Road as Line
- Access or Improved Road
- Uncontained Wildfire
- Daily Fire Perimeter

92°54.5'W 92°54'W 92°53.5'W 92°53'W 92°52.5'W 92°52'W 92°51.5'W 92°51.01'W 92°50.5'W 92°50'W 92°49.5'W 92°49'W 92°48.5'W 92°48'W 92°47.5'W 92°47'W 92°46.5'W