

# Transportation

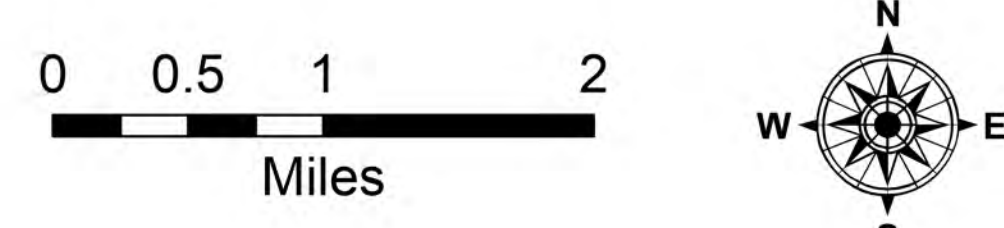
Hwy 113  
LA-LAS-000256

Elizabeth  
LA-LAS-000296

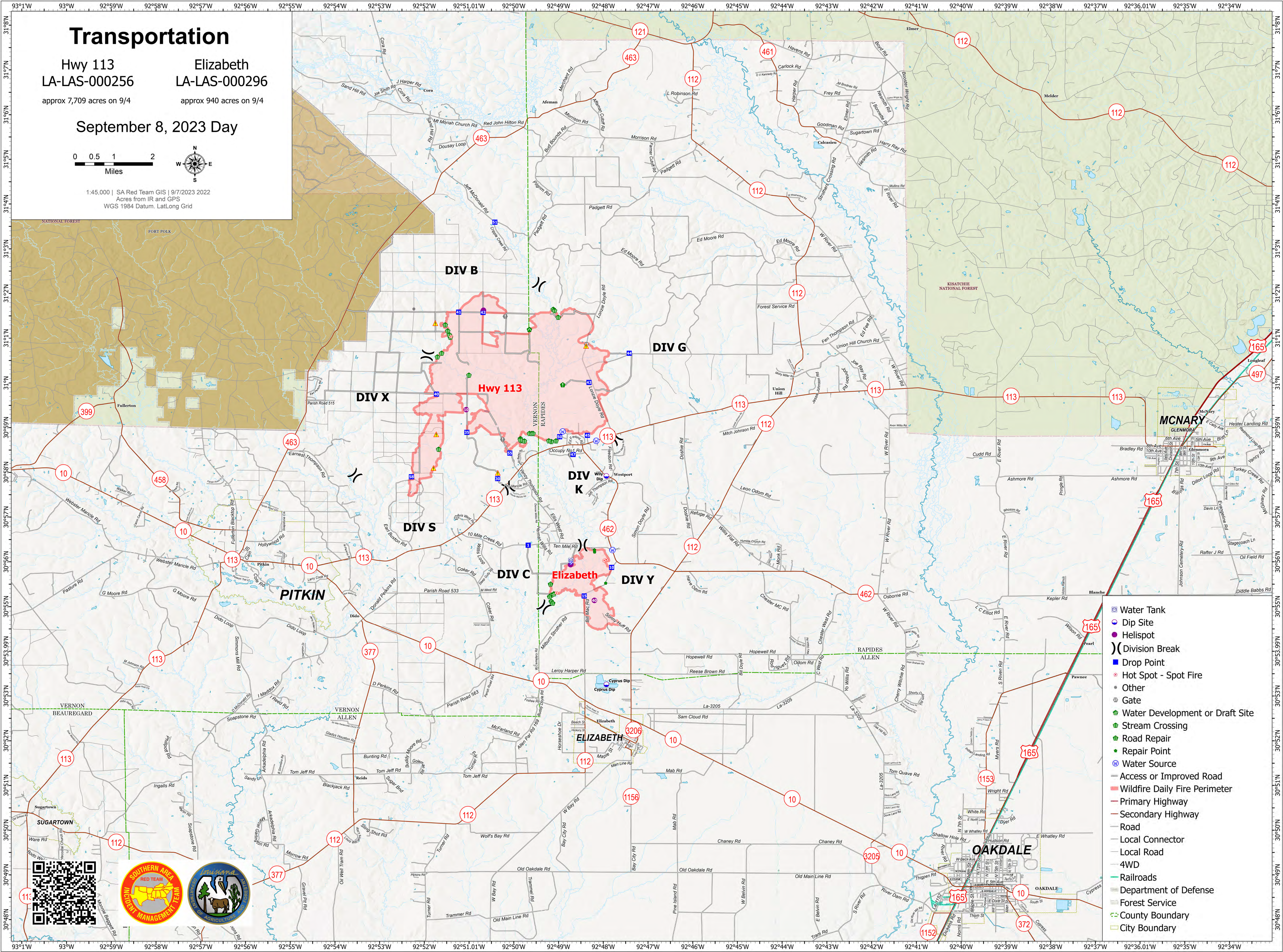
approx 7,709 acres on 9/4

approx 940 acres on 9/4

September 8, 2023 Day



1:45,000 | SA Red Team GIS | 9/7/2023 2022  
Acres from IR and GPS  
WGS 1984 Datum, Lat,Long Grid



- Water Tank
- Dip Site
- Helispot
- Division Break
- Drop Point
- Hot Spot - Spot Fire
- Other
- Gate
- Water Development or Draft Site
- Stream Crossing
- Road Repair
- Repair Point
- Water Source
- Access or Improved Road
- Wildfire Daily Fire Perimeter
- Primary Highway
- Secondary Highway
- Road
- Local Connector
- Local Road
- 4WD
- Railroads
- Department of Defense
- Forest Service
- County Boundary
- City Boundary

