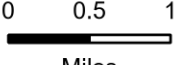


OPS Map

Hwy 113
LA-LAS-000256
September 11, 2023 Day

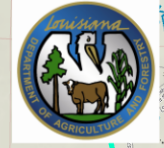
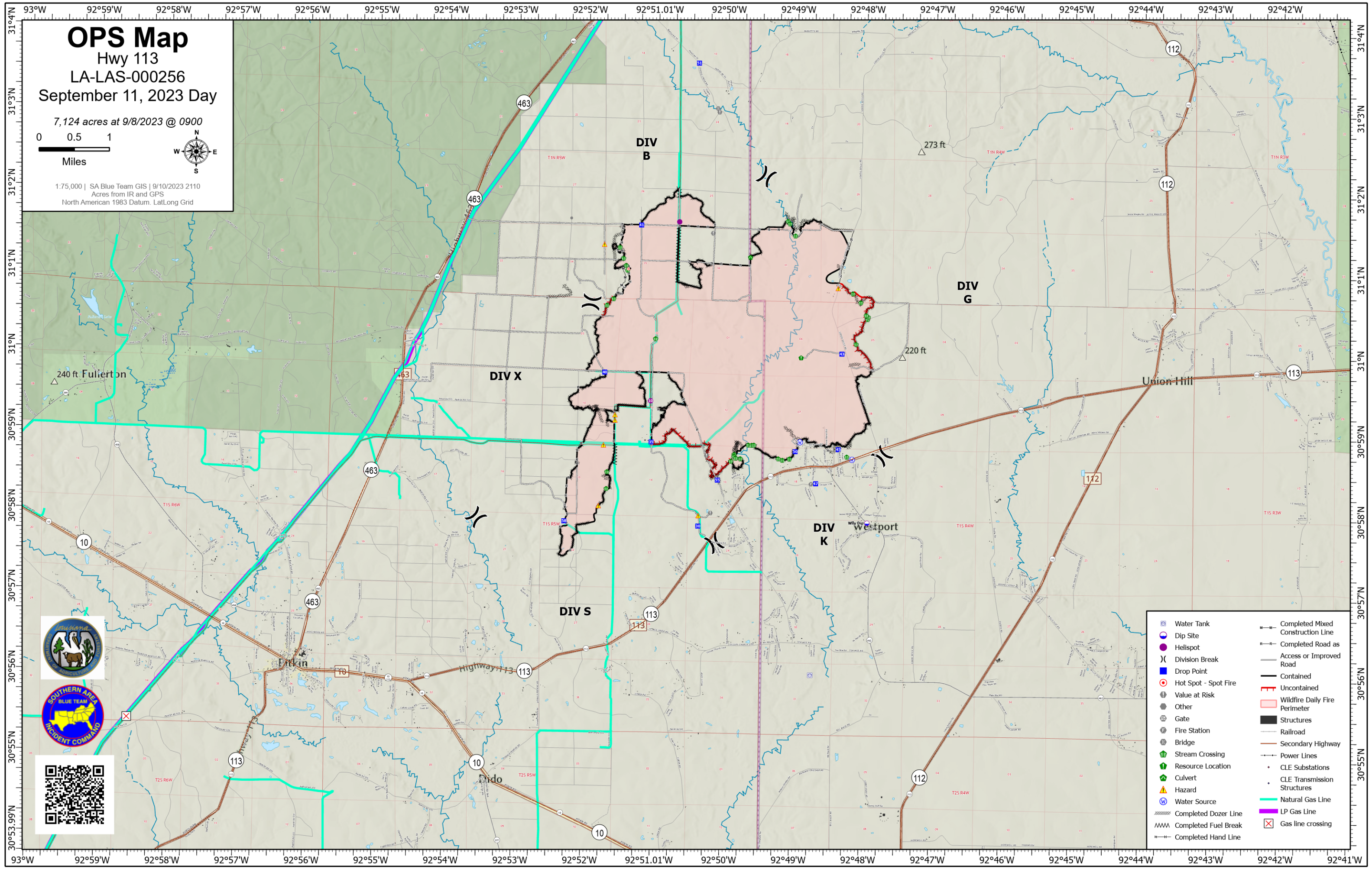
7,124 acres at 9/8/2023 @ 0900



Miles



1:75,000 | SA Blue Team GIS | 9/10/2023 2110
Acres from IR and GPS
North American 1983 Datum. LatLong Grid



- | | | | |
|--|----------------------|--|---|
| | Water Tank | | Completed Mixed Construction Line |
| | Dip Site | | Completed Road as Access or Improved Road |
| | Helispot | | Contained |
| | Division Break | | Uncontained |
| | Drop Point | | Wildfire Daily Fire Perimeter |
| | Hot Spot - Spot Fire | | Structures |
| | Value at Risk | | Railroad |
| | Other | | Secondary Highway |
| | Gate | | Power Lines |
| | Fire Station | | CLE Substations |
| | Bridge | | CLE Transmission Structures |
| | Stream Crossing | | Natural Gas Line |
| | Resource Location | | LP Gas Line |
| | Culvert | | Gas line crossing |
| | Hazard | | |
| | Water Source | | |
| | Completed Dozer Line | | |
| | Completed Fuel Break | | |
| | Completed Hand Line | | |