

# Transportation

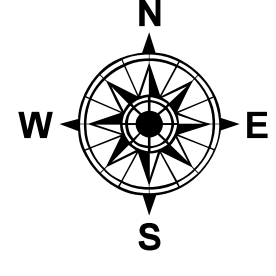
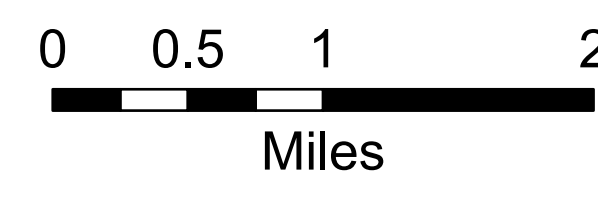
Hwy 113  
LA-LAS-000256

Elizabeth  
LA-LAS-000296

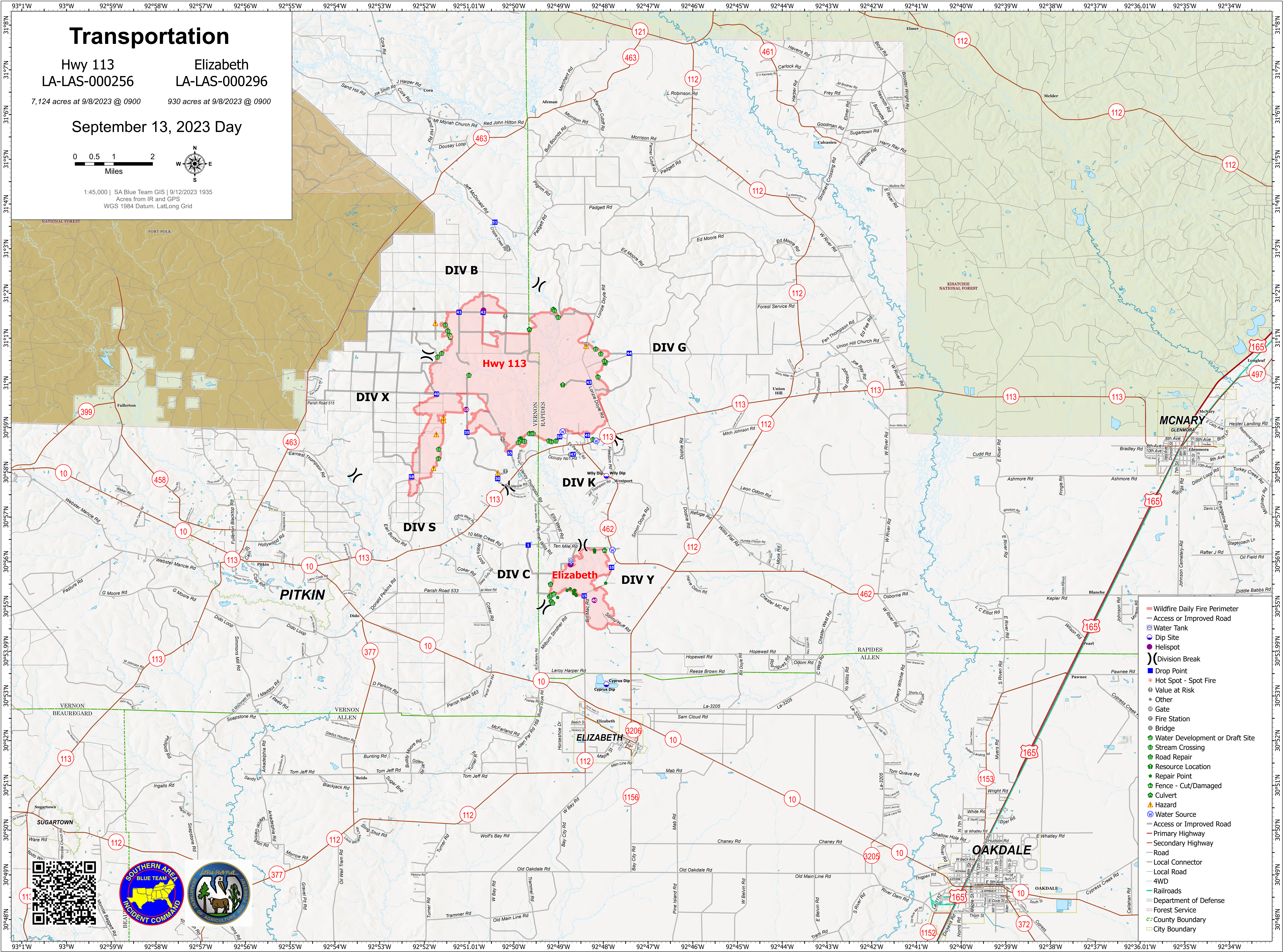
7,124 acres at 9/8/2023 @ 0900

930 acres at 9/8/2023 @ 0900

September 13, 2023 Day



1:45,000 | SA Blue Team GIS | 9/12/2023 1935  
Acres from IR and GPS  
WGS 1984 Datum, Lat,Long Grid



- Wildfire Daily Fire Perimeter
- Access or Improved Road
- Water Tank
- Dip Site
- Helispot
- Division Break
- Drop Point
- Hot Spot - Spot Fire
- Value at Risk
- Other
- Gate
- Fire Station
- Bridge
- Water Development or Draft Site
- Stream Crossing
- Road Repair
- Resource Location
- Repair Point
- Fence - Cut/Damaged
- Culvert
- Hazard
- Water Source
- Access or Improved Road
- Primary Highway
- Secondary Highway
- Road
- Local Connector
- Local Road
- 4WD
- Railroads
- Department of Defense
- Forest Service
- County Boundary
- City Boundary

