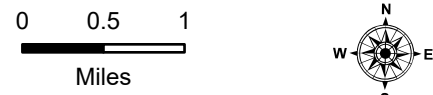


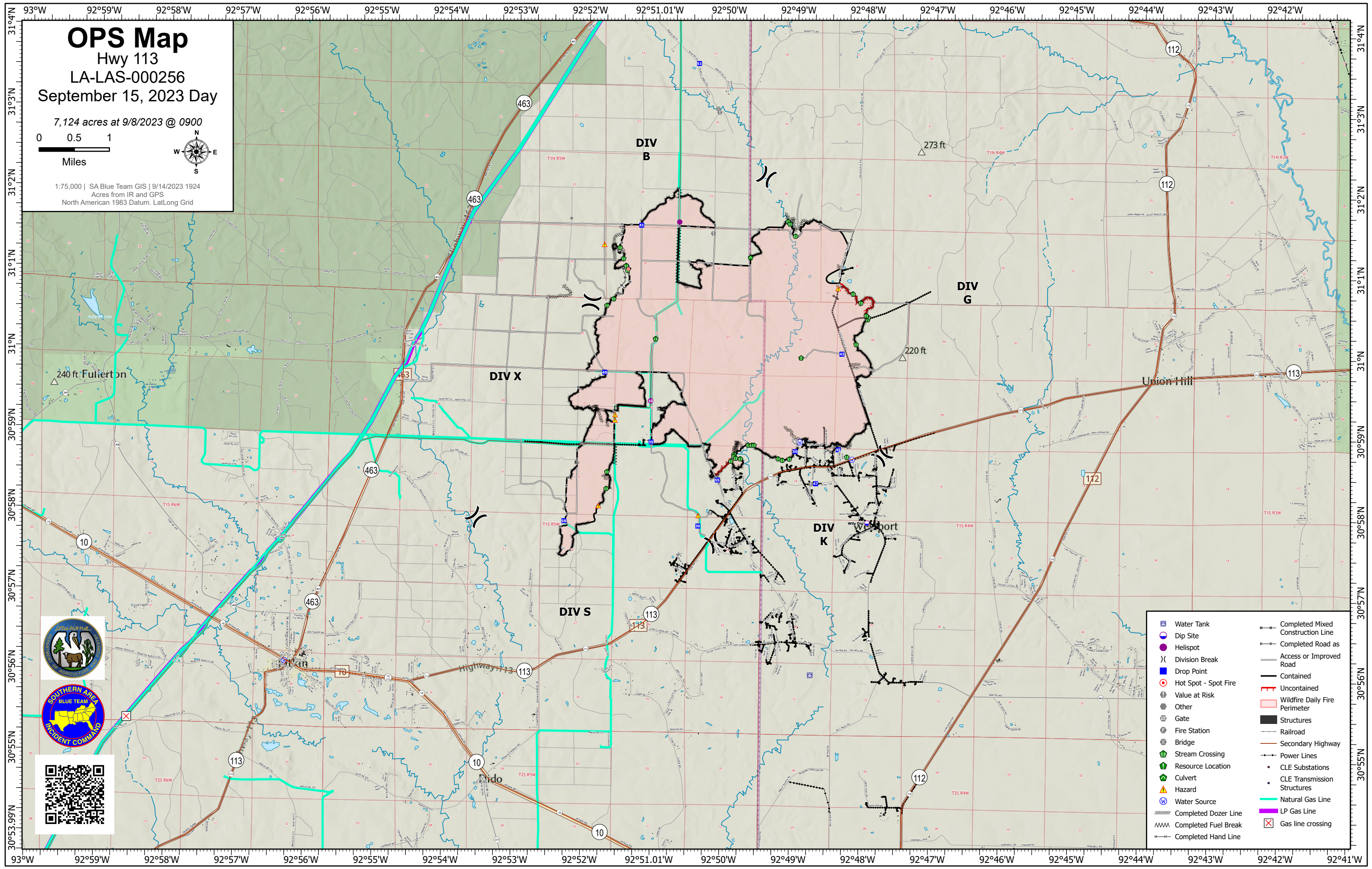
# OPS Map

Hwy 113  
LA-LAS-000256  
September 15, 2023 Day

7,124 acres at 9/8/2023 @ 0900



1:75,000 | SA Blue Team GIS | 9/14/2023 1924  
Acres from IR and GPS  
North American 1983 Datum. LatLong Grid



- |  |                      |  |   |
|--|----------------------|--|---|
|  | Water Tank           |  | Completed Mixed Construction Line         |
|  | Dip Site             |  | Completed Road as Access or Improved Road |
|  | Helispot             |  | Contained                                 |
|  | Division Break       |  | Uncontained                               |
|  | Drop Point           |  | Wildfire Daily Fire Perimeter             |
|  | Hot Spot - Spot Fire |  | Structures                                |
|  | Value at Risk        |  | Railroad                                  |
|  | Other                |  | Secondary Highway                         |
|  | Gate                 |  | Power Lines                               |
|  | Fire Station         |  | CLE Substations                           |
|  | Bridge               |  | CLE Transmission Structures               |
|  | Stream Crossing      |  | Natural Gas Line                          |
|  | Resource Location    |  | LP Gas Line                               |
|  | Culvert              |  | Gas line crossing                         |
|  | Hazard               |  |   |
|  | Water Source         |  |   |
|  | Completed Dozer Line |  |   |
|  | Completed Fuel Break |  |   |
|  | Completed Hand Line  |  |   |