

93°17.5'W 93°17'W 93°16.5'W 93°16'W 93°15.5'W 93°15'W 93°14.5'W 93°14'W 93°13.5'W 93°13'W 93°12.5'W 93°12'W 93°11.5'W

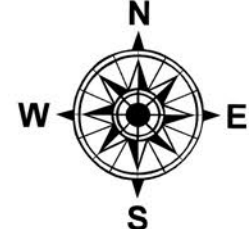
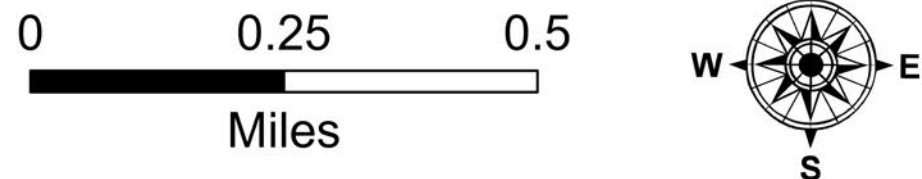
Operations



Ida
LAKIF-000258
9/5/2023

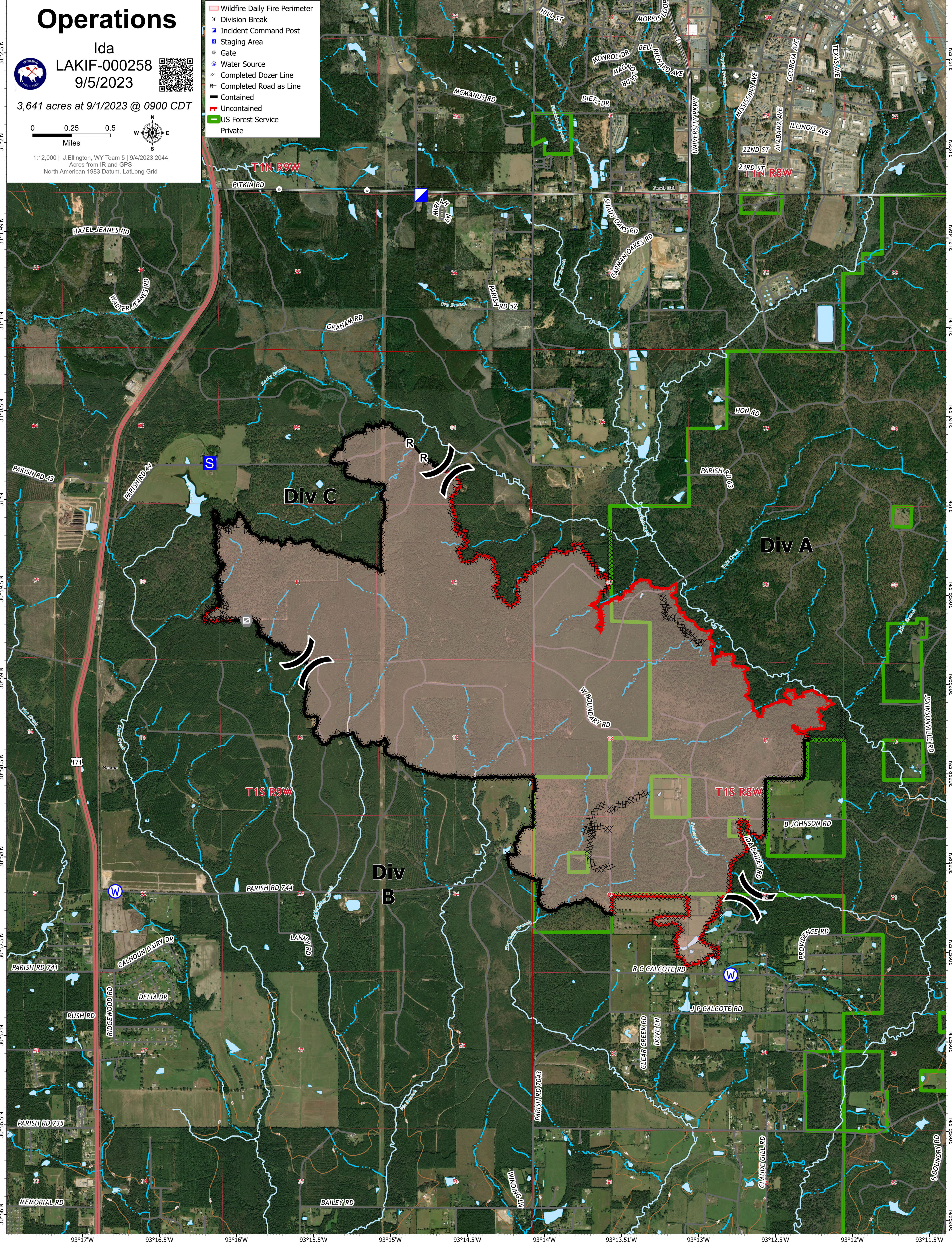


3,641 acres at 9/1/2023 @ 0900 CDT



1:12,000 | J.Ellington, WY Team 5 | 9/4/2023 2044
Aces from IR and GPS
North American 1983 Datum, Lat/Long Grid

- Wildfire Daily Fire Perimeter
- Division Break
- Incident Command Post
- Staging Area
- Gate
- Water Source
- Completed Dozer Line
- Completed Road as Line
- Contained
- Uncontained
- US Forest Service
- Private



93°17'W 93°16.5'W 93°16'W 93°15.5'W 93°15'W 93°14.5'W 93°14'W 93°13.5'W 93°13'W 93°12.5'W 93°12'W 93°11.5'W

31°2.5'N 31°2'N 31°1.5'N 31°1'N 31°0.5'N 31°0'N 30°59.5'N 30°59'N 30°58.5'N 30°58'N 30°57.5'N 30°57'N 30°56.5'N 30°56'N

31°2.5'N 31°2'N 31°1.5'N 31°1'N 31°0.5'N 31°0'N 30°59.5'N 30°59'N 30°58.5'N 30°58'N 30°57.5'N 30°57'N 30°56.5'N 30°56'N