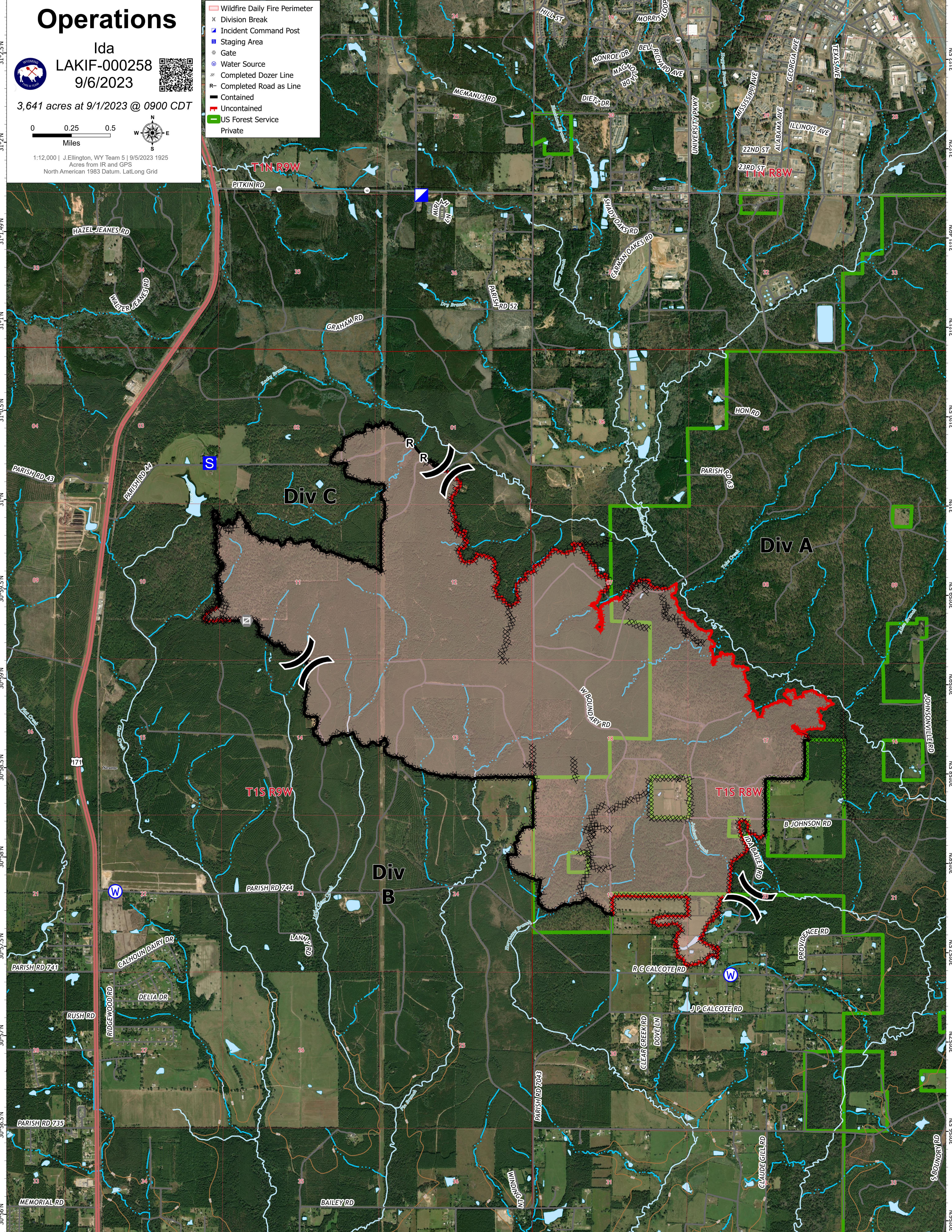


93°17.5'W 93°17'W 93°16.5'W 93°16'W 93°15.5'W 93°15'W 93°14.5'W 93°14'W 93°13.5'W 93°13'W 93°12.5'W 93°12'W 93°11.5'W



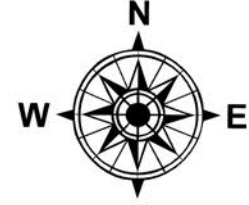
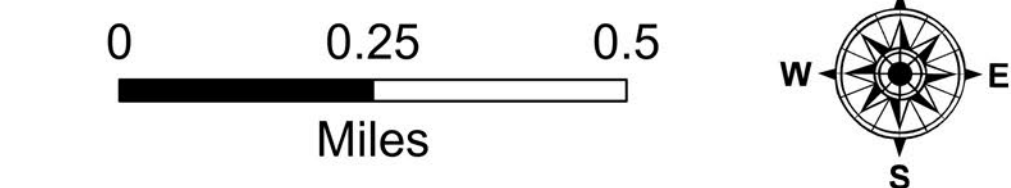
# Operations

Ida

LAKIF-000258

9/6/2023

3,641 acres at 9/1/2023 @ 0900 CDT



1:12,000 | J.Ellington, WY Team 5 | 9/5/2023 1925  
Acres from IR and GPS  
North American 1983 Datum, Lat/Long Grid

- ▬ Wildfire Daily Fire Perimeter
- X Division Break
- Incident Command Post
- Staging Area
- Gate
- Water Source
- X Completed Dozer Line
- R Completed Road as Line
- ▬ Contained
- ▬ Uncontained
- ▬ US Forest Service
- ▬ Private

31°2.5'N 31°2'N 31°1.5'N 31°1'N 31°0.5'N 31°0'N 30°59.5'N 30°59'N 30°58.5'N 30°58'N 30°57.5'N 30°57'N 30°56.5'N 30°56'N

93°17'W 93°16.5'W 93°16'W 93°15.5'W 93°15'W 93°14.5'W 93°14'W 93°13.5'W 93°13'W 93°12.5'W 93°12'W 93°11.5'W