

93°17.5'W 93°17'W 93°16.5'W 93°16'W 93°15.5'W 93°15'W 93°14.5'W 93°14'W 93°13.5'W 93°13'W 93°12.5'W 93°12'W 93°11.5'W

Operations

Ida
 LAKIF-000258
 9/7/2023

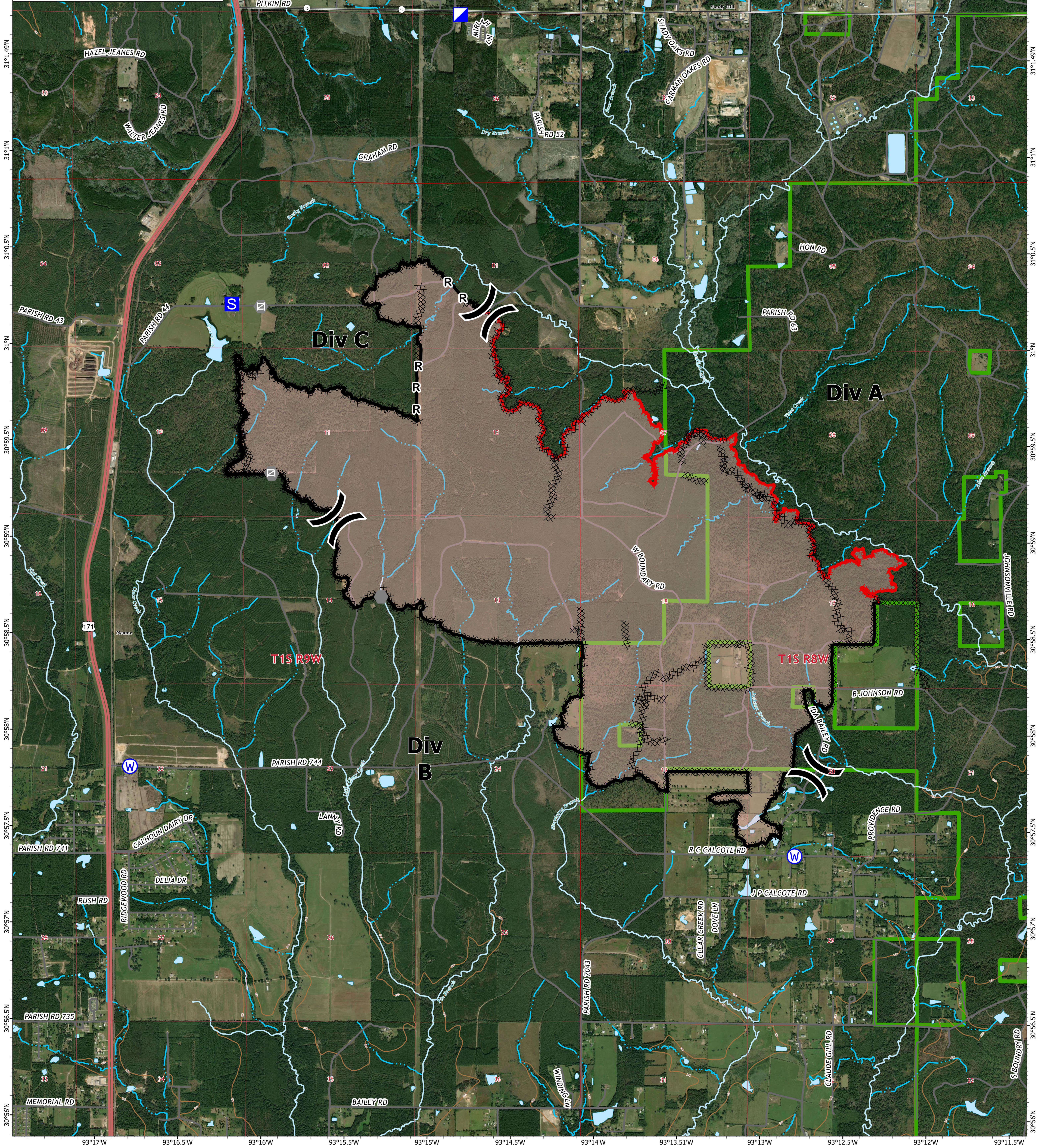


3,641 acres at 9/1/2023 @ 0900 CDT




1:12,000 | J.Ellington, WY Team 5 | 9/6/2023 1842
 Acres from IR and GPS
 North American 1983 Datum, Lat/Long Grid

- ▬ Wildfire Daily Fire Perimeter
- x Division Break
- Incident Command Post
- Staging Area
- Other (Unpassable Creek Crossing)
- Gate
- Water Source
- x Completed Dozer Line
- R Completed Road as Line
- ▬ Contained
- ▬ Uncontained
- ▬ US Forest Service
- ▬ Private



93°17'W 93°16.5'W 93°16'W 93°15.5'W 93°15'W 93°14.5'W 93°14'W 93°13.5'W 93°13'W 93°12.5'W 93°12'W 93°11.5'W