

93°17.5'W 93°17'W 93°16.5'W 93°16'W 93°15.5'W 93°15'W 93°14.5'W 93°14'W 93°13.5'W 93°13'W 93°12.5'W 93°12'W 93°11.5'W

# Suppression Repair

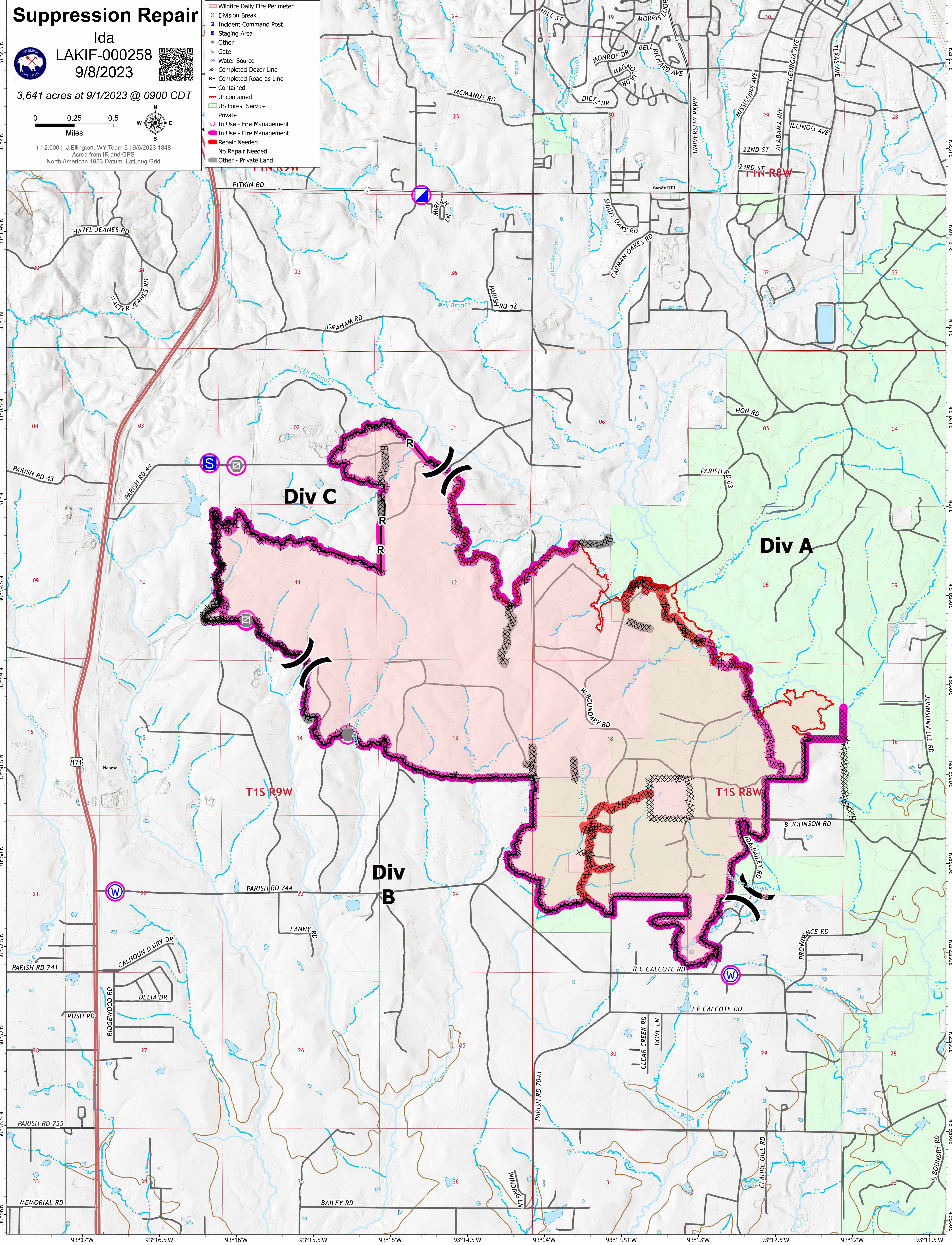
**Ida**  
**LAKIF-000258**  
**9/8/2023**

3,641 acres at 9/1/2023 @ 0900 CDT

0 0.25 0.5 Miles

1:12,000 | J.Ellington, WY Team 5 | 9/6/2023 1848  
 Acres from IR and GPS  
 North American 1983 Datum, Lat/Long Grid

- Wildfire Daily Fire Perimeter
- Division Break
- Incident Command Post
- Staging Area
- Other
- Gate
- Water Source
- Completed Dozer Line
- R- Completed Road as Line
- Contained
- Uncontained
- US Forest Service
- Private
- In Use - Fire Management
- In Use - Fire Management
- Repair Needed
- No Repair Needed
- Other - Private Land



93°17'W 93°16.5'W 93°16'W 93°15.5'W 93°15'W 93°14.5'W 93°14'W 93°13.5'W 93°13'W 93°12.5'W 93°12'W 93°11.5'W