

Operations

2023 Kisatchie NF

Support

9/1/2023

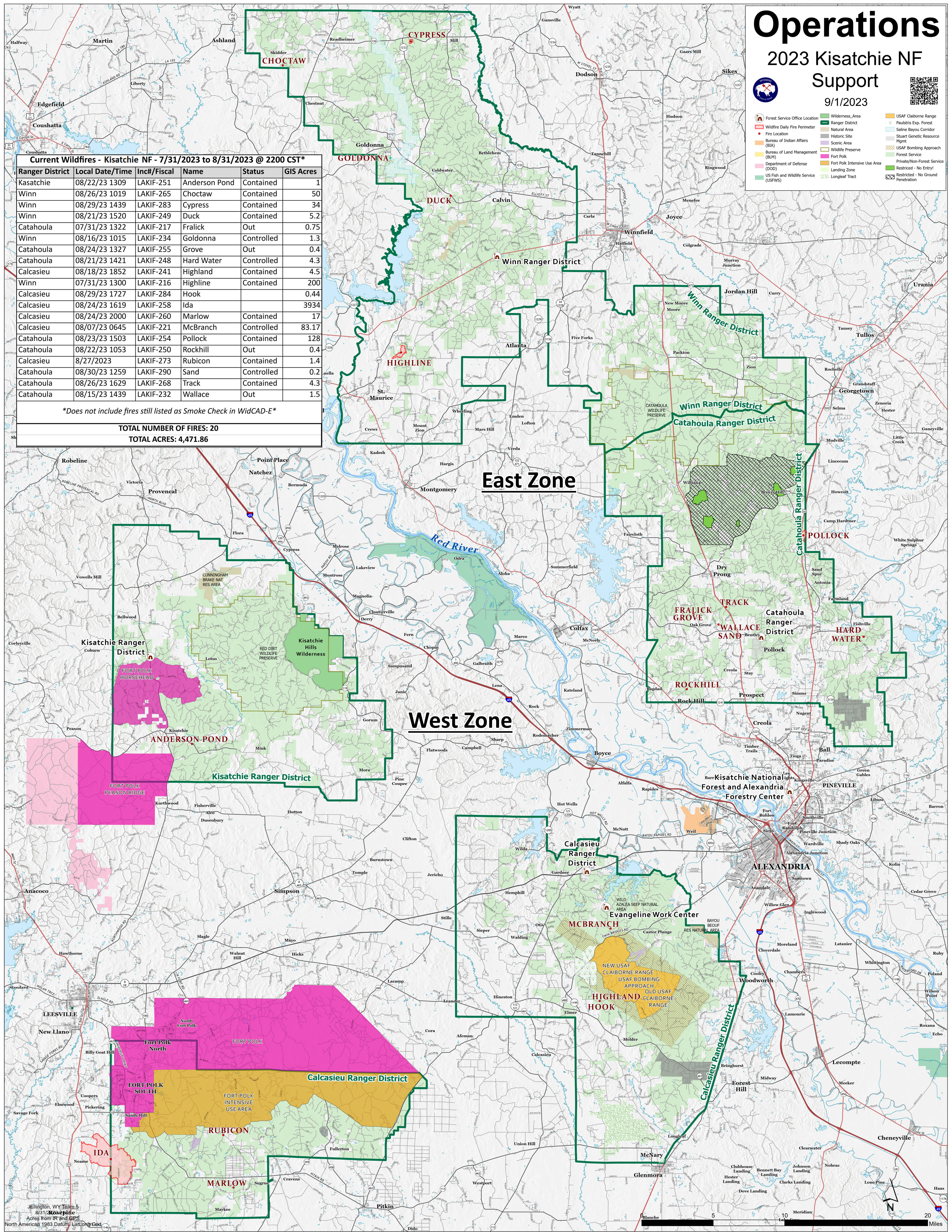


- Forest Service Office Location
- Wildfire Daily Fire Perimeter
- Fire Location
- Bureau of Indian Affairs
- Bureau of Land Management
- Department of Defense (DOD)
- US Fish and Wildlife Service (USFWS)
- Wilderness Area
- Ranger District
- Natural Area
- Historic Site
- Scenic Area
- Wildlife Preserve
- Fort Polk Intensive Use Area
- Landing Zone
- Longleaf Tract
- USAF Claiborne Range
- Paulsboro Exp. Forest
- Sabine Bayou Corridor
- Shreveport Genetic Resource Mgmt
- USAF Bombing Approach
- Forest Service
- Private/Non-Forest Service
- Restricted - No Entry
- Restricted - No Ground Penetration

Current Wildfires - Kisatchie NF - 7/31/2023 to 8/31/2023 @ 2200 CST*						
Ranger District	Local Date/Time	Inc#/Fiscal	Name	Status	GIS Acres	
Kasatchie	08/22/23 1309	LAKIF-251	Anderson Pond	Contained	1	
Winn	08/26/23 1019	LAKIF-265	Choctaw	Contained	50	
Winn	08/29/23 1439	LAKIF-283	Cypress	Contained	34	
Winn	08/21/23 1520	LAKIF-249	Duck	Contained	5.2	
Catahoula	07/31/23 1322	LAKIF-217	Fralick	Out	0.75	
Winn	08/16/23 1015	LAKIF-234	Goldonna	Controlled	1.3	
Catahoula	08/24/23 1327	LAKIF-255	Grove	Out	0.4	
Catahoula	08/21/23 1421	LAKIF-248	Hard Water	Controlled	4.3	
Calcasieu	08/18/23 1852	LAKIF-241	Highland	Contained	4.5	
Winn	07/31/23 1300	LAKIF-216	Highline	Contained	200	
Calcasieu	08/29/23 1727	LAKIF-284	Hook		0.44	
Calcasieu	08/24/23 1619	LAKIF-258	Ida		3934	
Calcasieu	08/24/23 2000	LAKIF-260	Marlow	Contained	17	
Calcasieu	08/07/23 0645	LAKIF-221	McBranch	Controlled	83.17	
Catahoula	08/23/23 1503	LAKIF-254	Pollock	Contained	128	
Catahoula	08/22/23 1053	LAKIF-250	Rockhill	Out	0.4	
Calcasieu	8/27/2023	LAKIF-273	Rubicon	Contained	1.4	
Catahoula	08/30/23 1259	LAKIF-290	Sand	Controlled	0.2	
Catahoula	08/26/23 1629	LAKIF-268	Track	Contained	4.3	
Catahoula	08/15/23 1439	LAKIF-232	Wallace	Out	1.5	

Does not include fires still listed as Smoke Check in WidCAD-E

TOTAL NUMBER OF FIRES: 20
TOTAL ACRES: 4,471.86



Jellington, WY Team 5
8/31/2023
Acres from IR and GPS
North American 1983 Datum, Lat/Long Grid

