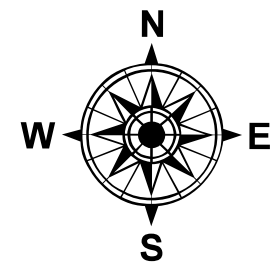
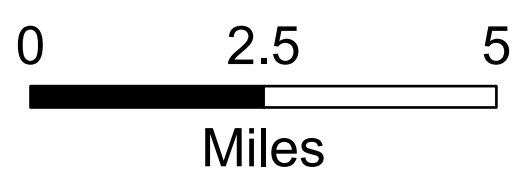


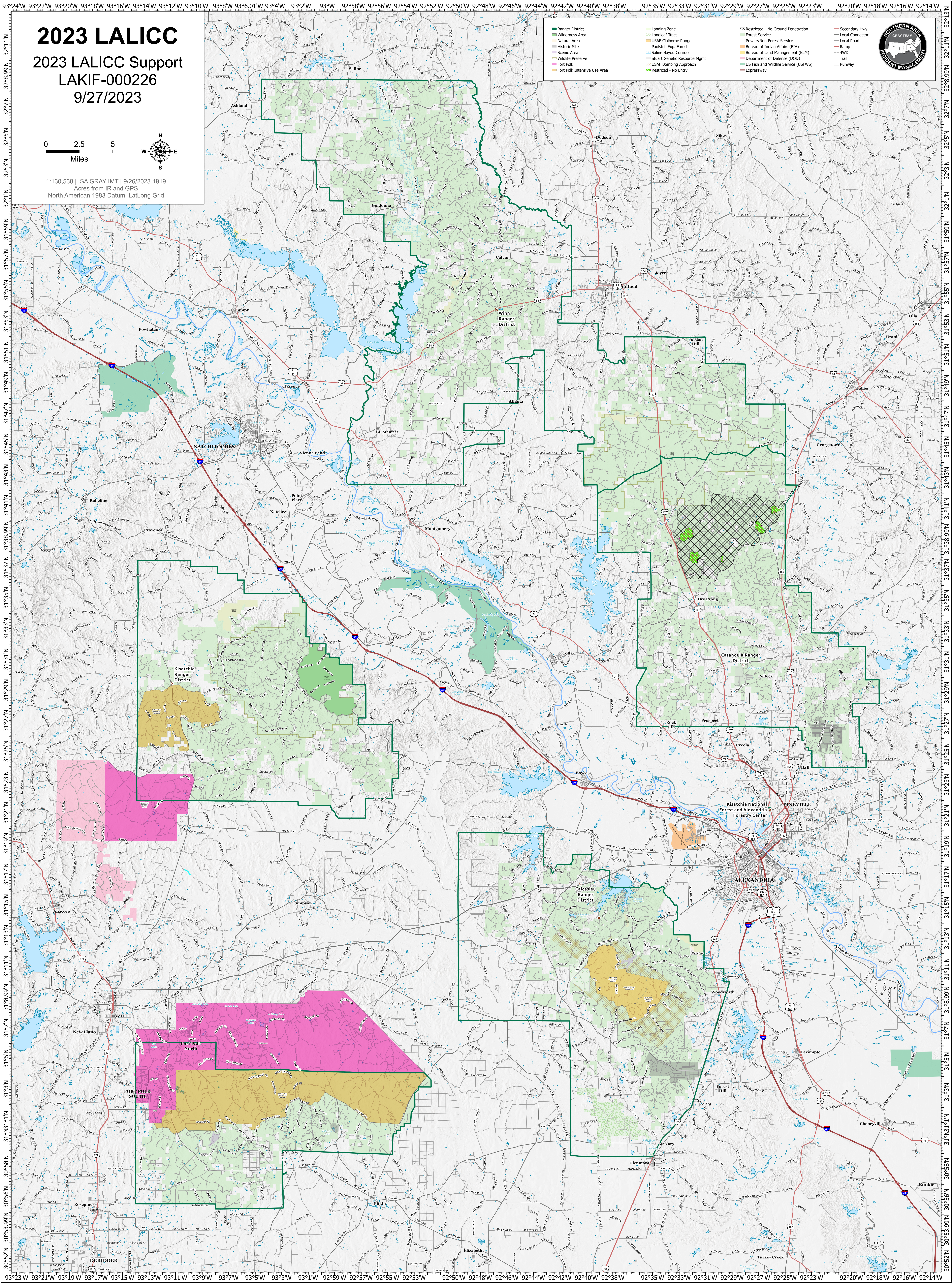
# 2023 LALICC

2023 LALICC Support  
LAKIF-000226  
9/27/2023



1:130,538 | SA GRAY IMT | 9/26/2023 1919  
Acres from IR and GPS  
North American 1983 Datum, LatLong Grid

<ul style="list-style-type: none"><li>Ranger District</li><li>Wilderness Area</li><li>Natural Area</li><li>Historic Site</li><li>Scenic Area</li><li>Wildlife Preserve</li><li>Fort Polk</li><li>Fort Polk Intensive Use Area</li></ul>	<ul style="list-style-type: none"><li>Landing Zone</li><li>Longleaf Tract</li><li>USAF Claiborne Range</li><li>Private/Non-Forest Service</li><li>Saline Bayou Corridor</li><li>Stuart Genetic Resource Mgmt</li><li>USAF Bombing Approach</li><li>Restricted - No Entry!</li></ul>	<ul style="list-style-type: none"><li>Restricted - No Ground Penetration</li><li>Forest Service</li><li>Private/Non-Forest Service</li><li>Bureau of Indian Affairs (BIA)</li><li>Bureau of Land Management (BLM)</li><li>Department of Defense (DOD)</li><li>US Fish and Wildlife Service (USFWS)</li><li>Expressway</li></ul>	<ul style="list-style-type: none"><li>Secondary Hwy</li><li>Local Connector</li><li>Local Road</li><li>Ramp</li><li>4WD</li><li>Trail</li><li>Runway</li></ul>
---	---	---	--



93°24'W 93°22'W 93°20'W 93°18'W 93°16'W 93°14'W 93°12'W 93°10'W 93°8'W 93°6.01'W 93°4'W 93°2'W 93°W 92°58'W 92°56'W 92°54'W 92°52'W 92°50'W 92°48'W 92°46'W 92°44'W 92°42'W 92°40'W 92°38'W 92°35'W 92°33'W 92°31'W 92°29'W 92°27'W 92°25'W 92°23'W 92°20'W 92°18'W 92°16'W 92°14'W