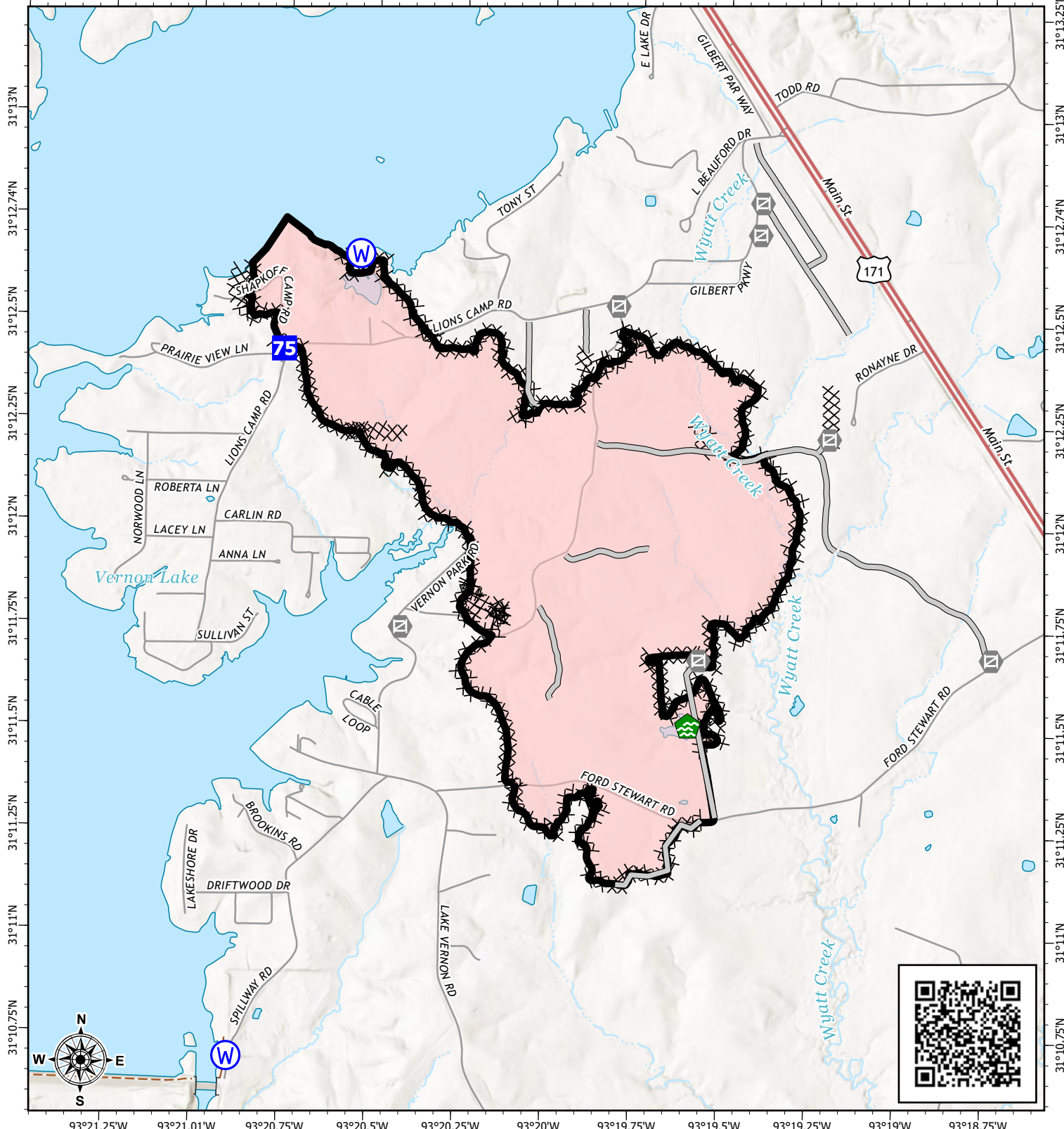


93°21.5'W 93°21.25'W 93°21.01'W 93°20.75'W 93°20.5'W 93°20.25'W 93°20'W 93°19.75'W 93°19.5'W 93°19.25'W 93°19'W 93°18.75'W



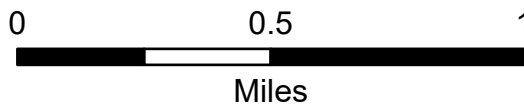
93°21.25'W 93°21.01'W 93°20.75'W 93°20.5'W 93°20.25'W 93°20'W 93°19.75'W 93°19.5'W 93°19.25'W 93°19'W 93°18.75'W

IAP

Lions Camp Road
LA-LAS-000281
October 2, 2023 Day
788 acres at 9/8/2023 @ 0900



- Drop Point
- Gate
- Water Development or Draft Site
- Water Source
- Completed Dozer Line
- Access or Improved Road
- Contained
- Wildfire Daily Fire Perimeter



1:24,000 | SA Gold Team GIS | 10/1/2023 1611
Acres from IR and GPS
North American 1983 Datum. LatLong Grid