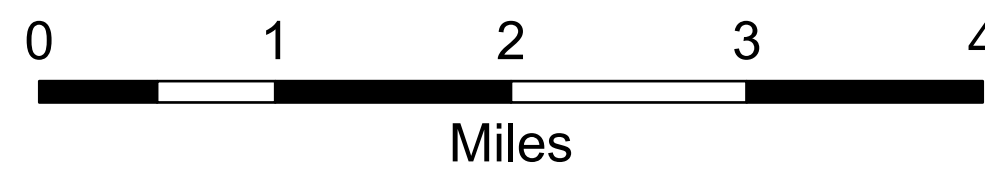
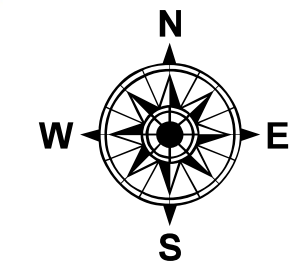


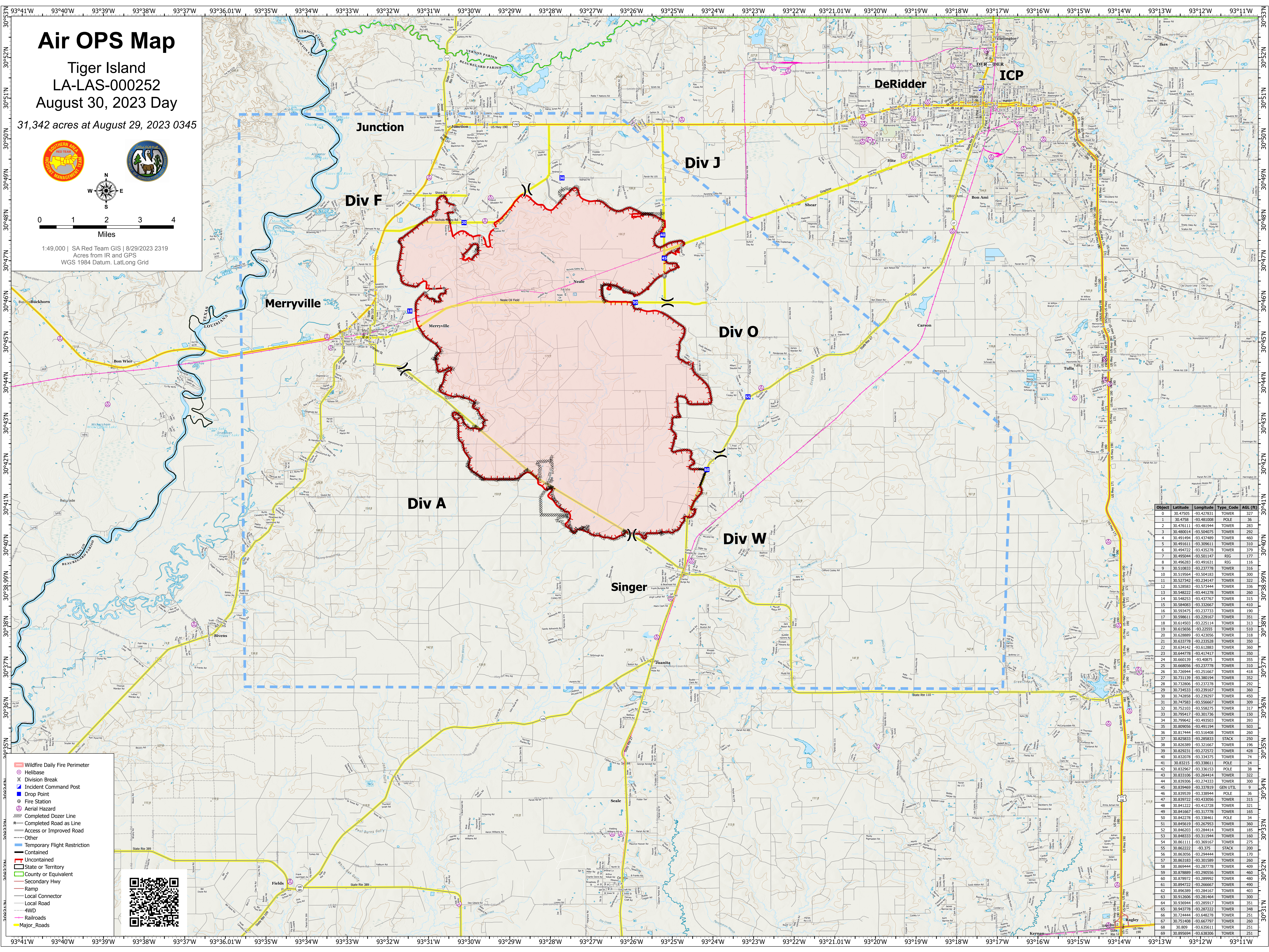
Air OPS Map

Tiger Island
LA-LAS-000252
August 30, 2023 Day

31,342 acres at August 29, 2023 0345



1:49,000 | SA Red Team GIS | 8/29/2023 2319
Acres from IR and GPS
WGS 1984 Datum, Lat/Long Grid



Object	Latitude	Longitude	Type	Code	AGL (ft)
0	30.47505	-93.42783	TOWER	322	322
1	30.4758	-93.481008	TOWER	26	26
2	30.47611	-93.481944	TOWER	283	283
3	30.480014	-93.504075	TOWER	292	292
4	30.491494	-93.437489	TOWER	460	460
5	30.491611	-93.309611	TOWER	310	310
6	30.49472	-93.45278	TOWER	379	379
7	30.495944	-93.501147	RIG	177	177
8	30.496283	-93.491631	RIG	116	116
9	30.510833	-93.237778	TOWER	316	316
10	30.519564	-93.504183	TOWER	300	300
11	30.527242	-93.234147	TOWER	322	322
12	30.528583	-93.37444	TOWER	336	336
13	30.548222	-93.441278	TOWER	260	260
14	30.548253	-93.437767	TOWER	315	315
15	30.584083	-93.332667	TOWER	410	410
16	30.593475	-93.237733	TOWER	190	190
17	30.598611	-93.29167	TOWER	351	351
18	30.614583	-93.25114	TOWER	313	313
19	30.615656	-93.22555	TOWER	510	510
20	30.628889	-93.423056	TOWER	318	318
21	30.633778	-93.33528	TOWER	350	350
22	30.634142	-93.612883	TOWER	360	360
23	30.644778	-93.417417	TOWER	350	350
24	30.660139	-93.40875	TOWER	355	355
25	30.668056	-93.237778	TOWER	310	310
26	30.726944	-93.251667	TOWER	418	418
27	30.731139	-93.380194	TOWER	352	352
28	30.732806	-93.237278	TOWER	292	292
29	30.744533	-93.29167	TOWER	360	360
30	30.742889	-93.23297	TOWER	450	450
31	30.747583	-93.556667	TOWER	309	309
32	30.752103	-93.558275	TOWER	317	317
33	30.795417	-93.301736	TOWER	150	150
34	30.799642	-93.493503	TOWER	393	393
35	30.809056	-93.491194	TOWER	503	503
36	30.817444	-93.516408	TOWER	260	260
37	30.825833	-93.395833	STACK	250	250
38	30.826389	-93.321667	TOWER	196	196
39	30.829231	-93.272572	TOWER	428	428
40	30.832078	-93.334375	TOWER	74	74
41	30.83215	-93.338611	POLE	24	24
42	30.832967	-93.38453	POLE	38	38
43	30.833106	-93.264414	TOWER	322	322
44	30.839306	-93.274333	TOWER	300	300
45	30.839469	-93.378119	GEN UTIL	9	9
46	30.839539	-93.338944	POLE	36	36
47	30.839722	-93.433056	TOWER	315	315
48	30.84222	-93.412728	TOWER	221	221
49	30.841667	-93.317778	TOWER	165	165
50	30.842278	-93.338461	POLE	34	34
51	30.845619	-93.267953	TOWER	360	360
52	30.846203	-93.284414	TOWER	185	185
53	30.848833	-93.313944	TOWER	160	160
54	30.861111	-93.369167	TOWER	275	275
55	30.862222	-93.375	STACK	200	200
56	30.863056	-93.294444	TOWER	170	170
57	30.863183	-93.301589	TOWER	260	260
58	30.869444	-93.287778	TOWER	409	409
59	30.878889	-93.290556	TOWER	460	460
60	30.878972	-93.389992	TOWER	480	480
61	30.894722	-93.366667	TOWER	490	490
62	30.896389	-93.284167	TOWER	403	403
63	30.912606	-93.281464	TOWER	300	300
64	30.936944	-93.285917	TOWER	351	351
65	30.93978	-93.287222	TOWER	348	348
66	30.744444	-93.648278	TOWER	251	251
67	30.751408	-93.667797	TOWER	260	260
68	30.809	-93.635611	TOWER	251	251
69	30.895694	-93.638306	TOWER	251	251



- Wildfire Daily Fire Perimeter
- Helibase
- Division Break
- Incident Command Post
- Drop Point
- Fire Station
- Aerial Hazard
- Completed Dozer Line
- Access or Improved Road
- Other
- Temporary Flight Restriction
- Contained
- Uncontained
- State or Territory
- County or Equivalent
- Secondary Hwy
- Ramp
- Local Connector
- Local Road
- 4WD
- Railroads
- Major Roads