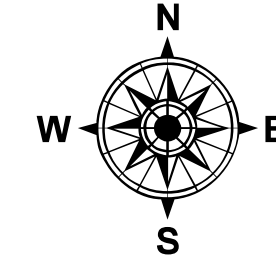
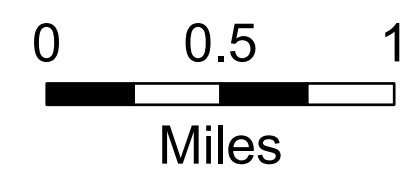


OPS Map

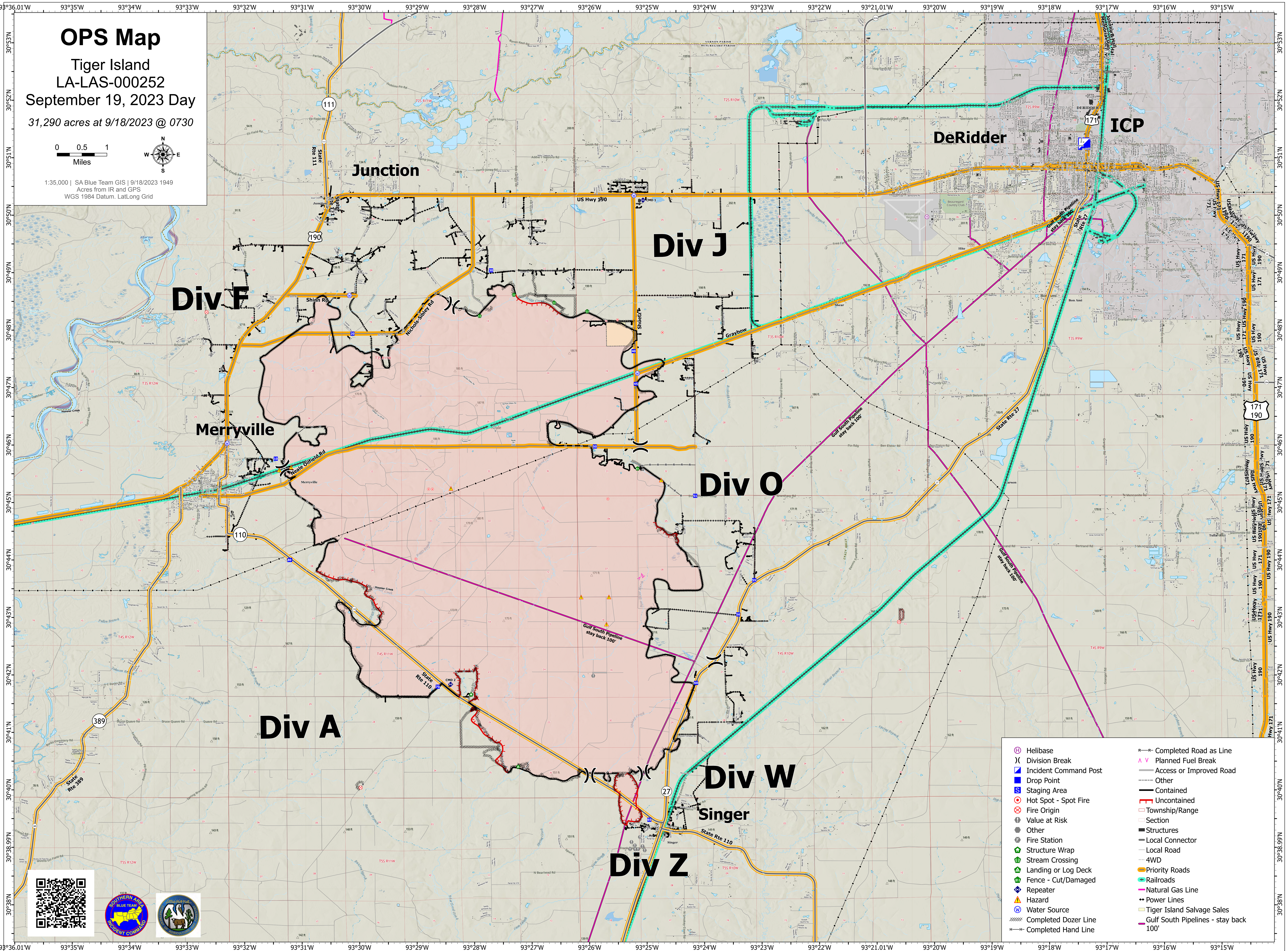
Tiger Island
LA-LAS-000252

September 19, 2023 Day

31,290 acres at 9/18/2023 @ 0730



1:35,000 | SA Blue Team GIS | 9/18/2023 1949
Acres from IR and GPS
WGS 1984 Datum, Lat/Long Grid



- | | |
|-----------------------|---------------------------------------|
| Helibase | Completed Road as Line |
| Division Break | Planned Fuel Break |
| Incident Command Post | Access or Improved Road |
| Drop Point | Other |
| Staging Area | Contained |
| Hot Spot - Spot Fire | Uncontained |
| Fire Origin | Township/Range |
| Value at Risk | Section |
| Other | Structures |
| Fire Station | Local Connector |
| Structure Wrap | Local Road |
| Stream Crossing | 4WD |
| Landing or Log Deck | Priority Roads |
| Fence - Cut/Damaged | Railroads |
| Repeater | Natural Gas Line |
| Hazard | Power Lines |
| Water Source | Tiger Island Salvage Sales |
| Completed Dozer Line | Gulf South Pipelines - stay back 100' |
| Completed Hand Line | |

