

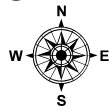
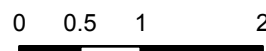
# OPS Map

Tiger Island

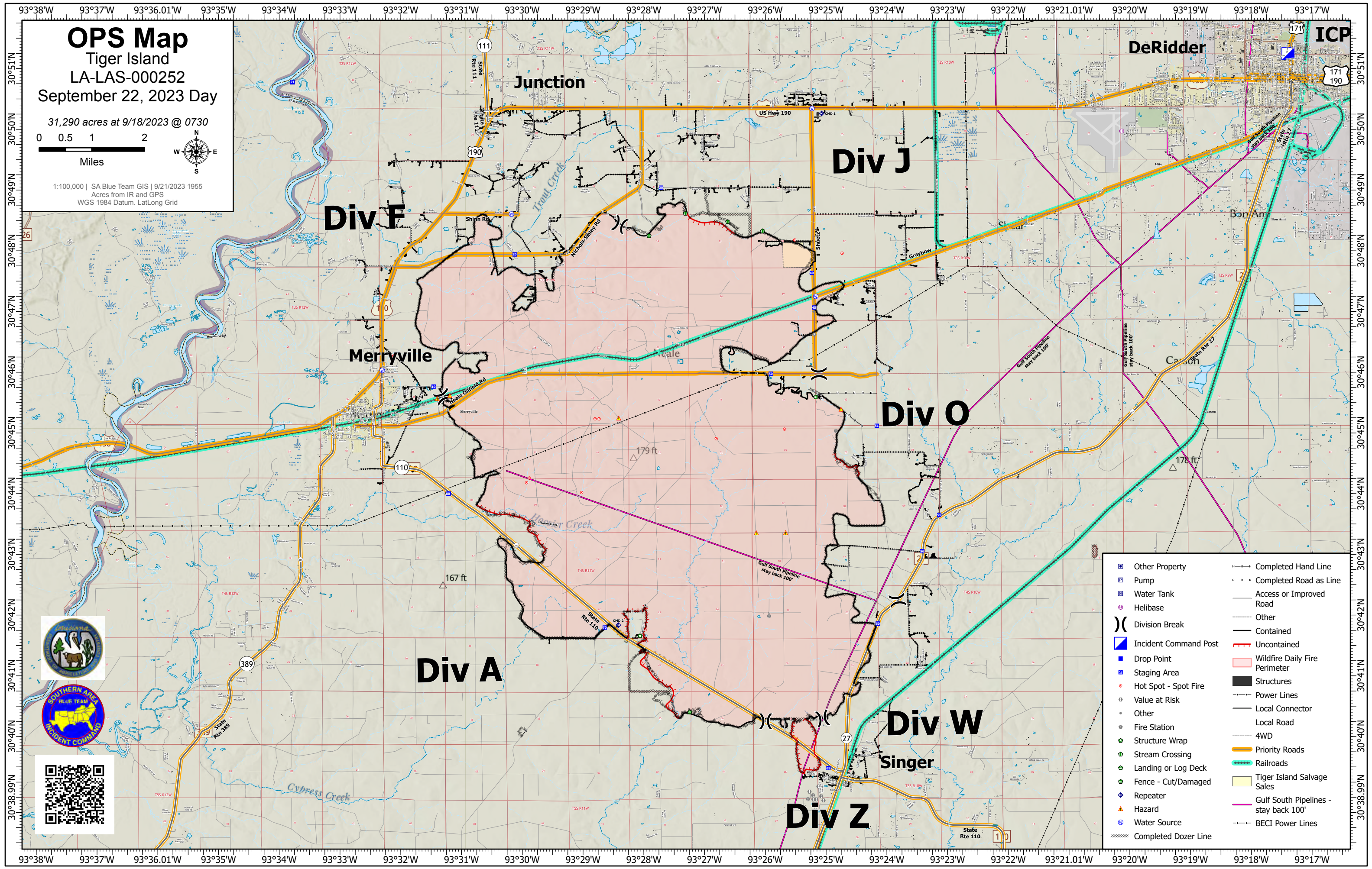
LA-LAS-000252

September 22, 2023 Day

31,290 acres at 9/18/2023 @ 0730



1:100,000 | SA Blue Team GIS | 9/21/2023 1955  
Acres from IR and GPS  
WGS 1984 Datum, LatLong Grid



- |                       |                                       |
|-----------------------|---------------------------------------|
| Other Property        | Completed Hand Line                   |
| Pump                  | Completed Road as Line                |
| Water Tank            | Access or Improved Road               |
| Helibase              | Other                                 |
| Contained             | Uncontained                           |
| Division Break        | Wildfire Daily Fire Perimeter         |
| Incident Command Post | Structures                            |
| Drop Point            | Power Lines                           |
| Staging Area          | Local Connector                       |
| Hot Spot - Spot Fire  | 4WD                                   |
| Value at Risk         | Priority Roads                        |
| Other                 | Railroads                             |
| Fire Station          | Tiger Island Salvage Sales            |
| Structure Wrap        | Gulf South Pipelines - stay back 100' |
| Stream Crossing       | BECI Power Lines                      |
| Landing or Log Deck   |                                       |
| Fence - Cut/Damaged   |                                       |
| Repeater              |                                       |
| Hazard                |                                       |
| Water Source          |                                       |
| Completed Dozer Line  |                                       |

