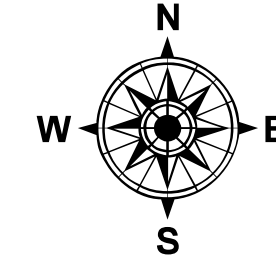
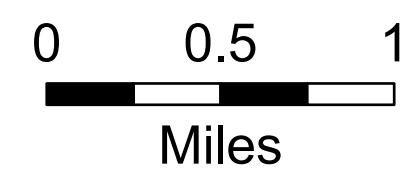


# OPS Map

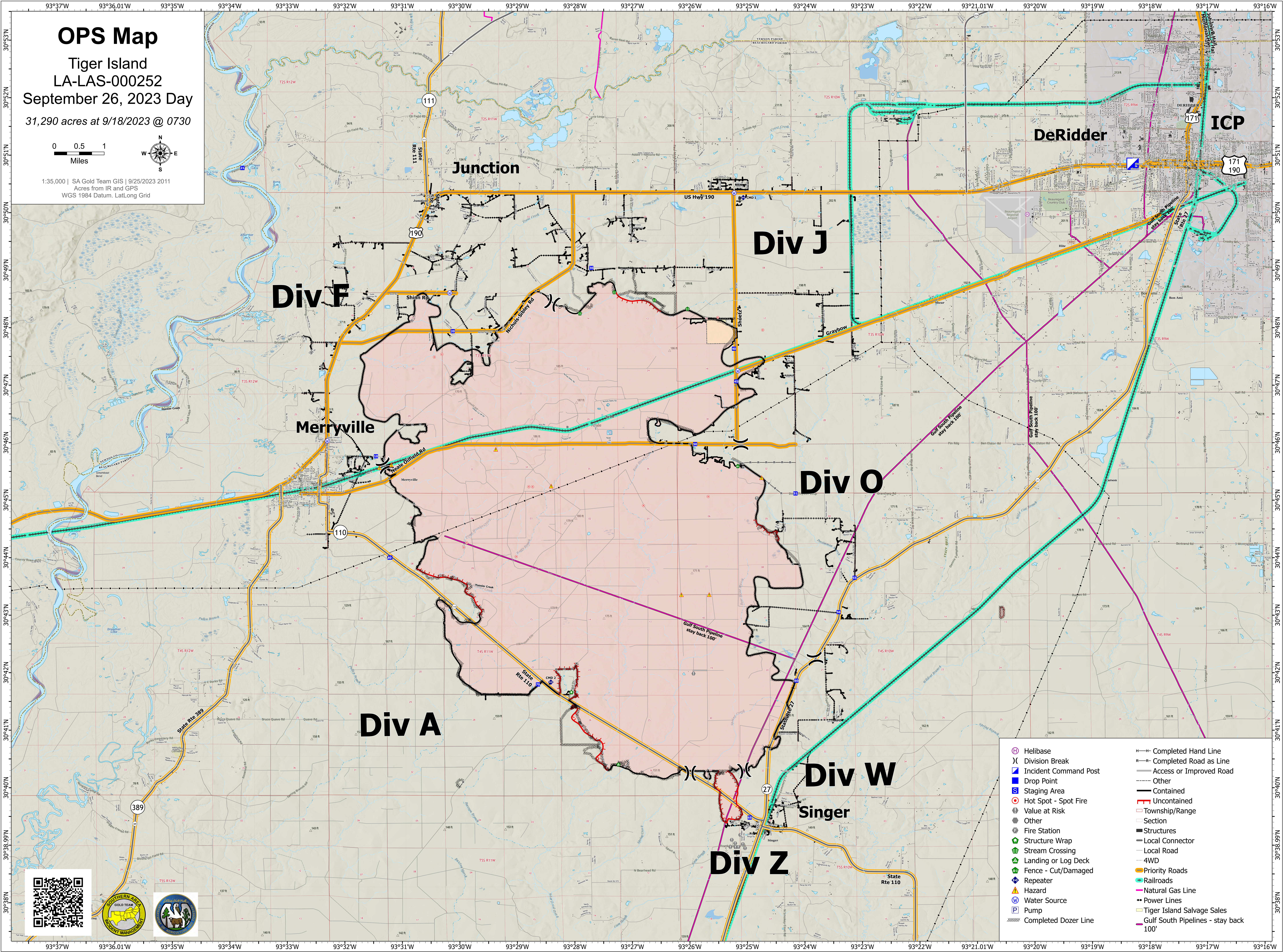
Tiger Island  
LA-LAS-000252

September 26, 2023 Day

31,290 acres at 9/18/2023 @ 0730



1:35,000 | SA Gold Team GIS | 9/25/2023 2011  
Acres from IR and GPS  
WGS 1984 Datum, Lat/Long Grid



|  |                       |  |                                       |
|--|-----------------------|--|---------------------------------------|
|  | Heli-base             |  | Completed Hand Line                   |
|  | Division Break        |  | Completed Road as Line                |
|  | Incident Command Post |  | Access or Improved Road               |
|  | Drop Point            |  | Other                                 |
|  | Staging Area          |  | Contained                             |
|  | Hot Spot - Spot Fire  |  | Uncontained                           |
|  | Value at Risk         |  | Township/Range                        |
|  | Fire Station          |  | Section                               |
|  | Structure Wrap        |  | Structures                            |
|  | Landing or Log Deck   |  | Local Connector                       |
|  | Fence - Cut/Damaged   |  | Local Road                            |
|  | Repeater              |  | 4WD                                   |
|  | Hazard                |  | Priority Roads                        |
|  | Water Source          |  | Railroads                             |
|  | Pump                  |  | Natural Gas Line                      |
|  | Completed Dozer Line  |  | Power Lines                           |
|  |                       |  | Tiger Island Salvage Sales            |
|  |                       |  | Gulf South Pipelines - stay back 100' |

