

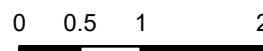
# OPS Map

Tiger Island

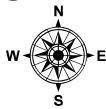
LA-LAS-000252

September 27, 2023 Day

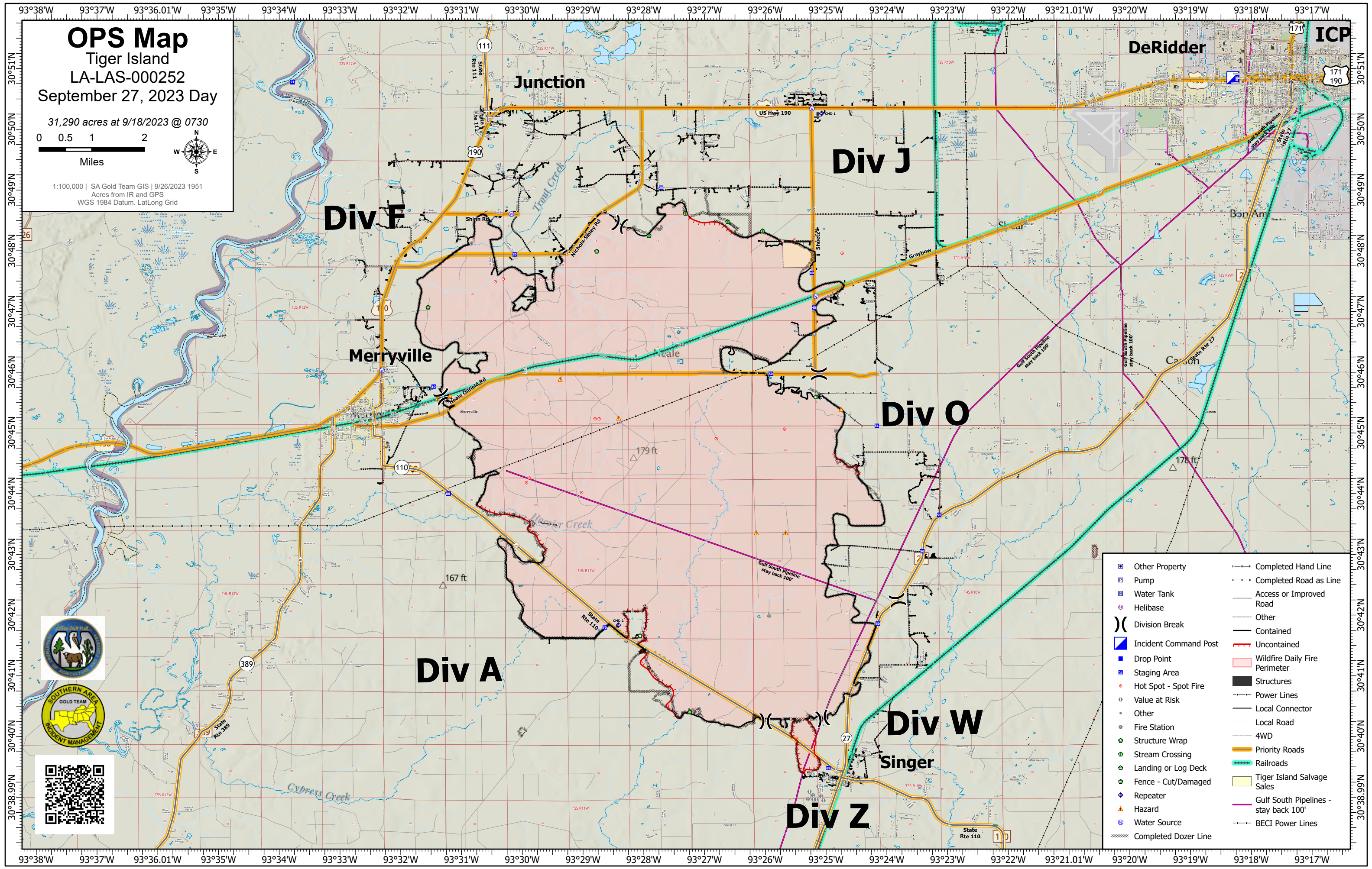
31,290 acres at 9/18/2023 @ 0730



Miles



1:100,000 | SA Gold Team GIS | 9/26/2023 1951  
Acres from IR and GPS  
WGS 1984 Datum, LatLong Grid



- |                       |                                       |
|-----------------------|---------------------------------------|
| Other Property        | Completed Hand Line                   |
| Pump                  | Completed Road as Line                |
| Water Tank            | Access or Improved Road               |
| Helibase              | Other                                 |
| Division Break        | Contained                             |
| Incident Command Post | Uncontained                           |
| Drop Point            | Wildfire Daily Fire Perimeter         |
| Staging Area          | Structures                            |
| Hot Spot - Spot Fire  | Power Lines                           |
| Value at Risk         | Local Connector                       |
| Other                 | Local Road                            |
| Fire Station          | 4WD                                   |
| Structure Wrap        | Priority Roads                        |
| Stream Crossing       | Railroads                             |
| Landing or Log Deck   | Tiger Island Salvage Sales            |
| Fence - Cut/Damaged   | Gulf South Pipelines - stay back 100' |
| Repeater              | BECI Power Lines                      |
| Hazard                | Completed Dozer Line                  |
| Water Source          |                                       |