

Air Ops

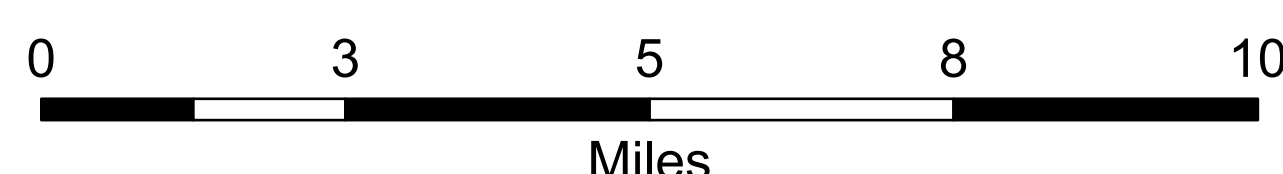
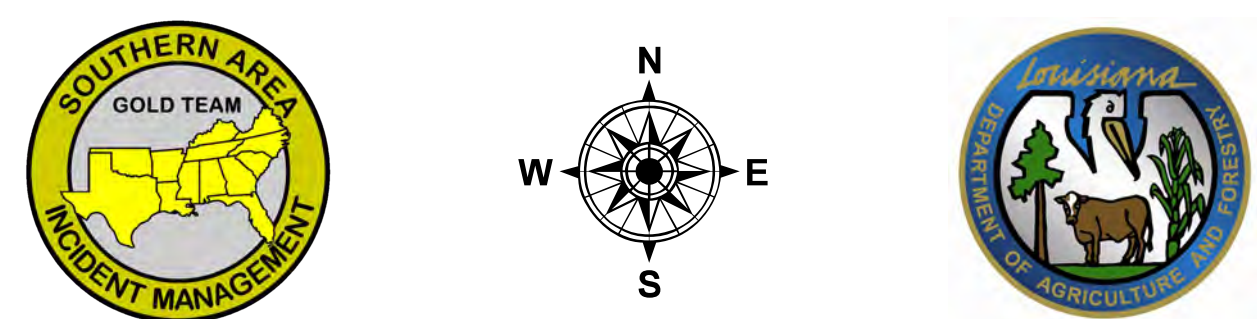
October 2, 2023 Day

Tiger Island
LA-LAS-000252
31,290 acres at 9/18/2023 @ 0730

Hwy 113
LA-LAS-000256
7,124 acres at 9/8/2023 @ 0900

Lions Camp Road
LA-LAS-000281
788 acres at 9/8/2023 @ 0900

Elizabeth
LA-LAS-000296
930 acres at 9/8/2023 @ 0900



1:100,000 | SA Gold Team GIS | 9/30/2023 1955
Acres from IR and GPS
WGS 1984 Datum. LatLong Grid

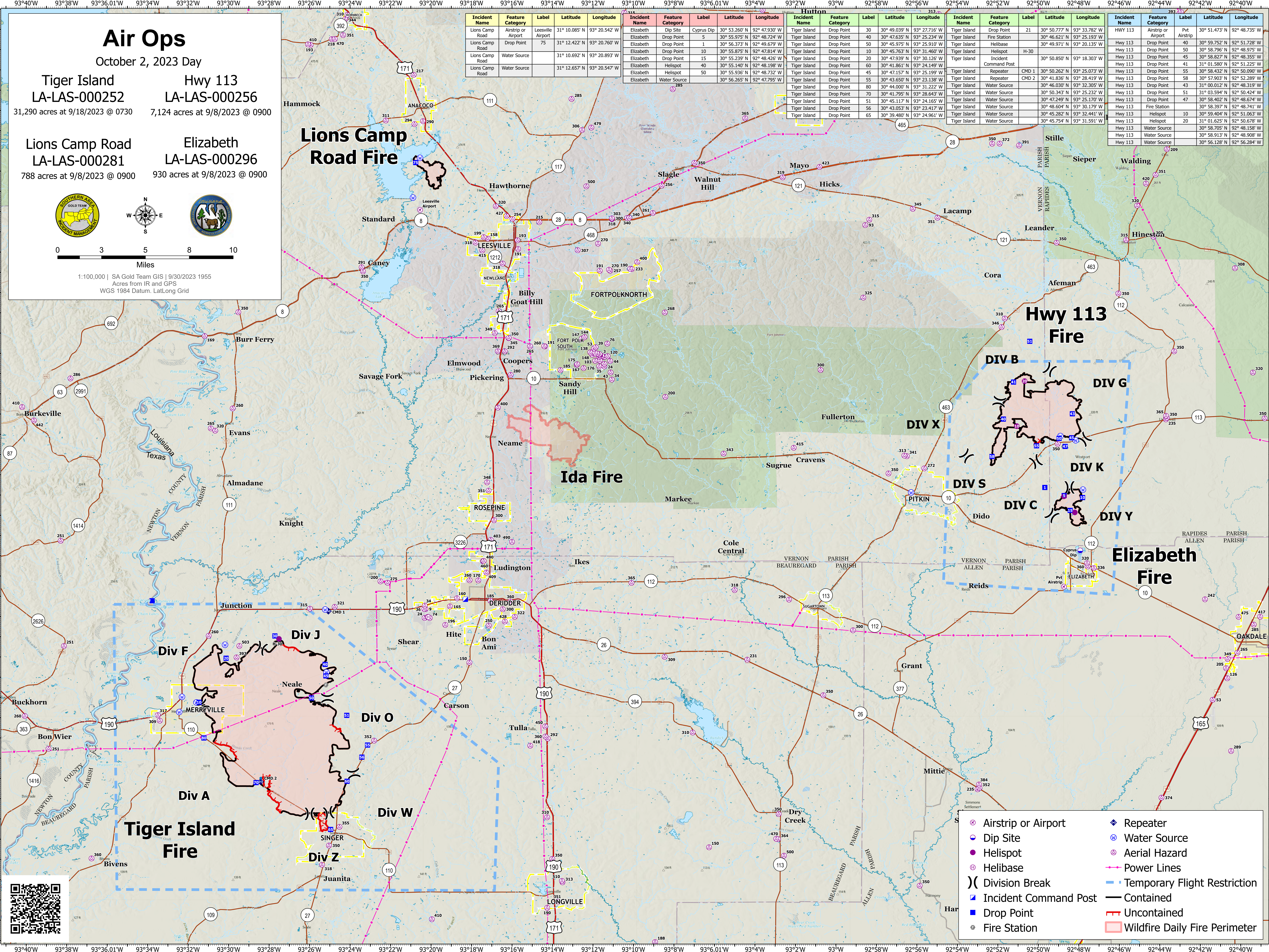
Incident Name	Feature Category	Label	Latitude	Longitude
Lions Camp Road	Airstrip or Airport	Leesville Airport	31° 10.085' N	93° 20.542' W
Lions Camp Road	Drop Point	75	31° 12.422' N	93° 20.760' W
Lions Camp Road	Water Source		31° 10.692' N	93° 20.893' W
Lions Camp Road	Water Source		31° 12.657' N	93° 20.547' W

Incident Name	Feature Category	Label	Latitude	Longitude
Elizabeth	Dip Site	Cyprus Dip	30° 53.260' N	92° 47.930' W
Elizabeth	Drop Point	5	30° 55.975' N	92° 48.724' W
Elizabeth	Drop Point	1	30° 56.373' N	92° 49.679' W
Elizabeth	Drop Point	10	30° 55.875' N	92° 47.814' W
Elizabeth	Drop Point	15	30° 55.239' N	92° 48.426' W
Elizabeth	Helispot	40	30° 55.140' N	92° 48.198' W
Elizabeth	Helispot	50	30° 55.936' N	92° 48.732' W
Elizabeth	Water Source		30° 56.265' N	92° 47.795' W

Incident Name	Feature Category	Label	Latitude	Longitude
Tiger Island	Drop Point	30	30° 49.039' N	93° 27.716' W
Tiger Island	Drop Point	40	30° 47.635' N	93° 25.234' W
Tiger Island	Drop Point	50	30° 45.975' N	93° 25.910' W
Tiger Island	Drop Point	10	30° 45.763' N	93° 31.460' W
Tiger Island	Drop Point	20	30° 47.939' N	93° 30.126' W
Tiger Island	Drop Point	60	30° 41.861' N	93° 24.149' W
Tiger Island	Drop Point	45	30° 47.157' N	93° 25.199' W
Tiger Island	Drop Point	55	30° 43.650' N	93° 23.122' W
Tiger Island	Drop Point	80	30° 44.000' N	93° 31.222' W
Tiger Island	Drop Point	70	30° 41.795' N	93° 28.643' W
Tiger Island	Drop Point	51	30° 45.117' N	93° 24.165' W
Tiger Island	Drop Point	56	30° 43.053' N	93° 23.417' W
Tiger Island	Drop Point	65	30° 39.480' N	93° 24.961' W

Incident Name	Feature Category	Label	Latitude	Longitude
Tiger Island	Drop Point	21	30° 50.777' N	93° 33.782' W
Tiger Island	Fire Station		30° 46.621' N	93° 25.193' W
Tiger Island	Helibase		30° 49.971' N	93° 20.135' W
Tiger Island	Helispot	H-30	30° 50.850' N	93° 18.303' W
Tiger Island	Incident Command Post		30° 50.262' N	93° 25.073' W
Tiger Island	Repeater	CMD 1	30° 41.836' N	93° 28.419' W
Tiger Island	Repeater	CMD 2	30° 46.030' N	93° 32.305' W
Tiger Island	Water Source		30° 50.343' N	93° 25.232' W
Tiger Island	Water Source		30° 47.249' N	93° 25.170' W
Tiger Island	Water Source		30° 48.604' N	93° 30.179' W
Tiger Island	Water Source		30° 45.282' N	93° 32.441' W
Tiger Island	Water Source		30° 45.754' N	93° 31.591' W

Incident Name	Feature Category	Label	Latitude	Longitude
Hwy 113	Airstrip or Airport	Pvt Airstrip	30° 51.473' N	92° 48.735' W
Hwy 113	Drop Point	40	30° 59.752' N	92° 51.728' W
Hwy 113	Drop Point	50	30° 58.796' N	92° 48.975' W
Hwy 113	Drop Point	45	30° 58.827' N	92° 48.355' W
Hwy 113	Drop Point	41	31° 01.580' N	92° 51.225' W
Hwy 113	Drop Point	55	30° 58.432' N	92° 50.090' W
Hwy 113	Drop Point	58	30° 57.903' N	92° 52.289' W
Hwy 113	Drop Point	43	31° 00.012' N	92° 48.319' W
Hwy 113	Drop Point	51	31° 03.594' N	92° 50.424' W
Hwy 113	Drop Point	47	30° 58.402' N	92° 48.674' W
Hwy 113	Fire Station		30° 59.404' N	92° 51.063' W
Hwy 113	Helispot	20	31° 01.625' N	92° 51.078' W
Hwy 113	Water Source		30° 58.705' N	92° 48.158' W
Hwy 113	Water Source		30° 58.913' N	92° 48.908' W
Hwy 113	Water Source		30° 56.128' N	92° 56.284' W



- Airstrip or Airport
- Dip Site
- Helispot
- Helibase
- Division Break
- Incident Command Post
- Drop Point
- Fire Station
- Repeater
- Water Source
- Aerial Hazard
- Power Lines
- Temporary Flight Restriction
- Contained
- Uncontained
- Wildfire Daily Fire Perimeter

