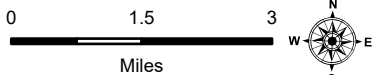


Pilot

Tiger Island
LA-LAS-000252

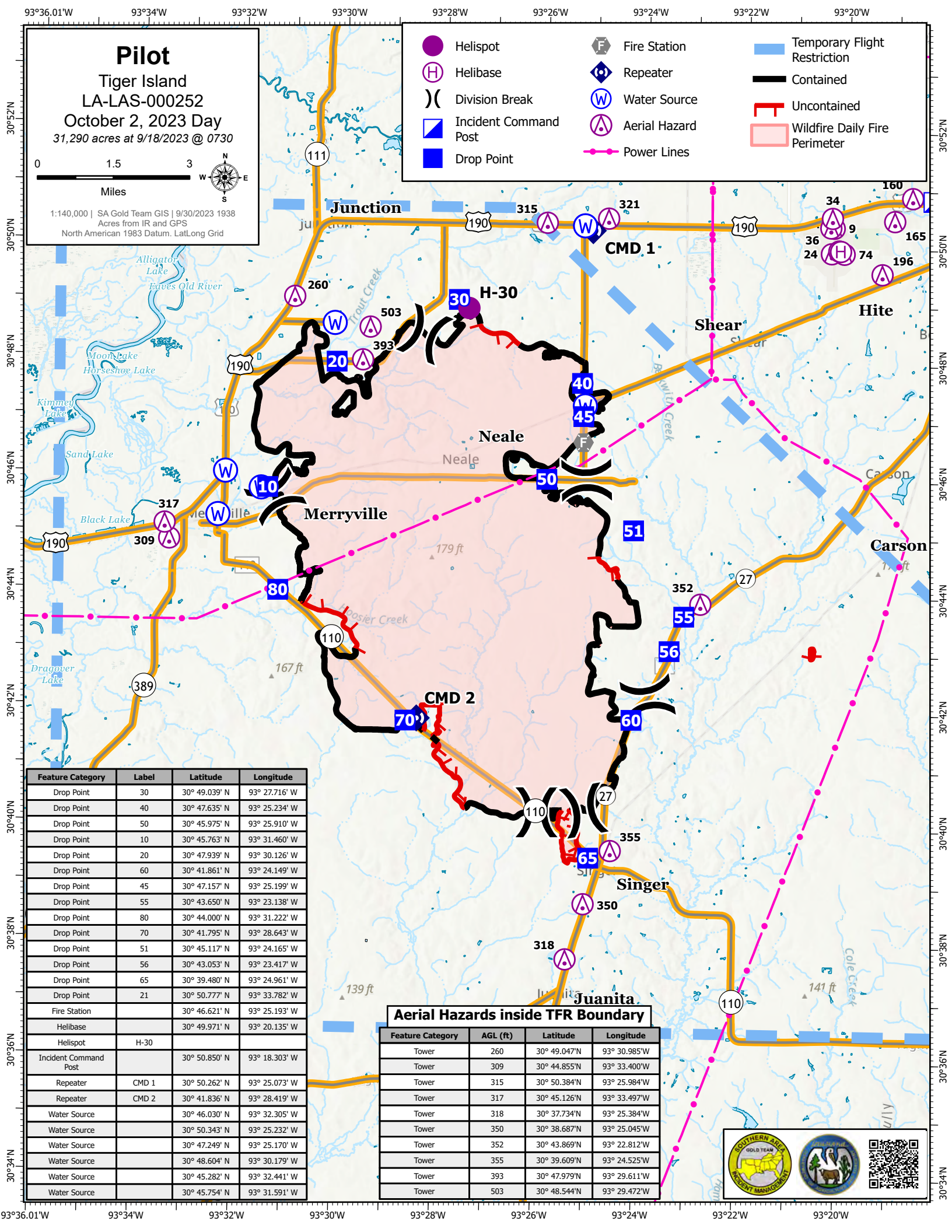
October 2, 2023 Day

31,290 acres at 9/18/2023 @ 0730



1:140,000 | SA Gold Team GIS | 9/30/2023 1938
Acres from IR and GPS
North American 1983 Datum, LatLong Grid

- Helispot
- Fire Station
- Temporary Flight Restriction
- Helibase
- Repeater
- Contained
- Division Break
- Water Source
- Uncontained
- Incident Command Post
- Aerial Hazard
- Power Lines
- Drop Point
- Wildfire Daily Fire Perimeter



| Feature Category | Label | Latitude | Longitude |
|-----------------------|-------|---------------|---------------|
| Drop Point | 30 | 30° 49.039' N | 93° 27.716' W |
| Drop Point | 40 | 30° 47.635' N | 93° 25.234' W |
| Drop Point | 50 | 30° 45.975' N | 93° 25.910' W |
| Drop Point | 10 | 30° 45.763' N | 93° 31.460' W |
| Drop Point | 20 | 30° 47.939' N | 93° 30.126' W |
| Drop Point | 60 | 30° 41.861' N | 93° 24.149' W |
| Drop Point | 45 | 30° 47.157' N | 93° 25.199' W |
| Drop Point | 55 | 30° 43.650' N | 93° 23.138' W |
| Drop Point | 80 | 30° 44.000' N | 93° 31.222' W |
| Drop Point | 70 | 30° 41.795' N | 93° 28.643' W |
| Drop Point | 51 | 30° 45.117' N | 93° 24.165' W |
| Drop Point | 56 | 30° 43.053' N | 93° 23.417' W |
| Drop Point | 65 | 30° 39.480' N | 93° 24.961' W |
| Drop Point | 21 | 30° 50.777' N | 93° 33.782' W |
| Fire Station | | 30° 46.621' N | 93° 25.193' W |
| Helibase | | 30° 49.971' N | 93° 20.135' W |
| Helispot | H-30 | | |
| Incident Command Post | | 30° 50.850' N | 93° 18.303' W |
| Repeater | CMD 1 | 30° 50.262' N | 93° 25.073' W |
| Repeater | CMD 2 | 30° 41.836' N | 93° 28.419' W |
| Water Source | | 30° 46.030' N | 93° 32.305' W |
| Water Source | | 30° 50.343' N | 93° 25.232' W |
| Water Source | | 30° 47.249' N | 93° 25.170' W |
| Water Source | | 30° 48.604' N | 93° 30.179' W |
| Water Source | | 30° 45.282' N | 93° 32.441' W |
| Water Source | | 30° 45.754' N | 93° 31.591' W |

| Aerial Hazards inside TFR Boundary | | | |
|------------------------------------|----------|---------------|---------------|
| Feature Category | AGL (ft) | Latitude | Longitude |
| Tower | 260 | 30° 49.047' N | 93° 30.985' W |
| Tower | 309 | 30° 44.855' N | 93° 33.400' W |
| Tower | 315 | 30° 50.384' N | 93° 25.984' W |
| Tower | 317 | 30° 45.126' N | 93° 33.497' W |
| Tower | 318 | 30° 37.734' N | 93° 25.384' W |
| Tower | 350 | 30° 38.687' N | 93° 25.045' W |
| Tower | 352 | 30° 43.869' N | 93° 22.812' W |
| Tower | 355 | 30° 39.609' N | 93° 24.525' W |
| Tower | 393 | 30° 47.979' N | 93° 29.611' W |
| Tower | 503 | 30° 48.544' N | 93° 29.472' W |

