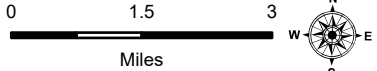


# Pilot

Tiger Island  
LA-LAS-000252

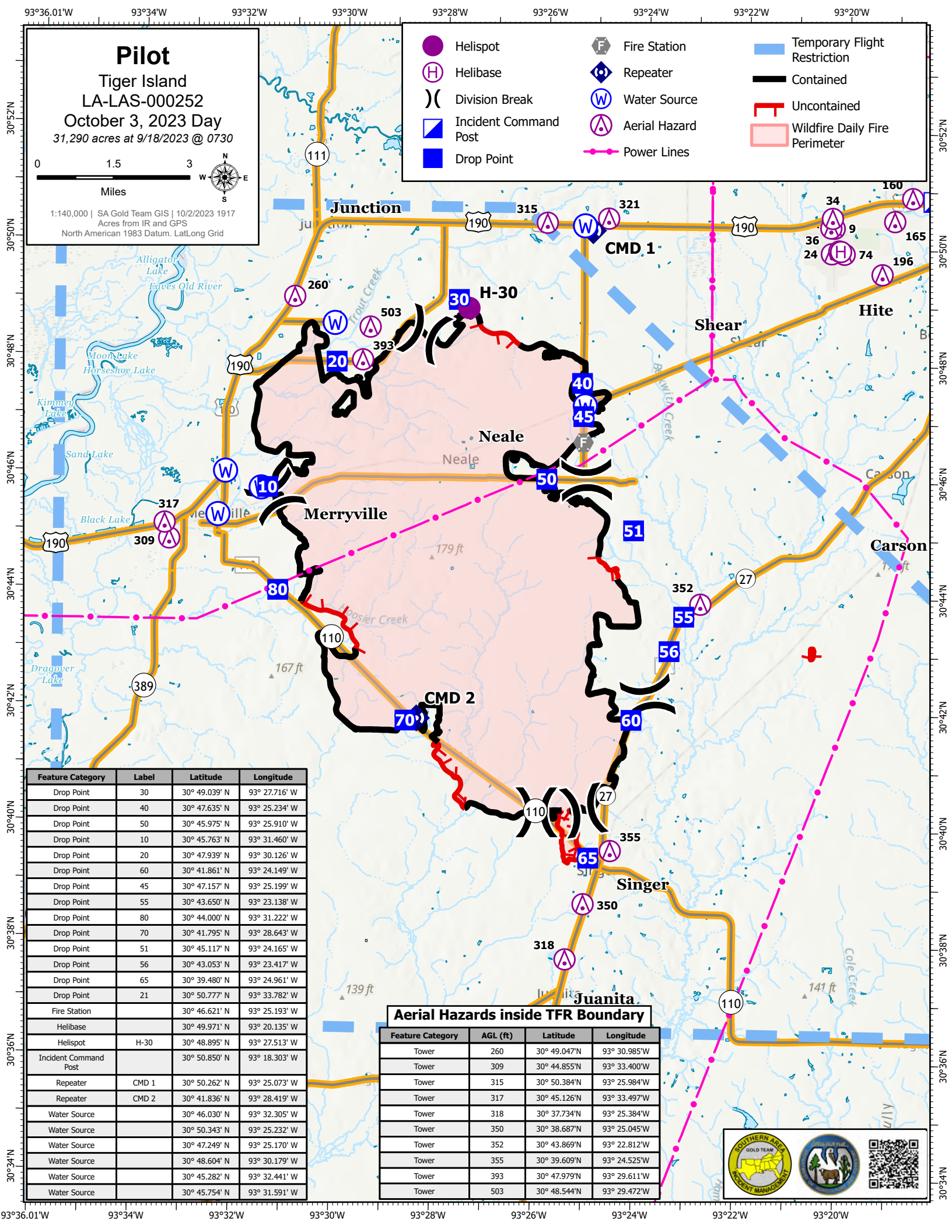
October 3, 2023 Day

31,290 acres at 9/18/2023 @ 0730



1:140,000 | SA Gold Team GIS | 10/2/2023 1917  
Acres from IR and GPS  
North American 1983 Datum, LatLong Grid

Helispot	Fire Station	Temporary Flight Restriction
Helibase	Repeater	Contained
Division Break	Water Source	Uncontained
Incident Command Post	Aerial Hazard	Wildfire Daily Fire Perimeter
Drop Point	Power Lines	



Feature Category	Label	Latitude	Longitude
Drop Point	30	30° 49.039' N	93° 27.716' W
Drop Point	40	30° 47.635' N	93° 25.234' W
Drop Point	50	30° 45.975' N	93° 25.910' W
Drop Point	10	30° 45.763' N	93° 31.460' W
Drop Point	20	30° 47.939' N	93° 30.126' W
Drop Point	60	30° 41.861' N	93° 24.149' W
Drop Point	45	30° 47.157' N	93° 25.199' W
Drop Point	55	30° 43.650' N	93° 23.138' W
Drop Point	80	30° 44.000' N	93° 31.222' W
Drop Point	70	30° 41.795' N	93° 28.643' W
Drop Point	51	30° 45.117' N	93° 24.165' W
Drop Point	56	30° 43.053' N	93° 23.417' W
Drop Point	65	30° 39.480' N	93° 24.961' W
Drop Point	21	30° 50.777' N	93° 33.782' W
Fire Station		30° 46.621' N	93° 25.193' W
Helibase		30° 49.971' N	93° 20.135' W
Helispot	H-30	30° 48.895' N	93° 27.513' W
Incident Command Post		30° 50.850' N	93° 18.303' W
Repeater	CMD 1	30° 50.262' N	93° 25.073' W
Repeater	CMD 2	30° 41.836' N	93° 28.419' W
Water Source		30° 46.030' N	93° 32.305' W
Water Source		30° 50.343' N	93° 25.232' W
Water Source		30° 47.249' N	93° 25.170' W
Water Source		30° 48.604' N	93° 30.179' W
Water Source		30° 45.282' N	93° 32.441' W
Water Source		30° 45.754' N	93° 31.591' W

### Aerial Hazards inside TFR Boundary

Feature Category	AGL (ft)	Latitude	Longitude
Tower	260	30° 49.047' N	93° 30.985' W
Tower	309	30° 44.855' N	93° 33.400' W
Tower	315	30° 50.384' N	93° 25.984' W
Tower	317	30° 45.126' N	93° 33.497' W
Tower	318	30° 37.734' N	93° 25.384' W
Tower	350	30° 38.687' N	93° 25.045' W
Tower	352	30° 43.869' N	93° 22.812' W
Tower	355	30° 39.609' N	93° 24.525' W
Tower	393	30° 47.979' N	93° 29.611' W
Tower	503	30° 48.544' N	93° 29.472' W