

Tiger Island Fire

LA-LAS-000252

Deridder, LA

IAP

Sunday August 27, 2023



2023.tigerisland@firenet.gov

Finance: 2023.tigerisland.finance@firenet.gov

Plans: 2023.tigerisland.plans@firenet.gov

Demob: 2023.tigerisland.demob@firenet.gov

Help us tell the story of the Tiger Island Fire!!


Send your Tiger Island Fire photos to 2023.tigerisland@firenet.gov

Tiger Island Inciweb: <https://inciweb.nwcg.gov/incident-information/lalas-tiger-island-fire>

ORGANIZATION ASSIGNMENT LIST (ICS 203)

1. Incident Name:		2. Operational Period: Date From: _____ Date To: _____ Time From: _____ Time To: _____	
3. Incident Commander(s) and Command Staff:		7. Operations Section:	
IC/UCs		Chief	
		Deputy	
Deputy		Staging Area	
Safety Officer		Branch	
Public Info. Officer		Branch Director	
Liaison Officer		Deputy	
4. Agency/Organization Representatives:		Division/Group	
Agency/Organization	Name	Division/Group	
		Division/Group	
		Division/Group	
		Division/Group	
		Branch	
		Branch Director	
		Deputy	
5. Planning Section:		Division/Group	
Chief		Division/Group	
Deputy		Division/Group	
Resources Unit		Division/Group	
Situation Unit		Division/Group	
Documentation Unit		Branch	
Demobilization Unit		Branch Director	
Technical Specialists		Deputy	
		Division/Group	
		Division/Group	
		Division/Group	
6. Logistics Section:		Division/Group	
Chief		Division/Group	
Deputy		Air Operations Branch	
Support Branch		Air Ops Branch Dir.	
Director			
Supply Unit			
Facilities Unit		8. Finance/Administration Section:	
Ground Support Unit		Chief	
Service Branch		Deputy	
Director		Time Unit	
Communications Unit		Procurement Unit	
Medical Unit		Comp/Claims Unit	
Food Unit		Cost Unit	
9. Prepared by: Name: _____ Position/Title: _____ Signature: _____			
ICS 203	IAP Page ____	Date/Time: _____	

FIRE BEHAVIOR FORECAST

FORECAST NUMBER: 02	TYPE OF FIRE: Wildland, Type 1
FIRE NAME: Tiger Island	OPERATIONAL PERIOD: Day Shift
DATE ISSUED: Saturday, August 26, 2023 Time Issued: 1630	SHIFT DATE: Sunday, August 27, 2023
UNIT: Private Lands	SIGNED: Greg Titus, FBAN 

WEATHER SUMMARY:

Local Thresholds – Watch Outs
Temp >80°, Min RH < 35%, Winds > 20 mph
KBDI >400, BI >19

Forecast for Today
Temp: 104°, Min RH: 28%, Winds: 8 mph Gust 13 mph
KBDI: 789, BI: 27

FIRE BEHAVIOR:

Fuels are critically dry. **KBDI and ERC values are at record levels.** Fuel conditions combined with low relative humidity values and gusty winds, especially during the afternoon, have the potential to produce extreme fire behavior. Fires may exhibit erratic and explosive growth behavior. Be alert for thunderstorms in the fire area causing strong erratic winds.

Predicted Fuel Conditions at Vernon RAWS – 20 miles NE of the fire area.

Fine Dead Fuel Moisture = 5%, 1,000 Hour Fuel Moisture = 15.1%, KBDI = 786, ERC = 35 ↑ 1

Fire Behavior based on values for the fuel models shown.

Vegetation	Fuel Model	Max Rate of Spread	Flame Length
Grass/Shrub	GS3	53 ch/hr	10 feet
Southern Rough	7	46 ch/hr	7 ½ feet

Expect spotting distances of **0.2 miles**, this distance could be further if wind gusts exceed 15 mph.

Probability of Ignition = **68%**

In **15 minutes** a new spot fire or ignition could reach **5 acres**.

Specific Areas of Concern:

Westerly winds will make the eastern edge of the fire of concern today, the area around Graybow Rd and Neale Oilfield.

The potential for thunderstorm development in the afternoon, bringing gusty and erratic winds. This could cause uncontained areas of the fire to become extremely active. These winds could rekindle fire in areas that have been dormant.

AIR OPERATIONS:

Generally good conditions for air operations, no visibility issues, unless the fire makes a run a produces a large amount of smoke.

Fire Behavior Safety Message

Thunderstorms in the vicinity of a fire have the potential to produce outflow gust fronts or downbursts. Any evidence of precipitation means the storm has developed to the point where it can produce these types of winds, as well as lightning. Rain at the ground or virga is a potential warning sign. Outflow gust fronts are winds radiating outward but primarily in the direction of storm motion, from the base of the convection. They are present in all well-developed convection and last tens of minutes to an hour or more. Downbursts are much less common, shorter lived, and affect a much smaller area. Either type of wind has the potential to abruptly change the speed and direction of fire spread. Outflow gust fronts and downbursts have both been cited as a causal agent in **multiple firefighter fatalities**.

AIR OPERATIONS SUMMARY 220		Prepared By: Darlene Hall	Prepared: 8/26/23	Prepared Time: 1730
1. INCIDENT NAME: Tiger Island Fire		2. OPERATIONAL PERIOD 8/27/23		START TIME: 0700
		END TIME: 2100		SUNRISE: 06:46
				SUNSET: 2:12

3. REMARKS AVIATION SAFETY IS A TEAM EFFORT ALL MISSIONS WILL BE ANALYZED IN TERMS OF HAZARDS AND RISKS • THE RISK ASSESSMENT IS AN OPEN PROCESS WELCOMING INPUT. • Ensure Areal hazards are communicated and known! • Utilize bucket support as needed		4. READY ALERT AIRCRAFT: IA: TBD Medivac: See Medical Plan in the IAP	5. TFR: 3/1554 / 122.925 Lat: 30° 41' 40" N Long: 93° 27' 00" W (9 Nautical miles 6000MSL)
--	--	---	--

6. PERSONNEL	NAME	PHONE #	7. FREQUENCIES	AM	FM	8A. FIXED-WING Ordering through Dispatch
AOBD	Darlene Hall	530-228-6004 Darlene_hall@firenet.gov			RX154.19 T-136.5 TX159.42 T-136.5	AA - 1BR borrowed 2 Scoopers / 2 LATs / 1 ASM available from TICC
ASGS			A/A (primary)	134.975		8B. 6 Air National Guard helicopters
HEBM			A/G		RX 151.2650 TX 151.2650 Tone 110.0	REMARKS : For Guard helicopters order through Coordinator on site Guard Helicopters have NO A/G contact <u>Directed by AA or ASIM</u>
HLCO						
DECK						
RADOS						

9. HELICOPTERS: (Order through Operations)

FAA N#	TY	MAKE/MODEL	BASE	START	On Base	REMARKS	FAA N#	TY	MAKE/MODEL	BASE	START	On Base	REMARKS

10. TASK/ MISSION/ ASSIGNMENT (Type/ function includes: Air Tactical, Retardant, Recon, Personnel Transport, Bucket Operations, SAR, etc.)			
TYPE/FUNCTION	PRIORITY	NAME OF PERSONNEL OR CARGO (If applicable) or instructions for tactical aircraft	
Water Drops		Guard Helicopter	
		MISSION START	FLY FROM
		0800	Fire
			FLY TO
			Fire

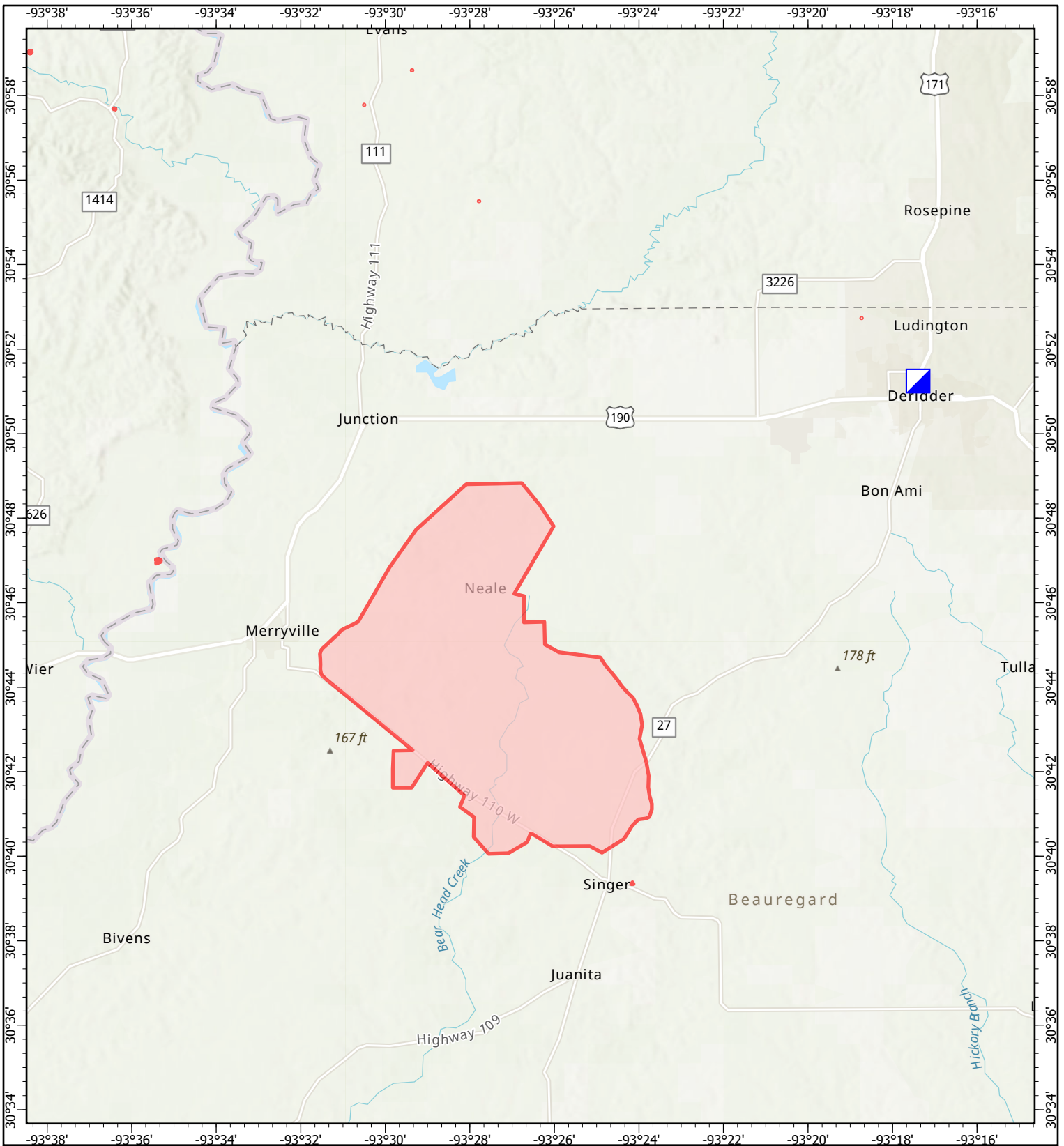
Controlled Unclassified Information/Basic

ICS 205

INCIDENT RADIO COMMUNICATIONS PLAN		Incident Name TIGER ISLAND FIRE				Date/Time Prepared: AUGUST 26, 2023 2200 HRS		Operational Period Date/Time From: 8/27/23 0700 HRS To: 08/28/23 0700 HRS	
Ch #	Function	Channel Name/Trunked Radio System, Talkgroup	Assignment	RX Freq N or W	RX Tone/NAC	TX Freq N or W	TX Tone/NAC	Mode	Remarks
1	TAC	TAC A		159.43500	114.8	159.43500	114.8	N	
2	TAC	TAC B		151.47500	114.8	151.47500	114.8	N	
3	TAC	TAC C		159.31500	114.8	159.31500	114.8	N	
4	TAC	VFIRE 21		154.28000	156.7	154.28000	156.7	N	
5	TAC	VFIRE 22		154.26500	156.7	154.26500	156.7	N	
6	TAC	VFIRE 23		154.29500	156.7	154.29500	156.7	N	
7	TAC	D4 WEST TALK	ALL DIVS	151.37000	110.9	131.37000	110.9	N	
8	TAC	WEST FIRE 1	ALL DIVS	151.40000	110.9	151.40000	110.9	N	
9									
10									
11									
12									
13	LA AIR TO GROUND	EAST FIRE 1	ALL	151.265000	100.0	151.265000	100.0	N	
14	AIR TO GROUND	AIRGROUND 1	A/G PRIMARY	159.30000	114.8	159.30000	114.8	N	
15	AIR TO GROUND	AIRGROUND 2	A/G SECONDARY	151.38500	114.8	151.38500	114.8	N	
16	AIR GUARD	AIRGUARD	ALL	168.6250 N	110.9	168.6250 N	110.9	A	Air Guard
5. Prepared by (Communications Unit) BARRY STEARNS COML		Incident Location: TIGER ICP County/State LA				Latitude / Longitude: ° / °			

The convention calls for frequency lists to show four digits after the decimal place, followed by either an "N" or a "W", depending on whether the frequency is narrow or wide band. Mode refers to either "A" or "D" indicating analog or digital (Project 25).

***** Special Instructions: Use Human Repeater When Necessary. ALL Medical calls use Command "x" (Channel "x") to ----- Communications to initiate IWI. Divide Communications Cell - (406) 438-1685**



IAP Map



Tiger Island
 LA-LAS-000252
 August 27

31387 acres at August 25, 2023



1:231,339 | SA Red Team | 8/26/2023 1852
 Acres from IR and GPS
 WGS 1984 Datum. LatLong Grid



-  Incident Command Post
-  Wildfire Daily Fire Perimeter

HEALTH AND SAFETY MESSAGE

“We don’t plan on luck to be safe; we plan on sound risk management and good decisions” the Red Team

INCIDENT: **Tiger Island Fire**

DATE: **August 27 2023**

TIME: **0700-2100**

Major Hazards and Risks:

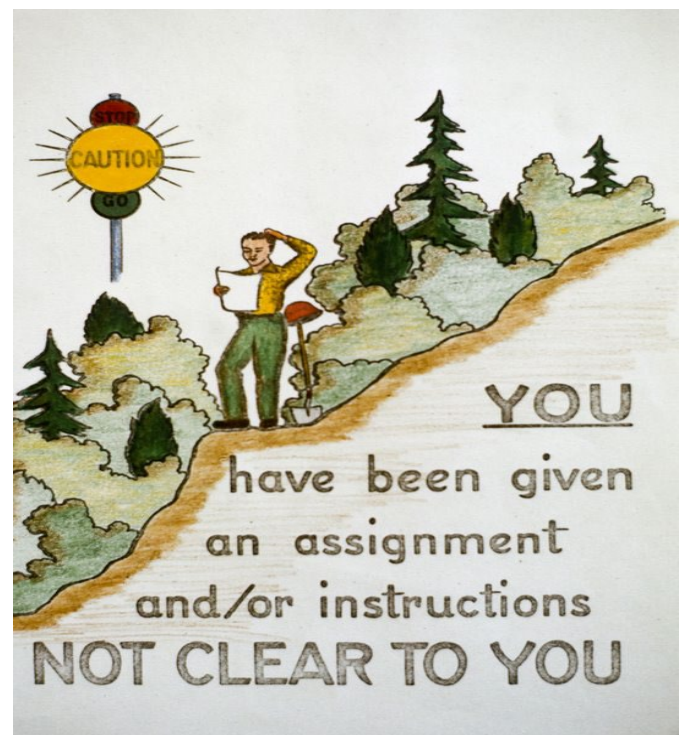
Transition
Driving/dusty roads
WUI
Extreme Fire Behavior
Heat Illness

Narrative: Transition: A new IMT assumed command of the incident today and will be in the field coordinating with incident resources. It’s important to focus on the current action plan and not be distracted by the transition process. Maintain situational awareness and check each other for signs of cumulative fatigue. **Driving:** as on all incidents is a critical safety issue. Road conditions are variable in and around the incident due to very dry conditions and heavy use. Drive with Headlights on! On dirt roads drive slowly (<35 mph) due to dust. Maintain prudent following distance. Use good defensive driving techniques, be cautious and have patience with distracted drivers. **WUI:** The fire is impacting structures and nearby communities. Be careful when working around structures and be heads-up for hazardous materials (review pg. 11, IRPG). **Extreme Fire Behavior:** The area has been under extreme weather and temperatures have been consistently above 100 degrees for several weeks. Erratic winds have worsened the situation. Base all planned actions on current and predicted weather and 10 Standard Orders/18 Watch Out Situations.

Standard Firefighting Orders

1. Keep informed on fire weather conditions and forecasts.
2. Know what your fire is doing at all times.
3. Base all actions on current and expected behavior of the fire.
4. Identify escape routes and safety zones and make them known.
5. Post lookouts when there is possible danger.
6. Be alert. Keep calm. Think clearly. Act decisively.
7. Maintain prompt communications with your forces, your supervisor, and adjoining forces.
8. Give clear instructions and insure they are understood.
9. Maintain control of your forces at all times.
10. Fight fire aggressively, having provided for safety first.

WATCH OUT SITUATION



Red Team Safety Officers: Joe Castro, Tommy Hawkins, Brad Lidell, Jason Rose

MEDICAL PLAN (ICS 206 WF)

Controlled Unclassified Information//Basic

1. Incident/Project Name				2. Operational Period							
Tiger Island				08/27/23-08/28-2023							
2. Medical Aid Stations											
Medical Aid Stations		Location			Advanced Life Support (ALS)						
					Yes No						
3. Ambulance Services											
Name		Location		Phone		Advanced Life Support (ALS)					
						Yes No					
C-101		1287 Newlin Cemetery Road, Singer, LA		(337) 660-5990		X					
C-102		100 N. Fifth St., Leesville, LA		(337) 660-5990		X					
Local EMS		<i>For emergencies outside of incident</i>		911		X					
4. Air Ambulance Services											
Name		Location, Capabilities				Advanced Life Support (ALS)					
						Yes No					
Coast Guard New Orleans Sector (504) 589-6225		2-2.5 hrs response time Hoist, Night Vision, BLS Houston or New Orleans				X					
Acadian Air Med (337) 291-1594		Woodworth, LA Lat/Long 31° 05.820', -92° 17.694'				X					
Acadian Air Med (337) 291-1594		Lake Charles Regional Airport Lat/Long 30° 04.404', -93° 08.502'				X					
5. Hospitals											
Name/Address		GPS Datum – WGS 84 Coordinate Standard		Travel Time Air Gnd		Phone		Helipad Yes No		Level of Care Facility	
Ochsner LSU Health Shreveport 1541 Kings Highway Shreveport, LA 71103		Lat: 32° 29.724',		40 min	113 min	(318) 626-0000	X			L1 Trauma, STEMI, Stroke, Burn Center	
		Long: -93° 45.000'									
Byrd Regional Hospital 1020 Fertitta Blvd. Leesville, LA 71446		Lat: 35° 54.303'		20 min	40 min	(337) 239-9041	X			Stroke Center	
		Long: -79° 3.041'									
Rapides Regional Medical 211 4th St Alexandria, LA 71301		Lat: 34° 43.566'		30 min	105 min	(318) 769-3000	X			L2 Trauma, STEMI	
		Long: -76° 45.307'									
University Medical Center 2000 Canal St. New Orleans, LA 70112		Lat: 29° 57.561'		100 min	4 hrs	(504) 702-3000	X			L1 Trauma, STEMI, Stroke, Burn Center	
		Long: -90° 4.964'									
		VHF:									
6. Clinics											
Outpatient Medical Center		908 S 10th St Suite B, Leesville, LA (337) 238-1274 (0800-1800 Mon, Tue, Thu; 0800-1700 Wed; 0800-1300 Fri)									
QTC Medical Group		802 S 10th St C, Leesville, LA (337) 238-4189 (0800-1700 Mon-Fri)									

8. Prepared By (Medical Unit Leader)		9. Date/Time		10. Reviewed by (Safety Officer)	
Fred Adler, MEDL (479) 238-6064 Nick Arnett, MEDL (408) 888-1900		8/26/2023		, SOFC	

IWI IC Responsibilities

- Take charge of the scene – inform the Division Supervisor and call ambulance number above, establish radio communications (frequencies, channels). Identify the emergency name – Division A medical, etc.
- Assign or begin patient assessment (Medical Incident Report - MIR) and first aid. Request additional medical resources on division/branch or across incident. Transmit MIR patient information to Communications.
- Determine patient transportation through consultation with line medical personnel and Medical Unit Leader. Consider transportation time, risk to personnel, destination facility and available operational resources. If air transport is chosen, implement the plan for alternative transportation in the event aircraft cannot complete the mission. Order transportation resources through Communications as early as possible.
- Notify Communications as resources arrive and any patient status changes. Names of injured or deceased individuals will not be transmitted on the radio.
- Initiate documentation for future investigation; if a line safety officer is available, assign them to lead documentation. Do not move deceased individuals, gear or personal effects except to accomplish rescue work or protect the safety of others. Obtain written documentation of witnesses. The Unit Log, ICS 214, may be used for the initial documentation, but a subsequent narrative will be required.
- As appropriate, conduct an After Action Review to determine successes, areas to improve and lessons learned.

MEDICAL PLAN (ICS 206 WF)

Controlled Unclassified Information//Basic

Medical Incident Report

FOR A NON-EMERGENCY INCIDENT, WORK THROUGH CHAIN OF COMMAND TO REPORT AND TRANSPORT INJURED PERSONNEL AS NECESSARY.

FOR A MEDICAL EMERGENCY: IDENTIFY ON SCENE INCIDENT COMMANDER BY NAME AND POSITION AND ANNOUNCE "MEDICAL EMERGENCY" TO INITIATE RESPONSE FROM IMT COMMUNICATIONS/DISPATCH.

Use the following items to communicate situation to communications/dispatch.

1. CONTACT COMMUNICATIONS / DISPATCH (Verify correct frequency prior to starting report)

Ex: "Communications, Div. Alpha. Stand-by for Emergency Traffic."

2. INCIDENT STATUS: Provide incident summary (including number of patients) and command structure.

Ex: "Communications, I have a Red priority patient, unconscious, struck by a falling tree. Requesting air ambulance to Forest Road 1 at (Lat./Long.) This will be the Trout Meadow Medical, IC is TFLD Jones. EMT Smith is providing medical care."

Severity of Emergency / Transport Priority	<input type="checkbox"/> RED / PRIORITY 1 Life or limb threatening injury or illness. Evacuation need is IMMEDIATE <i>Ex: Unconscious, difficulty breathing, bleeding severely, 2° – 3° burns more than 4 palm sizes, heat stroke, disoriented.</i> <input type="checkbox"/> YELLOW / PRIORITY 2 Serious Injury or illness. Evacuation may be DELAYED if necessary. <i>Ex: Significant trauma, unable to walk, 2° – 3° burns not more than 1-3 palm sizes.</i> <input type="checkbox"/> GREEN / PRIORITY 3 Minor Injury or illness. Non-Emergency transport <i>Ex: Sprains, strains, minor heat-related illness.</i>	
Nature of Injury or Illness & Mechanism of Injury		<i>Brief Summary of Injury or Illness (Ex: Unconscious, Struck by Falling Tree)</i>
Transport Request		<i>Air Ambulance / Short Haul/Hoist Ground Ambulance / Other</i>
Patient Location		<i>Descriptive Location & Lat. / Long. (WGS84)</i>
Incident Name		<i>Geographic Name + "Medical" (Ex: Trout Meadow Medical)</i>
On-Scene Incident Commander		<i>Name of on-scene IC of Incident within an Incident (Ex: TFLD Jones)</i>
Patient Care		<i>Name of Care Provider (Ex: EMT Smith)</i>

3. INITIAL PATIENT ASSESSMENT: Complete this section for each patient as applicable (start with the most severe patient)

Patient Assessment: See IRPG page 106

Treatment:

4. TRANSPORT PLAN:

Evacuation Location (if different): (Descriptive Location (drop point, intersection, etc.) or Lat. / Long.) Patient's ETA to Evacuation Location:

Helispot / Extraction Site Size and Hazards:

5. ADDITIONAL RESOURCES / EQUIPMENT NEEDS:

Example: Paramedic/EMT, Crews, Immobilization Devices, AED, Oxygen, Trauma Bag, IV/Fluid(s), Splints, Rope rescue, Wheeled litter, HAZMAT, Extrication

6. COMMUNICATIONS: Identify State Air/Ground EMS Frequencies and Hospital Contacts as applicable

Function	Channel Name/Number	Receive (RX)	Tone/NAC *	Transmit (TX)	Tone/NAC *
COMMAND					
AIR-TO-GRND					
TACTICAL					

7. CONTINGENCY: Considerations: If primary options fail, what actions can be implemented in conjunction with primary evacuation method? Be thinking ahead.

8. ADDITIONAL INFORMATION: Updates/Changes, etc.

REMEMBER: Confirm ETA's of resources ordered. Act according to your level of training. Be Alert. Keep Calm. Think Clearly. Act Decisively.