

# Tiger Island Fire

LA-LAS-000252

IAP

August 28, 2023 – Day Shift

August 28-29, 2023 – Night Shift



Link to Tiger Island Maps

Finance: [2023.tigerisland.finance@firenet.gov](mailto:2023.tigerisland.finance@firenet.gov)

Plans: [2023.tigerisland.plans@firenet.gov](mailto:2023.tigerisland.plans@firenet.gov)

Demob: [2023.tigerisland.demob@firenet.gov](mailto:2023.tigerisland.demob@firenet.gov)

Help us tell the story of the Tiger Island Fire!!

Send your Tiger Island Fire photos to [2023.tigerisland@firenet.gov](mailto:2023.tigerisland@firenet.gov)

Tiger Island Inciweb: <https://inciweb.nwcg.gov/incident-information/lalas-tiger-island-fire>

## INCIDENT OBJECTIVES (ICS 202)

<b>1. Incident Name:</b>	<b>2. Operational Period: DAY</b>	
TIGER ISLAND	Date/Time From: 08/28/2023 0700      MON	Date/Time To: 08/29/2023 0700      TUE
<b>3. Objective(s):</b>		
<p>1. All operations will be conducted with safety of the public and firefighters in mind. Protection of life and property is your highest priority task. When in doubt, sacrifice acres rather than firefighter and public safety.</p> <p>2. Provide public information regarding fire danger to maintain good awareness of the risk and hazards to the public. Coordinate with LDAF Public Information Officer at (225) 975-7532 or <a href="mailto:presssecretary@ldaf.la.gov">presssecretary@ldaf.la.gov</a> and State Fire Marshall's Public Affairs Director at (225) 620-5115 or <a href="mailto:ashley.rodrigue@la.gov">ashley.rodrigue@la.gov</a>.</p> <p>3. Manage the human resources assigned to fire incident in a manner that promotes mutual respect and is consistent with interagency human resource objectives. The team will handle EEO complaints in consultation with LDAF Human Resources involving personnel attached to the team.</p> <p>4. Continue partnership and coordination with the appropriate LDAF, State Fire Marshall, GOHSEP, and local public safety officials.</p> <p>5. Manage incident in a cost effective manner.</p>		
<b>4. Operational Period Command Emphasis:</b>		
<p>Stop, Think, Discuss then Act, and ensure LCES is in place prior to engaging the fire. The Tiger Island Fire receives a strategic, risk-based response, commensurate with the threats and opportunities, and uses the full spectrum of management actions, that consider fire and fuel conditions, weather, values at risk, and resources available.</p>		
<b>General Situational Awareness:</b>		
<p>Watch Out Situations:          Extreme heat, dry fuels and fire behavior.          Aviation use and possible long medivac times.          Cumulative fatigue.</p>		
<b>5. Site Safety Plan Required?</b> Yes <input type="checkbox"/> No <input checked="" type="checkbox"/>		
<b>Approved Site Safety Plan(s) Located</b>		
<b>6. Incident Action Plan</b> (the items checked below are included in this Incident Action Plan):		
<input type="checkbox"/> ICS 202 <input type="checkbox"/> ICS 203 <input type="checkbox"/> ICS 204 <input type="checkbox"/> ICS 205 <input type="checkbox"/> ICS 205A <input type="checkbox"/> ICS 206	<input type="checkbox"/> ICS 207 <input type="checkbox"/> ICS 208 <input type="checkbox"/> ICS 220 <input type="checkbox"/> Map/Chart <input type="checkbox"/> Weather Forecast/Tides/Currents	<b>Other Attachments:</b> <input type="checkbox"/> _____ <input type="checkbox"/> _____ <input type="checkbox"/> _____ <input type="checkbox"/> _____
<b>7. Prepared by:</b> KELLY RUSSELL	<b>Position/Title:</b> PSCC	<b>Signature:</b>
<b>8. Approved by Incident Commander:</b>	<b>Name:</b> STEVE PARRISH	<b>Signature:</b>
<b>ICS 202</b>	<b>IAP Page</b>	<b>Date/Time:</b>

## ORGANIZATION ASSIGNMENT LIST (ICS 203)

<b>1. Incident Name:</b>		<b>2. Operational Period: DAY</b>	
TIGER ISLAND		Date/Time From: 08/28/2023 0700 MON	Date/Time To: 08/29/2023 0700 TUE
<b>3. Incident Commander(s) and Command Staff:</b>		MEDICAL UNIT	NICK ARNETT, FRED ADLER
IC/UC	STEVE PARRISH	FOOD UNIT	DAVID MALONE
DEPUTY	PAT PEARSON	<b>7. Operations Section:</b>	
IC/UC	JAY MICKEY (T)	DAY OPS SECTION CHIEF	SHANE STURGILL
SAFETY OFFICER	B.LIDELL, T.HAWKINS, J.CASTRO, J.ROSE	NIGHT OPS SECTION CHIEF	MARK JAMIESON
INFORMATION OFFICER	B.STRAWSER, S.HELSE, G.KNIGHT, A.WI	PLANNING OPS	T.FLOYD, V.EDGE
<b>4. Agency/Organization Representative(s):</b>		FIELD OPS	P.MYERS, J.KOLAKS (T)
<b>Agency/Organization</b>	<b>Name</b>		
LDAF	WADE DUBEA STATE FORESTER	DIVISION/GROUP	A/W UNSTAFFED
LDAF	MATT POLK CHIEF, MARK DAVIS	DIVISION/GROUP	F DAVID ZUARES
SE COMPACT	DARYL JONES	DIVISION/GROUP	J DAVID WALKER, JOSH HARIRD (T)
NATIONAL GUARD	COL SCOTT SLAVEN	DIVISION/GROUP	O LISA LONCAR
GOHSEP	TODD SMITH, AMY MICHAELS	DIVISION/GROUP	STRUCTURE GROUP CRAIG ROBERTSON
FIRE MARSHALL	R.SHOULTZ, C.ROBERSON	DIVISION/GROUP	LDAF DOZER GROUP TBA
<b>5. Planning Section:</b>		DIVISION/GROUP	NIGHT UNSTAFFED
CHIEF	K,RUSSELL, M.OLSON	<b>7b. Air Operations Branch:</b>	
RESOURCES UNIT	RICH AUBUCHON	AIR OPS BRANCH DIRECTOR	DARLENE HALL
SITUATION UNIT	ERIC SCHMECKPEPPER	AIR SUPPORT SUPERVISOR	CLINT DAVIS (T)
DEMOBILIZATION UNIT	DONNA THOMAS (V)	<b>8. Finance/Administration Section:</b>	
FIRE BEHAVIOR ANALYST	GREG TITUS ALLISON COONS	CHIEF	SANDRA MORRIS
TRAINING SPECIALIST	GREG SEAMON	DEPUTY	
GIS SPECIALIST	T.BARNES, A.POOLE (T) M. HAUNSPERGER, M. DISKIN (V)	TIME UNIT	CATHERINE FARLEY
TECHNOLOGY SUPPORT SPECIALIST	JOE ASHBY TONY FARMER	PROCUREMENT UNIT	
INCIDENT METEOROLOGIST	JEREMY MICHAEL	COMPENSATION UNIT	
AIR SPECIALIST	LINDA CHAPPELL STEVE PAES (T)	COST UNIT	KRISTIE BOWEN
<b>6. Logistics Section:</b>			
CHIEF	CHRIS REVELS		
DEPUTY	SALLY BROWNING		
SUPPORT BRANCH			
DIRECTOR	JOE WALKER		
SUPPLY UNIT	NINA DONLEY-RIVERS		
FACILITIES UNIT	SUSANNE ADAMS		
GROUND SUPPORT UNIT	ROBERT JOHNSON		
SERVICE BRANCH			
DIRECTOR			
COMMUNICATIONS UNIT	JERRY PATRICK, BARRY STEARNS		
<b>9. Prepared By:</b>	<b>Name:</b> KELLY RUSSELL	<b>Position/Title:</b> PSCC	<b>Signature:</b>
ICS 203	IAP Page	<b>Date/Time:</b> 08/28/2023 2130	



# Fire Weather Forecast



**FORECAST NO: 01**  
**PREDICTION FOR: Monday and Monday Night**  
**DATE: August 28th, 2023**  
**FORECAST ISSUED: 1800 August 27th 2023**

**Fire: Tiger Island**  
**UNIT: LA-LAS-000252**  
**Incident Meteorologist: *Jeremy Michael***  
**Signed: JRM (304-886-2331)**

---

**WEATHER DISCUSSION:** The frontal boundary that brought showers/storms to the area yesterday will push south of the area. The best chance for any storms will be south of the fire, but isolated activity may impact the fire area during the afternoon. Gusty outflow winds and lightning will be the main threat. Afternoon highs will drop back into the middle 90s with min RH values briefly dropping into the 40% range. Winds will be from the north to northeast with occasional afternoon gusts to 15 mph. Drying and warming trend begins on Tuesday as north/northeast offshore flow develops. Red Flag Warning conditions are possible Tuesday through the end of the work week.

**TODAY:**

**WEATHER:** Partly cloudy to mostly cloudy with isolated showers and thunderstorms during the afternoon.  
**MAX TEMP:** 95-98°      **MIN RH:** 45-50%  
**CHC WTG RAIN:** 30%      **LAL:** 2

**WINDS (20 feet):** N to NE 7-11 mph with gusts around 15 mph.  
**MIXING HEIGHT:** Morning inversion. 6000 ft during the afternoon.  
**TRANSPORT WIND:** NE 10-15 mph.

---

**TONIGHT:**

**WEATHER:** Any showers/storms ending during the evening. Mostly cloudy becoming partly cloudy.  
**MIN TEMP:** 72-75°      **MAX RH:** 90-100%  
**CHC WTG RAIN:** 10%      **LAL:** 2 then 1

**WINDS (20 feet):** Light and variable  
**TRANSPORT WIND:** Northeast 10-15 mph.

---

**TUESDAY:**


**WEATHER:** Partly cloudy. Isolated showers and thunderstorms during the afternoon.  
**MAX TEMP:** 95-98°      **MIN RH:** 40-45%  
**CHC WTG RAIN:** 20%      **LAL:** 2

**WINDS (20 feet):** NE 9-14 mph with gusts to 20 mph.  
**MIXING HEIGHT:** Morning inversion. 9000 ft during the afternoon.  
**TRANSPORT WIND:** NE 10-15 mph.

---

**EXTENDED OUTLOOK: Tuesday through Thursday:** Drying and warming trend expected with offshore flow and low afternoon RH in the 20/30% range. Tropical Cyclone Idalia will likely impact Florida later this week, with the fire area well to the west and northwest. This has the possibility to lead to another round of Red Flag Warnings for critical fire weather mid-week.

## FIRE BEHAVIOR FORECAST

<b>FORECAST NUMBER: 04</b>	<b>TYPE OF FIRE:</b> Wildland, Type 1
<b>FIRE NAME:</b> Tiger Island	<b>OPERATIONAL PERIOD:</b> Day Shift
<b>DATE ISSUED:</b> Sunday, August 27, 2023 <b>Time Issued:</b> 1900	<b>SHIFT DATE:</b> Monday, August 28, 2023
<b>UNIT:</b> Private Lands	<b>SIGNED:</b> Greg Titus, FBAN 

### WEATHER SUMMARY:

**Local Thresholds – Watch Outs**  
Temp >80°, Min RH < 35%, Winds > 20 mph  
KBDI >400, BI >19

**Forecast for Today**  
Temp: 96°, Min RH: 45%, Winds: 7-11 mph Gust 15  
KBDI: 790, BI: 21

### FIRE BEHAVIOR:

Fuels are critically dry. **KBDI and ERC values are at record levels.** Fuel conditions combined with gusty winds, especially during the afternoon, have the potential to produce extreme fire behavior. Fires may exhibit erratic and explosive growth behavior. Be alert for thunderstorms in the fire area and to the south causing strong erratic winds.

Predicted Fuel Conditions at Kirbyville RAWs – 19 miles WSW of the fire area.

Fine Dead Fuel Moisture = 6%, 1,000 Hour Fuel Moisture = 15.1%, KBDI = 790, ERC = 34 ↓ 1

#### Fire Behavior based on values for the fuel models shown.

Vegetation	Fuel Model	Max Rate of Spread	Flame Length
Grass/Shrub	GS3	53 ch/hr	10 feet
Southern Rough	7	43 ch/hr	7 ½ feet

Expect spotting distances of **0.2 miles**, this distance could be further if wind gusts exceed 15 mph.

Probability of Ignition = **67%**

In **15 minutes** a new spot fire or ignition could reach **4-6 acres**.

### Specific Areas of Concern:

The northern portions of the fire retain the most heat. North and Northeast winds will push this heat back into the fire. Be alert on the southern area of the fire as there are still areas of scattered heat, especially south of the 110 road on the east side of the fire.

The potential for thunderstorm development in the afternoon, bringing gusty and erratic winds. This could cause uncontained areas of the fire to become extremely active. These winds could rekindle fire in areas that have been dormant.

### AIR OPERATIONS:

Generally good conditions for air operations, no visibility issues, unless the fire makes a run and produces a large amount of smoke.

### Fire Behavior Safety Message

Fuels are extremely dry and drought conditions prevail. KBDI and ERC values are at all-time highs in and around the fire area. Any heat remaining has the potential to flare up. Expect active fire behavior of any fire that becomes established, with fuels in their current state, fire movement can be sustained even with a low wind component.

**Division/Group Assignment List (ICS 204 WF)**  
**Controlled Unclassified Information//Basic**

<b>1. Incident Name:</b>			<b>3.</b>			
TIGER ISLAND			<b>Branch:</b>		<b>Division/Group</b>	
<b>2. Operational Period: DAY</b>					<b>A/W</b>	
Date/Time From: 08/28/2023 0700 MON		Date/Time To: 08/29/2023 0700 TUE				
<b>4. Operations Personnel</b>						
<b>OPERATIONS CHIEF</b>		P.MYERS, J.KOLAKS (T)		<b>DIVISION/GROUP SUPERVISOR</b>		
<b>AIR ATTACK SUPERVISOR</b>						
<b>5. Resources Assigned this Period</b>						
Strike Team / Task Force / Resource Designator		LWD	Leader	Number Persons	Drop Off PT./Time	Pick Up PT./Time
ACORN FORESTRY			TBD			
SOFC			JOE CASTRO	1		
<b>6. Control Operations/Work Assignments:</b>						
<p>TASK: Reinforce dozer lines along fire's edge and along previous spots.  Check perimeter lines for holding integrity and begin to mop lines 100 feet interior.</p> <p>PURPOSE: Keep fire north of Hwy 110 W. Complete mop up to agency standards.</p> <p>END STATE: Protection of structures, property and natural resources to return to near normal.</p>						
<b>7. Special Instructions:</b>						
<b>8. Division/Group Communication Summary</b>						
Function	Channel	RX Frequency N/W	RX Tone/NAC	TX Frequency N/W	TX Tone/NAC	Mode
TACTICAL	1	168.0500N	110.9	168.0500N	110.9	A
TACTICAL	7	151.3700N	110.9	151.3700N	110.9	A
TACTICAL	8	151.4000N	110.9	151.4000N	110.9	A
TACTICAL	9	154.2800N	156.7	154.2800N	156.7	A
<b>9. Prepared By (Resource Unit Leader)</b>			<b>Approved By (Planning Section Chief)</b>		<b>Date</b>	<b>Time</b>
RICH AUBUCHON			KELLY RUSSELL		08/27/2023	2200

## Division/Group Assignment List (ICS 204 WF)

Controlled Unclassified Information//Basic

<b>1. Incident Name:</b>				<b>3.</b>		
TIGER ISLAND				<b>Branch:</b>	<b>Division/Group</b>	
<b>2. Operational Period: DAY</b>						
Date/Time From: 08/28/2023 0700      MON		Date/Time To: 08/29/2023 0700      TUE		<b>F</b>		
<b>4. Operations Personnel</b>						
<b>OPERATIONS CHIEF</b>		P.MYERS, J.KOLAKS (T)		<b>DIVISION/GROUP SUPERVISOR</b>		DAVID ZUARES
<b>AIR ATTACK SUPERVISOR</b>						
<b>5. Resources Assigned this Period</b>						
Strike Team / Task Force / Resource Designator		LWD	Leader	Number Persons	Drop Off PT./Time	Pick Up PT./Time
SC DOZER				2		
SC DOZER				2		
SC DOZER				2		
SC DOZER				2		
SC DOZER				2		
SC DOZER				3		
LADF DOZER				3		
LADF DOZER				3		
LADF DOZER				3		
LADF DOZER				3		
SOFC			JOE CASTRO	1		
<b>6. Control Operations/Work Assignments:</b>						
<p>TASK: Identify and establish dozer lines as direct as possible along fire's edge where needed to complete containment. Check and improve perimeter lines for holding integrity, including any hot spots from previous shift. Burn out when necessary as opportunity and resources present themselves</p> <p>PURPOSE: Keep fire east of Frazier Rd. and the HWY 190 corridor, south of Whiddon Rd and Shinn Rd.</p> <p>END STATE: Protection of Merryville, residences, structures and natural resources to provide the ability of residences a return to their homes.</p>						
<b>7. Special Instructions:</b>						
<b>8. Division/Group Communication Summary</b>						
Function	Channel	RX Frequency N/W	RX Tone/NAC	TX Frequency N/W	TX Tone/NAC	Mode
TACTICAL	2	168.2000N	110.9	168.2000N	110.9	A
TACTICAL	7	151.3700N	110.9	151.3700N	110.9	A
TACTICAL	8	151.4000N	110.9	151.4000N	110.9	A
TACTICAL	9	154.2800N	156.7	154.2800N	156.7	A
<b>9. Prepared By (Resource Unit Leader)</b>			<b>Approved By (Planning Section Chief)</b>		<b>Date</b>	<b>Time</b>
RICH AUBUCHON			KELLY RUSSELL		08/27/2023	2200

**Division/Group Assignment List (ICS 204 WF)**  
**Controlled Unclassified Information//Basic**

<b>1. Incident Name:</b>			<b>3.</b>			
TIGER ISLAND			<b>Branch:</b>		<b>Division/Group</b>	
<b>2. Operational Period: DAY</b>			LDAF DOZER GROUP			
Date/Time From: 08/28/2023 0700 MON		Date/Time To: 08/29/2023 0700 TUE				
<b>4. Operations Personnel</b>						
<b>OPERATIONS CHIEF</b>		P.MYERS, J.KOLAKS (T)		<b>DIVISION/GROUP SUPERVISOR</b>		JEFF ANDERS
<b>AIR ATTACK SUPERVISOR</b>						
<b>5. Resources Assigned this Period</b>						
Strike Team / Task Force / Resource Designator		LWD	Leader	Number Persons	Drop Off PT./Time	Pick Up PT./Time
LADF DOZER			JOHN NORMAN	3		
LADF DOZER			MATT CANNON	3		
LADF DOZER			FISHER GARDNER	3		
LADF DOZER			CRAIG HONEYCUTT	3		
LADF DOZER			RALFH WOODS	3		
SOFC			JOE CASTRO	1		
<b>6. Control Operations/Work Assignments:</b>						
TASK: Engage in high priority areas within Tiger Island Fire or initial attack.						
PURPOSE: Provide continuity between local resources and Red Team.						
END STATE: Safely and effectively manage the Tiger Island Fire.						
<b>7. Special Instructions:</b>						
<b>8. Division/Group Communication Summary</b>						
Function	Channel	RX Frequency N/W	RX Tone/NAC	TX Frequency N/W	TX Tone/NAC	Mode
TACTICAL	7	151.3700N	110.9	151.3700N	110.9	A
TACTICAL	8	151.4000N	110.9	151.4000N	110.9	A
TACTICAL	9	154.2800N	156.7	154.2800N	156.7	A
<b>9. Prepared By (Resource Unit Leader)</b>			<b>Approved By (Planning Section Chief)</b>		<b>Date</b>	<b>Time</b>
RICH AUBUCHON			KELLY RUSSELL		08/27/2023	2200



**Division/Group Assignment List (ICS 204 WF)**  
**Controlled Unclassified Information//Basic**

<b>1. Incident Name:</b>				<b>3.</b>		
TIGER ISLAND				<b>Branch:</b>	<b>Division/Group</b>  <b>NIGHT</b>	
<b>2. Operational Period: DAY</b>						
Date/Time From: 08/28/2023 0700 MON		Date/Time To: 08/29/2023 0700 TUE				
<b>4. Operations Personnel</b>						
<b>OPERATIONS CHIEF</b>		MARK JAMIESON		<b>DIVISION/GROUP SUPERVISOR</b>		
<b>AIR ATTACK SUPERVISOR</b>						
<b>5. Resources Assigned this Period</b>						
Strike Team / Task Force / Resource Designator		LWD	Leader	Number Persons	Drop Off PT./Time	Pick Up PT./Time
SC ENG				2		
SC ENG				2		
GA-GAS DOZ				2		
GA-GAS DOZ				2		
LA-STATE						
DIVS			TBD	2		
ENG1				3		
ENG1				3		
ENG1				3		
ENG6				3		
ENG6				3		
TENDER 2				2		
TENDER 2				2		
SOFC			TOMMY HAWKINS	1		
C-104 AMBULANCE						
AMBULANCE						
<b>6. Control Operations/Work Assignments:</b>						
<p>TASK: Assess and engage resources as needed along perimeter to safely contain the fire line.  Utilize LA State resources to assist in protecting resources and provide identified structure protection needs.  PURPOSE: Maintain current fire boundaries.  END STATE: Residences, structures and natural resources are at near normal conditions.</p>						
<b>7. Special Instructions:</b>						
<b>8. Division/Group Communication Summary</b>						
Function	Channel	RX Frequency N/W	RX Tone/NAC	TX Frequency N/W	TX Tone/NAC	Mode
TACTICAL	1	168.0500N	110.9	168.0500N	110.9	A
TACTICAL	7	151.3700N	110.9	151.3700N	110.9	A
TACTICAL	8	151.4000N	110.9	151.4000N	110.9	A
TACTICAL	9	154.2800N	156.7	154.2800N	156.7	A
<b>9. Prepared By (Resource Unit Leader)</b>			<b>Approved By (Planning Section Chief)</b>		<b>Date</b>	<b>Time</b>
RICH AUBUCHON			KELLY RUSSELL		08/27/2023	2200

## Division/Group Assignment List (ICS 204 WF)

Controlled Unclassified Information//Basic

<b>1. Incident Name:</b>		<b>3.</b>	
TIGER ISLAND		<b>Branch:</b>	<b>Division/Group</b>  <b>NIGHT</b>
<b>2. Operational Period:</b> <b>DAY</b>			
Date/Time From: 08/28/2023 0700                      MON	Date/Time To: 08/29/2023 0700                      TUE		
<b>4. Operations Personnel</b>			
<b>OPERATIONS CHIEF</b>	MARK JAMIESON	<b>DIVISION/GROUP SUPERVISOR</b>	
<b>AIR ATTACK SUPERVISOR</b>			

**7. Special Instructions:**

LA-State employ spotters to maintain personell accountability.  
Always position resources for rapid egress.

8. Division/Group Communication Summary						
Function	Channel	RX Frequency N/W	RX Tone/NAC	TX Frequency N/W	TX Tone/NAC	Mode
TACTICAL	1	168.0500N	110.9	168.0500N	110.9	A
TACTICAL	7	151.3700N	110.9	151.3700N	110.9	A
TACTICAL	8	151.4000N	110.9	151.4000N	110.9	A
TACTICAL	9	154.2800N	156.7	154.2800N	156.7	A

<b>9. Prepared By (Resource Unit Leader)</b>		<b>Approved By (Planning Section Chief)</b>		<b>Date</b>	<b>Time</b>
RICH AUBUCHON		KELLY RUSSELL		08/27/2023	2200

**Division/Group Assignment List (ICS 204 WF)**  
**Controlled Unclassified Information//Basic**

<b>1. Incident Name:</b>			<b>3.</b>			
TIGER ISLAND			<b>Branch:</b>		<b>Division/Group</b>	
<b>2. Operational Period: DAY</b>					O	
Date/Time From: 08/28/2023 0700 MON		Date/Time To: 08/29/2023 0700 TUE				
<b>4. Operations Personnel</b>						
<b>OPERATIONS CHIEF</b>		P.MYERS, J.KOLAKS (T)		<b>DIVISION/GROUP SUPERVISOR</b>		LISA LONCAR
<b>AIR ATTACK SUPERVISOR</b>						
<b>5. Resources Assigned this Period</b>						
Strike Team / Task Force / Resource Designator		LWD	Leader	Number Persons	Drop Off PT./Time	Pick Up PT./Time
<b>6. Control Operations/Work Assignments:</b>						
<b>7. Special Instructions:</b>						
<b>8. Division/Group Communication Summary</b>						
Function	Channel	RX Frequency N/W	RX Tone/NAC	TX Frequency N/W	TX Tone/NAC	Mode
TACTICAL	4	166.7250N	110.9	166.7250N	110.9	A
TACTICAL	7	151.3700N	110.9	151.3700N	110.9	A
TACTICAL	8	151.4000N	110.9	151.4000N	110.9	A
TACTICAL	9	154.2800N	156.7	154.2800N	156.7	A
<b>9. Prepared By (Resource Unit Leader)</b>			<b>Approved By (Planning Section Chief)</b>		<b>Date</b>	<b>Time</b>
RICH AUBUCHON			KELLY RUSSELL		08/27/2023	2200

**Division/Group Assignment List (ICS 204 WF)**  
**Controlled Unclassified Information//Basic**

<b>1. Incident Name:</b>			<b>3.</b>			
TIGER ISLAND			<b>Branch:</b>		<b>Division/Group</b>	
<b>2. Operational Period: DAY</b>					<b>J</b>	
Date/Time From: 08/28/2023 0700      MON		Date/Time To: 08/29/2023 0700      TUE				
<b>4. Operations Personnel</b>						
<b>OPERATIONS CHIEF</b>		P.MYERS, J.KOLAKS (T)		<b>DIVISION/GROUP SUPERVISOR</b>		DAVE WALKER, JOSH HARIRD (T)
<b>AIR ATTACK SUPERVISOR</b>						
<b>5. Resources Assigned this Period</b>						
Strike Team / Task Force / Resource Designator		LWD	Leader	Number Persons	Drop Off PT./Time	Pick Up PT./Time
GA-GAS ST#1			MATT RYMER, AUSTIN ROLAND (T)	2		
ENG6			DAVID HODGES	1		
ENG6			JOSEPH FINCHER	1		
ENG6			FRANK REDDING	1		
ENG6			KERRY PHILLIPS	1		
ENG6			PATRICK FLOYD	1		
SOFC			JOE CASTRO	1		
<b>6. Control Operations/Work Assignments:</b>						
<p>TASK: Identify and establish all dozer lines as direct as possible. Contain fire south of Stamps Rd. and west of Shultz Rd. Burn our where necessary to improve lines and holding integrity. Begin to mop up 100 feet interior from perimeter.</p> <p>PURPOSE: Structures are protected to withstand advancing fire and progression to north and east is halted.</p> <p>END STATE: Protection of structures, and natural resources to return near normal.</p>						
<b>7. Special Instructions:</b>						
<b>8. Division/Group Communication Summary</b>						
Function	Channel	RX Frequency N/W	RX Tone/NAC	TX Frequency N/W	TX Tone/NAC	Mode
TACTICAL	3	168.6000N	110.9	168.6000N	110.9	
TACTICAL	7	151.3700N	110.9	151.3700N	110.9	A
TACTICAL	8	151.4000N	110.9	151.4000N	110.9	A
TACTICAL	9	154.2800N	156.7	154.2800N	156.7	A
<b>9. Prepared By (Resource Unit Leader)</b>			<b>Approved By (Planning Section Chief)</b>		<b>Date</b>	<b>Time</b>
RICH AUBUCHON			KELLY RUSSELL		08/27/2023	2200





## HEALTH AND SAFETY MESSAGE

*“We don’t plan on luck to be safe; we plan on sound risk management and good decisions” .... the Red Team*

INCIDENT: Tiger Island Fire

DATE: August 28-29 2023

TIME: 0700-0700

### Major Hazards and Risks:

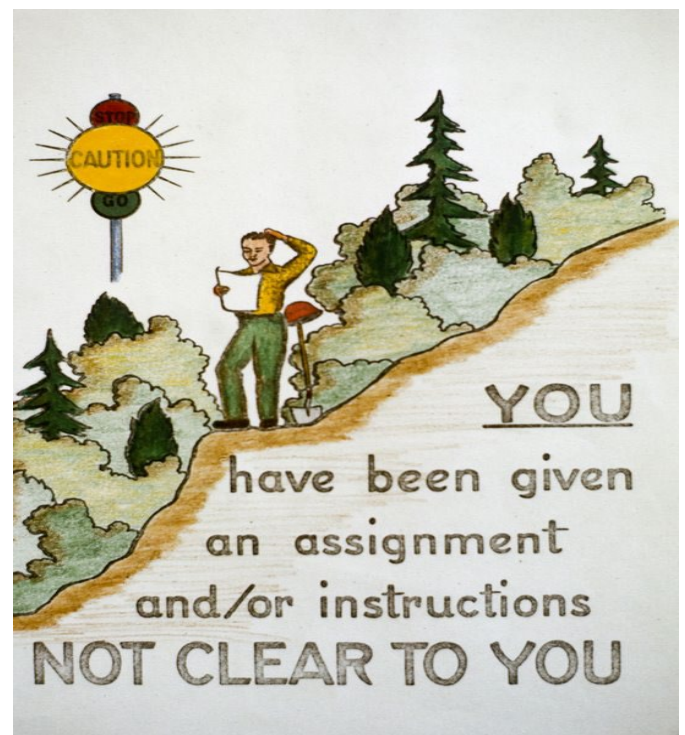
Transition  
Driving/dusty roads  
WUI  
Extreme Fire Behavior during over-night shift  
Heat Illness

Narrative: **Transition:** A new IMT assumed command of the incident and will be in the field coordinating with incident resources. It’s important to focus on the current action plan and not be distracted by the transition process. Maintain situational awareness and check each other for signs of cumulative fatigue. **Driving:** as on all incidents is a critical safety issue. Road conditions are variable in and around the incident due to very dry conditions and heavy use. Drive with Headlights on! On dirt roads drive slowly (<35 mph) due to dust. Maintain prudent following distance. Use good defensive driving techniques, be cautious and have patience with distracted drivers. When driving at night, increase following distances and reduce speed. **WUI:** The fire is impacting structures and nearby communities. Be careful when working around structures and be heads-up for hazardous materials (review pg. 11, IRPG). **Extreme Fire Behavior:** The area has been under extreme weather and temperatures have been consistently above 100 degrees for several weeks. Erratic winds have worsened the situation. Nighttime fire behavior has been increasing around 2400. Base all planned actions on current and predicted weather and 10 Standard Orders/18 Watch Out Situations.

### Standard Firefighting Orders

1. Keep informed on fire weather conditions and forecasts.
2. Know what your fire is doing at all times.
3. Base all actions on current and expected behavior of the fire.
4. Identify escape routes and safety zones and make them known.
5. Post lookouts when there is possible danger.
6. Be alert. Keep calm. Think clearly. Act decisively.
7. Maintain prompt communications with your forces, your supervisor, and adjoining forces.
8. Give clear instructions and insure they are understood.
9. Maintain control of your forces at all times.
10. Fight fire aggressively, having provided for safety first.

### WATCH OUT SITUATION



Red Team Safety Officers: Joe Castro, Tommy Hawkins, Brad Lidell, Jason Rose

Incident Risk Assessment Worksheet					1. Incident Name/Number Tiger Island Fire/LA-LAS000252		2. Location DeRidder, LA			
Identification of Hazards and Risk Assessment					3. Name and Title of Analyst Brad Lidell, Tommy Hawkings, Joe Castro, Safety Officer		4. Date Monday, August 28, 2023			
5. Pre-Control					6. Control or Abatement Action (Engineering, Administrative, PPE, Avoidance, Education, etc)		7. Post-Control			
8. Location	9. Hazard	10. Hazard Probability	11. Severity Code	12. RAC	Actions (double-click in cell then click alt + enter to add a line)	13. Hazard Probability	14. Severity Code	15. RAC	16. Acceptable (Yes/No)	
All	Air Operations	Occasional C	Catastrophic I	Serious	<ul style="list-style-type: none"> <li>~ Follow "Aviation Watch-Out Situations" on page 44, IRPG.</li> <li>~ Don't plan on air resources for medical transport or resupply.</li> <li>~ Refer to page 57, IRPG for directing bucket drops.</li> <li>~ Ensure positive communication with all air resources.</li> <li>~ Be sure communications is established with air and ground personnel during bucket drops.</li> </ul>	Rarely D	Catastrophic I	Moderate	Yes	
All	Heat Related Illness (HRI)& Dehydration	Occasional C	Catastrophic I	Serious	<ul style="list-style-type: none"> <li>~ Drink Fluids throughout operational period (6-8 qts/shift).</li> <li>~ Maintain water/electrolyte ratio of 3 to 1.</li> <li>~ Carry extra water on line and cache water at drop points.</li> <li>~ Take Frequent breaks, minimum of 10 minutes every hour.</li> <li>~ Allow out of area resources time to acclimatize before expecting peak performance.</li> <li>~ Recognize symptoms of HEAT RELATED ILLNESS which include. <ul style="list-style-type: none"> <li>o Lack of energy</li> <li>o Headaches, dizziness</li> <li>o Lack of rest</li> <li>o No hunger, poor eating habits</li> <li>o Hot skin, and lack of sweating</li> </ul> </li> </ul>	Occasional C	Critical II	Moderate	Yes	
All	Extreme Fire Behavior	Frequently A	Critical II	Critical	<ul style="list-style-type: none"> <li>~ Share weather observations with all personnel assigned to division.</li> <li>~ Establish "Trigger Points" to withdraw.</li> <li>~ Use "Risk Management" process prior to engaging in suppression actions, refer to page 1, IRPG.</li> </ul>	Frequently A	Significant III	Serious	Yes	
All	Power Utilities	Likely B	Critical II	Serious	<ul style="list-style-type: none"> <li>~ Notify all personnel of down electrical lines.</li> <li>~ Refer to the IRPG page 24 for Power Line Safety.</li> <li>~ Always treat downed wires as energized.</li> <li>~ Identify and avoid high tension transmission lines.</li> <li>~ Identify and avoid high pressure natural gas lines.</li> <li>~ Identify and avoid damaged gas service near structures.</li> <li>~ Be aware of utility restoration in your work area.</li> </ul>	Likely B	Significant III	Moderate	Yes	



All	Driving & Traffic	Likely B	Critical II	Serious	<ul style="list-style-type: none"> <li>~ Practice "Defensive Driving" techniques traveling on all roads and city streets especially when navigating Hwy 70.</li> <li>~ Use spotters when backing.</li> <li>~ Honk horn to alert personnel when backing.</li> <li>~ Maintain lane control when encountering wildlife within the roadway.</li> <li>~ Keep clutter off dash and inside cab.</li> <li>~ Follow Driving LCES (Lights, Chock blocks, Emergency brake, Seat belts).</li> <li>~ Always use headlights.</li> <li>~ Yield to pedestrians and bicycles.</li> <li>~ Observe posted speed limits.</li> <li>~ Use the 3 second rule for following distance when driving.</li> <li>~ Use chock blocks, turn wheels into hill.</li> <li>~ Avoid distractions (eating, cell phones, radio).</li> <li>~ Ensure that windshields are kept clean of dust and bugs.</li> <li>~ Observe all posted speed limits in school zones and Cherry Point Marine Base.</li> <li>~ Speed limit on the Forest Roads is 35 mph.</li> <li>~ Do not block road when conversing. Pull over to edge of road.</li> </ul>	Occasional C	Significant III	Minor	Yes
All	Structure Protection & HAZMAT	Likely B	Significant III	Moderate	<ul style="list-style-type: none"> <li>~ Review "Wildland Urban Interface" Watch outs, IRPG page 11.</li> <li>~ Follow "HAZMAT Incident Operations" on pages 54-55 in IRPG.</li> <li>~ Communicate with local emergency services from (Carteret Craven, Jones) for immediate structure protection.</li> </ul>	Occasional C	Significant III	Minor	Yes
All	Communications	Likely B	Significant III	Moderate	<ul style="list-style-type: none"> <li>~ Maintain communication with aviation resources, and suppression organization.</li> <li>~ Ensure all know frequency and protocol for contacting resources.</li> <li>~ Utilize the ICS 205.</li> <li>~ Utilize human repeaters when working in dead spots.</li> </ul>	Occasional C	Significant III	Minor	Yes
All	Injury & Medical Emergency	Likely B	Significant III	Moderate	<ul style="list-style-type: none"> <li>~ Assist injured employee appropriate medical care.</li> <li>~ Use EMT's on Division for initial care.</li> <li>~ Follow emergency medical care guidelines as outlined in IRPG Pg 105.</li> <li>~ Ensure all resources are familiar with the IW1 plan as outlined in the IAP.</li> </ul>	Occasional C	Significant III	Minor	Yes
All	Severe Weather	Likely B	Significant III	Moderate	<ul style="list-style-type: none"> <li>~ Review and follow Thunderstorm Safety guidelines on page 17 of the IRPG.</li> <li>~ Observe 30/30 Rule for lightning safety.</li> <li>~ Establish "Trigger Points" to withdraw, and ensure all know rally site.</li> <li>~ Use "Risk Management" process to determine retreat criteria and actions.</li> </ul>	Occasional C	Significant III	Minor	Yes

All	Pumps	Likely B	Significant III	Moderate	<ul style="list-style-type: none"> <li>~ Always wear appropriate hearing protection.</li> <li>~ Position personnel far enough away from pump to hear instructions on radio.</li> <li>~ Keep all fuel &gt;4' from creek and pump to reduce fire hazard and spill.</li> <li>~ Rotate personnel every hour to limit exposure to high decibels of sound from pump.</li> <li>~ Allow pumps to cool for 5 minutes prior to re-fueling to reduce fire hazard.</li> <li>~ Clean around pumps to identify snakes attracted to the heat and vibration.</li> </ul>	Occasional C	Significant III	Minor	Yes
All	Mop-up & Rehab	Likely B	Significant III	Moderate	<ul style="list-style-type: none"> <li>~ Do not work above or below personnel during rehab/mop-up operations.</li> <li>~ Alert crew personnel of rolling debris by yelling to affected individuals.</li> <li>~ Position debris that could roll vertically on slope.</li> <li>~ Wear eye protection.</li> </ul>	Occasional C	Significant III	Minor	Yes
All	Heavy Equipment Operations	Occasional C	Catastrophic I	Serious	<ul style="list-style-type: none"> <li>~ Ensure communications are established with operators.</li> <li>~ Use hand signals if other communications are unavailable.</li> <li>~ Maintain a 50'-100' exclusion area around equipment and increase it to 1 1/2 times tree height when in timber.</li> <li>~ Use a spotter when backing.</li> <li>~ Avoid working under excavator arm during operation.</li> <li>~ During winching operations, maintain minimum of one cable length from tension area.</li> <li>~ Maintain 3 points of contact at all times when entering and exiting equipment.</li> </ul>	Occasional C	Significant III	Minor	Yes
All	Bees, Ticks, Mosquitoes	Likely B	Significant III	Moderate	<ul style="list-style-type: none"> <li>~ Canvas crew members for those with known allergic reactions to stings.</li> <li>~ Ensure crew members have medication pens if needed.</li> <li>~ Perform daily self inspection.</li> <li>~ Use repellent as necessary.</li> <li>~ Advanced Life Support, multi-dose epi and airway protection.</li> <li>~ Keep affected area clean and bandaged.</li> <li>~ Be extra careful when eating and/or drinking to avoid stings to mouth and throat.</li> </ul>	Occasional C	Minor IV	Negligible	Yes
All	Indirect Fireline	Likely B	Significant III	Moderate	<ul style="list-style-type: none"> <li>~ Identify escape routes and safety zones (IRPG pg. 6).</li> <li>~ Review "Strategy/Indirect Attack" (IRPG pg. 82).</li> </ul>	Occasional C	Minor IV	Negligible	Yes

**Controlled Unclassified Information/Basic**

**ICS 205**

<b>INCIDENT RADIO COMMUNICATIONS PLAN</b>			Incident Name <b>TIGER ISLAND FIRE</b>			Date/Time Prepared: <b>AUGUST 27, 2023 1800 HRS</b>			Operational Period Date/Time <b>From: 8/28/23 0700 HRS To: 08/29/23 0700 HRS</b>	
Ch #	Function	Channel Name/Trunked Radio System Talkgroup	Assignment	RX Freq N or W	RX Tone/NAC	TX Freq N or W	Tx Tone/NAC	Mode	Remarks	
1	TAC	TAC 1	DIV A/W/NIGHT	168.0500N	110.9	168.0500N	110.9	A		
2	TAC	TAC 2	DIV F	168.2000N	110.9	168.2000N	110.9	A		
3	TAC	TAC 3	DIV J	168.6000N	110.9	168.6000N	110.9	A		
4	TAC	TAC 4	DIV O	166.7250N	110.9	166.7250N	110.9	A		
5	TAC	TAC 5	STRUCTURE GROUP	166.7750N	110.9	166.7750N	110.9	A		
6										
7	TAC	D4 WEST TALK	ALL DIVS	151.3700N	110.9	151.3700N	110.9	A		
8	TAC	WEST FIRE 1	ALL DIVS	151.4000N	110.9	151.4000N	110.9	A		
9	TAC	VFIRE 21	ALL DIVS	154.2800N	156.7	154.2800N	156.7	A		
10										
11										
12										
13	AIR TO GROUND	A/G PRI	A/G PRIMARY	168.4000N		168.4000N		A		
14	AIR TO GROUND	A/G SEC	A/G SECONDARY	159.3000N	114.8	159.3000N	114.8	A		
15										
16	AIR GUARD	AIRGUARD	ALL	168.6250N	110.9	168.6250N	110.9	A	Air Guard	
5. Prepared by (Communications Unit) Jerry W Patrick, COML					Incident Location: TIGER ICP County/State LA			Latitude / Longitude: ° / °		

**The convention calls for frequency lists to show four digits after the decimal place, followed by either an "N" or a "W", depending on whether the frequency is narrow or wide band. Mode refers to either "A" or "D" indicating analog or digital (Project 25).**

**\*\*\* Special Instructions: Use Human Repeater When Necessary. ALL Medical calls use Command "x" (Channel "x") to ----- Communications to initiate IWI. Divide Communications Cell - (406) 438-1685**

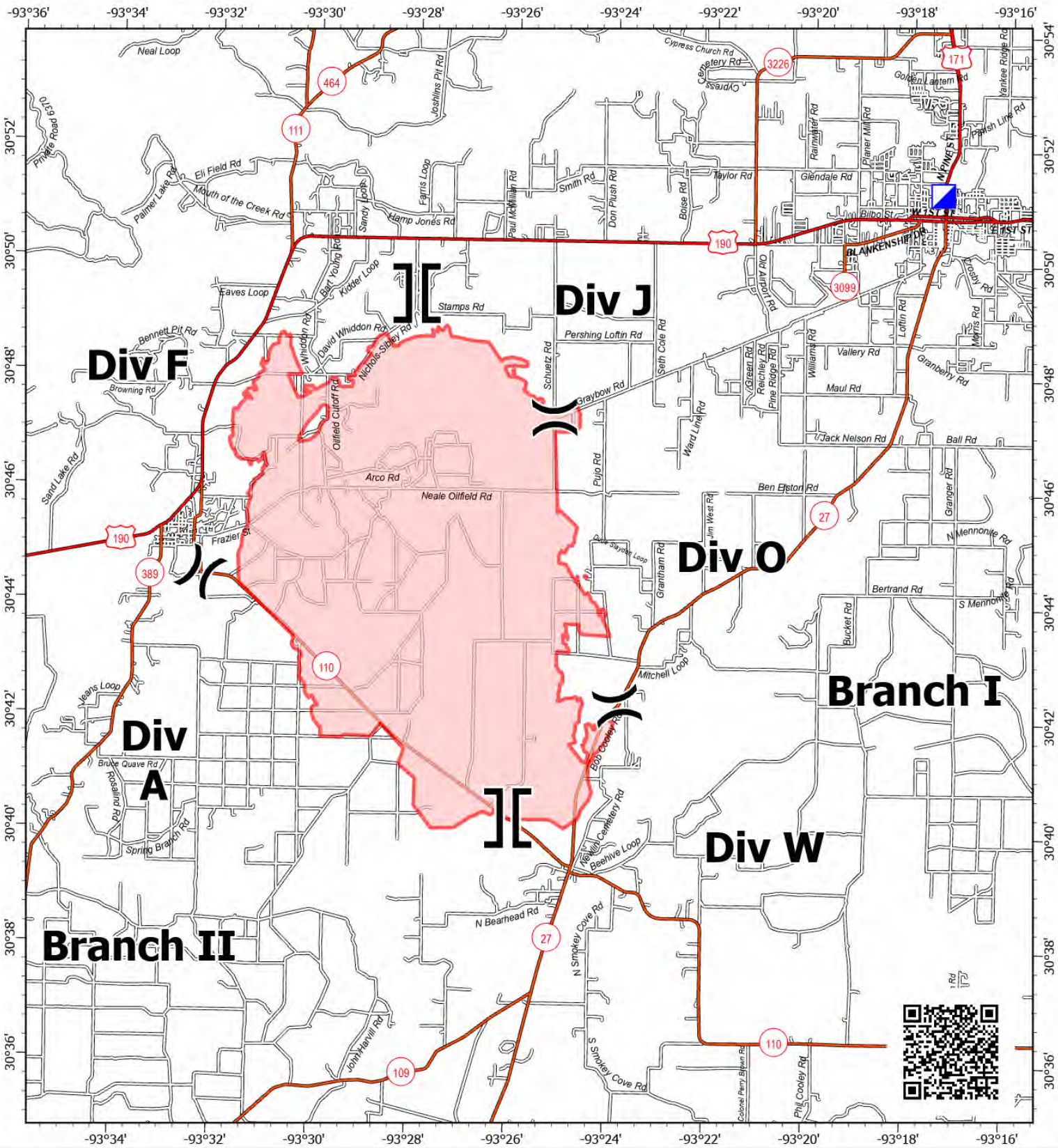
# Training Message

## *ALL* Trainees:

If you are a trainee on the Tiger Island Fire, be sure to check in with the Training Specialist. Bring your Task Book, your red card, your Order #, and your coach/evaluator to the Training Specialist by the Check-In table inside the front door in the ICP.

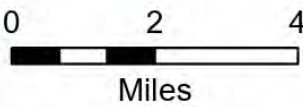
I will be available throughout the day to answer any training questions you may have.

Greg Seamon  
Training Specialist  
08/28/2023



**IAP Map**  
 Tiger Island  
 LA-LAS-000252  
 08/28/2023

33,294 acres at August 27, 2023 1254



- (X) Division Break
- [ ] Branch Break
- 📍 Incident Command Post
- Primary Highway
- Secondary Highway
- Road, Unspecified
- 🔴 Wildfire Daily Fire Perimeter

1:170,000 | SA Red Team GIS | 8/27/2023 1723  
 Acres from IR and GPS  
 North American 1983 Datum, LatLong Grid

# Tiger Island ICP Map



# REQUEST ACCESS TO ARCGIS FIELD MAPS

for interactive mobile maps and field data collection

## STEP 1

**Request a NIFC ArcGIS Account**

**If you do not already have one**



NIFC Account Request Form

<https://bit.ly/3OLBG1W>

## STEP 2

**Request access to collect and/or view incident data.**

Email [matthew\\_haunsperger@firenet.gov](mailto:matthew_haunsperger@firenet.gov)

Subject: Request Tiger Island Access

Include your name, position, and NIFC login in your email.

## Step 3

**Download ArcGIS Field Maps app**



- Search “ArcGIS Field Maps” in the App Store for iPhone & on Google Play for Androids.
- Sign into your NIFC ArcGIS account through the app once installed.







# MEDICAL PLAN (ICS 206 WF)

Controlled Unclassified Information//Basic

<b>1. Incident/Project Name</b>				<b>2. Operational Period</b>							
Tiger Island				08/28/23 - 08/29/23							
<b>2. Medical Aid Stations</b>											
<b>Medical Aid Stations</b>			<b>Location</b>			<b>Advanced Life Support (ALS)</b> Yes No					
<b>3. Ambulance Services</b>											
<b>Name</b>		<b>Location</b>		<b>Phone</b>		<b>Advanced Life Support (ALS)</b> Yes No					
LA 007		Division F		(337) 660-5990		X					
LA 018		Division O		(337) 660-5990		X					
LA 021				(337) 660-5990		X					
Local EMS		<i>For emergencies outside of incident</i>		911		X					
<b>4. Air Ambulance Services</b>											
<b>Name</b>			<b>Location, Capabilities</b>			<b>Advanced Life Support (ALS)</b> Yes No					
Coast Guard New Orleans Sector (504) 589-6225			2-2.5 hr response time Hoist, Night Vision, BLS Houston or New Orleans			X					
Acadian Air Med (337) 291-1594			Woodworth, LA Lat/Long 31° 05.820', -92° 17.694'			X					
Acadian Air Med (337) 291-1594			Lake Charles Regional Airport Lat/Long 30° 04.404', -93° 08.502'			X					
<b>5. Hospitals</b>											
<b>Name/Address</b>		<b>GPS Datum – WGS 84 Coordinate Standard</b>		<b>Travel Time</b> Air Gnd		<b>Phone</b>		<b>Helipad</b> Yes No		<b>Level of Care Facility</b>	
Ochsner LSU Health Shreveport 1541 Kings Highway Shreveport, LA 71103		<b>Lat:</b> 32° 29.724'		40 min 113 min		(318) 626-0000		X		L1 Trauma, STEMI, Stroke, Burn Center	
		<b>Long:</b> -93° 45.000'									
Byrd Regional Hospital 1020 Fertitta Blvd. Leesville, LA 71446		<b>Lat:</b> 35° 54.303'		20 min 40 min		(337) 239-9041		X		Stroke Center	
		<b>Long:</b> -79° 3.041'									
Rapides Regional Medical 211 4th St Alexandria, LA 71301		<b>Lat:</b> 34° 43.566'		30 min 105 min		(318) 769-3000		X		L2 Trauma, STEMI	
		<b>Long:</b> -76° 45.307'									
University Medical Center 2000 Canal St. New Orleans, LA 70112		<b>Lat:</b> 29° 57.561'		100 min 4 hrs		(504) 702-3000		X		L1 Trauma, STEMI, Stroke, Burn Center	
		<b>Long:</b> -90° 4.964'									
VHF:											
<b>6. Clinics</b>											
Outpatient Medical Center		908 S 10th St Suite B, Leesville, LA (337) 238-1274 (0800-1800 Mon, Tue, Thu; 0800-1700 Wed; 0800-1300 Fri)									
QTC Medical Group		802 S 10th St C, Leesville, LA (337) 238-4189 (0800-1700 Mon-Fri)									

<b>8. Prepared By (Medical Unit Leader)</b>		<b>9. Date/Time</b>		<b>10. Reviewed by (Safety Officer)</b>	
Fred Adler, MEDL (479) 238-6064 Nick Arnett, MEDL (408) 888-1900		8/27/2023		Brad Liddell, SOFC	

## IWI IC Responsibilities

- Take charge of the scene – inform the Division Supervisor and call ambulance number above, establish radio communications (frequencies, channels). Identify the emergency name – Division A medical, etc.
- Assign or begin patient assessment (Medical Incident Report - MIR) and first aid. Request additional medical resources on division/branch or across incident. Transmit MIR patient information to Communications.
- Determine patient transportation through consultation with line medical personnel and Medical Unit Leader. Consider transportation time, risk to personnel, destination facility and available operational resources. If air transport is chosen, implement the plan for alternative transportation in the event aircraft cannot complete the mission. Order transportation resources through Communications as early as possible.
- Notify Communications as resources arrive and any patient status changes. Names of injured or deceased individuals will not be transmitted on the radio.
- Initiate documentation for future investigation; if a line safety officer is available, assign them to lead documentation. Do not move deceased individuals, gear or personal effects except to accomplish rescue work or protect the safety of others. Obtain written documentation of witnesses. The Unit Log, ICS 214, may be used for the initial documentation, but a subsequent narrative will be required.
- As appropriate, conduct an After Action Review to determine successes, areas to improve and lessons learned.