

# Tiger Island Fire

LA-LAS-000252

IAP

August 29, 2023 – Day Shift

August 29-30, 2023 – Night Shift



Link to Tiger Island Maps

Finance/Time: [2023.tigerisland.finance@firenet.gov](mailto:2023.tigerisland.finance@firenet.gov)

Plans: [2023.tigerisland.plans@firenet.gov](mailto:2023.tigerisland.plans@firenet.gov)

Demob: [2023.tigerisland.demob@firenet.gov](mailto:2023.tigerisland.demob@firenet.gov)

*Help us tell the story of the Tiger Island Fire!!*

Send your Tiger Island Fire photos to [2023.tigerisland@firenet.gov](mailto:2023.tigerisland@firenet.gov)

[Tiger Island Inciweb](#)

[Tiger Island Facebook](#)



## INCIDENT OBJECTIVES (ICS 202)

<b>1. Incident Name:</b>	<b>2. Operational Period: DAY/NIGHT</b>	
TIGER ISLAND	Date/Time From: 08/29/2023 0700      TUE	Date/Time To: 08/30/2023 0700      WED
<b>3. Objective(s):</b>		
<p>1. All operations will be conducted with safety of the public and firefighters in mind. Protection of life and property is your highest priority task. When in doubt, sacrifice acres rather than firefighter and public safety.</p> <p>2. Provide public information regarding fire danger to maintain good awareness of the risk and hazards to the public. Coordinate with LDAF Public Information Officer at (225) 975-7532 or <a href="mailto:presssecretary@ldaf.la.gov">presssecretary@ldaf.la.gov</a> and State Fire Marshall's Public Affairs Director at (225) 620-5115 or <a href="mailto:ashley.rodrigue@la.gov">ashley.rodrigue@la.gov</a>.</p> <p>3. Manage the human resources assigned to fire incident in a manner that promotes mutual respect and is consistent with interagency human resource objectives. The team will handle EEO complaints in consultation with LDAF Human Resources involving personnel attached to the team.</p> <p>4. Continue partnership and coordination with the appropriate LDAF, State Fire Marshall, GOHSEP, and local public safety officials.</p> <p>5. Manage incident in a cost effective manner.</p>		
<b>4. Operational Period Command Emphasis:</b>		
Stop, Think, Discuss then Act, and ensure LCES is in place prior to engaging the fire. The Tiger Island Fire receives a strategic, risk-based response, commensurate with the threats and opportunities, and uses the full spectrum of management actions, that consider fire and fuel conditions, weather, values at risk, and resources available.		
<b>General Situational Awareness:</b>		
Watch Out Situations: Extreme heat, dry fuels and fire behavior. Aviation use and possible long medivac times. Cumulative fatigue.		
<b>5. Site Safety Plan Required?</b> Yes <input type="checkbox"/> No <input checked="" type="checkbox"/>		
<b>Approved Site Safety Plan(s) Located</b>		
<b>6. Incident Action Plan</b> (the items checked below are included in this Incident Action Plan):		
<input type="checkbox"/> ICS 202 <input type="checkbox"/> ICS 203 <input type="checkbox"/> ICS 204 <input type="checkbox"/> ICS 205 <input type="checkbox"/> ICS 205A <input type="checkbox"/> ICS 206	<input type="checkbox"/> ICS 207 <input type="checkbox"/> ICS 208 <input type="checkbox"/> ICS 220 <input type="checkbox"/> Map/Chart <input type="checkbox"/> Weather Forecast/Tides/Currents	<b>Other Attachments:</b> <input type="checkbox"/> _____ <input type="checkbox"/> _____ <input type="checkbox"/> _____ <input type="checkbox"/> _____
<b>7. Prepared by:</b> KELLY RUSSELL	<b>Position/Title:</b> PSCC	<b>Signature:</b>
<b>8. Approved by Incident Commander:</b>	<b>Name:</b>	<b>Signature:</b>
<b>ICS 202</b>	<b>IAP Page</b>	<b>Date/Time:</b>

## ORGANIZATION ASSIGNMENT LIST (ICS 203)

<b>1. Incident Name:</b>		<b>2. Operational Period: DAY</b>	
TIGER ISLAND		Date/Time From: 08/29/2023 0700 TUE	Date/Time To: 08/30/2023 0700 WED
<b>3. Incident Commander(s) and Command Staff:</b>		COMMUNICATIONS UNIT	JERRY PATRICK, BARRY STEARNS
IC/UC	STEVE PARRISH	MEDICAL UNIT	NICK ARNETT, FRED ADLER
DEPUTY	PAT PEARSON	FOOD UNIT	DAVID MALONE
IC/UC	JAY MICKEY (T)	<b>7. Operations Section:</b>	
SAFETY OFFICER	B.LIDELL, T.HAWKINS, J.CASTRO, J.ROSE	DAY OPS SECTION CHIEF	SHANE STURGILL
INFORMATION OFFICER	B.STRAWSER, S.HELSE, G.KNIGHT, A.WI	NIGHT OPS SECTION CHIEF	MARK JAMIESON
LIAISON OFFICER	BRADLEY WRIGHT (T)	PLANNING OPS	T.FLOYD, V.EDGE
<b>4. Agency/Organization Representative(s):</b>		FIELD OPS	P.MYERS, J.KOLAKS (T)
<b>Agency/Organization</b>	<b>Name</b>		
		DIVISION/GROUP	A/W UNSTAFFED
LDAF	WADE DUBEA STATE FORESTER	DIVISION/GROUP	F DAVID ZUARES
LDAF	MATT POLK CHIEF, MARK DAVIS	DIVISION/GROUP	J DAVID WALKER, JOSH HARIRD (T)
SE COMPACT	DARYL JONES	DIVISION/GROUP	O LISA LONCAR
NATIONAL GUARD	COL SCOTT SLAVEN	DIVISION/GROUP	STRUCTURE GROUP CRAIG ROBERTSON
GOHSEP	TODD SMITH, AMY MICHAELS	DIVISION/GROUP	LDAF DOZER GROUP TBA
FIRE MARSHALL	R.SHOULTZ, C.ROBERSON	DIVISION/GROUP	NIGHT UNSTAFFED
<b>5. Planning Section:</b>		<b>7b. Air Operations Branch:</b>	
CHIEF	K,RUSSELL, M.OLSON	AIR OPS BRANCH DIRECTOR	DARLENE HALL
RESOURCES UNIT	RICH AUBUCHON	AIR SUPPORT SUPERVISOR	CLINT DAVIS (T)
SITUATION UNIT	ERIC SCHMECKPEPPER	<b>8. Finance/Administration Section:</b>	
DEMOBILIZATION UNIT	DONNA THOMAS (V)	CHIEF	SANDRA MORRIS
FIRE BEHAVIOR ANALYST	GREG TITUS ALLISON COONS	DEPUTY	
TRAINING SPECIALIST	GREG SEAMON	TIME UNIT	CATHERINE FARLEY
GIS SPECIALIST	T.BARNES, A.POOLE (T) M. HAUNSPERGER, M. DISKIN (V)	PROCUREMENT UNIT	
TECHNOLOGY SUPPORT SPECIALIST	JOE ASHBY TONY FARMER	COMPENSATION UNIT	
INCIDENT METEOROLOGIST	JEREMY MICHAEL	COST UNIT	KRISTIE BOWEN
AIR SPECIALIST	LINDA CHAPPELL STEVE PAES (T)		
<b>6. Logistics Section:</b>			
CHIEF	CHRIS REVELS		
DEPUTY	SALLY BROWNING		
SUPPORT BRANCH			
DIRECTOR	JOE WALKER		
SUPPLY UNIT	NINA DONLEY-RIVERS		
FACILITIES UNIT	SUSANNE ADAMS		
GROUND SUPPORT UNIT	ROBERT JOHNSON		
SERVICE BRANCH			
DIRECTOR			
<b>9. Prepared By:</b>	<b>Name:</b> KELLY RUSSELL	<b>Position/Title:</b> PSCC	<b>Signature:</b>
ICS 203	IAP Page	<b>Date/Time:</b> 08/28/2023 2130	



To: All Incident Personnel, Tiger Island Fire

As Southern Area National Type I Incident Commander, I am committed to a policy of “zero tolerance” of inappropriate behavior during incident operations. Any form of harassment, discriminatory practices, or disrespectful behavior will not be tolerated. Known or reported acts will be dealt with appropriately.

I am particularly concerned about the perception that alcohol has a place in any of the Incident facilities. It is not appropriate to indulge in alcoholic beverages during any fire assignment.

The Southern Area Red Team has a policy of “NO ALCOHOL” from the time of dispatch until the time of physical release from the Incident. Members of the Team voluntarily comply with this policy; all incident personnel will be expected to do so also.

We endorse, support, and expect an attitude of mutual respect for all Incident personnel and the public we serve. We also, endorse the attitude and work ethic that places “Safety First, every time on every Incident.” We expect nothing less.

/s/Steve Parrish

Incident Commander

SA Red Team



# Fire Weather Forecast

**FORECAST NO: 02**  
**PREDICTION FOR: Tuesday and Tuesday Night**  
**DATE: August 29th, 2023**  
**FORECAST ISSUED: 1800 August 28th, 2023**

**Fire: Tiger Island**  
**UNIT: LA-LAS-000252**  
**Incident Meteorologist: *Jeremy Michael***  
**Signed: JRM (304-886-2331)**

**WEATHER DISCUSSION:** **\*\*\*ELEVATED FIRE WEATHER\*\*\***

The drying and warming trend begins today as temperatures hold steady around the middle 90s and RHs drop briefly into the 30% range during peak heating. Offshore flow develops by afternoon with a few gusts around 15 mph. An isolated shower or storm could develop during the afternoon, but should stay south and east of the fire area. The main concern will be lightning and gusty outflow winds, with no wetting rains expected. Another round of Red Flag Warnings are becoming increasingly likely Wednesday and Thursday as temperatures around 100 degrees combine with RH dipping into the 20% range. Some localized areas may see RH briefly fall into the upper teens with breezy winds during the afternoon.

**TODAY:**

**WEATHER:** Partly cloudy. Afternoon isolated showers and T'storms possible. Mainly south and east of the fire area.  
**MAX TEMP:** 94-97° **Heat Index:** 95-98° **MIN RH:** 35-40%  
**PROBABILITY OF PRECIP:** 20% **CHC WTG RAIN:** 10% **LAL:** 2

**WINDS (20 feet):** N/NE 8-13 mph with gusts up to 20 mph.  
**MIXING HEIGHT:** Weak morning inversion. 6000-7000 ft during the afternoon.  
**TRANSPORT WIND:** N/NE 11-16 mph.

**TONIGHT:**

**WEATHER:** Mostly clear.  
**MIN TEMP:** 70-73° **MAX RH:** 60-70%  
**PROBABILITY OF PRECIP:** 0% **CHC WTG RAIN:** 0% **LAL:** 1

**WINDS (20 feet):** NE 5 mph.  
**TRANSPORT WIND:** N/NE 15-20 mph.

**WEDNESDAY:**

**WEATHER:** Sunny and hot.  
**MAX TEMP:** 96-99° **HEAT INDEX:** 95-98° **MIN RH:** 19-24%  
**PROBABILITY OF PRECIP:** 0% **CHC WTG RAIN:** 0% **LAL:** 1

**WINDS (20 feet):** N 9-14 mph with gusts up to 20 mph.  
**MIXING HEIGHT:** Weak morning inversion. 6000-7000 ft during the afternoon.  
**TRANSPORT WIND:** N 15-20 mph.

**EXTENDED OUTLOOK: Thursday through Saturday:** Hot and very dry Thursday with critical fire weather likely as offshore flow continues. By Friday, flow becomes more onshore with a slight increase in moisture. While onshore flow increases, elevated fire weather is still expected as gusty winds could accompany the sea breeze as it pushes inland. On Saturday, onshore flow is likely to strengthen with increasing afternoon RH back into the 40% range and excellent recoveries of 90-100%. Winds will generally be lighter during the afternoon, but the sea breeze front could cause gusty winds in the early evening for a few hours. The slight increase in moisture will also bring back isolated showers and thunderstorms into the weekend.

## FIRE BEHAVIOR FORECAST

<b>FORECAST NUMBER: 05</b>	<b>TYPE OF FIRE:</b> Wildland, Type 1
<b>FIRE NAME:</b> Tiger Island	<b>OPERATIONAL PERIOD:</b> Day and Night Shift
<b>DATE ISSUED:</b> Monday, August 28, 2023 <b>Time Issued:</b> 1800	<b>SHIFT DATE:</b> Tuesday, August 29, 2023
<b>UNIT:</b> Private Lands	<b>SIGNED:</b> Greg Titus, FBAN <span style="float: right;"><i>Greg Titus</i></span>

### WEATHER SUMMARY:

<b>Local Thresholds – Watch Outs</b> Temp >80°, Min RH < 35%, Winds > 20 mph KBDI >400, BI >19	<b>Forecast for Today</b> Temp: 94°, Min RH: 41%, Winds: 8-10 mph Gust 18 KBDI: 790, BI: 24
--	---

### FIRE BEHAVIOR:

Fuels are critically dry. **KBDI and ERC values are at record levels.** Fuel conditions combined with gusty winds, especially during the afternoon, have the potential to produce extreme fire behavior. Fires may exhibit erratic and explosive growth. Be alert for thunderstorms in the fire area causing strong erratic winds.

#### Fuel Conditions at Kirbyville RAWS – 19 miles WSW of the fire area.

Fine Dead Fuel Moisture = 6%, 1,000 Hour Fuel Moisture = 15.9%, KBDI = 790, ERC = 31 ↓ 3

#### Fire Behavior based on values for the fuel models shown.

Vegetation	Fuel Model	Max Rate of Spread		Flame Length	
		Day	Night	Day	Night
Grass/Shrub	GS3	63 ch/hr	25 ch/hr	10½ feet	6½
Southern Rough	7	53 ch/hr	19 ch/hr	8 feet	5

Expect spotting distances of **0.2 miles**, this distance could be further if wind gusts exceed 15 mph.

Probability of Ignition Day = **55%**

Probability of Ignition Night = **10%**

In **15 minutes** a new spot fire or ignition could reach **5-8 acres daytime/1-2 acres nighttime.**

#### **Specific Areas of Concern:**

All Divisions: Areas of heavy timber and creek/swamp areas of heavy fuel. These areas can still hold heat despite the recent rains.

Div A: Watch for heat in the area below State Rd 110. With today's northerly winds any remaining heat near the line could be a potential problem.

Div F and J: Areas of heat remain in these divisions. Watch for outflow winds from nearby storms. Any pockets of green near the fire line are of concern.

Div O and W: While these division have been quiet for the past few days, there may be heat present. Keep vigilant, especially if winds pick up.

#### **AIR OPERATIONS:**

Generally good conditions for air operations, no visibility issues, unless the fire makes a run and produces a large amount of smoke.

#### **Fire Behavior Safety Message**

Heavy fuels can retain heat for extended periods of time, even after significant rainfall. Examples of heavy fuels include snags, downed logs, and stumps. Check and watch these fuels for heat, even after they seem cold.

**Division/Group Assignment List (ICS 204 WF)**  
Controlled Unclassified Information//Basic

<b>1. Incident Name:</b>			<b>3.</b>			
TIGER ISLAND			<b>Branch:</b>		<b>Division/Group</b>	
<b>2. Operational Period:</b> DAY/NIGHT					A	
Date/Time From: 08/29/2023 0700 TUE		Date/Time To: 08/29/2023 1900 TUE				
<b>4. Operations Personnel</b>						
<b>OPERATIONS CHIEF</b>		P.MYERS, J.KOLAKS (T)		<b>DIVISION/GROUP SUPERVISOR</b>		
<b>AIR ATTACK SUPERVISOR</b>						
<b>5. Resources Assigned this Period</b>						
Strike Team / Task Force / Resource Designator		LWD	Leader	Number Persons	Drop Off PT./Time	Pick Up PT./Time
ACORN FORESTRY			JASON RAINES	1		
SOFC			JOE CASTRO	1		
<b>6. Control Operations/Work Assignments:</b>						
TASK: Reinforce dozer lines along fire's edge and along previous spots. Check perimeter lines for holding integrity and begin to mop lines 100 feet interior.						
PURPOSE: Keep fire north of Hwy 110 W and existing control lines. Complete mop up to agency standards.						
END STATE: Residences and structures are protected. Fire remains within the current footprint.						
<b>7. Special Instructions:</b>						
<b>8. Division/Group Communication Summary</b>						
Function	Channel	RX Frequency N/W	RX Tone/NAC	TX Frequency N/W	TX Tone/NAC	Mode
TACTICAL	1	168.0500N	110.9	168.0500N	110.9	A
AIR TO GROUND	13	168.4000N		168.4000N		A
AIR TO GROUND	14	159.3000N	114.8	159.3000N	114.8	A
<b>9. Prepared By (Resource Unit Leader)</b>			<b>Approved By (Planning Section Chief)</b>		<b>Date</b>	<b>Time</b>
RICH AUBUCHON			KELLY RUSSELL		08/28/2023	2200



**Division/Group Assignment List (ICS 204 WF)**  
**Controlled Unclassified Information//Basic**

<b>1. Incident Name:</b>				<b>3.</b>		
TIGER ISLAND				<b>Branch:</b>	<b>Division/Group</b>  F	
<b>2. Operational Period: DAY/NIGHT</b>						
Date/Time From: 08/29/2023 0700 TUE		Date/Time To: 08/29/2023 1900 TUE				
<b>4. Operations Personnel</b>						
<b>OPERATIONS CHIEF</b>		P.MYERS, J.KOLAKS (T)		<b>DIVISION/GROUP SUPERVISOR</b>		DAVID ZUARES
<b>AIR ATTACK SUPERVISOR</b>						
<b>5. Resources Assigned this Period</b>						
Strike Team / Task Force / Resource Designator		LWD	Leader	Number Persons	Drop Off PT./Time	Pick Up PT./Time
E1 STEN GA-GAS			MATT RYMER, AUSTIN ROLAND (T)	2		
ENG6 GA-GAS			DAVID HODGES	1		
ENG6 GA-GAS			JOSEPH FINCHER	1		
ENG6 GA-GAS			FRANK REDDING	1		
ENG6 GA-GAS			KERRY PHILLIPS	1		
ENG6 GA-GAS			PATRICK FLOYD	1		
E23 STDZ SC			CHATT FOWLER	1		
E23 STDZ (T) SC			JOSHUA THOMPSON	1		
DOZ SC			GEORGE MARTIN	2		
DOZ SC			BENJAMIN JORDAN	2		
E25 STDZ SC			CLAYTON HOWARD	1		
DOZ SC			BRIAN PARNELL	1		
DOZ SC			JAMES ZELENAK	1		
E4 STDZS GA-GAS			MARCUS BEASELY	1		
DOZ2 GA-GAS			KEITH MBULO	1		
DOZ2 GA-GAS			BARRY BOHANNON	1		
SOFC			JOE CASTRO	1		
<b>8. Division/Group Communication Summary</b>						
Function	Channel	RX Frequency N/W	RX Tone/NAC	TX Frequency N/W	TX Tone/NAC	Mode
TACTICAL	2	168.2000N	110.9	168.2000N	110.9	A
AIR TO GROUND	13	168.4000N		168.4000N		A
AIR TO GROUND	14	159.3000N	114.8	159.3000N	114.8	A
<b>9. Prepared By (Resource Unit Leader)</b>			<b>Approved By (Planning Section Chief)</b>		<b>Date</b>	<b>Time</b>
RICH AUBUCHON			KELLY RUSSELL		08/28/2023	2200

**Division/Group Assignment List (ICS 204 WF)**  
Controlled Unclassified Information//Basic

<b>1. Incident Name:</b>				<b>3.</b>			
TIGER ISLAND				<b>Branch:</b>		<b>Division/Group</b>	
<b>2. Operational Period:</b> DAY/NIGHT				F			
Date/Time From: 08/29/2023 0700 TUE		Date/Time To: 08/29/2023 1900 TUE					
<b>4. Operations Personnel</b>							
<b>OPERATIONS CHIEF</b>		P.MYERS, J.KOLAKS (T)		<b>DIVISION/GROUP SUPERVISOR</b>		DAVID ZUARES	
<b>AIR ATTACK SUPERVISOR</b>							
<b>5. Resources Assigned this Period</b>							
Strike Team / Task Force / Resource Designator		LWD	Leader	Number Persons	Drop Off PT./Time	Pick Up PT./Time	
AMBULANCE LA 007			CHAD BURDEN	1			
<b>6. Control Operations/Work Assignments:</b>							
<p>TASK: Identify and establish dozer lines as direct as possible along fire's edge where needed to complete containment. Check and improve perimeter lines for holding integrity, including any hot spots from previous shift. Burn out when necessary as opportunity and resources present themselves with ops approval. Prioritize securing fire near Merryville then moving to the North and East to tie in with Division J.</p> <p>PURPOSE: Keep fire north of Frazier Rd., east of the HWY 190 corridor and south of Whiddon Rd and Shinn Rd.</p> <p>END STATE: Protection of Merryville, residences, and structures to provide the ability of residences a return to their homes.</p>							
<b>7. Special Instructions:</b>							
<b>8. Division/Group Communication Summary</b>							
Function	Channel	RX Frequency N/W	RX Tone/NAC	TX Frequency N/W	TX Tone/NAC	Mode	
TACTICAL	2	168.2000N	110.9	168.2000N	110.9	A	
AIR TO GROUND	13	168.4000N		168.4000N		A	
AIR TO GROUND	14	159.3000N	114.8	159.3000N	114.8	A	
<b>9. Prepared By (Resource Unit Leader)</b>			<b>Approved By (Planning Section Chief)</b>			<b>Date</b>	<b>Time</b>
RICH AUBUCHON			KELLY RUSSELL			08/28/2023	2200

**Division/Group Assignment List (ICS 204 WF)**  
**Controlled Unclassified Information//Basic**

<b>1. Incident Name:</b>			<b>3.</b>			
TIGER ISLAND			<b>Branch:</b>		<b>Division/Group</b>	
<b>2. Operational Period: DAY/NIGHT</b>						
Date/Time From: 08/29/2023 0700 TUE		Date/Time To: 08/29/2023 1900 TUE		J		
<b>4. Operations Personnel</b>						
<b>OPERATIONS CHIEF</b>		P.MYERS, J.KOLAKS (T)		<b>DIVISION/GROUP SUPERVISOR</b>		DAVE WALKER, JOSH HAVIRD (T)
<b>AIR ATTACK SUPERVISOR</b>						
<b>5. Resources Assigned this Period</b>						
Strike Team / Task Force / Resource Designator		LWD	Leader	Number Persons	Drop Off PT./Time	Pick Up PT./Time
ENG6 KYS			JASON HUNT	2		
ENG6 KYS			TEENA DUNN	2		
ENG6 KYS			SUSAN NIGHTINGALE	2		
ENG6 KYS			ED STEPHENS	2		
E5 STDZ GA-GAS			MARK PEEPLES	1		
E5.. DOZ3 GA-GAS			ROB MOORE	2		
E5 DOZ3 GA-GAS			CALEB MEHAGE	2		
E22 DOZ2 KYS			DEWAYNE ANDERSON	2		
SOFC		12/31	JOE CASTRO	1		
AMBULANCE LA021			CARILYN CHISHOLM	2		
<b>6. Control Operations/Work Assignments:</b>						
<p>TASK: Identify and establish all dozer lines as direct as possible. Contain fire south of Stamps Rd. and west of Shultz Rd. Burn out where necessary to improve lines and holding integrity with approval from operations. Prioritize constructing and improving line to the north and west to tie in with Division F. Begin to mop up 100 feet interior from perimeter.</p> <p>PURPOSE: Structures are protected to withstand advancing fire and progression to north and east is halted.</p> <p>END STATE: Structures protected and fire remains within the current footprint.</p>						
<b>7. Special Instructions:</b>						
<b>8. Division/Group Communication Summary</b>						
Function	Channel	RX Frequency N/W	RX Tone/NAC	TX Frequency N/W	TX Tone/NAC	Mode
TACTICAL	3	168.6000N	110.9	168.6000N	110.9	A
AIR TO GROUND	13	168.4000N		168.4000N		A
AIR TO GROUND	14	159.3000N	114.8	159.3000N	114.8	A
<b>9. Prepared By (Resource Unit Leader)</b>			<b>Approved By (Planning Section Chief)</b>		<b>Date</b>	<b>Time</b>
RICH AUBUCHON			KELLY RUSSELL		08/28/2023	2200

**Division/Group Assignment List (ICS 204 WF)**  
**Controlled Unclassified Information//Basic**

<b>1. Incident Name:</b>			<b>3.</b>			
TIGER ISLAND			<b>Branch:</b>		<b>Division/Group</b>	
<b>2. Operational Period: DAY/NIGHT</b>			<b>O/W</b>			
Date/Time From: 08/29/2023 0700 TUE		Date/Time To: 08/29/2023 1900 TUE				
<b>4. Operations Personnel</b>						
<b>OPERATIONS CHIEF</b>		P.MYERS, J.KOLAKS (T)		<b>DIVISION/GROUP SUPERVISOR</b>		LISA LONCAR GREG TITUS (T)
<b>AIR ATTACK SUPERVISOR</b>						
<b>5. Resources Assigned this Period</b>						
Strike Team / Task Force / Resource Designator		LWD	Leader	Number Persons	Drop Off PT./Time	Pick Up PT./Time
STDZ NAT GUARD			CAPTAIN LEWIS	1		
DOZ1 NAT GUARD				2		
DOZ1 NAT GUARD				3		
DOZ1 NAT GUARD				3		
DOZ1 NAT GUARD				3		
AMBULANCE LA 021			PARRISH WALLACE	1		
<b>6. Control Operations/Work Assignments:</b>						
<p>TASK: Identify and establish all dozer lines as direct as possible. Contain fire south of Neale Oilfield Rd west of Persimmon Marsh and west of Hwy 27.          Burn out where necessary to improve lines and holding integrity with approval from operations. Prioritize constructing and improving line to the south to tie in with Division A.          Begin to mop up 100 feet interior from perimeter.</p> <p>PURPOSE: Structures are protected to withstand advancing fire and progression to north and east is halted.</p> <p>END STATE: Structures protected and fire remains within the current footprint.</p>						
<b>7. Special Instructions:</b>						
<b>8. Division/Group Communication Summary</b>						
Function	Channel	RX Frequency N/W	RX Tone/NAC	TX Frequency N/W	TX Tone/NAC	Mode
TACTICAL	4	166.7250N	110.9	166.7250N	110.9	A
AIR TO GROUND	13	168.4000N		168.4000N		A
AIR TO GROUND	14	159.3000N	114.8	159.3000N	114.8	A
<b>9. Prepared By (Resource Unit Leader)</b>			<b>Approved By (Planning Section Chief)</b>		<b>Date</b>	<b>Time</b>
RICH AUBUCHON			KELLY RUSSELL		08/28/2023	2200

**Division/Group Assignment List (ICS 204 WF)**  
**Controlled Unclassified Information//Basic**

<b>1. Incident Name:</b>			<b>3.</b>			
TIGER ISLAND			<b>Branch:</b>		<b>Division/Group</b>	
<b>2. Operational Period:</b> DAY/NIGHT					<b>LDAF DOZER GROUP</b>	
Date/Time From: 08/29/2023 0700 TUE		Date/Time To: 08/29/2023 1900 TUE				
<b>4. Operations Personnel</b>						
<b>OPERATIONS CHIEF</b>		P.MYERS, J.KOLAKS (T)		<b>DIVISION/GROUP SUPERVISOR</b>		JEFF ANDERS
<b>AIR ATTACK SUPERVISOR</b>						
<b>5. Resources Assigned this Period</b>						
Strike Team / Task Force / Resource Designator		LWD	Leader	Number Persons	Drop Off PT./Time	Pick Up PT./Time
DOZ LADF			JOHN NORMAN	3		
DOZ LADF			MATT CANNON	3		
DOZ LADF			FISHER GARDNER	3		
DOZ LADF			CRAIG HONEYCUTT	3		
DOZ LADF			RALFH WOODS	3		
SOFC			JOE CASTRO	1		
<b>6. Control Operations/Work Assignments:</b>						
TASK: Engage in high priority areas within Tiger Island Fire or initial attack as directed from operations.						
PURPOSE: Provide surge resources as needed to complete critical tasks.						
END STATE: Critical suppression objectives are complete.						
<b>7. Special Instructions:</b>						
<b>8. Division/Group Communication Summary</b>						
Function	Channel	RX Frequency N/W	RX Tone/NAC	TX Frequency N/W	TX Tone/NAC	Mode
COMMAND						
TACTICAL	9	154.2800N	156.7	154.2800N	156.7	A
LOGISTICS						
AIR TO GROUND						
<b>9. Prepared By (Resource Unit Leader)</b>			<b>Approved By (Planning Section Chief)</b>		<b>Date</b>	<b>Time</b>
RICH AUBUCHON			KELLY RUSSELL		08/28/2023	2200


**Division/Group Assignment List (ICS 204 WF)**  
**Controlled Unclassified Information//Basic**

<b>1. Incident Name:</b>			<b>3.</b>			
TIGER ISLAND			<b>Branch:</b>		<b>Division/Group</b>	
<b>2. Operational Period:</b> DAY/NIGHT			<b>STRUCTURE GROUP</b>			
Date/Time From: 08/29/2023 0700 TUE		Date/Time To: 08/29/2023 1900 TUE				
<b>4. Operations Personnel</b>						
<b>OPERATIONS CHIEF</b>		P.MYERS, J.KOLAKS (T)		<b>DIVISION/GROUP SUPERVISOR</b>		CRAIG ROBERTSON
<b>AIR ATTACK SUPERVISOR</b>						
<b>5. Resources Assigned this Period</b>						
Strike Team / Task Force / Resource Designator		LWD	Leader	Number Persons	Drop Off PT./Time	Pick Up PT./Time
SOFC			JOE CASTRO	1		
<b>6. Control Operations/Work Assignments:</b>						
Working in coordination with local and state fire departments.						
<b>7. Special Instructions:</b>						
Coordinate with LA IST Resources. Support division structure needs.						
<b>8. Division/Group Communication Summary</b>						
Function	Channel	RX Frequency N/W	RX Tone/NAC	TX Frequency N/W	TX Tone/NAC	Mode
TACTICAL	5	166.7750N	110.9	166.7750N	110.9	A
AIR TO GROUND	13	168.4000N		168.4000N		A
AIR TO GROUND	14	159.3000N	114.8	159.3000N	114.8	A
<b>9. Prepared By (Resource Unit Leader)</b>			<b>Approved By (Planning Section Chief)</b>		<b>Date</b>	<b>Time</b>
RICH AUBUCHON			KELLY RUSSELL		08/28/2023	2200

**Division/Group Assignment List (ICS 204 WF)**  
**Controlled Unclassified Information//Basic**

<b>1. Incident Name:</b>			<b>3.</b>			
TIGER ISLAND			<b>Branch:</b>		<b>Division/Group</b>	
<b>2. Operational Period:</b> DAY/NIGHT			NIGHT			
Date/Time From: 08/29/2023 0700 TUE		Date/Time To: 08/29/2023 1900 TUE				
<b>4. Operations Personnel</b>						
<b>OPERATIONS CHIEF</b>		MARK JAMIESON		<b>DIVISION/GROUP SUPERVISOR</b>		
<b>AIR ATTACK SUPERVISOR</b>						
<b>5. Resources Assigned this Period</b>						
Strike Team / Task Force / Resource Designator		LWD	Leader	Number Persons	Drop Off PT./Time	Pick Up PT./Time
E24 STDZ SC			WILLIAM PRESSLEY	1		
DOZ SC			BUCK NEWCOMB	1		
DOZ SC			RUSSELL HALE	1		
STDZ GA-GAS			KEN WELLS	1		
DOZ GA-GAS			EVAN HYERS	1		
DOZ GA-GAS			BLAIR KIRKSEY	1		
DIVS LA-IST			LEE DRAGO	1		
TSKF 153 LA-IST			SEAN MCCORMICK	13		
TASKF 110 LA-IST			TBD	13		
SOFC			TOMMY HAWKINS	1		
AMBULANCE 013			JESSICA TRICHEL	1		
AMBULANCE LA 010			KARL MANN	1		
<b>6. Control Operations/Work Assignments:</b>						
<p>TASK: Assess and engage resources as needed along perimeter to safely contain the fire line. Utilize LA State resources to assist in protecting resources and provide identified structure protection needs.</p> <p>PURPOSE: Maintain current fire boundaries.</p> <p>END STATE: Residences, structures are protected and fire remains within the current footprint.</p> <p>LA-State employ spotters to maintain personell accountability. Always position resources for rapid egress.</p>						
<b>7. Special Instructions:</b>						
<b>8. Division/Group Communication Summary</b>						
Function	Channel	RX Frequency N/W	RX Tone/NAC	TX Frequency N/W	TX Tone/NAC	Mode
TACTICAL	1	168.0500N	110.9	168.0500N	110.9	A
AIR TO GROUND	13	168.4000N		168.4000N		A
AIR TO GROUND	14	159.3000N	114.8	159.3000N	114.8	A
<b>9. Prepared By (Resource Unit Leader)</b>			<b>Approved By (Planning Section Chief)</b>		<b>Date</b>	<b>Time</b>
RICH AUBUCHON			KELLY RUSSELL		08/28/2023	2200

<b>AIR OPERATIONS SUMMARY 220</b>	Prepared By: Darlene Hall	Prepared: 8/28/23	Prepared Time: 1500
<b>1. INCIDENT NAME: TIGER ISLAND FIRE</b>	<b>2. OPERATIONAL PERIOD</b> 8/29/23	<b>START TIME:</b> 0700	<b>END TIME:</b> 2100
		<b>SUNRISE:</b> 0:648	<b>SUNSET:</b> 19:41

<p><b>3. REMARKS:</b></p> <p>All Aircraft <b><i>DO NOT</i></b> go near TFR 3/1658 just north of Leesville. This is a State TFR based on a Methane Gas / Oil Well Hazard.</p> <p><b>AVIATION SAFETY IS A TEAM EFFORT</b></p> <p>ALL MISSIONS WILL BE ANALYZED IN TERMS OF HAZARDS AND RISKS</p> <ul style="list-style-type: none"> <li>THE RISK ASSESSMENT IS AN OPEN PROCESS WELCOMING INPUT.</li> <li>HAZARDS WILL BE MITIGATED; RISK WILL BE REDUCED.</li> </ul> <p><b>IF A MISSION FEELS UNSAFE, IDENTIFY SAFE ALTERNATIVES!</b></p> <p><b>***Visibility and winds, have been a safety issue.***</b></p>	<p><b>4. READY ALERT AIRCRAFT:</b></p> <p>Medivac: See Medical Plan IWI</p>	<p><b>5. TFR: 3/1554</b></p> <p>9 NM Center 30°41'40"N / 93°27'00"W Surface-6000' AMSL</p> 
---	---	--

6. PERSONNEL	NAME	PHONE #	7. FREQUENCIES	AM	FM	8A. FIXED-WING Ordering
AOBD	Darlene Hall	530-228-6004 Darlene_Hall@firenet.gov				AA-5DT: order thru LICC for coverage Bravo Units available from AEX thru LICC
ASGS-T	Clint Davis	479-243-8648 Pineknot03@hotmail.com	A/A	120.600		8B. Air Attack currently ordered for coverage thru Pineville Dispatch
HEBM	Jake Pastoruis	406-459-4558	A/A Secondary	134.975	168.400	REMARKS: DIV contact Military AC on Inner Ops State 3 Radio
			A/G Primary		159.300 (S) T-114.8	4-6 Guard ships available through Air Ops/Air Support To be assigned to a division.
			A/G Secondary		168.625 (S) T-110.9	In time of No Aerial Supervision a virtual fence will be identified and put into place to separate Military Operation from Contract Aircraft
			Air Guard			

**9. HELICOPTERS:** (Order through ATGS or Operations)

FAA N#	TY	MAKE/MODEL	BASE	START	AVAIL	REMARKS	FAA N#	TY	MAKE/MODEL	BASE	START	AVAIL	REMARKS
OMB	1	KMax	DRI	0700	0800	Water Drops							
8MG	3	AS350 (B-3)	DRI	0700	0800	Recon, Water, Other							



## Controlled Unclassified Information/Basic

**ICS 205**

<b>INCIDENT RADIO COMMUNICATIONS PLAN</b>				Incident Name <b>TIGER ISLAND FIRE</b>		Date/Time Prepared: <b>AUGUST 28, 2023 1800 HRS</b>		Operational Period Date/Time From: <b>8/29/23 0700 HRS</b> To: <b>08/30/23 0700 HRS</b>			
Ch #	Function	Channel Name/Trunked Radio System Talkgroup	Assignment	RX Freq	N or W	RX Tone/NAC	TX Freq	N or W	Tx Tone/NAC	Mode	Remarks
1	TAC	TAC 1	DIV ANIGHT	168.0500N		110.9	168.0500N		110.9	A	
2	TAC	TAC 2	DIV F	168.2000N		110.9	168.2000N		110.9	A	
3	TAC	TAC 3	DIV J	168.6000N		110.9	168.6000N		110.9	A	
4	TAC	TAC 4	DIV OW	166.7250N		110.9	166.7250N		110.9	A	
5	TAC	TAC 5	STRUCTURE GROUP	166.7750N		110.9	166.7750N		110.9	A	
6											
7	TAC	D4 WEST TALK	ALL DIVS	151.3700N		110.9	151.3700N		110.9	A	
8	TAC	WEST FIRE 1	ALL DIVS	151.4000N		110.9	151.4000N		110.9	A	
9	TAC	VFIRE 21	ALL DIVS	154.2800N		156.7	154.2800N		156.7	A	
10											
11											
12											
13	AIR TO GROUND	A/G PRI	A/G PRIMARY	168.4000N			168.4000N			A	
14	AIR TO GROUND	A/G SEC	A/G SECONDARY	159.3000N		114.8	159.3000N		114.8	A	
15											
16	AIR GUARD	AIRGUARD	ALL	168.6250N		110.9	168.6250N		110.9	A	Air Guard
5. Prepared by (Communications Unit) Jerry W Patrick, COM1				Incident Location: TIGER ICP County/State LA				Latitude / Longitude: ° / °			

**The convention calls for frequency lists to show four digits after the decimal place, followed by either an "N" or a "W", depending on whether the frequency is narrow or wide band. Mode refers to either "A" or "D" indicating analog or digital (Project 25).**

**\*\*\* Special Instructions: Use Human Repeater When Necessary.**

# SAFETY MESSAGE

## SAFETY THOUGHT FOR TODAY

“The danger which is least expected soonest comes to us.”—Voltaire

### **WILDLAND/URBAN INTERFACE WATCHOUTS**

The primary consideration is to first assure firefighter and public safety. It is a must to assess potential fire behavior, ingress/egress routes, nature of the threat, hazardous materials, and available water supplies before engaging in the protection of any structures. The first step in conducting a safe operation is to assess whether the firefighting operations can be conducted safely.

Consider the “Wildland/Urban Interface Watchouts” in completing a risk analysis for the urban interface area to be protected. Remember there are three categories of structures:

- Those that are not threatened.
- Those that are threatened.
- Those that have already been lost or are too dangerous to protect.

#### **Wildland/Urban Interface Watchouts:**

- Poor access and narrow, one-way roads. A rapidly spreading fire could trap apparatus and personnel before they can turn around or move away from the flames and smoke.
- Observe bridge limits. Exceeding bridge limits could lead to bridge failure with a resultant blocking of ingress/egress routes that could result in the loss of an escape route or loss of equipment.
- Inadequate water supply. Without a reserve supply of water, the fire can overtake an area before the fuels can be cleared away.
- Natural fuels are located 30 feet or closer to structures on level ground. Remember structures on slopes require greater clearance. Structures are located on canyon slopes or “chimneys” on slopes of 30% or more with continuous, flashy fuels. The resulting rate of spread of any fire in this terrain can quickly extend beyond control.

Extreme fire behavior: Situations involving crowning, large flame heights and erratic fire behavior can extend in an unpredictable manner beyond the control of any number of personnel. Strong winds of 15+ MPH: Winds increase the chance of spotting over the heads of firefighters and trapping them between both fire areas. Winds also cause greater preheating of fuels in the path of a fire front.

- The need to evacuate the public, livestock, pets, and/or animals. This critical activity can pull personnel from the firefighting activity and can distract attention from fire behavior at a time when the greatest alertness is needed.
- Propane and above ground fuel tanks that are next to wooden structures or close to vegetation
- Power lines and poles: What is their location in relation to the structures that are being protected? Watch for both overhead and downed power lines.
- Local citizens are attempting suppression activities. Lack of knowledge in fire suppression may lead to unsafe tactics.
- Airtanker retardant drops and helicopter bucket operations: Establish communications and keep fire personnel out of the drop zone.

**Safety Officers:** Brad Lidell, Tommy Hawkings, Joe Castro, Jason Rose

# FINANCE

## Finance Processes:

- **If you are an AD**, we need a copy of your **Casual Hire form & Resource Order**.
- **If you are a Cooperator or Contractor**, we need a copy of your **Agreement/Contract and Resource Order**.
- **All Contract/Cooperator Equipment** needs to have a **Pre-Use Inspection form**.
- **If you are a Crew**, we need a copy of your **Manifest** as well as the documents mentioned above.
- **If you are an Overhead Resource**, we need a copy of your Resource Order.

**ALL: Please email your CTRs, Shift Tickets and any of the documents mentioned above as a PDF or JPEG to: [2023.tigerisland.finance@firenet.gov](mailto:2023.tigerisland.finance@firenet.gov)**

**In the SUBJECT LINE put OVERHEAD with O# or EQUIPMENT with E# to help identify the content in the email.**

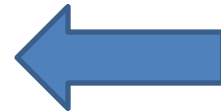


### Finance Fire Codes

FWS Code: FFF2500000QK8T0

NPS Code: PP.FSQK8TD23.00.1

USFS code: (1522) PNQK8T



The finance staff will attend all briefings in case you have any questions or need assistance in submitting your information!

# Training Message

## *ALL* Trainees:

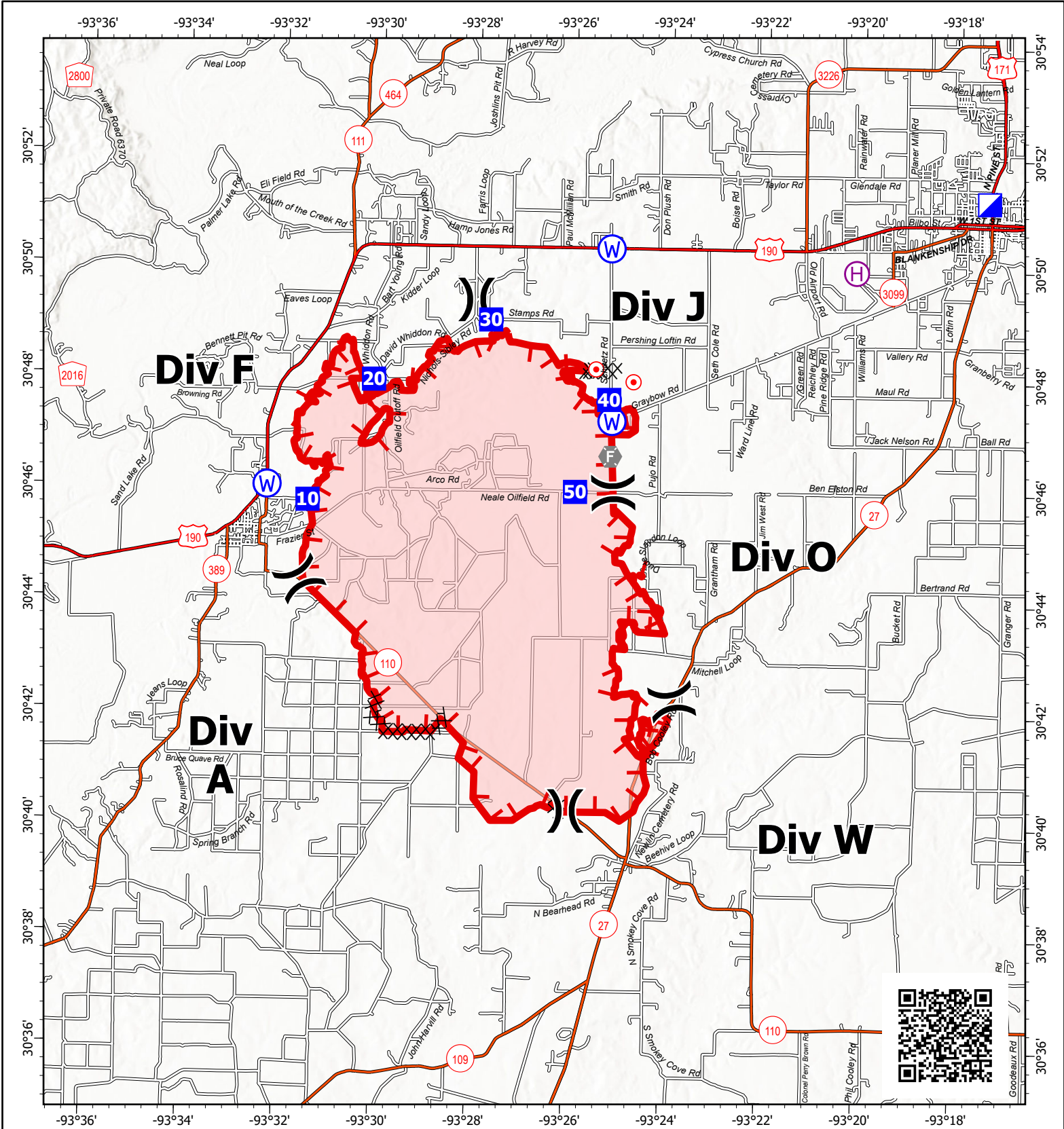
If you are a trainee on the Tiger Island Fire, be sure to check in with the Training Specialist. Bring your Task Book, your red card, your Order #, and your coach/evaluator to the Training Specialist by the Check-In table inside the front door in the ICP.

I will be available throughout the day to answer any training questions you may have.

Greg Seamon  
Training Specialist  
08/28/2023

# Tiger Island ICP Map





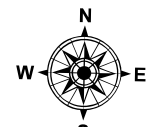
# IAP Map

## Tiger Island

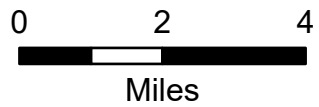
### LA-LAS-000252

#### 08/29/2023

33,294 acres at August 27, 2023 1254



- Helibase
- Division Break
- Incident Command Post
- Drop Point
- Hot Spot - Spot Fire
- Fire Station
- Water Source
- Completed Dozer Line
- Uncontained
- Wildfire Daily Fire Perimeter



1:170,000 | SA Red Team GIS | 8/28/2023 1830  
Acres from IR and GPS  
North American 1983 Datum. LatLong Grid







# MEDICAL PLAN (ICS 206 WF)

Controlled Unclassified Information//Basic

<b>1. Incident/Project Name</b>				<b>2. Operational Period</b>				
Tiger Island				08/29/23 - 08/30/23				
<b>2. Medical Aid Stations</b>								
<b>Medical Aid Stations</b>			<b>Location</b>			<b>Advanced Life Support (ALS)</b>		
						Yes	No	
<b>3. Ambulance Services</b>								
<b>Name</b>		<b>Location</b>		<b>Phone</b>		<b>Advanced Life Support (ALS)</b>		
						Yes	No	
LA 007		Day - Division F		(337) 660-5990		X		
LA 018		Day - Division O				X		
LA 021		Day - Division J				X		
LA 013		Night Division		(318) 548-0349		X		
LA 010		Night Division		(318) 458-3606		X		
Local EMS		<i>For emergencies outside of incident</i>		911		X		
<b>4. Air Ambulance Services</b>								
<b>Name</b>		<b>Location, Capabilities</b>				<b>Advanced Life Support (ALS)</b>		
						Yes	No	
Coast Guard New Orleans Sector (504) 589-6225		2-2.5 hr response time Hoist, Night Vision, BLS Houston or New Orleans					X	
Acadian Air Med (337) 291-1594		Woodworth, LA Lat/Long 31° 05.820', -92° 17.694'				X		
Acadian Air Med (337) 291-1594		Lake Charles Regional Airport Lat/Long 30° 04.404', -93° 08.502'				X		
<b>5. Hospitals</b>								
<b>Name/Address</b>	<b>GPS Datum – WGS 84 Coordinate Standard</b>		<b>Travel Time Air Gnd</b>		<b>Phone</b>	<b>Helipad Yes No</b>		<b>Level of Care Facility</b>
Ochsner LSU Health Shreveport 1541 Kings Highway Shreveport, LA 71103	<b>Lat:</b>	32° 29.724',	40 min	113 min	(318) 626-0000	X		L1 Trauma, STEMI, Stroke, Burn Center
	<b>Long:</b>	-93° 45.000'						
Byrd Regional Hospital 1020 Fertitta Blvd. Leesville, LA 71446	<b>Lat:</b>	35° 54.303'	20 min	40 min	(337) 239-9041	X		Stroke Center
	<b>Long:</b>	-79° 3.041'						
Rapides Regional Medical 211 4th St Alexandria, LA 71301	<b>Lat:</b>	34° 43.566'	30 min	105 min	(318) 769-3000	X		L2 Trauma, STEMI
	<b>Long:</b>	-76° 45.307'						
University Medical Center 2000 Canal St. New Orleans, LA 70112	<b>Lat:</b>	29° 57.561'	100 min	4 hrs	(504) 702-3000	X		L1 Trauma, STEMI, Stroke, Burn Center
	<b>Long:</b>	-90° 4.964'						
<b>6. Clinics</b>								
Outpatient Medical Center	908 S 10th St Suite B, Leesville, LA (337) 238-1274 (0800-1800 Mon, Tue, Thu; 0800-1700 Wed; 0800-1300 Fri)							
QTC Medical Group	802 S 10th St C, Leesville, LA (337) 238-4189 (0800-1700 Mon-Fri)							

<b>8. Prepared By (Medical Unit Leader)</b>		<b>9. Date/Time</b>		<b>10. Reviewed by (Safety Officer)</b>		
Fred Adler, MEDL (479) 238-6064 Nick Arnett, MEDL (408) 888-1900		8/28/2023		Brad Lidell, SOFC		

## IWI IC Responsibilities – Division Group Supervisor or Point of Contact

- Take charge of the scene. Call ambulance number above (note different numbers for day v. night), establish communications with Division Supervisor or Branch Director.
- If air evacuation or in event of critical injuries or illness, Branch Director will notify Operations Section Chief, who will notify the IC.
- Assign or begin patient assessment (Medical Incident Report - MIR) and first aid. Request additional medical resources on division/branch or across incident.
- Determine patient transportation through consultation with ambulance. Consider transportation time, risk to personnel, destination facility and available operational resources. If air transport is chosen, implement a plan for alternative transportation in the event aircraft cannot complete the mission; order alternate transportation resources through Branch Director as early as possible.
- Notify Branch Director as resources arrive and any patient status changes. Names of injured or deceased individuals will not be transmitted on the radio.
- Initiate documentation for future investigation; if a line safety officer is available, assign them to lead documentation. Do not move deceased individuals, gear or personal effects except to accomplish rescue work or protect the safety of others. Obtain written documentation of witnesses. The Unit Log, ICS 214, may be used for the initial documentation, but a subsequent narrative will be required.
- As appropriate, conduct an After Action Review to determine successes, areas to improve and lessons learned

# MEDICAL PLAN (ICS 206 WF)

Controlled Unclassified Information//Basic

## Medical Incident Report

**FOR A NON-EMERGENCY INCIDENT, WORK THROUGH CHAIN OF COMMAND TO REPORT AND TRANSPORT INJURED PERSONNEL AS NECESSARY.**

**FOR A MEDICAL EMERGENCY: IDENTIFY ON-SCENE INCIDENT COMMANDER BY NAME AND POSITION AND ANNOUNCE "MEDICAL EMERGENCY" TO INITIATE RESPONSE FROM IMT COMMUNICATIONS/DISPATCH.**

**Use the following items to communicate situation to communications/dispatch.**

**1. CONTACT COMMUNICATIONS / DISPATCH** (Verify correct frequency prior to starting report)

*Ex: "Communications, Div. Alpha. Stand-by for Emergency Traffic."*

**2. INCIDENT STATUS:** Provide incident summary (including number of patients) and command structure.

*Ex: "Communications, I have a Red priority patient, unconscious, struck by a falling tree. Requesting air ambulance to Forest Road 1 at (Lat./Long.) This will be the Trout Meadow Medical, IC is TFLD Jones. EMT Smith is providing medical care."*

Severity of Emergency / Transport Priority	<input type="checkbox"/> <b>RED / PRIORITY 1 Life or limb threatening injury or illness. Evacuation need is IMMEDIATE</b> <i>Ex: Unconscious, difficulty breathing, bleeding severely, 2° – 3° burns more than 4 palm sizes, heat stroke, disoriented.</i> <input type="checkbox"/> <b>YELLOW / PRIORITY 2 Serious Injury or illness. Evacuation may be DELAYED if necessary.</b> <i>Ex: Significant trauma, unable to walk, 2° – 3° burns not more than 1-3 palm sizes.</i> <input type="checkbox"/> <b>GREEN / PRIORITY 3 Minor Injury or illness. Non-Emergency transport</b> <i>Ex: Sprains, strains, minor heat-related illness.</i>	
Nature of Injury or Illness & Mechanism of Injury		<i>Brief Summary of Injury or Illness (Ex: Unconscious, Struck by Falling Tree)</i>
Evacuation Request		<i>Air Ambulance / Short Haul/Hoist Ground Ambulance / Other</i>
Patient Location		<i>Descriptive Location &amp; Lat. / Long. (WGS84)</i>
Incident Name		<i>Geographic Name + Medical (Ex: Trout Meadow Medical)</i>
On-Scene Incident Commander		<i>Name of on-scene IC of Incident within an Incident (Ex: TFLD Jones)</i>
Patient Care		<i>Name of Care Provider (Ex: EMT Smith)</i>

**3. INITIAL PATIENT ASSESSMENT:** Complete this section for each patient as applicable (start with the most severe patient)

Patient Assessment: See IRPG PAGE 106

Treatment:

**4. EVACUATION PLAN:**

Evacuation Location (if different): (Descriptive Location (drop point, intersection, etc.) or Lat. / Long.) Patient's ETA to Evacuation Location:

Helispot / Extraction Site Size and Hazards:

**5. ADDITIONAL RESOURCES / EQUIPMENT NEEDS:**

*Example: Paramedic/EMT, crews, immobilization devices, AED, oxygen, trauma bag, IV/fluid(s), splints, rope rescue, wheeled litter, HAZMAT, extrication*

**6. COMMUNICATIONS: Identify State Air/Ground EMS Frequencies and Hospital Contacts as applicable**

Function	Channel Name/Number	Receive (RX)	Tone/NAC *	Transmit (TX)	Tone/NAC *
COMMAND					
AIR-TO-GRND					
TACTICAL					

**7. CONTINGENCY: Considerations:** If primary options fail, what actions can be implemented in conjunction with primary evacuation method? Be thinking ahead..

**8. ADDITIONAL INFORMATION:** Updates/Changes, etc.

**REMEMBER:** Confirm ETAs of resources ordered. Act according to your level of training. Be Alert. Keep Calm. Think Clearly. Act Decisively.