

Tiger Island Fire

LA-LAS-000252

IAP

August 30, 2023 – Day Shift

August 30-31, 2023 – Night Shift



Link to Tiger Island Maps

Finance/Time: 2023.tigerisland.finance@firenet.gov

Plans: 2023.tigerisland.plans@firenet.gov

Demob: 2023.tigerisland.demob@firenet.gov

PIO: 2023.tigerisland@firenet.gov - 318-239-9263

Text photos to: 912-286-3110

[Tiger Island Inciweb](#)

[Facebook@TigerIslandFire](#)

INCIDENT OBJECTIVES (ICS 202)

1. Incident Name:	2. Operational Period: DAY	
TIGER ISLAND	Date/Time From: 08/30/2023 0700 WED	Date/Time To: 08/31/2023 0700 THUR
3. Objective(s):		
<ol style="list-style-type: none"> 1. All operations will be conducted with safety of the public and firefighters in mind. Protection of life and property is your highest priority task. When in doubt, sacrifice acres rather than firefighter and public safety. 2. Provide public information regarding fire danger to maintain good awareness of the risk and hazards to the public. Coordinate with LDAF Public Information Officer at (225) 975-7532 or presssecretary@ldaf.la.gov and State Fire Marshal's Public Affairs Director at (225) 620-5115 or ashley.rodrique@la.gov. 3. Manage the human resources assigned to fire incident in a manner that promotes mutual respect and is consistent with interagency human resource objectives. The team will handle EEO complaints in consultation with LDAF Human Resources involving personnel attached to the team. 4. Continue partnership and coordination with the appropriate LDAF, State Fire Marshall, GOHSEP, and local public safety officials. 5. Manage incident in a cost effective manner. 		
4. Operational Period Command Emphasis:		
<p>Stop, Think, Discuss then Act, and ensure LCES is in place prior to engaging the fire. The Tiger Island Fire receives a strategic, risk-based response, commensurate with the threats and opportunities, and uses the full spectrum of management actions, that consider fire and fuel conditions, weather, values at risk, and resources available.</p>		
General Situational Awareness:		
<p>Watch Out Situations: Extreme heat, dry fuels and fire behavior. Aviation use and possible long medivac times. Cumulative fatigue.</p>		
5. Site Safety Plan Required? Yes <input type="checkbox"/> No <input checked="" type="checkbox"/>		
Approved Site Safety Plan(s) Located		
6. Incident Action Plan (the items checked below are included in this Incident Action Plan):		
<input type="checkbox"/> ICS 202 <input type="checkbox"/> ICS 203 <input type="checkbox"/> ICS 204 <input type="checkbox"/> ICS 205 <input type="checkbox"/> ICS 205A <input type="checkbox"/> ICS 206	<input type="checkbox"/> ICS 207 <input type="checkbox"/> ICS 208 <input type="checkbox"/> ICS 220 <input type="checkbox"/> Map/Chart <input type="checkbox"/> Weather Forecast/Tides/Currents	Other Attachments: <input type="checkbox"/> _____ <input type="checkbox"/> _____ <input type="checkbox"/> _____ <input type="checkbox"/> _____
7. Prepared by: KELLY RUSSELL	Position/Title: PSCC	Signature:
8. Approved by Incident Commander:	Name:	Signature:
ICS 202	IAP Page	Date/Time:

ORGANIZATION ASSIGNMENT LIST (ICS 203)

1. Incident Name:		2. Operational Period: DAY	
TIGER ISLAND		Date/Time From: 08/30/2023 0700	WED
		Date/Time To: 08/31/2023 0700	THUR
3. Incident Commander(s) and Command Staff:		DIRECTOR	
IC/UC	STEVE PARRISH	COMMUNICATIONS UNIT	JERRY PATRICK; BARRY STEARNS
DEPUTY	PAT PEARSON	MEDICAL UNIT	NICK ARNETT, FRED ADLER
IC/UC	JAY MICKEY (T)	FOOD UNIT	DAVID MALONE
SAFETY OFFICER	B.LIDELL, T.HAWKINS, J.CASTRO, J.ROSE (T), E.BRATCHER (T)	7. Operations Section:	
INFORMATION OFFICER	B.STRAWSER, S.HEISEY	DAY OPS SECTION CHIEF	SHANE STURGILL
LIAISON OFFICER	SUSAN MILLER BRADLEY WRIGHT (T)	NIGHT OPS SECTION CHIEF	MARK JAMIESON
4. Agency/Organization Representative(s):		PLANNING OPS	T.FLOYD, V.EDGE
Agency/Organization	Name	FIELD OPS	P.MYERS, J.KOLAKS (T)
LDAF	WADE DUBEA STATE FORESTER	DIVISION/GROUP	A UNSTAFFED
LDAF	MATT POLK CHIEF, MARK DAVIS	DIVISION/GROUP	F DAVID ZUARES JAKE GUADIANA (T)
SE COMPACT	DARYL JONES	DIVISION/GROUP	J DAVID WALKER, JOSH HAVIRD (T)
NATIONAL GUARD	COL SCOTT SLAVEN	DIVISION/GROUP	O/W LISA LONCAR GREG TITUS (T)
GOHSEP	TODD SMITH, AMY MICHAELS	DIVISION/GROUP	STRUCTURE GROUP CRAIG ROBERTSON
FIRE MARSHAL	R.SHOULTZ, C.ROBERSON	DIVISION/GROUP	LDAF DOZER GROUP JEFF ANDERS
5. Planning Section:		DIVISION/GROUP	NIGHT UNSTAFFED
CHIEF	KELLY RUSSELL MARG OLSON	7b. Air Operations Branch:	
RESOURCES UNIT	RICH AUBUCHON	AIR OPS BRANCH DIRECTOR	DARLENE HALL
SITUATION UNIT	ERIC SCHMECKPEPPER MICHAEL DOUCET (T)	AIR SUPPORT SUPERVISOR	CLINT DAVIS (T)
DEMOBILIZATION UNIT	DONNA THOMAS (V)	8. Finance/Administration Section:	
FIRE BEHAVIOR ANALYST	ALLISON COONS	CHIEF	SANDRA MORRIS KRISTIE BOWEN (T)
TRAINING SPECIALIST	GREG SEAMON	DEPUTY	JAMES MEREDITH
GIS SPECIALIST	T.BARNES, A.POOLE (T) M. HAUNSPERGER, M. DISKIN (V)	TIME UNIT	CATHERINE FARLEY
TECHNOLOGY SUPPORT SPECIALIST	JOE ASHBY TONY FARMER	PROCUREMENT UNIT	
INCIDENT METEOROLOGIST	JEREMY MICHAEL	COMPENSATION UNIT	
AIR SPECIALIST	LINDA CHAPPELL STEVE PAES (T)	COST UNIT	
6. Logistics Section:			
CHIEF	CHRIS REVELS		
DEPUTY	SALLY BROWNING		
SUPPORT BRANCH			
DIRECTOR	JOE WALKER		
SUPPLY UNIT	NINA DONLEY-RIVERS		
FACILITIES UNIT	SUSANNE ADAMS		
GROUND SUPPORT UNIT	ROBERT JOHNSON		
SERVICE BRANCH			
9. Prepared By:	Name: KELLY RUSSELL	Position/Title: PSCC	Signature:
ICS 203	IAP Page	Date/Time: 08/29/2023 1700	



To: All Incident Personnel, Tiger Island Fire

As Southern Area National Type I Incident Commander, I am committed to a policy of “zero tolerance” of inappropriate behavior during incident operations. Any form of harassment, discriminatory practices, or disrespectful behavior will not be tolerated. Known or reported acts will be dealt with appropriately.

I am particularly concerned about the perception that alcohol has a place in any of the Incident facilities. It is not appropriate to indulge in alcoholic beverages during any fire assignment.

The Southern Area Red Team has a policy of “NO ALCOHOL” from the time of dispatch until the time of physical release from the Incident. Members of the Team voluntarily comply with this policy; all incident personnel will be expected to do so also.

We endorse, support, and expect an attitude of mutual respect for all Incident personnel and the public we serve. We also, endorse the attitude and work ethic that places “Safety First, every time on every Incident.” We expect nothing less.

/s/Steve Parrish

Incident Commander

SA Red Team



Fire Weather Forecast

FORECAST NO: 03
PREDICTION FOR: Wednesday and Wed Night
DATE: August 30th, 2023
FORECAST ISSUED: 1800 August 29th, 2023

Fire: Tiger Island
UNIT: LA-LAS-000252
Incident Meteorologist: *Jeremy Michael*
Signed: JRM (304-886-2331)

WEATHER DISCUSSION:

*****RED FLAG WARNING 10 AM to 8 PM *****

A Red Flag Warning is in effect from 10 AM until 8 PM for hot, very dry, and wind gusts up to 25 mph. RH will likely drop into the teens, which is rare for Louisiana in August as Extreme and Exceptional drought remains. Tonight, RH recovery will be poor as offshore winds keep RH in the 55-65% range. Thursday will be similar as another Red Flag Warning is expected, which could be reissued for Friday as the hot, dry, and breezy weather continues. As we head into the weekend, onshore flow will raise afternoon RHs and bring back excellent RH recoveries. Additionally, showers and storms will become increasingly likely which could bring wetting rains to some portions of the region.

TODAY:

WEATHER: Sunny and hot. *****RED FLAG WARNING 10 AM to 8 PM *****
MAX TEMP: 96-99° **HEAT INDEX:** 96-99° **MIN RH:** 18-23%
PROBABILITY OF PRECIP: 0% **CHC WTG RAIN:** 0% **LAL:** 1
WINDS (20 feet): N 10-15 mph with gusts up to 25 mph.
MIXING HEIGHT: Weak morning inversion. 8,000-9,000 ft during the afternoon.
TRANSPORT WIND: N 15-20 mph.

TONIGHT:

WEATHER: Clear and dry.
MIN TEMP: 70-73° **MAX RH:** 55-65%
PROBABILITY OF PRECIP: 0% **CHC WTG RAIN:** 0% **LAL:** 1
WINDS (20 feet): NE 4-9 mph with gusts to 15 mph.
TRANSPORT WIND: N/NE 10-15 mph.

THURSDAY:

WEATHER: Sunny and hot.
MAX TEMP: 96-99° **HEAT INDEX:** 96-99° **MIN RH:** 20-25%
PROBABILITY OF PRECIP: 0% **CHC WTG RAIN:** 0% **LAL:** 1
WINDS (20 feet): NE 8-13 mph with gusts up to 20 mph.
MIXING HEIGHT: Weak morning inversion. 9,000-10,000 ft during the afternoon.
TRANSPORT WIND: N 13-18 mph.

EXTENDED OUTLOOK: FRIDAY - SUNDAY: On Friday, flow becomes onshore with a slight increase in moisture. While onshore flow increases, elevated to critical fire weather is still expected as gusty winds could accompany the sea breeze as it pushes inland. By Saturday, onshore flow is likely to strengthen with increasing afternoon RH into the 40% range and excellent recoveries of 90-100%. Winds will be lighter during the afternoon, but the sea breeze front could cause gusty winds in the evening for a few hours. The slight increase in moisture will also bring back isolated showers and T'storms into the weekend. There is some indication wetting rains could be possible, but confidence is low at this time.

FIRE BEHAVIOR FORECAST

FORECAST NUMBER: 06	TYPE OF FIRE: Wildland, Type 1
FIRE NAME: Tiger Island	OPERATIONAL PERIOD: Day and Night Shift
DATE ISSUED: Tuesday, August 29, 2023 Time Issued: 1800	SHIFT DATE: Wednesday, August 30, 2023
UNIT: Private Lands	SIGNED: Alison Coons, FBAN

WEATHER SUMMARY:

Local Thresholds – Watch Outs Temp >80°, Min RH < 35%, Winds > 20 mph	Forecast for Today Temp: 99°, Min RH: 20%, Winds: 10-15 mph Gust 25
---	---

FIRE BEHAVIOR:

Fuels are critically dry. **KBDI and ERC values are at record levels.** Fuel conditions combined with gusty winds, especially during the afternoon, have the potential to produce extreme fire behavior. Fires may exhibit erratic and explosive growth behavior. Be alert for thunderstorms in the fire area during the afternoon that could cause strong erratic winds.

Fire Behavior based on values for the fuel models shown.

Vegetation	Fuel Model	Max Rate of Spread		Flame Length	
		Day	Night	Day	Night
Grass/Shrub	GS3	78 ch/hr	10 ch/hr	12 feet	5
Southern Rough	7	68 ch/hr	12 ch/hr	10 feet	5
Timber Litter and Understory	TU2 / TL6	6 ch/hr	2 ch/hr	4 feet	1

During peak heating expect **spotting** distances up to **0.35 miles** from wind driven ground fire and slightly less from torching trees.

Probability of Ignition Day = **68%** Probability of Ignition Night = **27%**

A new spot fire or ignition in the afternoon could reach **4 acres** in an hour in sheltered timber and up to **11 acres** where grass/shrub and southern rough fuels are continuous.

Specific Areas of Concern:

All Divisions: In areas of partial consumption from the original fire front, expect increased potential for reburn.

Berms from line construction continue to hold heat and provide potential for fire to cross into unburned fuels.

Div A: Continue to watch for heat in the area below State Rd 110. Where reburn potential and unburned areas exists, short runs encouraged by northerly winds are possible in the afternoon and early evening.

Div F and Div J: Watch for torching and possible spotting from pockets of green near the fire line are of concern.

Div O and W: Isolated and scattered heat remain close to the lines. Watch for torching and spotting.

AIR OPERATIONS:

Generally good conditions for air operations, early morning fog or inversion may cause short term visibility issues.

Fire Behavior Safety Message

Smoldering stump holes and root systems may drop the ground out from beneath you. As creeping and smoldering continues this possibility will increase.

Use the QR Code below to access the:

**Fuels and Fire Behavior
Advisory for Louisiana,
Southern Mississippi,
Southwest Alabama and the
Western Florida Panhandle**
Issued on August 18, 2023



Use the QR Code below to access the:

**2021 LA Kisatchie NF
FDRA1 Pocket Card**





HEALTH AND SAFETY MESSAGE

“Shallow men believe in luck; wise and strong men in the cause and effect.”
—Ralph Waldo Emerson

INCIDENT: Tiger Island	DATE: 08/30/2023 Operational Period: Day-Swing
------------------------	---

Major Hazards and Risks:

1. Traffic and Driving 2. Fire Weakened Trees 3. Heat/Dehydration 4. Heavy Equipment Ops

Fire Order of the Day – *Know What Your fire is doing at all times.*

Burned trees may pose a hazard in three ways.

- Fire does not just burn above ground; stumps and root systems are also consumed leaving holes and hollow areas below the ground.
- A person can easily stumble into these holes or have the earth give way above a burned-out root system. Immediately following a fire, these pockets may still be hot and pose a burn risk. The fire may have consumed a significant portion of a tree’s root system or lower trunk, although the tree is frequently left standing.
- These trees may fall at any time, even without wind or sound. Fallen trees may get hung up in the branches of other trees and break away later. Upper portions of the trunk and branches may have been partially consumed in the fire, yet still retain a fragile connection to the tree. Again, these may break away from the main tree without warning. Wind will exacerbate the problem.

KEEP YOUR HEAD IN THE GAME

Complacency is an attitude that affects our judgment and decision-making ability. Complacency effects how we respond to hazards on the fire line such as power lines, driving conditions and reburn potential. We get used to the same fire location; the slowing fire activity and we forget that that the fire is not out. all fuels on this fire are still critically dry!!

KEEP YOUR HEAD IN THE GAME

Take this time of slower, calmer operations to rehab yourselves. Take time to review and discuss the medical plan in the IAP. Take a 10-minute time out to discuss as a group how you would get a co-worker to help if they had a major injury where you are right now. But, most of all, keep your head in the game. Focus on being professional in your jobs and provide for Firefighter Safety first!!

Watch Out Situation of the Day



3. SAFETY ZONES AND ESCAPE ROUTES NOT IDENTIFIED

Division/Group Assignment List (ICS 204 WF)
Controlled Unclassified Information//Basic

1. Incident Name:			3.			
TIGER ISLAND			Branch:		Division/Group	
2. Operational Period: DAY					A	
Date/Time From: 08/30/2023 0700 WED		Date/Time To: 08/30/2023 1900 WED				
4. Operations Personnel						
OPERATIONS CHIEF		P.MYERS, J.KOLAKS (T)		DIVISION/GROUP SUPERVISOR		UNSTAFFED
AIR ATTACK SUPERVISOR						
5. Resources Assigned this Period						
Strike Team / Task Force / Resource Designator		LWD	Leader	Number Persons	Drop Off PT./Time	Pick Up PT./Time
O-3.10 SOFC		12/31	JOE CASTRO	1		
6. Control Operations/Work Assignments:						
TASK: Reinforce dozer lines along fire's edge and along previous spots. Coordinate with operational resources.						
PURPOSE: Keep fire north of Hwy 100W and existing control lines. Complete mop up 100 feet in.						
END STATE: Residences and structures are protected. Fire remains within the current foot print.						
7. Special Instructions:						
8. Division/Group Communication Summary						
Function	Channel	RX Frequency N/W	RX Tone/NAC	TX Frequency N/W	TX Tone/NAC	Mode
TACTICAL	1	168.0500N	110.9	168.0500N	110.9	A
AIR TO GROUND	13	168.4000N		168.4000N		A
AIR TO GROUND	14	159.3000N	114.8	159.3000N	114.8	A
9. Prepared By (Resource Unit Leader)			Approved By (Planning Section Chief)		Date	Time
RICH AUBUCHON			KELLY RUSSELL		08/29/2023	2200

Division/Group Assignment List (ICS 204 WF)

Controlled Unclassified Information//Basic

1. Incident Name:				3.			
TIGER ISLAND				Branch:		Division/Group	
2. Operational Period: DAY							
Date/Time From: 08/30/2023 0700		WED		Date/Time To: 08/30/2023 1900		WED	
4. Operations Personnel							
OPERATIONS CHIEF		P.MYERS, J.KOLAKS (T)		DIVISION/GROUP SUPERVISOR		DAVID ZUARES JAKE GUADIANA (T)	
AIR ATTACK SUPERVISOR							
5. Resources Assigned this Period							
Strike Team / Task Force / Resource Designator		LWD	Leader		Number Persons	Drop Off PT./Time	Pick Up PT./Time
HC1 CW1 SMOKEY BEAR		09/06	JOSE RUE		23		
E-6.1 STEN GA-GAS			MATT RYMER,		2		
E-6.2 STEN GA-GAS			AUSTIN ROLAND (T)		1		
E-6.13 ENG6 GA-GAS			DAVID HODGES		1		
E-6.8 ENG6 GA-GAS			JOSEPH FINCHER		2		
E-6.12 ENG6 GA-GAS			DOUG REDDING		2		
E-6.17 ENG6 GA-GAS			PATRICK FLOYD		1		
E-6.18 ENG6 GA-GAS			KERRY PHILLIPS		2		
E-11 ENG6 VAIL			KELLY KLEIN		3		
E-26 TFLD			LEE WEAVER		1		
E-26.1 TPOP2			AARON PLAYER		1		
E-26.2 TPOP2			TIM MYERS		1		
E-23.1 STDZ SC			CHETT FOYLE		1		
E-23.2 STDZ (T) SC			JOSHUA THOMPSON		1		
DOZ SC			GEORGE MARTIN		2		
E-23.11 DOZ SC			BENJAMIN JORDAN		2		
E-25 STDZ SC			CLAYTON HOWARD		1		
8. Division/Group Communication Summary							
Function	Channel	RX Frequency N/W	RX Tone/NAC	TX Frequency N/W	TX Tone/NAC	Mode	
TACTICAL	2	168.2000N	110.9	168.2000N	110.9	A	
AIR TO GROUND	13	168.4000N		168.4000N		A	
AIR TO GROUND	14	159.3000N	114.8	159.3000N	114.8	A	
9. Prepared By (Resource Unit Leader)			Approved By (Planning Section Chief)			Date	Time
RICH AUBUCHON			KELLY RUSSELL			08/29/2023	2200

Division/Group Assignment List (ICS 204 WF)
Controlled Unclassified Information//Basic

1. Incident Name:				3.		
TIGER ISLAND				Branch:	Division/Group F	
2. Operational Period: DAY						
Date/Time From: 08/30/2023 0700 WED		Date/Time To: 08/30/2023 1900 WED				
4. Operations Personnel						
OPERATIONS CHIEF		P.MYERS, J.KOLAKS (T)		DIVISION/GROUP SUPERVISOR		DAVID ZUARES JAKE GUADIANA (T)
AIR ATTACK SUPERVISOR						
5. Resources Assigned this Period						
Strike Team / Task Force / Resource Designator		LWD	Leader	Number Persons	Drop Off PT./Time	Pick Up PT./Time
DOZ SC			BRIAN PARNELL	1		
DOZ SC			JAMES ZELENAK	1		
E-4.1 STDZS GA-GAS			MARCUS BEASELY	1		
DOZ2 GA-GAS			KEITH MBULO	1		
DOZ2 GA-GAS			BARRY BOHANNON	1		
SOFC			JOE CASTRO	1		
O-79 SOFR			MARTEL KNIPE	1		
O-84 EMPF			JASON OLSON	1		
AMBULANCE LA 007			CHAD BURDEN	1		
6. Control Operations/Work Assignments:						
<p>TASK: Identify and establish dozer lines as direct as possible where needed to complete containment and make traversable by type 6 engine. Check and improve perimeter lines for holding integrity, including any hot spots from previous shift. Burn out when necessary as opportunity and resources present themselves with ops approval. Prioritize securing fire near Merryville then moving to the North and East to tie in with Division J.</p> <p>PURPOSE: Keep fire north of Frazier Rd., east of the Hwy 190 corridor and south of Whiddon Rd and Shinn Rd.</p> <p>END STATE: Protection of Merryville, residences, structures and to provide the ability of residences a return to their homes.</p>						
7. Special Instructions:						
8. Division/Group Communication Summary						
Function	Channel	RX Frequency N/W	RX Tone/NAC	TX Frequency N/W	TX Tone/NAC	Mode
TACTICAL	2	168.2000N	110.9	168.2000N	110.9	A
AIR TO GROUND	13	168.4000N		168.4000N		A
AIR TO GROUND	14	159.3000N	114.8	159.3000N	114.8	A
9. Prepared By (Resource Unit Leader)			Approved By (Planning Section Chief)		Date	Time
RICH AUBUCHON			KELLY RUSSELL		08/29/2023	2200

Division/Group Assignment List (ICS 204 WF)

Controlled Unclassified Information//Basic

1. Incident Name:			3.			
TIGER ISLAND			Branch:		Division/Group	
2. Operational Period: DAY						
Date/Time From: 08/30/2023 0700 WED		Date/Time To: 08/30/2023 1900 WED		J		
4. Operations Personnel						
OPERATIONS CHIEF		P.MYERS, J.KOLAKS (T)		DIVISION/GROUP SUPERVISOR		DAVE WALKER, JOSH HAVIRD (T)
AIR ATTACK SUPERVISOR						
5. Resources Assigned this Period						
Strike Team / Task Force / Resource Designator		LWD	Leader	Number Persons	Drop Off PT./Time	Pick Up PT./Time
E-30 ENG6 KYS			JASON HUNT	2		
E-31 ENG6 KYS			TEENA DUNN	2		
E-29 ENG6 KYS			SUSAN NIGHTINGALE	229		
E-32 ENG6 KYS			ED STEPHENS	2		
E-5.1 STEQ GA-GAS			MARK PEEPLES	1		
E-5.7 TRP3 GA-GAS			ROB MOORE	1		
E-5.10 TRP3 GA-GAS			CALEB MCGAHEE	2		
E-22 TRP3 KYS			DEWAYNE ANDERSON	2		
O-3.10 SOFC			JOE CASTRO	1		
AMBULANCE LA 021			CAROLYN CHISHOLM	2		
6. Control Operations/Work Assignments:						
<p>TASK: Identify and establish all dozer lines as direct as possible and make traversable by type 6 engine. Contain fire south of Stamps Rd. and west of Schuetz Rd. Burn out where necessary to improve lines and holding integrity with approval from operations. Prioritize constructing and improving line to the north and west to tie in with Division F. Begin to mop up 100 feet interior from perimeter.</p> <p>PURPOSE: Structures are protected to withstand advancing fire and progression to north and east is halted.</p> <p>END STATE: Structures protected and fire remains within the current footprint.</p>						
7. Special Instructions:						
8. Division/Group Communication Summary						
Function	Channel	RX Frequency N/W	RX Tone/NAC	TX Frequency N/W	TX Tone/NAC	Mode
TACTICAL	3	168.6000N	110.9	168.6000N	110.9	A
AIR TO GROUND	13	168.4000N		168.4000N		A
AIR TO GROUND	14	159.3000N	114.8	159.3000N	114.8	A
9. Prepared By (Resource Unit Leader)			Approved By (Planning Section Chief)		Date	Time
RICH AUBUCHON			KELLY RUSSELL		08/29/2023	2200

Division/Group Assignment List (ICS 204 WF)
Controlled Unclassified Information//Basic

1. Incident Name:			3.			
TIGER ISLAND			Branch:		Division/Group	
2. Operational Period: DAY					LDAF DOZER GROUP	
Date/Time From: 08/30/2023 0700 WED		Date/Time To: 08/30/2023 1900 WED				
4. Operations Personnel						
OPERATIONS CHIEF		P.MYERS, J.KOLAKS (T)		DIVISION/GROUP SUPERVISOR		JEFF ANDERS
AIR ATTACK SUPERVISOR						
5. Resources Assigned this Period						
Strike Team / Task Force / Resource Designator		LWD	Leader	Number Persons	Drop Off PT./Time	Pick Up PT./Time
DOZ LADF			JOHN NORMAN	3		
DOZ LADF			MATT CANNON	3		
DOZ LADF			FISHER GARDNER	3		
DOZ LADF			CRAIG HONEYCUTT	3		
DOZ LADF			RALPH WOODS	3		
SOFC			JOE CASTRO	1		
6. Control Operations/Work Assignments:						
TASK: Engage in high priority areas within Tiger Island Fire or initial attack as directed from operations.						
PURPOSE: Provide surge resources as needed to complete critical tasks.						
END STATE: Critical suppression objectives are complete.						
7. Special Instructions:						
8. Division/Group Communication Summary						
Function	Channel	RX Frequency N/W	RX Tone/NAC	TX Frequency N/W	TX Tone/NAC	Mode
TACTICAL	9	154.2800N	156.7	154.2800N	156.7	A
9. Prepared By (Resource Unit Leader)			Approved By (Planning Section Chief)		Date	Time
RICH AUBUCHON			KELLY RUSSELL		08/29/2023	2200

Division/Group Assignment List (ICS 204 WF)

Controlled Unclassified Information//Basic

1. Incident Name:			3.			
TIGER ISLAND			Branch:		Division/Group	
2. Operational Period: DAY						
Date/Time From: 08/30/2023 0700 WED		Date/Time To: 08/30/2023 1900 WED		O/W		
4. Operations Personnel						
OPERATIONS CHIEF		P.MYERS, J.KOLAKS (T)		DIVISION/GROUP SUPERVISOR		LISA LONCAR GREG TITUS (T)
AIR ATTACK SUPERVISOR						
5. Resources Assigned this Period						
Strike Team / Task Force / Resource Designator		LWD	Leader	Number Persons	Drop Off PT./Time	Pick Up PT./Time
HEQB			ANDY MASON	1		
HEQB			GARRETT NUTTING	1		
E14 ENG6 ARIZONA			GORDON MESA	4		
STDZ NAT GUARD			CAPTAIN LEWIS	1		
DOZ1 NAT GUARD				2		
DOZ1 NAT GUARD				3		
DOZ1 NAT GUARD				3		
DOZ1 NAT GUARD				3		
SOFC			JOE CASTRO	1		
AMBULANCE LA 018			PARRISH WALLACE	2		
6. Control Operations/Work Assignments:						
<p>TASK: Identify and establish all dozer lines as direct as possible. Contain fire south of Neale Oilfield Rd west of Persimmon Marsh and west of Hwy 27. Burn out where necessary to improve lines and holding integrity with approval from operations. Prioritize constructing and improving line to the south to tie in with Division A. Begin to mop up 100 feet interior from perimeter.</p> <p>PURPOSE: Structures are protected to withstand advancing fire and progression to north and east is halted.</p> <p>END STATE: Structures protected and fire remains within the current footprint.</p>						
7. Special Instructions:						
8. Division/Group Communication Summary						
Function	Channel	RX Frequency N/W	RX Tone/NAC	TX Frequency N/W	TX Tone/NAC	Mode
TACTICAL	4	166.7250N	110.9	166.7250N	110.9	A
AIR TO GROUND	13	168.4000N		168.4000N		A
AIR TO GROUND	14	159.3000N	114.8	159.3000N	114.8	A
9. Prepared By (Resource Unit Leader)			Approved By (Planning Section Chief)		Date	Time
RICH AUBUCHON			KELLY RUSSELL		08/29/2023	2200

Division/Group Assignment List (ICS 204 WF)

Controlled Unclassified Information//Basic

1. Incident Name:				3.		
TIGER ISLAND				Branch:	Division/Group	
2. Operational Period: NIGHT						
Date/Time From: 08/30/2023 1900 WED		Date/Time To: 08/31/2023 0700 THU		NIGHT		
4. Operations Personnel						
OPERATIONS CHIEF		MARK JAMIESON		DIVISION/GROUP SUPERVISOR		
AIR ATTACK SUPERVISOR						
5. Resources Assigned this Period						
Strike Team / Task Force / Resource Designator		LWD	Leader	Number Persons	Drop Off PT./Time	Pick Up PT./Time
E-27 ENG6 SC			BEN KINDLE	1		
E-28 ENG6 SC			THOMAS WILKINS	1		
E-24 STDZ SC			WILLIAM PRESSLEY	1		
E-24.6 TPOP SC			BUCK NEWCOMB	1		
E-24.9 TPOP SC			RUSSELL HALE	1		
E-3.1 STEQ GA-GAS			KEN WELLS	1		
E-3.5 TPOP GA-GAS			EVAN HYERS	1		
E-3.8 TPOP GA-GAS			BLAIR KIRKSEY	1		
O-3.9 SOFC			TOMMY HAWKINS	1		
AMBULANCE 013			JESSICA TRICHEL	1		
AMBULANCE LA 010			KARL MANN	1		
6. Control Operations/Work Assignments:						
<p>TASK: Assess and engage resources as needed along perimeter to safely contain the fire line. Utilize LA State resources to assist in protecting resources and provide identified structure protection needs.</p> <p>PURPOSE: Maintain current fire boundaries.</p> <p>END STATE: Residences, structures are protected and fire remains within the current footprint.</p>						
7. Special Instructions:						
<p>LA-State employ spotters to maintain personell accountability. Always position resources for rapid egress.</p>						
8. Division/Group Communication Summary						
Function	Channel	RX Frequency N/W	RX Tone/NAC	TX Frequency N/W	TX Tone/NAC	Mode
TACTICAL	1	168.0500N	110.9	168.0500N	110.9	A
AIR TO GROUND	13	168.4000N		168.4000N		A
AIR TO GROUND	14	159.3000N	114.8	159.3000N	114.8	A
9. Prepared By (Resource Unit Leader)			Approved By (Planning Section Chief)		Date	Time
RICH AUBUCHON			KELLY RUSSELL		08/29/2023	2200

Controlled Unclassified Information/Basic

ICS 205

INCIDENT RADIO COMMUNICATIONS PLAN		Incident Name TIGER ISLAND FIRE				Date/Time Prepared: AUGUST 29, 2023 1800 HRS	Operational Period Date/Time From: 8/30/23 0700 HRS To: 08/31/23 0700 HRS		
Ch #	Function	Channel Name/Trunked Radio System Talkgroup	Assignment	RX Freq N or W	RX Tone/NAC	TX Freq N or W	Tx Tone/NAC	Mode	Remarks
1	TAC	TAC 1	DIV ANIGHT	168.0500N	110.9	168.0500N	110.9	A	
2	TAC	TAC 2	DIV F	168.2000N	110.9	168.2000N	110.9	A	
3	TAC	TAC 3	DIV J	168.6000N	110.9	168.6000N	110.9	A	
4	TAC	TAC 4	DIV OW	166.7250N	110.9	166.7250N	110.9	A	
5	TAC	TAC 5	STRUCTURE GROUP	166.7750N	110.9	166.7750N	110.9	A	
6									
7	TAC	D4 WEST TALK	ALL DIVS	151.3700N	110.9	151.3700N	110.9	A	
8	TAC	WEST FIRE 1	ALL DIVS	151.4000N	110.9	151.4000N	110.9	A	
9	TAC	VFIRE 21	ALL DIVS	154.2800N	156.7	154.2800N	156.7	A	
10									
11									
12									
13	AIR TO GROUND	A/G PRI	A/G PRIMARY	168.4000N		168.4000N		A	
14	AIR TO GROUND	A/G SEC	A/G SECONDARY	159.3000N	114.8	159.3000N	114.8	A	
15									
16	AIR GUARD	AIRGUARD	ALL	168.6250N	110.9	168.6250N	110.9	A	Air Guard

5. Prepared by (Communications Unit) Jerry W Patrick, COML

Incident Location: TIGER ICP
County/State LA

Latitude / Longitude:
° / °

The convention calls for frequency lists to show four digits after the decimal place, followed by either an "N" or a "W", depending on whether the frequency is narrow or wide band. Mode refers to either "A" or "D" indicating analog or digital (Project 25).

***** Special Instructions: Use Human Repeater When Necessary.**

AIR OPERATIONS SUMMARY 220		Prepared By: Darlene Hall	Prepared: 8/29/23	Prepared Time: 1500
1. INCIDENT NAME: TIGER ISLAND FIRE		2. OPERATIONAL PERIOD 8/30/23	START TIME: 0700	END TIME: 2100
			SUNRISE: 0:649	SUNSET: 19:40

3. REMARKS:		4. READY ALERT AIRCRAFT:		
<p>AVIATION SAFETY IS A TEAM EFFORT ALL MISSIONS WILL BE ANALYZED IN TERMS OF HAZARDS AND RISKS</p> <ul style="list-style-type: none"> • THE RISK ASSESSMENT IS AN OPEN PROCESS WELCOMING INPUT. • HAZARDS WILL BE MITIGATED; RISK WILL BE REDUCED. <p>IF A MISSION FEELS UNSAFE, IDENTIFY SAFE ALTERNATIVES! ***<i>Visibility and winds, have been a safety issue.</i>***</p>		<p>Medivac: See Medical Plan IWI</p> <p>5. TFR: 3/1554</p> <p>9 NM Center 30°41'40"N / 93°27'00"W Surface-6000' AMSL</p>		

6. PERSONNEL		NAME	PHONE #	7. FREQUENCIES	AM	FM	8A. FIXED-WING Ordering
AOBD		Darlene Hall	530-228-6004 Darlene_Hall@firenet.gov				AA-95LF @ Bravo Units available from AEX thru LICC
ASGS-T		Clint Davis	479-243-8648 Pineknot03@hotmail.com	A/A	120.600		8B. Air Attack currently ordered for coverage thru Pineville Dispatch
HEBM		Jake Pastoruiz	406-459-4558	A/A Secondary	134.975		REMARKS: DIV contact Military AC on Inner Ops State 3 Radio
				A/G Primary		168.400	
				A/G Secondary		159.300 (S) T-114.8	4-6 Guard ships available through Air Ops/Air Support To be assigned to a division.
						168.625 (S) T-110.9	

9. HELICOPTERS: (Order through ATGS or Operations)													
FAA N#	TY	MAKE/MODEL	BASE	START	AVAIL	REMARKS	FAA N#	TY	MAKE/MODEL	BASE	START	AVAIL	REMARKS
OMB	1	KMax	DRI	0700	0800	Water Drops							
5PJ	1	UH60	DRI	0700	0800	Water Drops	8MG	3	AS350 (B-3)	DRI	0700	0800	Recon, Water, Other
47V	2	58T	DRI	0700	0800	Water Drops							

FINANCE

Finance Processes:

- **If you are an AD**, we need a copy of your **Casual Hire form & Resource Order**.
- **If you are a Cooperator or Contractor**, we need a copy of your **Agreement/Contract and Resource Order**.
- **All Contract/Cooperator Equipment** needs to have a **Pre-Use Inspection form**.
- **If you are a Crew**, we need a copy of your **Manifest** as well as the documents mentioned above.
- **If you are an Overhead Resource**, we need a copy of your Resource Order.

ALL: Please email your CTRs, Shift Tickets and any of the documents mentioned above as a PDF or JPEG to: 2023.tigerisland.finance@firenet.gov

In the SUBJECT LINE put OVERHEAD with O# or EQUIPMENT with E# to help identify the content in the email.

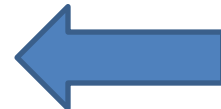


Finance Fire Codes

FWS Code: FFF2500000QK8T0

NPS Code: PP.FSQK8TD23.00.1

USFS code: (1522) PNQK8T



The finance staff will attend all briefings in case you have any questions or need assistance in submitting your information!

Training Message

ALL Trainees:

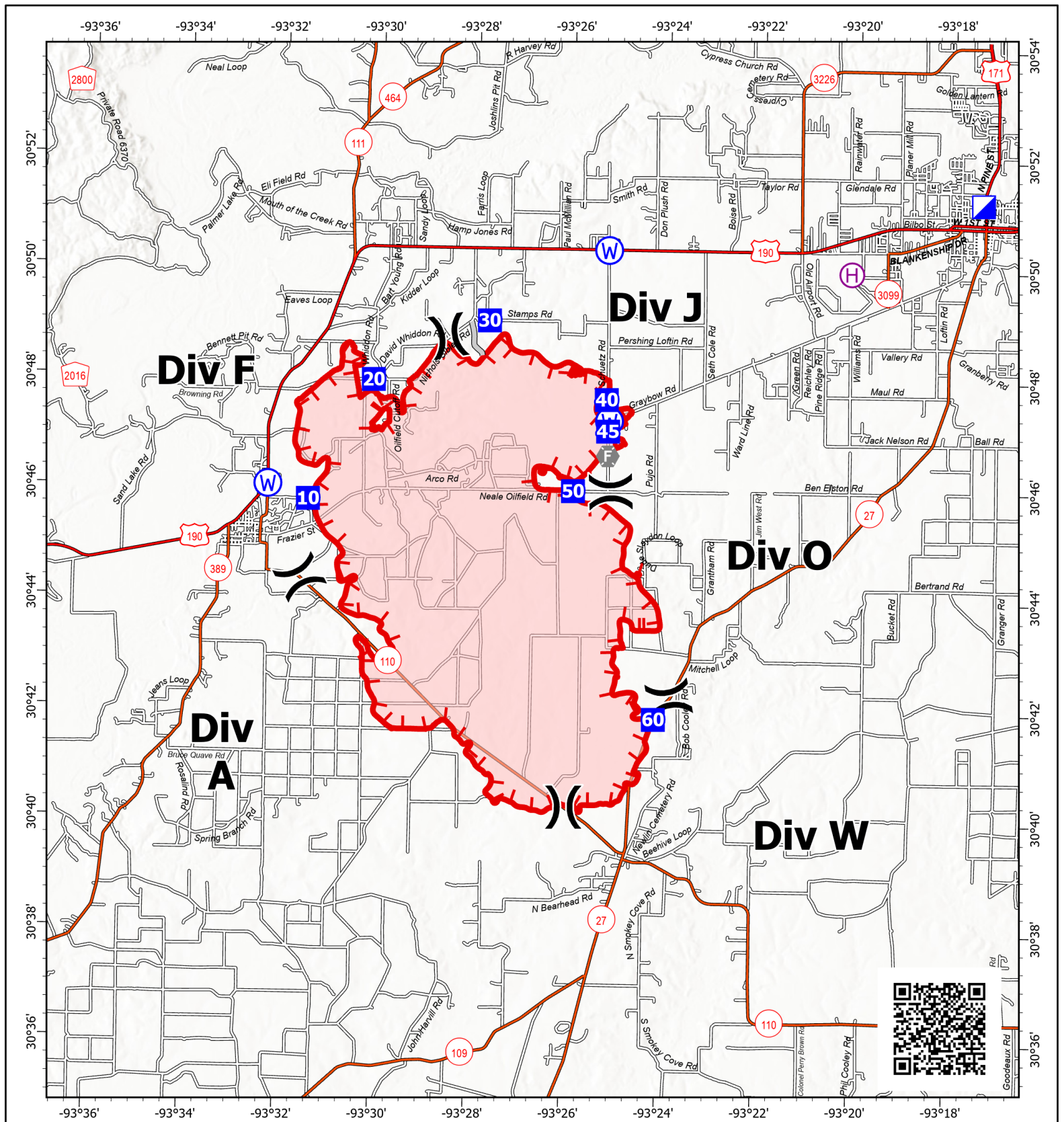
If you are working as a trainee on the Tiger Island Fire, no matter the position, please check in with the Training Specialist. Bring your Task Book, your red card, your Order #, and your coach/evaluator to the Training Specialist at the Check-In table inside the front door in the ICP.

This will take you less than 5 minutes. It will help us track numbers and positions and it will produce a good training packet that will be emailed to the person you designate to document your experience.

Greg Seamon
Training Specialist
08/30/2023

Tiger Island ICP Map



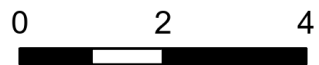
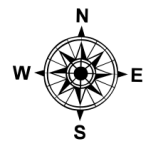


IAP Map

Tiger Island
LA-LAS-000252

August 30, 2023 Day

31,342 acres at August 29, 2023 0345



Miles

- Helibase
- Division Break
- Incident Command Post
- Drop Point
- Fire Station
- Water Source
- Access or Improved Road
- Uncontained
- Wildfire Daily Fire Perimeter

1:170,000 | SA Red Team GIS | 8/29/2023 1624
Acres from IR and GPS
North American 1983 Datum. LatLong Grid

MEDICAL PLAN (ICS 206 WF)

Controlled Unclassified Information//Basic

1. Incident/Project Name				2. Operational Period				
Tiger Island				08/30/23 - 08/31/23				
2. Medical Aid Stations								
Medical Aid Stations		Location			Advanced Life Support (ALS)			
					Yes		No	
3. Ambulance Services								
Name		Location		Phone		Advanced Life Support (ALS)		
						Yes No		
LA 007		Day - Division F		(337) 660-5990		X		
LA 018		Day - Division O				X		
LA 021		Day - Division J				X		
LA 013		Night Division		(318) 548-0349		X		
LA 010		Night Division		(318) 458-3606		X		
Local EMS		<i>For emergencies outside of incident</i>		911		X		
4. Air Ambulance Services								
Name		Location, Capabilities				Advanced Life Support (ALS)		
						Yes No		
Coast Guard New Orleans Sector (504) 589-6225		2-2.5 hr response time Hoist, Night Vision, BLS Houston or New Orleans				X		
Acadian Air Med (337) 291-1594		Woodworth, LA Lat/Long 31° 05.820', -92° 17.694'				X		
Acadian Air Med (337) 291-1594		Lake Charles Regional Airport Lat/Long 30° 04.404', -93° 08.502'				X		
5. Hospitals								
Name/Address	GPS Datum – WGS 84 Coordinate Standard		Travel Time		Phone	Helipad		Level of Care Facility
			Air Gnd			Yes No		
Ochsner LSU Health Shreveport 1541 Kings Highway Shreveport, LA 71103	Lat:	32° 29.724'	40 min	113 min	(318) 626-0000	X		L1 Trauma, STEMI, Stroke, Burn Center
	Long:	-93° 45.000'						
Byrd Regional Hospital 1020 Fertitta Blvd. Leesville, LA 71446	Lat:	35° 54.303'	20 min	40 min	(337) 239-9041	X		Stroke Center
	Long:	-79° 3.041'						
Rapides Regional Medical 211 4th St Alexandria, LA 71301	Lat:	34° 43.566'	30 min	105 min	(318) 769-3000	X		L2 Trauma, STEMI
	Long:	-76° 45.307'						
University Medical Center 2000 Canal St. New Orleans, LA 70112	Lat:	29° 57.561'	100 min	4 hrs	(504) 702-3000	X		L1 Trauma, STEMI, Stroke, Burn Center
	Long:	-90° 4.964'						
6. Clinics								
Outpatient Medical Center	908 S 10th St Suite B, Leesville, LA (337) 238-1274 (0800-1800 Mon, Tue, Thu; 0800-1700 Wed; 0800-1300 Fri)							
Beauregard Health Center	600 S Pine St, DeRidder, LA 70634 (337) 462-7100 (24 hour ER)							

8. Prepared By (Medical Unit Leader)		9. Date/Time		10. Reviewed by (Safety Officer)	
Fred Adler, MEDL (479) 238-6064 Nick Arnett, MEDL (408) 888-1900		8/29/2023		Joe Castro, SOFC	

IWI IC Responsibilities – Division Group Supervisor or Point of Contact

- Take charge of the scene. Call ambulance number above (note different numbers for day v. night), establish communications with Division Supervisor or Branch Director.
- Call the IWI phone: (208) 891-6743.
- Assign or begin patient assessment (Medical Incident Report) and first aid. Request additional medical resources on division/branch or across incident.
- Determine patient transportation through consultation with ambulance. Consider transportation time, risk to personnel, destination facility and available operational resources. If air transport is chosen, implement a plan for alternative transportation in the event aircraft cannot complete the mission; order alternate transportation resources through Branch Director as early as possible.
- Notify Branch Director as resources arrive and any patient status changes. Names of injured or deceased individuals will not be transmitted on the radio.
- Initiate documentation for future investigation; if a line safety officer is available, assign them to lead documentation. Do not move deceased individuals, gear or personal effects except to accomplish rescue work or protect the safety of others. Obtain written documentation of witnesses. The Unit Log, ICS 214, may be used for the initial documentation, but a subsequent narrative will be required.
- As appropriate, conduct an After Action Review to determine successes, areas to improve and lessons learned

MEDICAL PLAN (ICS 206 WF)

Controlled Unclassified Information//Basic

Medical Incident Report

FOR A NON-EMERGENCY INCIDENT, WORK THROUGH CHAIN OF COMMAND TO REPORT AND TRANSPORT INJURED PERSONNEL AS NECESSARY.

FOR A MEDICAL EMERGENCY: IDENTIFY ON-SCENE INCIDENT COMMANDER BY NAME AND POSITION AND ANNOUNCE "MEDICAL EMERGENCY" TO INITIATE RESPONSE FROM IMT COMMUNICATIONS/DISPATCH.

Use the following items to communicate situation to communications/dispatch.

1. CONTACT COMMUNICATIONS / DISPATCH (Verify correct frequency prior to starting report)

Ex: "Communications, Div. Alpha. Stand-by for Emergency Traffic."

2. INCIDENT STATUS: Provide incident summary (including number of patients) and command structure.

Ex: "Communications, I have a Red priority patient, unconscious, struck by a falling tree. Requesting air ambulance to Forest Road 1 at (Lat./Long.) This will be the Trout Meadow Medical, IC is TFLD Jones. EMT Smith is providing medical care."

Severity of Emergency / Transport Priority	<input type="checkbox"/> RED / PRIORITY 1 Life or limb threatening injury or illness. Evacuation need is IMMEDIATE <i>Ex: Unconscious, difficulty breathing, bleeding severely, 2° – 3° burns more than 4 palm sizes, heat stroke, disoriented.</i> <input type="checkbox"/> YELLOW / PRIORITY 2 Serious Injury or illness. Evacuation may be DELAYED if necessary. <i>Ex: Significant trauma, unable to walk, 2° – 3° burns not more than 1-3 palm sizes.</i> <input type="checkbox"/> GREEN / PRIORITY 3 Minor Injury or illness. Non-Emergency transport <i>Ex: Sprains, strains, minor heat-related illness.</i>	
Nature of Injury or Illness & Mechanism of Injury		<i>Brief Summary of Injury or Illness (Ex: Unconscious, Struck by Falling Tree)</i>
Evacuation Request		<i>Air Ambulance / Short Haul/Hoist Ground Ambulance / Other</i>
Patient Location		<i>Descriptive Location & Lat. / Long. (WGS84)</i>
Incident Name		<i>Geographic Name + Medical (Ex: Trout Meadow Medical)</i>
On-Scene Incident Commander		<i>Name of on-scene IC of Incident within an Incident (Ex: TFLD Jones)</i>
Patient Care		<i>Name of Care Provider (Ex: EMT Smith)</i>

3. INITIAL PATIENT ASSESSMENT: Complete this section for each patient as applicable (start with the most severe patient)

Patient Assessment: See IRPG PAGE 106

Treatment:

4. EVACUATION PLAN:

Evacuation Location (if different): (Descriptive Location (drop point, intersection, etc.) or Lat. / Long.) Patient's ETA to Evacuation Location:

Helispot / Extraction Site Size and Hazards:

5. ADDITIONAL RESOURCES / EQUIPMENT NEEDS:

Example: Paramedic/EMT, crews, immobilization devices, AED, oxygen, trauma bag, IV/fluid(s), splints, rope rescue, wheeled litter, HAZMAT, extrication

6. COMMUNICATIONS: Identify State Air/Ground EMS Frequencies and Hospital Contacts as applicable

Function	Channel Name/Number	Receive (RX)	Tone/NAC *	Transmit (TX)	Tone/NAC *
COMMAND					
AIR-TO-GRND					
TACTICAL					

7. CONTINGENCY: Considerations: If primary options fail, what actions can be implemented in conjunction with primary evacuation method? Be thinking ahead..

8. ADDITIONAL INFORMATION: Updates/Changes, etc.

REMEMBER: Confirm ETAs of resources ordered. Act according to your level of training. Be Alert. Keep Calm. Think Clearly. Act Decisively.