

Tiger Island Fire

LA-LAS-000252

IAP

September 01, 2023 – Day Shift

September 01, 2023 – Swing Shift



Link to Tiger Island Maps

Finance/Time: 2023.tigerisland.finance@firenet.gov

Plans: 2023.tigerisland.plans@firenet.gov

Demob: 2023.tigerisland.demob@firenet.gov

PIO: 2023.tigerisland@firenet.gov - 318-239-9263

Text photos to: 912-286-3110

[Tiger Island Inciweb](#)

[Facebook@TigerIslandFire](#)

INCIDENT OBJECTIVES (ICS 202)

1. Incident Name:	2. Operational Period: DAY	
TIGER ISLAND	Date/Time From: 09/01/2023 0700 FRI	Date/Time To: 09/01/2023 2400 FRI
3. Objective(s):		
<p>1. All operations will be conducted with safety of the public and firefighters in mind. Protection of life and property is your highest priority task. When in doubt, sacrifice acres rather than firefighter and public safety.</p> <p>2. Provide public information regarding fire danger to maintain good awareness of the risk and hazards to the public. Coordinate with LDAF Public Information Officer at (225) 975-7532 or presssecretary@ldaf.la.gov and State Fire Marshall's Public Affairs Director at (225) 620-5115 or ashley.rodrique@la.gov.</p> <p>3. Manage the human resources assigned to fire incident in a manner that promotes mutual respect and is consistent with interagency human resource objectives. The team will handle EEO complaints in consultation with LDAF Human Resources involving personnel attached to the team.</p> <p>4. Continue partnership and coordination with the appropriate LDAF, State Fire Marshall, GOHSEP, and local public safety officials.</p> <p>5. Manage incident in a cost effective manner.</p>		
4. Operational Period Command Emphasis:		
<p>Stop, Think, Discuss then Act, and ensure LCES is in place prior to engaging the fire. The Tiger Island Fire receives a strategic, risk-based response, commensurate with the threats and opportunities, and uses the full spectrum of management actions, that consider fire and fuel conditions, weather, values at risk, and resources available.</p>		
General Situational Awareness:		
<p>Watch Out Situations: Extreme heat, dry fuels and fire behavior. Aviation use and possible long medivac times. Cumulative fatigue.</p>		
5. Site Safety Plan Required? Yes <input type="checkbox"/> No <input checked="" type="checkbox"/>		
Approved Site Safety Plan(s) Located		
6. Incident Action Plan (the items checked below are included in this Incident Action Plan):		
<input type="checkbox"/> ICS 202 <input type="checkbox"/> ICS 203 <input type="checkbox"/> ICS 204 <input type="checkbox"/> ICS 205 <input type="checkbox"/> ICS 205A <input type="checkbox"/> ICS 206	<input type="checkbox"/> ICS 207 <input type="checkbox"/> ICS 208 <input type="checkbox"/> ICS 220 <input type="checkbox"/> Map/Chart <input type="checkbox"/> Weather Forecast/Tides/Currents	Other Attachments: <input type="checkbox"/> _____ <input type="checkbox"/> _____ <input type="checkbox"/> _____ <input type="checkbox"/> _____
7. Prepared by: MARG OLSON	Position/Title: PSCC	Signature:
8. Approved by Incident Commander:	Name: /S/ PAT PEARSON	Signature:
ICS 202	IAP Page	Date/Time: 08/31/2023 2000

ORGANIZATION ASSIGNMENT LIST (ICS 203)

1. Incident Name:		2. Operational Period: DAY	
TIGER ISLAND		Date/Time From: 09/01/2023 0700 FRI	Date/Time To: 09/01/2023 2400 FRI
3. Incident Commander(s) and Command Staff:		DIRECTOR	
IC/UC	STEVE PARRISH	COMMUNICATIONS UNIT	JERRY PATRICK; BARRY STEARNS
DEPUTY	PAT PEARSON	MEDICAL UNIT	NICK ARNETT, RICH D'ORAZIO
IC/UC	JAY MICKEY (T)	FOOD UNIT	DAVID MALONE
SAFETY OFFICER	B.LIDELL, T.HAWKINS, J.CASTRO, J.ROSE (T), E.BRATCHER (T)	7. Operations Section:	
INFORMATION OFFICER	B.STRAWSER, S.HEISEY	DAY OPS SECTION CHIEF	SHANE STURGILL
LIAISON OFFICER	SUSAN MILLER (T) BRADLEY WRIGHT (T)	NIGHT OPS SECTION CHIEF	MARK JAMIESON
4. Agency/Organization Representative(s):		PLANNING OPS	T.FLOYD, V.EDGE
Agency/Organization	Name	FIELD OPS	P.MYERS, J.KOLAKS (T)
LDAF	WADE DUBEA STATE FORESTER	DIVISION/GROUP A	MATT BENEDICT
LDAF	MATT POLK, M. DAVIS, R. HARRIS	DIVISION/GROUP F	DAVID ZUARES, JAKE GUADIANA (T)
SE COMPACT	DARYL JONES	DIVISION/GROUP J	DAVID WALKER, JOSH HAVIRD (T)
NATIONAL GUARD	COL SCOTT SLAVEN	DIVISION/GROUP O/W	LISA LONCAR
GOHSEP	TODD SMITH, AMY MICHAELS	DIVISION/GROUP STRUCTURE GROUP	CRAIG ROBERTSON
FIRE MARSHAL	R.SHOULTZ, C.ROBERSON	DIVISION/GROUP SWING SHIFT	UNSTAFFED
5. Planning Section:		7b. Air Operations Branch:	
CHIEF	KELLY RUSSELL MARG OLSON	AIR OPS BRANCH DIRECTOR	DARLENE HALL
RESOURCES UNIT	RICH AUBUCHON	AIR SUPPORT SUPERVISOR	CLINT DAVIS (T)
SITUATION UNIT	ERIC SCHMECKPEPPER MICHAEL DOUCET (T)	HELICOPTER MANAGER	DANIEL PATTERSON
DEMOBILIZATION UNIT	DONNA THOMAS (V)	8. Finance/Administration Section:	
FIRE BEHAVIOR ANALYST	ALISON COONS, GREG TITUS	CHIEF	SANDRA MORRIS KRISTIE BOWEN (T)
TRAINING SPECIALIST	GREGORY S SEAMON	DEPUTY	JAMES MEREDITH
GIS SPECIALIST	T.BARNES, A.POOLE (T) M. HAUNSPERGER, M. DISKIN (V)	TIME UNIT	CATHERINE FARLEY
TECHNOLOGY SUPPORT SPECIALIST	JOE ASHBY TONY FARMER	PROCUREMENT UNIT	
INCIDENT METEOROLOGIST	JEREMY MICHAEL	COMPENSATION UNIT	
AIR SPECIALIST	LINDA CHAPPELL STEVE PAES (T)	COST UNIT	
6. Logistics Section:			
CHIEF	CHRIS REVELS		
DEPUTY	SALLY BROWNING		
SUPPORT BRANCH			
DIRECTOR	JOE WALKER		
SUPPLY UNIT	NINA DONLEY-RIVERS		
FACILITIES UNIT	SUSANNE ADAMS		
GROUND SUPPORT UNIT	ROBERT JOHNSON		
SERVICE BRANCH			
9. Prepared By:	Name: MARG OLSON	Position/Title: PSCC	Signature:
ICS 203	IAP Page	Date/Time: 08/31/2023 2000	



To: All Incident Personnel, Tiger Island Fire

As Southern Area National Type I Incident Commander, I am committed to a policy of “zero tolerance” of inappropriate behavior during incident operations. Any form of harassment, discriminatory practices, or disrespectful behavior will not be tolerated. Known or reported acts will be dealt with appropriately.

I am particularly concerned about the perception that alcohol has a place in any of the Incident facilities. It is not appropriate to indulge in alcoholic beverages during any fire assignment.

The Southern Area Red Team has a policy of “NO ALCOHOL” from the time of dispatch until the time of physical release from the Incident. Members of the Team voluntarily comply with this policy; all incident personnel will be expected to do so also.

We endorse, support, and expect an attitude of mutual respect for all Incident personnel and the public we serve. We also, endorse the attitude and work ethic that places “Safety First, every time on every Incident.” We expect nothing less.

/s/Steve Parrish

Incident Commander

SA Red Team



Fire Weather Forecast

FORECAST NO: 05
PREDICTION FOR: Friday and Fri Night
DATE: September 01st, 2023
FORECAST ISSUED: 1800 August 31st, 2023

Fire: Tiger Island
UNIT: LA-LAS-000252
Incident Meteorologist: *Jeremy Michael*
Signed: JRM (304-886-2331)

WEATHER DISCUSSION:

*****RED FLAG WARNING 10 AM to 8 PM *****

After another morning of poor RH recovery, A Red Flag Warning will go into effect from 10 AM until 8 PM. This is a result of hot, very dry conditions, and wind gusts up to 15 mph. A watchout situation this evening will be if the sea breeze reaches the fire area bringing brief gusty winds to 20-30 mph. However, RH will rapidly recover through the evening and eventually result in excellent RH (90-100%) by Saturday morning. There is a low probability of an isolated shower or storm along this boundary with gusty winds and lightning the main risks.

TODAY:

WEATHER: Mostly sunny to partly cloudy. A 10% chance of an isolated shower or storm.
MAX TEMP: 98-101° **HEAT INDEX:** 97-102° **MIN RH:** 20-25%
PROBABILITY OF PRECIP: 10% **CHC WTG RAIN:** 5% **LAL:** 1/2
WINDS (20 feet): NE 3-8 mph with gusts up to 15 mph. Sea breeze with gusty winds 20-30 mph possible during the early evening. Moderate confidence.
MIXING HEIGHT: Weak morning inversion. 9,000-10,000 ft during the afternoon.
TRANSPORT WIND: NE 5-10 mph.

TONIGHT:

WEATHER: Mostly clear with increasing RH behind sea breeze.
MIN TEMP: 71-74° **MAX RH:** 90-100%
PROBABILITY OF PRECIP: 10% **CHC WTG RAIN:** 5% **LAL:** 1
WINDS (20 feet): NE switching to SE around 7pm at 3-8 mph. Sea breeze with gusty winds 20-30 mph possible during the early evening. Moderate confidence.
TRANSPORT WIND: S/SE 5-10 mph.

SATURDAY:

WEATHER: Partly cloudy becoming mostly cloudy with scattered showers and thunderstorms.
MAX TEMP: 97-100° **HEAT INDEX:** 98-104° **MIN RH:** 40-45%
PROBABILITY OF PRECIP: 45% **CHC WTG RAIN:** 20% **LAL:** 3
WINDS (20 feet): E 4-9 mph with gusts up to 16 mph. Gusty and erratic outflows winds from variable directions likely from storms. Sea breeze is likely to push through with gusty winds early in the evening.
MIXING HEIGHT: Weak morning inversion. 8,000-9,000 ft during the afternoon.
TRANSPORT WIND: E 4-9 mph.

EXTENDED OUTLOOK: SUNDAY- TUESDAY: A weak weather system will continue to influence the regional weather into early next week as onshore southerly flow will strengthen and increase RH. This will lead to scattered to numerous showers/storms mainly in the afternoon and excellent RH recoveries near 100% each morning. In addition, probabilities are increasing for wetting rains (0.25") across the fire area each 24 hr period. Gusty and erratic outflow winds, lightning, and muddy roads from any heavy rain are the main risks.

FIRE BEHAVIOR FORECAST

FORECAST NUMBER: 08	TYPE OF FIRE: Wildland, Type 1
FIRE NAME: Tiger Island	OPERATIONAL PERIOD: Day Shift
DATE ISSUED: Thursday, August 31, 2023 Time Issued: 1800	SHIFT DATE: Friday, September 1, 2023
UNIT: Private Lands	SIGNED: Greg Titus, FBAN

WEATHER SUMMARY:

Local Thresholds – Watch Outs Temp >80°, Min RH < 35%, Winds > 20 mph	Forecast for Today Temp: 99°, Min RH: 24%, Winds: 6-7 mph Gust 10
---	---

FIRE BEHAVIOR:

Fuels are critically dry. **KBDI and ERC values are at record levels.** Fuel conditions combined with gusty winds, especially during the afternoon when fine fuels are the driest, have the potential to produce extreme fire behavior. Fires may exhibit explosive fire behavior with rapid rates of spread and long-range spotting. Be alert for thunderstorms that could cause strong erratic winds. The smallest heat source could transition into active flame under current conditions.

All fuels are available. Live fuel moistures are at critically low levels and should be treated as fully cured/dead. Heavy fuels are dry to the point where they are receptive to embers and will burn to white ash.

Fire Behavior based on values for the fuel models shown.

Vegetation	Fuel Model	Max Rate of Spread	Flame Length
Grass/Shrub	GS3	94 ch/hr ~ 1.2 miles/hr	13 feet
Southern Rough	7	64 ch/hr ~ 0.8 miles/hr	9 feet
Timber Litter and Understory	TU2 / TL6	25 ch/hr ~ 0.3 miles/hr	5 feet

During peak burning expect **Spotting** distances up to **0.3 miles.**

Probability of Ignition Day = **68%**

In **15 minutes** a new spot fire or ignition during peak burn conditions could reach **2 acres** in an hour in sheltered timber and **16 acres** where grass/shrub and southern rough fuels are continuous.

Specific Areas of Concern:

All Divisions: Live fuels are dry enough to act as dead fuels and support fire spread in the same way. Isolated heats are still showing near lines these could develop into open flames and spread as needles and leaves continue to fall. Heavy fuels will continue to burn, unless mopped up or they burn out on their own.

Div A: There is the potential for significant fire spread due to the large amount of pine plantation south of State Rd 110. Northerly winds align with these areas.

Div F: North and northeast winds could encourage rapid fire spread on the west side of the division north of the railroad grade.

Div J: Isolated and scattered heat remain close to the lines. Areas of thick vegetation/fuels occur north of the Bridge Creek drainage. However, today's winds will push any fire back towards the black.

Div O and W: Isolated and scattered heat remain close to the lines. Northerly winds are of concern for Div W between State Rte 110 and State Rte 27.

Air Operations:

Generally good conditions for air operations. Increased smoke from interior or new starts may impact air operations.

Fire Behavior Safety Message

Recent observations indicate large-diameter surface fuels and ground fuels are burning more readily and holding heat longer due to record low 1000-hr fuel moisture and underlying drought. The time and effort needed for mop up will continue to increase as these fuels hold heat, especially with the forecast of continued very hot and mostly dry conditions.



Fuels and Fire Behavior Advisory

Central and East Texas, Southern Oklahoma, Far Southern Arkansas, Louisiana, Central and Southern Mississippi, Central and Southern Alabama and the Far Western Florida Panhandle
Date Advisory Effective – August 31, 2023

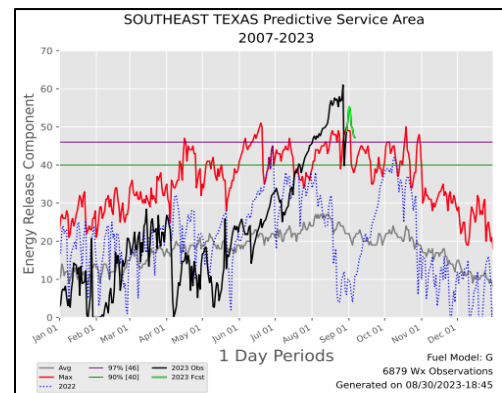
Subject: Persistent, record-breaking heat and well below normal rainfall have led to flash drought development across the Southern Area this summer. This rapid drought onset and underlying dryness have unlocked the availability of large dead fuels and live canopy fuels for combustion over an expanding portion of the geographic area. These fuels are contributing to fire behavior that increases the resistance to control for wildfires burning in high-risk pine timber and oak/juniper fuel beds across the advisory area.

Discussion: A persistent upper-level high pressure ridge produced the hottest June-to-August period on [record](#) from parts of Texas eastwards along the Gulf Coast, while hot and dry conditions have recently led to a rapid increase in abnormal dryness for adjacent areas farther to the north and east. Relentless 100-degree temperatures have contributed to an increase in fuel availability, which is resulting in very high fire intensities. Recent scattered rainfall may temporarily ease fuel dryness locally, but the return of abnormally hot and dry conditions is expected to accelerate moisture loss heading into September. Widespread, drought-busting rainfall is not currently anticipated through at least mid-September.

Difference from normal conditions: The footprint of Energy Release Component (ERC) values above the 90th percentile is forecast to expand as hot and dry conditions return to the advisory area. ERC-G in the [TAMFS](#) Southeast Texas PSA is trending above the 97th percentile and continues to track above the 16-year historical maximum. A drier, post-frontal air mass and the return of very hot temperatures is forecast to dry out fuels and increase ERC values in the areas of concern during much of the first half of September. Fire weather thresholds required to produce crown fire in high-risk timber and brush fuels are much lower with the fuel dryness indicated by 90th-percentile-or-greater ERCs. 100-degree temperatures, winds near 15 mph, and relative humidity (RH) near 25% in oak/juniper fuels near and west of I-35 and at or below 35% in pine-dominant or coastal fuels east of I-35 have been fire weather triggers. Established large fires in high risk fuels, such as Tiger Island in Louisiana, have burned intensely through the night despite RH recovery above 80%.

Concerns to Firefighters and the Public:

- Extreme fire line intensity is to be expected during both initial attack and extended attack.
- Typical barriers to fire spread, like roadways, rivers, and hardwood river bottoms cannot be relied upon to stop fire progression.
- Active fire behavior may extend into the overnight hours during periods of poor RH recovery.
- Spotting up to ¼ of a mile away has routinely been reported on the majority of recent fires, including small initial attack fires.
- Reburn of scorched needle cast in pine is now common during the days or weeks after suppression of small initial attack fires.
- Roots burning underground may result in green trees falling.
- Critical fire weather may be associated with but is not limited to: compressional warming in unstable pre-frontal environments, dry cold fronts, subsidence adjacent to tropical cyclones, sea breeze fronts and erratic winds associated with outflow from nearby thunderstorms.



ERC-G in Southeast Texas is forecast to remain above the 97th percentile this week.

Mitigation Measures:

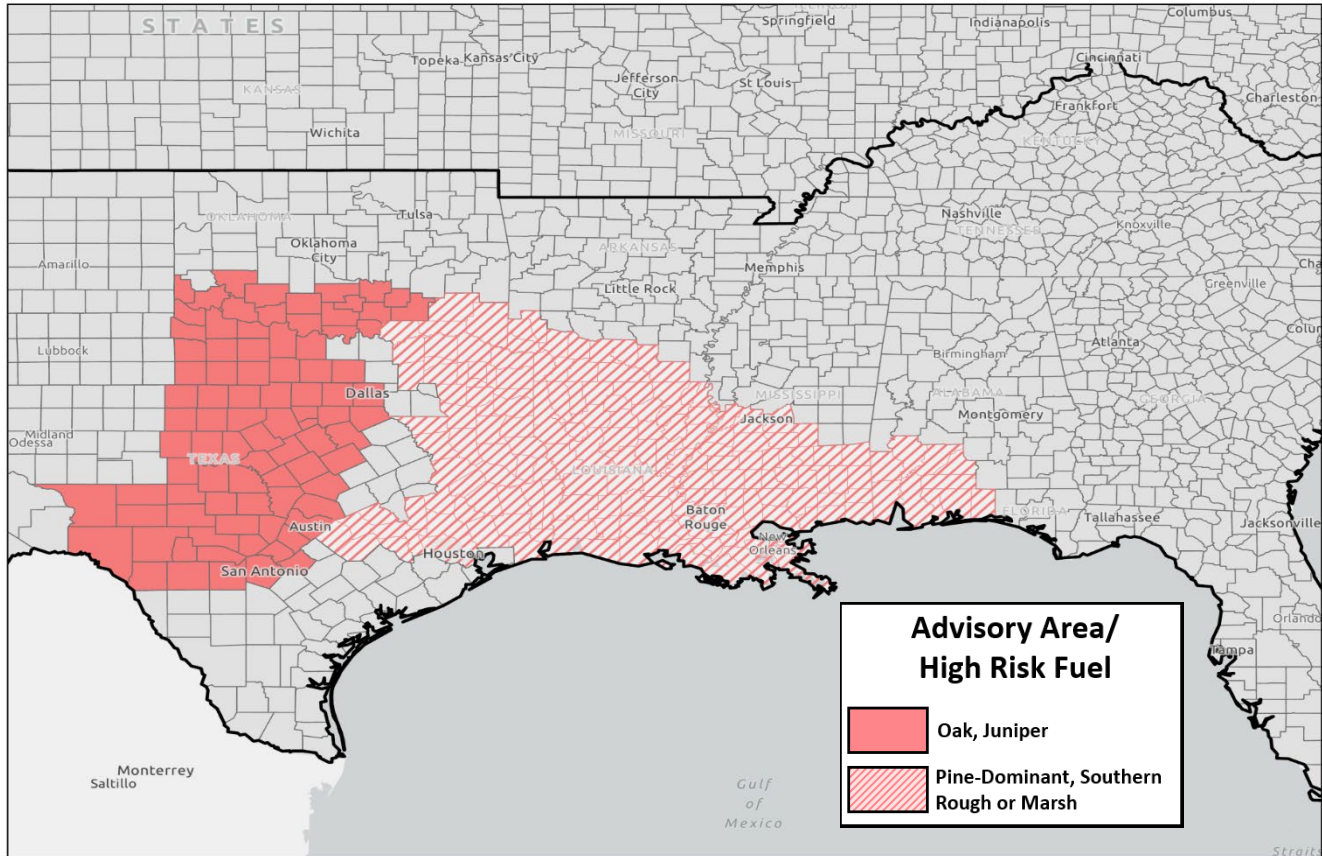
- Fire managers should be prepared to support periods of more frequent fire occurrence as well as complex, long-duration incidents.
- Firefighters should anticipate constructing wider than normal control lines, with dozers and graders (maintainers) working in tandem with engine support.
- Recent observations indicate large-diameter surface fuels and ground fuels are burning more readily and holding heat longer due to low 1000-hr fuel moisture and underlying drought. The time and effort needed for mop up will continue to increase as these fuels hold heat, especially with the forecast of continued very hot and mostly dry conditions.

Issued By: Southern Area Predictive Services in coordination with state and federal partners.

Fuels and Fire Behavior Advisory

Central and East Texas, Southern Oklahoma, Far Southern Arkansas, Louisiana, Central and Southern Mississippi, Central and Southern Alabama and the Far Western Florida Panhandle
Date Advisory Effective – August 31, 2023

Fuels and Fire Behavior Advisory



High risk oak/juniper and drought-cured grass loading on the Hill Top Fire south of Abilene, Texas (left). Torching in high risk pines adjacent to the roadside in Louisiana (right). Cured grasses near roads are a common carrier of fire into high risk fuels.



HEALTH AND SAFETY MESSAGE

“Safety saves sickness, suffering, sadness.”

INCIDENT: Tiger Island DATE: 09/01/2023 Operational Period: Day-Swing

Major Hazards and Risks:
1. Traffic and Driving 2. Fire Weakened Trees 3. Heat/Dehydration 4. Heavy Equipment Ops

Mopup is a critical phase in the suppression process because remaining burning debris may rekindle and threaten the integrity of the control line. However, it is also a hazardous task that requires firefighters to be cautious and vigilant. Some of the risks associated with mopup include:

- **Burn injuries:** Firefighters may suffer burn injuries from hot ash, embers, or other burning debris.
- **Falls:** mop up often involves working on steep slopes or uneven terrain, which can increase the risk of falls and injuries.
- **Smoke inhalation:** Smoke from smoldering debris can cause respiratory problems and other health issues.
- **Dehydration:** mop up is physically demanding work that can lead to dehydration if firefighters do not drink enough water.
- **Fatigue:** Firefighters may become fatigued after working long hours, which can increase the risk of accidents and injuries.
- **Airway Injuries:** Mop up is a dusty, dirty environment. Firefighters are usually leaning over the hot area while exposing the burning material or mixing in water causing dust and ash to rise into the air.

Mop-up PPE

- Nomex shirt and pants
- Hardhats
- Leather boots
- Leather gloves
- Eye Protection
- Hearing protection (Pump Use)

Risk Mitigations

- Wear PPE.
- Button shirts and roll down your sleeves.
- Remove overhead hazards.
- Use water when possible.
- If possible, remove hazard trees from work area.
- Maintain situational awareness.
- Take breaks and drink plenty of water.
- Avoid white ash pits where possible.
- Use a spotter to watch for hazards while others are engaged.
- Stay hydrated.
- Watch your step.

Risk Assessment



Incident Safety Officers: Brad Lidell, Joe Castro, Tommy Hawkings, Ed Bratcher(t), and Jason Rose(t)

Division/Group Assignment List (ICS 204 WF)
Controlled Unclassified Information//Basic

1. Incident Name:			3.			
TIGER ISLAND			Branch:		Division/Group	
2. Operational Period: DAY					A	
Date/Time From: 09/01/2023 0700 FRI		Date/Time To: 09/01/2023 1900 FRI				
4. Operations Personnel						
OPERATIONS CHIEF		P.MYERS, J.KOLAKS (T)		DIVISION/GROUP SUPERVISOR		O-48 MATT BENEDICT
AIR ATTACK SUPERVISOR						
5. Resources Assigned this Period						
Strike Team / Task Force / Resource Designator		LWD	Leader	Number Persons	Drop Off PT./Time	Pick Up PT./Time
E-69 ENG6 PLATTE CANYON FPD		09/14		3	DP60/0700	DP60/1900
E-5007 ENG6 NC-NCS		09/13	JOHN LAND	2	DP60/0700	DP60/1900
E-5008 ENG6 NC-NCS		09/13	ZACH JONES	2	DP60/0700	DP60/1900
WTS1 - DYNAMITE WATER		09/13	RANDY KOING	1	DP60/0700	DP60/1900
O-3.10 SOFC		09/10	JOE CASTRO	1	DP60/0700	DP60/1900
6. Control Operations/Work Assignments:						
TASK: Continue mop up operations along all perimeter lines.						
PURPOSE: Keep fire north of Hwy 100W and existing control lines. Complete mop up 100 feet in.						
END STATE: Residences and structures are protected. Fire remains within the current foot print.						
7. Special Instructions:						
WI IC						
<ul style="list-style-type: none"> • Take charge of scene • Contact Medic • Contact Div Sup & Tiger Island Communications as IWI IC • Follow Incident Medical Report • For back-up IWI communications with Tiger Island Communications call 208-891-6743 						
8. Division/Group Communication Summary						
Function	Channel	RX Frequency N/W	RX Tone/NAC	TX Frequency N/W	TX Tone/NAC	Mode
TACTICAL	1	168.0500N	110.9	168.0500N	110.9	A
COMMAND	10	170.9750N	110.9	168.7000N	110.9	A
AIR TO GROUND	13	168.4000N		168.4000N		A
AIR TO GROUND	14	166.6125N		166.6125N		A
9. Prepared By (Resource Unit Leader)			Approved By (Planning Section Chief)		Date	Time
RICH AUBUCHON			KELLY RUSSELL		08/31/2023	2200

Division/Group Assignment List (ICS 204 WF)

Controlled Unclassified Information//Basic

1. Incident Name:				3.		
TIGER ISLAND				Branch:	Division/Group	
2. Operational Period: DAY						
Date/Time From: 09/01/2023 0700 FRI		Date/Time To: 09/01/2023 1900 FRI		F		
4. Operations Personnel						
OPERATIONS CHIEF		P.MYERS, J.KOLAKS (T)		DIVISION/GROUP SUPERVISOR		DAVID ZUARES, JAKE GUADIANA (T)
AIR ATTACK SUPERVISOR						
5. Resources Assigned this Period						
Strike Team / Task Force / Resource Designator		LWD	Leader	Number Persons	Drop Off PT./Time	Pick Up PT./Time
C-1 HC1 CW1 SMOKEY BEAR		09/11	RUE, JESUS	21	DP20/0700	DP20/1900
E-6.1 STEN GA-GAS		09/09	MATT RYMER,	1	DP20/0700	DP20/1900
E-6.2 STEN GA-GAS		09/09	AUSTIN ROLAND (T)	1	DP20/0700	DP20/1900
E=6.5 ENGB (T) GA-GAS		09/09	SPIKES, SHAWN G	2	DP20/0700	DP20/1900
E-6.11 ENGB GA-GAS		09/09	REDDING, DOUG	2	DP20/0700	DP20/1900
E-6.12 ENGB GA=GAS		09/09	DAVID HODGES,	2	DP20/0700	DP20/1900
E6.15 ENGB (T)		09/09	JAMES FLOOD	2	DP20/0700	DP20/1900
E-6.18 ENGB (T) GA-GAS		09/09	JOSHUA BAKER	2	DP20/0700	DP20/1900
O-5001 STEN A-ALS		09/13	SHANE WOODHAM	1	DP20/0700	DP20/1900
E-5004 ENG6 NC-NCS		09/13	ANDY CRANFILL	2	DP20/0700	DP20/1900
E-5005 ENG6 NC-NCS		09/13	BENJAMIN KEENER	2	DP20/0700	DP20/1900
E-5006 ENG6 NC-NCS		09/13	DAVID HUFFMAN	2	DP20/0700	DP20/1900
E-50 WTS1 CO-CDFS		09/12	KYLE SIMPSON	1	DP20/0700	DP20/1900
E-23.1 STEQ SC-SCS		09/10	CHETT FOYLE	6	DP20/0700	DP20/1900
E-23.2 STEQ (T) SC-SCS			JOSHUA THOMPSON	1	DP20/0700	DP20/1900
E-23.3 TRP3 SC-SCS		09/12	GEORGE MARTIN	1	DP20/0700	DP20/1900
8. Division/Group Communication Summary						
Function	Channel	RX Frequency N/W	RX Tone/NAC	TX Frequency N/W	TX Tone/NAC	Mode
TACTICAL	2	168.2000N	110.9	168.2000N	110.9	A
COMMAND	10	170.9750N	110.9	168.7000N	110.9	A
AIR TO GROUND	13	168.4000N		168.4000N		A
AIR TO GROUND	14	166.6125N		166.6125N		A
9. Prepared By (Resource Unit Leader)			Approved By (Planning Section Chief)		Date	Time
RICH AUBUCHON			KELLY RUSSELL		08/31/2023	2200

Division/Group Assignment List (ICS 204 WF)
Controlled Unclassified Information//Basic

1. Incident Name:				3.		
TIGER ISLAND				Branch:	Division/Group F	
2. Operational Period: DAY						
Date/Time From: 09/01/2023 0700 FRI		Date/Time To: 09/01/2023 1900 FRI				
4. Operations Personnel						
OPERATIONS CHIEF		P.MYERS, J.KOLAKS (T)		DIVISION/GROUP SUPERVISOR		DAVID ZUARES, JAKE GUADIANA (T)
AIR ATTACK SUPERVISOR						
5. Resources Assigned this Period						
Strike Team / Task Force / Resource Designator		LWD	Leader	Number Persons	Drop Off PT./Time	Pick Up PT./Time
E-23.5 TRP3 SC-SCS		09/12	LEMONT WILLIAMS	1	DP20/0700	DP20/1900
E 23.11 TRP3 SC-SCS			BENJAMIN JORDAN	1	DP20/0700	DP20/1900
E-25.5 STEQ SC-SCS		09/10	CLAYTON HOWARD	1	DP20/0700	DP20/1900
E-25.6 TRP3 SC-SCS		09/10	BRIAN PARNELL	1	DP20/0700	DP20/1900
E-25.7 TRP3 SC-SCS		09/10	JOSEPH LEMON	1	DP20/0700	DP20/1900
E-25.8 TRP3 SC-SCS		09/10	JAMES ZELANAK	1	DP20/0700	DP20/1900
E-25.9 TRP3 SC-SCS		09/10	WILLIAM YONCE	1	DP20/0700	DP20/1900
* E-26.1 STEQ SC-SCS		09/12	LEE WEAVER	2	DP20/0700	DP20/1900
E-26.5 TRP3 GA-GAS		09/12	AARON PLAYER	1	DP20/0700	DP20/1900
E-26.8 TRP3 GA-GAS		09/12	TIM MYERS	1		
E-4.1 STDZ GA-GAS			MARCUS BEASELY	3	DP20/0700	DP20/1900
E-4.1 STEQ GS-GAS			MARCUS BEASELY		DP20/0700	DP20/1900
E-4.5 TRP3 GA-GAS			KEITH MBULO	1	DP20/0700	DP20/1900
E-4.8 GA-GAS			BARRY BOHANNON	1	DP20/0700	DP20/1900
O-3.10 SOFC		09/10	JOE CASTRO	1	DP20/0700	DP20/1900
8. Division/Group Communication Summary						
Function	Channel	RX Frequency N/W	RX Tone/NAC	TX Frequency N/W	TX Tone/NAC	Mode
TACTICAL	2	168.2000N	110.9	168.2000N	110.9	A
COMMAND	10	170.9750N	110.9	168.7000N	110.9	A
AIR TO GROUND	13	168.4000N		168.4000N		A
AIR TO GROUND	14	166.6125N		166.6125N		A
9. Prepared By (Resource Unit Leader)			Approved By (Planning Section Chief)		Date	Time
RICH AUBUCHON			KELLY RUSSELL		08/31/2023	2200

Division/Group Assignment List (ICS 204 WF)

Controlled Unclassified Information//Basic

1. Incident Name:			3.			
TIGER ISLAND			Branch:		Division/Group	
2. Operational Period: DAY						
Date/Time From: 09/01/2023 0700 FRI		Date/Time To: 09/01/2023 1900 FRI		F		
4. Operations Personnel						
OPERATIONS CHIEF		P.MYERS, J.KOLAKS (T)		DIVISION/GROUP SUPERVISOR		DAVID ZUARES, JAKE GUADIANA (T)
AIR ATTACK SUPERVISOR						
5. Resources Assigned this Period						
Strike Team / Task Force / Resource Designator		LWD	Leader	Number Persons	Drop Off PT./Time	Pick Up PT./Time
0-79 SOFR		09/12	MARTEL KNIPE	1	DP20/0700	DP20/1900
O-84 EMPF		09/11	JASON OLSON	1	DP20/0700	DP20/1900
AMBULANCE LA 009			CHAD BURDEN	1	DP20/0700	DP20/1900
E-45 MEDIC TEAM		09/12	CODY ANDREWS	2	DP20/0700	DP20/1900
E-4.5 TRLP3 GA-GAS			KEATH MBULO	1	DP20/0700	DP20/1900
E-4.8 TRP3 GA-GAS			BARRY BOHANNON	1	DP20/0700	DP20/1900
6. Control Operations/Work Assignments:						
<p>TASK: Reinforce dozer lines as direct as possible where needed to complete containment and make traversable by type 6 engine.</p> <p>Burn out when necessary as opportunity and resources present themselves with ops approval. Mop up perimeter edge 100 foot.</p> <p>PURPOSE: Keep fire north of Frazier Rd., east of the Hwy 190 corridor and south of Whiddon Rd and Shinn Rd.</p> <p>END STATE: Protection of Merryville, residences, structures and to provide the ability of residences a return to their homes.</p>						
7. Special Instructions:						
<p>WI IC</p> <ul style="list-style-type: none"> Take charge of scene Contact Medic Contact Div Sup & Tiger Island Communications as IWI IC Follow Incident Medical Report For back-up IWI communications with Tiger Island Communications call 208-891-6743 						
8. Division/Group Communication Summary						
Function	Channel	RX Frequency N/W	RX Tone/NAC	TX Frequency N/W	TX Tone/NAC	Mode
TACTICAL	2	168.2000N	110.9	168.2000N	110.9	A
COMMAND	10	170.9750N	110.9	168.7000N	110.9	A
AIR TO GROUND	13	168.4000N		168.4000N		A
AIR TO GROUND	14	166.6125N		166.6125N		A
9. Prepared By (Resource Unit Leader)			Approved By (Planning Section Chief)		Date	Time
RICH AUBUCHON			KELLY RUSSELL		08/31/2023	2200

Division/Group Assignment List (ICS 204 WF)
Controlled Unclassified Information//Basic

1. Incident Name:				3.		
TIGER ISLAND				Branch:	Division/Group J	
2. Operational Period: DAY						
Date/Time From: 09/01/2023 0700 FRI		Date/Time To: 09/01/2023 1900 FRI				
4. Operations Personnel						
OPERATIONS CHIEF		P.MYERS, J.KOLAKS (T)		DIVISION/GROUP SUPERVISOR		DAVE WALKER, JOSH HAVIRD (T)
AIR ATTACK SUPERVISOR						
5. Resources Assigned this Period						
Strike Team / Task Force / Resource Designator		LWD	Leader	Number Persons	Drop Off PT./Time	Pick Up PT./Time
E-12 ENG6 MTHLF E6121 HELENA RD		09/12	MIKE STANAWAY	7	DP40/0700	DP40 /1900
E-29 ENG6 KYS		09/10	SUSAN NIGHTINGALE	2	DP40/0700	DP40 /1900
E-30 ENG6 KYS		09/10	JASON HUNT	3	DP40/0700	DP40 /1900
E-31 ENG6 KYS		09/10	TEENA DUNN	3	DP40/0700	DP40 /1900
E-32 ENG6 KYS		09/10	ED STEPHENS	2	DP40/0700	DP40 /1900
E-48 WTS1 CO-RO2		09/12	JEREMIAH GRIFIN	1	DP40/0700	DP40 /1900
E-5.1 STEQ GA-GAS		09/10	MARK PEEPLES	5	DP40/0700	DP40 /1900
E-5.3 TRPS GA-GAS		09/10	DOUGLAS SPIETH	1	DP40/0700	DP40 /1900
E-5.7 TRP3 GA-GASMOORE, ROBERT E		09/10	ROBERT MOORE	1	DP40/0700	DP40 /1900
E-5.10 TRP3 GA-GAS		09/10	CALEB MCGAHEE	1	DP40/0700	DP40 /1900
E-22 TRP3		09/10	DEWAYNE ANDERSON	1	DP40/0700	DP40 /1900
O-3.10 SOFC		09/10	JOE CASTRO	1	DP40/0700	DP40 /1900
O-65 SOF2		09/05	STEVEN DAVIS	1	DP40/0700	DP40 /1900
AMBULANCE LA 021			CAROLYN CHISHOLM	2	DP40/0700	DP40 /1900
E-42 AMBU 1			MORGAN HOOVER	2	DP40/0700	DP40 /1900
E-45 MESU (OZARK MEDICS)		09/12	CODY ANDREWS	2	DP40/0700	DP40 /1900
8. Division/Group Communication Summary						
Function	Channel	RX Frequency N/W	RX Tone/NAC	TX Frequency N/W	TX Tone/NAC	Mode
TACTICAL	3	168.6000N	110.9	168.6000N	110.9	A
COMMAND	10	170.9750N	110.9	168.7000N	110.9	A
AIR TO GROUND	13	168.4000N		168.4000N		A
AIR TO GROUND	14	166.6125N		166.6125N		A
9. Prepared By (Resource Unit Leader)			Approved By (Planning Section Chief)		Date	Time
RICH AUBUCHON			KELLY RUSSELL		08/31/2023	2200

Division/Group Assignment List (ICS 204 WF)
Controlled Unclassified Information//Basic

1. Incident Name:			3.			
TIGER ISLAND			Branch:		Division/Group	
2. Operational Period: DAY					J	
Date/Time From: 09/01/2023 0700 FRI		Date/Time To: 09/01/2023 1900 FRI				
4. Operations Personnel						
OPERATIONS CHIEF		P.MYERS, J.KOLAKS (T)		DIVISION/GROUP SUPERVISOR		DAVE WALKER, JOSH HAVIRD (T)
AIR ATTACK SUPERVISOR						
6. Control Operations/Work Assignments:						
TASK: Mop up along direct dozer lines 100 foot. I Monitor hardwood bottom along north end of division.						
PURPOSE: Structures are protected to withstand advancing fire and progression to north and east is halted.						
END STATE: Structures protected and fire remains within the current footprint.						
7. Special Instructions:						
WI IC						
<ul style="list-style-type: none"> • Take charge of scene • Contact Medic • Contact Div Sup & Tiger Island Communications as IWI IC • Follow Incident Medical Report • For back-up IWI communications with Tiger Island Communications call 208-891-6743 						
8. Division/Group Communication Summary						
Function	Channel	RX Frequency N/W	RX Tone/NAC	TX Frequency N/W	TX Tone/NAC	Mode
TACTICAL	3	168.6000N	110.9	168.6000N	110.9	A
COMMAND	10	170.9750N	110.9	168.7000N	110.9	A
AIR TO GROUND	13	168.4000N		168.4000N		A
AIR TO GROUND	14	166.6125N		166.6125N		A
9. Prepared By (Resource Unit Leader)			Approved By (Planning Section Chief)		Date	Time
RICH AUBUCHON			KELLY RUSSELL		08/31/2023	2200

Division/Group Assignment List (ICS 204 WF)
Controlled Unclassified Information//Basic

1. Incident Name:			3.			
TIGER ISLAND			Branch:		Division/Group	
2. Operational Period: DAY					O/W	
Date/Time From: 09/01/2023 0700 FRI		Date/Time To: 09/01/2023 1900 FRI				
4. Operations Personnel						
OPERATIONS CHIEF		P.MYERS, J.KOLAKS (T)		DIVISION/GROUP SUPERVISOR		LISA LONCAR GARRISON LUPTON
AIR ATTACK SUPERVISOR						
5. Resources Assigned this Period						
Strike Team / Task Force / Resource Designator		LWD	Leader	Number Persons	Drop Off PT./Time	Pick Up PT./Time
HEQB (FROM CW1-SMOKEY BEAR)		09/05	ANDY MASON	1	DP60/0700	DP60/1900
HEQB (FROM CW1-SMOKEY BEAR)		09/05	GARRETT NUTTING	1	DP60/0700	DP60/1900
E-13 ENG6 - SGS NORTH WEST		09/14	SCOTT SHERLOCK	2	DP60/0700	DP60/1900
E14 ENG6 BLACK MESA		09/11	GORDON HENDERSON	4	DP60/0700	DP60/1900
E-70 ENG6 WYCO ENGINE 1		09/14	RANDY PAFFORD	3	DP60/0700	DP60/1900
E-47 WTS1 MONTROSE HELLFIGHTERS		09/13	JERRY BECKER	1	DP60/0700	DP60/1900
STDZ NAT GUARD			CAPTAIN LEWIS	1	DP60/0700	DP60/1900
DOZ1 NAT GUARD				2	DP60/0700	DP60/1900
DOZ1 NAT GUARD				3	DP60/0700	DP60/1900
DOZ1 NAT GUARD				3	DP60/0700	DP60/1900
DOZ1 NAT GUARD				3	DP60/0700	DP60/1900
SOFC		09/10	JOE CASTRO	1	DP60/0700	DP60/1900
0-66 SOF2		09/13	JONATHAN LEE	1	DP60/0700	DP60/1900
AMBULANCE LA 018		09/13	PARRISH WALLACE	1	DP60/0700	DP60/1900
6. Control Operations/Work Assignments:						
TASK: Mop up 100 feet interior from perimete line.						
8. Division/Group Communication Summary						
Function	Channel	RX Frequency N/W	RX Tone/NAC	TX Frequency N/W	TX Tone/NAC	Mode
TACTICAL	4	166.7250N	110.9	166.7250N	110.9	A
COMMAND	10	170.9750N	110.9	168.7000N	110.9	A
AIR TO GROUND	13	168.4000N		168.4000N		A
AIR TO GROUND	14	166.6125N		166.6125N		A
9. Prepared By (Resource Unit Leader)			Approved By (Planning Section Chief)		Date	Time
RICH AUBUCHON			KELLY RUSSELL		08/31/2023	2200

Division/Group Assignment List (ICS 204 WF)

Controlled Unclassified Information//Basic

1. Incident Name:			3.			
TIGER ISLAND			Branch:	Division/Group O/W		
2. Operational Period: DAY						
Date/Time From: 09/01/2023 0700 FRI		Date/Time To: 09/01/2023 1900 FRI				
4. Operations Personnel						
OPERATIONS CHIEF		P.MYERS, J.KOLAKS (T)		DIVISION/GROUP SUPERVISOR		LISA LONCAR GARRISON LUPTON
AIR ATTACK SUPERVISOR						
6. Control Operations/Work Assignments:						
PURPOSE: Structures are protected to withstand advancing fire and progression to north and east is halted.						
END STATE: Structures protected and fire remains within the current footprint.						
7. Special Instructions:						
WI IC						
<ul style="list-style-type: none"> Take charge of scene Contact Medic Contact Div Sup & Tiger Island Communications as IWI IC Follow Incident Medical Report For back-up IWI communications with Tiger Island Communications call 208-891-6743 						
8. Division/Group Communication Summary						
Function	Channel	RX Frequency N/W	RX Tone/NAC	TX Frequency N/W	TX Tone/NAC	Mode
TACTICAL	4	166.7250N	110.9	166.7250N	110.9	A
COMMAND	10	170.9750N	110.9	168.7000N	110.9	A
AIR TO GROUND	13	168.4000N		168.4000N		A
AIR TO GROUND	14	166.6125N		166.6125N		A
9. Prepared By (Resource Unit Leader)			Approved By (Planning Section Chief)		Date	Time
RICH AUBUCHON			KELLY RUSSELL		08/31/2023	2200

Division/Group Assignment List (ICS 204 WF)
Controlled Unclassified Information//Basic

1. Incident Name:			3.			
TIGER ISLAND			Branch:		Division/Group	
2. Operational Period: DAY					STRUCTURE GROUP	
Date/Time From: 09/01/2023 0700 FRI	Date/Time To: 09/01/2023 1900 FRI					
4. Operations Personnel						
OPERATIONS CHIEF		P.MYERS, J.KOLAKS (T)		DIVISION/GROUP SUPERVISOR		* CRAIG ROBERTSON
AIR ATTACK SUPERVISOR						
5. Resources Assigned this Period						
Strike Team / Task Force / Resource Designator		LWD	Leader	Number Persons	Drop Off PT./Time	Pick Up PT./Time
SOFC		09/10	JOE CASTRO	1		
6. Control Operations/Work Assignments:						
Working in coordination with local and state fire departments. Support division structure needs.						
7. Special Instructions:						
Coordinate with LA IST Resources. Support division structure needs.						
WI IC						
<ul style="list-style-type: none"> • Take charge of scene • Contact Medic • Contact Div Sup & Tiger Island Communications as IWI IC • Follow Incident Medical Report • For back-up IWI communications with Tiger Island Communications call 208-891-6743 						
8. Division/Group Communication Summary						
Function	Channel	RX Frequency N/W	RX Tone/NAC	TX Frequency N/W	TX Tone/NAC	Mode
TACTICAL	5	166.7750N	110.9	166.7750N	110.9	A
COMMAND	10	170.9750N	110.9	168.7000N	110.9	A
AIR TO GROUND	13	168.4000N		168.4000N		A
AIR TO GROUND	14	166.6125N		166.6125N		A
9. Prepared By (Resource Unit Leader)			Approved By (Planning Section Chief)		Date	Time
RICH AUBUCHON			KELLY RUSSELL		08/31/2023	2200

Division/Group Assignment List (ICS 204 WF)
Controlled Unclassified Information//Basic

1. Incident Name:				3.		
TIGER ISLAND				Branch:	Division/Group	
2. Operational Period: SWING SHIFT						
Date/Time From: 09/01/2023 1200 FRI		Date/Time To: 09/01/2023 2350 FRI		SWING SHIFT		
4. Operations Personnel						
OPERATIONS CHIEF MARK JAMIESON		DIVISION/GROUP SUPERVISOR DEREK HOBAN, BRIAN KEATING JOE NAMES				
AIR ATTACK SUPERVISOR						
5. Resources Assigned this Period						
Strike Team / Task Force / Resource Designator	LWD	Leader	Number Persons	Drop Off PT./Time	Pick Up PT./Time	
* E-27 ENG6 SC	09/10	BEN KINDLE	1			
* E-28 ENG6 SC	09/10	THOMAS WILKINS	1			
E-5000.3ENG6 NCNCS	09/13	JONATHAN PAYNE	2			
E-49 WTS1 310 DUST CONTROL	09/14	ANDREW WITTE	1			
* E-24.5 STEQ SC-SCS	09/10	WILLIAM PRESSLEY	1			
E-24.6 TRP3 SC-SCSNEWCOMB, BUCK D	09/10	BUCK NEWCOMB	1			
E-24.7 TRP3 SC-SCS	09/10	JAMES POLIN	1			
E-24.8 TRP3 SC-SCS	09/10	RANDALL HILL	1			
E-24.9 TRP3 SC-SCS	09/10	RUSSELL HALE	1			
* E-3.1 STEQ GA-GAS	09/10	KEN WELLS	1			
E-3.5 TRP3 GA-GAS	09/10	EVAN HYERS	1			
E-3.8 TRP3 GA-GAS	09/10	BLAIR KIRKSEY,	1			
O-3.9 SOFC	09/09	TOMMY HAWKINS	1			
AMBULANCE 013		JESSICA TRICHEL	1			
AMBULANCE LA 010		KARL MANN	1			
6. Control Operations/Work Assignments:						
8. Division/Group Communication Summary						
Function	Channel	RX Frequency N/W	RX Tone/NAC	TX Frequency N/W	TX Tone/NAC	Mode
TACTICAL	1	168.0500N	110.9	168.0500N	110.9	A
COMMAND	10	170.9750N	110.9	168.7000N	110.9	A
AIR TO GROUND	13	168.4000N		168.4000N		A
AIR TO GROUND	14	166.6125N		166.6125N		A
9. Prepared By (Resource Unit Leader)		Approved By (Planning Section Chief)		Date	Time	
RICH AUBUCHON		KELLY RUSSELL		08/31/2023	2200	

Division/Group Assignment List (ICS 204 WF)
Controlled Unclassified Information//Basic

1. Incident Name:			3.			
TIGER ISLAND			Branch:	Division/Group		
2. Operational Period: SWING SHIFT						
Date/Time From: 09/01/2023 1200 FRI		Date/Time To: 09/01/2023 2350 FRI		SWING SHIFT		
4. Operations Personnel						
OPERATIONS CHIEF MARK JAMIESON		DIVISION/GROUP SUPERVISOR DEREK HOBAN, BRIAN KEATING JOE NAMES				
AIR ATTACK SUPERVISOR						
6. Control Operations/Work Assignments:						
<p>TASK: Assess and engage resources as needed along perimeter to safely contain the fire line. Utilize LA Fire Marshal to assist in protecting improvements and provide identified structure protection needs.</p> <p>PURPOSE: Maintain current fire boundaries.</p> <p>END STATE: Residences, structures are protected and fire remains within the current footprint.</p>						
7. Special Instructions:						
<p>LA-State employ spotters to maintain personell accountability. Always position resources for rapid egress.</p> <p>WI IC</p> <ul style="list-style-type: none"> • Take charge of scene • Contact Medic • Contact Div Sup & Tiger Island Communications as IWI IC • Follow Incident Medical Report • For back-up IWI communications with Tiger Island Communications call 208-891-6743 						
8. Division/Group Communication Summary						
Function	Channel	RX Frequency N/W	RX Tone/NAC	TX Frequency N/W	TX Tone/NAC	Mode
TACTICAL	1	168.0500N	110.9	168.0500N	110.9	A
COMMAND	10	170.9750N	110.9	168.7000N	110.9	A
AIR TO GROUND	13	168.4000N		168.4000N		A
AIR TO GROUND	14	166.6125N		166.6125N		A
9. Prepared By (Resource Unit Leader)			Approved By (Planning Section Chief)		Date	Time
RICH AUBUCHON			KELLY RUSSELL		08/31/2023	2200

Controlled Unclassified Information/Basic

ICS 205

INCIDENT RADIO COMMUNICATIONS PLAN				Incident Name TIGER ISLAND FIRE		Date/Time Prepared: September 2023, 1800 HRS		Operational Period Date/Time From: 09/01/23 0700 HRS To: 09/01/23 2400 HRS			
Ch #	Function	Channel Name/Trunked Radio System Talk Group	Assignment	RX Freq	N or W	RX Tone/NAC	TX Freq	N or W	Tx Tone/NAC	Mode	Remarks
1	TAC	TAC 1	DIV ANIGHT	168.0500N		110.9	168.0500N		110.9	A	
2	TAC	TAC 2	DIV F	168.2000N		110.9	168.2000N		110.9	A	
3	TAC	TAC 3	DIV J	168.6000N		110.9	168.6000N		110.9	A	
4	TAC	TAC 4	DIV OW	166.7250N		110.9	166.7250N		110.9	A	
5	TAC	TAC 5	STRUCTURE GROUP	166.7750N		110.9	166.7750N		110.9	A	
6											
7	TAC	D4 WEST TALK		151.3700N		110.9	151.3700N		110.9	A	Local and State units
8	TAC	WEST FIRE 1		151.4000N		110.9	151.4000N		110.9	A	Local and State units
9	TAC	VFIRE 21		154.2800N		156.7	154.2800N		156.7	A	Local and State units
10	COMMAND	CMD 1	ALL DIVS	170.9750N		110.9	168.7000N		110.9	A	Command Repeater for Tiger Island
11											
12											
13	AIR TO GROUND	A/G PRI	A/G PRIMARY	168.4000N			168.4000N			A	Air to Ground Primary
14	AIR TO GROUND	A/G SEC	A/G SECONDARY	166.6125N			166.6125N			A	Air to Ground Secondary
15											
16	AIR GUARD	AIRGUARD	ALL	168.6250N		110.9	168.6250N		110.9	A	Air Guard
5. Prepared by (Communications Unit) Jerry W Patrick, COM1				Incident Location: TIGER ICP County/State LA				Latitude / Longitude: ° / °			

The convention calls for frequency lists to show four digits after the decimal place, followed by either an "N" or a "W", depending on whether the frequency is narrow or wide band. Mode refers to either "A" or "D" indicating analog or digital (Project 25).

***** Special Instructions: Use Human Repeater When Necessary.**

AIR OPERATIONS SUMMARY

Prepared By: Darlene Hall

Prepared Date/Time:

8/31/2023

1. INCIDENT NAME: Tiger Island Fire	2. OPERATIONAL PERIOD DATE: 9/1/2023	Start Time 7:00	End Time 20:00	Sunrise 6:49	Sunset 19:38
---	--	--------------------	-------------------	-----------------	-----------------

3. REMARKS (Safety Notes, Hazards, Air Operations Special Equipment, etc.): Helibase Location: Beauregard Regional Airport Tiger Island Helibase 30° 49.541N / 93° 20.241W	5. TFR DESCRIPTION: TFR #- 3/3287 Freq- 120.600 Polygon 3,000' MSL 30, 50.36N / 93, 35.40W 30, 42.50N / 93, 27.11 W 30, 42.46N / 93, 16.40W 30, 36.28N / 93 16.52W 30, 36.31N / 93 35.31W
---	--



4. MEDEVAC A/C: Med Air Refer to Medical Plan	Email cost summaries to: 2023.tigerisland.finance@firenet.gov
---	---

6. PERSONNEL	Phone	7. FREQUENCIES	AM	FM	8. FIXED-WING (# Avail/Type/Make-Model/FAA #/Bases)
AOBD	Darlene Hall	AAA Primary	120.600		Air tankers
		AAA Secondary	134.975		
ASGS-T	Clint Davis	AVG Primary		166.400	SEATS
		AVG Secondary		166.6125	Other: Scoopers
HEBM	Jake Pastorius	AVG Secondary			Air Attack
HEBM-T	Cameron Magenck	Command			57LF Available @ LCH 8PQ Available @ DRI
		DIVs Contact Military			
HMGB-0MB	Peter McDermitt	Helicopters on the State Radio			
HMGB-5PJ	Jason Noid	DECK		163.1000	
HMGB-47V	Daniel Patterson				
HMGB-8MG	John Ortega				

9. HELICOPTERS (Use Additional Sheets As Necessary)													
FAA #	TYPE	MAKE/MODEL	BASE	AVAIL	START	REMARKS	FAA #	TYPE	MAKE/MODEL	BASE	AVAIL	START	REMARKS
OMB	1	Kmax	DRI	0700	0730	Buckets	Guard	1	UH-60A	KESF	0900	0930	
5PJ	1	UH-60A	DRI	0700	0730	Buckets	Guard	1	UH-60A	KESF	0900	0930	
760HT	1	S-61	DRI	0700	0730	Buckets	Guard	1	UH-60A	KESF	0900	0930	
47V	2	58T	DRI	0700	0730	Buckets	Guard	1	UH-60A	KESF	0900	0930	
353RC	2	In Route	DRI										
8MG	3	AS350	DRI	0700	0730	Recon & Missions							

ICS-220

FINANCE

Finance Processes:

- **If you are an AD**, we need a copy of your **Casual Hire** form & **Resource Order**.
- **If you are a Cooperator or Contractor**, we need a copy of your **Agreement/Contract** and **Resource Order**.
- **All Contract/Cooperator Equipment** needs to have a **Pre-Use Inspection** form.
- **If you are a Crew**, we need a copy of your **Manifest** as well as the documents mentioned above.
- **If you are an Overhead Resource**, we need a copy of your Resource Order.



ALL: Please email your CTRs, Shift Tickets and any of the documents mentioned above as a PDF or JPEG to: 2023.tigerisland.finance@firenet.gov

In the SUBJECT LINE put OVERHEAD with O# or EQUIPMENT with E# to help identify the content in the email.

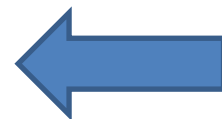


Finance Fire Codes

FWS Code: FFF2500000QK8T0

NPS Code: PP.FSQK8TD23.00.1

USFS code: (1522) PNQK8T



The finance staff will attend all briefings. If you have any questions or need assistance in submitting your information!

Training Message

ALL Trainees:

If you are working as a trainee on the Tiger Island Fire, no matter the position, please check in with the Training Specialist. Bring your Task Book, your red card, your Order #, and your coach/evaluator to the Training Specialist at the Check-In table inside the front door in the ICP.

This will take you less than 5 minutes. It will help us track numbers and positions and it will produce a good training packet that will be emailed to the person you designate to document your experience.

Greg Seamon
Training Specialist
08/30/2023

TIGER ISLAND INCIDENT

LA-LAS-000252

DEMOBILIZATION CHECK-OUT PROCESS

This incident is using a virtual checkout process for demobilization. **Please do not leave the incident until the following steps have been completed!**

1. **24 hours prior** to demobilization date, please ensure that:
Your incident supervisor has submitted a [Demob Request Form](#).
 - in coordination with the Demob unit.
 - If you need a flight arranged for you, please submit a [Flight](#) Request Form.
2. **On your demob date**, please check out with the following units.
 - Supply Unit – Return gear and supplies.
 - Ground Support/Weed Wash – Return pool NERV rentals, receive inspections, etc.
 - Communications Unit – Return Radios and other communications equipment.
 - Time/Finance – Ensure that all CTRs and/or shift tickets have been submitted and **you have received your final, signed OF-288 Time Report or OF-286 invoice.**
3. **Once you have completed the above steps**, please fill out the [Demob Check Form](#) and contact the Demob Unit Leader to confirm your release from the incident. **PLEASE DO NOT FILL OUT THE DEMOB RELEASE FORM UNTIL ALL PRIOR STEPS BEEN COMPLETED!**
Demob Unit Leader: (480) 420-7735, 2023.tigerisland.demob@firenet.gov



Demob Request Form



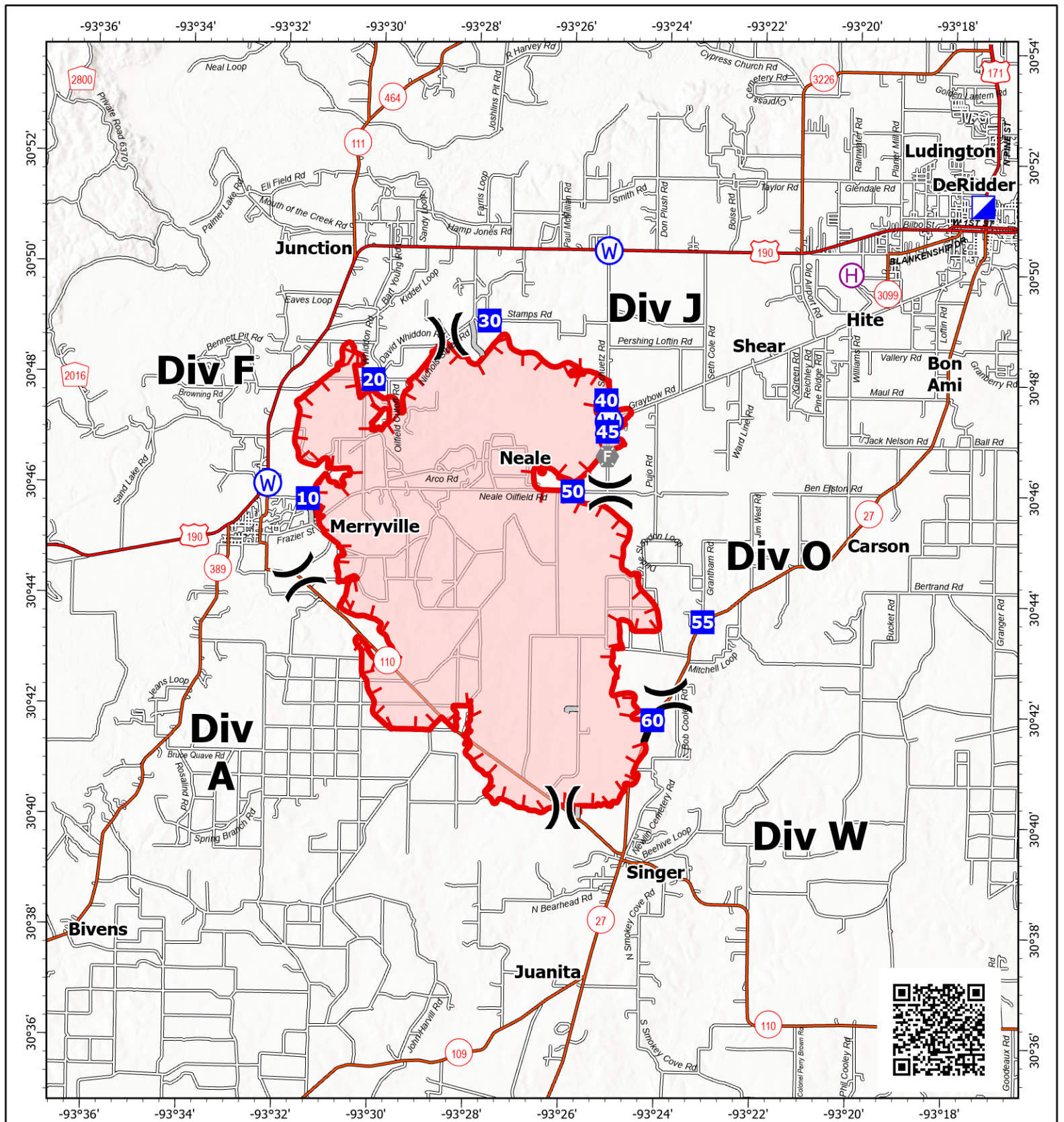
Flight Request Form



Demob Release Form

Tiger Island ICP Map

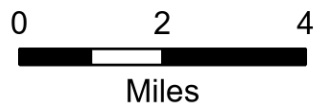
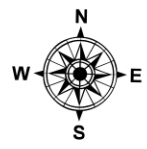




IAP Map

Tiger Island
LA-LAS-000252

September 1, 2023 Day
31,342 acres at August 29, 2023 0345



- Helibase
- Division Break
- Incident Command Post
- Drop Point
- Fire Station
- Water Source
- Access or Improved Road
- Contained
- Uncontained
- Wildfire Daily Fire Perimeter

1:170,000 | SA Red Team GIS | 8/31/2023 1802
Acres from IR and GPS
North American 1983 Datum. LatLong Grid

MEDICAL PLAN (ICS 206 WF)

Controlled Unclassified Information//Basic

For medical emergencies use CMD Repeater or (208) 891-6743.

1. Incident/Project Name				2. Operational Period							
Tiger Island				09/01/23 – 09/02/23							
2. Medical Aid Stations											
Medical Aid Stations		Location			Advanced Life Support (ALS)						
					Yes	No					
3. Ambulance Services											
Name		Location		Phone		Advanced Life Support (ALS)					
						Yes	No				
LA 009		Day - Division F		Contact Tiger Island Communications		X					
LA 018		Day - Division O/W				X					
LA 021		Day - Division J				X					
Ambu 1 (Fireline)		Day – Division J					X				
LA 013		Swing Division				X					
LA 010		Swing Division				X					
Local EMS		<i>For emergencies outside of incident</i>		911		X					
4. Air Ambulance Services											
Name		Location, Capabilities				Advanced Life Support (ALS)					
						Yes	No				
Coast Guard New Orleans Sector (504) 589-6225		2-2.5 hr response time Hoist, Night Vision, BLS Houston or New Orleans					X				
Acadian Air Med (337) 291-1594		Woodworth, LA Lat/Long 31° 05.820', -92° 17.694'				X					
Acadian Air Med (337) 291-1594		Lake Charles Regional Airport Lat/Long 30° 04.404', -93° 08.502'				X					
5. Hospitals											
Name/Address		GPS Datum – WGS 84 Coordinate Standard		Travel Time Air Gnd		Phone		Helipad Yes No		Level of Care Facility	
Ochsner LSU Health Shreveport 1541 Kings Highway Shreveport, LA 71103		Lat: 32° 29.724',		40 min	113 min	(318) 626-0000	X			L1 Trauma, STEMI, Stroke, Burn Center	
		Long: -93° 45.000'									
Beauregard Health Center 600 S Pine St, DeRidder, LA 70634		Lat: 30° 50.461'		20 min	40 min	(337) 462-7100	LZ			Basic ER	
		Long: -93° 17.250'									
		VHF:									
Rapides Regional Medical 211 4th St Alexandria, LA 71301		Lat: 34° 43.566'		30 min	105 min	(318) 769-3000	X			L2 Trauma, STEMI	
		Long: -76° 45.307'									
		VHF:									
University Medical Center 2000 Canal St. New Orleans, LA 70112		Lat: 29° 57.561'		100 min	4 hrs	(504) 702-3000	X			L1 Trauma, STEMI, Stroke, Burn Center	
		Long: -90° 4.964'									
		VHF:									
6. Clinics											
Outpatient Medical Center		908 S 10th St Suite B, Leesville, LA (337) 238-1274 (0800-1800 Mon, Tue, Thu; 0800-1700 Wed; 0800-1300 Fri)									

8. Prepared By (Medical Unit Leader)		9. Date/Time		10. Reviewed by (Safety Officer)	
Nick Arnett, MEDL (408) 888-1900 Rich D'Orazio, MEDL 239-249-1855		8/31/2023		Jason Rose SOFC(t)	

IWI IC Responsibilities – Division Group Supervisor or Point of Contact

- Take charge of the scene – inform the Division Supervisor and Tiger Island Communications that you are the IWI IC and establish radio communications (frequencies, channels). Identify the emergency name – Division A medical, etc.
- **For backup IWI communication, call the IWI phone: (208) 891-6743.**
- Assign or begin patient assessment (Medical Incident Report - MIR) and first aid. Request additional medical resources on division/branch or across incident. Transmit MIR patient information to Communications.
- Determine patient transportation through consultation with line medical personnel and Medical Unit Leader. Consider transportation time, risk to personnel, destination facility and available operational resources. If air transport is chosen, implement the plan for alternative transportation in the event aircraft cannot complete the mission. Order transportation resources through Communications as early as possible.
- Notify Communications as resources arrive and any patient status changes. Names of injured or deceased individuals will not be transmitted on the radio.
- Initiate documentation for future investigation; if a line safety officer is available, assign them to lead documentation. Do not move deceased individuals, gear or personal effects except to accomplish rescue work or protect the safety of others. Obtain written documentation of witnesses. The Unit Log, ICS 214, may be used for the initial documentation, but a subsequent narrative will be required.
- As appropriate, conduct an After Action Review to determine successes, areas to improve and lessons learned.

7. Division Branch Group	Area Location Capability	
Div A	EMS Responders & Capability:	<i>None Assigned</i>
Div F	EMS Responders & Capability:	Ambulance: LA 009 (ALS) 318-243-3150 EMPF Jason Olson (ALS) 760-445-4477 Medic Team 2 (Fireline ALS UTV) 479-225-0836
Div J	EMS Responders & Capability:	Ambulance: LA 021 (ALS) 504-390-8040 Medic Team 1 (Fireline ALS UTV) 479-236-6684 Ambu 1 (Fireline, 4WD, BLS)
Div O/W	EMS Responders & Capability:	Ambulance: LA 018 (ALS) 337-692-7279
Swing	EMS Responders & Capability:	Ambulance: LA 013 (ALS) 318-548-0349 Ambulance LA 010 (ALS) 318-228-9107
ICP	EMS Responders & Capability:	Nick Arnett (BLS) 408-888-1900 Rich DOrazio (BLS) 239-249-1855

For medical emergencies use CMD Repeater or (208) 891-6743.

MEDICAL PLAN (ICS 206 WF)

Controlled Unclassified Information//Basic

Medical Incident Report

FOR A NON-EMERGENCY INCIDENT, WORK THROUGH CHAIN OF COMMAND TO REPORT AND TRANSPORT INJURED PERSONNEL AS NECESSARY.

FOR A MEDICAL EMERGENCY: IDENTIFY ON-SCENE INCIDENT COMMANDER BY NAME AND POSITION AND ANNOUNCE "MEDICAL EMERGENCY" TO INITIATE RESPONSE FROM IMT COMMUNICATIONS/DISPATCH.

Use the following items to communicate situation to communications/dispatch.

1. CONTACT COMMUNICATIONS / DISPATCH (Verify correct frequency prior to starting report)

Ex: "Communications, Div. Alpha. Stand-by for Emergency Traffic."

2. INCIDENT STATUS: Provide incident summary (including number of patients) and command structure.

Ex: "Communications, I have a Red priority patient, unconscious, struck by a falling tree. Requesting air ambulance to Forest Road 1 at (Lat./Long.) This will be the Trout Meadow Medical, IC is TFLD Jones. EMT Smith is providing medical care."

Severity of Emergency / Transport Priority	<input type="checkbox"/> RED / PRIORITY 1 Life or limb threatening injury or illness. Evacuation need is IMMEDIATE <i>Ex: Unconscious, difficulty breathing, bleeding severely, 2° – 3° burns more than 4 palm sizes, heat stroke, disoriented.</i> <input type="checkbox"/> YELLOW / PRIORITY 2 Serious Injury or illness. Evacuation may be DELAYED if necessary. <i>Ex: Significant trauma, unable to walk, 2° – 3° burns not more than 1-3 palm sizes.</i> <input type="checkbox"/> GREEN / PRIORITY 3 Minor Injury or illness. Non-Emergency transport <i>Ex: Sprains, strains, minor heat-related illness.</i>	
Nature of Injury or Illness & Mechanism of Injury		<i>Brief Summary of Injury or Illness (Ex: Unconscious, Struck by Falling Tree)</i>
Evacuation Request		<i>Air Ambulance / Short Haul/Hoist Ground Ambulance / Other</i>
Patient Location		<i>Descriptive Location & Lat. / Long. (WGS84)</i>
Incident Name		<i>Geographic Name + Medical (Ex: Trout Meadow Medical)</i>
On-Scene Incident Commander		<i>Name of on-scene IC of Incident within an Incident (Ex: TFLD Jones)</i>
Patient Care		<i>Name of Care Provider (Ex: EMT Smith)</i>

3. INITIAL PATIENT ASSESSMENT: Complete this section for each patient as applicable (start with the most severe patient)

Patient Assessment: See IRPG PAGE 106

Treatment:

4. EVACUATION PLAN:

Evacuation Location (if different): (Descriptive Location (drop point, intersection, etc.) or Lat. / Long.) Patient's ETA to Evacuation Location:

Helispot / Extraction Site Size and Hazards:

5. ADDITIONAL RESOURCES / EQUIPMENT NEEDS:

Example: Paramedic/EMT, crews, immobilization devices, AED, oxygen, trauma bag, IV/fluid(s), splints, rope rescue, wheeled litter, HAZMAT, extrication

6. COMMUNICATIONS: Identify State Air/Ground EMS Frequencies and Hospital Contacts as applicable

Function	Channel Name/Number	Receive (RX)	Tone/NAC *	Transmit (TX)	Tone/NAC *
COMMAND					
AIR-TO-GRND					
TACTICAL					

7. CONTINGENCY: Considerations: If primary options fail, what actions can be implemented in conjunction with primary evacuation method? Be thinking ahead..

8. ADDITIONAL INFORMATION: Updates/Changes, etc.

REMEMBER: Confirm ETAs of resources ordered. Act according to your level of training. Be Alert. Keep Calm. Think Clearly. Act Decisively.