



Tiger Island Fire LA-LAS-000252

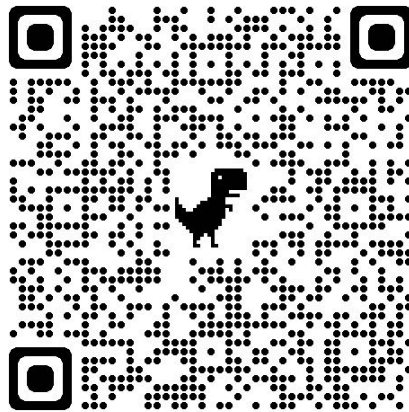
Hwy 113 Fire LA-LAS-000256

Lions Camp Road Fire LA-LAS-000281

Elizabeth Fire LA-LAS-000296

IAP

September 02, 2023 – 0700-1900 hrs



Link to IAP (all fires)

Finance/Time: 2023.tigerisland.finance@firenet.gov

Plans: 2023.tigerisland.plans@firenet.gov

Demob: 2023.tigerisland.demob@firenet.gov

PIO: 2023.tigerisland@firenet.gov - 318-239-9263

Text photos to: 912-286-3110

[Inciweb - https://inciweb.nwcg.gov/](https://inciweb.nwcg.gov/)

[Facebook@TigerIslandFire](#)

[Facebook@113andLionsCamp](#)

[Facebook@ElizabethFireLA](#)

Tiger Island Fire LA-LAS-000252



[Link to Tiger Island Maps](#)

Hwy 113 Fire LA-LAS-000256



[Link to Hwy 113 Fire Maps](#)

Lions Camp Road Fire LA-LAS-000281



[Link to Lions Camp Road Fire Maps](#)

Elizabeth Fire LA-LAS-000296



[Link to Elizabeth Fire Maps](#)

INCIDENT OBJECTIVES (ICS 202)

1. Incident Name:	2. Operational Period: DAY	
TIGER ISLAND	Date/Time From: 09/02/2023 0700 SAT	Date/Time To: 09/02/2023 1900 SAT
3. Objective(s):		
<ol style="list-style-type: none"> 1. All operations will be conducted with safety of the public and firefighters in mind. Protection of life and property is your highest priority task. When in doubt, sacrifice acres rather than firefighter and public safety. 2. Provide public information regarding fire danger to maintain good awareness of the risk and hazards to the public. Coordinate with LDAF Public Information Officer at (225) 975-7532 or presssecretary@ldaf.la.gov and State Fire Marshall's Public Affairs Director at (225) 620-5115 or ashley.rodrique@la.gov. 3. Manage the human resources assigned to fire incident in a manner that promotes mutual respect and is consistent with interagency human resource objectives. The team will handle EEO complaints in consultation with LDAF Human Resources involving personnel attached to the team. 4. Continue partnership and coordination with the appropriate LDAF, State Fire Marshall, GOHSEP, and local public safety officials. 5. Manage incident in a cost effective manner. 		
4. Operational Period Command Emphasis:		
<p>Stop, Think, Discuss then Act, and ensure LCES is in place prior to engaging the fire. The Tiger Island Fire receives a strategic, risk-based response, commensurate with the threats and opportunities, and uses the full spectrum of management actions, that consider fire and fuel conditions, weather, values at risk, and resources available.</p>		
General Situational Awareness:		
<p>Watch Out Situations: Extreme heat, dry fuels and fire behavior. Aviation use and possible long medivac times. Cumulative fatigue.</p>		
5. Site Safety Plan Required? Yes <input type="checkbox"/> No <input checked="" type="checkbox"/>		
Approved Site Safety Plan(s) Located		
6. Incident Action Plan (the items checked below are included in this Incident Action Plan):		
<input type="checkbox"/> ICS 202 <input type="checkbox"/> ICS 203 <input type="checkbox"/> ICS 204 <input type="checkbox"/> ICS 205 <input type="checkbox"/> ICS 205A <input type="checkbox"/> ICS 206	<input type="checkbox"/> ICS 207 <input type="checkbox"/> ICS 208 <input type="checkbox"/> ICS 220 <input type="checkbox"/> Map/Chart <input type="checkbox"/> Weather Forecast/Tides/Currents	Other Attachments: <input type="checkbox"/> _____ <input type="checkbox"/> _____ <input type="checkbox"/> _____ <input type="checkbox"/> _____
7. Prepared by: KELLY RUSSELL	Position/Title: PSCC	
8. Approved by Incident Commander:	Name: /s/ BART KICKLIGHTER	
ICS 202		

ORGANIZATION ASSIGNMENT LIST (ICS 203)

1. Incident Name:		2. Operational Period: DAY	
TIGER ISLAND		Date/Time From: 09/02/2023 0700 SAT	Date/Time To: 09/02/2023 1900 SAT
3. Incident Commander(s) and Command Staff:		SERVICE BRANCH	
IC/UC	STEVE PARRISH	DIRECTOR	
DEPUTY	BART KICKLIGHTER	COMMUNICATIONS UNIT	JERRY PATRICK; BARRY STEARNS
IC/UC	JAY MICKEY (T)	MEDICAL UNIT	NICK ARNETT, RICH D'ORAZIO
SAFETY OFFICER	B.LIDELL, J.CASTRO, J.ROSE (T), E.BRATCHER (T)	FOOD UNIT	DAVID MALONE
INFORMATION OFFICER	B.STRAWSER, S.HEISEY	7. Operations Section:	
LIAISON OFFICER	SUSAN MILLER BRADLEY WRIGHT (T)	DAY OPS SECTION CHIEF	SHANE STURGILL
4. Agency/Organization Representative(s):		PLANNING OPS	T.FLOYD, V.EDGE, T.HAWKINS
Agency/Organization	Name	FIELD OPS	P. MYERS, M. JAMIESON D. WALKER, J. KOLAKS (T)
LDAF	WADE DUBEA STATE FORESTER	DIVISION/GROUP	A MATT BENEDICT
LDAF	M. POLK, M. DAVIS, R. HARRIS	DIVISION/GROUP	F DAVID ZUARES, JAKE GUADIANA (T)
NATIONAL GUARD	COL SCOTT SLAVEN	DIVISION/GROUP	J M. STANAWAY, W. BAYLER, G. LUPTON
GOHSEP	TODD SMITH, AMY MICHAELS	DIVISION/GROUP	O/W LISA LONCAR
FIRE MARSHAL	R.SHOULTZ, C.ROBERSON	DIVISION/GROUP	STRUCTURE GROUP CRAIG ROBERTSON
RAPIDES PARISH	ANGIE BRANTON	DIVISION/GROUP	HWY 113 FIRE DIV B HOBAN, DEREK R
VERNON PARISH	CHIEF BOBBY HOOKS	DIVISION/GROUP	HWY 113 FIRE DIV G JOE NAMES
5. Planning Section:		DIVISION/GROUP	HWY 113 FIRE DIV K ROBERTSON, CRAIG
CHIEF	KELLY RUSSELL MARG OLSON	DIVISION/GROUP	HWY 113 FIRE DIV S/Y KEATING, BRIAN
RESOURCES UNIT	RICH AUBUCHON BRIAN DAVIS	DIVISION/GROUP	ELIZABETH FIRE HAVIRD, JOSHUA CALEB (T)
SITUATION UNIT	ERIC SCHMECKPEPPER MICHAEL DOUCET (T)	DIVISION/GROUP	LIONS CAMP ROAD FIRE UNSTAFFED
DEMOBILIZATION UNIT	DONNA THOMAS (V)	7b. Air Operations Branch:	
FIRE BEHAVIOR ANALYST	ALISON COONS, GREG TITUS	AIR OPS BRANCH DIRECTOR	DARLENE HALL
TRAINING SPECIALIST	GREGORY S SEAMON	AIR SUPPORT SUPERVISOR	CLINT DAVIS (T)
GIS SPECIALIST	T.BARNES, A.POOLE (T) M. HAUNSPERGER, M. DISKIN (V)	HELICOPTER MANAGER	DANIEL PATTERSON
TECHNOLOGY SUPPORT SPECIALIST	JOE ASHBY TONY FARMER	8. Finance/Administration Section:	
INCIDENT METEOROLOGIST	JEREMY MICHAEL	CHIEF	SANDRA MORRIS KRISTIE BOWEN (T)
AIR SPECIALIST	LINDA CHAPPELL STEVE PAES (T)	DEPUTY	JAMES MEREDITH
6. Logistics Section:		TIME UNIT	CATHERINE FARLEY
CHIEF	CHRIS REVELS		
DEPUTY	SALLY BROWNING		
DIRECTOR	JOE WALKER		
SUPPLY UNIT	NINA DONLEY-RIVERS		
FACILITIES UNIT	SUSANNE ADAMS		
GROUND SUPPORT UNIT	ROBERT JOHNSON		
9. Prepared By:	Name: KELLY RUSSELL	Position/Title: PSCC	Signature:
ICS 203	IAP Page	Date/Time: 09/01/2023 2000	



To: All Incident Personnel

As Incident Commander, I am committed to a policy of “zero tolerance” of inappropriate behavior during incident operations. Any form of harassment, discriminatory practices, or disrespectful behavior will not be tolerated. Known or reported acts will be dealt with appropriately.

I am particularly concerned about the perception that alcohol has a place in any of the Incident facilities. It is not appropriate to indulge in alcoholic beverages during any fire assignment.

The Southern Area Red Team has a policy of “NO ALCOHOL” from the time of dispatch until the time of physical release from the Incident. Members of the Team voluntarily comply with this policy; all incident personnel will be expected to do so also.

We endorse, support, and expect an attitude of mutual respect for all Incident personnel and the public we serve. We also, endorse the attitude and work ethic that places “Safety First, every time on every Incident.” We expect nothing less.

/s/Steve Parrish

Incident Commander

SA Red Team



Fire Weather Forecast

FORECAST NO: 06
PREDICTION FOR: Saturday and Sat Night
DATE: September 2nd, 2023
FORECAST ISSUED: 1800 September 1st, 2023

Fires: Tiger Island - Highway 113
Lions Camp Road - Elizabeth
Incident Meteorologist: *Jeremy Michael*
Signed: JRM (304-886-2331)

WEATHER DISCUSSION: Significant RH pushed into the region last night resulting in 85-100% recoveries across all fires. With this increase in moisture, scattered to numerous showers and storms are expected by late morning and early afternoon. Gusty and erratic winds with lightning and heavy rain are the main risks associated with these storms. If any of the fires take a direct hit, heavy rain could create muddy roads within and around the fire locations. While RHs may briefly dip into the 27-32% range early afternoon, they will quickly recover through the day with heat indices around 105 degrees. For the overnight, isolated showers and storms will be possible with lightning and brief heavy rain.

TODAY:

WEATHER: Partly cloudy becoming mostly cloudy with scattered showers and thunderstorms.
MAX TEMP: 98-101° **HEAT INDEX:** 100-105° **MIN RH:** 27-32%
PROBABILITY OF PRECIP: 45% **CHC WTG RAIN:** 22% **LAL:** 3
WINDS (20 feet): ENE 4-9 mph with gusts up to 18 mph. Gusty and erratic outflows winds from variable directions from any storms. Sea breeze may push through with gusty winds early in the evening.
MIXING HEIGHT: Weak morning inversion. 6,000-7,000 ft during the afternoon.
TRANSPORT WIND: NE/E 5-10 mph.

TONIGHT:

WEATHER: Scattered showers/storms evening; isolated showers/storms overnight.
MIN TEMP: 72-75° **MAX RH:** 90-100%
PROBABILITY OF PRECIP: 30% **CHC WTG RAIN:** 20% **LAL:** 2
WINDS (20 feet): S/SE 3-8 mph. Sea breeze possible with gusty winds 15-25 mph during the early evening.
TRANSPORT WIND: S/SE 5-10 mph.

SUNDAY:

WEATHER: Partly cloudy becoming mostly cloudy with scattered to numerous showers and thunderstorms.
MAX TEMP: 94-97° **HEAT INDEX:** 101-106° **MIN RH:** 40-45%
PROBABILITY OF PRECIP: 60% **CHC WTG RAIN:** 45% **LAL:** 3
WINDS (20 feet): SE 4-8 mph with gusts up to 18 mph. Gusty and erratic outflows winds from variable directions from any storms. Sea breeze may push through with gusty winds early in the evening.
MIXING HEIGHT: Weak morning inversion. 6,500-7,500 ft during the afternoon.
TRANSPORT WIND: S 5-10 mph.

EXTENDED OUTLOOK: MONDAY- WEDNESDAY: A weak weather system will continue to influence the regional weather into early next week as onshore southerly flow will strengthen and increase RH. This will lead to scattered to numerous showers/storms mainly in the afternoon and excellent RH recoveries near 100% each morning. In addition, probabilities are increasing for wetting rains (0.25") across the fire area each 24 hr period. Gusty and erratic outflow winds, lightning, and muddy roads from any heavy rain are the main risks.

FIRE BEHAVIOR FORECAST

FORECAST NUMBER: 09	TYPE OF FIRE: Wildland, Type 1
FIRE NAMES: Tiger Island/Lions Camp Road/Hwy 113/Elizabeth	OPERATIONAL PERIOD: Day Shift
DATE ISSUED: Friday, September 1, 2023 Time Issued: 1800	SHIFT DATE: Saturday, September 2, 2023
UNIT: Private Lands	SIGNED: Alison Coons, FBAN

WEATHER SUMMARY:

Local Thresholds – Watch Outs Temp >80°, Min RH < 35%, Winds > 20 mph	Forecast for Today: Temp: 100°, Min RH: 40%, Winds: 4-8mph Gust to 18
---	---

FIRE BEHAVIOR:

Fuels are critically dry. **KBDI and ERC values are at record levels.** Fuel conditions combined with gusty winds, especially during the afternoon, have the potential to produce extreme fire behavior. Be alert for thunderstorms in the fire area during the afternoon that could cause strong erratic winds. Isolated heat points displayed on IR maps could transition into active flame as drying continues.

Live fuel moisture samples collected at the north end of Div O and Div A ranged from 49 to 65 percent moisture, MEANING they are well into the transition of live fuels contributing to fire intensity and spread as if they were dead fuels.

Fire Behavior based on values for the fuel models shown.

Vegetation	Fuel Model	Max Rate of Spread	Flame Length
Grass/Shrub	GS3	13-53 chains/hour	5-10 feet
Southern Rough	7	11-42 chains/hour	4-7 feet
Timber Litter and Understory	TU2 / TL6	2-16 chains/hour	2-4 feet

During peak heating expect **Spotting** distances up to **0.2 miles** from wind driven ground fire and slightly less from torching trees. Wind speed of 5 mph may only carry embers 300ish feet while 15 mph could transport over 1,000 feet.
Probability of Ignition Day = **52%**

A new spot fire or ignition in the afternoon could reach **0.25 acres** in 15 minutes in sheltered timber and **2 acres** where grass/shrub and southern rough fuels are continuous.

Specific Areas of Concern:

All Fires: Live fuels are dry enough to act as dead fuels and support fire spread in the same way. Isolated heat showing near lines could develop into open flames and spread quickly. As needles and leaves continue to fall areas that have been quiet for several days could experience reburn of ground and ladder fuels that could support torching and spotting.

Tiger Island: Northern portions of the fire have the most potential for unburned fuels to ignite and carry. All Divisions should be prepared for reburn in needle cast and areas where a mosaic of burn severity occurred during initial days of the fire.

Hwy 113: Southern portions of the fire have the most potential for unburned fuels to ignite and carry. All Divisions should be prepared for reburn in needle cast and areas where a mosaic of burn severity occurred during initial days of the fire.

Lions Camp Road: Remaining heat may be difficult to locate. Remain vigilant.

Elizabeth: Once retardant dries, spread potential continues. Focus on the fire perimeter where retardant may be masking hot areas.

Air Operations:

Generally good conditions for air operations, gusting winds may cause some issues.

Fire Behavior Safety Message

Risks to fireline personnel increase significantly during transfer of command periods regardless of the size or complexity of the incident. There is a high potential for incidents or injuries. Mitigate the risks by proper implementation of LCES—Lookout, Communications, Escape Routes, and Safety Zones.

Use the QR Code below to access the
2021 LA Kiscachie NF
FDRA1 Pocket Card



Fuels and Fire Behavior Advisory

Central and East Texas, Southern Oklahoma, Far Southern Arkansas, Louisiana, Central and Southern Mississippi, Central and Southern Alabama and the Far Western Florida Panhandle
Date Advisory Effective – August 31, 2023

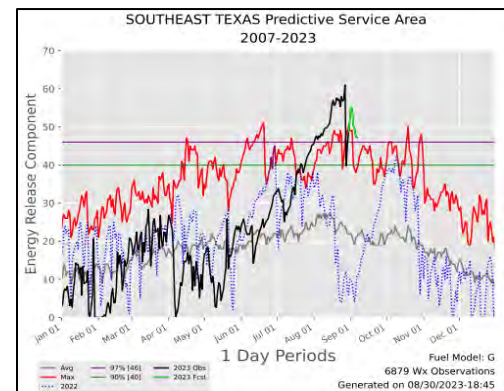
Subject: Persistent, record-breaking heat and well below normal rainfall have led to flash drought development across the Southern Area this summer. This rapid drought onset and underlying dryness have unlocked the availability of large dead fuels and live canopy fuels for combustion over an expanding portion of the geographic area. These fuels are contributing to fire behavior that increases the resistance to control for wildfires burning in high-risk pine timber and oak/juniper fuel beds across the advisory area.

Discussion: A persistent upper-level high pressure ridge produced the hottest June-to-August period on [record](#) from parts of Texas eastwards along the Gulf Coast, while hot and dry conditions have recently led to a rapid increase in abnormal dryness for adjacent areas farther to the north and east. Relentless 100-degree temperatures have contributed to an increase in fuel availability, which is resulting in very high fire intensities. Recent scattered rainfall may temporarily ease fuel dryness locally, but the return of abnormally hot and dry conditions is expected to accelerate moisture loss heading into September. Widespread, drought-busting rainfall is not currently anticipated through at least mid-September.

Difference from normal conditions: The footprint of Energy Release Component (ERC) values above the 90th percentile is forecast to expand as hot and dry conditions return to the advisory area. ERC-G in the [TAMFS](#) Southeast Texas PSA is trending above the 97th percentile and continues to track above the 16-year historical maximum. A drier, post-frontal air mass and the return of very hot temperatures is forecast to dry out fuels and increase ERC values in the areas of concern during much of the first half of September. Fire weather thresholds required to produce crown fire in high-risk timber and brush fuels are much lower with the fuel dryness indicated by 90th-percentile-or-greater ERCs. 100-degree temperatures, winds near 15 mph, and relative humidity (RH) near 25% in oak/juniper fuels near and west of I-35 and at or below 35% in pine-dominant or coastal fuels east of I-35 have been fire weather triggers. Established large fires in high risk fuels, such as Tiger Island in Louisiana, have burned intensely through the night despite RH recovery above 80%.

Concerns to Firefighters and the Public:

- Extreme fire line intensity is to be expected during both initial attack and extended attack.
- Typical barriers to fire spread, like roadways, rivers, and hardwood river bottoms cannot be relied upon to stop fire progression.
- Active fire behavior may extend into the overnight hours during periods of poor RH recovery.
- Spotting up to ¼ of a mile away has routinely been reported on the majority of recent fires, including small initial attack fires.
- Reburn of scorched needle cast in pine is now common during the days or weeks after suppression of small initial attack fires.
- Roots burning underground may result in green trees falling.
- Critical fire weather may be associated with but is not limited to: compressional warming in unstable pre-frontal environments, dry cold fronts, subsidence adjacent to tropical cyclones, sea breeze fronts and erratic winds associated with outflow from nearby thunderstorms.



Mitigation Measures:

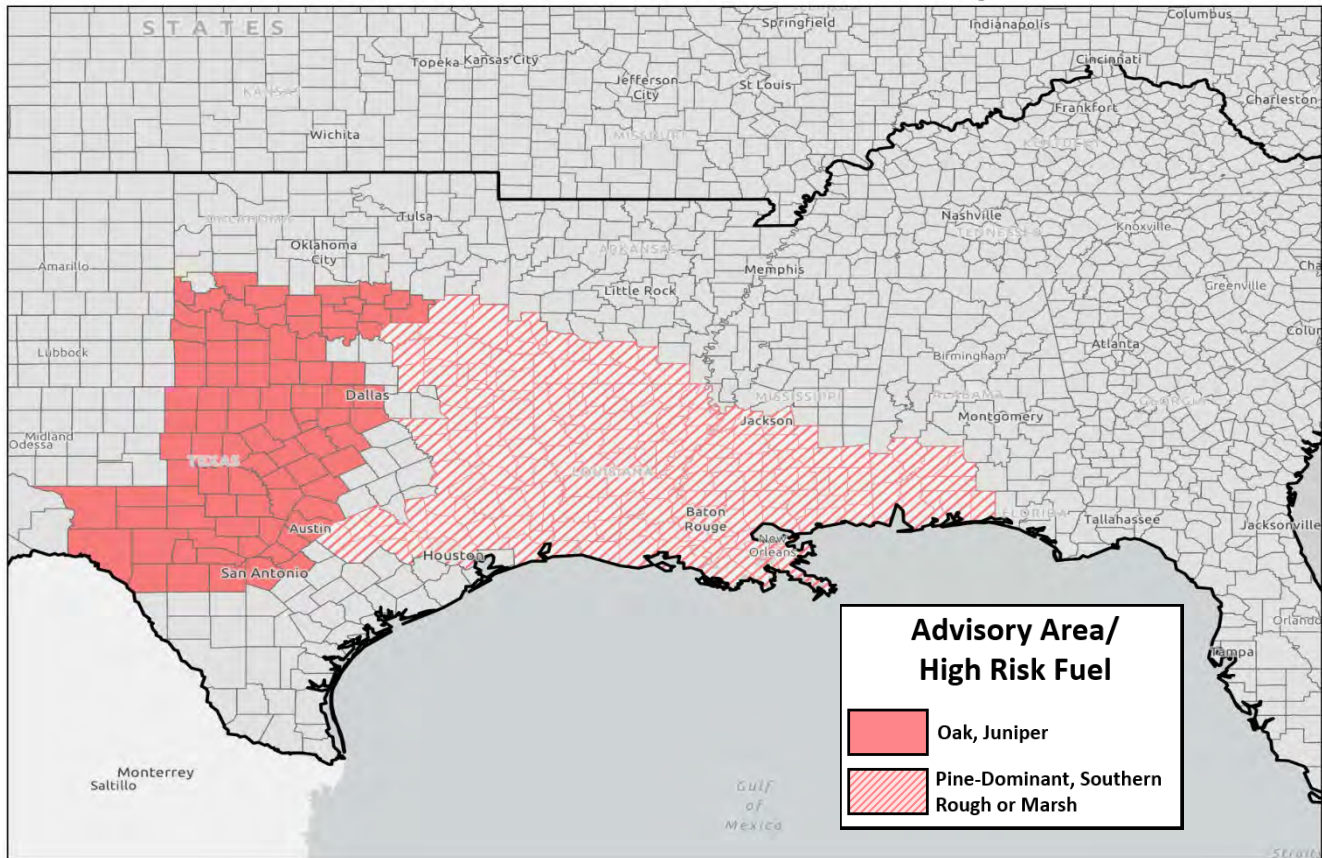
- Fire managers should be prepared to support periods of more frequent fire occurrence as well as complex, long-duration incidents.
- Firefighters should anticipate constructing wider than normal control lines, with dozers and graders (maintainers) working in tandem with engine support.
- Recent observations indicate large-diameter surface fuels and ground fuels are burning more readily and holding heat longer due to low 1000-hr fuel moisture and underlying drought. The time and effort needed for mop up will continue to increase as these fuels hold heat, especially with the forecast of continued very hot and mostly dry conditions.

Issued By: Southern Area Predictive Services in coordination with state and federal partners.

Fuels and Fire Behavior Advisory

Central and East Texas, Southern Oklahoma, Far Southern Arkansas, Louisiana, Central and Southern Mississippi, Central and Southern Alabama and the Far Western Florida Panhandle
Date Advisory Effective – August 31, 2023

Fuels and Fire Behavior Advisory



High risk oak/juniper and drought-cured grass loading on the Hill Top Fire south of Abilene, Texas (left). Torching in high risk pines adjacent to the roadside in Louisiana (right). Cured grasses near roads are a common carrier of fire into high risk fuels.



HEALTH AND SAFETY MESSAGE

*“We don’t plan on luck to be safe, we plan on good risk management and decisions”
-the Red Team*

INCIDENTS: Tiger Island, Hwy 113, Lions Camp Road | DATE: 09/02/2023 | Operational Period: Day

Major Hazards and Risks:

- 1. Traffic and Driving
- 2. Fire Weakened Trees
- 3. Heat/Dehydration
- 4. Heavy Equipment Ops

Driving Safety

- To be a safe driver you must WANT to be one. Take a good hard look at your driving habits. Are you training yourself to do the right things the right way, like fastening your seat belt, checking your mirrors, and maintaining safe following distances?
- Inattentiveness is a major contributing factor in motor vehicles accidents within the wildland firefighting community. Since the average adult attention span is 15-20 minutes, we must develop techniques that allow us to refocus our attention on our driving
- Many things can lure our attention away from our driving such as fatigue, eating and drinking, reading directions and maps, cell phone and radio use, conversation within the vehicle and music.
- Drive only when you are well rested and alert and avoid driving during the hours of 10:00 PM and 6:00 AM. Take a 10-to-15-minute break after every 2 hours.
- Practice situation awareness: be aware of what is happening in front, behind, and on both sides of your vehicle.
- Never drive when taking medications that make you drowsy.
- Delegate navigation and communication to a passenger or pull over.
- Be constantly moving your vision, checking mirrors and distant road conditions, you can avoid highway hypnosis and daydreaming.
- Avoid eating or drinking while driving.
- When talking with passengers keep your eyes on the road and both hands on the steering wheel. Avoid serious or argumentative conversations.
- Do not be in a hurry, be patient.
- **If travelling to a new fire, ensure that you know who you’re working for, what your objectives are, and that you have received a thorough briefing.**



Know your objectives and what it should look like when they are completed...understand your leader’s intent.

Risk Assessment



Division/Group Assignment List (ICS 204 WF)

Controlled Unclassified Information//Basic

1. Incident Name:			3.				
TIGER ISLAND			Branch:		Division/Group		
2. Operational Period: DAY							
Date/Time From: 09/02/2023 0700 SAT		Date/Time To: 09/02/2023 1900 SAT		A			
4. Operations Personnel							
OPERATIONS CHIEF		PETER MYERS		DIVISION/GROUP SUPERVISOR		MATT BENEDICT	
AIR ATTACK SUPERVISOR							
5. Resources Assigned this Period							
Strike Team / Task Force / Resource Designator		LWD	Leader		Number Persons	Drop Off PT./Time	Pick Up PT./Time
E-69 ENG6 PLATTE CANYON FPD		09/14	BRANDON TROSCH, GARRICK FREW (T)		3	DP60/0700	DP60/1900
E-5007 ENG6 NC-NCS		09/13	JOHN LAND		2	DP60/0700	DP60/1900
E-5008 ENG6 NC-NCS		09/13	ZACH JONES		2	DP60/0700	DP60/1900
E-46 WTS1 DYNAMITE WATER		09/13	RANDY KOING		1	DP60/0700	DP60/1900
O-3.73 SOFC (T)		09/09	JASON ROSE		1		
6. Control Operations/Work Assignments:							
TASK: Continue mop up operations along all perimeter lines.							
PURPOSE: Keep fire north of Hwy 100W and existing control lines. Complete mop up 100 feet in.							
END STATE: Residences and structures are protected. Fire remains within the current foot print.							
7. Special Instructions:							
IWI IC							
<ul style="list-style-type: none"> Take charge of scene Contact Medic: BK radio TAC 1 or State Radio Interop 5. Contact Div Sup & Tiger Island Communications as IWI IC Follow Incident Medical Report For back-up IWI communications with Tiger Island Communications call 208-891-6743 National Guard Air to Ground on Interop 3. 							
8. Division/Group Communication Summary							
Function	Channel	RX Frequency N/W	RX Tone/NAC	TX Frequency N/W	TX Tone/NAC	Mode	
TACTICAL	1	168.0500N	110.9	168.0500N	110.9	A	
COMMAND	10	170.9750N	110.9	168.7000N	110.9	A	
AIR TO GROUND	13	168.4000N		168.4000N		A	
AIR TO GROUND	14	166.6125N		166.6125N		A	
9. Prepared By (Resource Unit Leader)			Approved By (Planning Section Chief)		Date	Time	
RICH AUBUCHON			KELLY RUSSELL		09/01/2023	2200	

Division/Group Assignment List (ICS 204 WF)
Controlled Unclassified Information//Basic

1. Incident Name:				3.		
TIGER ISLAND				Branch:	Division/Group J	
2. Operational Period: DAY						
Date/Time From: 09/02/2023 0700 SAT		Date/Time To: 09/02/2023 1900 SAT				
4. Operations Personnel						
OPERATIONS CHIEF		PETER MYERS		DIVISION/GROUP SUPERVISOR		MIKE STANAWAY WAYNE BAYLE (T)
AIR ATTACK SUPERVISOR						
5. Resources Assigned this Period						
Strike Team / Task Force / Resource Designator		LWD	Leader	Number Persons	Drop Off PT./Time	Pick Up PT./Time
E-12 ENG6 MTHLF E6121 HELENA RD		09/12	MATT SAGAN	6	DP40/0700	DP40 /1900
E-29 ENG6 KYS		09/10	SUSAN NIGHTINGALE	2	DP40/0700	DP40 /1900
E-30 ENG6 KYS		09/10	JASON HUNT	3	DP40/0700	DP40 /1900
E-31 ENG6 KYS		09/10	TEENA DUNN	3	DP40/0700	DP40 /1900
E-32 ENG6 KYS		09/10	ED STEPHENS	2	DP40/0700	DP40 /1900
E-48 WTS1 MONTROSE HELL FIGHTERS		09/12	JEREMIAH GRIFFITH	1	DP40/0700	DP40 /1900
E-5.1 STEQ GA-GAS		09/10	MARK PEEPLES	5	DP40/0700	DP40 /1900
E-5.3 TRPS GA-GAS		09/10	DOUGLAS SPIETH	1	DP40/0700	DP40 /1900
E-5.7 TRP3 GA-GASMOORE, ROBERT E		09/10	ROBERT MOORE	1	DP40/0700	DP40 /1900
E-5.10 TRP3 GA-GAS		09/10	CALEB MCGAHEE	1	DP40/0700	DP40 /1900
O-65 SOF2 TX-TXF		09/05	STEVEN DAVIS,	1	DP40/0700	DP40 /1900
AMBULANCE LA 021			CAROLYN CHISHOLM	2	DP40/0700	DP40 /1900
E-42 AMBU 1			MORGAN HOOVER	2	DP40/0700	DP40 /1900
E-44 MEDIC TEAM 1		09/12	ANDREW WEST	2	DP40/0700	DP40 /1900
6. Control Operations/Work Assignments:						
TASK: Mop up along direct dozer lines 100 foot. I Monitor hardwood bottom along north end of division.						
8. Division/Group Communication Summary						
Function	Channel	RX Frequency N/W	RX Tone/NAC	TX Frequency N/W	TX Tone/NAC	Mode
TACTICAL	3	168.6000N	110.9	168.6000N	110.9	A
COMMAND	10	170.9750N	110.9	168.7000N	110.9	A
AIR TO GROUND	13	168.4000N		168.4000N		A
AIR TO GROUND	14	166.6125N		166.6125N		A
9. Prepared By (Resource Unit Leader)			Approved By (Planning Section Chief)		Date	Time
RICH AUBUCHON			KELLY RUSSELL		09/01/2023	2200

Division/Group Assignment List (ICS 204 WF)

Controlled Unclassified Information//Basic

1. Incident Name:			3.			
TIGER ISLAND			Branch:	Division/Group		
2. Operational Period: DAY						
Date/Time From: 09/02/2023 0700 SAT		Date/Time To: 09/02/2023 1900 SAT		J		
4. Operations Personnel						
OPERATIONS CHIEF		PETER MYERS		DIVISION/GROUP SUPERVISOR		MIKE STANAWAY WAYNE BAYLE (T)
AIR ATTACK SUPERVISOR						
6. Control Operations/Work Assignments:						
PURPOSE: Structures are protected to withstand advancing fire and progression to north and east is halted.						
END STATE: Structures protected and fire remains within the current footprint.						
7. Special Instructions:						
WI IC						
<ul style="list-style-type: none"> Take charge of scene Contact Medic., BK radio TAC 3 or State Radio Interop 5. Contact Div Sup & Tiger Island Communications as IWI IC Follow Incident Medical Report For back-up IWI communications with Tiger Island Communications call 208-891-6743 National Guard Air to Ground on Interop 3. 						
8. Division/Group Communication Summary						
Function	Channel	RX Frequency N/W	RX Tone/NAC	TX Frequency N/W	TX Tone/NAC	Mode
TACTICAL	3	168.6000N	110.9	168.6000N	110.9	A
COMMAND	10	170.9750N	110.9	168.7000N	110.9	A
AIR TO GROUND	13	168.4000N		168.4000N		A
AIR TO GROUND	14	166.6125N		166.6125N		A
9. Prepared By (Resource Unit Leader)			Approved By (Planning Section Chief)		Date	Time
RICH AUBUCHON			KELLY RUSSELL		09/01/2023	2200

Division/Group Assignment List (ICS 204 WF)
Controlled Unclassified Information//Basic

1. Incident Name:				3.		
TIGER ISLAND				Branch:	Division/Group F	
2. Operational Period: DAY						
Date/Time From: 09/02/2023 0700 SAT		Date/Time To: 09/02/2023 1900 SAT				
4. Operations Personnel						
OPERATIONS CHIEF		PETER MYERS		DIVISION/GROUP SUPERVISOR		DAVID ZUARES, JAKE GUADIANA (T)
AIR ATTACK SUPERVISOR						
5. Resources Assigned this Period						
Strike Team / Task Force / Resource Designator		LWD	Leader	Number Persons	Drop Off PT./Time	Pick Up PT./Time
E-6.1 STEN GA-GAS		09/09	MATT RYMER,	1	DP20/0700	DP20/1900
E-6.2 STEN GA-GAS		09/09	AUSTIN ROLAND (T)	1	DP20/0700	DP20/1900
E=6.5 ENGB (T) GA-GAS		09/09	SPIKES, SHAWN G	2	DP20/0700	DP20/1900
E-6.8 ENGB GA-GAS FINCHER, JOSEPH		09/09	JOSEPH FINCHER	1	DP20/0700	DP20/1900
E-6.12 ENGB (T) GA-GAS		09/09	DAVID HODGES,	2	DP20/0700	DP20/1900
E6.15 ENGB (T) GA-GAS		09/09	JAMES FLOOD	2	DP20/0700	DP20/1900
E-6.18 ENGB (T) GA-GAS		09/09	JOSHUA BAKER	2	DP20/0700	DP20/1900
E-11 ENG6 - VAIL FIRE		09/11	KELLY KLEIN	3	DP20/0700	DP20/1900
O-5001 STEN A-ALS		09/13	SHANE WOODHAM	1	DP20/0700	DP20/1900
E-5004 ENG6 NC-NCS		09/13	ANDY CRANFILL	2	DP20/0700	DP20/1900
E-5005 ENG6 NC-NCS		09/13	BENJAMIN KEENER	2	DP20/0700	DP20/1900
E-5006 ENG6 NC-NCS		09/13	DAVID HUFFMAN	2	DP20/0700	DP20/1900
E-50 WTS1 CO-CDFS		09/12	KYLE SIMPSON	1	DP20/0700	DP20/1900
E-23.1 STEQ SC-SCS		09/10	CHETT FOYLE	5	DP20/0700	DP20/1900
E-23.2 STEQ (T) SC-SCS			JOSHUA THOMPSON	1	DP20/0700	DP20/1900
E-23.3 TRP3 SC-SCS		09/12	GEORGE MARTIN	1	DP20/0700	DP20/1900
8. Division/Group Communication Summary						
Function	Channel	RX Frequency N/W	RX Tone/NAC	TX Frequency N/W	TX Tone/NAC	Mode
TACTICAL	2	168.2000N	110.9	168.2000N	110.9	A
COMMAND	10	170.9750N	110.9	168.7000N	110.9	A
AIR TO GROUND	13	168.4000N		168.4000N		A
AIR TO GROUND	14	166.6125N		166.6125N		A
9. Prepared By (Resource Unit Leader)			Approved By (Planning Section Chief)		Date	Time
RICH AUBUCHON			KELLY RUSSELL		09/01/2023	2200

Division/Group Assignment List (ICS 204 WF)
Controlled Unclassified Information//Basic

1. Incident Name:			3.			
TIGER ISLAND			Branch:		Division/Group	
2. Operational Period: DAY					F	
Date/Time From: 09/02/2023 0700 SAT		Date/Time To: 09/02/2023 1900 SAT				
4. Operations Personnel						
OPERATIONS CHIEF		PETER MYERS		DIVISION/GROUP SUPERVISOR		DAVID ZUARES, JAKE GUADIANA (T)
AIR ATTACK SUPERVISOR						
5. Resources Assigned this Period						
Strike Team / Task Force / Resource Designator		LWD	Leader	Number Persons	Drop Off PT./Time	Pick Up PT./Time
E-23.5 TRP3 SC-SCS		09/12	LEMONT WILLIAMS	1	DP20/0700	DP20/1900
E 23.11 TRP3 SC-SCS			BENJAMIN JORDAN	1	DP20/0700	DP20/1900
E-25.5 STEQ SC-SCS		09/10	CLAYTON HOWARD	1	DP20/0700	DP20/1900
E-25.6 TRP3 SC-SCS		09/10	BRIAN PARNELL	1	DP20/0700	DP20/1900
E-25.7 TRP3 SC-SCS		09/10	JOSEPH LEMON	1	DP20/0700	DP20/1900
E-25.8 TRP3 SC-SCS		09/10	JAMES ZELANAK	1	DP20/0700	DP20/1900
E-25.9 TRP3 SC-SCS		09/10	WILLIAM YONCE	1	DP20/0700	DP20/1900
O-65 SOF2		09/05	STEVEN DAVIS	1	DP20/0700	DP20/1900
O-84 EMPF		09/11	JASON OLSON	1	DP20/0700	DP20/1900
AMBU LA 009			KAY CALDWELL	1	DP20/0700	DP20/1900
E-45 MEDIC TEAM		09/12	CODY ANDREWS	2	DP20/0700	DP20/1900
6. Control Operations/Work Assignments:						
<p>TASK: Reinforce dozer lines as direct as possible where needed to complete containment and make traversable by type 6 engine. Burn out when necessary as opportunity and resources present themselves with ops approval. Mop up perimeter edge 100 foot.</p> <p>PURPOSE: Keep fire north of Frazier Rd., east of the Hwy 190 corridor and south of Whiddon Rd and Shinn Rd.</p> <p>END STATE: Protection of Merryville, residences, structures and to provide the ability of residences a return to</p>						
8. Division/Group Communication Summary						
Function	Channel	RX Frequency N/W	RX Tone/NAC	TX Frequency N/W	TX Tone/NAC	Mode
TACTICAL	2	168.2000N	110.9	168.2000N	110.9	A
COMMAND	10	170.9750N	110.9	168.7000N	110.9	A
AIR TO GROUND	13	168.4000N		168.4000N		A
AIR TO GROUND	14	166.6125N		166.6125N		A
9. Prepared By (Resource Unit Leader)			Approved By (Planning Section Chief)		Date	Time
RICH AUBUCHON			KELLY RUSSELL		09/01/2023	2200

Division/Group Assignment List (ICS 204 WF)

Controlled Unclassified Information//Basic

1. Incident Name:			3.			
TIGER ISLAND			Branch:	Division/Group		
2. Operational Period: DAY						
Date/Time From: 09/02/2023 0700 SAT		Date/Time To: 09/02/2023 1900 SAT		F		
4. Operations Personnel						
OPERATIONS CHIEF		PETER MYERS		DIVISION/GROUP SUPERVISOR		DAVID ZUARES, JAKE GUADIANA (T)
AIR ATTACK SUPERVISOR						
6. Control Operations/Work Assignments:						
their homes.						
7. Special Instructions:						
WI IC						
<ul style="list-style-type: none"> Take charge of scene Contact Medic: BK radio TAC2 or State Radio Interop 5. Contact Div Sup & Tiger Island Communications as IWI IC Follow Incident Medical Report For back-up IWI communications with Tiger Island Communications call 208-891-6743 National Guard Air to Ground on Interop 3. 						
8. Division/Group Communication Summary						
Function	Channel	RX Frequency N/W	RX Tone/NAC	TX Frequency N/W	TX Tone/NAC	Mode
TACTICAL	2	168.2000N	110.9	168.2000N	110.9	A
COMMAND	10	170.9750N	110.9	168.7000N	110.9	A
AIR TO GROUND	13	168.4000N		168.4000N		A
AIR TO GROUND	14	166.6125N		166.6125N		A
9. Prepared By (Resource Unit Leader)			Approved By (Planning Section Chief)		Date	Time
RICH AUBUCHON			KELLY RUSSELL		09/01/2023	2200

Division/Group Assignment List (ICS 204 WF)
Controlled Unclassified Information//Basic

1. Incident Name:			3.			
TIGER ISLAND			Branch:		Division/Group	
2. Operational Period: DAY					O/W	
Date/Time From: 09/02/2023 0700 SAT		Date/Time To: 09/02/2023 1900 SAT				
4. Operations Personnel						
OPERATIONS CHIEF		PETER MYERS		DIVISION/GROUP SUPERVISOR		LISA LONCAR, GARRISON LUPTON (T)
AIR ATTACK SUPERVISOR						
5. Resources Assigned this Period						
Strike Team / Task Force / Resource Designator		LWD	Leader	Number Persons	Drop Off PT./Time	Pick Up PT./Time
C-1 HC1 CRW1 SMOKEY BEAR		09/05	RUE, JESUS	23	DP60/0700	DP60/1900
E-13 ENG6 - SGS NORTH WEST		09/14	SCOTT SHERLOCK	2	DP60/0700	DP60/1900
E14 ENG6 BLACK MESA		09/11	GORDON EMERSON	4	DP60/0700	DP60/1900
E-70 ENG6 WYCO ENGINE 1		09/14	RANDY PAFFORD	3	DP60/0700	DP60/1900
E-47 WTS1 310 DUST CONTROL		09/13	JERRY BECKER	1	DP60/0700	DP60/1900
O-3.73 SOFC (T)		09/09	JASON ROSE,	1		
AMBULANCE LA 018		09/13	PARRISH WALLACE	1	DP60/0700	DP60/1900
6. Control Operations/Work Assignments:						
TASK: Mop up 100 feet interior from perimete line.						
PURPOSE: Structures are protected to withstand advancing fire and progression to north and east is halted.						
END STATE: Structures protected and fire remains within the current footprint.						
7. Special Instructions:						
WI IC						
<ul style="list-style-type: none"> • Take charge of scene • Contact Medic, BK radio TAC 4 or State Radio Interop 5. • Contact Div Sup & Tiger Island Communications as IWI IC • Follow Incident Medical Report 						
8. Division/Group Communication Summary						
Function	Channel	RX Frequency N/W	RX Tone/NAC	TX Frequency N/W	TX Tone/NAC	Mode
TACTICAL	4	166.7250N	110.9	166.7250N	110.9	A
COMMAND	10	170.9750N	110.9	168.7000N	110.9	A
AIR TO GROUND	13	168.4000N		168.4000N		A
AIR TO GROUND	14	166.6125N		166.6125N		A
9. Prepared By (Resource Unit Leader)			Approved By (Planning Section Chief)		Date	Time
RICH AUBUCHON			KELLY RUSSELL		09/01/2023	2200

Division/Group Assignment List (ICS 204 WF)

Controlled Unclassified Information//Basic

1. Incident Name:		3.	
TIGER ISLAND		Branch:	Division/Group O/W
2. Operational Period: DAY			
Date/Time From: 09/02/2023 0700 SAT	Date/Time To: 09/02/2023 1900 SAT		
4. Operations Personnel			
OPERATIONS CHIEF	PETER MYERS	DIVISION/GROUP SUPERVISOR	LISA LONCAR, GARRISON LUPTON (T)
AIR ATTACK SUPERVISOR			

7. Special Instructions:

- For back-up IWI communications with Tiger Island Communications call 208-891-6743
- National Guard Air to Ground on Interop 3.

8. Division/Group Communication Summary						
Function	Channel	RX Frequency N/W	RX Tone/NAC	TX Frequency N/W	TX Tone/NAC	Mode
TACTICAL	4	166.7250N	110.9	166.7250N	110.9	A
COMMAND	10	170.9750N	110.9	168.7000N	110.9	A
AIR TO GROUND	13	168.4000N		168.4000N		A
AIR TO GROUND	14	166.6125N		166.6125N		A

9. Prepared By (Resource Unit Leader)	Approved By (Planning Section Chief)	Date	Time
RICH AUBUCHON	KELLY RUSSELL	09/01/2023	2200

Division/Group Assignment List (ICS 204 WF)
Controlled Unclassified Information//Basic

1. Incident Name:			3.			
TIGER ISLAND			Branch:		Division/Group	
2. Operational Period: DAY					STRUCTURE GROUP	
Date/Time From: 09/02/2023 0700 SAT		Date/Time To: 09/02/2023 1900 SAT				
4. Operations Personnel						
OPERATIONS CHIEF		PETER MYERS		DIVISION/GROUP SUPERVISOR		* CRAIG ROBERTSON
AIR ATTACK SUPERVISOR						
5. Resources Assigned this Period						
Strike Team / Task Force / Resource Designator		LWD	Leader	Number Persons	Drop Off PT./Time	Pick Up PT./Time
SOFC		09/10	JOE CASTRO	1		
6. Control Operations/Work Assignments:						
Working in coordination with local and state fire departments. Support division structure needs.						
7. Special Instructions:						
Coordinate with LA IST Resources. Support division structure needs.						
WI IC						
<ul style="list-style-type: none"> • Take charge of scene • Contact Medic: BK radio TAC 5 or State Radio Interop 5. • Contact Div Sup & Tiger Island Communications as IWI IC • Follow Incident Medical Report • For back-up IWI communications with Tiger Island Communications call 208-891-6743 • National Guard Air to Ground on Interop 3. 						
8. Division/Group Communication Summary						
Function	Channel	RX Frequency N/W	RX Tone/NAC	TX Frequency N/W	TX Tone/NAC	Mode
TACTICAL	5	166.7750N	110.9	166.7750N	110.9	A
COMMAND	10	170.9750N	110.9	168.7000N	110.9	A
AIR TO GROUND	13	168.4000N		168.4000N		A
AIR TO GROUND	14	166.6125N		166.6125N		A
9. Prepared By (Resource Unit Leader)			Approved By (Planning Section Chief)		Date	Time
RICH AUBUCHON			KELLY RUSSELL		09/01/2023	2200

Division/Group Assignment List (ICS 204 WF)
Controlled Unclassified Information//Basic

1. Incident Name:			3.			
TIGER ISLAND			Branch:		Division/Group	
2. Operational Period: DAY			HIGHWAY 113 FIRE - DIV B			
Date/Time From: 09/02/2023 0700 SAT		Date/Time To: 09/02/2023 1900 SAT				
4. Operations Personnel						
OPERATIONS CHIEF		MARK JAMIESON JEREMY KOLAKS (T)		BRANCH DIRECTOR		
DIVISION/GROUP SUPERVISOR		DEREK HOBAN		SOFC		JOE CASTRO
5. Resources Assigned this Period						
Strike Team / Task Force / Resource Designator		LWD	Leader	Number Persons	Drop Off PT./Time	Pick Up PT./Time
E05003 ENG6 NC-NCS		09/13	JONATHAN PAYNE	2	/0700	/1900
E-37.1.1 STEQ NC-NCS		09/14	JASON ODUM	1	/0700	/1900
E-37.3 TRP2 NC-NCS		09/14	JONATHAN STALLS		/0700	/1900
E-37.2 TRP2 NC-NCS		09/14	CHUCK MUNFORD	1	/0700	/1900
E-22 TRP2 KYS		09/10	DEWAYNE ANDERSON	2	/0700	/1900
6. Control Operations/Work Assignments:						
TASK: Establish control lines as needed, improve existing lines so they can be controlled by engines. Patrol for spot fires and slop-overs as needed. Mop up any threats to the containment lines.						
PURPOSE: To halt progression of the fire perimeter. Eliminate threats to homes and infrastructure surrounding the fire area.						
END STATE: All infrastructure and risk to the public has been mitigated,.						
7. Special Instructions:						
IWI IC						
<ul style="list-style-type: none"> • Take charge of scene • Contact Medic: BK radio TAC 1 or State Radio Interop 5. • Contact Div Sup & Tiger Island Communications as IWI IC • Follow Incident Medical Report • For back-up IWI communications with Tiger Island Communications call 208-891-6743 • National Guard Air to Ground on Interop 3. 						
8. Division/Group Communication Summary						
Function	Channel	RX Frequency N/W	RX Tone/NAC	TX Frequency N/W	TX Tone/NAC	Mode
COMMAND	10	170.9750N	110.9	168.7000N	110.9	A
TACTICAL	1	168.0500N	110.9	168.0500N	110.9	A
TACTICAL	2	168.2000N	110.9	168.2000N	110.9	A
TACTICAL	3	168.6000N	110.9	168.6000N	110.9	A
TACTICAL	4	166.7250N	110.9	166.7250N	110.9	A
AIR TO GROUND	13	168.4000N		168.4000N		A
AIR TO GROUND	14	166.6125N		166.6125N		A
9. Prepared By (Resource Unit Leader)			Approved By (Planning Section Chief)		Date	Time
RICH AUBUCHON			KELLY RUSSELL		09/01/2023	2200

Division/Group Assignment List (ICS 204 WF)

Controlled Unclassified Information//Basic

1. Incident Name:				3.			
TIGER ISLAND				Branch:		Division/Group	
2. Operational Period: DAY							
Date/Time From: 09/02/2023 0700 SAT		Date/Time To: 09/02/2023 1900 SAT		HIGHWAY 113 FIRE - DIV B			
4. Operations Personnel							
OPERATIONS CHIEF		MARK JAMIESON JEREMY KOLAKS (T)		BRANCH DIRECTOR			
DIVISION/GROUP SUPERVISOR		DEREK HOBAN		SOFC		JOE CASTRO	
7. Special Instructions:							
<ul style="list-style-type: none"> COMMAND CHANNEL STATE RADIO: CHANNEL 12 R6-CORDTK2 							
8. Division/Group Communication Summary							
Function	Channel	RX Frequency N/W	RX Tone/NAC	TX Frequency N/W	TX Tone/NAC	Mode	
COMMAND	10	170.9750N	110.9	168.7000N	110.9	A	
TACTICAL	1	168.0500N	110.9	168.0500N	110.9	A	
TACTICAL	2	168.2000N	110.9	168.2000N	110.9	A	
TACTICAL	3	168.6000N	110.9	168.6000N	110.9	A	
TACTICAL	4	166.7250N	110.9	166.7250N	110.9	A	
AIR TO GROUND	13	168.4000N		168.4000N		A	
AIR TO GROUND	14	166.6125N		166.6125N		A	
9. Prepared By (Resource Unit Leader)			Approved By (Planning Section Chief)			Date	Time
RICH AUBUCHON			KELLY RUSSELL			09/01/2023	2200

Division/Group Assignment List (ICS 204 WF)
Controlled Unclassified Information//Basic

1. Incident Name:			3.			
TIGER ISLAND			Branch:		Division/Group	
2. Operational Period: DAY			HIGHWAY 113 FIRE - DIV G			
Date/Time From: 09/02/2023 0700 SAT		Date/Time To: 09/02/2023 1900 SAT				
4. Operations Personnel						
OPERATIONS CHIEF		MARK JAMIESON JEREMY KOLAKS (T)		BRANCH DIRECTOR		
DIVISION/GROUP SUPERVISOR		JOE NAMES		SOFC		JOE CASTRO
5. Resources Assigned this Period						
Strike Team / Task Force / Resource Designator		LWD	Leader	Number Persons	Drop Off PT./Time	Pick Up PT./Time
E-63 ENG6 ATTACK ONE MG		09/14	WES COLEMAN	2	/0700	/1900
E-36.1.1 STEQ NC-NCS		09/14	DAVID ROOKS	1	/0700	/1900
E-36.2.1 STEQ (T) NC-NCS		09/14	MICHAEL RHODES	1	/0700	/1900
E-36.4 TRP2 NC-NCS		09/14	CHRISTOPHER WARD	2	/0700	/1900
6. Control Operations/Work Assignments:						
<p>TASK: Establish control lines as needed, improve existing lines so they can be controlled by engines. Patrol for spot fires and slop-overs as needed. Mop up any threats to the containment lines.</p> <p>PURPOSE: To halt progression of the fire perimeter. Eliminate threats to homes and infrastructure surrounding the fire area.</p> <p>END STATE: All infrastructure and risk to the public has been mitigated,.</p>						
7. Special Instructions:						
<p>IWI IC</p> <ul style="list-style-type: none"> • Take charge of scene • Contact Medic: BK radio TAC 2 or State Radio Interop 5. • Contact Div Sup & Tiger Island Communications as IWI IC • Follow Incident Medical Report • For back-up IWI communications with Tiger Island Communications call 208-891-6743 • National Guard Air to Ground on Interop 3. <p>COMMAND CHANNEL STATE RADIO: CHANNEL 12 R6-CORDTK2</p>						
8. Division/Group Communication Summary						
Function	Channel	RX Frequency N/W	RX Tone/NAC	TX Frequency N/W	TX Tone/NAC	Mode
COMMAND	10	170.9750N	110.9	168.7000N	110.9	A
TACTICAL	1	168.0500N	110.9	168.0500N	110.9	A
TACTICAL	2	168.2000N	110.9	168.2000N	110.9	A
TACTICAL	3	168.6000N	110.9	168.6000N	110.9	A
TACTICAL	4	166.7250N	110.9	166.7250N	110.9	A
AIR TO GROUND	13	168.4000N		168.4000N		A
AIR TO GROUND	14	166.6125N		166.6125N		A
9. Prepared By (Resource Unit Leader)			Approved By (Planning Section Chief)		Date	Time
RICH AUBUCHON			KELLY RUSSELL		09/01/2023	2200

Division/Group Assignment List (ICS 204 WF)
Controlled Unclassified Information//Basic

1. Incident Name:			3.			
TIGER ISLAND			Branch:		Division/Group	
2. Operational Period: DAY			HIGHWAY 113 FIRE - DIV K			
Date/Time From: 09/02/2023 0700 SAT		Date/Time To: 09/02/2023 1900 SAT				
4. Operations Personnel						
OPERATIONS CHIEF		MARK JAMIESON JEREMY KOLAKS (T)		BRANCH DIRECTOR		
DIVISION/GROUP SUPERVISOR		CRAIG ROBERTSON		SOFC		JOE CASTRO
5. Resources Assigned this Period						
Strike Team / Task Force / Resource Designator		LWD	Leader	Number Persons	Drop Off PT./Time	Pick Up PT./Time
E-3.1 STEQ GA-GAS			KEN WELLS	1	/0700	/1900
E-3.5 TRP3 GA-GAS			EVAN HYERS	1	/0700	/1900
E-3.8 TRPS3 GA-GAS			BLAIR KIRKSEY	1	/0700	/1900
6. Control Operations/Work Assignments:						
<p>TASK: Establish control lines as needed, improve existing lines so they can be controlled by engines. Patrol for spot fires and slop-overs as needed. Mop up any threats to the containment lines.</p> <p>PURPOSE: To halt progression of the fire perimeter. Eliminate threats to homes and infrastructure surrounding the fire area.</p> <p>END STATE: All infrastructure and risk to the public has been mitigated,.</p>						
7. Special Instructions:						
<p>IWI IC</p> <ul style="list-style-type: none"> • Take charge of scene • Contact Medic: BK radio TAC 3 or State Radio Interop 5. • Contact Div Sup & Tiger Island Communications as IWI IC • Follow Incident Medical Report • For back-up IWI communications with Tiger Island Communications call 208-891-6743 • National Guard Air to Ground on Interop 3. <p>COMMAND CHANNEL STATE RADIO: CHANNEL 12 R6-CORDTK2</p>						
8. Division/Group Communication Summary						
Function	Channel	RX Frequency N/W	RX Tone/NAC	TX Frequency N/W	TX Tone/NAC	Mode
TACTICAL	1	168.0500N	110.9	168.0500N	110.9	A
TACTICAL	2	168.2000N	110.9	168.2000N	110.9	A
TACTICAL	3	168.6000N	110.9	168.6000N	110.9	A
TACTICAL	4	166.7250N	110.9	166.7250N	110.9	A
AIR TO GROUND	13	168.4000N		168.4000N		A
AIR TO GROUND	14	166.6125N		166.6125N		A
COMMAND	10	170.9750N	110.9	168.7000N	110.9	A
9. Prepared By (Resource Unit Leader)			Approved By (Planning Section Chief)		Date	Time
RICH AUBUCHON			KELLY RUSSELL		09/01/2023	2200

Division/Group Assignment List (ICS 204 WF)
Controlled Unclassified Information//Basic

1. Incident Name:				3.		
TIGER ISLAND				Branch:	Division/Group	
2. Operational Period: DAY						
Date/Time From: 09/02/2023 0700 SAT		Date/Time To: 09/02/2023 1900 SAT		HIGHWAY 113 FIRE - DIV S/X		
4. Operations Personnel						
OPERATIONS CHIEF		MARK JAMIESON JEREMY KOLAKS (T)		BRANCH DIRECTOR		
DIVISION/GROUP SUPERVISOR		BRIAN KEATING		SOFC JOE CASTRO		
5. Resources Assigned this Period						
Strike Team / Task Force / Resource Designator		LWD	Leader	Number Persons	Drop Off PT./Time	Pick Up PT./Time
D-1 DUMMY					/0700	/1900
C-3 IHC LITTLE TUJUNGA		09/14		23	/0700	/1900
E-27 ENG6 SC		09/10	BEN KINDLE, BRAD PHILLIPS	2	/0700	/1900
E-28 ENG6 SC		09/10	THOMAS WILLIAMS, ROOSEVELT SEEGARS	2	/0700	/1900
E-49 WTS1 310 DUST CONTROL		09/14	ANDREW WITTE	1	/0700	/1900
E-24.5 STEQ			DREW PRESSLEY	1	/0700	/1900
E-24.1 TRP3 SC-SCS		09/10	RANDALL HILL	1	/0700	/1900
E-24.2 TRP3 SC-SCS		09/10	BUCK NEWCOMB, JAMES POLIN	2	/0700	/1900
E-24.9 TRP3 SC-SCS		09/10	RUSSELL HALE	1	/0700	/1900
6. Control Operations/Work Assignments:						
TASK: Establish control lines as needed, improve existing lines so they can be controlled by engines. Patrol for spot fires and slop-overs as needed. Mop up any threats to the containment lines.						
PURPOSE: To halt progression of the fire perimeter. Eliminate threats to homes and infrastructure surrounding the fire area.						
8. Division/Group Communication Summary						
Function	Channel	RX Frequency N/W	RX Tone/NAC	TX Frequency N/W	TX Tone/NAC	Mode
TACTICAL	1	168.0500N	110.9	168.0500N	110.9	A
TACTICAL	2	168.2000N	110.9	168.2000N	110.9	A
TACTICAL	3	168.6000N	110.9	168.6000N	110.9	A
TACTICAL	4	166.7250N	110.9	166.7250N	110.9	A
AIR TO GROUND	13	168.4000N		168.4000N		A
AIR TO GROUND	14	166.6125N		166.6125N		A
COMMAND	10	170.9750N	110.9	168.7000N	110.9	A
9. Prepared By (Resource Unit Leader)			Approved By (Planning Section Chief)		Date	Time
RICH AUBUCHON			KELLY RUSSELL		09/01/2023	2200

Division/Group Assignment List (ICS 204 WF)

Controlled Unclassified Information//Basic

1. Incident Name:				3.			
TIGER ISLAND				Branch:		Division/Group	
2. Operational Period: DAY							
Date/Time From: 09/02/2023 0700 SAT		Date/Time To: 09/02/2023 1900 SAT		HIGHWAY 113 FIRE - DIV S/X			
4. Operations Personnel							
OPERATIONS CHIEF		MARK JAMIESON JEREMY KOLAKS (T)		BRANCH DIRECTOR			
DIVISION/GROUP SUPERVISOR		BRIAN KEATING		SOFC		JOE CASTRO	
6. Control Operations/Work Assignments:							
END STATE: All infrastructure and risk to the public has been mitigated,.							
7. Special Instructions:							
IWI IC							
<ul style="list-style-type: none"> Take charge of scene Contact Medic: BK radio TAC 4 or State Radio Interop 5. Contact Div Sup & Tiger Island Communications as IWI IC Follow Incident Medical Report For back-up IWI communications with Tiger Island Communications call 208-891-6743 National Guard Air to Ground on Interop 3. 							
COMMAND CHANNEL STATE RADIO: CHANNEL 12 R6-CORDTK2							
8. Division/Group Communication Summary							
Function	Channel	RX Frequency N/W	RX Tone/NAC	TX Frequency N/W	TX Tone/NAC	Mode	
TACTICAL	1	168.0500N	110.9	168.0500N	110.9	A	
TACTICAL	2	168.2000N	110.9	168.2000N	110.9	A	
TACTICAL	3	168.6000N	110.9	168.6000N	110.9	A	
TACTICAL	4	166.7250N	110.9	166.7250N	110.9	A	
AIR TO GROUND	13	168.4000N		168.4000N		A	
AIR TO GROUND	14	166.6125N		166.6125N		A	
COMMAND	10	170.9750N	110.9	168.7000N	110.9	A	
9. Prepared By (Resource Unit Leader)			Approved By (Planning Section Chief)			Date	Time
RICH AUBUCHON			KELLY RUSSELL			09/01/2023	2200

Division/Group Assignment List (ICS 204 WF)
Controlled Unclassified Information//Basic

1. Incident Name:				3.			
TIGER ISLAND				Branch:		Division/Group	
2. Operational Period: DAY				HIGHWAY 113 FIRE - TIFMAS			
Date/Time From: 09/02/2023 0700 SAT		Date/Time To: 09/02/2023 1900 SAT					
4. Operations Personnel							
OPERATIONS CHIEF		MARK JAMIESON JEREMY KOLAKS (T)		BRANCH DIRECTOR			
DIVISION/GROUP SUPERVISOR		DEREK HOBAN		SOFC		JOE CASTRO	
5. Resources Assigned this Period							
Strike Team / Task Force / Resource Designator		LWD	Leader	Number Persons	Drop Off PT./Time	Pick Up PT./Time	
TEXAS TASK FORCE 1				23			
3 ENGINES							
1 TENDER							
1 BRUSH							
CMD							
1 ALS BOX							
1 ALS UTV							
1 MED CMD							
TEXAS TASK FORCE 2				26			
4 ENGINES							
1 TENDER							
1 CMD							
1 ALS BOX							
1 ATS							
UTV							
MED CMD							
TEXAS TASK FORCE 3				23			
8. Division/Group Communication Summary							
Function	Channel	RX Frequency N/W	RX Tone/NAC	TX Frequency N/W	TX Tone/NAC	Mode	
TACTICAL	1	168.0500N	110.9	168.0500N	110.9	A	
TACTICAL	2	168.2000N	110.9	168.2000N	110.9	A	
TACTICAL	3	168.6000N	110.9	168.6000N	110.9	A	
TACTICAL	4	166.7250N	110.9	166.7250N	110.9	A	
COMMAND	10	170.9750N	110.9	168.7000N	110.9	A	
AIR TO GROUND	13	168.4000N		168.4000N		A	
AIR TO GROUND	14	166.6125N		166.6125N		A	
9. Prepared By (Resource Unit Leader)			Approved By (Planning Section Chief)			Date	Time
RICH AUBUCHON			MARG OLSON			09/01/2023	2218

Division/Group Assignment List (ICS 204 WF)
Controlled Unclassified Information//Basic

1. Incident Name:				3.		
TIGER ISLAND				Branch:	Division/Group	
2. Operational Period: DAY						
Date/Time From: 09/02/2023 0700 SAT		Date/Time To: 09/02/2023 1900 SAT		HIGHWAY 113 FIRE - TIFMAS		
4. Operations Personnel						
OPERATIONS CHIEF		MARK JAMIESON JEREMY KOLAKS (T)		BRANCH DIRECTOR		
DIVISION/GROUP SUPERVISOR		DEREK HOBAN		SOFC JOE CASTRO		
5. Resources Assigned this Period						
Strike Team / Task Force / Resource Designator		LWD	Leader	Number Persons	Drop Off PT./Time	Pick Up PT./Time
4 ENGINES						
1 TENDER						
1 BRUSH						
1 CMD						
1 ALS BOX						
1 ALS UTV						
1 MED CMD						
6. Control Operations/Work Assignments:						
TASK: Establish control lines as needed, improve existing lines so they can be controlled by engines. Patrol for spot fires and slop-overs as needed. Mop up any threats to the containment lines.						
PURPOSE: To halt progression of the fire perimeter. Eliminate threats to homes and infrastructure surrounding the fire area.						
END STATE: All infrastructure and risk to the public has been mitigated,.						
7. Special Instructions:						
IWI IC						
<ul style="list-style-type: none"> • Take charge of scene • Contact Medic: BK radio TAC 1 or State Radio Interop 5. • Contact Div Sup & Tiger Island Communications as IWI IC • Follow Incident Medical Report • For back-up IWI communications with Tiger Island Communications call 208-891-6743 						
8. Division/Group Communication Summary						
Function	Channel	RX Frequency N/W	RX Tone/NAC	TX Frequency N/W	TX Tone/NAC	Mode
TACTICAL	1	168.0500N	110.9	168.0500N	110.9	A
TACTICAL	2	168.2000N	110.9	168.2000N	110.9	A
TACTICAL	3	168.6000N	110.9	168.6000N	110.9	A
TACTICAL	4	166.7250N	110.9	166.7250N	110.9	A
COMMAND	10	170.9750N	110.9	168.7000N	110.9	A
AIR TO GROUND	13	168.4000N		168.4000N		A
AIR TO GROUND	14	166.6125N		166.6125N		A
9. Prepared By (Resource Unit Leader)			Approved By (Planning Section Chief)		Date	Time
RICH AUBUCHON			MARG OLSON		09/01/2023	2218

Division/Group Assignment List (ICS 204 WF)
Controlled Unclassified Information//Basic

1. Incident Name:		3.	
TIGER ISLAND		Branch:	Division/Group
2. Operational Period: DAY			
Date/Time From: 09/02/2023 0700 SAT	Date/Time To: 09/02/2023 1900 SAT	HIGHWAY 113 FIRE - TIFMAS	
4. Operations Personnel			
OPERATIONS CHIEF	MARK JAMIESON JEREMY KOLAKS (T)	BRANCH DIRECTOR	
DIVISION/GROUP SUPERVISOR	DEREK HOBAN	SOFC	JOE CASTRO

7. Special Instructions:

- National Guard Air to Ground on Interop 3.
- COMMAND CHANNEL STATE RADIO: CHANNEL 12 R6-CORDTK2

8. Division/Group Communication Summary

Function	Channel	RX Frequency N/W	RX Tone/NAC	TX Frequency N/W	TX Tone/NAC	Mode
TACTICAL	1	168.0500N	110.9	168.0500N	110.9	A
TACTICAL	2	168.2000N	110.9	168.2000N	110.9	A
TACTICAL	3	168.6000N	110.9	168.6000N	110.9	A
TACTICAL	4	166.7250N	110.9	166.7250N	110.9	A
COMMAND	10	170.9750N	110.9	168.7000N	110.9	A
AIR TO GROUND	13	168.4000N		168.4000N		A
AIR TO GROUND	14	166.6125N		166.6125N		A

9. Prepared By (Resource Unit Leader)	Approved By (Planning Section Chief)	Date	Time
RICH AUBUCHON	MARG OLSON	09/01/2023	2218

Division/Group Assignment List (ICS 204 WF)
Controlled Unclassified Information//Basic

1. Incident Name:				3.		
TIGER ISLAND				Branch:	Division/Group LIONS CAMP ROAD FIRE	
2. Operational Period: DAY						
Date/Time From: 09/02/2023 0700 SAT		Date/Time To: 09/02/2023 1900 SAT				
4. Operations Personnel						
OPERATIONS CHIEF		PETER MYERS		BRANCH DIRECTOR		
DIVISION/GROUP SUPERVISOR		MATHEW BENEDICT		AIR ATTACK SUPERVISOR		
5. Resources Assigned this Period						
Strike Team / Task Force / Resource Designator		LWD	Leader	Number Persons	Drop Off PT./Time	Pick Up PT./Time
E-68 ENG6 AZ-ASK ENG612		09/15		12	/0700	/1900
O-66 SOF2		09/13	JONATHAN LEE		/0700	/1900
AMBULANCE LA 010				1	/0700	/1900
6. Control Operations/Work Assignments:						
TASK: Patrol existing fireline. Identify line improvements and mop up needs						
PURPOSE: Keep fire within current perimeter.						
END STATE: Resident structures are protected and faire remains within the current footprint.						
7. Special Instructions:						
IWI IC						
<ul style="list-style-type: none"> • Take charge of scene • Contact Medic: BK radio TAC 6 or State Radio Interop 5. • Contact Div Sup & Tiger Island Communications as IWI IC • Follow Incident Medical Report • For back-up IWI communications with Tiger Island Communications call 208-891-6743 • National Guard Air to Ground on Interop 3. 						
COMMAND CHANNEL STATE RADIO: CHANNEL 12 R6-COORDTK1						
8. Division/Group Communication Summary						
Function	Channel	RX Frequency N/W	RX Tone/NAC	TX Frequency N/W	TX Tone/NAC	Mode
TACTICAL	6	168.2500N	110.9	168.2500N	110.9	A
COMMAND	10	170.9750N	110.9	168.7000N	110.9	A
AIR TO GROUND	13	168.4000N		168.4000N		A
AIR TO GROUND	14	166.6125N		166.6125N		A
9. Prepared By (Resource Unit Leader)			Approved By (Planning Section Chief)		Date	Time
RICH AUBUCHON			KELLY RUSSELL		09/01/2023	2200

Division/Group Assignment List (ICS 204 WF)
Controlled Unclassified Information//Basic

1. Incident Name:				3.		
TIGER ISLAND				Branch:	Division/Group ELIZABETH FIRE	
2. Operational Period: DAY						
Date/Time From: 09/02/2023 0700 SAT		Date/Time To: 09/02/2023 1900 SAT				
4. Operations Personnel						
OPERATIONS CHIEF		DAVE WALKER		BRANCH DIRECTOR		
DIVISION/GROUP SUPERVISOR		JOSH HAVIRD (T)		AIR ATTACK SUPERVISOR		
5. Resources Assigned this Period						
Strike Team / Task Force / Resource Designator		LWD	Leader	Number Persons	Drop Off PT./Time	Pick Up PT./Time
E-61 ENG6 PRO TEMPS INC.					/0700	/1900
E-66 ENG6 WILDLANDS FIRE SERVICE		09/15		2	/0700	/1900
E4.1 STEQ GS-GAS			MARCUS BEASLY	1	/0700	/1900
E-4.5 TRP3 GA-GAS			KEITH MBULO	1	/0700	/1900
E-4.8 TRP3 GA-GAS			BARRY BOHANNON	1	/0700	/1900
E-26.1 STEQ GA-GAS		09/12	LEE WEAVER	2	/0700	/1900
E-26.5 TRP3 GA-GAS		09/12	AARON PLAYER	1	/0700	/1900
E-26.8 TRP3 GA-GAS		09/12	TIM MYERS	1	/0700	/1900
O-79 SOFR		09/12	MARTEL KNIPE		/0700	/1900
C-104 AMBULANCE LAS-013				1	/0700	/1900
6. Control Operations/Work Assignments:						
<p>TASK: Establish control lines as needed, improve existing lines so they can be controlled by engines. Patrol for spot fires and slop-overs as needed. Mop up any threats to the containment lines.</p> <p>PURPOSE: To halt progression of the fire perimeter. Eliminate threats to homes and infrastructure surrounding the fire area.</p> <p>END STATE: All infrastructure and risk to the public has been mitigated,.</p>						
7. Special Instructions:						
8. Division/Group Communication Summary						
Function	Channel	RX Frequency N/W	RX Tone/NAC	TX Frequency N/W	TX Tone/NAC	Mode
COMMAND	10	170.9750N	110.9	168.7000N	110.9	A
TACTICAL	6	168.2500N	110.9	168.2500N	110.9	A
AIR TO GROUND	13	168.4000N		168.4000N		A
AIR TO GROUND	14	166.6125N		166.6125N		A
9. Prepared By (Resource Unit Leader)			Approved By (Planning Section Chief)		Date	Time
RICH AUBUCHON			KELLY RUSSELL		09/01/2023	2200

Division/Group Assignment List (ICS 204 WF)

Controlled Unclassified Information//Basic

1. Incident Name:		3.	
TIGER ISLAND		Branch:	Division/Group ELIZABETH FIRE
2. Operational Period: DAY			
Date/Time From: 09/02/2023 0700 SAT	Date/Time To: 09/02/2023 1900 SAT		
4. Operations Personnel			
OPERATIONS CHIEF	DAVE WALKER	BRANCH DIRECTOR	
DIVISION/GROUP SUPERVISOR	JOSH HAVIRD (T)	AIR ATTACK SUPERVISOR	

7. Special Instructions:

IWI IC

- Take charge of scene
- Contact Medic: BK radio TAC 6 or State Radio Interop 5.
- Contact Div Sup & Tiger Island Communications as IWI IC
- Follow Incident Medical Report
- For back-up IWI communications with Tiger Island Communications call 208-891-6743
- National Guard Air to Ground on Interop 3.

COMMAND CHANNEL STATE RADIO: CHANNEL 12 R6-CORDTK2

8. Division/Group Communication Summary						
Function	Channel	RX Frequency N/W	RX Tone/NAC	TX Frequency N/W	TX Tone/NAC	Mode
COMMAND	10	170.9750N	110.9	168.7000N	110.9	A
TACTICAL	6	168.2500N	110.9	168.2500N	110.9	A
AIR TO GROUND	13	168.4000N		168.4000N		A
AIR TO GROUND	14	166.6125N		166.6125N		A

9. Prepared By (Resource Unit Leader)		Approved By (Planning Section Chief)		Date	Time
RICH AUBUCHON		KELLY RUSSELL		09/01/2023	2200

Controlled Unclassified Information/Basic

ICS 205

INCIDENT RADIO COMMUNICATIONS PLAN		Incident Name TIGER ISLAND FIRE, HWY 113 FIRE, LIONS CAMP ROAD FIRE, ELIZABETH FIRE				Date/Time Prepared: September 01, 2023 1800 HRS	Operational Period Date/Time From: 09/02/23 0700 HRS To: 09/02/23 2400 HRS		
Ch #	Function	Channel Name/Trunked Radio System Talk Group	Assignment	RX Freq N or W	RX Tone/NAC	TX Freq N or W	Tx Tone/NAC	Mode	Remarks
1	TAC	TAC 1	DIV A-TIGER DIV W/S - HWY-113	168.0500N	110.9	168.0500N	110.9	A	
2	TAC	TAC 2	DIV F - TIGER DIV J - HWY-113	168.2000N	110.9	168.2000N	110.9	A	
3	TAC	TAC 3	DIV J - TIGER DIV F - HWY-113	168.6000N	110.9	168.6000N	110.9	A	
4	TAC	TAC 4	DIV OW - TIGER DIV A - HWY-113	166.7250N	110.9	166.7250N	110.9	A	
5	TAC	TAC 5	STRUCTURE GROUP	166.7750N	110.9	166.7750N	110.9	A	
6	TAC	TAC 6	ELIZABETH FIRE, LIONS CAMP FIRE	168.2500N	110.9	168.2500N	110.9	A	Elizabeth and Lions Camp Road Fires
7	TAC	D4 WEST TALK		151.3700N	110.9	151.3700N	110.9	A	Local and State units
8	TAC	WEST FIRE 1		151.4000N	110.9	151.4000N	110.9	A	Local and State units
9	TAC	VFIRE 21		154.2800N	156.7	154.2800N	156.7	A	Local and State units
10	COMMAND	CMD 1	ALL DIVS	170.9750N	110.9	168.7000N	110.9	A	Command Repeater for Tiger Island
11								A	
12									
13	AIR TO GROUND	A/G PRI	A/G PRIMARY	168.4000N		168.4000N		A	Air to Ground Primary
14	AIR TO GROUND	A/G SEC	A/G SECONDARY	166.6125N		166.6125N		A	Air to Ground Secondary
15									
16	AIR GUARD	AIRGUARD	ALL	168.6250N	110.9	168.6250N	110.9	A	Air Guard
5. Prepared by (Communications Unit) Jerry W Patrick, COML		Incident Location: TIGER ICP County/State LA		Latitude / Longitude: ° / °					

The convention calls for frequency lists to show four digits after the decimal place, followed by either an "N" or a "W", depending on whether the frequency is narrow or wide band. Mode refers to either "A" or "D" indicating analog or digital (Project 25).


*****Special Instructions: Use Human Repeater When Necessary.*****

AIR OPERATIONS SUMMARY

Prepared By: Darlene Hall

Prepared Date/Time: 8/31/2023

1. INCIDENT NAME: Tiger Island Fire		2. OPERATIONAL PERIOD DATE: 9/1/2023		Start Time 7:00		End Time 20:00		Sunrise 6:50		Sunset 19:36	
---	--	--	--	---------------------------	--	--------------------------	--	------------------------	--	------------------------	--

3. REMARKS (Safety Notes, Hazards, Air Operations Special Equipment,, etc.):		5. TFR DESCRIPTION:									
Helibase Location: Beauregard Regional Airport											
Tiger Island Helibase 30° 49.54'N / 93° 20.24'W											
4. MEDEVAC A/C: Med Air Refer to Medical Plan		TFR # 3/3287 Freq- 120.600 Polygon 3,000' MSL 30, 50.36N / 93, 35.40W 30, 42.50N / 93, 27.11 W 30, 42.46N / 93, 16.40W 30, 36.28N / 93 16.52W 30, 36.31N / 93 35.31W									
Email cost summaries to: 2023.tigerisland.finance@firenet.gov											

6. PERSONNEL		Phone	7. FREQUENCIES			8. FIXED-WING (# Avail/Type/Make-Model/FAA N#/Bases)	
AOBD	Darlene Hall	530-228-6004	A/A Primary	AM	FM	Airtankers Available on request (AEX)	
AOBD	Brad Bernardy	601-540-6528	A/A Secondary	120.600			
ASGS-T	Clint Davis	479-243-8646		134.975		SEATs Other: Scoopers	
			A/G Primary		168.400	2 Available on request	
HEBM	Jake Pastoruis	406-459-4558	A/G Secondary		166.6125		
HEBM- T	Cameron Magenck	719-252-3457	Command		RX170.975	57LF Available @ LCH 8PQ Available @ DRI	
					TX168.7000		
HMGB- OMB	Peter McDermit	860-593-6564			T-110.9		
HMGB- 5PJ	Jason Nolde	337-397-2523	DIVs Contact Military		Inner ops		
HMGB-47V	Daniel Patterson	404-640-0547	Helicopters on the State Radio		State 3		
HMGB-8MG	John Ortega	562-810-9817	DECK		163.1000		

9. HELICOPTERS (Use Additional Sheets As Necessary)													
FAA #	TYPE	MAKE/MODEL	BASE	AVAIL	START	REMARKS	FAA #	TYPE	MAKE/MODEL	BASE	AVAIL	START	REMARKS
OMB	1	Kmax	DRI	0700	0730	Buckets	Guard	1	UH-60A	KESF	0900	0930	
5PJ	1	UH-60A	DRI	0700	0730	Buckets	Guard	1	UH-60A	KESF	0900	0930	
760HT	1	S-61	DRI	0700	0730	Buckets	Guard	1	UH-60A	KESF	0900	0930	
115	1	UH-60A	DRI	0700	0730	Buckets	Guard	1	UH-60A	KESF	0900	0930	
47V	2	58T	DRI	0700	0730	Buckets							
353RC	2	205+	DRI	0700	0730	Buckets							
8MG	3	AS350	DRI	0700	0730	Recon & Missions							


ICS-220

AIR OPERATIONS SUMMARY

Prepared By: Darlene Hall

Prepared Date/Time: 9/1/2023

1. INCIDENT NAME: HWY 113 Fire	2. OPERATIONAL PERIOD DATE: 9/2/2023	Start Time 7:00	End Time 20:00	Sunrise 6:50	Sunset 19:36
---	--	--------------------	-------------------	-----------------	-----------------

3. REMARKS (Safety Notes, Hazards, Air Operations Special Equipment,, etc.): Helibase Location: Beauregard Regional Airport Tiger Island Helibase 30° 49.54'N / 93° 20.24'W		5. TFR DESCRIPTION: TFR # 3/4500 Freq- 118.350 Polygon 31, 00.15N / 92, 50.00W 31, 00.15N / 92, 54.30 W 31, 06.00N / 92, 50.30W 31, 06.00N / 92, 41.00W 30, 49.00N / 92, 43.00W 30, 49.00N / 92, 58.00W
--	---	---

4. MEDEVAC A/C: Med Air Refer to Medical Plan	Email cost summaries to: pinekn03@hotmail.com (Clinton Davis)	
--	---	--

6. PERSONNEL	Phone	7. FREQUENCIES	AM	FM	8. FIXED-WING (# Avail/Type/Make-Model/FAA N#/Bases)
AOBD	Darlene Hall	A/A Primary	118.3500		Airtankers
AOBD	Brad Bernardy	A/A Secondary	119.4750		
ASGS-T	Clint Davis	A/G Primary		151.400 T-110.9	SEATs Other: Scopcers
HEBM	Jake Pastoruis	A/G Secondary			
HEBM- T	Cameron Magenck				Air Attack
					57LF Available @ LCH 8PQ Available @ DRI
HMGB- 0MB	Peter McDermit				
HMGB- 5PJ	Jason Nolde				
HMGB-47V	Daniel Patterson				
HMGB-8MG	John Ortega	DECK		163.1000	

9. HELICOPTERS (Use Additional Sheets As Necessary)						
FAA #	TYPE	MAKE/MODEL	BASE	AVAIL	START	REMARKS
0MB	1	Kmax	DRI	0700	0730	Buckets
5PJ	1	UH-60A	DRI	0700	0730	Buckets
760HT	1	S-61	DRI	0700	0730	Buckets
115		205+	DRI	0700	0730	Buckets
47V	2	58T	DRI	0700	0730	Buckets
353RC	2	205+	DRI	0700	0730	Buckets
8MG	3	AS350	DRI	0700	0730	Recon & Missions

DAILY FINANCE PROCESSES

- **If you are an AD**, we need a copy of your **Casual Hire** form & **Resource Order**.
- **If you are a Cooperator or Contractor**, we need a copy of your **Agreement/Contract** and **Resource Order**.
- **All Contract/Cooperator Equipment** needs to have a **Pre-Use Inspection** form.
- **If you are a Crew**, we need a copy of your **Manifest** as well as the documents mentioned above.
- **If you are an Overhead Resource**, we need a copy of your **Resource Order**.



CTRS: No more than 2 Days per CTR



Shift Ticket: 1 day per ticket only

ALL: Please email your CTRs, Shift Tickets and any of the documents mentioned above as a PDF (no JPEG) to:

2023.tigerisland.finance@firenet.gov

In the SUBJECT LINE put OVERHEAD with O# or EQUIPMENT with E# to help identify the content in the email.

The finance staff will attend all briefings. If you have any questions or need assistance in submitting your information!

DEMOB

!!ATTENTION ALL RESOURCES!!

To ensure we leave a complete finance package that allows LA-LAS to file the FMAG and complete billing, we must have all supporting expense documentation sent back to the incident. You must email a copy of your complete final payment document with all receipts and itemized expense records for these fires to the following email box.

2023.tigerisland.finance@firenet.gov

In the SUBJECT LINE include the name of the Fire on your initial resource order along w/ RO#.

Tiger Island (LA-LAS-000252) FWS Code: FFF2500000**QK8T0**
NPS Code: PP.FS**QK8T**D23.00.1
USFS code: (1522) PN**QK8T**23

Highway 113 (LA-LAS-000256) FWS Code: FFF2500000**QLON 0**
NPS Code: PP.FS**QLON**23.00.1
USFS code: (1522) PN**QLON**23

Lions Camp Rd (LA-LAS-000281) FWS Code: FFF2500000**QL6R0**
NPS Code: PP.FS**QL6R**D23.00.1
USFS code: (1522) PN**QL6R**23

Elizabeth (LA-LAS-000296) FWS Code: FFF2500000**QL6Q0**
NPS Code: PP.FS**QL6Q**D23.00.1
USFS code: (1522) PN**QL6Q**23

Examples of Expenses that need to be included in packet/email post DEMOB:

1. Final OF-286/ OF-288 to include closed out travel home time.
2. Final copy of Travel Voucher and/or Travel Reimbursement to include ALL applicable receipts such as:
 - Resource Order/Travel Authorization
 - Airline Cost; to include receipt if charge was on your credit card
 - Airline Baggage Fees
 - Rental Car Cost; to include receipt if charge was on your credit card
 - Per Diem
 - Lodging
 - Rental Car Gas
 - AOV Gas Receipts
 - Airport Parking

Training Message

The Tiger Island Fire has 37 trainees that have currently checked in with the Training Specialist. There are trainees representing all sections: Command, Operations, Air Operations, Logistics, Plans, and Finance.

If you are working as a trainee on the Tiger Island Fire, no matter the position, please check in with the Training Specialist. Bring your Task Book, your red card, your Order #, and your coach/evaluator to the Training Specialist at the Status Check-In table inside the front door in the ICP. This will take you less than 5 minutes. It will help us track numbers and positions and it will produce a good training packet that will be emailed to the person you designate to document your experience.

If you are a trainee on the Hwy 113 Fire, the Elizabeth Fire or the Lions Camp Road Fire, please contact me by phone (850.556.8623) or email (gseamon@talltimbers.org) to begin documenting your training assignment.

Greg Seamon
Training Specialist
09/02/2023

Tiger Island ICP Map





VERNON PARISH FAIRGROUNDS

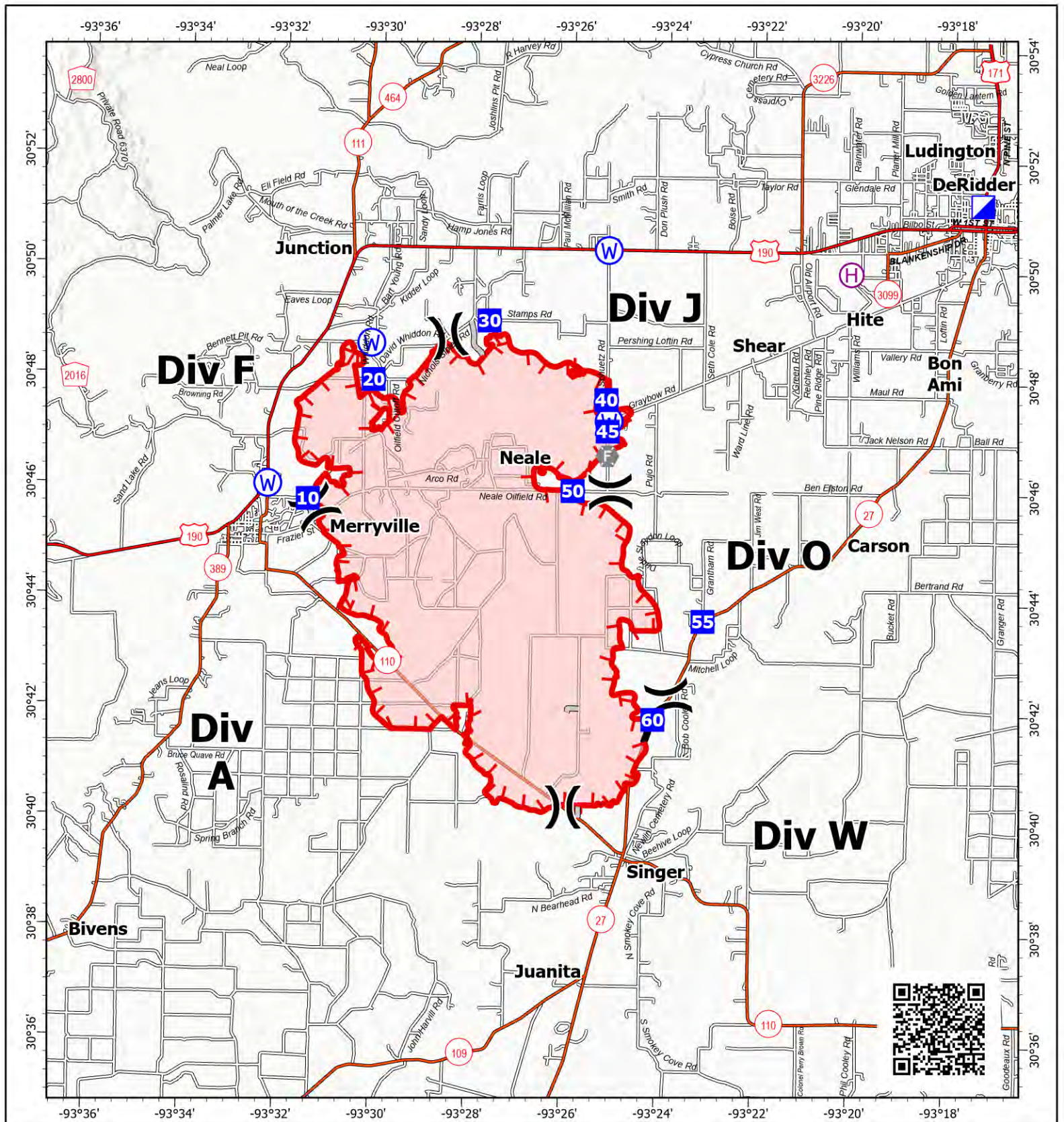
276 HM Stevens Blvd. Leesville, LA

Directions from Deridder:

- Head north on LA 171 to Leesville, LA
- At the light past the CVS, turn left onto LA 8 (Nolan Trace Rd.) There is an airport direction sign.
- Turn Right in approximately 1.5 miles (just past the Chevron gas station) onto HM Stevens Blvd.
- HM Stevens Blvd. dead ends into the fairgrounds
- Go to Exhibit Hall, 2nd building on the right after you enter the fairgrounds.

Equipment parking (DO NOT ENTER THRU MAIN GATE!)

Located on Forest Festival Drive, a left turn just before the Fairgrounds Main Gate off HM Stevens Blvd. (20 acres of parking available) – big field to the left before you reach the fairgrounds main gate – turn into that side gate.

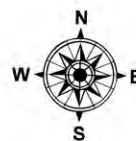


IAP Map

Tiger Island
LA-LAS-000252

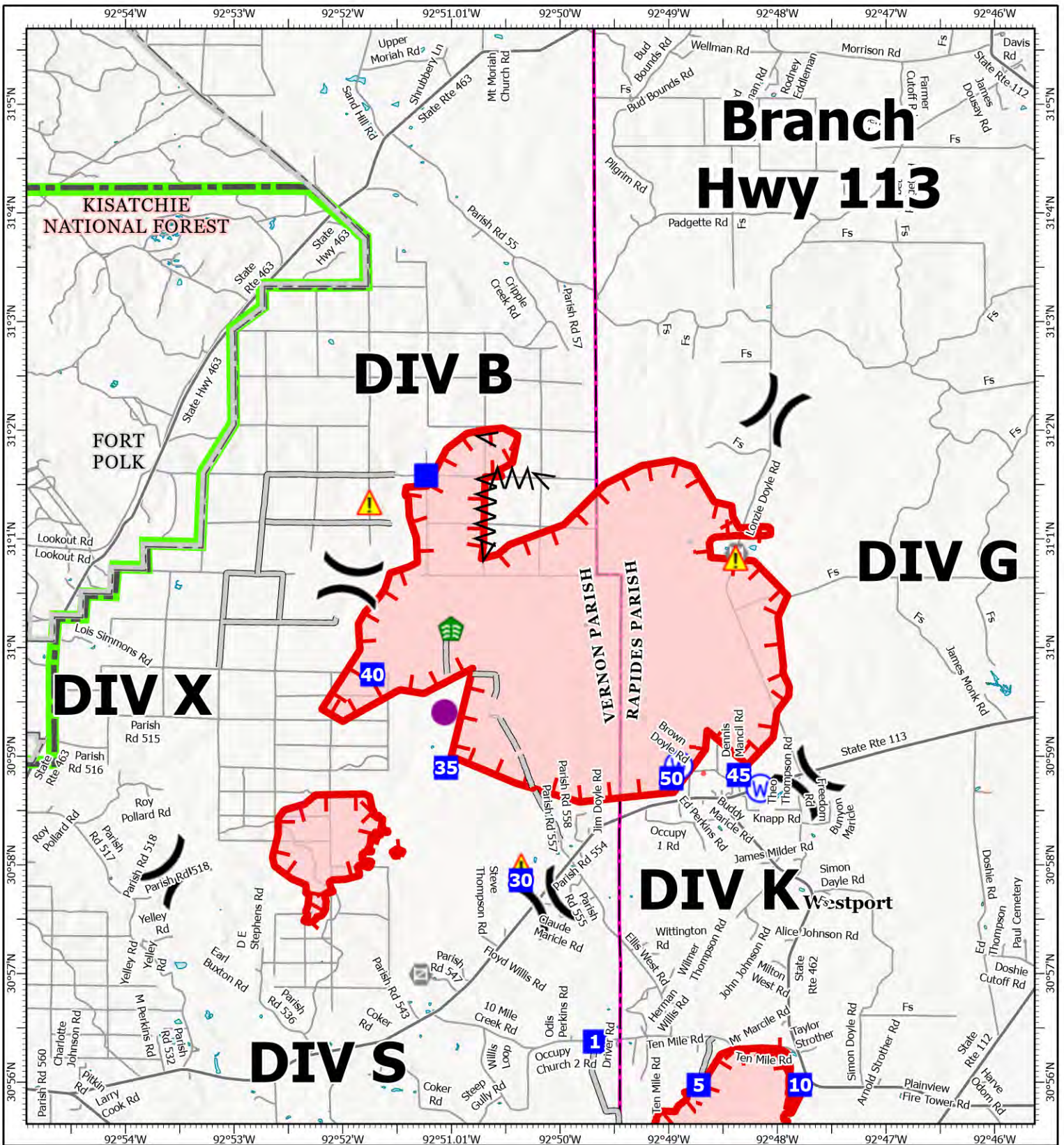
September 2, 2023 Day

31,342 acres at August 29, 2023 0345



- Helibase
- Division Break
- Incident Command Post
- Drop Point
- Fire Station
- Water Source
- Access or Improved Road
- Contained
- Uncontained
- Wildfire Daily Fire Perimeter

1:170,000 | SA Red Team GIS | 9/1/2023 1928
Acres from IR and GPS
North American 1983 Datum, LatLong Grid



IAP Map

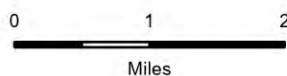
Hwy 113

LA-LAS-000256

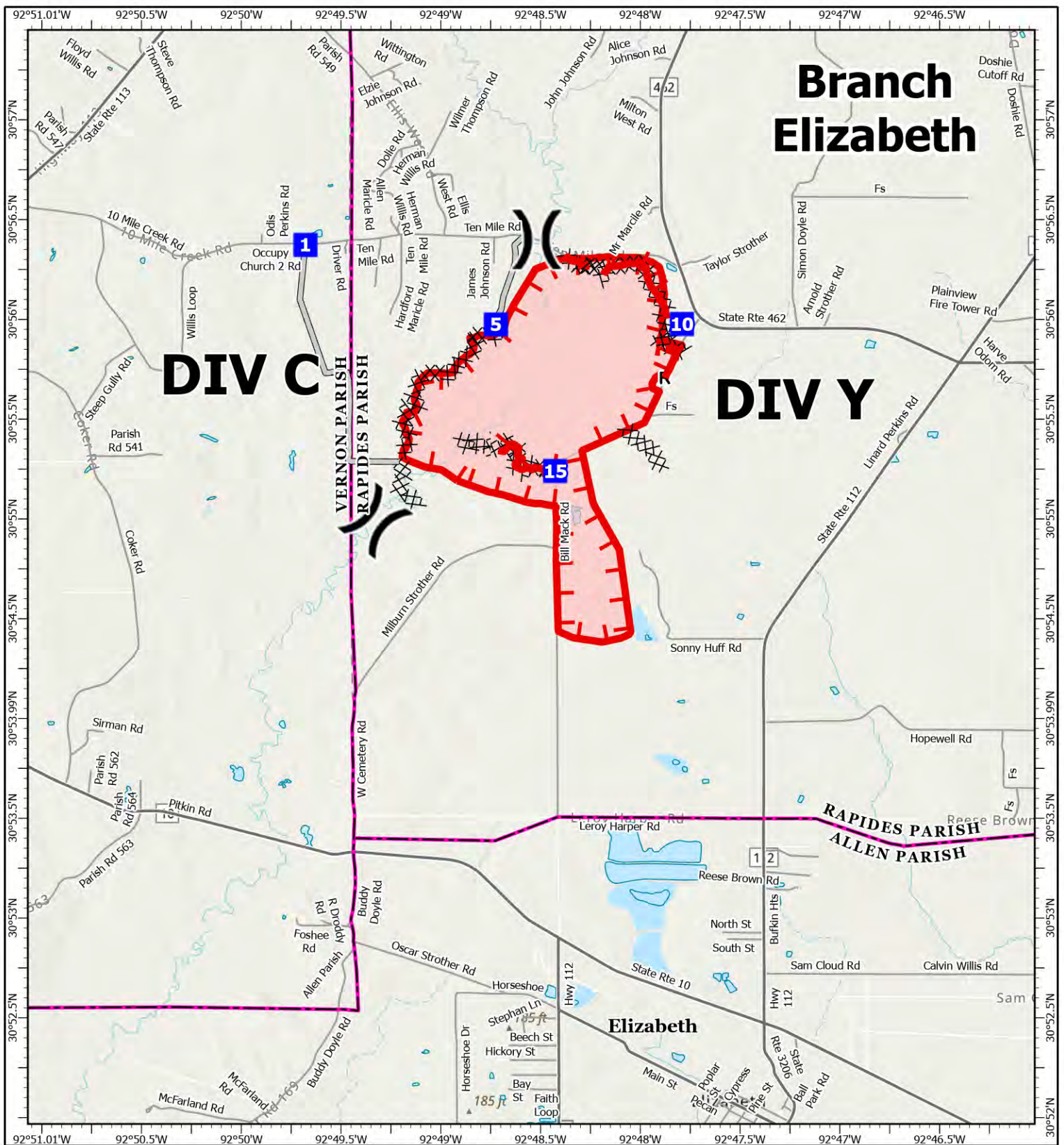
September 2, 2023

7,031 acres

1:90,000 | SA Red Team GIS | 9/1/2023 2110
 Acres from IR and GPS
 WGS 1984 Datum. LatLong Grid



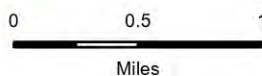
- State or Territory
- County or Equivalent
- Department of Defense
- Forest Service
- Local Connector
- Local Road
- Helispot
- Drop Point
- Gate
- Stream Crossing
- Division Break
- Hazard
- Water Source
- Completed Fuel Break
- Access or Improved Road
- Fire Edge (Field Collection)
- Uncontained Wildfire Daily Fire Perimeter



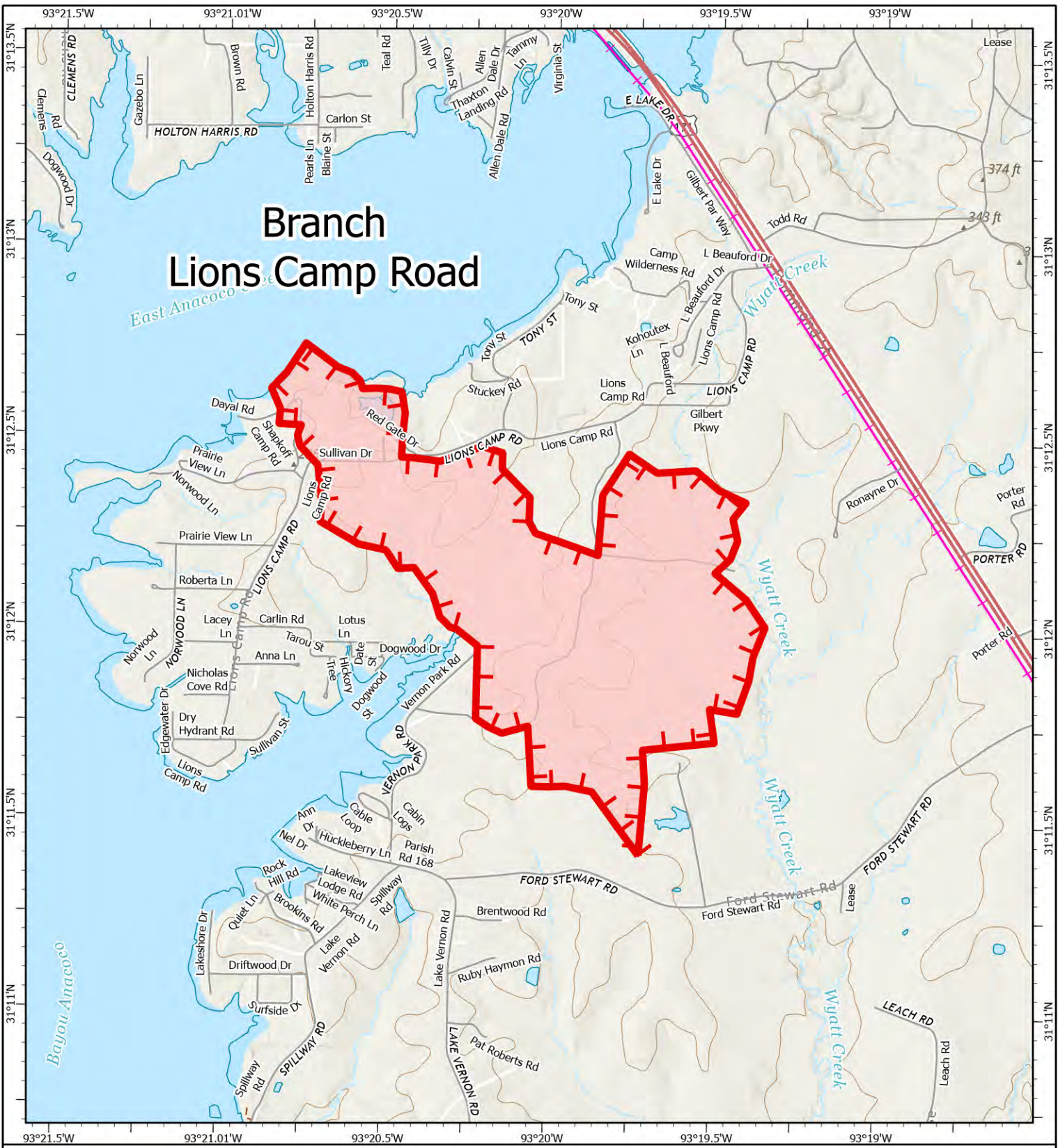
IAP Map Elizabeth

LA-LAS-000281
September 2, 2023
943 acres

1:48,947 | SA Red Team GIS | 9/1/2023 2036
Acres from IR and GPS
WGS 1984 Datum. LatLong Grid



- State or Territory
- County or Equivalent
- Local Connector
- Local Road
- Drop Point
- Completed Dozer Line
- Completed Road as Line
- Access or Improved Road
- Fire Edge (Field Collection)
- Uncontained
- Wildfire Daily Fire Perimeter
- Division Break

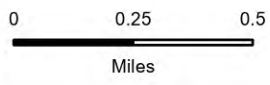


IAP Map

Lions Camp Road

LA-LAS-000281
 September 2, 2023
 579 acres

1:25,447 | SA Red Team GIS | 9/1/2023 2050
 Acres from IR and GPS
 North American 1983 Datum. LatLong Grid



- State or Territory
- County or Equivalent
- Secondary Hwy
- Local Road
- Railroads
- Uncontained
- Wildfire Daily Fire Perimeter

MEDICAL PLAN (ICS 206 WF)

Controlled Unclassified Information//Basic

For medical emergencies see special instructions on 204

1. Incident/Project Name				2. Operational Period				
Tiger Island, Hwy 113, Lions Camp Road, Elizabeth				09/02/23 0700-1900				
2. Medical Aid Stations								
3. Ambulance Services								
Name	Location	Phone	Advanced Life Support					
			Yes	No				
LA 009	Day - Division F	Contact Tiger Island Communications	X					
LA 018	Day - Division O/W		X					
LA 021	Day - Division J		X					
Ambu 1 (Fireline)	Day - Division J			X				
LA 013	Elizabeth		X					
LA 010	Lions Camp Road		X					
Ambu 8-11	Hwy 113 Fire		X					
Ambu 7-11	Hwy 113 Fire		X					
Ambu 11-41	Hwy 113 Fire		X					
Local EMS	<i>For emergencies outside of incident</i>		911	X				
4. Air Ambulance Services								
Name	Location, Capabilities			Advanced Life Support (ALS)				
				Yes	No			
Coast Guard New Orleans Sector (504) 589-6225	2-2.5 hr response time Hoist, Night Vision, BLS Houston or New Orleans				X			
Air Evac Lifeteam 125 (800) 247-3822	Kinder, LA Lat/Long 30°29.00' -92°51.02'			X				
Acadian Air Med (337) 291-1594	Lake Charles Regional Airport Lat/Long 30° 04.40', -93° 08.50'			X				
5. Hospitals								
Name/Address	GPS Datum – WGS 84 Coordinate Standard		Tiger Island Travel Time		Phone	Helipad		Level of Care Facility
	Lat:	Long:	Air	Gnd		Yes	No	
Ochsner LSU Health Shreveport 1541 Kings Highway Shreveport, LA 71103	Lat:	32° 29.724'	40 min	113 min	(318) 626-0000	X		L1 Trauma, STEMI, Stroke, Burn Center
	Long:	-93° 45.000'						
Beauregard Health Center 600 S Pine St, DeRidder, LA 70634	Lat:	30° 50.461'	20 min	40 min	(337) 462-7100	LZ		Basic ER
	Long:	-93° 17.250'						
	VHF:							
Rapides Regional Medical 211 4th St Alexandria, LA 71301	Lat:	34° 43.566'	30 min	105 min	(318) 769-3000	X		L2 Trauma, STEMI
	Long:	-79° 3.041'						
	VHF:							
Byrd Regional Hospital 1020 Fertitta Blvd. Leesville, LA 71446	Lat:	35° 54.303'	20 min	40 min	(337) 239-9041	X		Stroke
	Long:	-90° 4.964'						
	VHF:							
6. Clinics								
Outpatient Medical Center	908 S 10th St Suite B, Leesville, LA (337) 238-1274 (0800-1800 Mon, Tue, Thu; 0800-1700 Wed; 0800-1300 Fri)							

8. Prepared By (Medical Unit Leader)	9. Date/Time	10. Reviewed by (Safety Officer)	
Nick Arnett, MEDL (408) 888-1900 Rich D'Orazio, MEDL (239) 249-1855	09/01/2023	Ed Bratcher SOFC (t)	

IWI IC Responsibilities – Division Group Supervisor or Point of Contact

- Take charge of the scene – inform the Division Supervisor and Tiger Island Communications that you are the IWI IC and establish radio communications (frequencies, channels). Identify the emergency name – Division A medical, etc.
- **For backup IWI communication, call the IWI phone: (208) 891-6743.**
- Assign or begin patient assessment (Medical Incident Report - MIR) and first aid. Request additional medical resources on division/branch or across incident. Transmit MIR patient information to Communications.
- Determine patient transportation through consultation with line medical personnel and Medical Unit Leader. Consider transportation time, risk to personnel, destination facility and available operational resources. If air transport is chosen, implement the plan for alternative transportation in the event aircraft cannot complete the mission. Order transportation resources through Communications as early as possible.
- Notify Communications as resources arrive and any patient status changes. Names of injured or deceased individuals will not be transmitted on the radio.
- Initiate documentation for future investigation; if a line safety officer is available, assign them to lead documentation. Do not move deceased individuals, gear or personal effects except to accomplish rescue work or protect the safety of others. Obtain written documentation of witnesses. Unit Log, ICS 214, may be used for initial documentation, but a narrative will be required.
- As appropriate, conduct an After Action Review to determine successes, areas to improve and lessons learned.

7. Division Branch Group	Area Location Capability	
Div A	EMS Responders & Capability:	<i>None Assigned</i>
Div F	EMS Responders & Capability:	Ambu LA 009 (ALS) 318-243-3150 EMPF Jason Olson (ALS) 760-445-4477 Medic Team 2 (Fireline ALS UTV) 479-225-0836
Div J	EMS Responders & Capability:	Ambu LA 021 (ALS) 504-310-5620 Medic Team 1 (Fireline ALS UTV) 479-236-6684 Ambu 1 (Fireline, 4WD, BLS)
Div O/W	EMS Responders & Capability:	Ambu LA 018 (ALS) 337-692-7279
ICP	EMS Responders & Capability:	MEDL Nick Arnett (BLS) 408-888-1900 MEDL Rich DOrazio (BLS) 239-249-1855 MEDL(t) Jason Fusilier (BLS) 337-660-5990
HWY 113	EMS Responders & Capability:	Supv. Brent Wilson (Fireline ALS) 817-559-4291 Ambu 8-11 (ALS) 830-391-3287 Ambu 7-11 (ALS) 713-443-8213 Ambu 11-14 (ALS) 956-326-8637 Medic Team 2-11 (Fireline ALS) 214-336-1988 Medic Team 2-10 (Fireline ALS) 325-338-7545 Medic Team 4-1 (Fireline ALS) 903-243-4300
Elizabeth	EMS Responders & Capability:	Ambu LA 013 (ALS) 318-548-0349
Lions Camp Rd	EMS Responders & Capability:	Ambu LA 010 (ALS) 318-228-9107

For medical emergencies see special instructions on 204

Medical Incident Report

FOR A **NON-EMERGENCY INCIDENT**: WORK THROUGH CHAIN OF COMMAND TO REPORT AND TRANSPORT INJURED PERSONNEL AS NECESSARY.

FOR A **MEDICAL EMERGENCY**: IDENTIFY ON SCENE INCIDENT COMMANDER BY NAME AND POSITION AND ANNOUNCE **"MEDICAL EMERGENCY"** TO INITIATE RESPONSE FROM COMMUNICATIONS

Use the following items to communicate situation to communications/dispatch.

1. CONTACT COMMUNICATIONS / DISPATCH **(Verify correct frequency prior to starting report)**
Ex: "Tiger Island Communications, Div. Alpha. Stand-by for Emergency Traffic."
2. INCIDENT STATUS: *Provide incident summary (including number of patients) and command structure.*
Ex: "Tiger Island Communications, I have a Red priority patient, unconscious, struck by a falling tree. Requesting air ambulance to Forest Road 1 at (Lat./Long.) This will be the Trout Meadow Medical Incident, IC is TFLD Jones. EMT Smith is providing medical care."

Severity of Emergency AND Transport Priority (priority 1, 2, 3)	<input type="checkbox"/> RED / PRIORITY 1 Life or limb threatening injury or illness. Evacuation need is IMMEDIATE <i>Ex: Unconscious, difficulty breathing, bleeding severely, 2° – 3° burns more than 4 palm sizes, heat stroke, disoriented.</i>	
	<input type="checkbox"/> YELLOW / PRIORITY 2 Serious Injury or illness. Evacuation may be DELAYED if necessary. <i>Ex: Significant trauma, unable to walk, 2° – 3° burns not more than 1-3 palm sizes.</i>	
	<input type="checkbox"/> GREEN / PRIORITY 3 Minor Injury or illness. Non-Emergency transport <i>Ex: Sprains, strains, minor heat-related illness.</i>	
Nature of Injury or Illness & Mechanism of Injury		<i>Brief Summary of Injury or Illness (Ex: Unconscious, Struck by Falling Tree)</i>
Transport Request		<i>Air Ambulance / Short Haul/Hoist Ground Ambulance / Other</i>
Patient Location		<i>Descriptive Location & Lat. / Long. (WGS84)</i>
Incident Name		<i>Geographic Name + "Medical" (Ex: Trout Meadow Medical)</i>
On-Scene Incident Commander		<i>Name of on-scene IC of Incident within an Incident (Ex: TFLD Jones)</i>
Crew Patient Care		<i>Name of Care Provider (Ex: EMT Smith)</i>

3. INITIAL PATIENT ASSESSMENT: *Complete this section for each patient as applicable (start with the most severe patient)*

Patient Assessment: Age: Weight: Chief Complaint:
 (IRPG PAGE 106)

Skin Signs: (color/moisture/temp) Level of Consciousness: BP: HR: Respirations:

Treatment:

4. TRANSPORT PLAN:

Evacuation Location (*drop point, intersection, helispot, Lat. / Long, hazards*) Patient's ETA to Location:

5. ADDITIONAL RESOURCES / EQUIPMENT NEEDS:

Paramedic / EMT - Crews - Immobilization Devices - AED - Oxygen - Trauma Bag - IV/Fluid(s) - Splints - Rope rescue - Wheeled litter - HAZMAT - Extrication

6. COMMUNICATIONS: Identify State Air/Ground EMS Frequencies and Hospital Contacts as applicable

Function	Channel Name/Number	Receive (RX)	Tone/NAC *	Transmit (TX)	Tone/NAC *
COMMAND					
AIR-TO-GRND					
TACTICAL					

7. CONTINGENCY: **Considerations: If primary options fail, what actions can be implemented in conjunction with primary evacuation method? Be thinking ahead.**

8. ADDITIONAL INFORMATION: *Updates/Changes, etc.*

**REMEMBER: Confirm ETA's of resources ordered. Act according to your level of training
 Be Alert - Keep Calm - Think Clearly - Act Decisively**

*** Follow up with MEDL upon return to ICP ***

