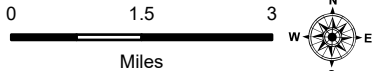


Pilot

Tiger Island
LA-LAS-000252

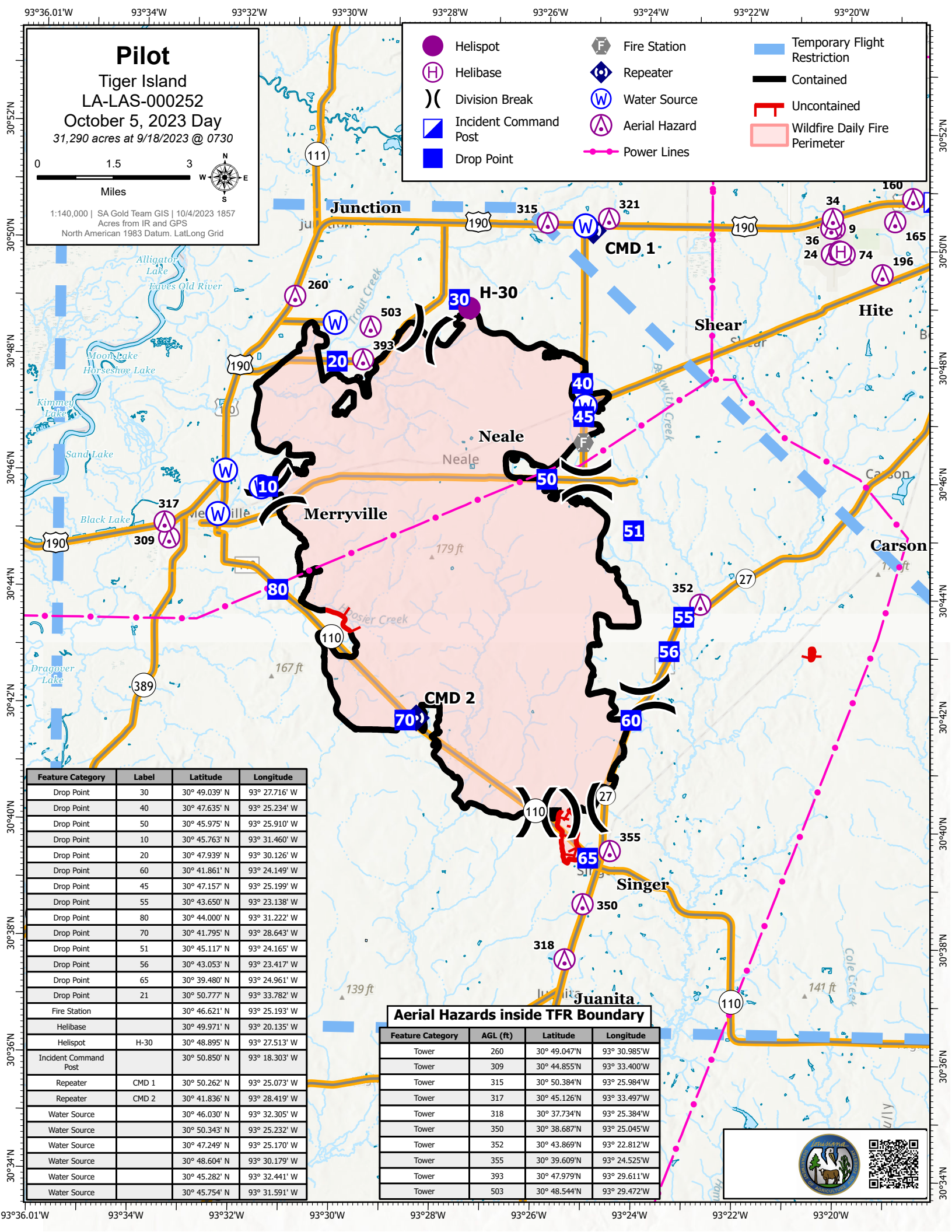
October 5, 2023 Day

31,290 acres at 9/18/2023 @ 0730



1:140,000 | SA Gold Team GIS | 10/4/2023 1857
Acres from IR and GPS
North American 1983 Datum, LatLong Grid

- Helispot
- Fire Station
- Temporary Flight Restriction
- Helibase
- Repeater
- Contained
- Division Break
- Water Source
- Uncontained
- Incident Command Post
- Aerial Hazard
- Power Lines
- Drop Point
- Wildfire Daily Fire Perimeter



Feature Category	Label	Latitude	Longitude
Drop Point	30	30° 49.039' N	93° 27.716' W
Drop Point	40	30° 47.635' N	93° 25.234' W
Drop Point	50	30° 45.975' N	93° 25.910' W
Drop Point	10	30° 45.763' N	93° 31.460' W
Drop Point	20	30° 47.939' N	93° 30.126' W
Drop Point	60	30° 41.861' N	93° 24.149' W
Drop Point	45	30° 47.157' N	93° 25.199' W
Drop Point	55	30° 43.650' N	93° 23.138' W
Drop Point	80	30° 44.000' N	93° 31.222' W
Drop Point	70	30° 41.795' N	93° 28.643' W
Drop Point	51	30° 45.117' N	93° 24.165' W
Drop Point	56	30° 43.053' N	93° 23.417' W
Drop Point	65	30° 39.480' N	93° 24.961' W
Drop Point	21	30° 50.777' N	93° 33.782' W
Fire Station		30° 46.621' N	93° 25.193' W
Helibase		30° 49.971' N	93° 20.135' W
Helispot	H-30	30° 48.895' N	93° 27.513' W
Incident Command Post		30° 50.850' N	93° 18.303' W
Repeater	CMD 1	30° 50.262' N	93° 25.073' W
Repeater	CMD 2	30° 41.836' N	93° 28.419' W
Water Source		30° 46.030' N	93° 32.305' W
Water Source		30° 50.343' N	93° 25.232' W
Water Source		30° 47.249' N	93° 25.170' W
Water Source		30° 48.604' N	93° 30.179' W
Water Source		30° 45.282' N	93° 32.441' W
Water Source		30° 45.754' N	93° 31.591' W

Aerial Hazards inside TFR Boundary

Feature Category	AGL (ft)	Latitude	Longitude
Tower	260	30° 49.047' N	93° 30.985' W
Tower	309	30° 44.855' N	93° 33.400' W
Tower	315	30° 50.384' N	93° 25.984' W
Tower	317	30° 45.126' N	93° 33.497' W
Tower	318	30° 37.734' N	93° 25.384' W
Tower	350	30° 38.687' N	93° 25.045' W
Tower	352	30° 43.869' N	93° 22.812' W
Tower	355	30° 39.609' N	93° 24.525' W
Tower	393	30° 47.979' N	93° 29.611' W
Tower	503	30° 48.544' N	93° 29.472' W

