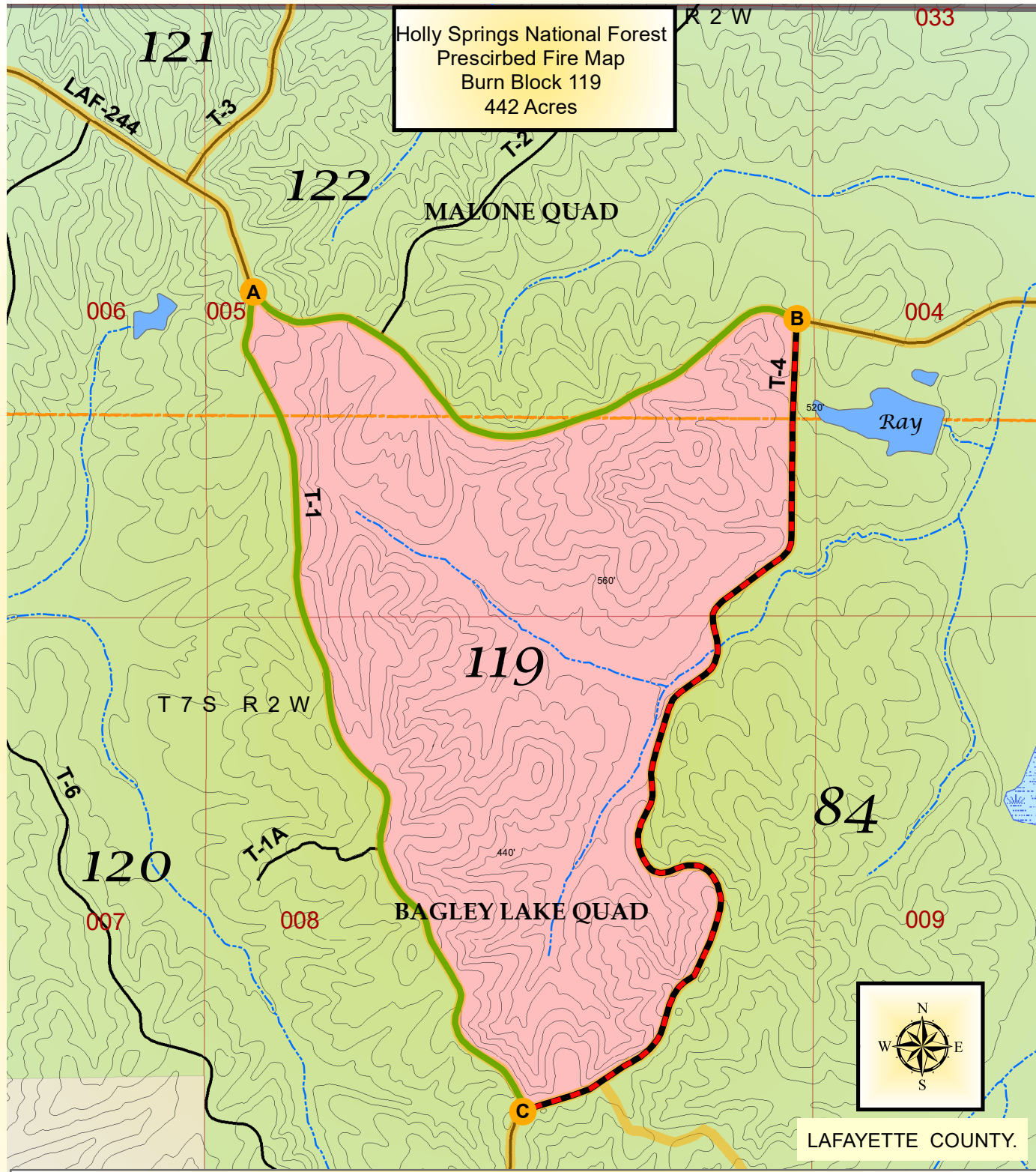


Holly Springs National Forest
 Prescribed Fire Map
 Burn Block 119
 442 Acres



LAFAYETTE COUNTY.

Map Symbols

0 0.075 0.15 0.3 Miles

SCALE:
 1:15,000
 MAP BY:
 JIM M. WALDEN
 11/15/2018

EXISTING HANDLINES
 EXISTING DOZER LINES
 CREEKS LINE
 BLADED WOODS RD.
 EXISTING ROADS LINE
 ARCH SITE HANDLINES

PROJECT AREA
 COUNTY LINES
 FOREST SERVICE OWNERSHIP
 PRIVATE OWNERSHIP

WETLANDS
 CEMETERY
 STREAMS / CREEKS

QUAD BOUNDARIES
 LAKES