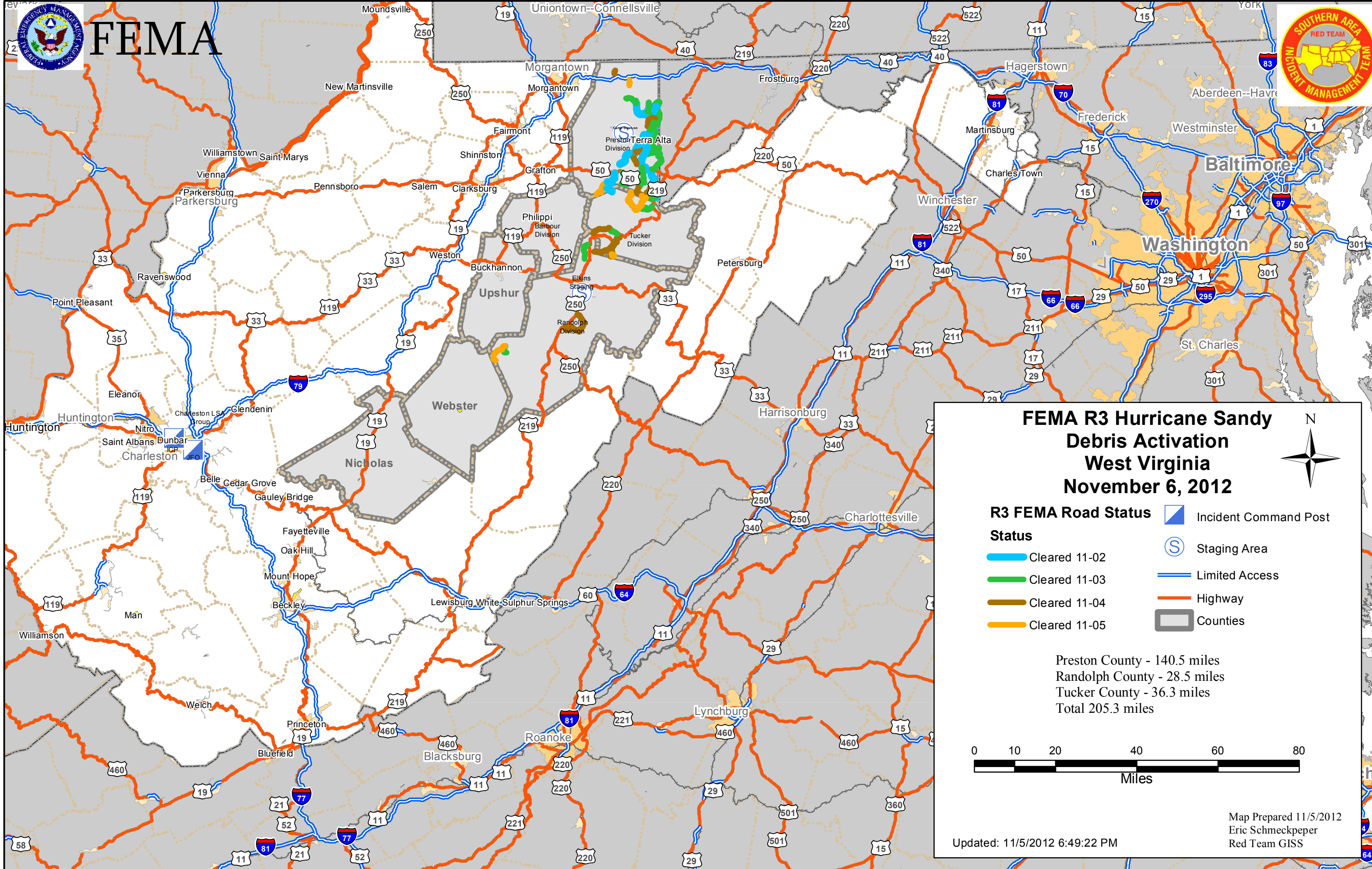




FEMA

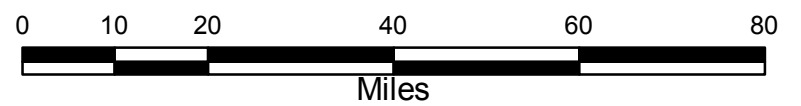


FEMA R3 Hurricane Sandy Debris Activation West Virginia November 6, 2012



- R3 FEMA Road Status**
- Incident Command Post
 - Staging Area
 - Limited Access
 - Highway
 - Counties
- Status**
- Cleared 11-02
 - Cleared 11-03
 - Cleared 11-04
 - Cleared 11-05

Preston County - 140.5 miles
 Randolph County - 28.5 miles
 Tucker County - 36.3 miles
 Total 205.3 miles



Updated: 11/5/2012 6:49:22 PM

Map Prepared 11/5/2012
Eric Schmeckpeper
Red Team GISS