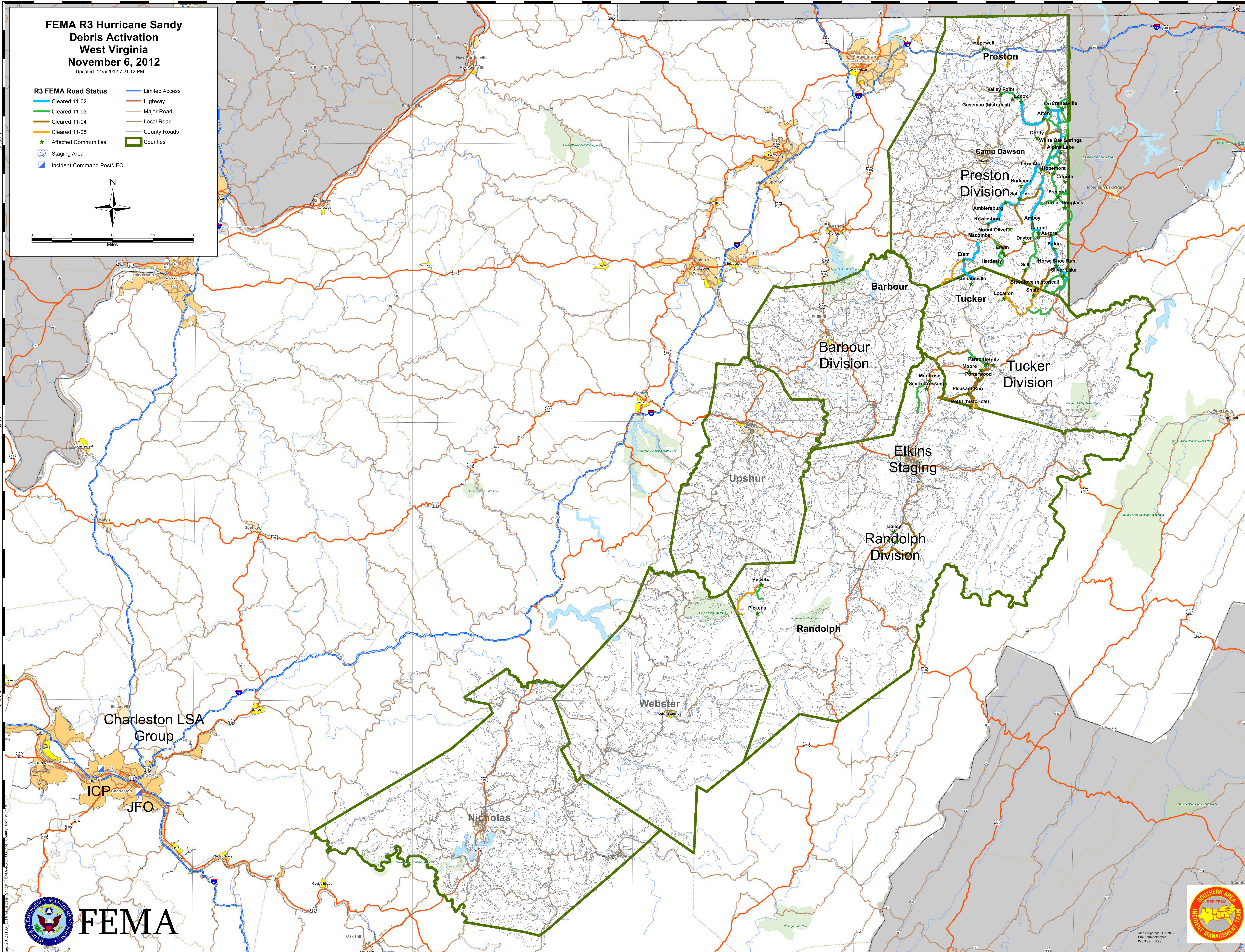
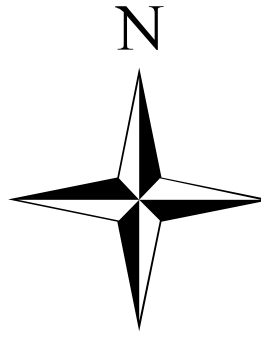


**FEMA R3 Hurricane Sandy
Debris Activation
West Virginia
November 6, 2012**

Updated: 11/5/2012 7:21:12 PM

- R3 FEMA Road Status**
- Cleared 11-02
 - Cleared 11-03
 - Cleared 11-04
 - Cleared 11-05
 - ★ Affected Communities
 - S Staging Area
 - I Incident Command Post/JFO
 - Limited Access
 - Highway
 - Major Road
 - Local Road
 - County Roads
 - Counties



Map Prepared: 11/5/2012
Eric Schickelmeier
Red Team GIS