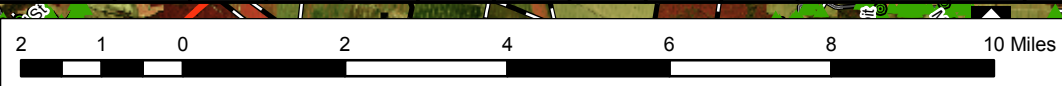
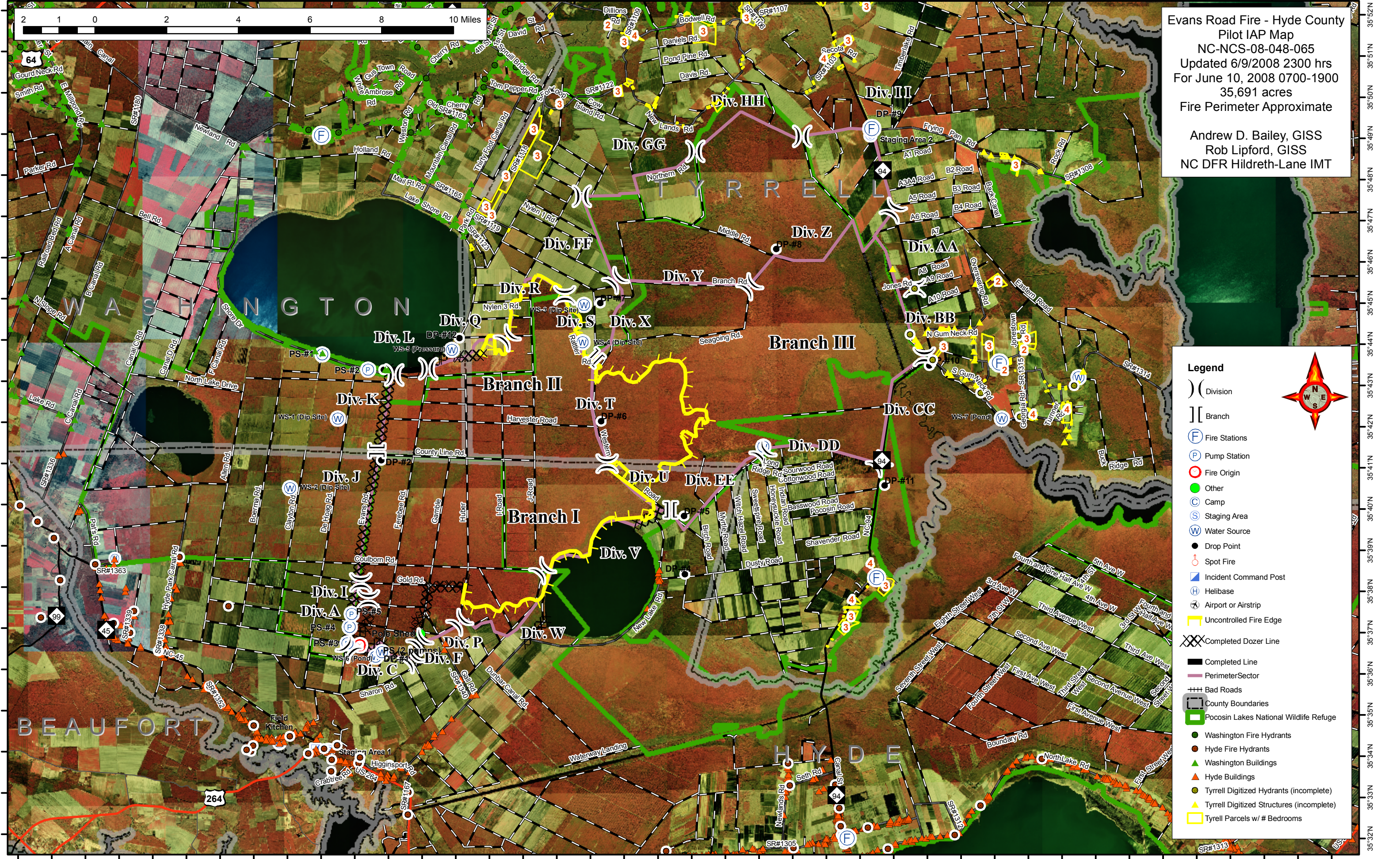


76°37'W 76°36'W 76°35'W 76°34'W 76°33'W 76°32'W 76°31'W 76°30'W 76°29'W 76°28'W 76°27'W 76°26'W 76°25'W 76°24'W 76°23'W 76°22'W 76°21'W 76°20'W 76°19'W 76°18'W 76°17'W 76°16'W 76°15'W 76°14'W 76°13'W 76°12'W 76°11'W 76°10'W 76°9'W 76°8'W 76°7'W 76°6'W 76°5'W 76°4'W 76°3'W 76°2'W 76°1'W 76°0'W 75°59'W 75°58'W




Evans Road Fire - Hyde County
Pilot IAP Map
NC-NCS-08-048-065
Updated 6/9/2008 2300 hrs
For June 10, 2008 0700-1900
35,691 acres
Fire Perimeter Approximate

Andrew D. Bailey, GISS
Rob Lipford, GISS
NC DFR Hildreth-Lane IMT



Legend

- () Division
- [] Branch
- (F) Fire Stations
- (P) Pump Station
- (O) Fire Origin
- (G) Other
- (C) Camp
- (S) Staging Area
- (W) Water Source
- (●) Drop Point
- (*) Spot Fire
- (IC) Incident Command Post
- (H) Helibase
- (A) Airport or Airstrip
- (Y) Uncontrolled Fire Edge
- (X) Completed Dozer Line
- (—) Completed Line
- (—) Perimeter Sector
- (---) Bad Roads
- (---) County Boundaries
- (■) Pocosin Lakes National Wildlife Refuge
- (●) Washington Fire Hydrants
- (●) Hyde Fire Hydrants
- (▲) Washington Buildings
- (▲) Hyde Buildings
- (●) Tyrrell Digitized Hydrants (incomplete)
- (▲) Tyrrell Digitized Structures (incomplete)
- (□) Tyrrell Parcels w/ # Bedrooms



76°38'W 76°37'W 76°36'W 76°35'W 76°34'W 76°33'W 76°32'W 76°31'W 76°30'W 76°29'W 76°28'W 76°27'W 76°26'W 76°25'W 76°24'W 76°23'W 76°22'W 76°21'W 76°20'W 76°19'W 76°18'W 76°17'W 76°16'W 76°15'W 76°14'W 76°13'W 76°12'W 76°11'W 76°10'W 76°9'W 76°8'W 76°7'W 76°6'W 76°5'W 76°4'W 76°3'W 76°2'W 76°1'W 76°0'W 75°59'W