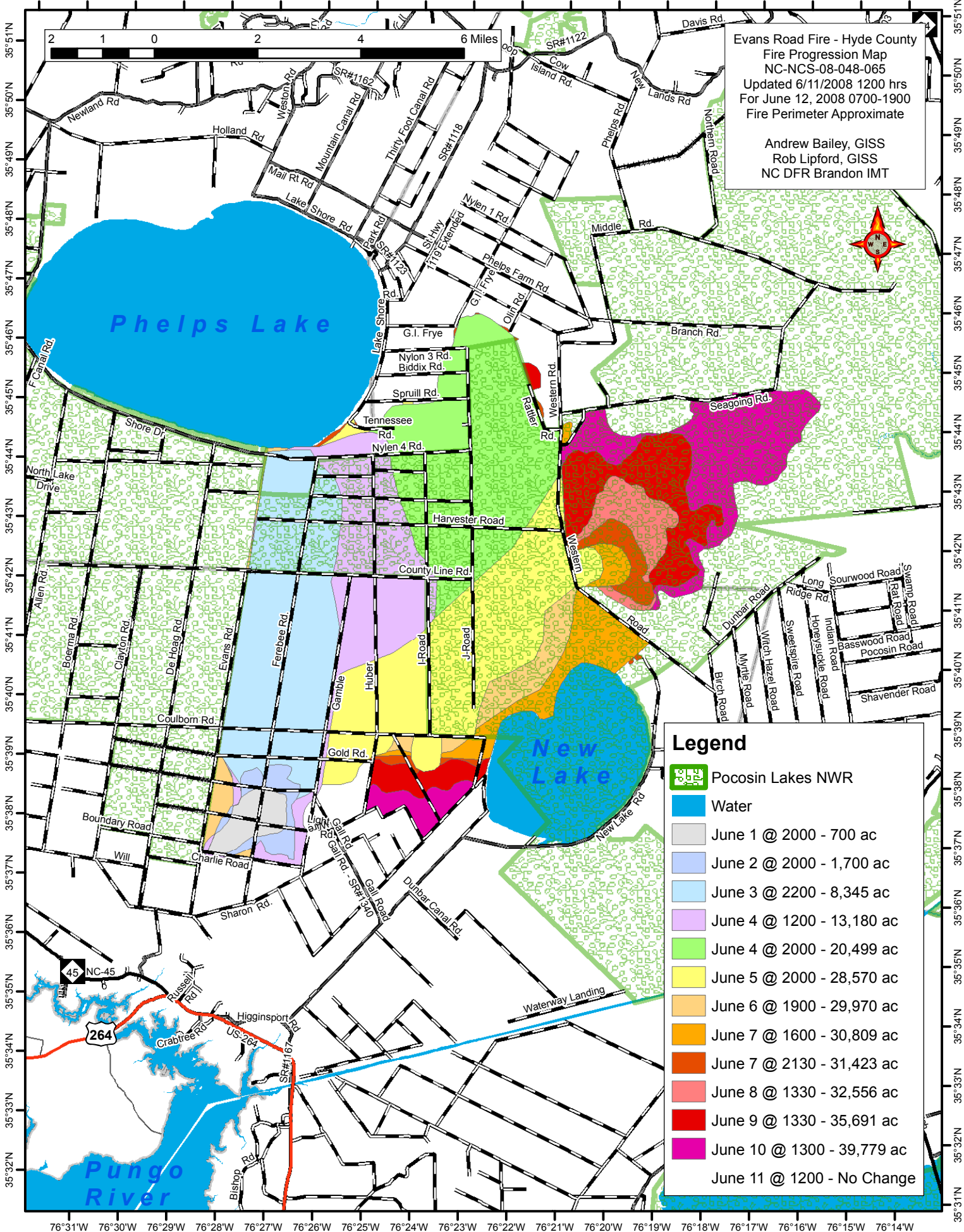


76°31'W 76°30'W 76°29'W 76°28'W 76°27'W 76°26'W 76°25'W 76°24'W 76°23'W 76°22'W 76°21'W 76°20'W 76°19'W 76°18'W 76°17'W 76°16'W 76°15'W 76°14'W 76°13'W



Evans Road Fire - Hyde County
Fire Progression Map
NC-NCS-08-048-065
Updated 6/11/2008 1200 hrs
For June 12, 2008 0700-1900
Fire Perimeter Approximate

Andrew Bailey, GISS
Rob Lipford, GISS
NC DFR Brandon IMT

Legend

- Pocosin Lakes NWR
- Water
- June 1 @ 2000 - 700 ac
- June 2 @ 2000 - 1,700 ac
- June 3 @ 2200 - 8,345 ac
- June 4 @ 1200 - 13,180 ac
- June 4 @ 2000 - 20,499 ac
- June 5 @ 2000 - 28,570 ac
- June 6 @ 1900 - 29,970 ac
- June 7 @ 1600 - 30,809 ac
- June 7 @ 2130 - 31,423 ac
- June 8 @ 1330 - 32,556 ac
- June 9 @ 1330 - 35,691 ac
- June 10 @ 1300 - 39,779 ac
- June 11 @ 1200 - No Change

76°31'W 76°30'W 76°29'W 76°28'W 76°27'W 76°26'W 76°25'W 76°24'W 76°23'W 76°22'W 76°21'W 76°20'W 76°19'W 76°18'W 76°17'W 76°16'W 76°15'W 76°14'W