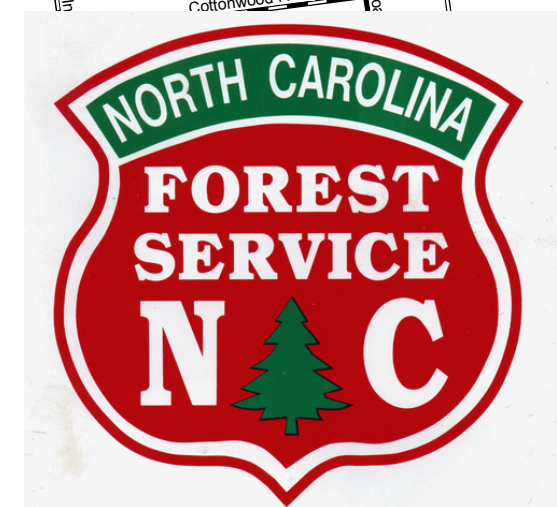
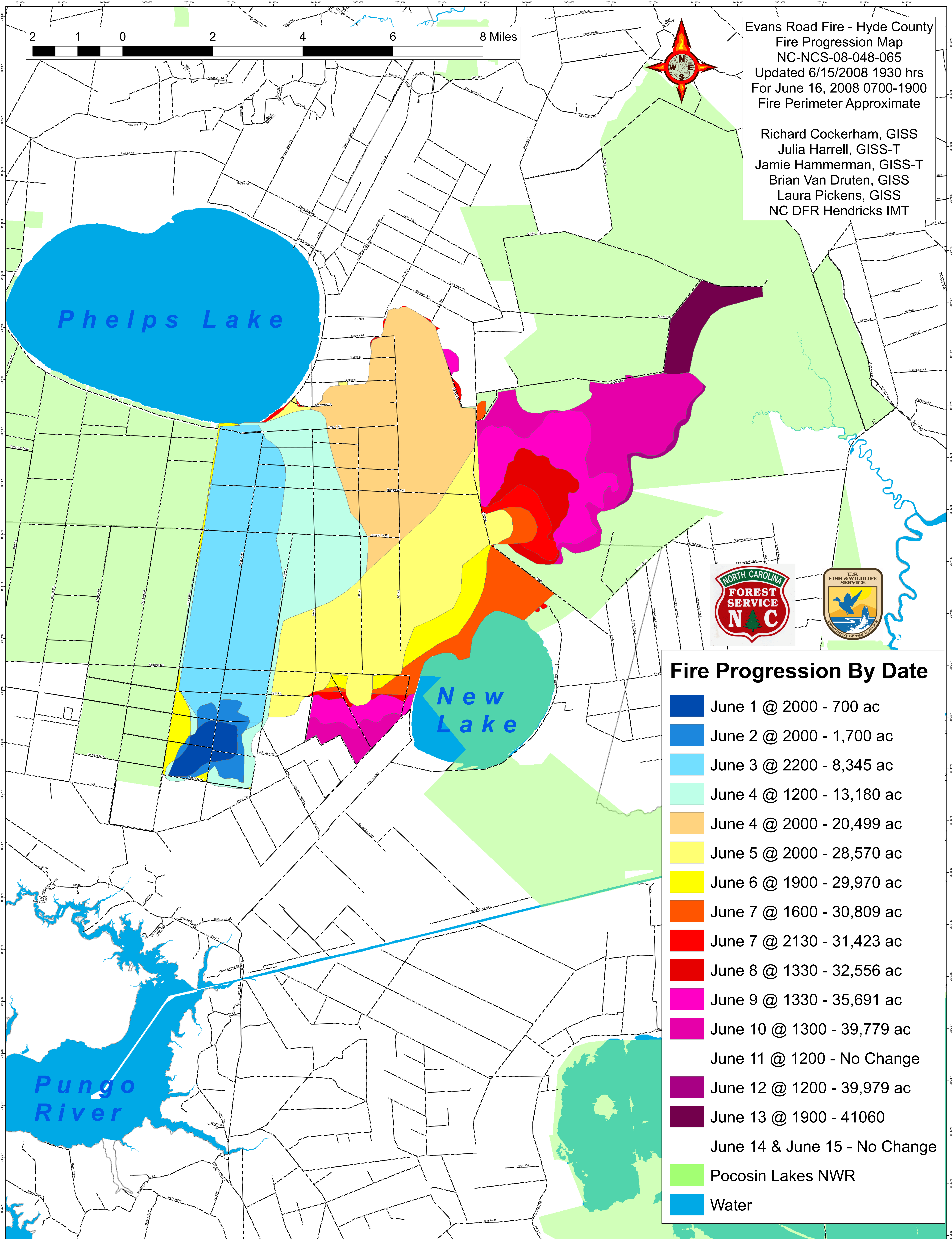


Evans Road Fire - Hyde County  
 Fire Progression Map  
 NC-NCS-08-048-065  
 Updated 6/15/2008 1930 hrs  
 For June 16, 2008 0700-1900  
 Fire Perimeter Approximate

Richard Cockerham, GISS  
 Julia Harrell, GISS-T  
 Jamie Hammerman, GISS-T  
 Brian Van Drueten, GISS  
 Laura Pickens, GISS  
 NC DFR Hendricks IMT



### Fire Progression By Date

- June 1 @ 2000 - 700 ac
- June 2 @ 2000 - 1,700 ac
- June 3 @ 2200 - 8,345 ac
- June 4 @ 1200 - 13,180 ac
- June 4 @ 2000 - 20,499 ac
- June 5 @ 2000 - 28,570 ac
- June 6 @ 1900 - 29,970 ac
- June 7 @ 1600 - 30,809 ac
- June 7 @ 2130 - 31,423 ac
- June 8 @ 1330 - 32,556 ac
- June 9 @ 1330 - 35,691 ac
- June 10 @ 1300 - 39,779 ac
- June 11 @ 1200 - No Change
- June 12 @ 1200 - 39,979 ac
- June 13 @ 1900 - 41060
- June 14 & June 15 - No Change
- Pocosin Lakes NWR
- Water