

76°30'W 76°29'W 76°28'W 76°27'W 76°26'W 76°25'W 76°24'W 76°23'W 76°22'W 76°21'W 76°20'W 76°19'W 76°18'W 76°17'W

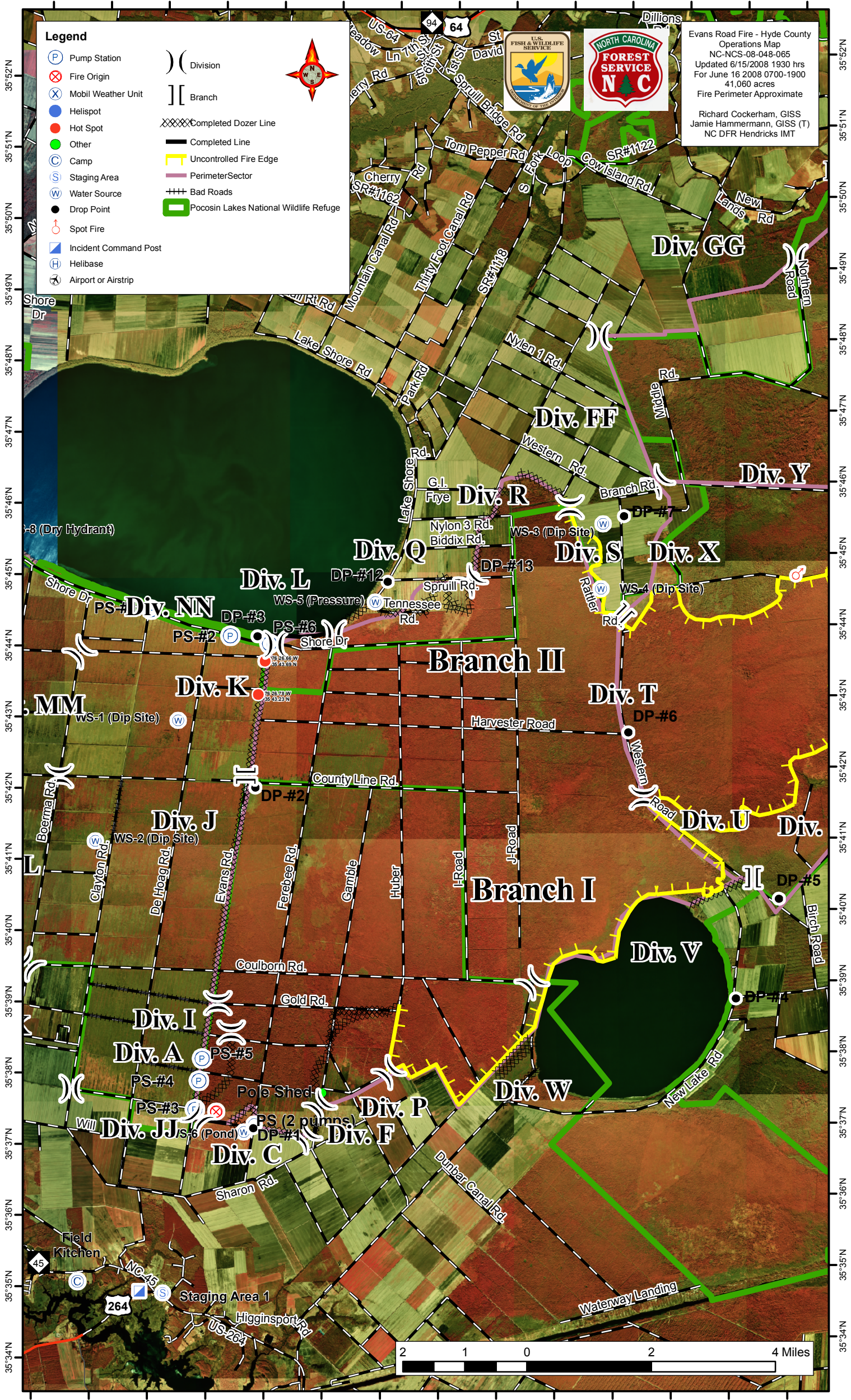
**Legend**

- Pump Station
- Fire Origin
- Mobil Weather Unit
- Helispot
- Hot Spot
- Other
- Camp
- Staging Area
- Water Source
- Drop Point
- Spot Fire
- Incident Command Post
- Helibase
- Airport or Airstrip
- Division
- Branch
- Completed Dozer Line
- Completed Line
- Uncontrolled Fire Edge
- Perimeter Sector
- Bad Roads
- Pocosin Lakes National Wildlife Refuge



Evans Road Fire - Hyde County  
 Operations Map  
 NC-NCS-08-048-065  
 Updated 6/15/2008 1930 hrs  
 For June 16 2008 0700-1900  
 41,060 acres  
 Fire Perimeter Approximate

Richard Cockerham, GISS  
 Jamie Hammermann, GISS (T)  
 NC DFR Hendricks IMT



76°31'W 76°30'W 76°29'W 76°28'W 76°27'W 76°26'W 76°25'W 76°24'W 76°23'W 76°22'W 76°21'W 76°20'W 76°19'W 76°18'W