

76°30'W 76°29'W 76°28'W 76°27'W 76°26'W 76°25'W 76°24'W 76°23'W 76°22'W 76°21'W 76°20'W 76°19'W 76°18'W 76°17'W

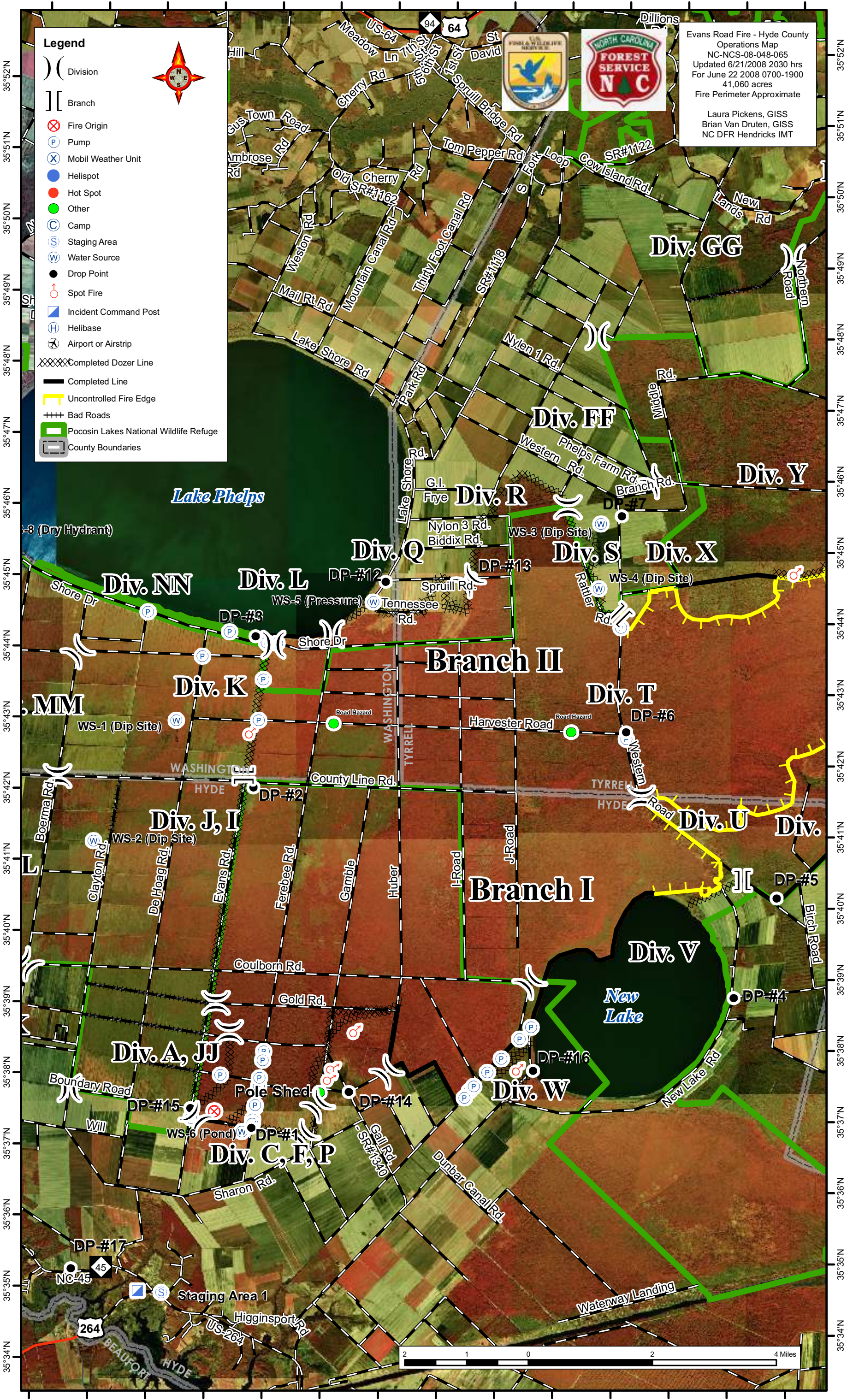
**Legend**

- ( ) Division
- [ ] Branch
- ⊗ Fire Origin
- P Pump
- X Mobil Weather Unit
- Helispot
- Hot Spot
- Other
- C Camp
- S Staging Area
- W Water Source
- Drop Point
- Spot Fire
- ▣ Incident Command Post
- H Helibase
- ✈ Airport or Airstrip
- XXXXX Completed Dozer Line
- Completed Line
- Uncontrolled Fire Edge
- +++ Bad Roads
- ▭ Pocosin Lakes National Wildlife Refuge
- ▭ County Boundaries



Evans Road Fire - Hyde County  
 Operations Map  
 NC-NCS-08-048-065  
 Updated 6/21/2008 2030 hrs  
 For June 22 2008 0700-1900  
 41,060 acres  
 Fire Perimeter Approximate

Laura Pickens, GISS  
 Brian Van Druen, GISS  
 NC DFR Hendricks IMT



35°52'N  
35°51'N  
35°50'N  
35°49'N  
35°48'N  
35°47'N  
35°46'N  
35°45'N  
35°44'N  
35°43'N  
35°42'N  
35°41'N  
35°40'N  
35°39'N  
35°38'N  
35°37'N  
35°36'N  
35°35'N  
35°34'N

76°31'W 76°30'W 76°29'W 76°28'W 76°27'W 76°26'W 76°25'W 76°24'W 76°23'W 76°22'W 76°21'W 76°20'W 76°19'W 76°18'W

Evans Road Fire - Hyde County  
 Operations Map  
 NC-NCS-08-048-065  
 Updated 6/21/2008 2100 hrs  
 For June 22, 2008 0700-1900  
 41,060 acres  
 Fire Perimeter Approximate

Brian Van Druen GISS  
 Laura Pickens GISS  
 NC DFR Hendricks IMT

**Legend**

- Division ( )
- Branch [ ]
- Fire Origin (X)
- Pump (P)
- Mobil Weather Unit (X)
- Helispot (blue circle)
- Hot Spot (red circle)
- Other (green circle)
- Camp (C)
- Staging Area (S)
- Water Source (W)
- Drop Point (black dot)
- Spot Fire (red circle with dot)
- Incident Command Post (blue square)
- Helibase (H)
- Airport or Airstrip (airplane icon)
- Uncontrolled Fire Edge (yellow line)
- Completed Dozer Line (XXXX)
- Completed Line (black line)
- Bad Roads (dashed line)
- Roads (solid line)
- Pocosin Lakes National Wildlife Refuge (green square)
- County Boundaries (grey outline)

