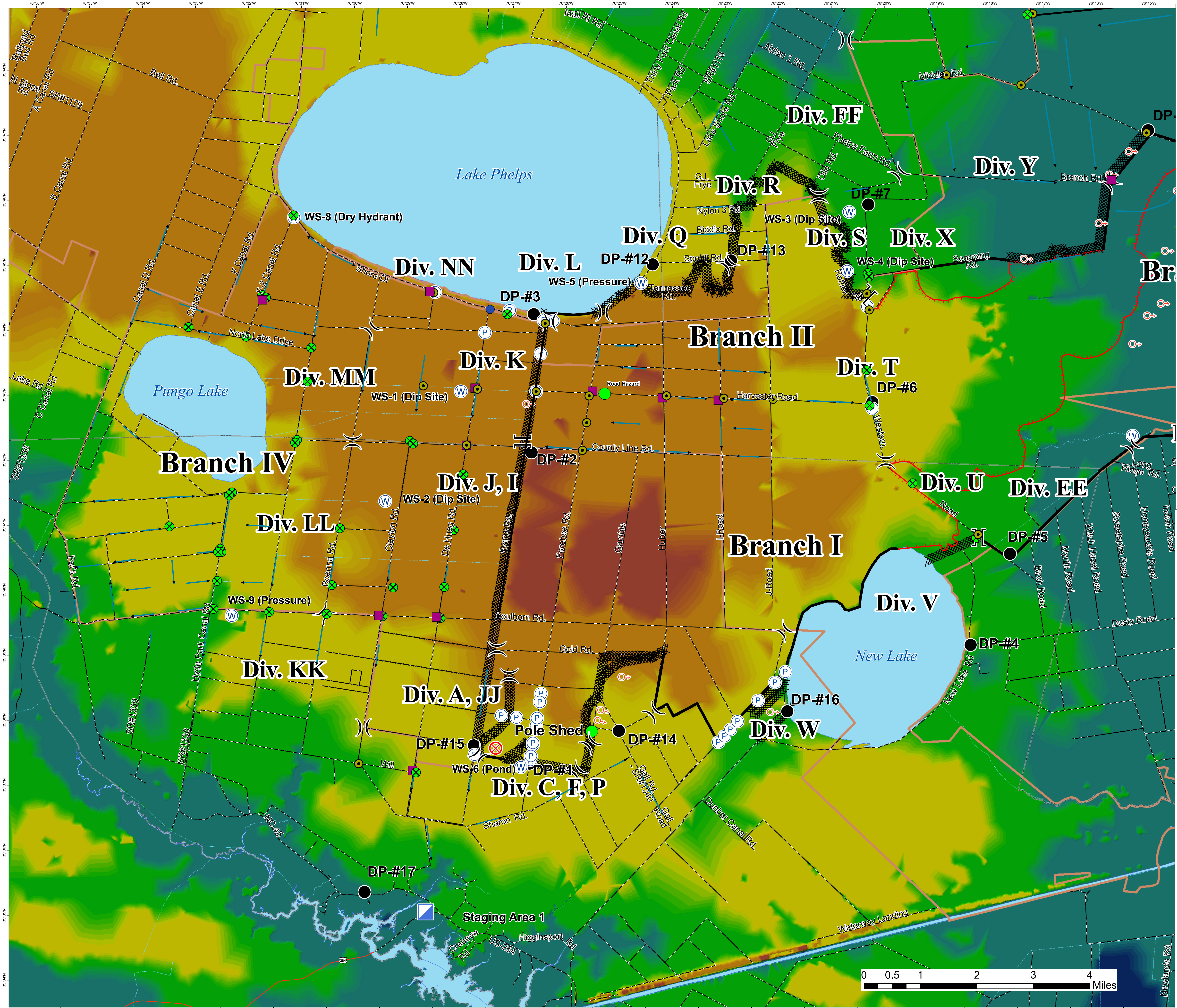
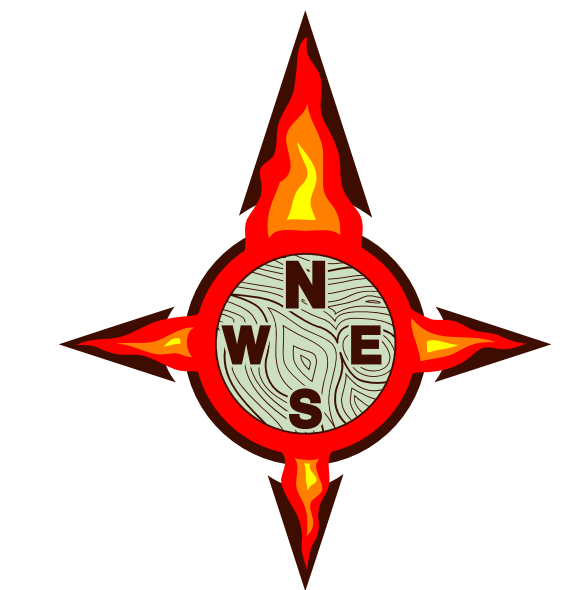


Evans Road Fire - Hyde County
 Elevation Grid
 NC-NCS-08-048-065
 For June 21, 2008
 41,060 acres
 Fire Perimeter Approximate

Brian Van Druten GISS
 Laura Pickens GISS
 NC DFR Hendricks IMT



Legend

- Water Control Device**
- Culvert
 - Plug
 - Proposed Plug
 - Proposed Pump
 - WCS
 - Proposed Berm
 - Direction of Canal Flow
 - Division
 - Branch
 - Fire Origin
 - Pump
 - Other
 - Water Source (Type)
 - Drop Point
 - Spot Fire
 - Incident Command Post
 - Completed Dozer Line
 - Completed Line
 - Uncontrolled Fire Edge
 - Bad Roads
 - County Boundaries
 - Pocosin Lakes National Wildlife Refuge

Elevation

8 - 8.625	7.375 - 8
17.375 - 18	6.75 - 7.375
16.75 - 17.375	6.125 - 6.75
16.125 - 16.75	5.5 - 6.125
15.5 - 16.125	4.875 - 5.5
14.875 - 15.5	4.25 - 4.875
14.25 - 14.875	3.625 - 4.25
13.625 - 14.25	3 - 3.625
13 - 13.625	2.375 - 3
12.375 - 13	1.75 - 2.375
11.75 - 12.375	1.125 - 1.75
11.125 - 11.75	0.5 - 1.125
10.5 - 11.125	-0.125 - 0.5
9.875 - 10.5	-0.75 - -0.125
9.25 - 9.875	-1.375 - -0.75
8.625 - 9.25	-2 - -1.375

