

76°30'W 76°29'W 76°28'W 76°27'W 76°26'W 76°25'W 76°24'W 76°23'W 76°22'W 76°21'W 76°20'W 76°19'W 76°18'W 76°17'W

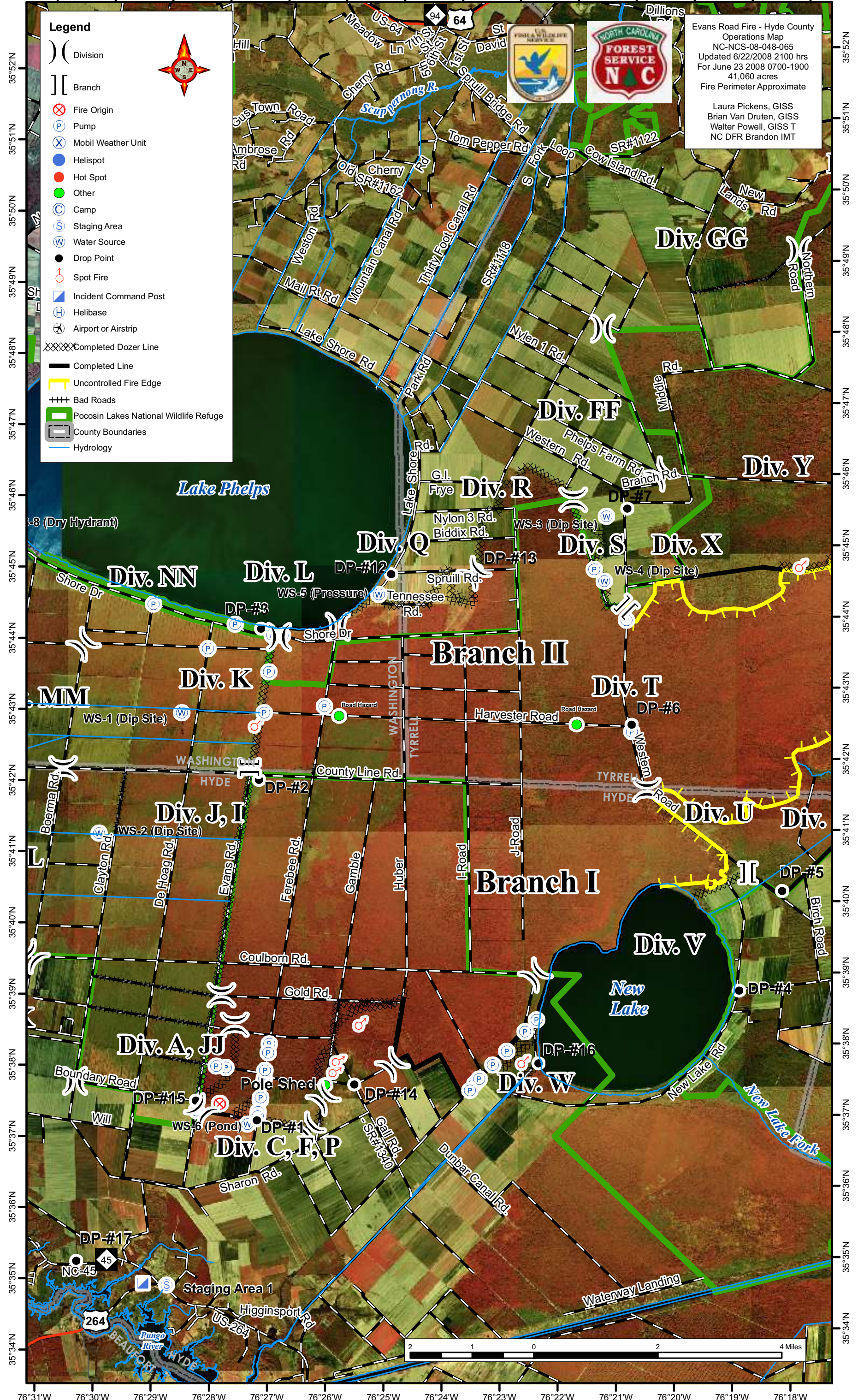
**Legend**

- ( ) Division
- [ ] Branch
- ⊗ Fire Origin
- ⊙ Pump
- ⊗ Mobil Weather Unit
- ⊙ Helispot
- Hot Spot
- Other
- ⊙ Camp
- ⊙ Staging Area
- ⊙ Water Source
- Drop Point
- ⊙ Spot Fire
- ▣ Incident Command Post
- ⊙ Helibase
- ⊙ Airport or Airstrip
- XXXXX Completed Dozer Line
- Completed Line
- Uncontrolled Fire Edge
- +++ Bad Roads
- ▭ Pocosin Lakes National Wildlife Refuge
- ▭ County Boundaries
- Hydrology



Evans Road Fire - Hyde County  
 Operations Map  
 NC-NCS-08-048-065  
 Updated 6/22/2008 2100 hrs  
 For June 23 2008 0700-1900  
 41,060 acres  
 Fire Perimeter Approximate

Laura Pickens, GISS  
 Brian Van Druen, GISS  
 Walter Powell, GISS T  
 NC DFR Brandon IMT



76°31'W 76°30'W 76°29'W 76°28'W 76°27'W 76°26'W 76°25'W 76°24'W 76°23'W 76°22'W 76°21'W 76°20'W 76°19'W 76°18'W



Evans Road Fire - Hyde County  
 Operations Map  
 NC-NCS-08-048-065  
 Updated 6/22/2008 2100 hrs  
 For June 23, 2008 0700-1900  
 41,060 acres  
 Fire Perimeter Approximate

Brian Van Druen GISS  
 Laura Pickens GISS  
 Walter Powell GIS-T  
 NC DFR Brandon IMT

**Legend**

- Hydrology
- Division
- Branch
- Fire Origin
- Pump
- Mobil Weather Unit
- Helispot
- Hot Spot
- Other
- Camp
- Staging Area
- Water Source
- Drop Point
- Spot Fire
- Incident Command Post
- Helibase
- Airport or Airstrip
- Uncontrolled Fire Edge
- Completed Dozer Line
- Completed Line
- Bad Roads
- Roads
- Pocosin Lakes National Wildlife Refuge
- County Boundaries

