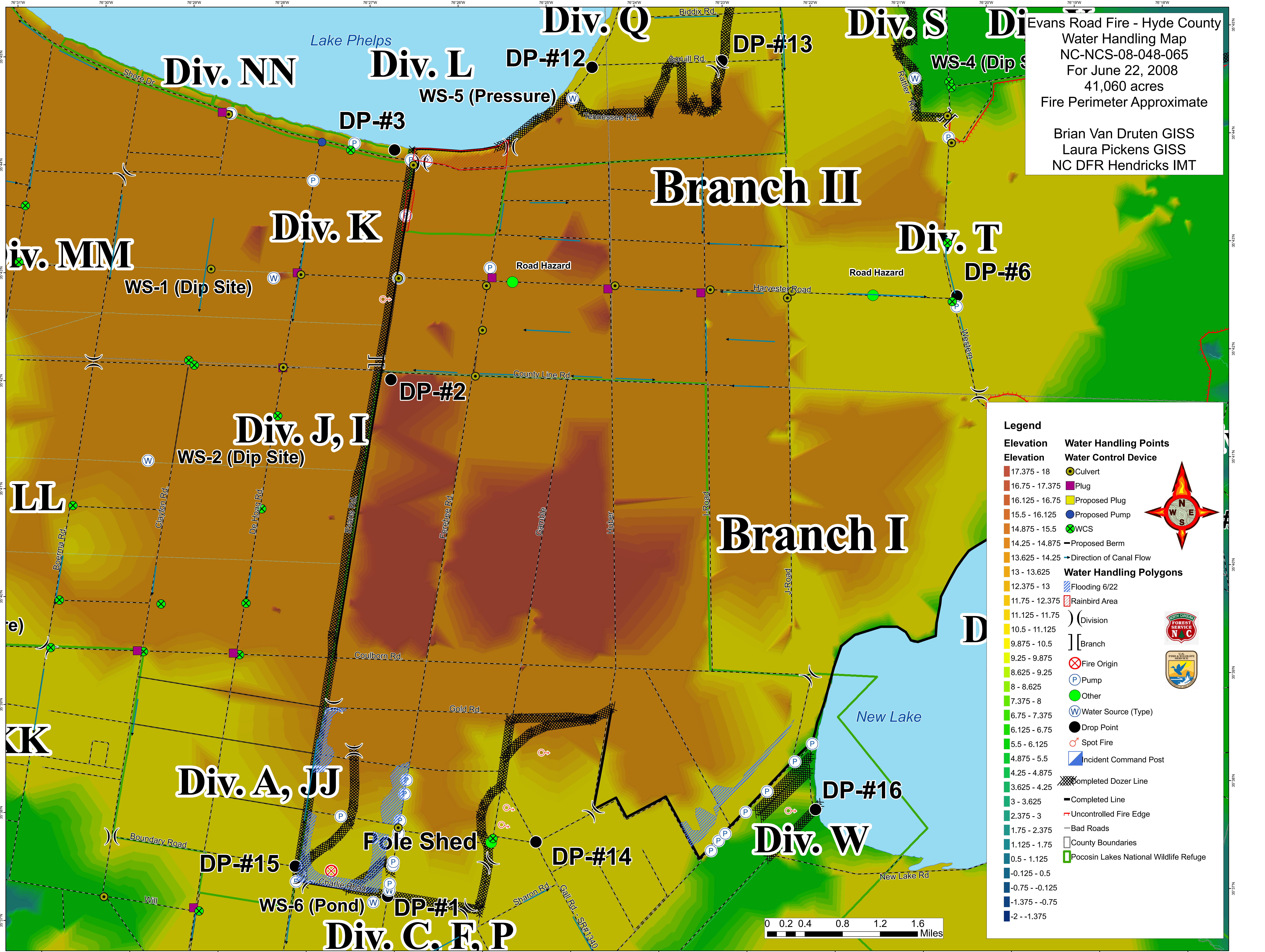


Evans Road Fire - Hyde County
 Water Handling Map
 NC-NCS-08-048-065
 For June 22, 2008
 41,060 acres
 Fire Perimeter Approximate

Brian Van Druten GISS
 Laura Pickens GISS
 NC DFR Hendricks IMT



Legend

Elevation	Water Handling Points
17.375 - 18	● Culvert
16.75 - 17.375	■ Plug
16.125 - 16.75	■ Proposed Plug
15.5 - 16.125	● Proposed Pump
14.875 - 15.5	● WCS
14.25 - 14.875	— Proposed Berm
13.625 - 14.25	→ Direction of Canal Flow
13 - 13.625	Water Handling Polygons
12.375 - 13	▨ Flooding 6/22
11.75 - 12.375	▨ Rainbird Area
11.125 - 11.75) (Division
10.5 - 11.125] [Branch
9.875 - 10.5	⊗ Fire Origin
9.25 - 9.875	⊙ Pump
8.625 - 9.25	● Other
8 - 8.625	⊙ Water Source (Type)
7.375 - 8	● Drop Point
6.75 - 7.375	⊙ Spot Fire
6.125 - 6.75	▢ Incident Command Post
5.5 - 6.125	▨ Completed Dozer Line
4.875 - 5.5	— Completed Line
4.25 - 4.875	— Uncontrolled Fire Edge
3.625 - 4.25	--- Bad Roads
3 - 3.625	▭ County Boundaries
2.375 - 3	▨ Pocosin Lakes National Wildlife Refuge
1.75 - 2.375	
1.125 - 1.75	
0.5 - 1.125	
-0.125 - 0.5	
-0.75 - -0.125	
-1.375 - -0.75	
-2 - -1.375	

Scale: 0 0.2 0.4 0.8 1.2 1.6 Miles